



# Weight Kit

## Commercial Walk-Behind/Stand-On Mowers

Model No. 117-3620

### Installation Instructions

**Note:** Determine the left and right sides of the machine from the normal operating position.

Weights are installed to improve handling, balance and improve performance. Weights can be added or removed to create optimized performance under different mowing conditions and for operator preference (Figure 1).

It is recommended that weights be added, relocated or removed one at a time until the desired handling and balance is achieved.

### **⚠ WARNING**

Excessive weight changes can effect handling and operation of the machine. This could cause serious injury to you or bystanders.

Make sure weight changes is small increments only.

Evaluate the muffler after each weight change to ensure the machine can be operated safely.

### Loose Parts

Use the chart below to verify that all parts have been shipped.

Description	Qty.	Use
Weight	1	Install the weight.
Carriage bolt (3/8 x 4 inches)	2	
Carriage bolt (3/8 x 5 inches)	2	
Carriage bolt (3/8 x 6 inches)	2	
Flange nut (3/8 inch)	2	

# Installing the Weight

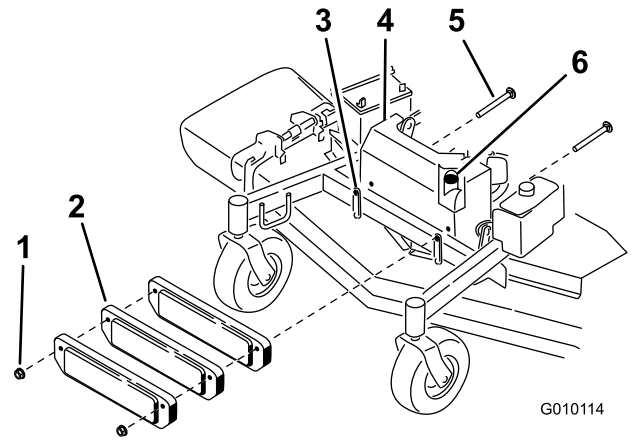
1. Disengage the PTO, stop the engine, remove the key, and wait for all moving parts to stop before leaving the operating position.
2. Allow the engine and muffler to cool before installing this kit.
3. Determine the size of bolt needed to install the weights.  
Use the following table to determine the length of the bolt needed for the number of weights you will be installing.

Size of bolt to use:	Number weights to install
3/8 x 4 inches	1
3/8 x 5 inches	2
3/8 x 6 inches	3

## **⚠ WARNING**

Contact with hot surfaces may cause personal injury.

- Allow the muffler and engine to cool before installing this kit.
  - Keep hands, feet, face, clothing and other body parts away from a hot muffler and engine.
4. Raise the height-of-cut lever to the appropriate position to allow the best clearances for the removal and installation of fasteners.
  5. Remove the 4 muffler guard bolts. Adjust the guard position as needed to remove the bolts (Figure 1).
  6. Install the new bolts through the muffler guard and through the clamp bar.
  7. Install the weight onto the bolts with the clamp bar in place behind the weight (Figure 1).
  8. Loosely install the nuts and slide the muffler guard left or right to center the exhaust outlet tube in the center of the muffler guard opening.
  9. Tighten the four nuts and ensure the muffler exhaust tube is centered in the muffler guard opening (Figure 1).
  10. Operate the height-of-cut lever through full range to verify clearance of the parts around the muffler and guard.



**Figure 1**

- |               |  |
|---------------|--|
| 1. Flange nut | 4. Muffler guard   |
| 2. Weight     | 5. Bolt  |
| 3. Clamp bar  | 6. Center the exhaust outlet tube in the center of the muffler guard opening |