



Deck Stop Replacement Kit

Groundsmaster® 5900/5910 Traction Unit

Model No. 119-7700

Form No. 3364-775 Rev A

Installation Instructions

Installation

Loose Parts

Use the chart below to verify that all parts have been shipped.

Description	Qty.	Use
No parts required	—	Remove the side cutting units
Stop assembly	1	Install the stop assemblies
Bolt, 3/8 x 1-1/2 inch (Grade 8)	4	
Washer	4	
Stop pad	1	Install the stop pads
Stop shim	2	
Rivet	4	
No parts required	—	Install the side cutting units

Removing the Side Cutting Units

1. Position the machine on a level surface, lower cutting unit, stop the engine, engage the parking brake and remove the key from the ignition.
2. Remove cutting unit outer cover to access hydraulic deck motor.
3. Remove (3) hose guides from cutting unit (Figure 1). The (2) guides, around the hoses, can stay on the hydraulic hoses.

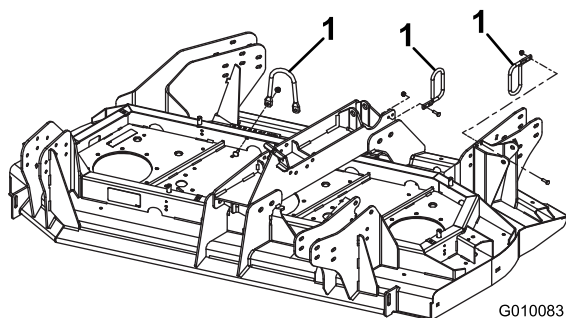


Figure 1

1. Hose guide

4. Remove the bolts securing the hydraulic motor to the cutting unit (Figure 2). Lift the motor off of the cutting unit and position it away from the cutting unit.

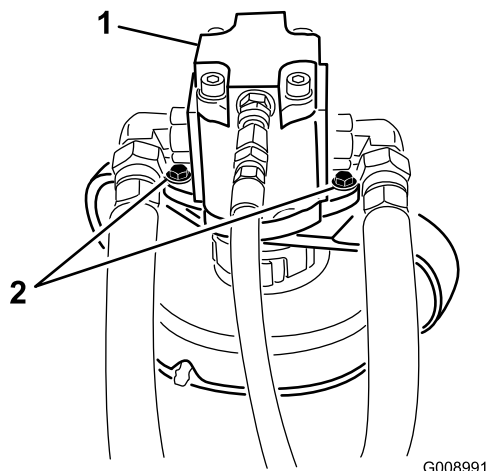


Figure 2

1. Hydraulic motor
2. Mounting bolts

- Remove (8) flange head screws and lock nuts that secure deck connection to cutting unit (Figure 3).

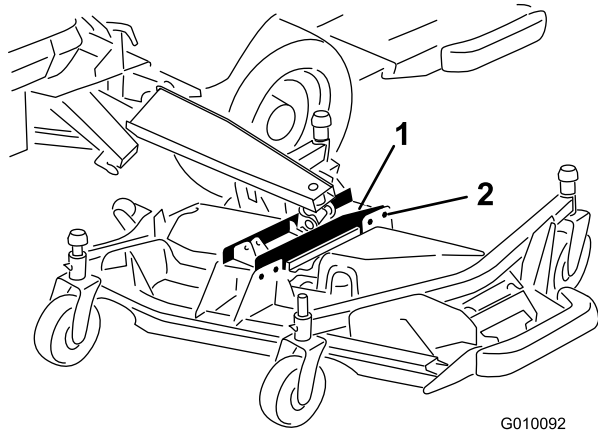


Figure 3

- Deck connection
- Mounting bolts (8)

- Raise lift arm enough to separate deck connection from cutting unit.
- Slide the cutting unit away from the traction unit.

Installing the Stop Assemblies

- Remove the (4) bolts and washers securing the base mount and deck stop, if so equipped, to the deck connection bracket (Figure 4). Discard deck stop.

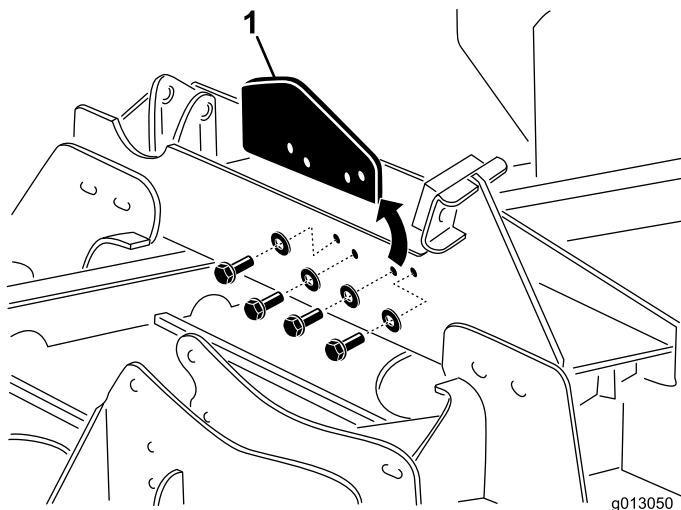


Figure 4

- Deck stop

- Install the new stop assembly to the deck connection bracket and the base mount with (4) 3/8 x 1-1/2 inch bolts and washers. Position the stop assembly as shown in Figure 5. Torque the bolts to 39-47 ft-lbs (53-64 N-m).

Note: When tightening the bolts, press down on the stop assembly to make sure the inside plate is

resting on the top of the deck connection bracket as shown in Figure 5, inset.

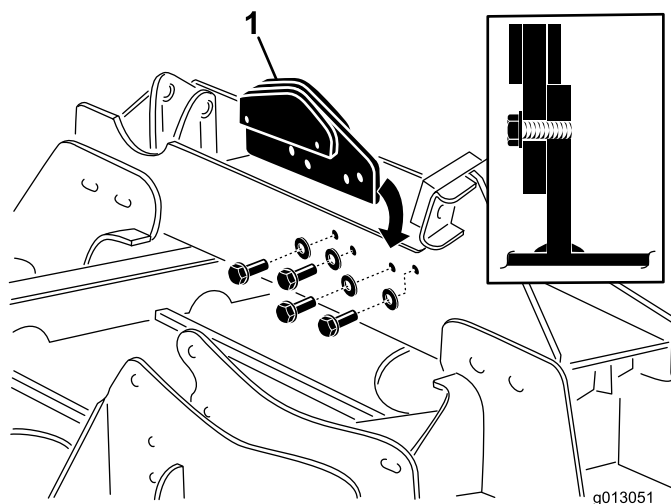


Figure 5

- Stop assembly

Installing the Stop Pads

- Using the dimensions shown in Figure 6, locate, mark and drill (4) .259 ± .002 inch diameter holes in the side deck lift arm.

Note: The stop pad may be used as a template to mark and/or check the marked hole locations before drilling.

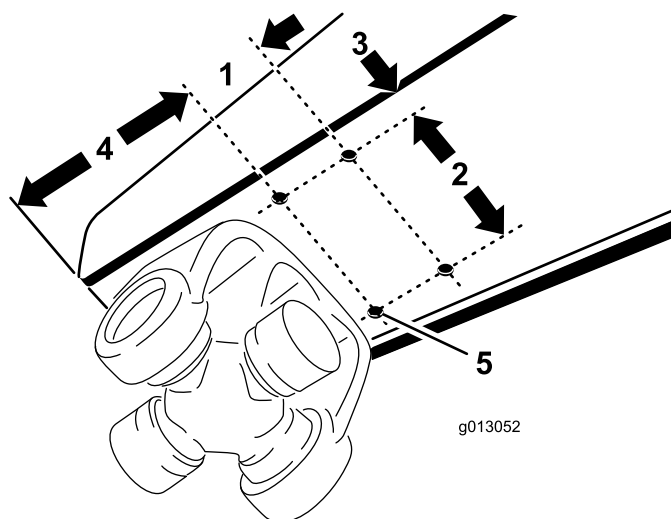


Figure 6

Left side deck arm shown

- 1.630 inches
- 3.00 inches
- .50 inch
- 3-13/16 inches
- .259 ± .002 inch diameter hole (4)

- Align the stop pad with the drilled holes in the lift arm (Figure 7).

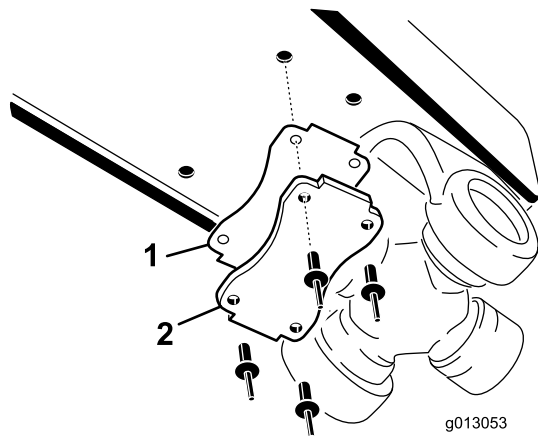


Figure 7

1. Shim 2. Stop pad

Important: The top of the deck stop must be flush with or slightly higher than the back edge of the lift arm (Figure 8). If the stop is below the edge, use 1 or 2 shims to attain the required height.

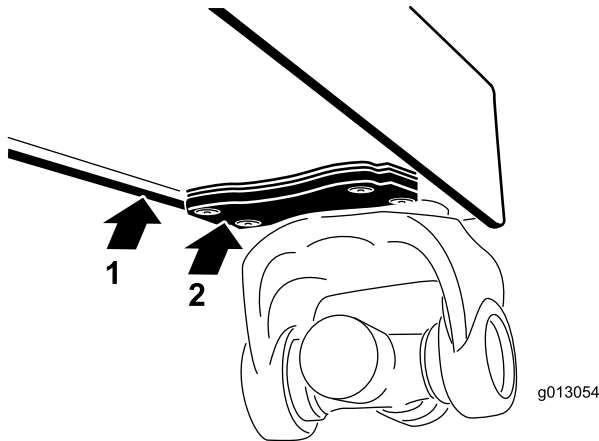


Figure 8

1. Back edge of lift arm 2. Deck stop

3. Secure the stop and shim(s), if required, to the lift arm with (4) rivets (Figure 7).

Installing the Side Cutting Units

1. Position the machine on a level surface, stop the engine, engage the parking brake and remove the key from the ignition.
2. Position the side cutting unit to the raised lift arm.
3. Insert the key into the ignition.
4. To lower the lift arm, either start the engine and lower with the switch shutting off the engine while holding the switch in the lower position or turn the

key to run and hold lower switch while pulling down on lift arm.

5. Lower the lift arm while aligning the deck connection to the cutting unit.
6. Turn the key switch off and remove the key from the ignition.
7. Install the deck connection to the cutting unit with (8) flange head screws and lock nuts previously removed (Figure 3). Torque the bolts to 67-83 ft-lb (91-112 N-m).
8. Install the hydraulic motor to the cutting unit with the bolts previously removed (Figure 2). Torque the bolts to 27-33 (37-45 N-m).
9. Position and secure the three (3) hose guides to the cutting unit (Figure 1).
10. Lubricate the grease fittings on the cutting unit and lift arm assemblies (see Operator's Manual).
11. Install all the removed cutting unit covers.



Count on it.