



**Count on it.**

**Parts Catalog**

**5 To 7 Conversion Kit**

**Reelmaster® Transport Frame**

**Model No. 33452—Serial No. 31000001 and Up**

# Ordering Replacement Parts

To order replacement parts, please supply the part number, the quantity, and the description of each part desired.

## Understanding Reference Numbers

Each identified part in an illustration has a reference number. The reference number for a part also appears in the parts list, along with other information about the part.

This catalog uses two special reference number formats, one to indicate parts in a service assembly and another to indicate the quantity of a given part in an illustration.

## Service Assembly Reference Numbers

Parts in service assemblies have reference numbers in the form a:b. The a represents the reference number of the entire service assembly and the b represents a sequential number unique to each part within the service assembly.

For example, a wheel assembly might be identified by reference number 6, the tire by 6:1, the valve by 6:2, and the wheel by 6:3. When you order the assembly identified by reference number 6, you receive all parts identified by reference numbers 6:1, 6:2, and 6:3. However, you may also order any part individually. Reference numbers of this type appear in illustration and in parts lists.

## Reference Numbers Indicating Quantity

In an illustration, if a reference number indicates more than one part, the reference number has the form nX y. The n represents the quantity of the part, the X is the multiplication symbol, and the y represents the reference number.

For example, in an illustration, the reference number 2X 37 means that two of the parts identified by reference number 37 are indicated.

# List of Abbreviations

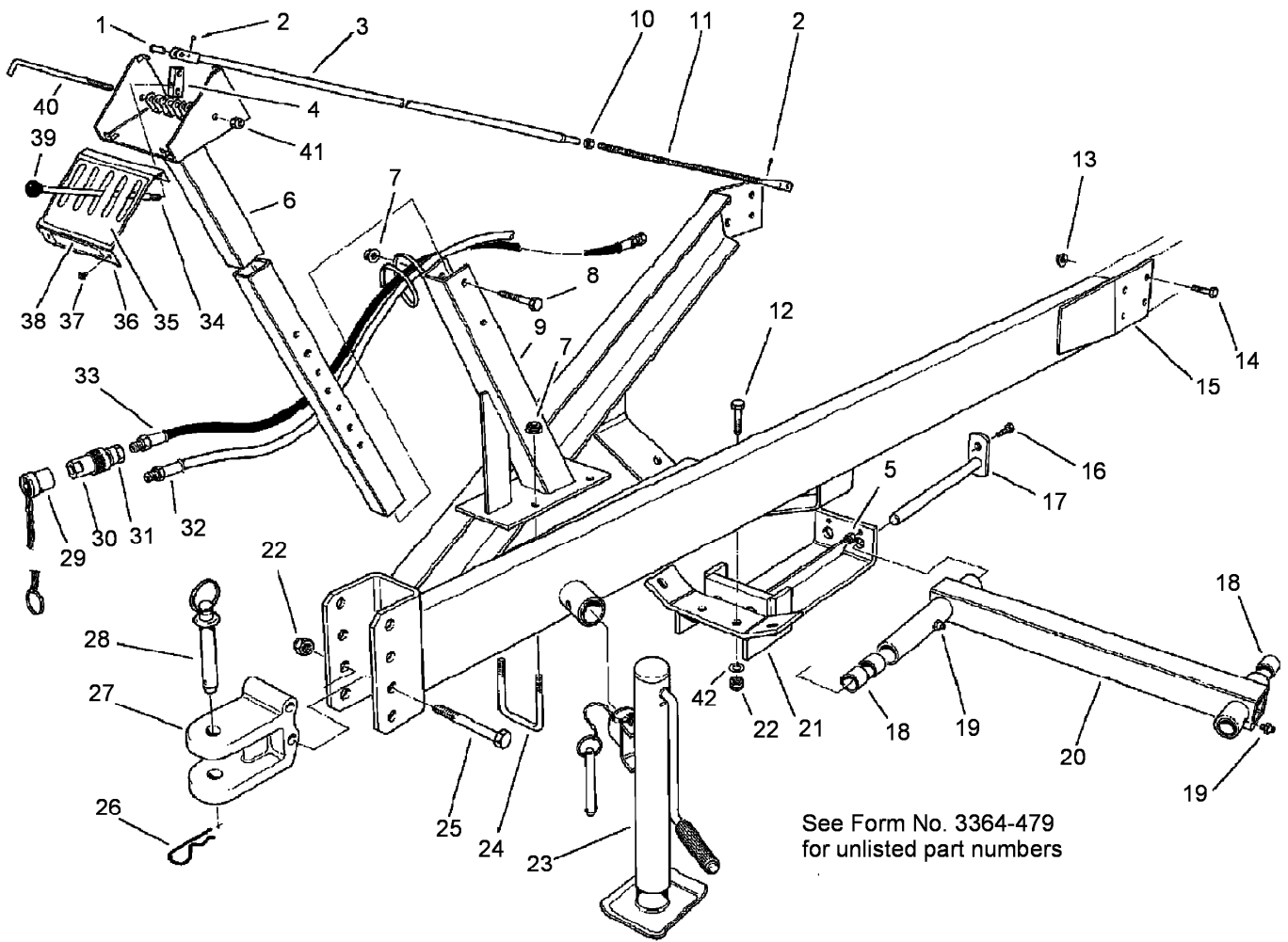
**AR:** as required  
**ASM:** assembly  
**BBC:** blade brake clutch  
**CARR:** carriage  
**CCW:** counter clock wise  
**CW:** clockwise  
**DEG:** degrees  
**ECM:** electronic control module  
**EXT:** external  
**FH:** flat head  
**GA:** gauge  
**HD:** heavy-duty  
**HF:** hex flange  
**HH:** hex head  
**HHF:** hex head flange  
**HHFTF:** hex head flange thread forming  
**HJ:** hex jam  
**HLH:** hex lag head  
**HOC:** height-of-cut

**HSBH:** hex socket button head  
**HSFH:** hex socket flat head  
**HSH:** hex socket head  
**HWH:** hex washer head  
**HWHTF:** hex washer head thread forming  
**HYD:** hydraulic  
**LH:** left hand  
**NI:** nylon insert  
**NPTF:** national pipe thread fine  
**PFH:** phillips flat head  
**PPH:** phillips pan head  
**PPHTF:** phillips pan head thread forming  
**PRH:** phillips round head  
**PTH:** phillips truss head  
**PTO:** power-take-off  
**RH:** right hand  
**ROPS:** roll-over protection system  
**RRB:** rear roller brush

**SFH:** slotted fillister head  
**SHH:** slotted hex head  
**SHWH:** slotted hex washer head  
**SPH:** slotted pan head  
**SQH:** square head  
**SRH:** slotted round head  
**STD:** standard  
**TAP:** self tapping  
**TTH:** torx truss head

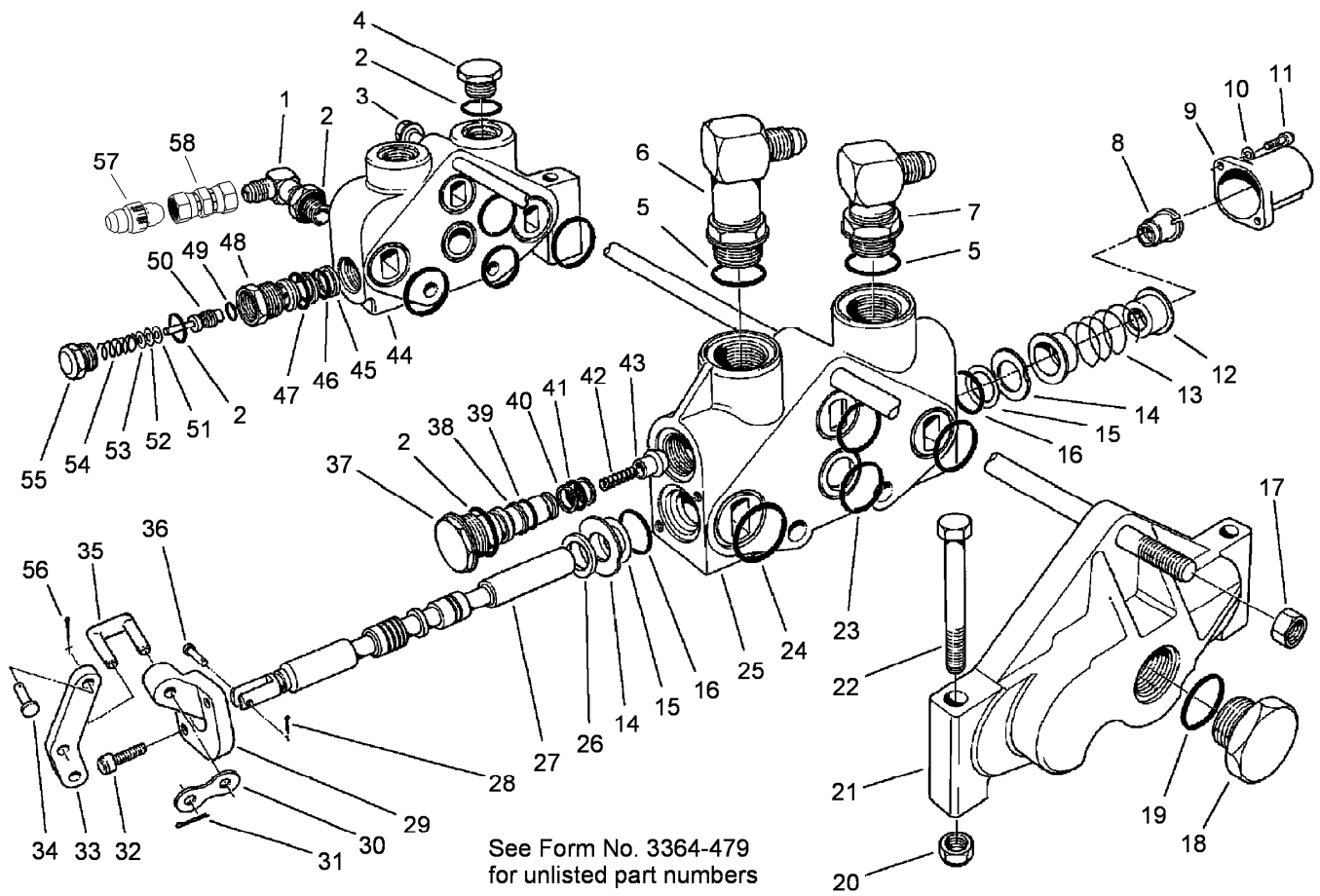
# Contents

Control Tower and Linkage Assembly .....	4
Hydraulic Valve Assembly No. 63-8510 .....	5
Front Cross Channel Assembly .....	6
Rear Cross Channel Assembly .....	7
Lift Arm Assembly No. 6 and 7 .....	8
Hydraulic Cylinder Assembly No. 115-4948-01 (12in) .....	9
Lift Bail Assembly .....	10
Hydraulic Schematic .....	11



## Control Tower and Linkage Assembly

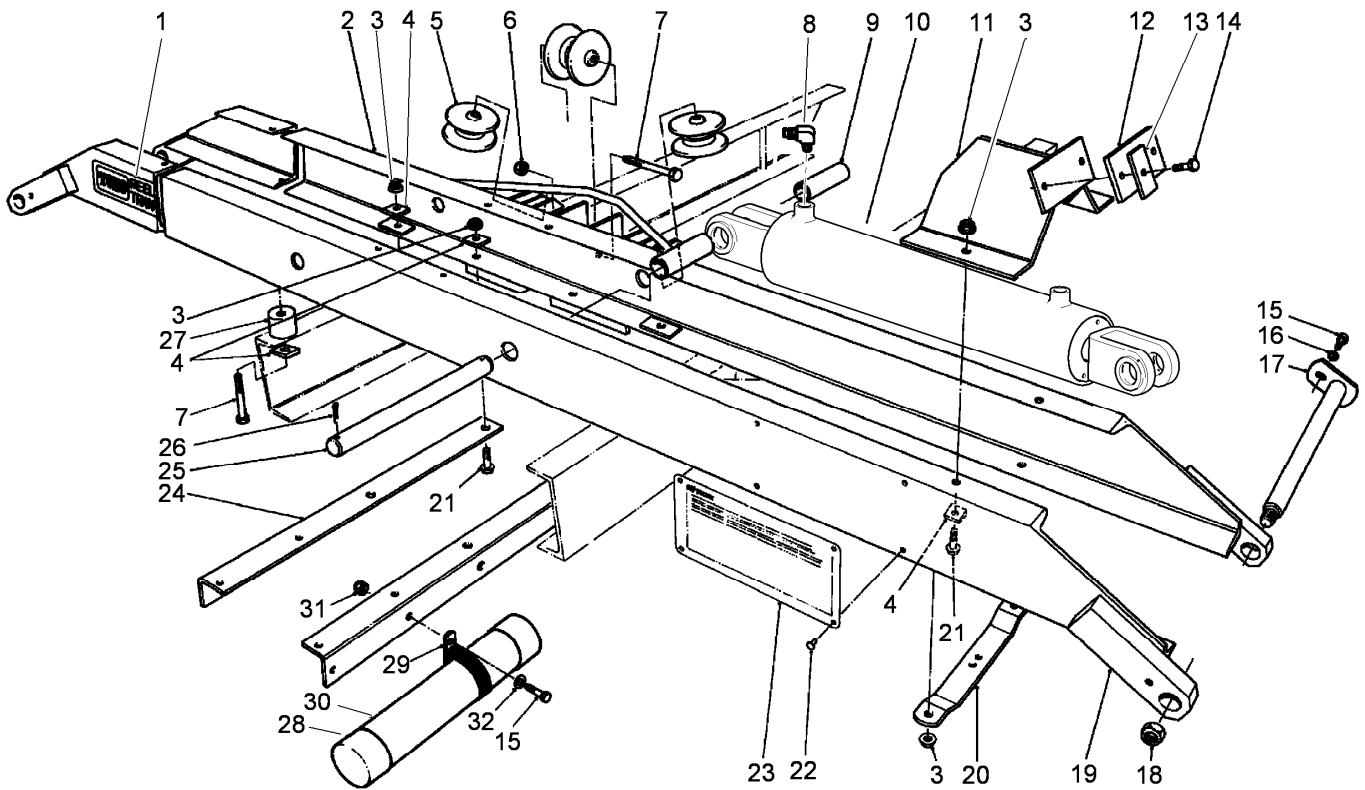
Ref.	Part Number	Qty.	Description
1	283-6	2	Pin-Clevis
2	3272-31	4	Pin-Cotter
3	47-3880-03	2	Control Linkage ASM
4	47-3620	2	Block-Pivot, Lever
10	3217-8	2	Nut-Hex
11	47-3630	2	Rod-Linkage, Control
34	47-3810	2	Lever-Valve
39	3-0631	2	Ball-Grip



## Hydraulic Valve Assembly No. 63-8510

Ref.	Part Number	Qty.	Description
5	237-79	4	O-Ring ●
7	353-537	4	Elbow-Male (Incl. Ref. #5) ●
30	63-8760	2	Kit-Pin, Link (Incl. Ref. #31, 35 & 36) ●
31	3272-1	4	Pin-Cotter ●
33	52-5670	2	Lever-Control (Incl. Ref. #34) ●
34	283-62	2	Pin-Clevis ●
35	63-8760	2	Link Pin Kit ●
36	353-322	2	Pin ●

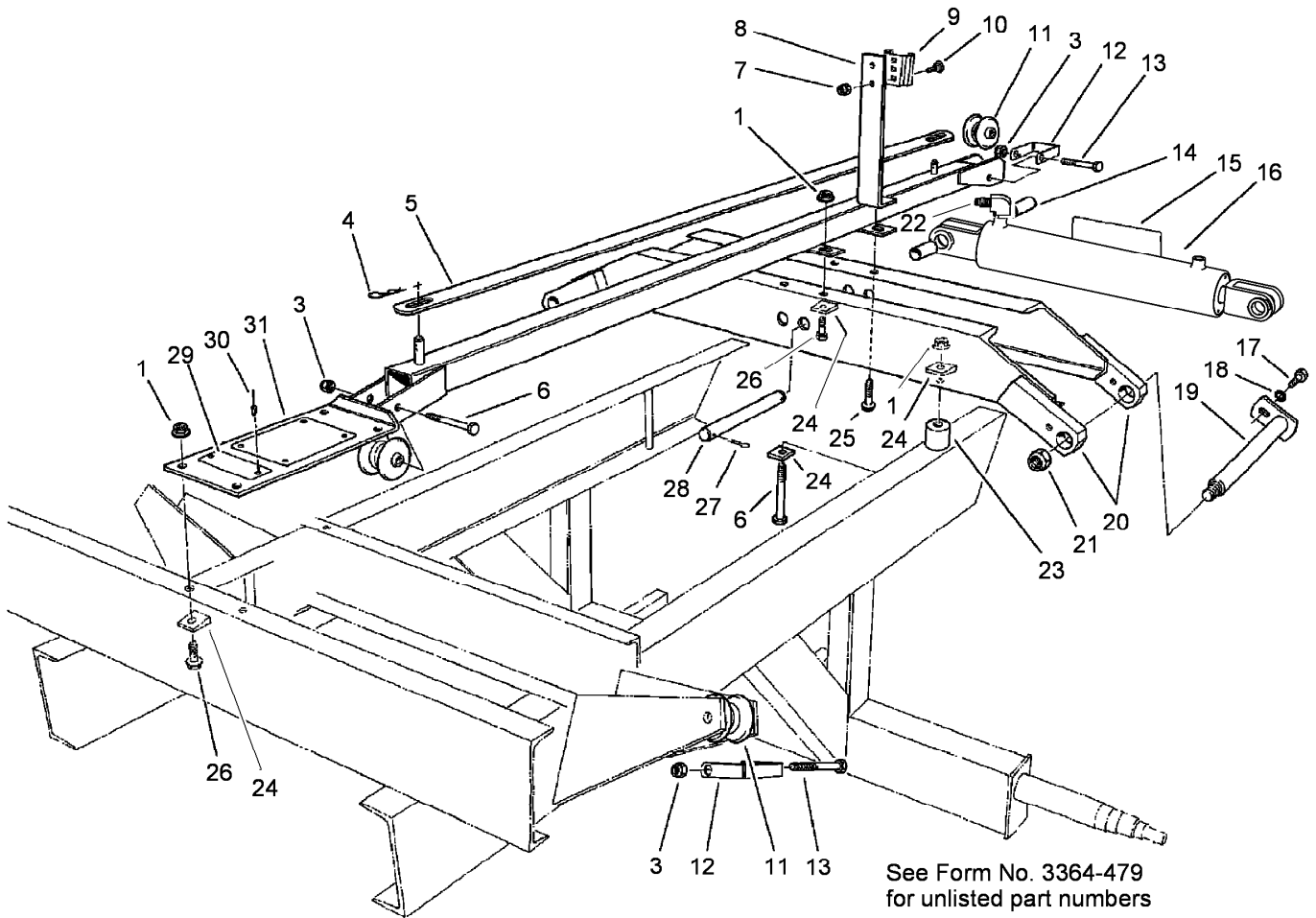
● Note: Quantities indicated are for one valve assembly.



See Form No. 3364-479  
for unlisted part numbers

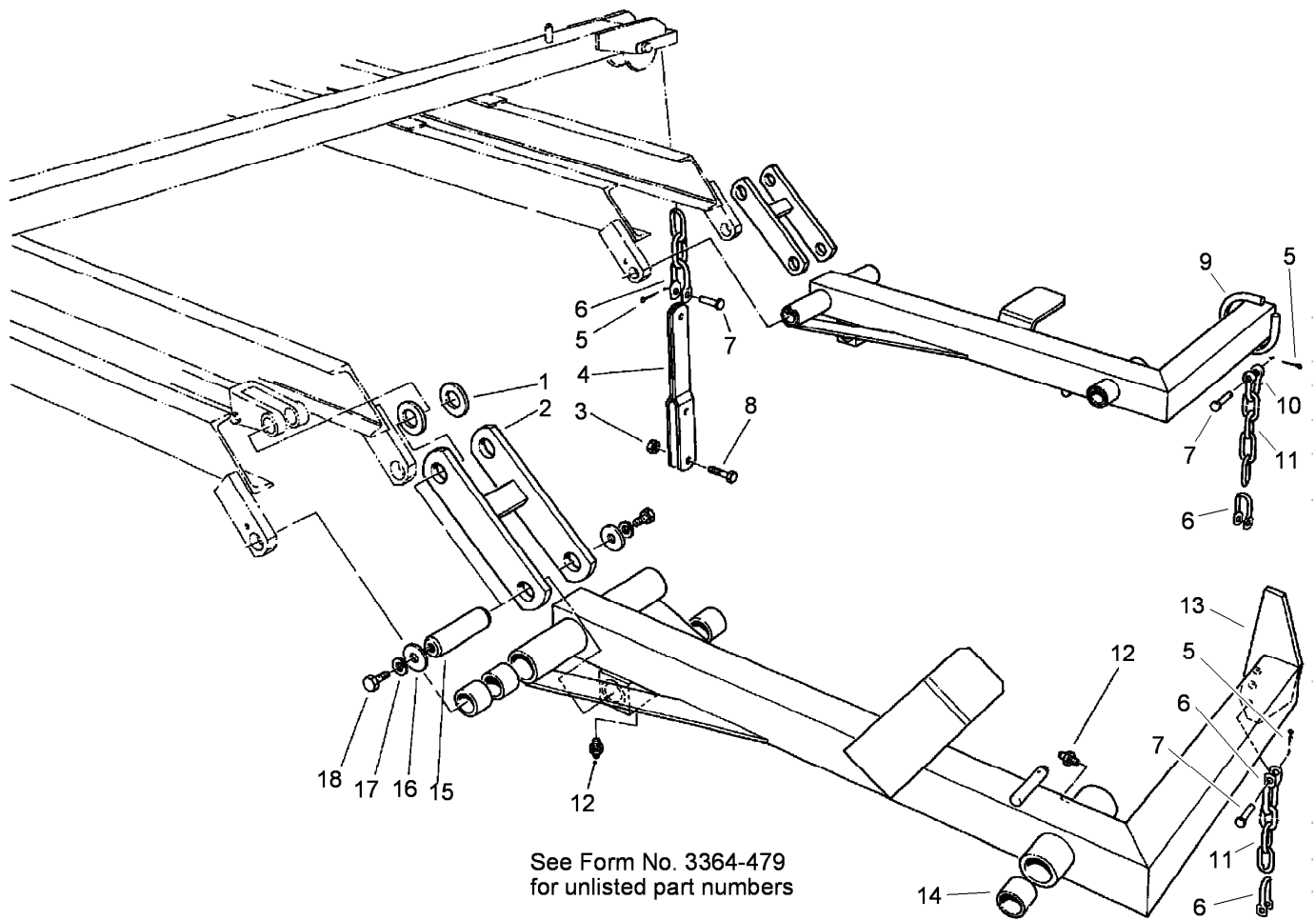
## Front Cross Channel Assembly

Ref.	Part Number	Qty.	Description	Ref.	Part Number	Qty.	Description
3	32128-23	8	Nut-HF	14	322-6	4	Screw-HH
4	3290-216	8	Washer	15	322-3	2	Screw-HH
8	47-3840	4	Elbow-.094 Orifice	16	3253-4	2	Washer-Lock
9	20-4390	4	Tube-Spacer	17	37-2760	2	Bail-Pin, Lift
10	115-4948-01	2	Hydraulic Cylinder ASM (12.19 Stroke)	18	3296-50	2	Nut-Lock, NI
11	11-5630	2	Stop	20	37-2910	2	Rest-Cylinder
12	11-4590	2	Pad-Bumper	21	325-6	8	Screw-HH
13	11-5270	4	Washer-Bumper	25	3-0144	2	Shaft
				26	3272-24	4	Pin-Cotter



## Rear Cross Channel Assembly

<i>Ref.</i>	<i>Part Number</i>	<i>Qty.</i>	<i>Description</i>
4	3290-355	2	Pin-Hair
5	47-3800	1	Strap-Locking

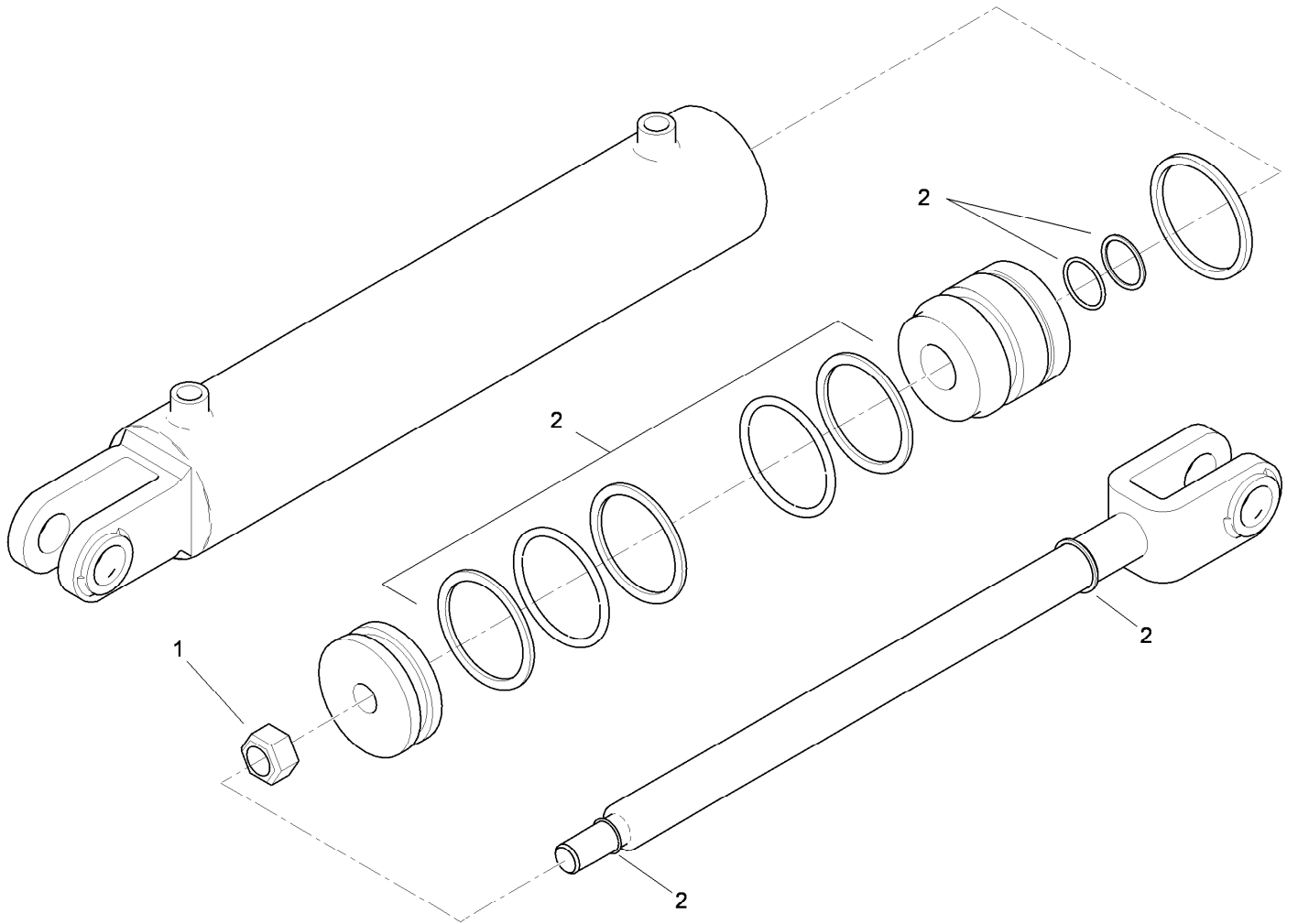


## Lift Arm Assembly No. 6 and 7

Ref.	Part Number	Qty.	Description
1	3256-62	4	Washer-Flat
2	23-2610-01	2	Link ASM
5	3272-10	4	Pin-Cotter
6	5-2942	4	Shackle
7	283-10	4	Pin-Clevis
11	3-4636	2	Chain
12	302-5	4	Fitting-Grease
13	47-3590	1	Arm-Long, No. 6 Cutting Unit (Incl 14)
13	47-3600	1	Arm-Long, No. 7 Cutting Unit (Incl 14) ●
14	3-0348	16	Bushing
15	3-0128	4	Shaft
16	5-1720	8	Washer
17	3253-5	8	Washer-Lock
18	3211-4	8	Screw-HH

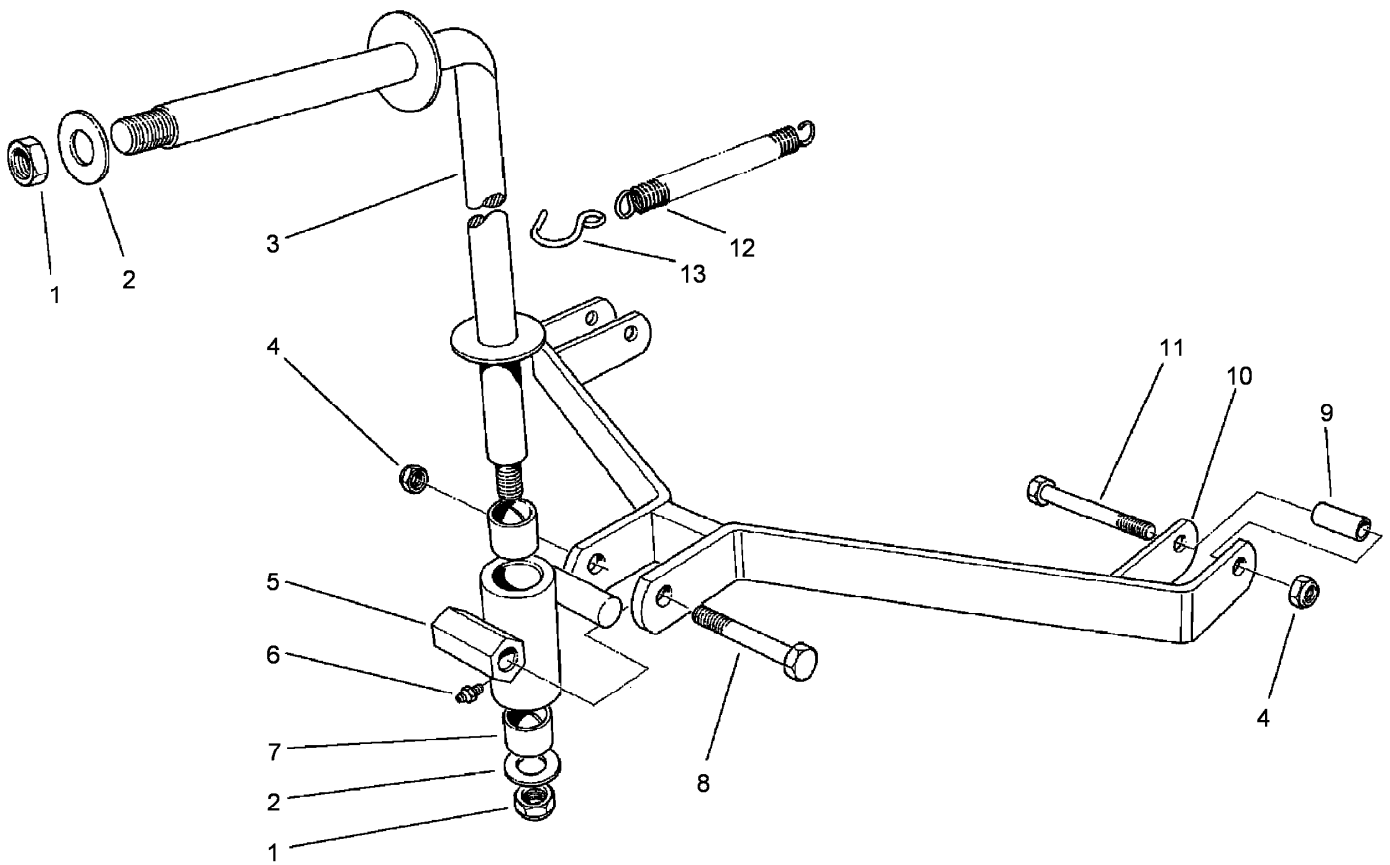
● Not illustrated





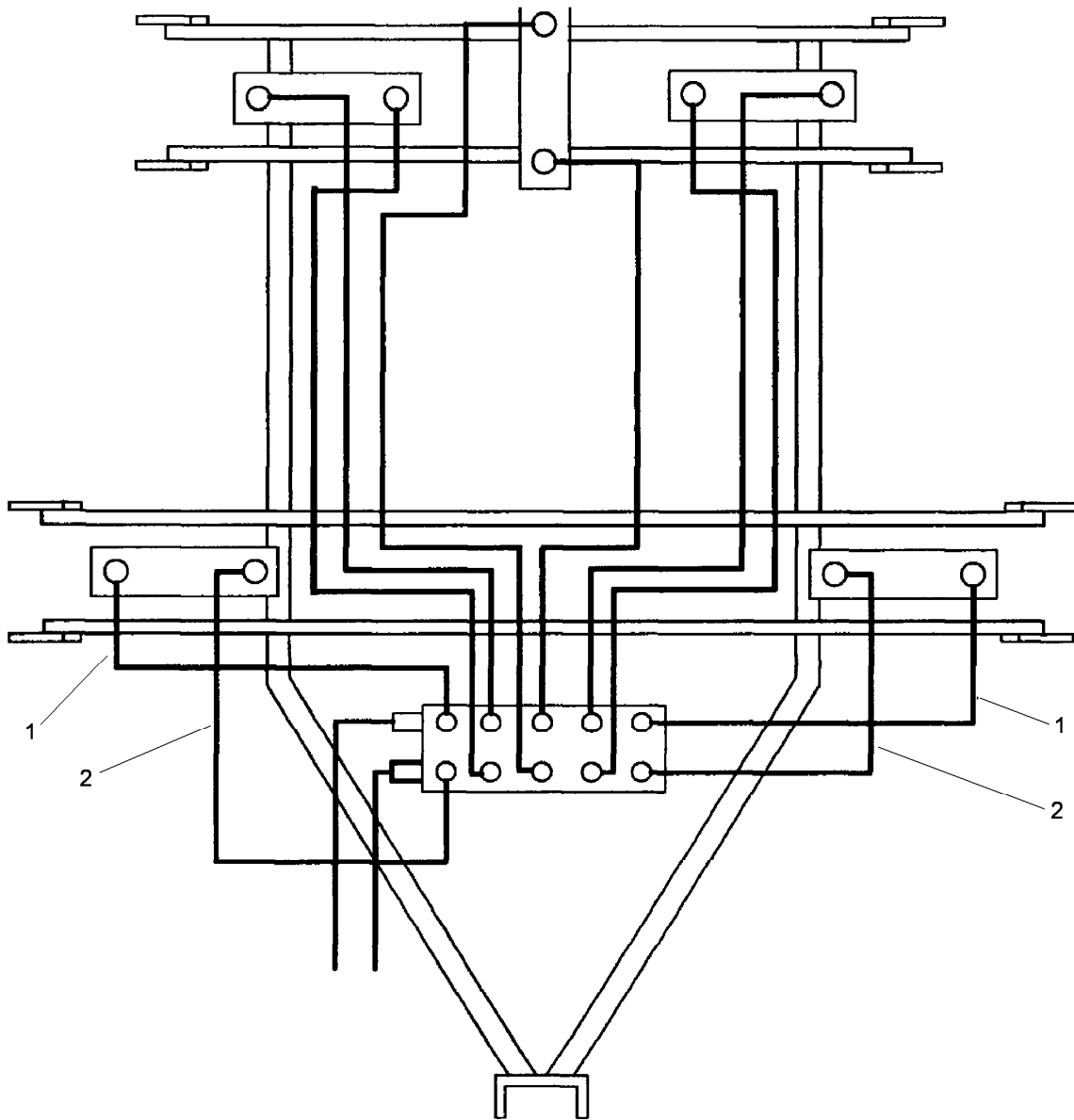
## Hydraulic Cylinder Assembly No. 115-4948-01 (12in)

<i>Ref.</i>	<i>Part Number</i>	<i>Qty.</i>	<i>Description</i>
1	22-8560	1	Locknut
2	119-2229	1	Seal Kit



## Lift Bail Assembly

<i>Ref.</i>	<i>Part Number</i>	<i>Qty.</i>	<i>Description</i>
1	3296-50	4	Nut-Lock, NI
2	3-8448	4	Washer-Thrust
3	28-8720	2	Bail-Lift, No. 4 And 5 Cutting Units
4	32153-5	6	Nut-Hex
5	6-1030-01	2	Housing Assembly (Incl. Ref. #6 & 7)
6	302-5	2	Fitting-Grease
7	3-0348	4	Bushing
8	325-17	2	Screw-HH
9	5-1091	4	Spacer
10	3-9280	2	Drawbar
11	325-14	4	Screw-HH
12	5-1706	2	Spring-Extension
13	3-2198	2	Hook



## Hydraulic Schematic

<i>Ref.</i>	<i>Part Number</i>	<i>Qty.</i>	<i>Description</i>
1	47-3750	2	HYD Hose ASM
2	47-3740	2	HYD Hose ASM



**Count on it.**