



Count on it.

Parts Catalog

Polar Trac Kit

Groundsmaster® 7200 Series Mower

Model No. 30370—Serial No. 31000001 and Up

Ordering Replacement Parts

To order replacement parts, please supply the part number, the quantity, and the description of each part desired.

Understanding Reference Numbers

Each identified part in an illustration has a reference number. The reference number for a part also appears in the parts list, along with other information about the part.

This catalog uses two special reference number formats, one to indicate parts in a service assembly and another to indicate the quantity of a given part in an illustration.

Service Assembly Reference Numbers

Parts in service assemblies have reference numbers in the form a:b. The a represents the reference number of the entire service assembly and the b represents a sequential number unique to each part within the service assembly.

For example, a wheel assembly might be identified by reference number 6, the tire by 6:1, the valve by 6:2, and the wheel by 6:3. When you order the assembly identified by reference number 6, you receive all parts identified by reference numbers 6:1, 6:2, and 6:3. However, you may also order any part individually. Reference numbers of this type appear in illustration and in parts lists.

Reference Numbers Indicating Quantity

In an illustration, if a reference number indicates more than one part, the reference number has the form nX y. The n represents the quantity of the part, the X is the multiplication symbol, and the y represents the reference number.

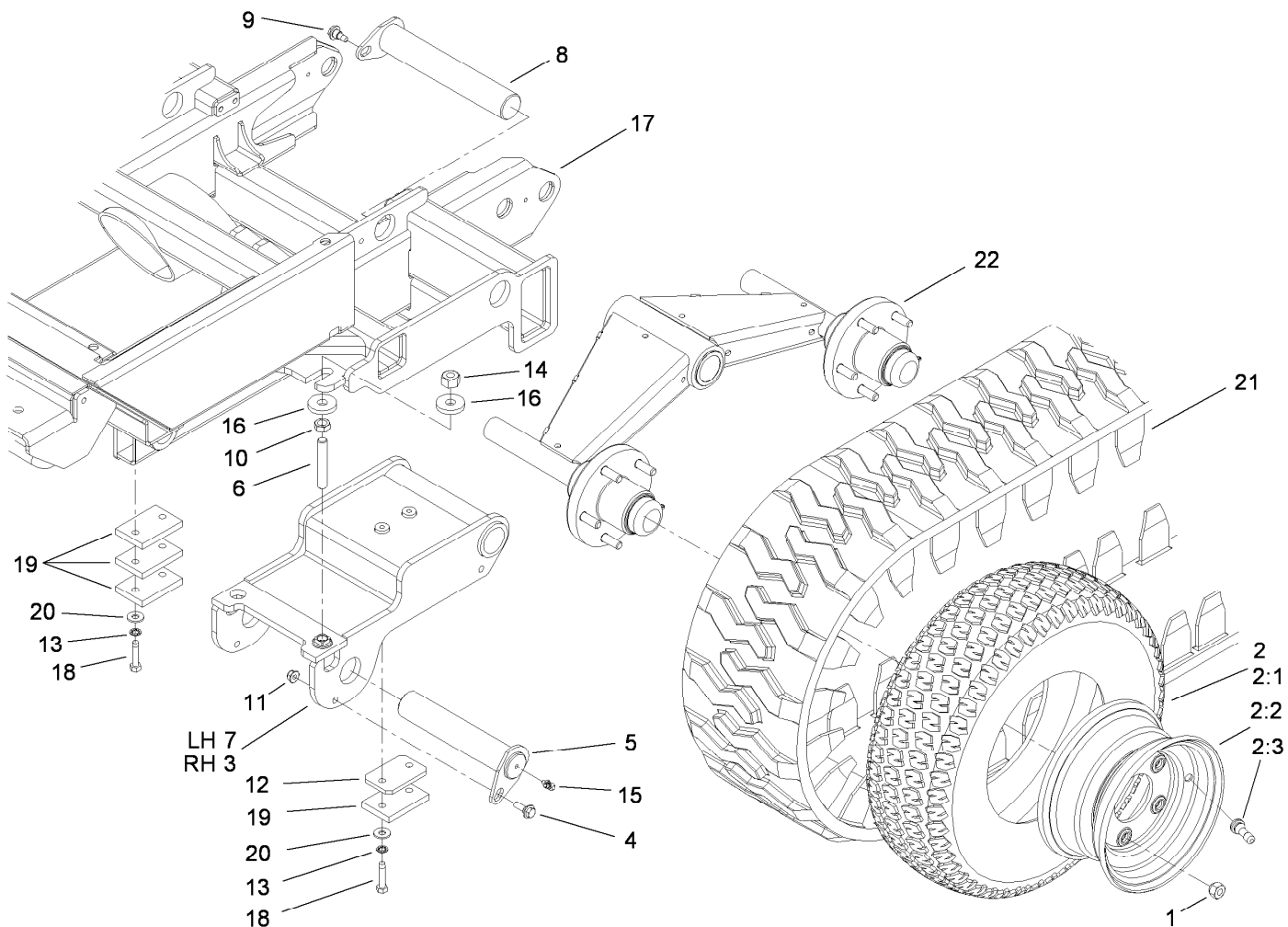
For example, in an illustration, the reference number 2X 37 means that two of the parts identified by reference number 37 are indicated.

List of Abbreviations

AR: as required	HSBH: hex socket button head	SFH: slotted fillister head
ASM: assembly	HSFH: hex socket flat head	SHH: slotted hex head
BBC: blade brake clutch	HSH: hex socket head	SHWH: slotted hex washer head
CARR: carriage	HWH: hex washer head	SPH: slotted pan head
CCW: counter clock wise	HWTF: hex washer head thread forming	SQH: square head
CW: clockwise	HYD: hydraulic	SRH: slotted round head
DEG: degrees	LH: left hand	STD: standard
ECM: electronic control module	NI: nylon insert	TAP: self tapping
EXT: external	NPTF: national pipe thread fine	TTH: torx truss head
FH: flat head	PFH: phillips flat head	
GA: gauge	PPH: phillips pan head	
HD: heavy-duty	PPHTF: phillips pan head thread forming	
HF: hex flange	PRH: phillips round head	
HH: hex head	PTH: phillips truss head	
HHF: hex head flange	PTO: power-take-off	
HHFTF: hex head flange thread forming	RH: right hand	
HJ: hex jam	ROPS: roll-over protection system	
HLH: hex lag head	RRB: rear roller brush	
HOC: height-of-cut		

Contents

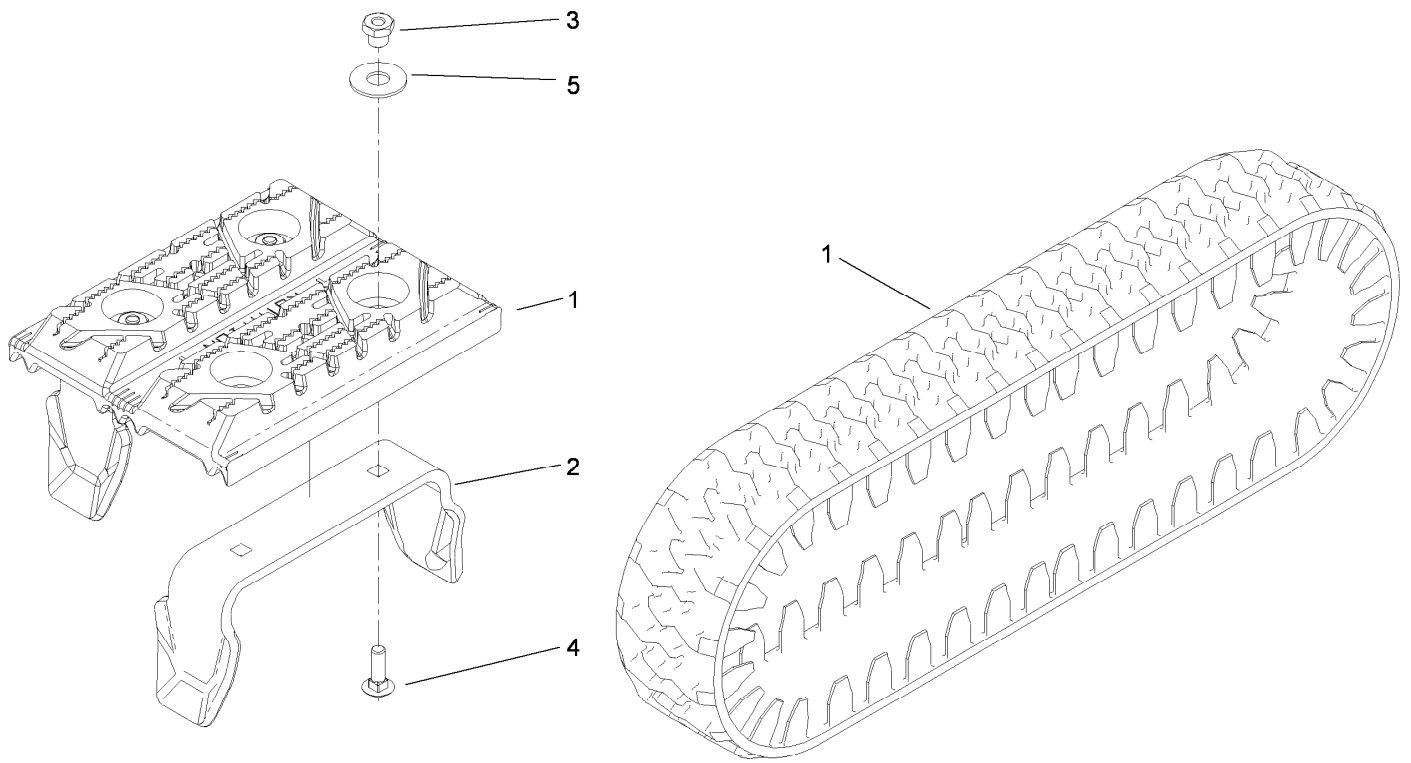
Track and Frame Assembly	4
Drive Track Assembly No. 108-5164	5
Bogie Assembly No. 112-1693.....	6
Foot Control Assembly	7
Hydraulic Assembly	8
Hydraulic Cylinder Assembly No. 117-9227.....	9
2-Spool Hydraulic Valve Assembly No. 110-3588.....	10
Skid Plate Assembly	11
Change Over Assembly	12



Track and Frame Assembly

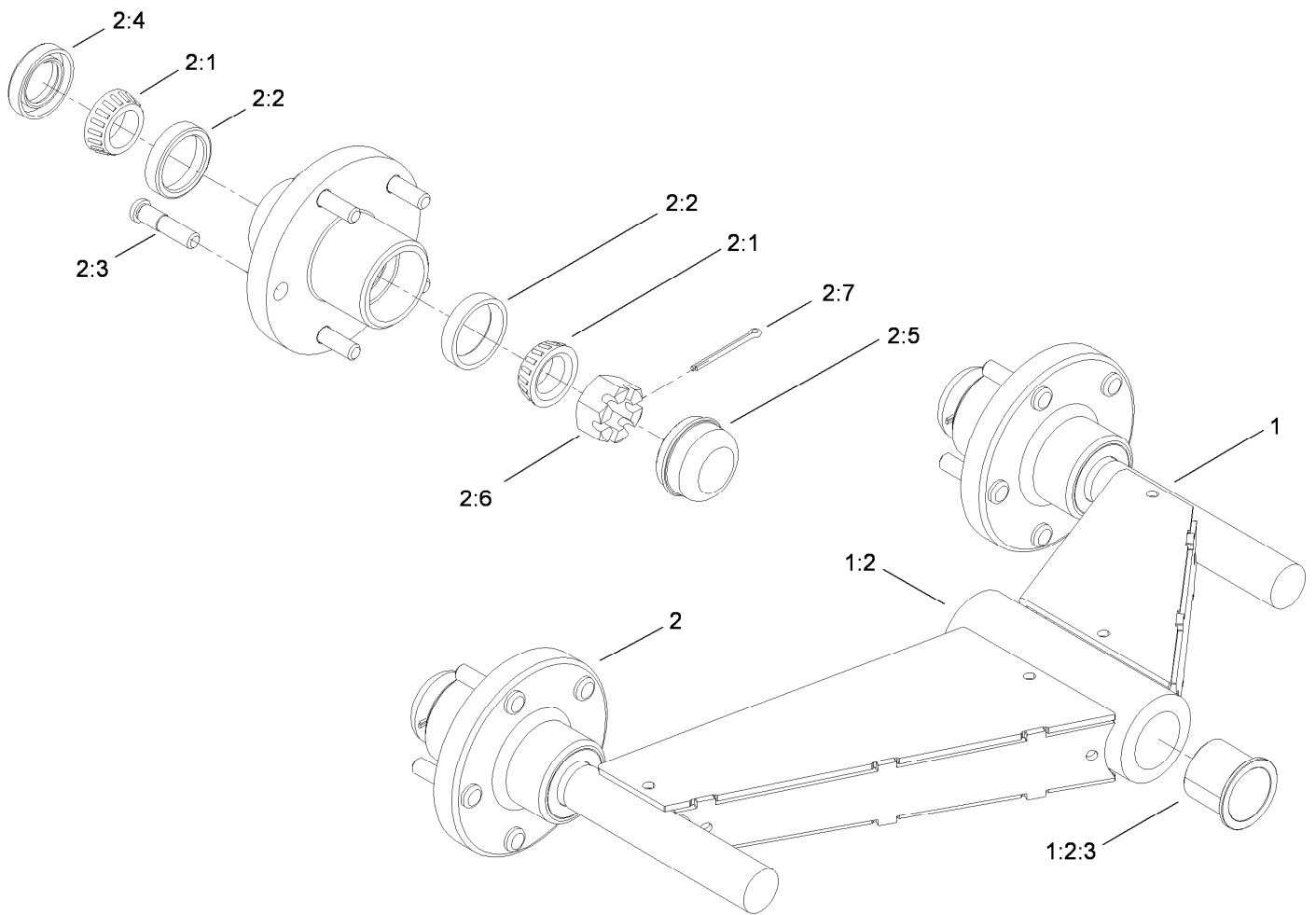
Ref.	Part Number	Qty.	Description
1	23-7270	20	Nut-Wheel
2	110-5465	6	Wheel And Tire ASM
2:1	98-2662	1	Tire
2:2	110-5466	1	Wheel
2:3	232-27	1	Stem-Valve
3	110-9793-03	1	RH Pivot ASM
4	27-0410	2	Screw-Shoulder
5	108-9857	2	Lower Pivot Pin ASM
6	105-1088	2	Stud
7	108-5195-03	1	LH Pivot ASM
8	110-9765	2	Upper Pivot Pin ASM
9	99-5105	2	Bolt-Shoulder
10	3218-5	2	Nut-Jam

Ref.	Part Number	Qty.	Description
11	104-8300	2	Nut-Flange, NI
12	110-5454	2	Plate-Spacer
13	3254-2	8	Washer-Lock, Internal
14	3296-25	2	Nut-Lock, NI
15	302-60	2	Fitting-Grease, 90 DEG
16	30-8770	4	Washer
17	110-9767-03	1	Frame ASM
18	32144-57	8	Screw
19	69-9290	8	Pad-Bumper
20	3256-3	8	Washer-Flat
21	108-5164	2	Drive Track ASM
22	112-1693	2	Bogie ASM



Drive Track Assembly No. 108-5164

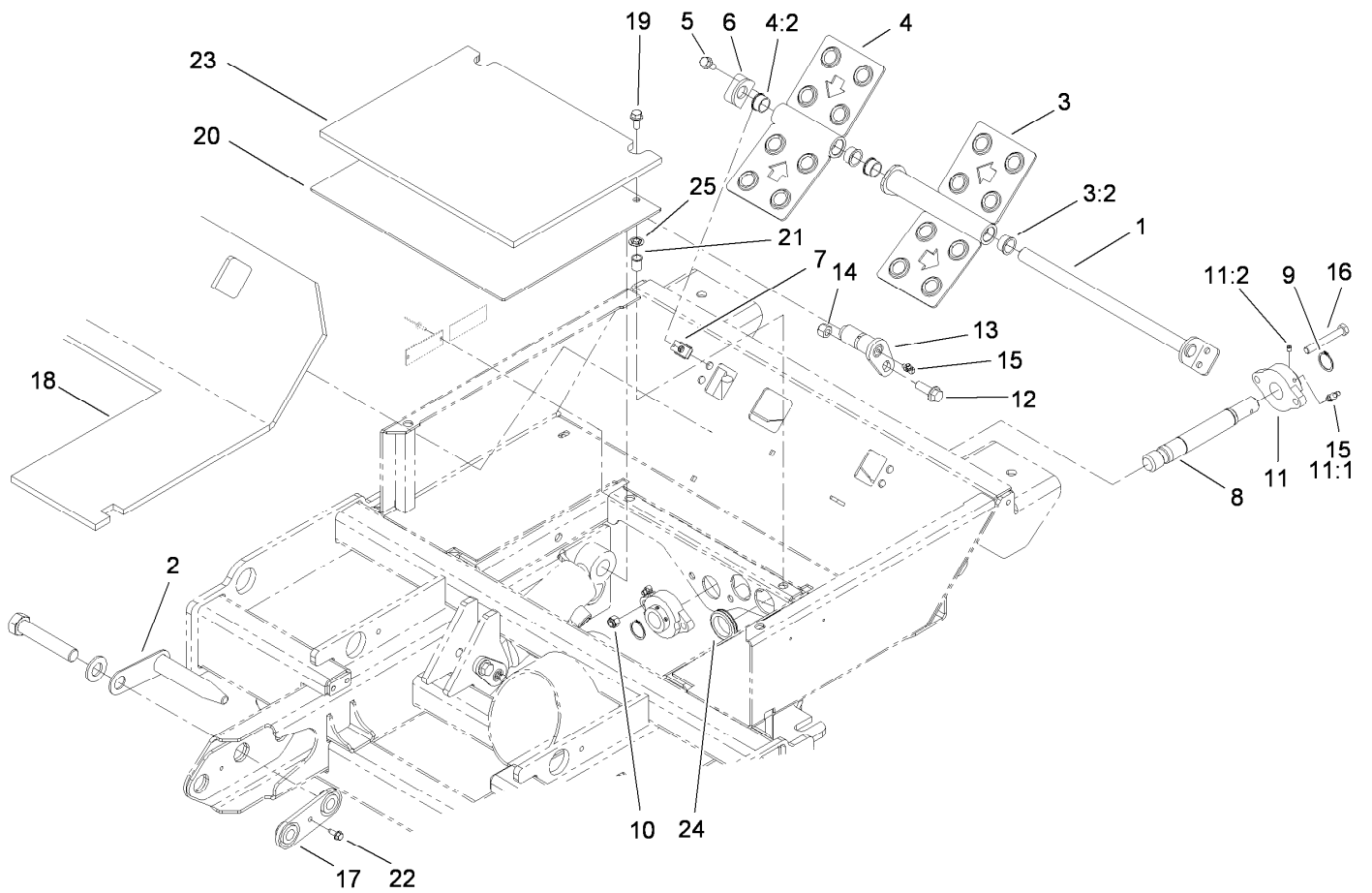
<i>Ref.</i>	<i>Part Number</i>	<i>Qty.</i>	<i>Description</i>
1	110-9786	1	Track-Rubber, Molded
2	110-9787	40	Guide-Track
3	110-9788	80	Nut-T, Plated
4	3230-2	80	Bolt-CARR
5	110-9789	80	Washer-Flat



Bogie Assembly No. 112-1693

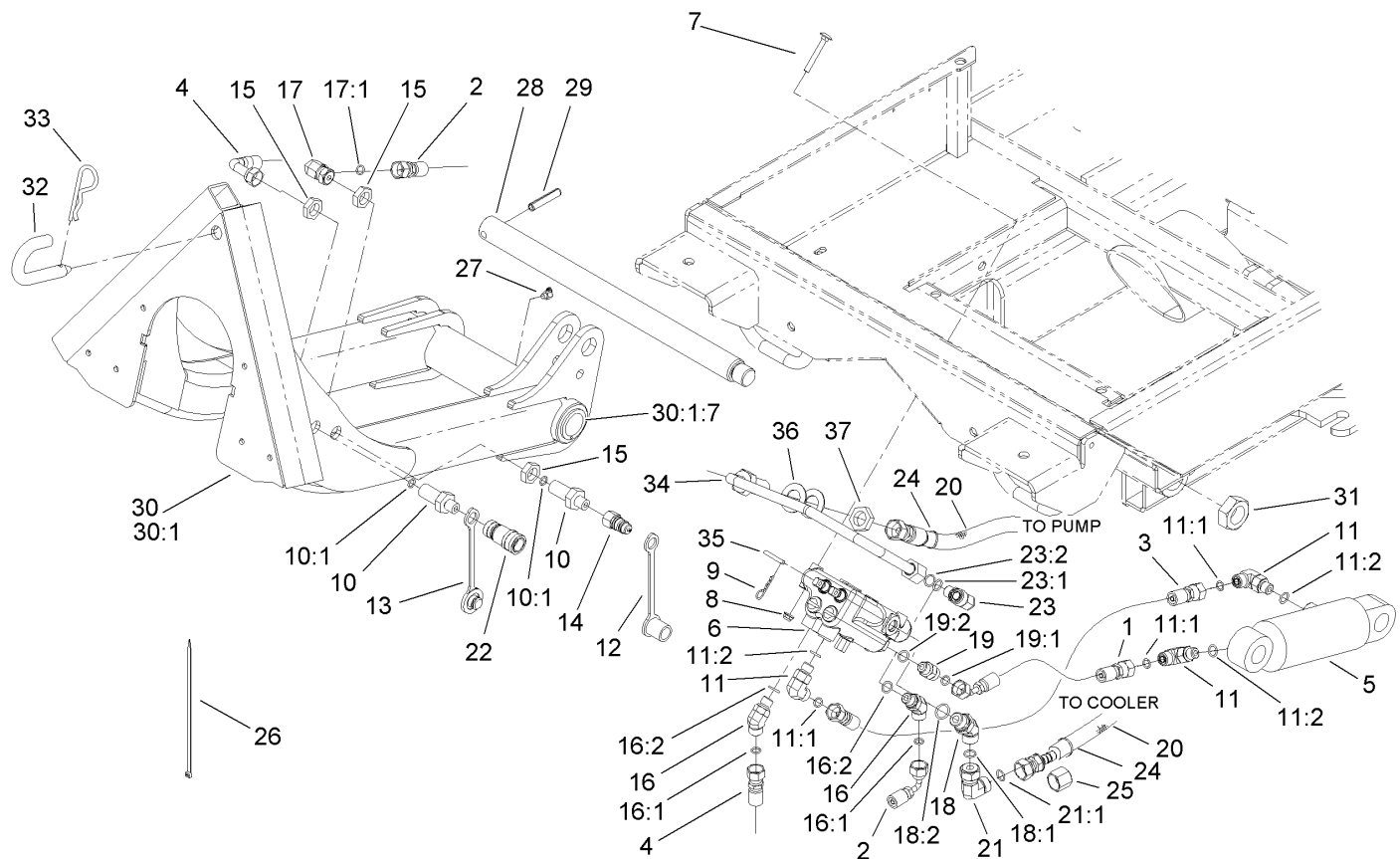
Ref.	Part Number	Qty.	Description
1		1	Pivot Arm ASM ●
1:2		1	Hub ASM ●
1:2:3	95-8805	2	Bushing
2	107-2615	2	Hub ASM
2:1	254-92	2	Cone-Bearing, Outer
2:2	254-72	2	Bearing-Cup, Tapered
2:3	69-2990	5	Stud-Wheel
2:4	112-1690	1	Seal-Oil
2:5	112-1494	1	Cap-Dust
2:6	32136-11	1	Nut-Hex, Slot
2:7	3272-20	1	Pin-Cotter

● Not serviced separately



Foot Control Assembly

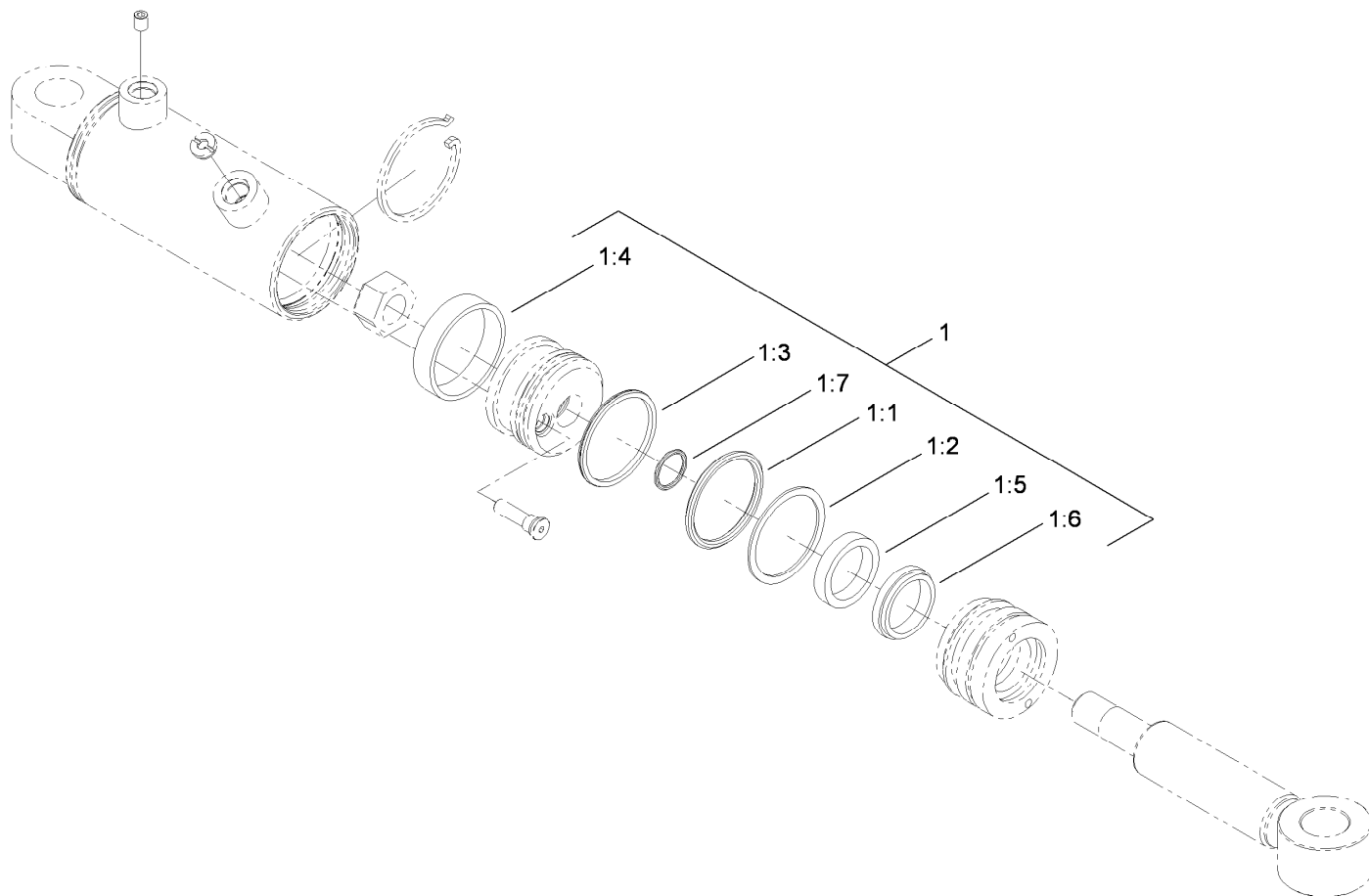
<i>Ref.</i>	<i>Part Number</i>	<i>Qty.</i>	<i>Description</i>	<i>Ref.</i>	<i>Part Number</i>	<i>Qty.</i>	<i>Description</i>
1	108-5181	1	Control Pivot Shaft ASM	12	3234-15	2	Screw
2	108-9870	2	Coupler Pin ASM	13	98-2654	2	Pivot Pin ASM
3	112-9587	1	RH Pedal ASM	14	3296-48	2	Nut-Lock, NI
3:2	256-252	2	Bearing-Flange	15	302-60	4	Fitting-Grease, 90 DEG
4	112-9588	1	LH Pedal ASM	16	323-13	2	Screw-HH
4:2	256-252	2	Bearing-Flange	17	110-9785	2	Retainer Plate ASM
5	3234-5	4	Screw-HHF	18	112-9556	1	Floormat-Platform
6	108-5178	1	Ear-Pivot	19	3234-5	2	Screw-HHF
7	110-3510	4	Nut-Retainer	20	108-9866-03	1	Plate-Cover
8	107-2604	1	Shaft	21	32148-7	2	Nut-Insert
9	32151-29	2	Ring-Retaining	22	32144-10	2	Screw-HWH
10	3296-39	2	Nut-Lock, NI	23	112-9555	1	Panel-Access, Floor
11	107-7851	2	Bearing-Flange, 2 Bolt	24	240-3	4	Grommet-Rubber
11:1	302-5	1	Fitting-Grease	25	117-2749	2	Nut-Push
11:2	3245-35	2	Screw-Set				



Hydraulic Assembly

Ref.	Part Number	Qty.	Description	Ref.	Part Number	Qty.	Description
1	110-8223	1	HYD Hose ASM	19	340-2	1	Fitting-HYD, Straight
2	110-8222	1	HYD Hose ASM	19:1	237-22	1	O-Ring
3	110-8224	1	HYD Hose ASM	19:2	237-42	1	O-Ring
4	110-8225	1	HYD Hose ASM	20	112-1685	2	Cover-Hose
5	117-9227	1	Cylinder-HYD	21	94-6031	1	Fitting-HYD
6	110-3588	1	Valve-Hydraulic, 2 Spool	21:1	237-30	1	O-Ring
7	3230-33	2	Screw-CARR	22	63-1220	1	Coupler-Disconnect, Quick
8	104-7201	2	Nut-HF	23	340-99	1	Fitting-HYD, 90 DEG
9	9335044	2	Pin-Hair	23:1	237-30	1	O-Ring
10	108-9800	2	Fitting-Bulkhead	23:2	237-42	1	O-Ring
10:1	237-22	1	O-Ring	24	3290-378	8	Tie-Cable
11	340-77	3	Fitting-HYD, 90 DEG	25	340-152	2	Cap-HYD
11:1	237-22	1	O-Ring	26	3290-379	4	Tie-Cable
11:2	237-42	1	O-Ring	27	302-11	1	Fitting-Lube, 45 DEG
12	353-985	1	Cap-Dust	28	107-2622	1	Pin-Arm, Lift
13	353-984	1	Plug-Dust	29	32121-110	1	Pin-Roll, Slotted
14	63-1240	1	Nipple-Disconnect, Quick	30	112-6370-03	1	Lift Arm ASM
15	340-70	3	Nut-Lock	30:1		1	Arm-Lift ●
16	340-87	2	Fitting-HYD, 45 DEG	30:1:7	104-0015	2	Bushing-Flange
16:1	237-22	1	O-Ring	31	3296-49	1	Nut-Lock, NI
16:2	237-42	1	O-Ring	32	110-9792	1	Pin-Lock
17	340-159	1	Fitting-HYD, 90 DEG	33	3290-256	1	Pin-Hair
17:1	237-22	2	O-Ring	34	112-9590	1	HYD Tube ASM
18	340-101	1	Fitting-HYD, 45 DEG	35	108-9871	2	Link-Lever, Valve
18:1	237-30	1	O-Ring	36	69-8930	2	Washer
18:2	237-79	1	O-Ring	37	340-127	1	Nut-Bulkhead

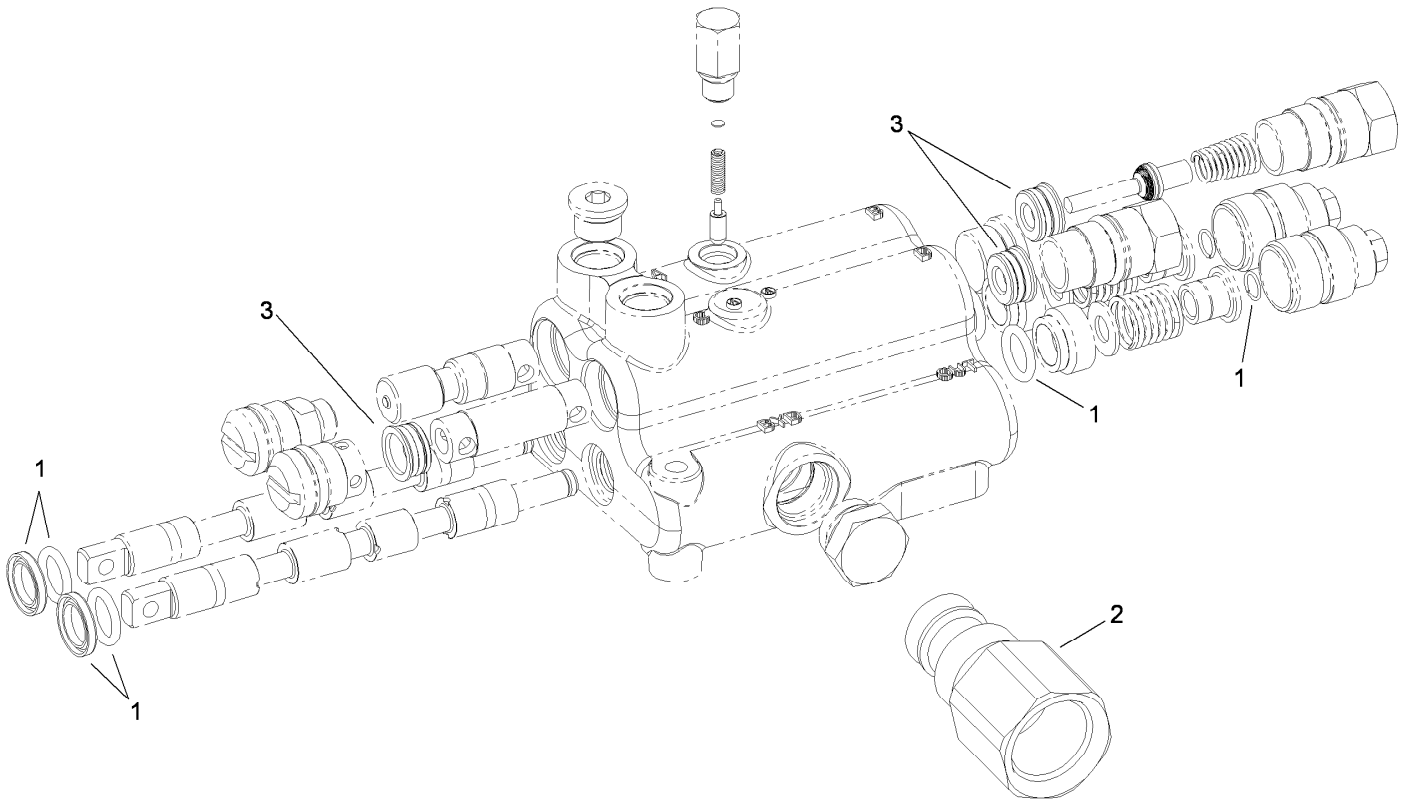
● Not serviced separately



Hydraulic Cylinder Assembly No. 117-9227

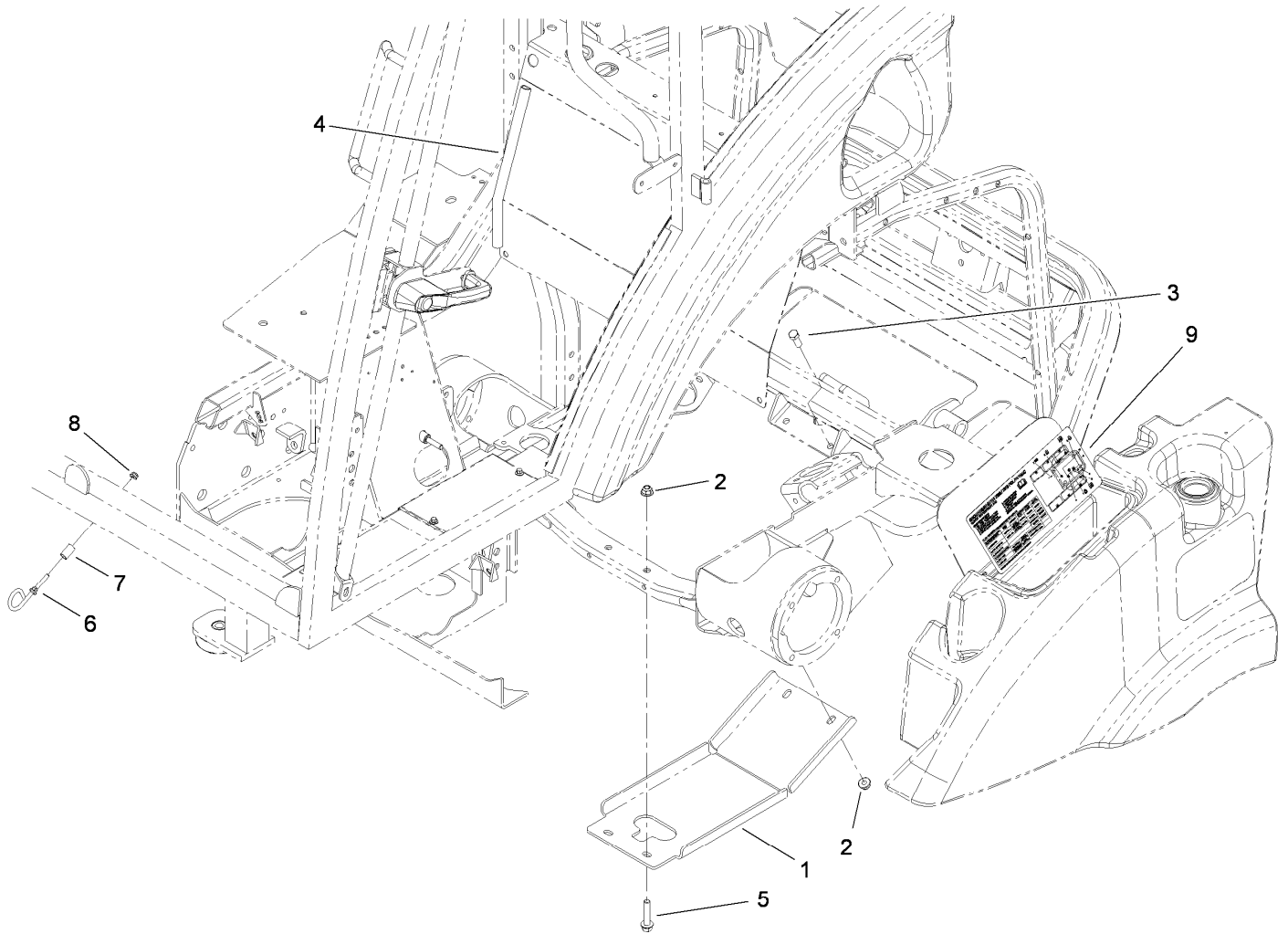
<i>Ref.</i>	<i>Part Number</i>	<i>Qty.</i>	<i>Description</i>
1	114-4049	1	Seal Kit
1:1		1	O-Ring ●
1:2		1	Backup ●
1:3		1	Seal-Bp ●
1:4		1	Ring-Wear ●
1:5		1	Polypak ●
1:6		1	Seal-Dust ●
1:7		1	O-Ring ●

● Not serviced separately



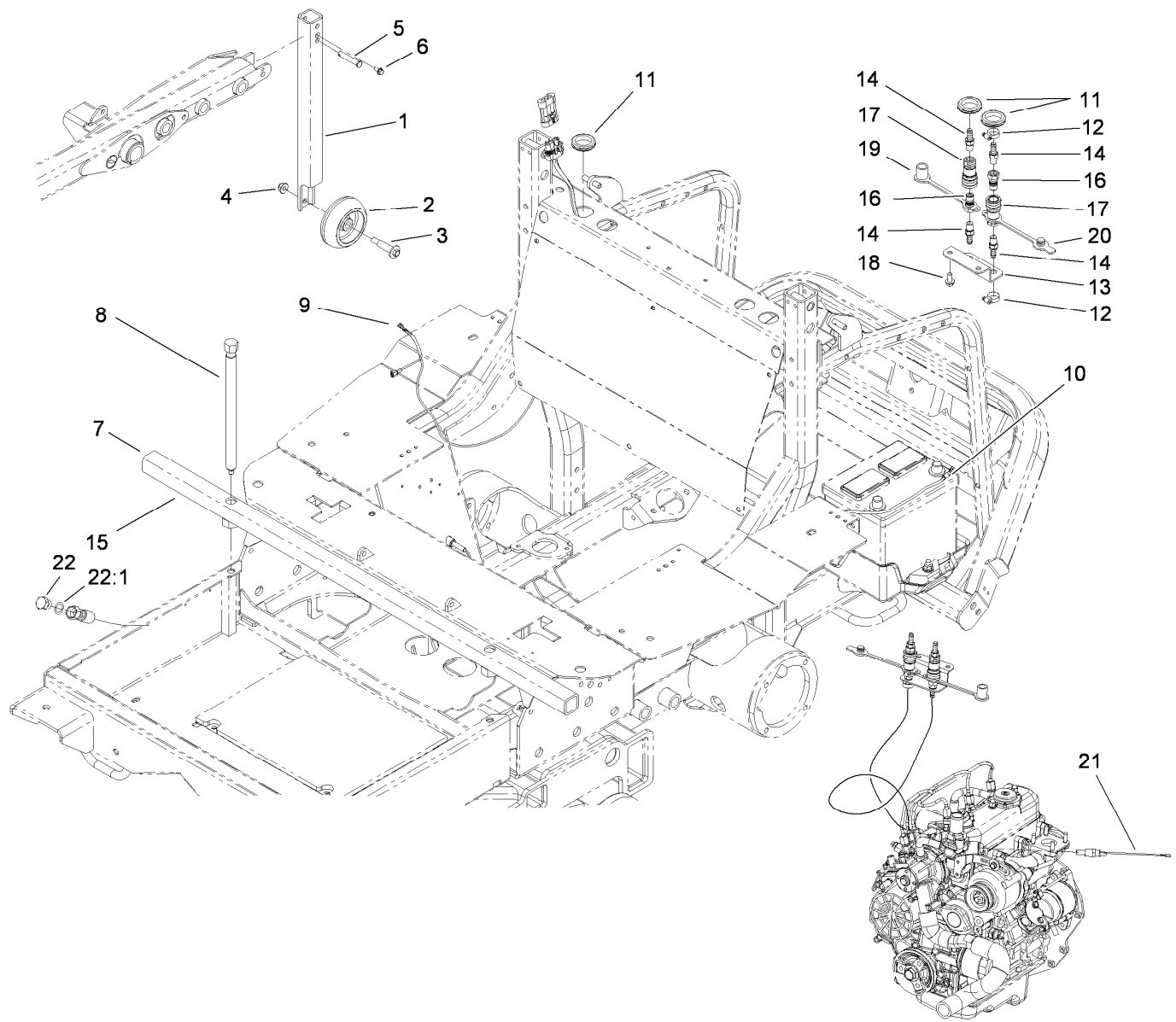
2-Spool Hydraulic Valve Assembly No. 110-3588

<i>Ref.</i>	<i>Part Number</i>	<i>Qty.</i>	<i>Description</i>
1	99-3530	1	Seal Kit
2	110-5490	1	Power Beyond Sleeve Kit
3	117-9228	3	Seat



Skid Plate Assembly

<i>Ref.</i>	<i>Part Number</i>	<i>Qty.</i>	<i>Description</i>
1	110-5516-03	1	Plate-Skid
2	104-8301	4	Nut-Flange, NI
3	323-6	2	Screw-HH
4	112-9581	2	Seal-Bulb
5	3234-19	2	Screw-HHF
6	107-3908	1	Guide-Rope, Upper
7	85-0290	1	Spacer-Pivot, Seat
8	104-7201	1	Nut-HF
9	114-4043	1	Decal-Service Instructions



Change Over Assembly

<i>Ref.</i>	<i>Part Number</i>	<i>Qty.</i>	<i>Description</i>	<i>Ref.</i>	<i>Part Number</i>	<i>Qty.</i>	<i>Description</i>
1	110-5491-03	2	Tube-Upright, Deck Removal	12	2412-36	4	Clamp-Hose
2	701756	2	Wheel-Gage	13	112-1498	1	Plate-Bulkhead
3	56-6591	2	Screw-Shoulder, HWH	14	108-0342	4	Fitting-Straight
4	104-8301	2	Nut-Flange, NI	15	112-6312	3	Decal-Warning
5	283-82	2	Pin-Clevis	16	108-9899	2	Coupler
6	32144-4	2	Screw-HWH	17	108-9898	2	Coupler
7	110-5456-03	1	Tube ASM	18	32144-14	2	Screw-HWHTF
8	112-6358	2	Screw	19	106-7881	1	Cap-Dust, HYD
9	110-1667	1	Harness-Wire	20	106-7882	1	Plug-Dust, HYD
10	108-9455	1	Harness-Wire, Fusible Link	21	112-6347	1	Switch-Temp, Dual
11	240-3	3	Grommet-Rubber	22	106-8100	2	Plug-HYD
				22:1	237-79	1	O-Ring

Notes:

Notes:

Notes:



Count on it.