



Count on it.

Parts Catalog

Debris Blower 600

Model No. 44536—Serial No. 310000001 and Up

Ordering Replacement Parts

To order replacement parts, please supply the part number, the quantity, and the description of each part desired.

Understanding Reference Numbers

Each identified part in an illustration has a reference number. The reference number for a part also appears in the parts list, along with other information about the part.

This catalog uses two special reference number formats, one to indicate parts in a service assembly and another to indicate the quantity of a given part in an illustration.

Service Assembly Reference Numbers

Parts in service assemblies have reference numbers in the form a:b. The a represents the reference number of the entire service assembly and the b represents a sequential number unique to each part within the service assembly.

For example, a wheel assembly might be identified by reference number 6, the tire by 6:1, the valve by 6:2, and the wheel by 6:3. When you order the assembly identified by reference number 6, you receive all parts identified by reference numbers 6:1, 6:2, and 6:3. However, you may also order any part individually. Reference numbers of this type appear in illustration and in parts lists.

Reference Numbers Indicating Quantity

In an illustration, if a reference number indicates more than one part, the reference number has the form nX y. The n represents the quantity of the part, the X is the multiplication symbol, and the y represents the reference number.

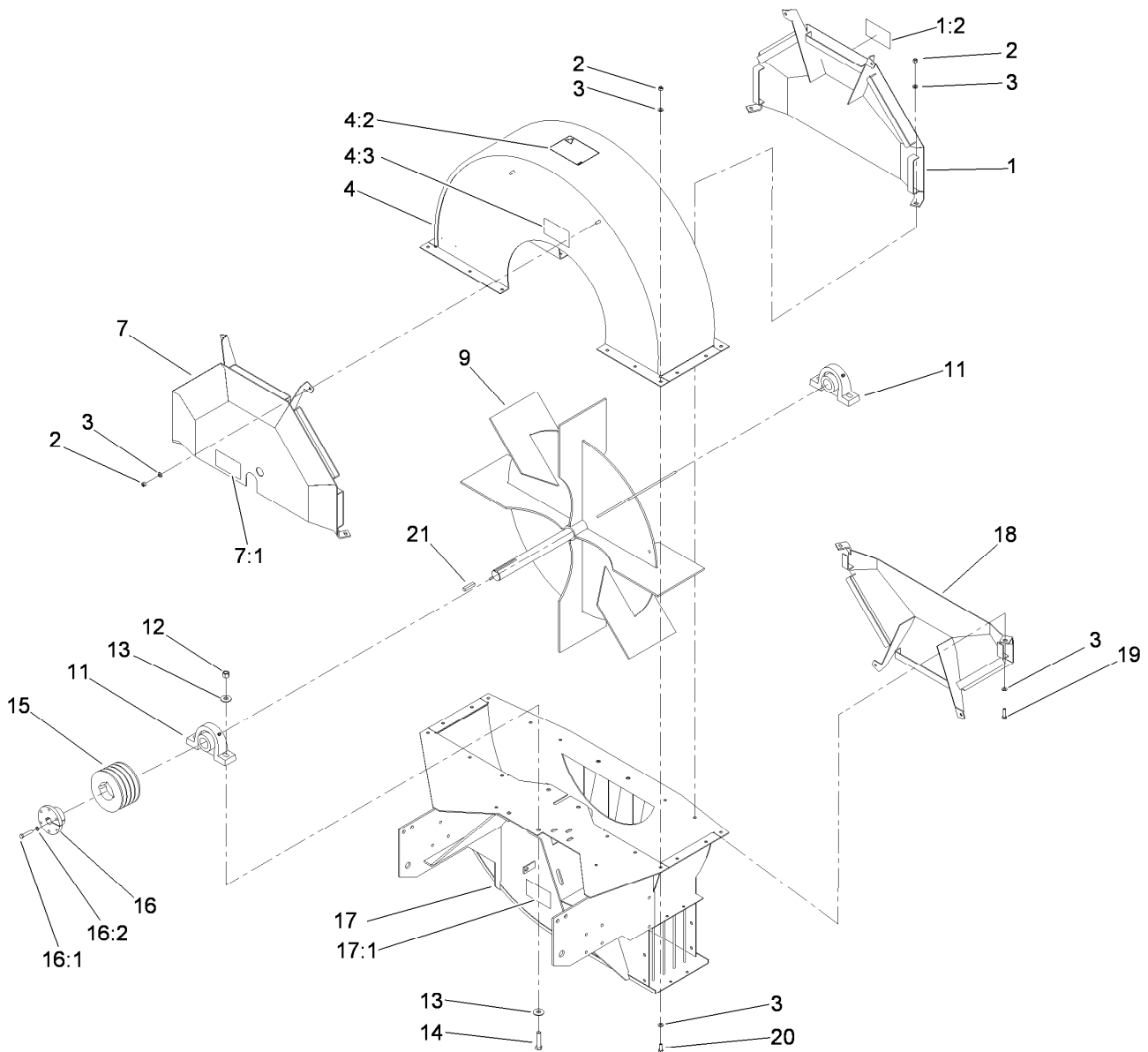
For example, in an illustration, the reference number 2X 37 means that two of the parts identified by reference number 37 are indicated.

List of Abbreviations

AR: as required	HSBH: hex socket button head	SFH: slotted fillister head
ASM: assembly	HSFH: hex socket flat head	SHH: slotted hex head
BBC: blade brake clutch	HSH: hex socket head	SHWH: slotted hex washer head
CARR: carriage	HWH: hex washer head	SPH: slotted pan head
CCW: counter clock wise	HWTF: hex washer head thread forming	SQH: square head
CW: clockwise	HYD: hydraulic	SRH: slotted round head
DEG: degrees	LH: left hand	STD: standard
ECM: electronic control module	NI: nylon insert	TAP: self tapping
EXT: external	NPTF: national pipe thread fine	TTH: torx truss head
FH: flat head	PFH: phillips flat head	
GA: gauge	PPH: phillips pan head	
HD: heavy-duty	PPHTF: phillips pan head thread forming	
HF: hex flange	PRH: phillips round head	
HH: hex head	PTH: phillips truss head	
HHF: hex head flange	PTO: power-take-off	
HHFTF: hex head flange thread forming	RH: right hand	
HJ: hex jam	ROPS: roll-over protection system	
HLH: hex lag head	RRB: rear roller brush	
HOC: height-of-cut		

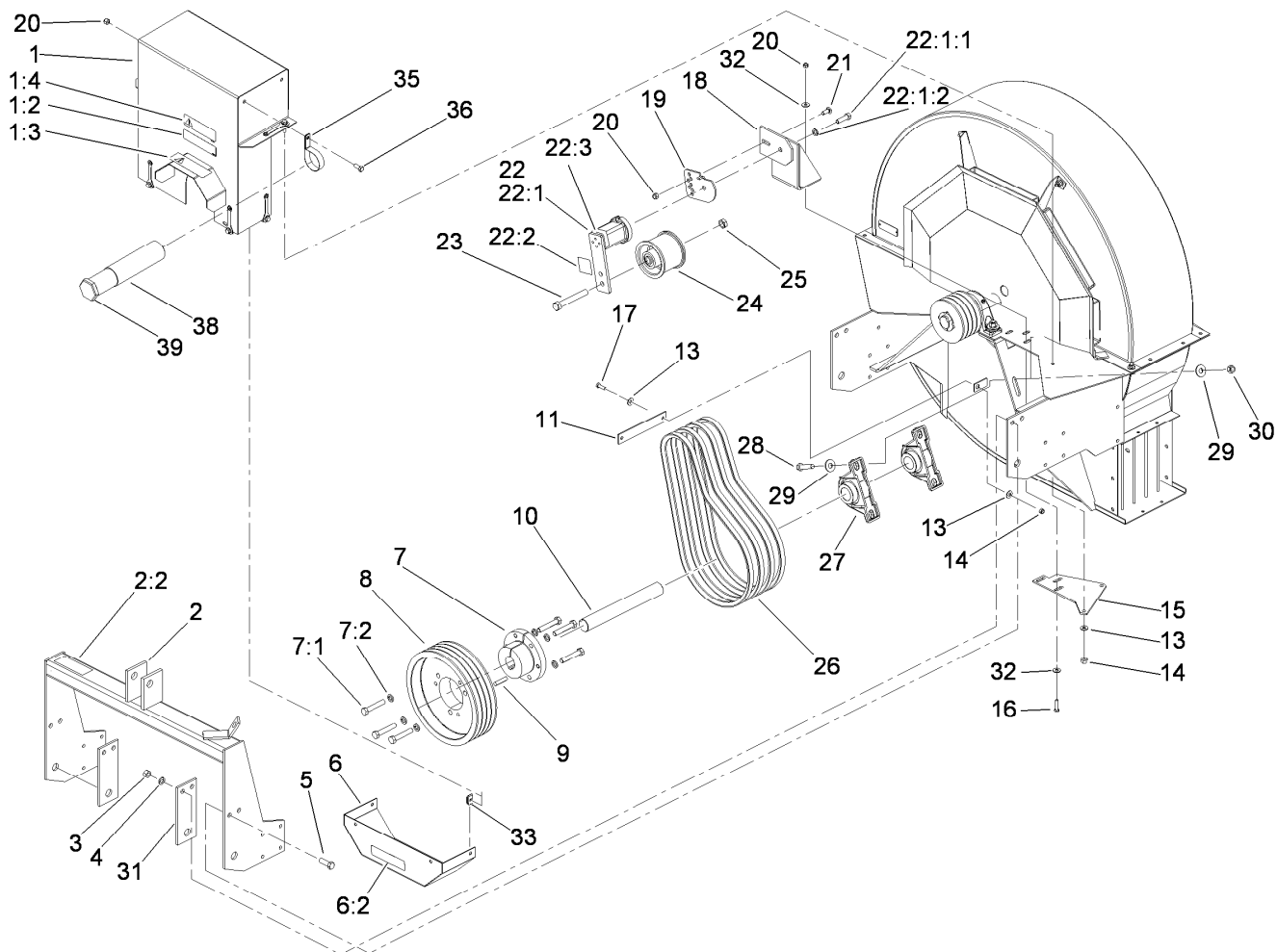
Contents

- Housing and Impeller Assembly..... 4
- Drive Assembly..... 5
- Chute and Roller Assembly 6
- Drive Shaft Assembly No. 105-4924..... 7
- Joint, Shaft and Guard Assembly No. 107-1144 8



Housing and Impeller Assembly

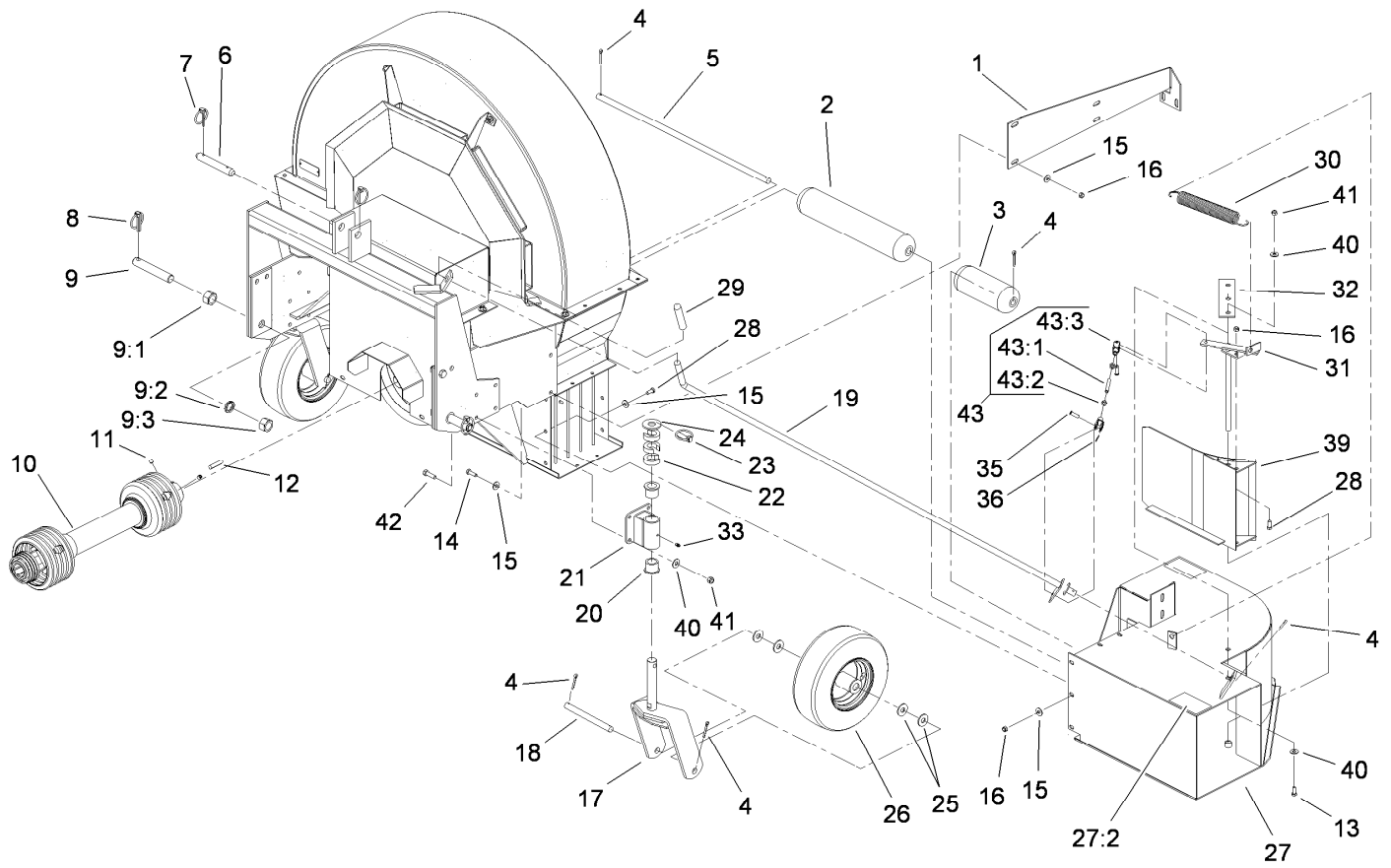
<i>Ref.</i>	<i>Part Number</i>	<i>Qty.</i>	<i>Description</i>	<i>Ref.</i>	<i>Part Number</i>	<i>Qty.</i>	<i>Description</i>
1	105-0689	1	Shield-Fan	13	3256-6	8	Washer-Flat
1:2	67-1300	1	Decal	14	325-9	4	Screw-HH
2	3296-29	23	Nut-Lock, NI	15	106-0354	1	Pulley
3	3256-23	40	Washer-Flat	16	106-0359	1	Bushing-Pulley
4	107-1388	1	Blower Top ASM	16:1	321-11	3	Screw-HH
4:2	98-3110	1	Decal-Caution	16:2	3253-3	3	Washer-Lock
4:3	105-0709	2	Decal-Warning	17	107-1386	1	Frame ASM
7	105-0713	1	Shield-Fan, Front	17:1	105-0709	2	Decal-Warning
7:1	105-0709	1	Decal-Warning	18	LDB11400-01	1	Shield-Fan, Lower
9	106-0345-01	1	Impeller	19	322-6	4	Screw-HH
11	105-0621	2	Bearing-Block, Pillow	20	322-5	13	Screw-HH
12	3296-23	4	Nut-Lock, NI	21	41-004-5241	1	Key



Drive Assembly

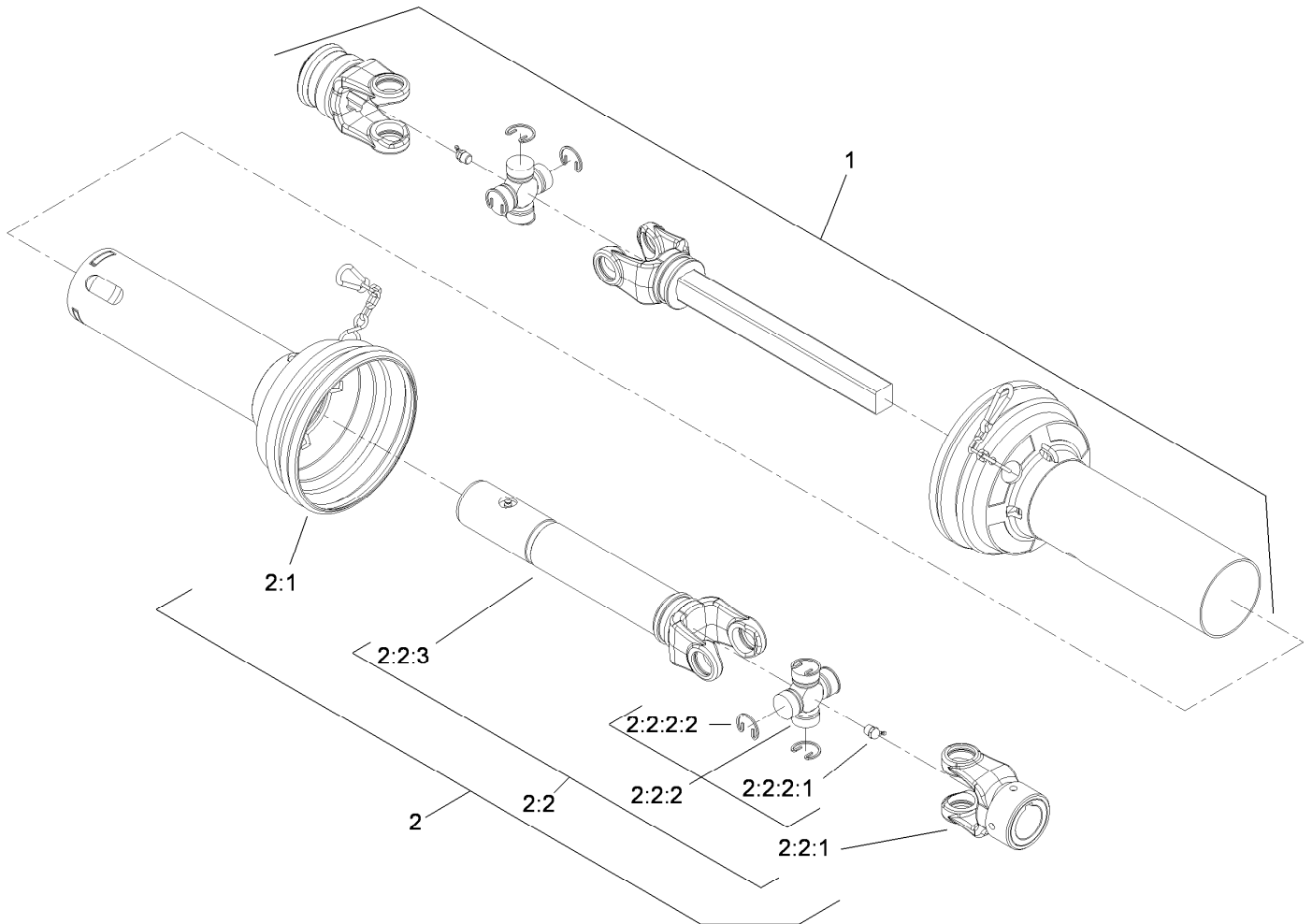
Ref.	Part Number	Qty.	Description	Ref.	Part Number	Qty.	Description
1	119-3011	1	Shield-Belt	19	105-4787-01	1	Stabilizer-Tensioner
1:2	93-7814	1	Decal-Danger	20	3296-39	4	Nut-Lock, NI
1:3	105-0628	1	Decal-Caution, U-Joint	21	3231-2	1	Screw-CARR
1:4	105-0627	1	Decal-Caution	22	105-0667	1	Idler Tensioner ASM
2	105-0714	1	Hitch ASM	22:1		1	Tensioner-Idler ●
2:2	105-0707	1	Decal-Warning	22:1:1	33116-040	1	Screw-HH
3	3296-23	4	Nut-Lock, NI	22:1:2	3253-7	1	Washer-Lock
4	3256-6	4	Washer-Flat	22:2	105-0668	1	Decal-Align
5	325-6	4	Screw-HH	22:3	105-0669	1	Decal-Angle
6	105-0686	1	Shield-Lower	23	3214-15	1	Screw-HH
6:2	93-7814	1	Decal-Danger	24	105-4821	1	Idler-Pulley
7	106-0361	1	Bushing-Pulley	25	3220-6	1	Nut-Jam
7:1	325-11	3	Screw-HH	26	LDB13000	4	V-Belt
7:2	3253-7	3	Washer-Lock	27	105-0621	2	Bearing-Block, Pillow
8	106-0356	1	Pulley	28	325-9	4	Screw-HH
9	41-004-5241	1	Key	29	3256-6	8	Washer-Flat
10	LDB12100	1	Shaft-Input	30	3296-23	4	Nut-Lock, NI
11	LDB15700-01	1	Stabilizer-Shield	31	LDB10300-01	2	Stiffener-Hitch
13	3256-23	4	Washer-Flat	32	3256-4	6	Washer-Flat
14	3296-29	3	Nut-Lock, NI	33	94-2413	4	U-Nut
15	LDB14200-01	1	Support-Deck	35	2412-133	2	R-Clamp
16	323-8	3	Screw-HH	36	323-5	2	Screw-HH
17	322-5	1	Screw-HH	38	104-7050	1	Tube-Manual
18	LDB13200-01	1	Mount-Idler	39	104-7048	1	Cap-Housing

● Not serviced separately



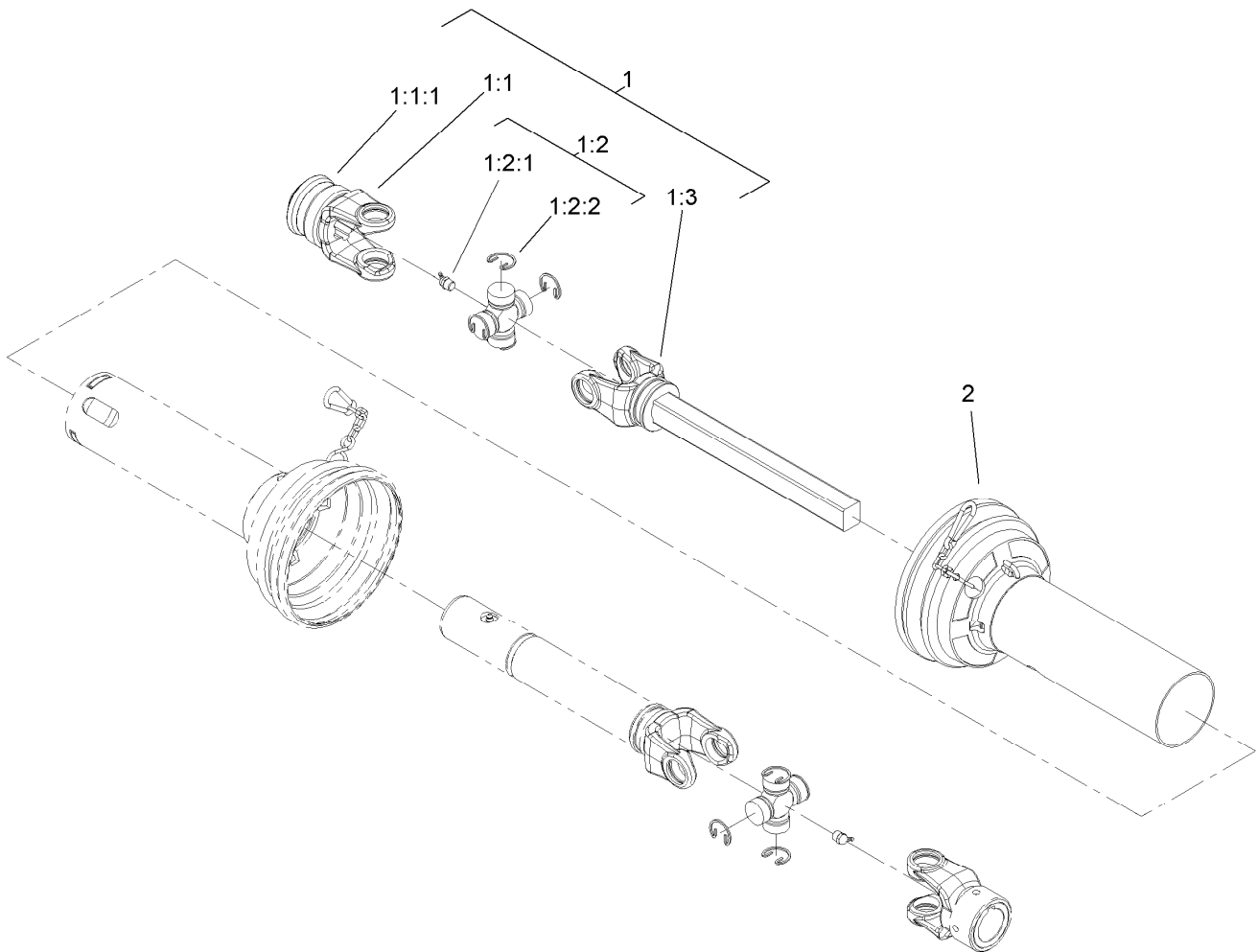
Chute and Roller Assembly

<i>Ref.</i>	<i>Part Number</i>	<i>Qty.</i>	<i>Description</i>	<i>Ref.</i>	<i>Part Number</i>	<i>Qty.</i>	<i>Description</i>
1	LDB11600-01	1	Brace-Discharge, Back	21	LDB11100-01	2	Mount-Caster
2	105-4823	1	Roller-Turf	22	LDB12600	6	Spacer-Slotted
3	LDB13300	1	Roller-Turf, Short	23	283-71	2	Pin-Lynch
4	3272-22	7	Pin-Cotter	24	3256-62	2	Washer-Flat
5	LDB13500	1	Axle-Roller	25	3256-7	8	Washer-Flat
6	92-1233	1	Pin-Clevis	26	LDB12500	2	Castor Wheel ASM
7	92-1298	2	Pin-Lynch	27	105-0688	1	Discharge-Chute
8	283-71	2	Pin-Lynch	27:2	105-0708	2	Decal-Danger
9	01-252-0010	2	Lift Arm Pin Adjustment ASM	28	322-3	13	Screw-HH
9:1	3220-8	1	Nut-Jam	29	PT503-00	1	Cover-Handle
9:2	3253-28	1	Washer-Lock/Sp	30	105-4825	1	Spring
9:3	3219-8	1	Nut-Hex	31	LDB10600-01	1	Pivot-Diverter
10	105-4924	1	Driveshaft ASM	32	LDB10800-01	1	Plate-Top, Pin
11	3247-2	2	Screw-Set, Hs	33	302-5	2	Fitting-Grease
12	41-004-5241	1	Key	35	283-1	2	Pin-Clevis
13	323-6	2	Screw-HH	36	3272-10	2	Pin-Cotter
14	322-5	6	Screw-HH	39	LDB11800-01	1	Gate ASM
15	3256-23	32	Washer-Flat	40	3256-24	12	Washer-Flat
16	3296-29	17	Nut-Lock, NI	41	3296-39	10	Nut-Lock, NI
17	LDB10900-01	2	Caster-Fork	42	323-7	8	Screw-HH
18	LDB11000	2	Axle-Wheel, Caster	43	115-6678	1	Chute Lever ASM
19	LDB10700-01	1	Handle-Diverter	43:1	LDB14400	1	Rod-Threaded
20	LDB11103	4	Bushing-Flange	43:2	3220-2	2	Nut-Jam
				43:3	1-303105	2	Yoke-Adjustable



Drive Shaft Assembly No. 105-4924

<i>Ref.</i>	<i>Part Number</i>	<i>Qty.</i>	<i>Description</i>
1	107-1144	1	Joint And Shaft Half ASM
2	107-1146	1	Joint And Tube Half ASM
2:1	107-1155	1	Inner Guard
2:2	107-1147	1	Joint And Tube Half ASM
2:2:1	107-1158	1	Yoke
2:2:2	72-7990	1	Cross And Bearing Kit
2:2:2:1	302-10	1	Fitting-Grease
2:2:2:2	107-1161	4	Clip Retaining
2:2:3	107-1157	1	Yoke, Tube And Slip Sleeve ASM



Joint, Shaft and Guard Assembly No. 107-1144

<i>Ref.</i>	<i>Part Number</i>	<i>Qty.</i>	<i>Description</i>
1	107-1145	1	Joint And Shaft Half ASM
1:1	107-1148	1	Yoke-Spring Lock ASM
1:1:1	99-4477	1	Yoke Spring Lock Repair Kit
1:2	72-7990	1	Cross And Bearing Kit
1:2:1	302-10	1	Fitting-Grease
1:2:2	107-1161	4	Clip Retaining
1:3	107-1149	1	Yoke And Shaft
2	107-1154	1	Outer Guard

Notes:

Notes:

Notes:



Count on it.