



Count on it.

Parts Catalog

**50cm Mulching/Rear Bagging
Lawn Mower**

Model No. 29642—Serial No. 310000001 and Up

Ordering Replacement Parts

To order replacement parts, please supply the part number, the quantity, and the description of each part desired.

Understanding Reference Numbers

Each identified part in an illustration has a reference number. The reference number for a part also appears in the parts list, along with other information about the part.

This catalog uses two special reference number formats, one to indicate parts in a service assembly and another to indicate the quantity of a given part in an illustration.

Service Assembly Reference Numbers

Parts in service assemblies have reference numbers in the form a:b. The a represents the reference number of the entire service assembly and the b represents a sequential number unique to each part within the service assembly.

For example, a wheel assembly might be identified by reference number 6, the tire by 6:1, the valve by 6:2, and the wheel by 6:3. When you order the assembly identified by reference number 6, you receive all parts identified by reference numbers 6:1, 6:2, and 6:3. However, you may also order any part individually. Reference numbers of this type appear in illustration and in parts lists.

Reference Numbers Indicating Quantity

In an illustration, if a reference number indicates more than one part, the reference number has the form nX y. The n represents the quantity of the part, the X is the multiplication symbol, and the y represents the reference number.

For example, in an illustration, the reference number 2X 37 means that two of the parts identified by reference number 37 are indicated.

List of Abbreviations

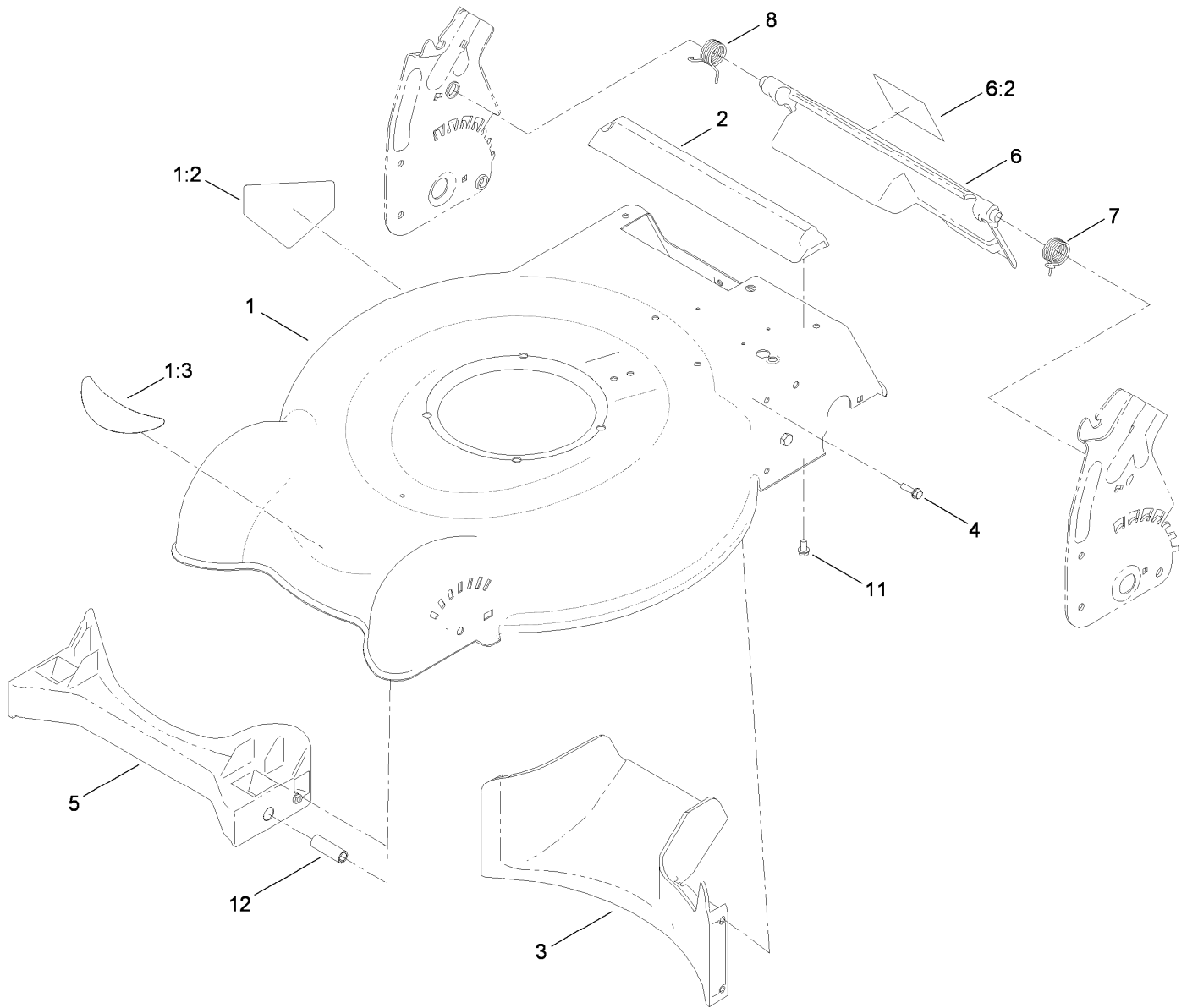
AR: as required
ASM: assembly
BBC: blade brake clutch
CARR: carriage
CCW: counter clock wise
CW: clockwise
DEG: degrees
ECM: electronic control module
EXT: external
FH: flat head
GA: gauge
HD: heavy-duty
HF: hex flange
HH: hex head
HHF: hex head flange
HHFTF: hex head flange thread forming
HJ: hex jam
HLH: hex lag head
HOC: height-of-cut

HSBH: hex socket button head
HSFH: hex socket flat head
HSH: hex socket head
HWH: hex washer head
HWHTF: hex washer head thread forming
HYD: hydraulic
LH: left hand
NI: nylon insert
NPTF: national pipe thread fine
PFH: phillips flat head
PPH: phillips pan head
PPHTF: phillips pan head thread forming
PRH: phillips round head
PTH: phillips truss head
PTO: power-take-off
RH: right hand
ROPS: roll-over protection system
RRB: rear roller brush

SFH: slotted fillister head
SHH: slotted hex head
SHWH: slotted hex washer head
SPH: slotted pan head
SQH: square head
SRH: slotted round head
STD: standard
TAP: self tapping
TTH: torx truss head

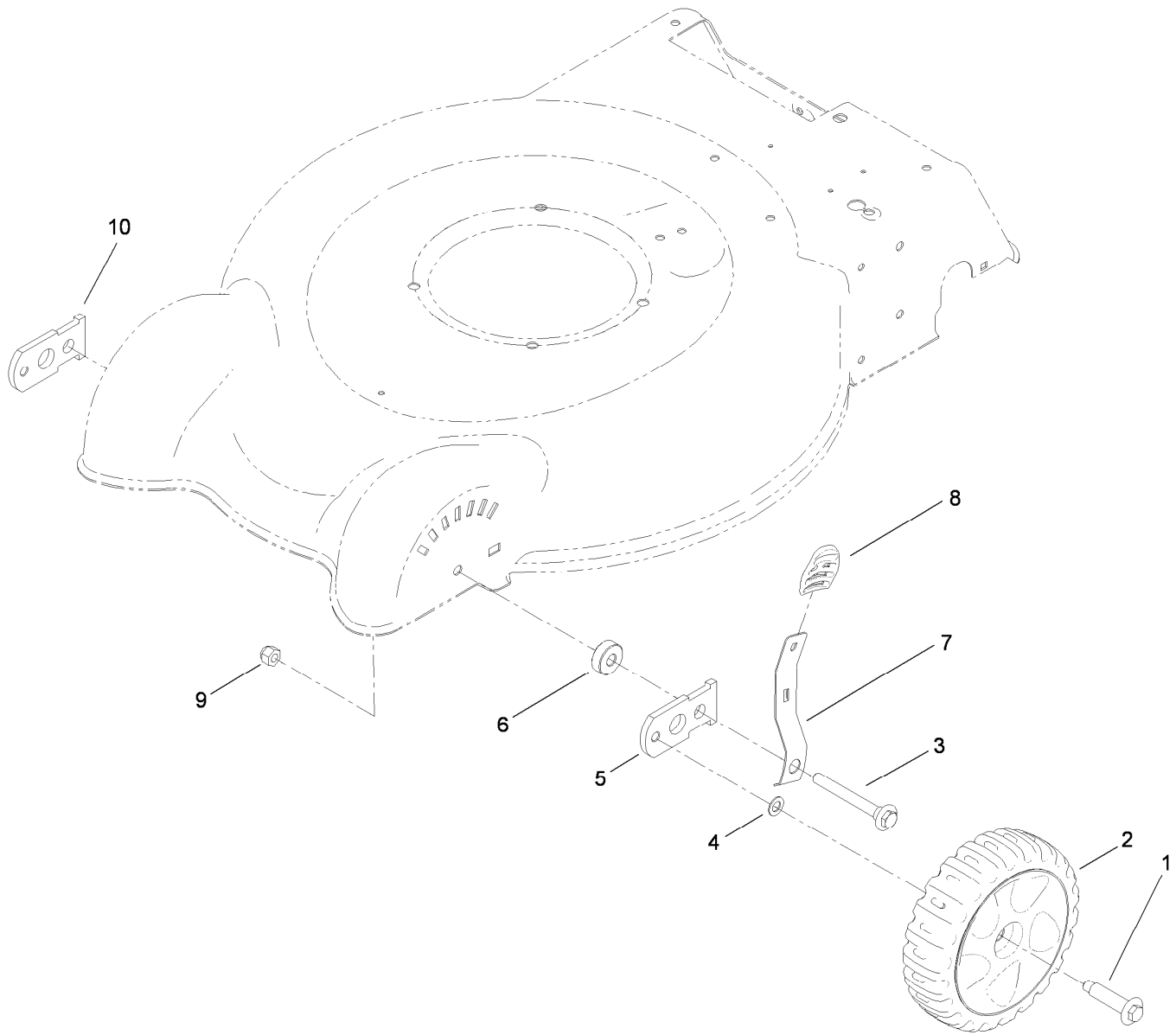
Contents

- Housing and Rear Door Assembly 4
- Front Wheel and Height-of-Cut Assembly 5
- Transmission, Rear Wheel and Height-of-Cut Assembly 6
- Engine and Blade Assembly 7
- Handle Assembly 8
- Battery and Electrical Harness Assembly 9
- Bag and Frame Assembly 10



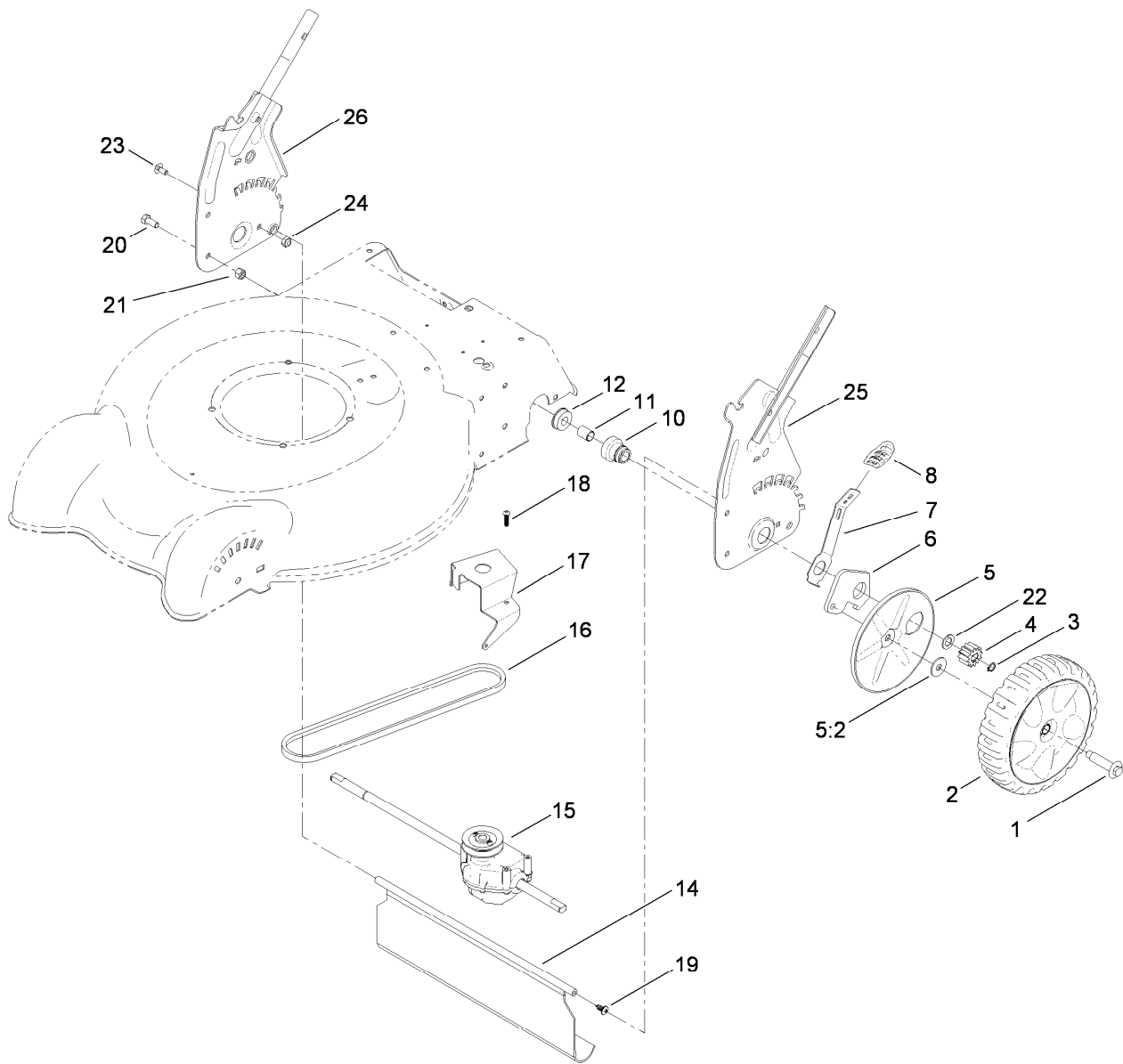
Housing and Rear Door Assembly

Ref.	Part Number	Qty.	Description
1	117-5944	1	Housing ASM
1:2	112-8760	1	Decal-Danger
1:3	117-5947	1	Decal-Deck
2	112-8845	1	Chute-Rear
3	112-8821	1	Baffle-Rear
4	46-8091	5	Screw-HWH
5	117-5971	1	Baffle-Front, Rwd (Ce)
6	117-5923	1	Rear Deflector ASM
6:2	117-4143	1	Decal-Warning, Ce
7	112-8848	1	Spring-Torsion, LH
8	112-8849	1	Spring-Torsion, RH
11	46-8093	3	Screw-Plastite
12	117-5992	2	Spacer-Baffle Front



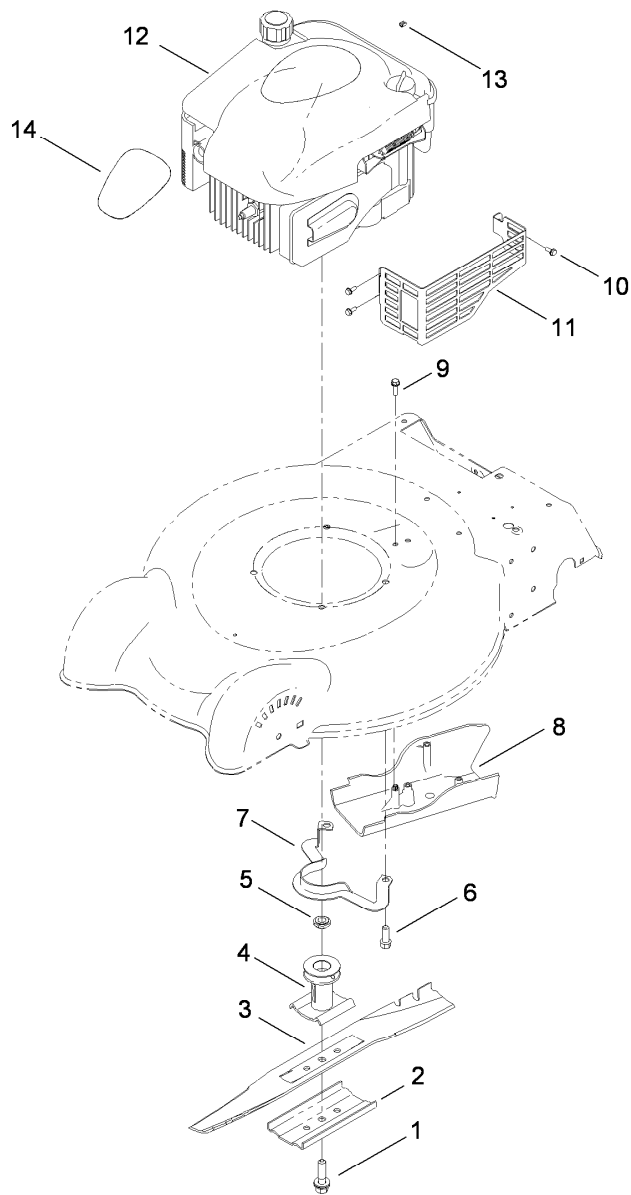
Front Wheel and Height-of-Cut Assembly

Ref.	Part Number	Qty.	Description
1	614650	2	Bolt-Shoulder
2	117-5964	2	7 Inch Wheel And Tire ASM
3	117-5996	2	Bolt-Shoulder
4	40-1940	2	Washer
5	107-3877	1	Arm-Pivot, RH
6	117-5997	2	Spacer-Arm, Pivot
7	112-8828	2	Arm-Spring, Front
8	105-3042	2	Knob-Lever, HOC
9	3296-39	2	Nut-Lock, NI
10	108-1044	1	Arm-Pivot, LH



Transmission, Rear Wheel and Height-of-Cut Assembly

<i>Ref.</i>	<i>Part Number</i>	<i>Qty.</i>	<i>Description</i>	<i>Ref.</i>	<i>Part Number</i>	<i>Qty.</i>	<i>Description</i>
1	614650	2	Bolt-Shoulder	15	112-8831	1	Transmission ASM
2	119-0321	2	8 Inch Wheel Gear ASM	16	110-9429	1	V-Belt
3	32151-61	2	Ring-Retaining	17	114-7977-03	1	Bracket-Transmission
4	115-4668	2	Gear-Pinion, 12T	18	108-7476	3	Screw-Plastite
5	117-4197	2	Wheel Cover ASM	19	117-1092	2	Screw-PTH
5:2	614426	1	Washer-Stepped	20	322-3	4	Screw-HH
6	108-9781	2	Arm-Pivot, Rear	21	3296-29	4	Nut-Lock, NI
7	108-9780	2	Arm-Spring	22	110-7191	2	Washer-Thrust
8	105-3042	2	Knob-Lever, HOC	23	3229-11	2	Screw-CARR
10	108-9779	2	Retainer-Bushing, HOC	24	3296-16	2	Nut-Lock, NI
11	108-9782	2	Bushing-Sleeve	25	119-3804-03	1	HOC-LH
12	104-8699	2	Bearing-Ball	26	119-3805-03	1	HOC-RH
14	112-8768	1	Shield-Trailing				

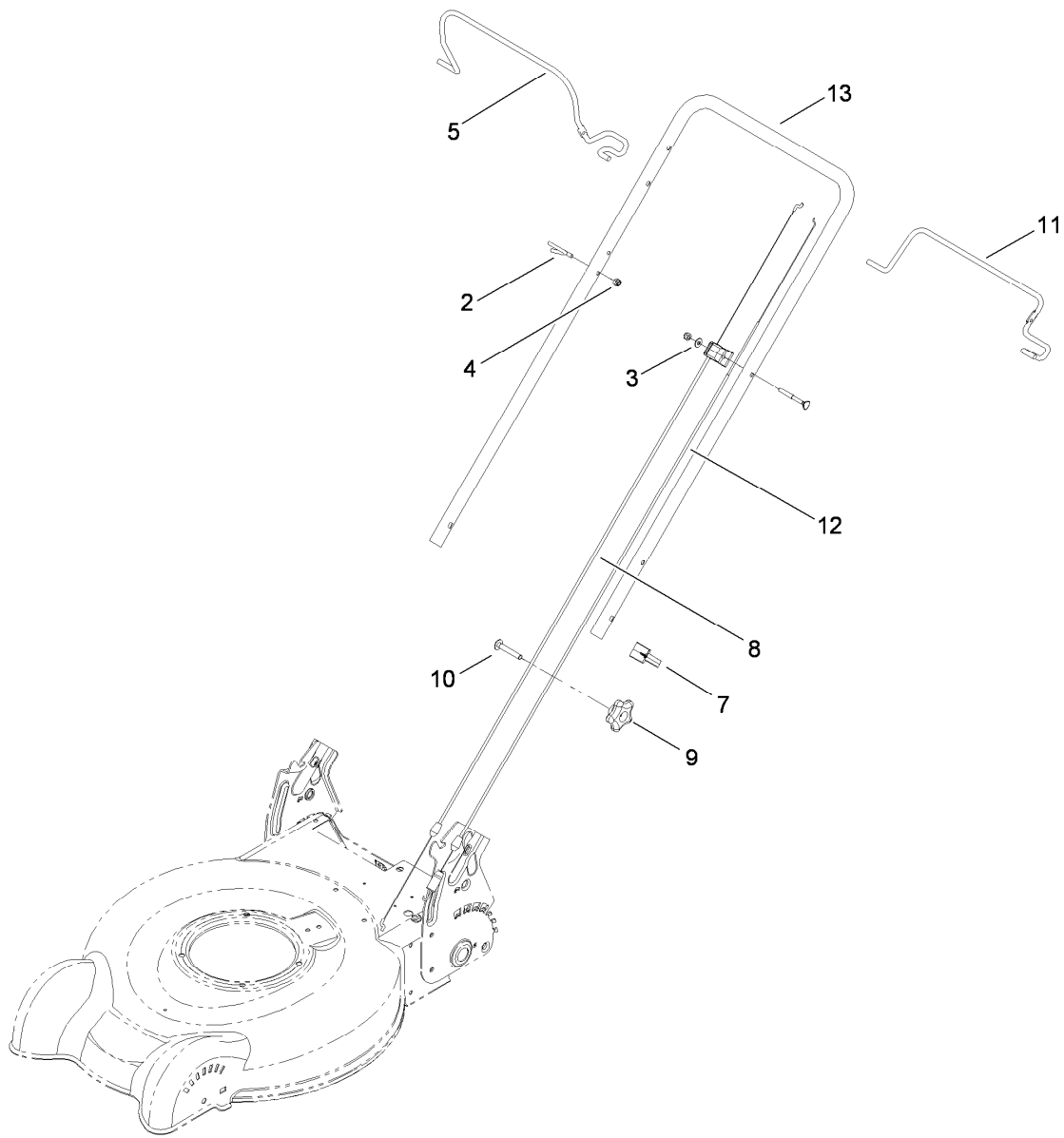


Engine and Blade Assembly

Ref.	Part Number	Qty.	Description
1	105-8579	1	Bolt-Blade
2	108-3766-03	1	Support-Blade
3	112-8841-03	1	Blade-20 Inch
4	106-3987	1	Blade Driver ASM
5	106-3999	1	Spacer-Driver
6	95-1726	3	Screw-Taptite
7	105-3030-03	1	Guide-Belt
8	112-8829	1	Cover-Belt
9	46-8091	3	Screw-HWH
10	32144-1	3	Screw-Taptite
11	104-7577-03	1	Shield-Muffler
12		1	Engine-Briggs, 126T05-0373-B1 ● ■
13	2210-316	1	Stop-Rope
14	117-5917	1	Decal-Engine

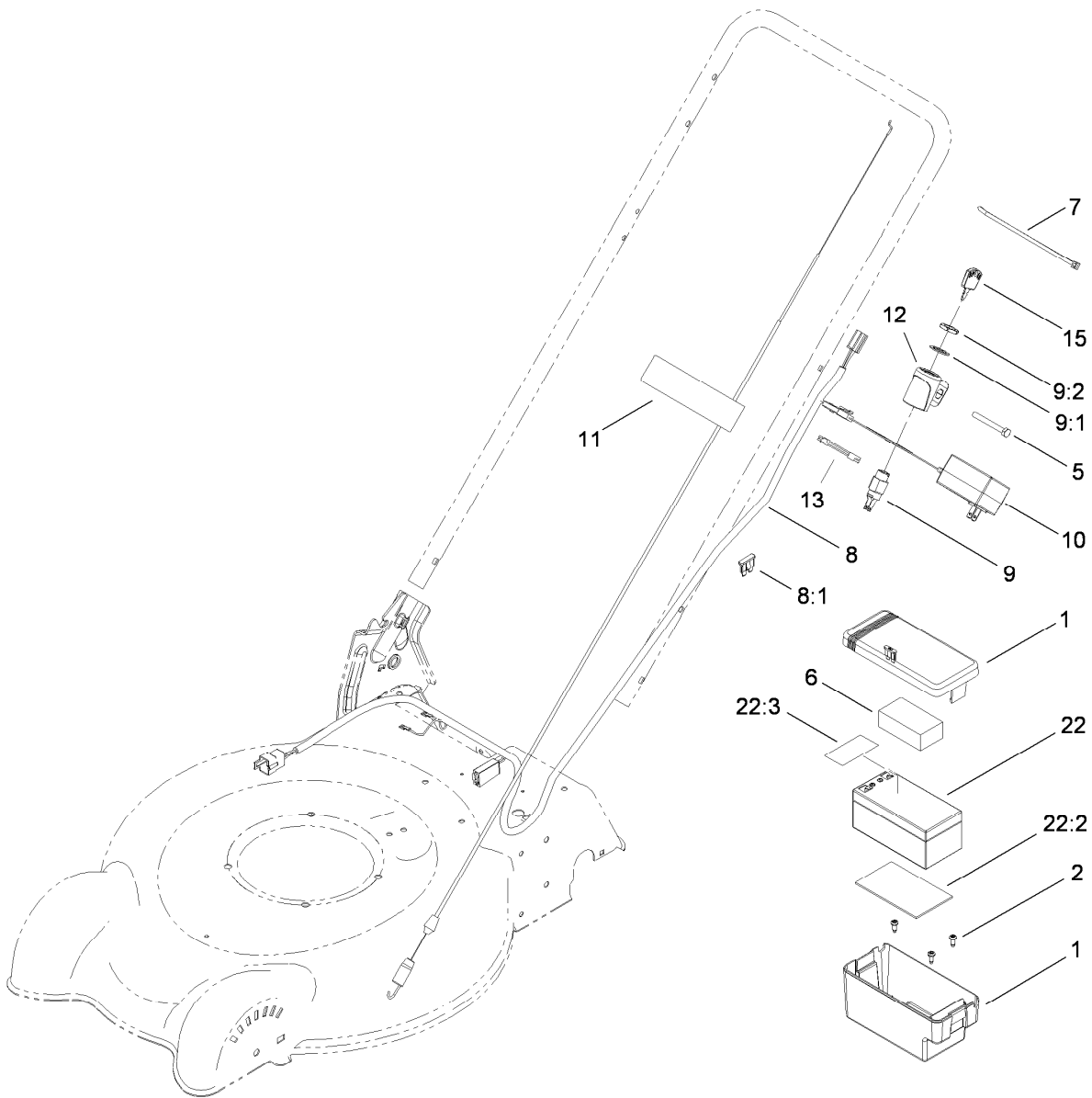
● Not serviced separately

■ Obtain parts from www.briggsandstratton.com



Handle Assembly

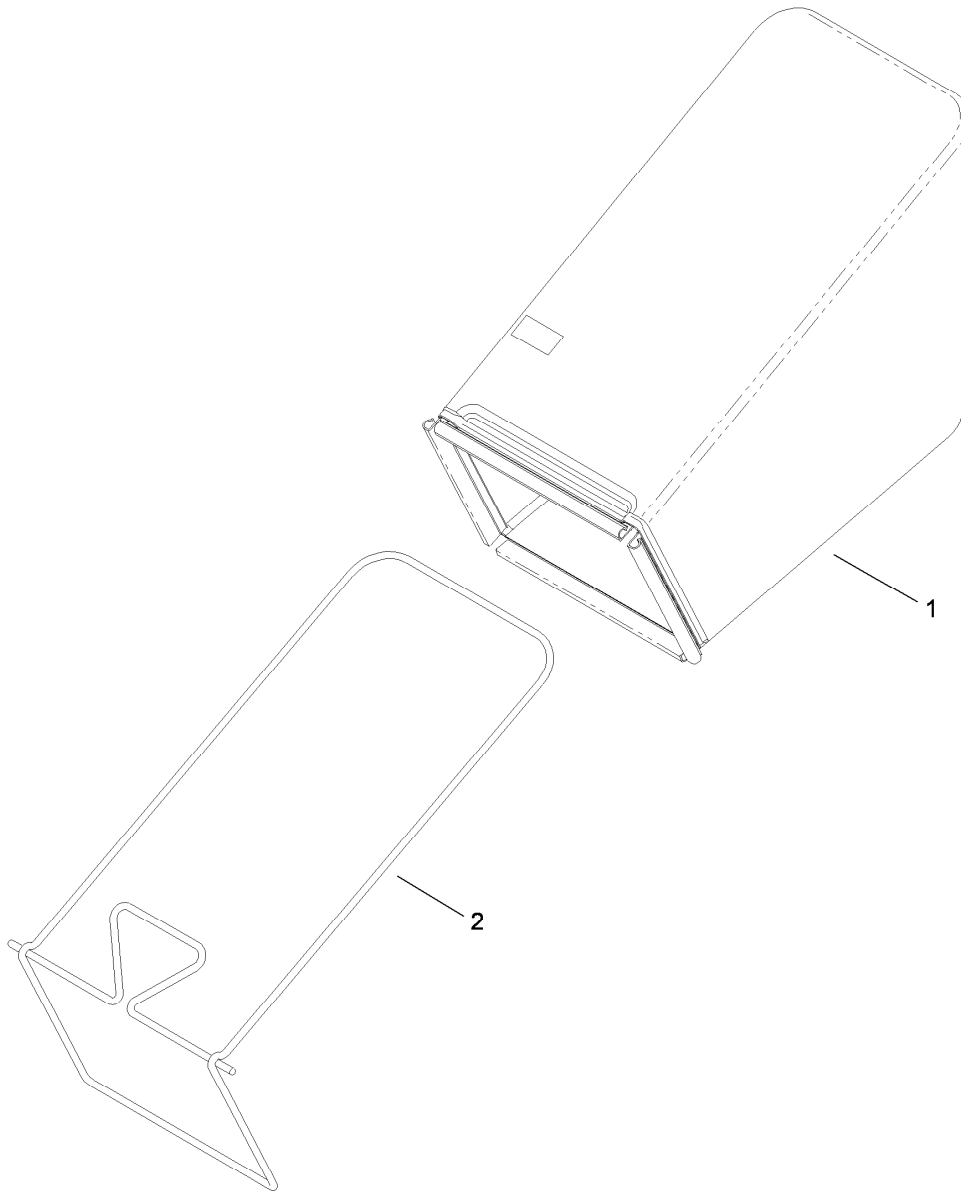
Ref.	Part Number	Qty.	Description
2	86-9671	1	Guide-Rope
3	3256-1	1	Washer-Flat
4	3296-73	2	Nut-Lock, NI
5	112-8834-03	1	Bail-Brake, 2-Bail Flat
7	114-7988	1	Guide-Cable
8	112-8818	1	Cable-Brake
9	117-5976	2	Knob-Handle, Locking
10	3230-6	2	Screw-CARR
11	112-8835-03	1	Bail-Traction, 2-Bail Flat
12	112-8817	1	Cable-Traction
13	119-0308-05	1	Handle-Upper, 20 Inch



Battery and Electrical Harness Assembly

Ref.	Part Number	Qty.	Description
1	108-4844	1	Battery Box ASM
2	105-6849	3	Screw-Thread Forming
5	321-57	1	Screw-HH
6	107-3774	1	Foam-Battery, Top
7	614249	1	Strap-Tie
8	106-8378	1	Harness-Wire
8:1	99-6124	1	Fuse-40 Amp
9	46-5780	1	Starter Switch ASM
9:1	3254-5	1	Washer-Tooth, Internal

Ref.	Part Number	Qty.	Description
9:2	218-461	1	Nut-HH
10	98-2391	1	Charger-European, 12V Dc
11	104-7953	1	Decal-Harness
12	108-9760	1	Mount-Switch
13	107-3749	1	Adapter-Charger
15	700918	1	Key
22	108-9358	1	Battery
22:2	108-0987	1	Foam-Battery
22:3	112-8763	1	Decal-Terminal, Battery



Bag and Frame Assembly

<i>Ref.</i>	<i>Part Number</i>	<i>Qty.</i>	<i>Description</i>
1	119-3759	1	Grass Bag ASM
2	112-8825-03	1	Frame-Bag

Notes:



Count on it.