



Count on it.

Parts Catalog

LX427 Lawn Tractor

Built On or After January 31 2009

**Model No. 13AX61RG848—Serial No. 1A319H10001 and
Up**

Ordering Replacement Parts

To order replacement parts, please supply the part number, the quantity, and the description of each part desired.

Understanding Reference Numbers

Each identified part in an illustration has a reference number. The reference number for a part also appears in the parts list, along with other information about the part.

This catalog uses two special reference number formats, one to indicate parts in a service assembly and another to indicate the quantity of a given part in an illustration.

Service Assembly Reference Numbers

Parts in service assemblies have reference numbers in the form a:b. The a represents the reference number of the entire service assembly and the b represents a sequential number unique to each part within the service assembly.

For example, a wheel assembly might be identified by reference number 6, the tire by 6:1, the valve by 6:2, and the wheel by 6:3. When you order the assembly identified by reference number 6, you receive all parts identified by reference numbers 6:1, 6:2, and 6:3. However, you may also order any part individually. Reference numbers of this type appear in illustration and in parts lists.

Reference Numbers Indicating Quantity

In an illustration, if a reference number indicates more than one part, the reference number has the form nX y. The n represents the quantity of the part, the X is the multiplication symbol, and the y represents the reference number.

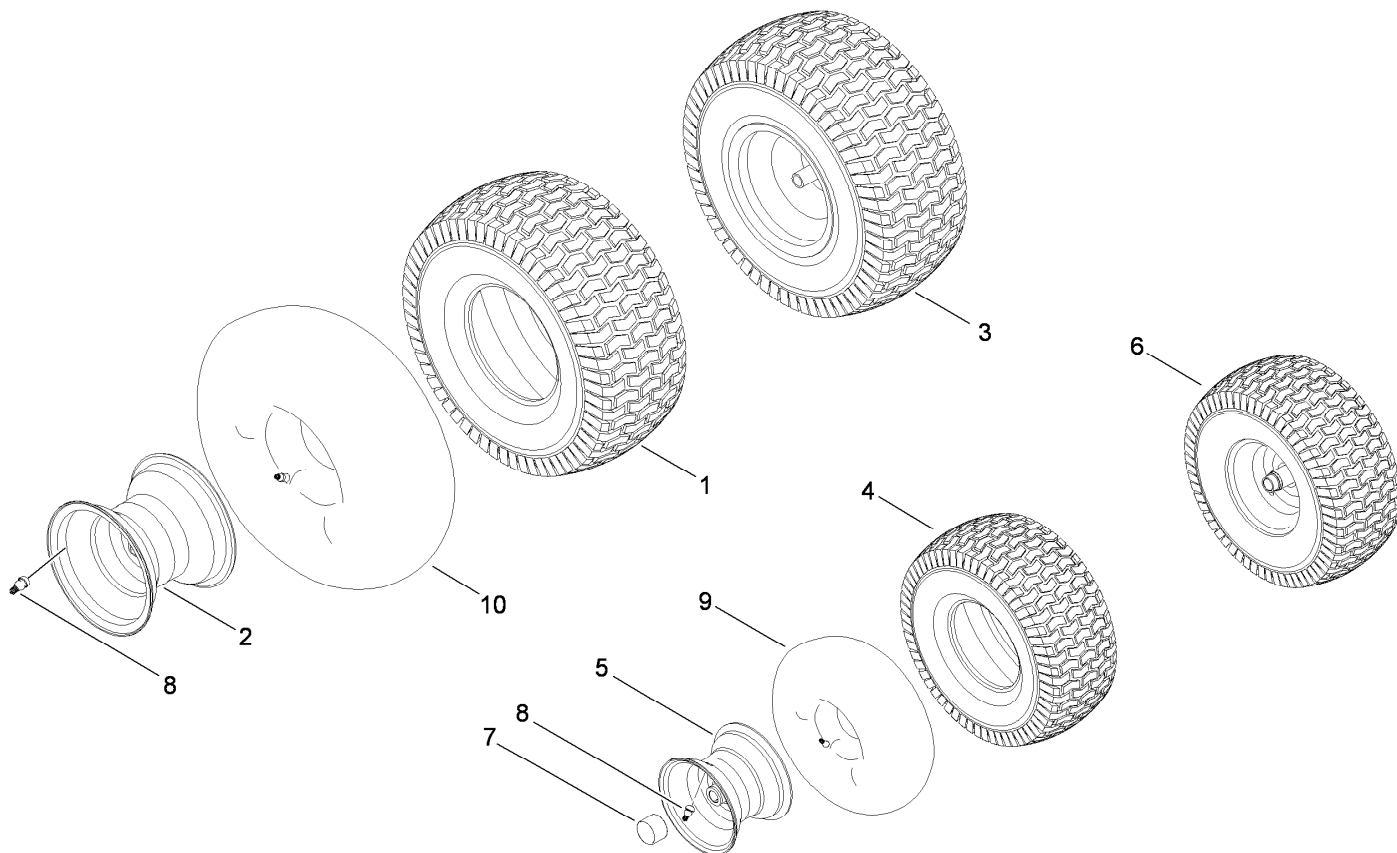
For example, in an illustration, the reference number 2X 37 means that two of the parts identified by reference number 37 are indicated.

List of Abbreviations

AR: as required	HSBH: hex socket button head	SFH: slotted fillister head
ASM: assembly	HSFH: hex socket flat head	SHH: slotted hex head
BBC: blade brake clutch	HSH: hex socket head	SHWH: slotted hex washer head
CARR: carriage	HWH: hex washer head	SPH: slotted pan head
CCW: counter clock wise	HWTF: hex washer head thread forming	SQH: square head
CW: clockwise	HYD: hydraulic	SRH: slotted round head
DEG: degrees	LH: left hand	STD: standard
ECM: electronic control module	NI: nylon insert	TAP: self tapping
EXT: external	NPTF: national pipe thread fine	TTH: torx truss head
FH: flat head	PFH: phillips flat head	
GA: gauge	PPH: phillips pan head	
HD: heavy-duty	PPHTF: phillips pan head thread forming	
HF: hex flange	PRH: phillips round head	
HH: hex head	PTH: phillips truss head	
HHF: hex head flange	PTO: power-take-off	
HHFTF: hex head flange thread forming	RH: right hand	
HJ: hex jam	ROPS: roll-over protection system	
HLH: hex lag head	RRB: rear roller brush	
HOC: height-of-cut		

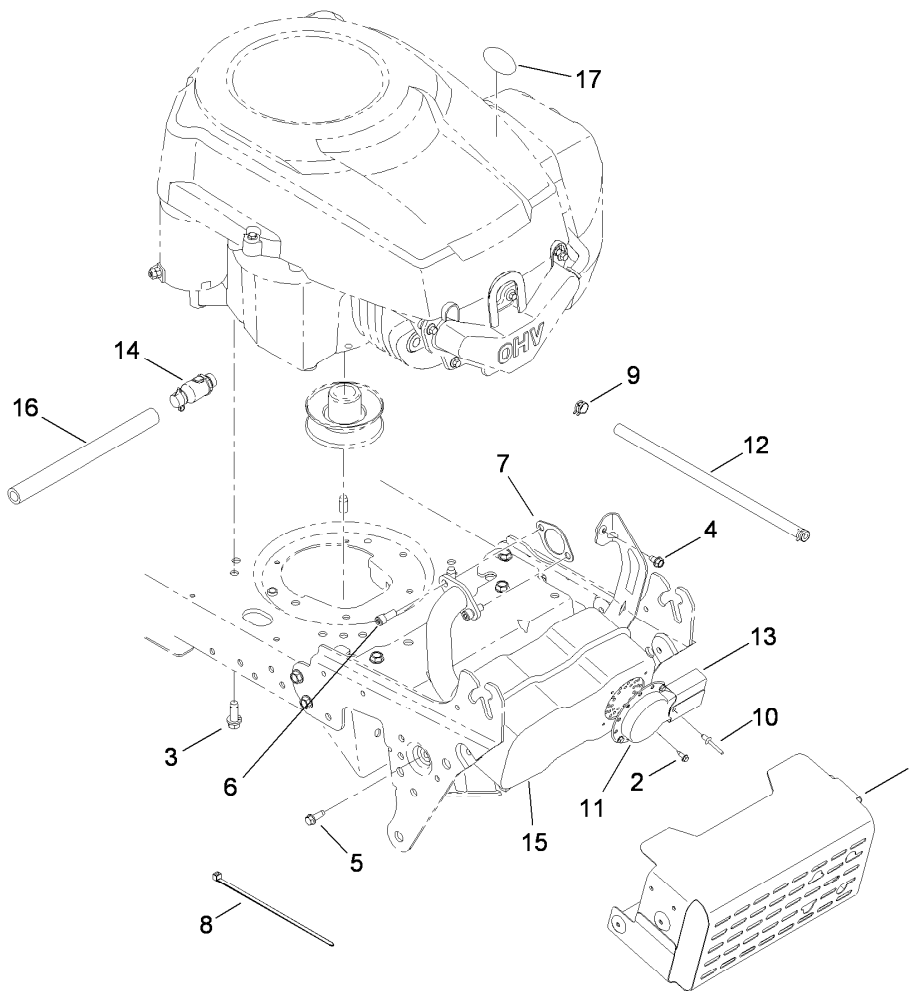
Contents

Front and Rear Wheel Assembly	4
Muffler and Shield Assembly	5
Steering and Front Axle Assembly	6
Frame, Battery and Manual PTO Assembly	8
Seat, Fender and Deck Lift Assembly	10
Fuel Tank, Hood and Dash Assembly	12
Transmission, Belt and Control Pedal Assembly	14
Transmission Assembly No. 112-6019	16
42 Inch Deck Spindle and Belt Drive Assembly	18
Attachments and Accessories	20



Front and Rear Wheel Assembly

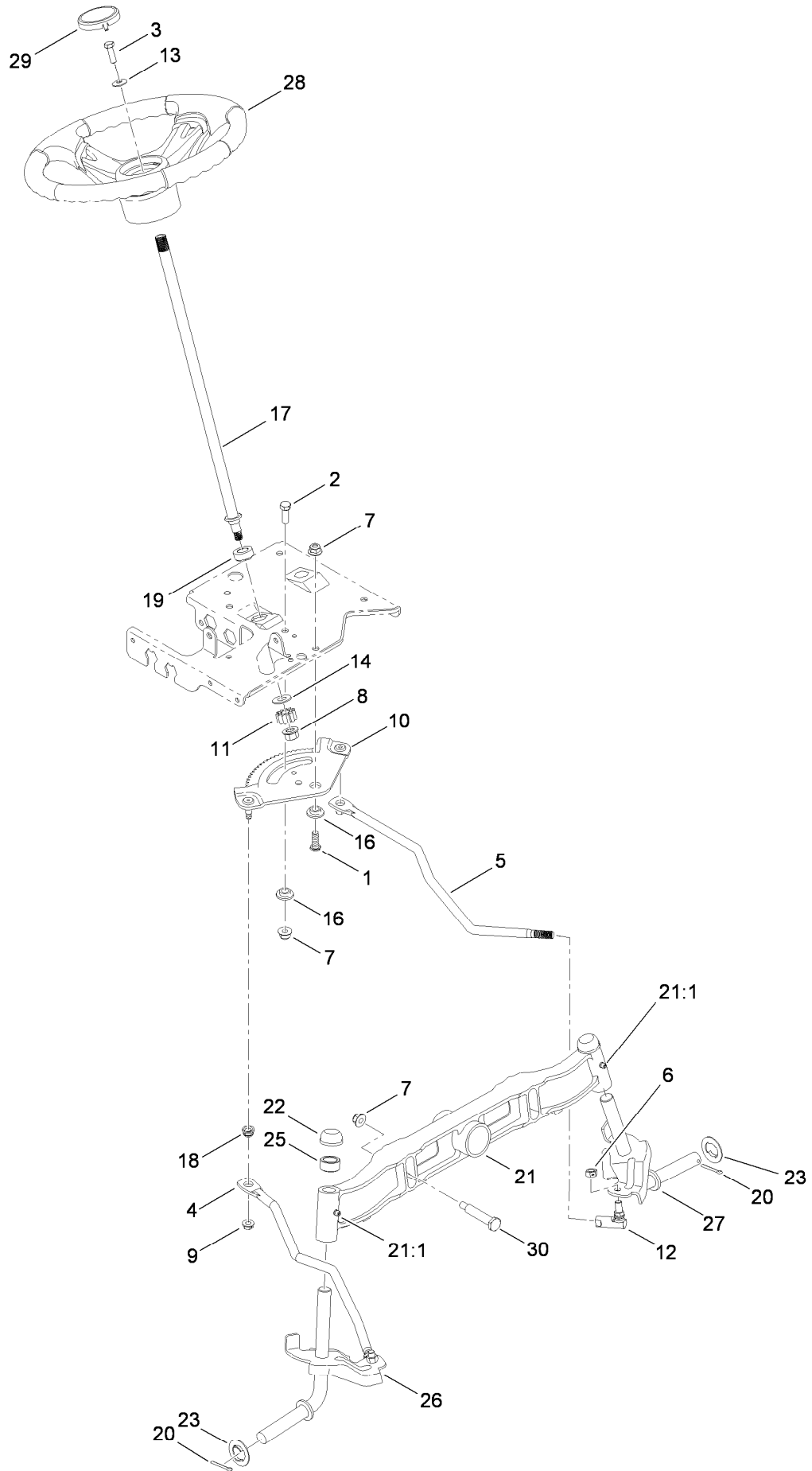
<i>Ref.</i>	<i>Part Number</i>	<i>Qty.</i>	<i>Description</i>
1	112-0713	1	Tire-Multi Trac
2	112-6201	1	Rim-Wheel, Rear
3	112-0496	1	Rear Wheel ASM
4	112-0576	1	Tire-Front
5	112-0468	1	Rim-Wheel, Front
6	112-0491	1	Front Wheel ASM
7	112-5968	1	Cap-Hub
8	112-0503	1	Valve-Air, Tubeless
9	232-39	1	Tube-Inner
10	93-3893	1	Tube-Inner



Muffler and Shield Assembly

<i>Ref.</i>	<i>Part Number</i>	<i>Qty.</i>	<i>Description</i>
1	112-6202	1	Shield-Muffler
2	112-0626	1	Screw-HWHTF
3	112-6163	1	Screw-HH, TAP
4	112-0524	1	Screw-HWHTF
5	112-0587	1	Screw-TAP
6	112-6012	1	Screw-HSH
7	112-6203	1	Gasket-Exhaust
8	112-0527	1	Tie-Cable
9	112-0573	1	Clamp-Hose
10	112-3741	1	Rivet-Pop
11	112-0453	1	Deflector-Muffler
12	112-0720	1	Hose-Fuel
13	112-0730	1	Deflector-Muffler, Long
14	112-6094	1	Drain-Oil
15	112-6204	1	Muffler-Single, Kohler
16	112-0553	1	Hose-Drain
17	112-5960	1	Decal-Check Oil

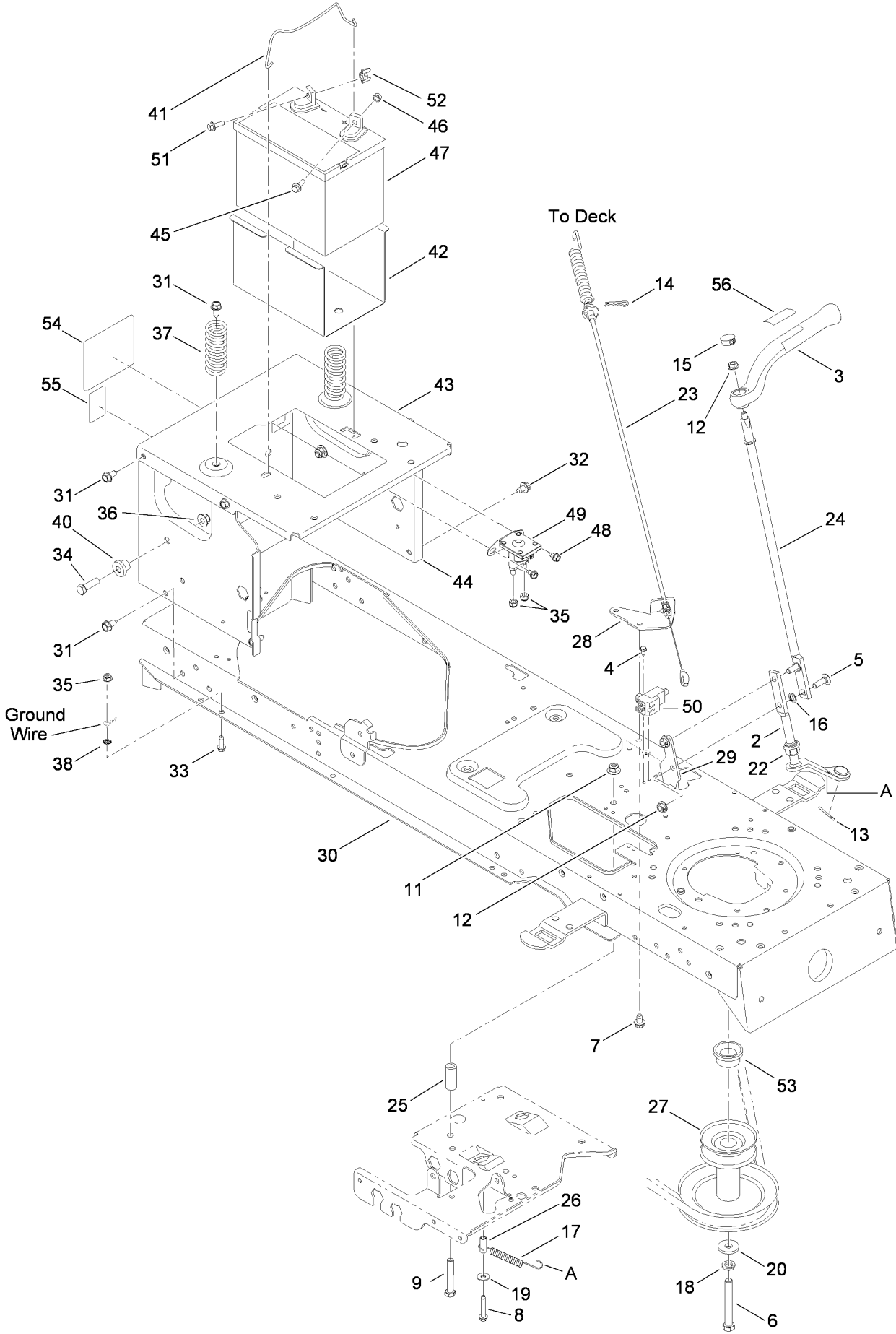
Steering and Front Axle Assembly



Steering and Front Axle Assembly (continued)

<i>Ref.</i>	<i>Part Number</i>	<i>Qty.</i>	<i>Description</i>	<i>Ref.</i>	<i>Part Number</i>	<i>Qty.</i>	<i>Description</i>
1	112-0631	1	Screw-HH	17	112-6097	1	Shaft-Steering
2	112-0492	1	Screw-HH	18	112-0929	1	Bushing
3	112-0473	1	Screw-HH	19	112-6257	1	Bearing-Flange, Hex
4	112-0355	1	Link-Drag, RH	20	112-0860	1	Pin-Cotter
5	112-0346	1	Link-Drag, LH	21	112-6099	1	Pivot-Axle, Cast Iron
6	112-0483	1	Nut-Hex, Lock	21:1	112-0926	1	Fitting-Grease
7	112-0668	1	Nut-Lock, Flange	22	112-0323	1	Cap
8	112-0859	1	Nut-Lock, Flange	23	112-6258	1	Washer-Flat
9	112-0511	1	Nut-Lock, Flange	25	112-6136	1	Spacer
10	112-0862	1	Gear-Steering	26	112-6015	1	RH Axle ASM
11	112-0863	1	Gear-Pinion, Steering	27	112-6016	1	LH Axle ASM
12	112-0917	1	Ball Joint ASM	28	112-6100	1	3 Spoke Wheel Steering ASM
13	112-0924	1	Washer-Flat	29	112-3734	1	Cap-Wheel, Steering
14	112-0925	1	Washer-Flat	30	112-0699	1	Bolt-Shoulder
16	112-0881	1	Spacer-Shoulder				

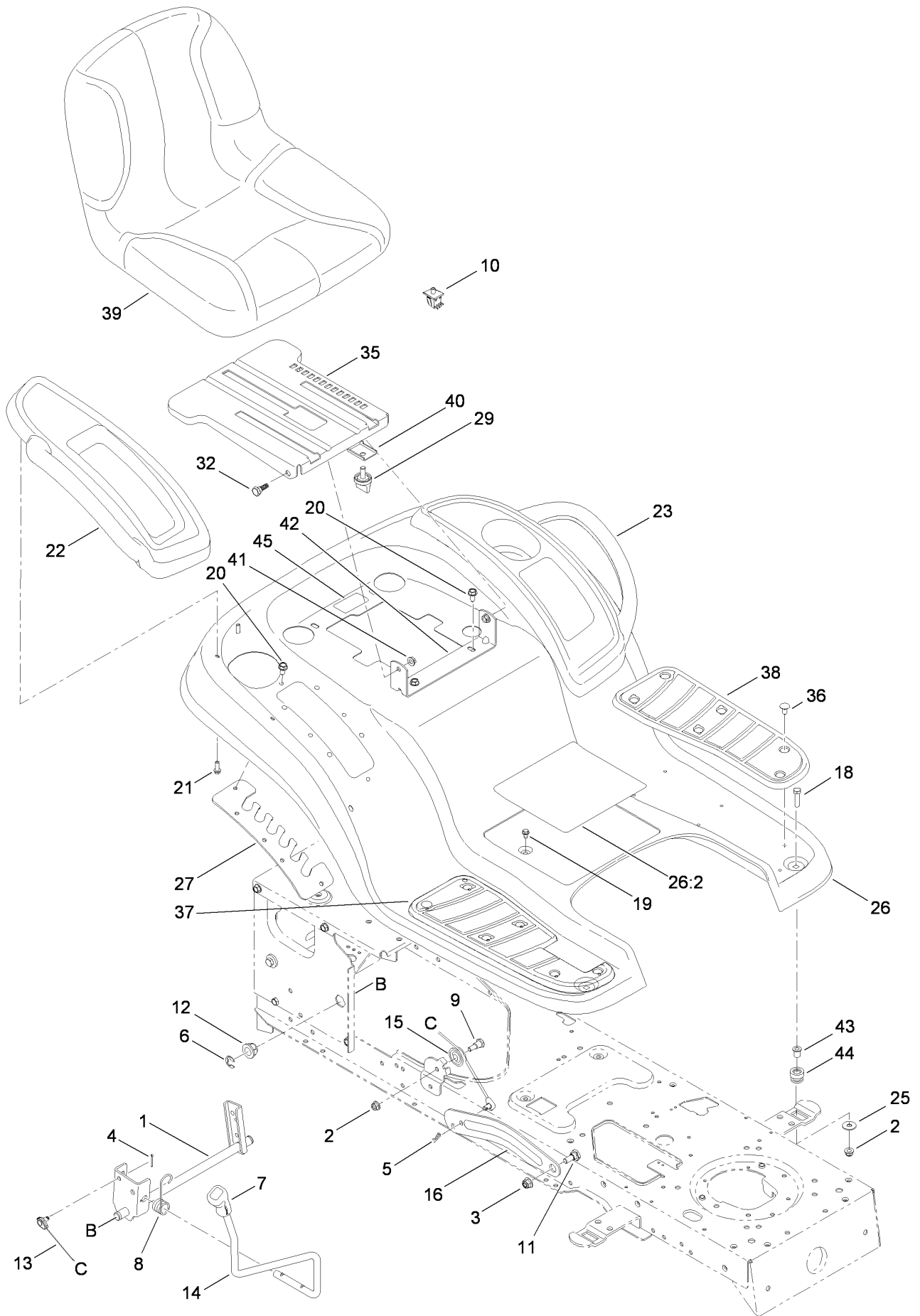
Frame, Battery and Manual PTO Assembly



Frame, Battery and Manual PTO Assembly (continued)

<i>Ref.</i>	<i>Part Number</i>	<i>Qty.</i>	<i>Description</i>	<i>Ref.</i>	<i>Part Number</i>	<i>Qty.</i>	<i>Description</i>
2	112-6007	1	Lever-Engage, PTO	31	112-6070	1	Screw-TAP
3	112-6101	1	Knob PTO ASM	32	112-0676	1	Screw-TAP
4	112-6206	1	Bolt-Shoulder	33	112-0587	1	Screw-TAP
5	112-0598	1	Bolt-CARR	34	112-0557	1	Screw-HH
6	112-6008	1	Screw-HH	35	112-0636	1	Nut-Lock, Flange
7	112-0676	1	Screw-TAP	36	112-0668	1	Nut-Lock, Flange
8	112-0843	1	Screw-HWH	37	112-6208	1	Spring-Compression
9	112-6009	1	Screw-HH	38	112-0703	1	Washer-Lock, External
11	112-0668	1	Nut-Lock, Flange	40	112-0661	1	Spacer-Shoulder
12	112-0511	1	Nut-Lock, Flange	41	112-0581	1	Rod-Holddown, Battery
13	112-6010	1	Pin-Cotter	42	112-0570	1	Tray-Battery
14	112-0398	1	Pin-Click	43	112-6209	1	Bracket-Frame, Seat
15	112-6103	1	Plug-Knob, PTO Lever	44	112-6254	1	Frame-Upper
16	112-0645	1	Nut-Push	45	112-1070	1	Bolt-Carriage
17	112-0567	1	Spring-Extension	46	112-0546	1	Nut-Sems
18	112-0428	1	Washer-Lock	47	112-0425	1	Battery-245, Cca (Dry Flat Top)
19	112-5989	1	Washer-Flat	48	112-6108	1	Screw-TAP
20	112-0380	1	Washer-Flat	49	112-6073	1	Solenoid-12V, 2 Post 2 Tab
22	112-0384	1	Bearing-Flange, Hex (Split)	50	112-6210	1	Switch-Interlock, No/Nc
23	112-6137	1	Cable-Engage, Deck	51	112-6182	1	Bolt-Shoulder
24	112-6104	1	Rod-Engage, Deck	52	112-1121	1	Nut-Wing
25	112-0433	1	Spacer	53	112-6211	1	Spacer
26	112-0644	1	Spacer	54	112-1284	1	Decal (Toro)
27	112-6207	1	Pulley-Engine	55	112-6289	1	Decal-Hydro Release
28	112-6105	1	Bracket-Mount, Cable	56	112-6286	1	Decal-PTO
29	112-0516	1	Bracket-Stop				
30	112-5974	1	Lower Frame ASM				

Seat, Fender and Deck Lift Assembly

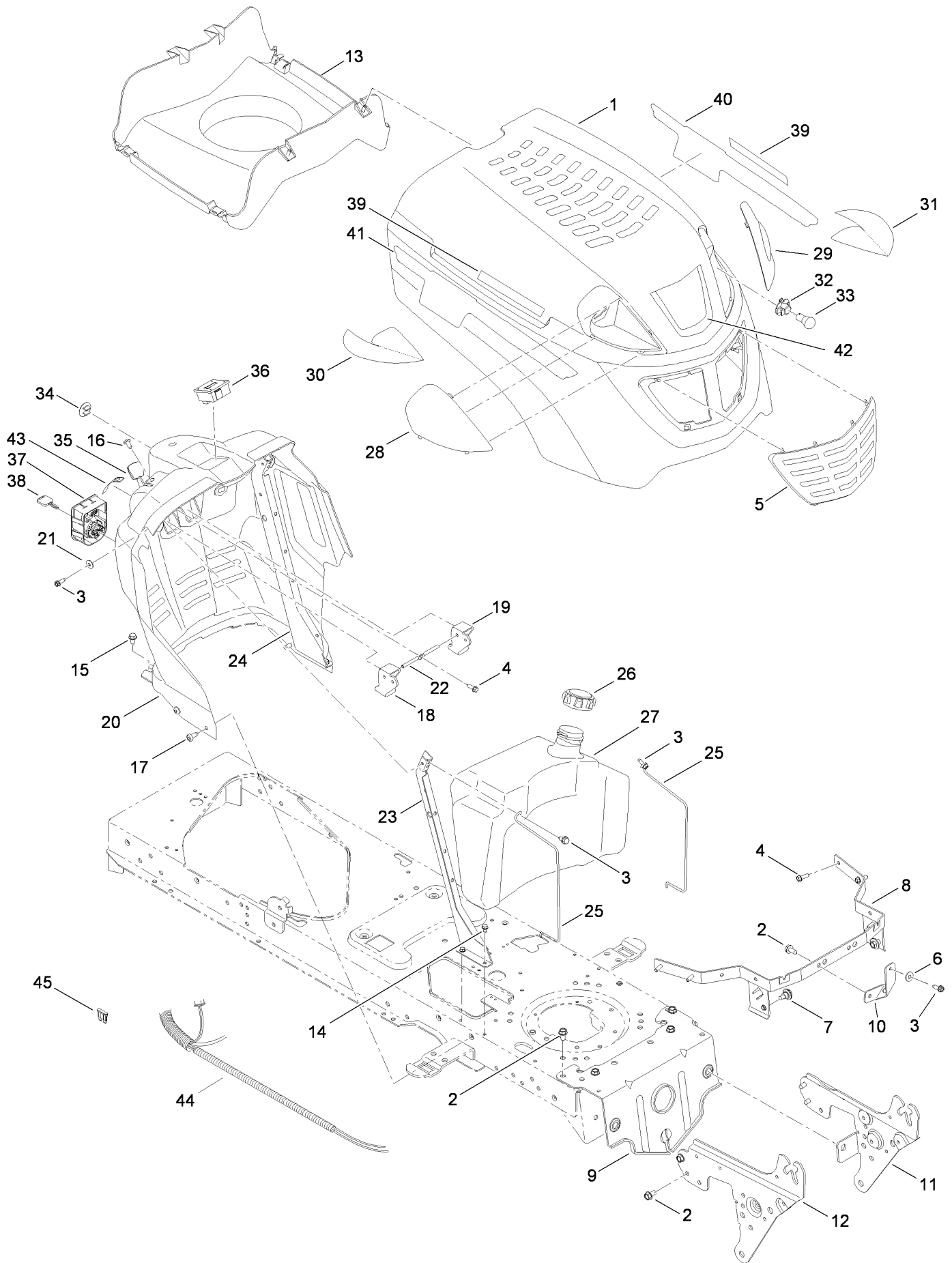


Seat, Fender and Deck Lift Assembly (continued)

<i>Ref.</i>	<i>Part Number</i>	<i>Qty.</i>	<i>Description</i>	<i>Ref.</i>	<i>Part Number</i>	<i>Qty.</i>	<i>Description</i>
1	112-5969	1	Lift Shaft ASM	22	112-6212	1	Cover-Fender, RH
2	112-0650	1	Nut-Lock, Flange	23	112-6065	1	Cover-Fender, LH (W/Cupholder)
3	112-0668	1	Nut-Lock, Flange	25	112-0582	1	Washer-Flat
4	112-0459	1	Pin-Cotter	26	112-6294	1	Fender With Decal
5	112-0568	1	Pin-Cotter	26:2	112-6290	1	Decal-Safety
6	112-0586	1	Ring-E	27	112-0629	1	Bracket-Adjusting, Lift
7	112-0585	1	Grip-Handle	29	112-0409	1	Knob
8	112-0477	1	Spring-Torsion	32	112-0575	1	Bolt-Shoulder
9	112-0443	1	Bolt-Shoulder	35	112-6214	1	Bracket-Mount, Seat
10	110-9889	1	Switch-Seat	36	112-0549	1	Clip-Ratchet, Fastener
11	112-0669	1	Bolt-Shoulder	37	112-0540	1	Pad-Foot, RH
12	112-0347	1	Bearing-Flange	38	112-0545	1	Pad-Foot, LH
13	112-0374	1	Cable-Lift	39	112-6215	1	Seat-High
14	112-5970	1	Handle-Lift	40	112-6216	1	Bracket-Knob, Adjustment
15	112-0502	1	Pulley-Roller	41	112-0511	1	Nut-Lock, Flange
16	112-6259	1	Arm-Lift, RH	42	112-6217	1	Bracket-Pivot, Seat
17	112-6260	1	Arm-Lift, LH ●	43	112-3733	1	Spacer
18	112-0373	1	Screw-HH	44	112-3732	1	Grommet
19	112-0524	1	Screw-HWHTF	45	112-6282	1	Decal-Toro Hotline
20	112-6070	1	Screw-TAP				
21	112-0509	1	Screw-TAP				

● Not illustrated

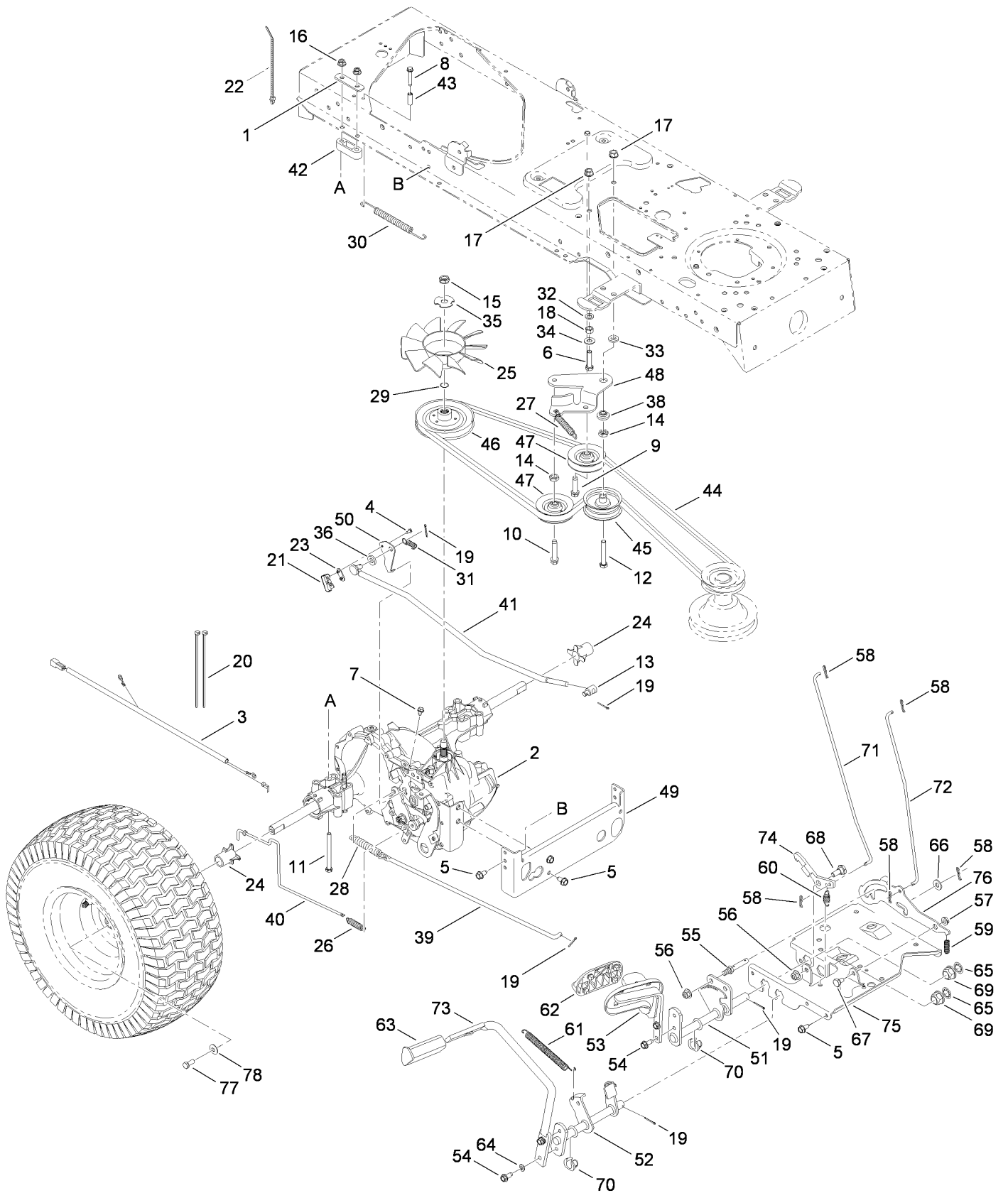
Fuel Tank, Hood and Dash Assembly



Fuel Tank, Hood and Dash Assembly (continued)

<i>Ref.</i>	<i>Part Number</i>	<i>Qty.</i>	<i>Description</i>	<i>Ref.</i>	<i>Part Number</i>	<i>Qty.</i>	<i>Description</i>
1	112-0444	1	Hood	24	112-6263	1	Support-Dash, Plate (LH)
2	112-6070	1	Screw-TAP	25	112-0678	1	Rod-Support
3	112-0587	1	Screw-TAP	26	112-6264	1	Cap-Fuel
4	112-0509	1	Screw-TAP	27	112-6119	1	Tank-Fuel, 3 Gal
5	112-0381	1	Grill	28	112-0447	1	Lens-RH
6	112-5989	1	Washer-Flat	29	112-0446	1	Lens-LH
7	112-6128	1	Bolt-Shoulder, TAP	30	112-5810	1	Reflector-RH
8	112-5985	1	Bracket-Pivot	31	112-5811	1	Reflector-LH
9	112-6127	1	Bracket-Pivot	32	112-0408	1	Socket-Headlight
10	112-5986	1	Bracket-Support, Hood	33	112-0402	1	Lamp-12V, Miniature
11	112-6218	1	Bracket-Support, Pivot (LH)	34	112-0535	1	Plug-Choke
12	112-6219	1	Bracket-Support, Pivot (RH)	35	112-6265	1	Cbl:throttle
13	112-6124	1	Plenium-Hood	36	112-6117	1	Meter-Hour
14	112-0524	1	Screw-HWHTF	37	112-6116	1	Module-Switch, Ignition
15	112-0676	1	Screw-TAP	38	112-6115	1	Key-Ignition
16	112-0550	1	Screw-TAP	39	112-6288	2	Decal
17	112-0563	1	Screw-TAP	40	112-5952	1	Decal-Hood, Left Side
18	112-0526	1	Lever-Cruise	41	112-5953	1	Decal-Hood, Right Side
19	112-0580	1	Lever-Brake	42	112-3716	1	Decal-Hood
20	112-6123	1	Dash-Manual, PTO	43	112-6283	1	Decal-Throttle
21	112-0485	1	Washer-Spring	44	112-6295	1	Harness-Wiring
22	112-0604	1	Rod-Lever, Bent	45	112-5943	1	Fuse-20 Amp
23	112-6262	1	Support-Dash, Plate (RH)				

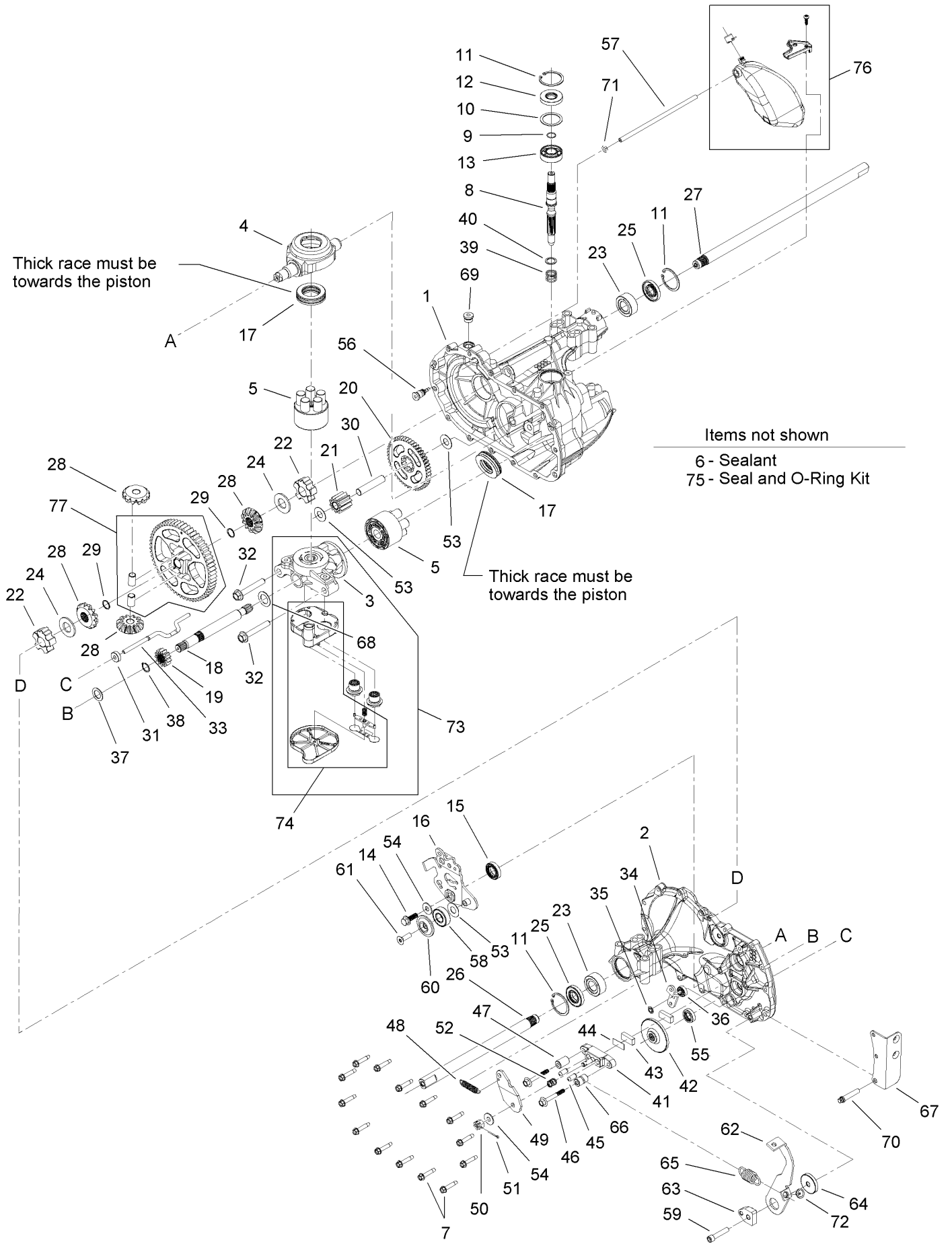
Transmission, Belt and Control Pedal Assembly



Transmission, Belt and Control Pedal Assembly (continued)

<i>Ref.</i>	<i>Part Number</i>	<i>Qty.</i>	<i>Description</i>	<i>Ref.</i>	<i>Part Number</i>	<i>Qty.</i>	<i>Description</i>
1	112-0628	1	Bracket-Mounting, Transmission	40	112-6031	1	Rod-Hydro
2	112-6019	1	Hydro Transmission ASM	41	112-6032	1	Rod-Control
3	112-0620	1	Bracket-Pivot, Support	42	112-0673	1	Spacer-Transaxle
4	112-6026	1	Fan-Blade, 10	43	112-0644	1	Spacer
5	112-6070	1	Screw-TAP	44	112-6147	1	Belt-V
6	112-0578	1	Screw-HH	45	112-0313	1	Pulley-Idler, Flat
7	112-6022	1	Screw-TAP	46	112-6148	1	Pulley-Input
8	112-0843	1	Screw-HWH	47	112-6149	1	Pulley-Idler, Y Type
9	112-0469	1	Screw-TAP	48	112-0525	1	Bracket-Idler, Center Double
10	112-6143	1	Screw-TAP	49	112-6034	1	Bracket-Torq, Transmission
11	112-0667	1	Screw-HH	50	112-6035	1	Bracket-Actuator
12	112-6009	1	Screw-HH	51	112-0850	1	Control ASM
13	112-0908	1	Ferrule	52	112-5998	1	Speed Control ASM
14	112-0493	1	Nut-Jam	53	112-0851	1	Control Pedal ASM
15	112-6144	1	Nut-Jam	54	112-0395	1	Screw-HWH
16	112-0650	1	Nut-Lock, Flange	55	112-0599	1	Pin
17	112-0385	1	Nut-Lock, Flange	56	112-0668	1	Nut-Lock, Flange
18	112-0668	1	Nut-Lock, Flange	57	112-0511	1	Nut-Lock, Flange
19	112-0568	1	Pin-Cotter	58	112-0459	1	Pin-Cotter
20	112-0527	1	Tie-Cable	59	112-0506	1	Spring
21	112-0602	1	Switch-Spring, Short	60	112-0510	1	Spring-Extension
22	112-0866	1	Tie-Cable	61	112-0348	1	Spring-Extension
23	112-0625	1	Plate-Insulator	62	112-0543	1	Pad-Pedal
24	112-6025	1	Sleeve	63	112-6001	1	Pad-Brake
25	112-6145	1	Fan	64	112-0366	1	Washer-Lock
26	112-6027	1	Spring-Extension	65	112-0339	1	Washer-Flat
27	112-0873	1	Spring-Extension	66	112-0541	1	Washer-Flat
28	112-0350	1	Spring-Extension	67	112-0542	1	Bolt-Shoulder
29	112-6028	1	Ring-Wire	68	112-0442	1	Bolt-Shoulder
30	112-6029	1	Spring-Extension	69	112-0347	1	Bearing-Flange
31	112-0875	1	Spring-Extension	70	112-0387	1	Bearing-Flange, Hex (Split)
32	112-0415	1	Washer-Lock	71	112-6150	1	Rod-Brake, Lock
33	112-0920	1	Washer-Flat	72	112-0662	1	Rod-Control, Cruise
34	112-0572	1	Washer-Flat	73	112-6005	1	Pedal-Brake
35	112-6146	1	Washer-Lock	74	112-6004	1	Latch-Cruise
36	112-0544	1	Washer-Flat	75	112-0681	1	Bracket-Support, Steering
38	112-0345	1	Spacer-Shoulder	76	112-5812	1	Bracket-Lockout
39	112-6030	1	Rod-Brake	77	112-0551	1	Screw-HH
				78	112-0435	1	Washer-Bell

Transmission Assembly No. 112-6019

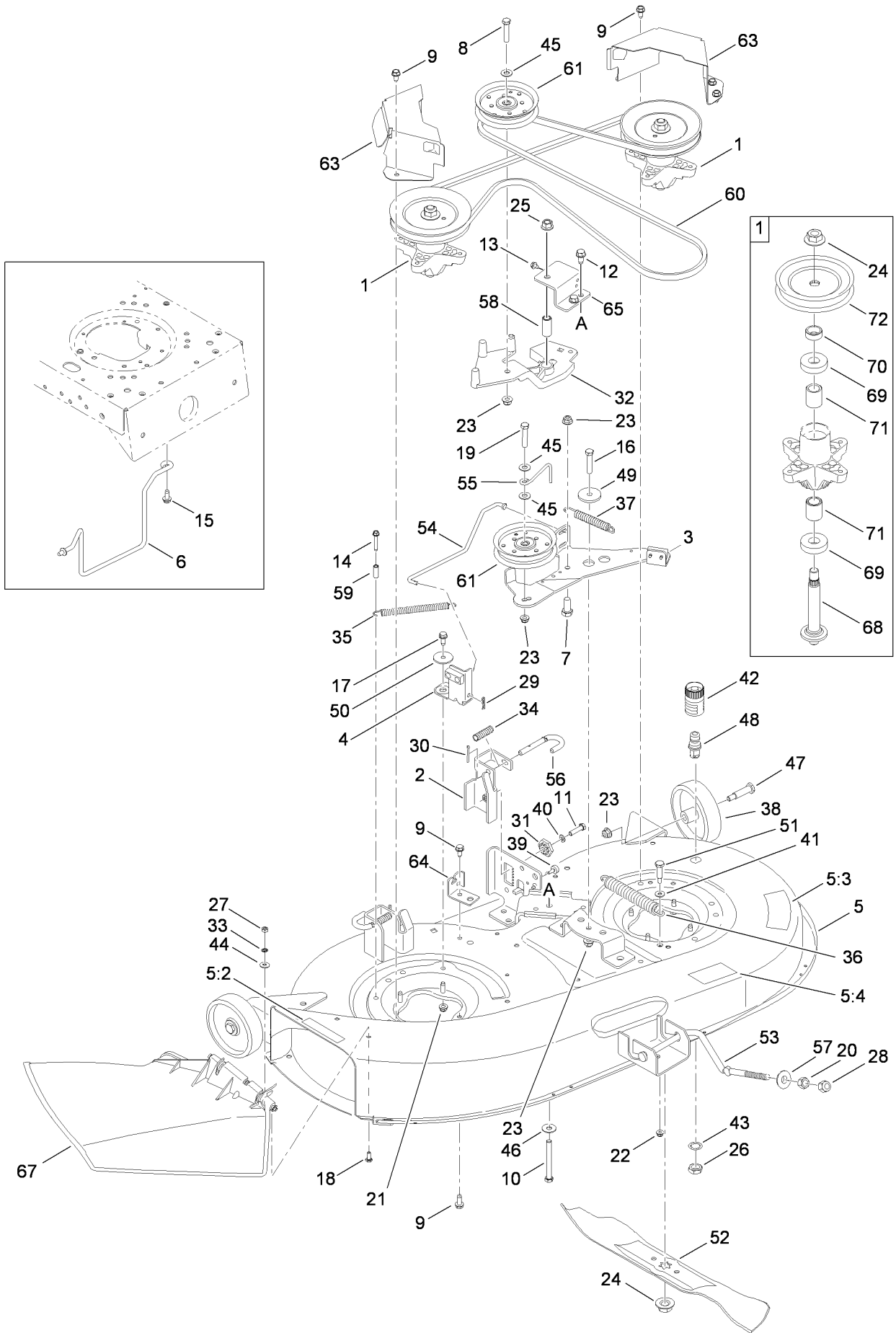


Transmission Assembly No. 112-6019 (continued)

<i>Ref.</i>	<i>Part Number</i>	<i>Qty.</i>	<i>Description</i>	<i>Ref.</i>	<i>Part Number</i>	<i>Qty.</i>	<i>Description</i>
1	104-5301	1	Main Housing ASM	41	104-5343	1	Yoke-Brake
2	104-5302	1	Side Housing ASM	42	104-5344	1	Rotor-Brake
3	104-5303	1	Center Section ASM	43	104-2171	2	Puck-Brake
4	104-5304	1	Swashplate-Trunnion	44	104-2181	1	Puck-Plate
5	103-2666	2	Cylinder Block Kit	45	104-2176	2	Pin-Brake
6	104-2147	1	Sealant ●	46	104-5345	2	Screw-HF
7	104-5305	14	Screw-HHF	47	104-2180	1	Spacer
8	104-5306	1	Shaft-Input	48	112-6194	1	Spring Kit
9	104-5307	1	Ring-Retaining	49	112-6195	1	Brake-Arm
10	104-5308	1	Spacer	50	93-3807	1	Nut-Castle
11	104-5309	3	Ring-Retaining	51	3272-7	1	Pin-Cotter
12	104-5310	1	Seal-Lip	52	104-2188	1	Spring-Brake, Anti Drag
13	104-5311	1	Bearing-Ball	53	94-1933	3	Washer
14	104-5312	1	Screw-HF	54	5-4460	2	Washer-Pivot
15	104-5313	1	Seal-Lip	55	104-5347	1	Seal-Oil
16	112-6190	1	Control-Arm	56	104-5349	1	Fitting-Sae
17	94-6922	2	Bearing-Thrust	57	104-5350	1	Hose-Expansion, Tank
18	104-5315	1	Shaft-Motor	58	104-2156	1	Bearing
19	104-5316	1	Gear-Pinnion, 13T	59	104-2155	1	Screw
20	104-5317	1	Gear	60	104-2157	1	Spacer-Locating
21	104-5318	1	Gear-Jackshaft, 10T	61	104-2158	1	Screw-Countersunk
22	104-5320	2	Bearing-Sleeve	62	112-6196	1	Return-Arm
23	104-5321	2	Bearing-Sleeve, Outboard	63	104-2119	1	Puck-Adjusting
24	94-1943	2	Washer	64	112-6197	1	Washer-Flat
25	104-5322	2	Seal-Lip	65	104-5356	1	Spring-Extension
26	112-6191	1	Axle-Shaft	66	104-5357	1	Spacer
27	112-6192	1	Axle-Shaft	67	112-6198	1	Bracket-Torque
28	112-6193	1	Miter Gear Kit	68	104-5360	1	Washer-Shaft, Motor
29	104-5328	2	Ring-Retaining, Spiral	69	104-2189	1	Plug-Thread, Straight
30	104-5329	1	Pin-Jackshaft	70	104-2148	1	Screw-TTH
31	104-5330	1	Magnet-Ring	71	104-5361	1	O-Ring
32	94-6926	2	Bolt	72	104-5363	1	Guide-Spring
33	104-5335	1	Rod-Actuator, Bypass	73	106-6522	1	Center Section Filter Bypass ASM
34	104-5336	1	Arm-Bypass	74	106-6523	1	Filter ASM
35	104-5337	1	Ring-Retaining	75	104-5368	1	Seal Kit ●
36	104-5338	1	Seal-Lip	76	104-5369	1	Expansion Tank Kit
37	104-5339	1	Washer-Flat	77	112-6199	1	60T Bull Gear Differential Kit (W/Pins)
38	104-5340	1	Ring-Retaining				
39	94-1936	1	Spring-Block				
40	94-1937	1	Washer-Thrust, Block				

● Not illustrated

42 Inch Deck Spindle and Belt Drive Assembly



42 Inch Deck Spindle and Belt Drive Assembly (continued)

<i>Ref.</i>	<i>Part Number</i>	<i>Qty.</i>	<i>Description</i>	<i>Ref.</i>	<i>Part Number</i>	<i>Qty.</i>	<i>Description</i>
1	112-6221	1	Spindle ASM	35	112-0528	1	Spring-Extension
2	112-0413	1	LH Hanger Bracket ASM	36	112-6043	1	Spring-Extension
3	112-6172	1	Bracket-Idler	37	112-3746	1	Spring-Extension
4	112-3742	1	Brake ASM	38	112-0337	1	Wheel-Deck, Rear
5	112-6293	1	Deck ASM (With Decals)	39	112-6273	1	Bumper
5:2	112-6285	1	Decal-Chute	40	112-0366	1	Washer-Lock
5:3	112-6284	1	Decal-Deck	41	112-5989	1	Washer-Flat
5:4	112-1270	1	Decal-Routing, Belt	42	112-0916	1	Adapter-Nozzle, Water
6	112-6071	1	Rod-Keeper, Belt	43	112-0643	1	Washer-Lock
7	112-0855	1	Screw-HH	44	112-0485	1	Washer-Spring
8	112-0513	1	Screw-HH	45	112-0572	1	Washer-Flat
9	112-6070	1	Screw-TAP	46	112-0380	1	Washer-Flat
10	112-3745	1	Screw-HH	47	112-0334	1	Bolt-Shoulder
11	112-0373	1	Screw-HH	48	112-6274	1	Nozzle-Water, Deck
12	112-0906	1	Screw-HWHTF	49	112-0584	1	Spacer-Shoulder
13	112-6022	1	Screw-TAP	50	112-3747	1	Spacer-Shoulder
14	112-0843	1	Screw-HWH	51	112-6068	1	Bolt-Shoulder
15	112-0395	1	Screw-HWH	52	112-0315	1	Blade
16	112-0557	1	Screw-HH	53	112-0607	1	Rod-Deck, Front Adjustment
17	112-1090	1	Screw-HH	54	112-3748	1	Rod-Brake
18	112-0499	1	Screw-HH	55	112-5879	1	Rod-Keeper, Belt
19	112-0421	1	Screw-HH	56	112-0436	1	Pin-Handle, Deck Release
20	112-0458	1	Nut-Hex	57	112-0641	1	Cup-Pivot, Lift
21	112-0650	1	Nut-Lock, Flange	58	112-6274	1	Nozzle-Water, Deck
22	112-0636	1	Nut-Lock, Flange	59	112-0644	1	Spacer
23	112-0668	1	Nut-Lock, Flange	60	112-5800	1	Belt-V Type
24	112-0330	1	Nut-Lock, Flange	61	112-0314	1	Pulley-Idler
25	112-0859	1	Nut-Lock, Flange	63	112-6067	1	Cover-Belt
26	112-0351	1	Nut-Hex	64	112-0718	1	Bracket-Cable, Deck
27	112-0522	1	Nut-Hex	65	112-6066	1	Support-Bracket, Pivot
28	112-0476	1	Nut-Lock, Hex (Nylon)	67	112-0353	1	Discharge Chute ASM
29	112-0459	1	Pin-Cotter	68	112-6062	1	Shaft-Spindle
30	112-0412	1	Pin-Cotter	69	112-0377	1	Bearing-Ball
31	112-0327	1	Gear-Adjustment, Deck	70	112-6061	1	Spacer
32	112-6069	1	Bracket-Idler	71	112-0389	1	Spacer
33	112-0623	1	Retainer-Bolt	72	112-0613	1	Pulley-Deck
34	112-0406	1	Spring-Compression				

Attachments and Accessories

For 13AX61RG848 LX427 Lawn Tractor, Built On or After January 31 2009

Product Name	Model/Part
Washout Port Kit.....	112-5803
Blade Kit, Extreme (42 Inch Deck).....	112-6048
42 Inch Two-Stage Snowthrower.....	190-032-101
46 Inch Front Blade.....	190-833-000
42IN TWIN BAGGER - LX TRACTORS.....	19A30002000
8 Inch Rear Wheel Weight Kit.....	59159
Mulch Kit (42 Inch Deck).....	77210
10 cu. ft. Poly Dump Cart.....	79935
Folding Loading Ramp.....	79949
Sweeper.....	79985
Tire Chain Kit.....	82722
Blade Kit (2 Blades, 42 Inch Deck).....	98022

Notes:

Notes:

Notes:



Count on it.