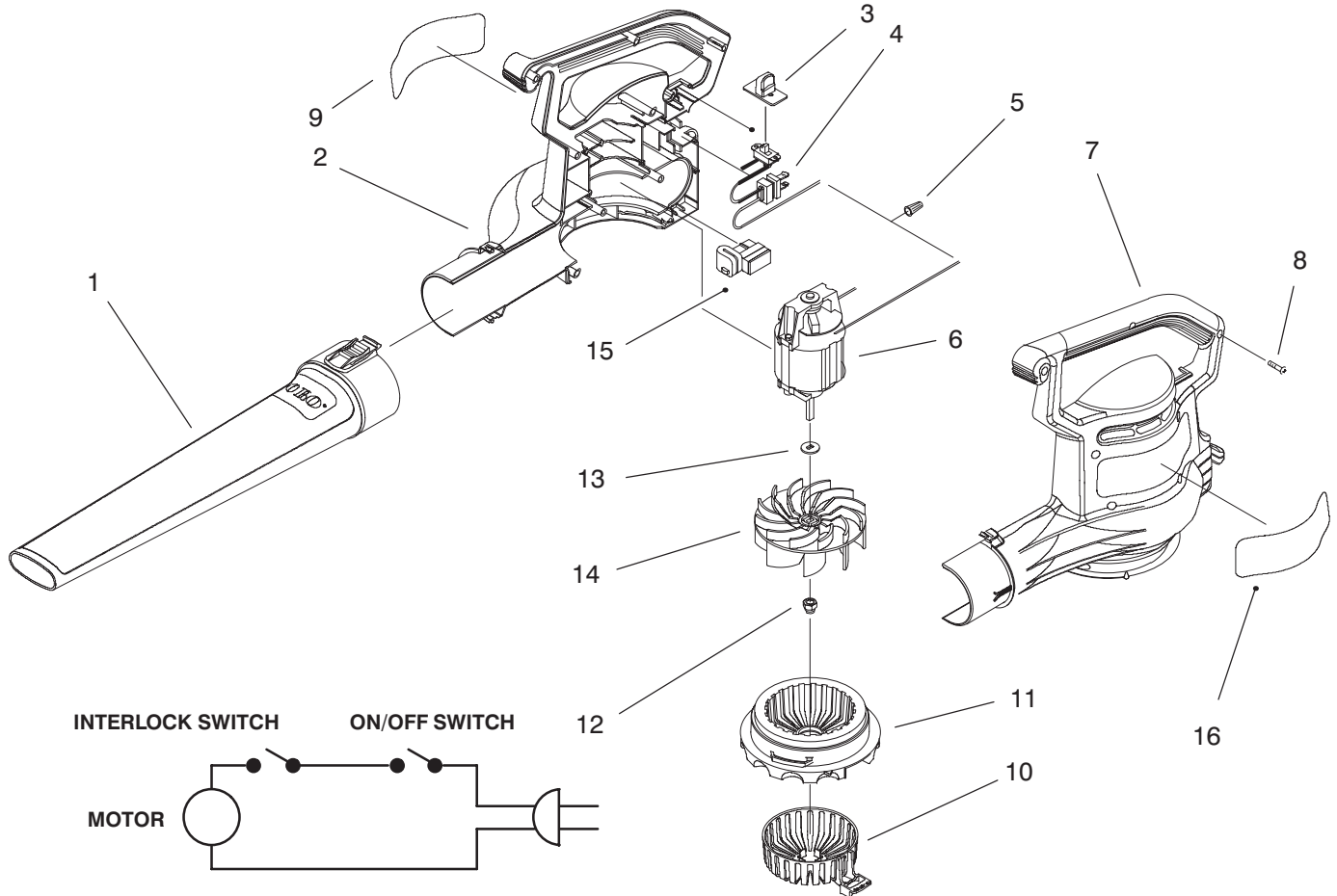




MODEL NO. 51582-590001 & UP
MODEL NO. 51583-590001 & UP

PARTS CATALOG

SUPER BLOWER VAC
SUPER BLOWER YARD VAC
 Blower & Vacuum



C-2170

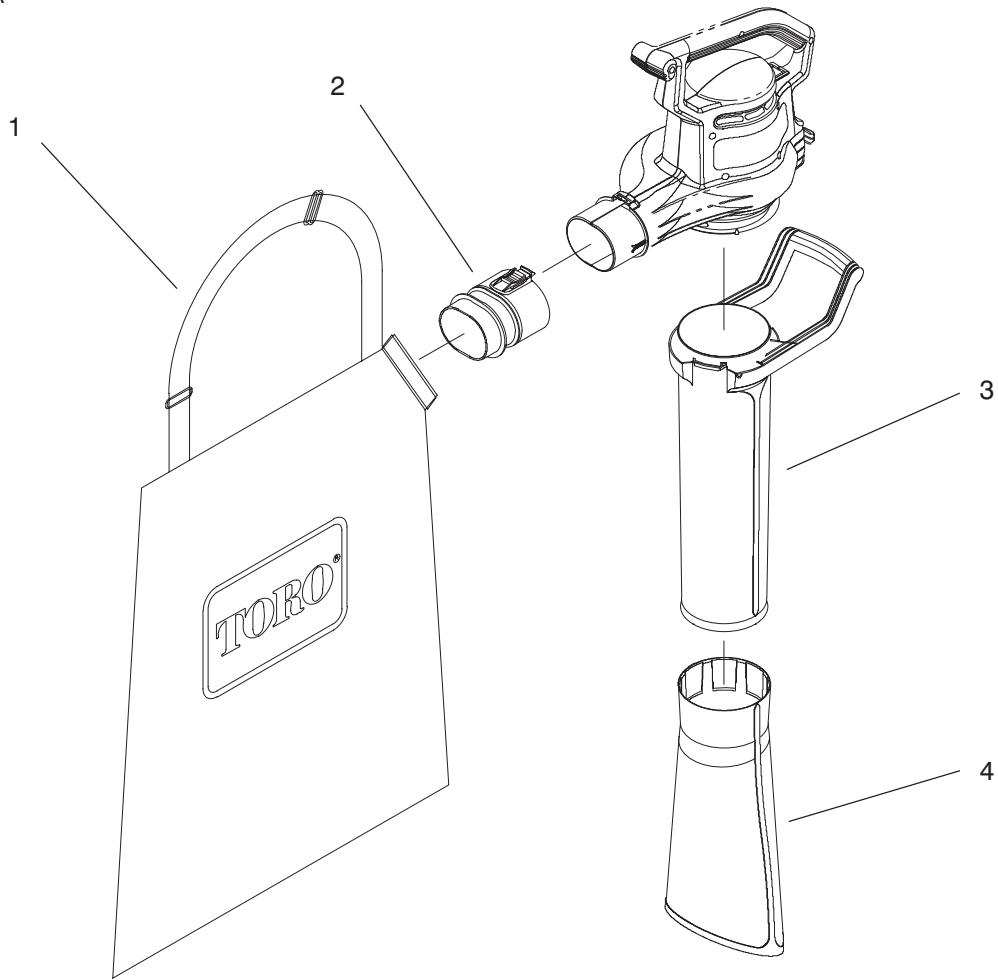
BLOWER ASSEMBLY

Ref. No.	Part No.	Description	No. Used
†1	93-0571	Tube - Blower	1
2	93-0563	Housing - R.H. (Model No. 51582 Only)	1
*	93-0562	Housing - R.H. (Model No. 51583 Only)	1
3	93-0599	Cover - Switch (Model No. 51582 Only)	1
*	93-0565	Cover - Switch (Model No. 51583 Only)	1
4	93-0578	Harness Assembly	1
5	73-6570	Connector - Wire Nut	1
6	93-0575	Motor	1
7	93-0561	Housing - L.H. (Model No. 51582 Only)	1
*	93-0560	Housing - L.H. (Model No. 51583 Only)	1

Ref. No.	Part No.	Description	No. Used
8	94-4496	Screw - Phillips Hd. Tap.	9
9	93-0579	Decal - Logo (Model No. 51582 Only)	1
*	93-0580	Decal - Logo (Model No. 51583 Only)	1
10	93-0559	Choke - Air (Model No. 51582 Only)	1
11	93-0569	Cover - Inlet (Model No. 51582 Only)	1
*	93-0568	Cover - Inlet (Model No. 51583 Only)	1
12	73-5380	Nut - Cap Hex	1
13	93-0585	Washer	1
14	93-0564	Impeller	1
15	93-0567	Switch - Interlock	1
16	93-7697	Decal - Warning	1

* Not Illustrated

† Included in tube assembly No. 93-9989



C-2171

VACUUM TUBE & BAG ASSEMBLY

Ref. No.	Part No.	Description	No. Used
1	93-0583	Bag	1
2	93-0574	Tube - Bag Inlet	1

Ref. No.	Part No.	Description	No. Used
†3	93-0572	Tube - Vac Upper	1
†4	93-0573	Tube - Vac Lower	1

* Not Illustrated

† Included in tube assembly No. 93-9989