



LX423 Lawn Tractor

Model No. 13AX60RG848 - 1 and up.

Parts Catalog

Ordering Replacement Parts

To order replacement parts, please supply the part number, the quantity, and the description of each part desired.

Understanding Reference Numbers

Each identified part in an illustration has a reference number. The reference number for a part also appears in the parts list, along with other information about the part.

This catalog uses two special reference number formats, one to indicate parts in a service assembly and another to indicate the quantity of a given part in an illustration.

Service Assembly Reference Numbers

Parts in service assemblies have reference numbers in the form a:b. The a represents the reference number of the entire service assembly and the b represents a sequential number unique to each part within the service assembly.

For example, a wheel assembly might be identified by reference number 6, the tire by 6:1, the valve by 6:2, and the wheel by 6:3. When you order the assembly identified by reference number 6, you receive all parts identified by reference numbers 6:1, 6:2, and 6:3. However, you may also order any part individually. Reference numbers of this type appear in illustrations and in part lists.

Reference Numbers Indicating Quantity

In an illustration, if a reference number indicates more than one part, the reference number has the form nX y. The n represents the quantity of the part, the X is the multiplication symbol, and the y represents the reference number.

For example, in an illustration, the reference number 2X 37 means that two of the parts identified by reference number 37 are indicated.

Contents

Description	Page	Description	Page
Front and Rear Wheel Assembly 3	Transmission, Belt and Control Pedal Assembly 12
Steering and Front Axle Assembly 4	Single Speed Transmission Assembly No. 112-6083 14
Frame, Battery and Manual PTO Assembly 6	42 Inch Deck Spindle and Belt Drive Assembly 16
Seat, Fender and Deck Lift Assembly 8	Muffler and Shield Assembly 18
Fuel Tank, Hood and Dash Assembly 10	Attachments and Accessories List 19

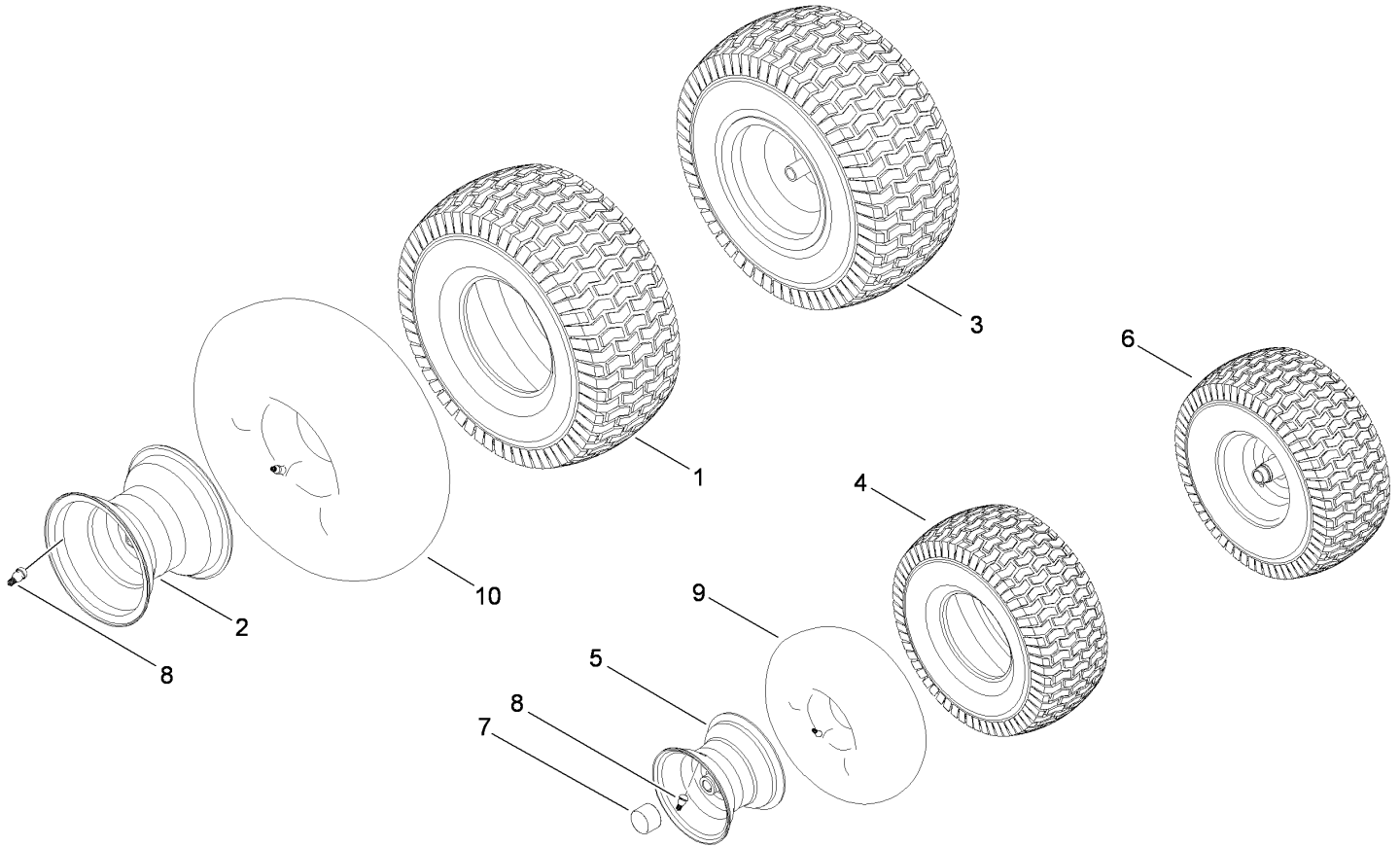
Part Description Abbreviations

Part descriptions in this catalog may include the following abbreviations.

AR. as required	HWHTF. hex washer head thread forming
ASM. assembly	HYD. hydraulic
BBC. blade brake clutch	LH. left hand
CARR. carriage	NI. nylon insert
CCW. counter clock wise	NPTF. national pipe thread fine
CW. clockwise	PFH. phillips flat head
DEG. degrees	PPH. phillips pan head
ECM. electronic control module	PPHTF. phillips pan head thread forming
EXT. external	PRH. phillips round head
FH. flat head	PTH. phillips truss head
GA. gauge	PTO. power-take-off
HD. heavy-duty	RH. right hand
HF. hex flange	ROPS. roll-over protection system
HH. hex head	SFH. slotted fillister head
HHF. hex head flange	SHH. slotted hex head
HHFTF. hex head flange thread forming	SHWH. slotted hex washer head
HJ. hex jam	SPH. slotted pan head
HLH. hex lag head	SQH. square head
HOC. height-of-cut	SRH. slotted round head
HSBH. hex socket button head	STD. standard
HSFH. hex socket flat head	TAP. self tapping
HSH. hex socket head	TTH. torx truss head
HWH. hex washer head	

Footnotes

- ❶ Not illustrated

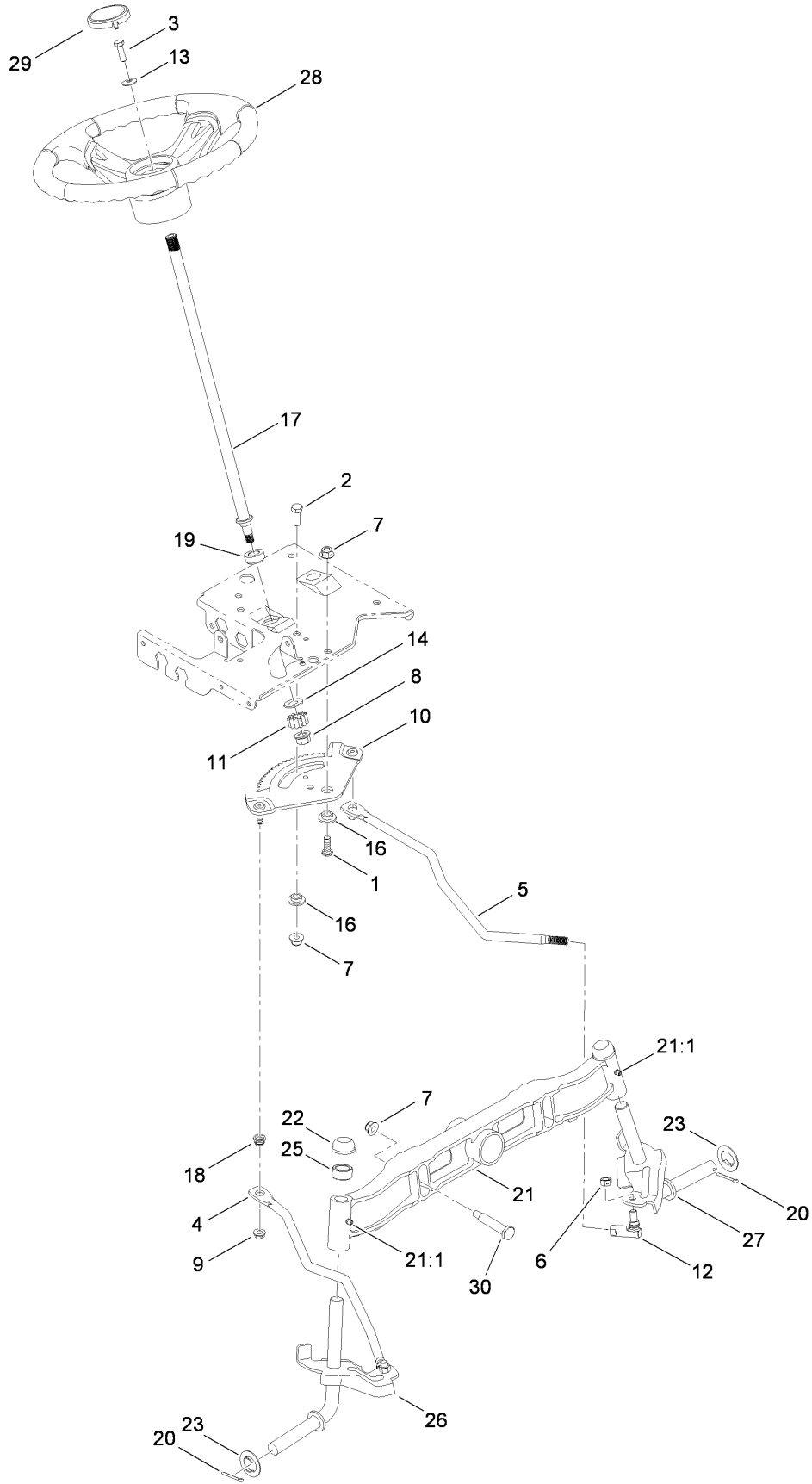


Front and Rear Wheel Assembly

Ref	Part No.	Qty.	Description
1	112-0713	1	Tire-Multi Trac
2	112-6201	1	Rim-Wheel, Rear
3	112-0496	1	Rear Wheel ASM
4	112-0576	1	Tire-Front
5	112-0468	1	Rim-Wheel, Front
6	112-0491	1	Front Wheel ASM
7	112-5968	1	Cap-Hub
8	112-0503	1	Valve-Air, Tubeless
9	232-39	1	Tube-Inner
10	93-3893	1	Tube-Inner

--	--	--	--

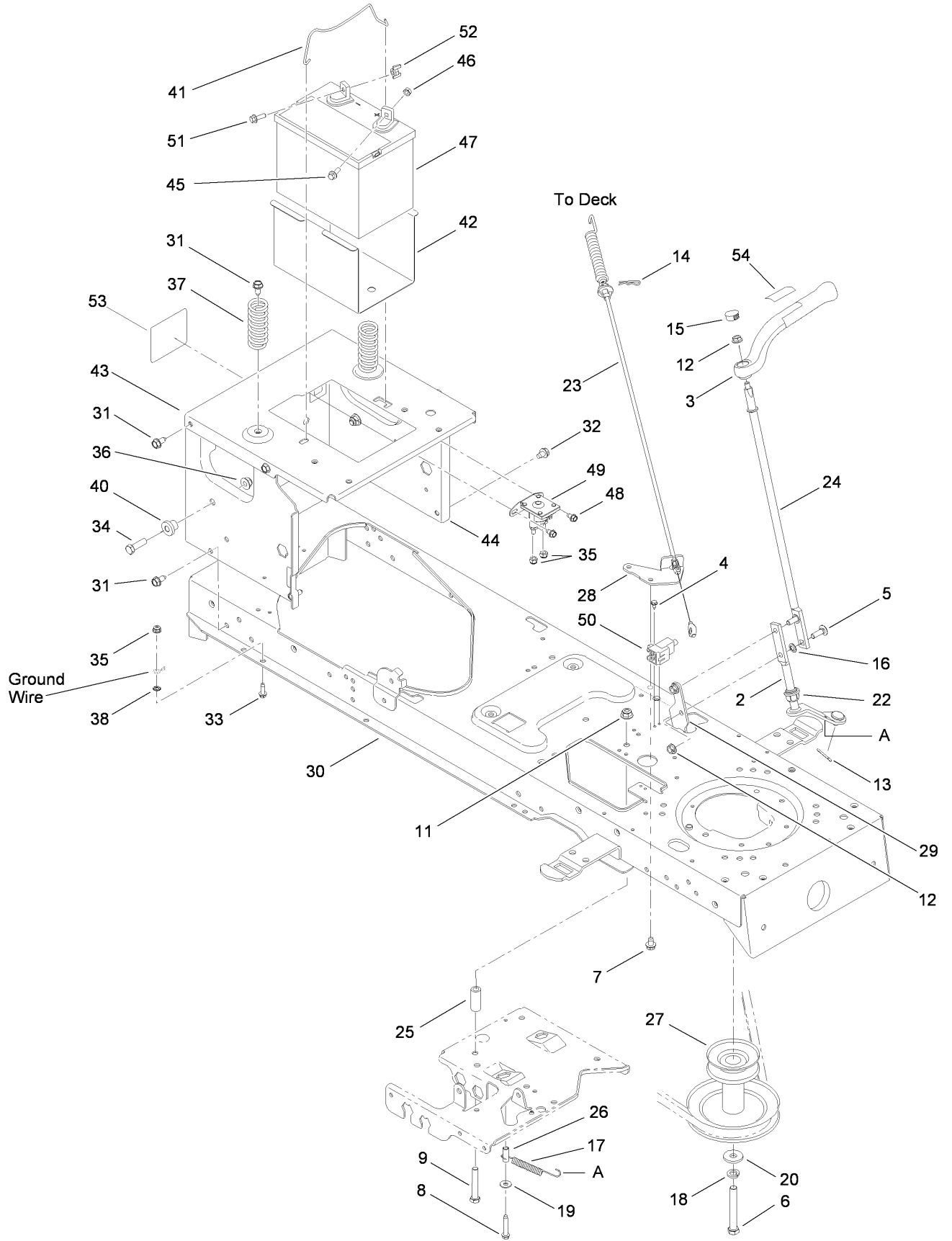
Steering and Front Axle Assembly



Steering and Front Axle Assembly

Ref	Part No.	Qty.	Description				
1	112-0631	1	Screw-HH				
2	112-0492	1	Screw-HH				
3	112-0473	1	Screw-HH				
4	112-0355	1	Link-Drag, RH				
5	112-0346	1	Link-Drag, LH				
6	112-0483	1	Nut-Hex, Lock				
7	112-0668	1	Nut-Lock, Flange				
8	112-0859	1	Nut-Lock, Flange				
9	112-0511	1	Nut-Lock, Flange				
10	112-0862	1	Gear-Steering				
11	112-0863	1	Gear-Pinion, Steering				
12	112-0917	1	Ball Joint ASM				
13	112-0924	1	Washer-Flat				
14	112-0925	1	Washer-Flat				
16	112-0881	1	Spacer-Shoulder				
17	112-6097	1	Shaft-Steering				
18	112-0929	1	Bushing				
19	112-6257	1	Bearing-Flange, Hex				
20	112-6222	1	Pin-Cotter				
21	112-6099	1	Pivot-Axle, Cast Iron				
21:1	112-0926	1	Fitting-Grease				
22	112-0323	1	Cap				
23	112-6258	1	Washer-Flat				
25	112-6136	1	Spacer				
26	112-6015	1	RH Axle ASM				
27	112-6016	1	LH Axle ASM				
28	112-6100	1	3 Spoke Wheel Steering ASM				
29	112-3734	1	Cap-Wheel, Steering				
30	112-0699	1	Bolt-Shoulder				

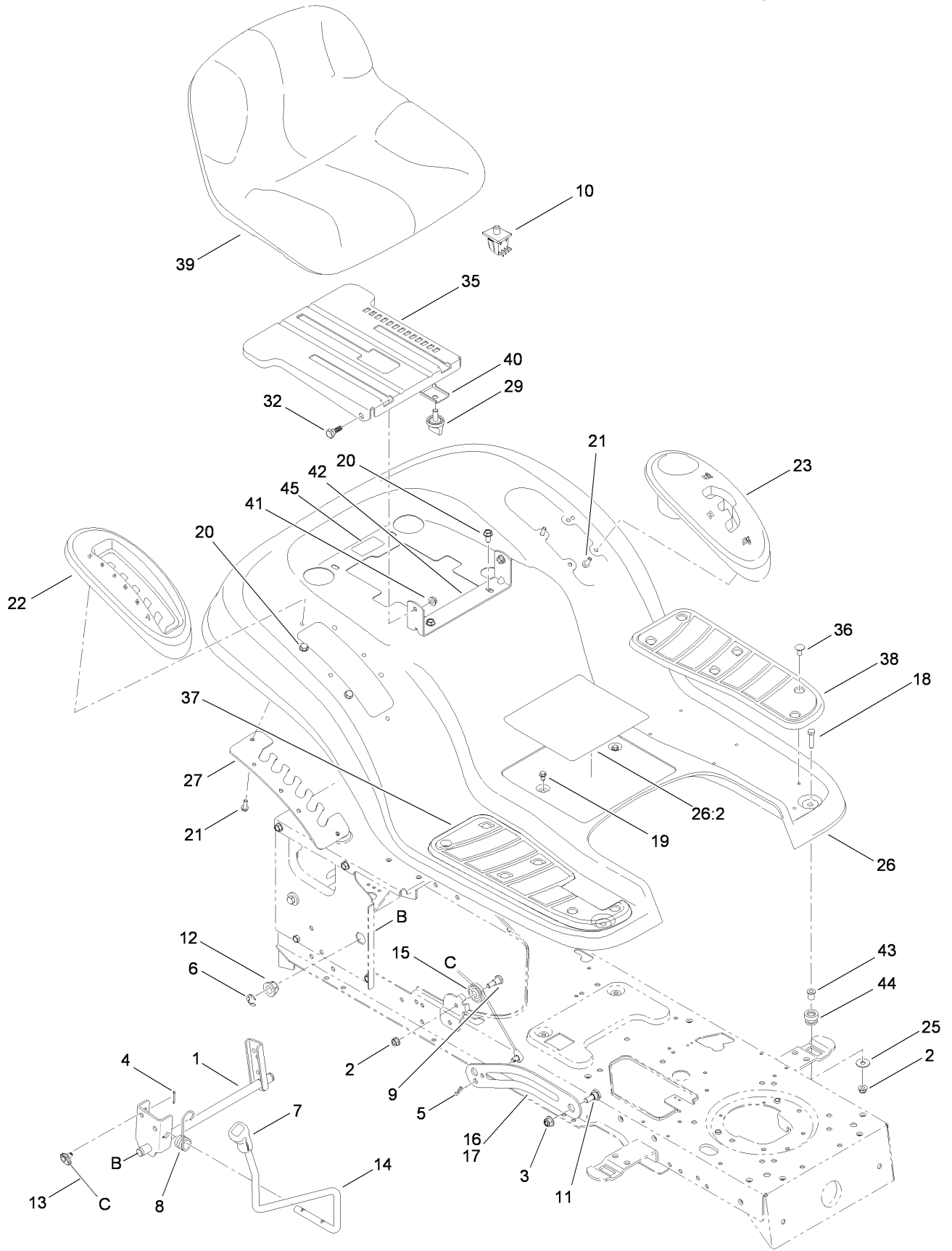
Frame, Battery and Manual PTO Assembly



Frame, Battery and Manual PTO Assembly

Ref	Part No.	Qty.	Description				
2	112-6007	1	Lever-Engage, PTO				
3	112-6101	1	Knob PTO ASM				
4	112-6206	1	Bolt-Shoulder				
5	112-0598	1	Bolt-CARR				
6	112-6008	1	Screw-HH				
7	112-0676	1	Screw-TAP				
8	112-0843	1	Screw-HWH				
9	112-6009	1	Screw-HH				
11	112-0668	1	Nut-Lock, Flange				
12	112-0511	1	Nut-Lock, Flange				
13	112-6010	1	Pin-Cotter				
14	112-0912	1	Pin-Hair				
15	112-6103	1	Plug-Knob, PTO Lever				
16	112-0645	1	Nut-Push				
17	112-0567	1	Spring-Extension				
18	112-0428	1	Washer-Lock				
19	112-5989	1	Washer-Flat				
20	112-0380	1	Washer-Flat				
22	112-0384	1	Bearing-Flange, Hex (Split)				
23	112-6137	1	Cable-Engage, Deck				
24	112-6104	1	Rod-Engage, Deck				
25	112-0433	1	Spacer				
26	112-0644	1	Spacer				
27	112-0333	1	Pulley-Engine				
28	112-6105	1	Bracket-Mount, Cable				
29	112-0516	1	Bracket-Stop				
30	112-5974	1	Lower Frame ASM				
31	112-6070	1	Screw-TAP				
32	112-0676	1	Screw-TAP				
33	112-0587	1	Screw-TAP				
34	112-0557	1	Screw-HH				
35	112-0636	1	Nut-Lock, Flange				
36	112-0668	1	Nut-Lock, Flange				
37	112-6208	1	Spring-Compression				
38	112-0703	1	Washer-Lock, External				
40	112-0661	1	Spacer-Shoulder				
41	112-0581	1	Rod-Holddown, Battery				
42	112-0570	1	Tray-Battery				
43	112-6209	1	Bracket-Frame, Seat				
44	112-6254	1	Frame-Upper				
45	112-1070	1	Bolt-Carriage				
46	112-0546	1	Nut-Sems				
47	112-0425	1	Battery-245, Cca (Dry Flat Top)				
48	112-6108	1	Screw-TAP				
49	112-6073	1	Solenoid-12V, 2 Post 2 Tab				
50	112-6210	1	Switch-Interlock, No/Nc				
51	112-6182	1	Bolt-Shoulder				
52	112-3694	1	Nut-Wing, Plastic				
53	112-1284	1	Decal				
54	112-6286	1	Decal-PTO				

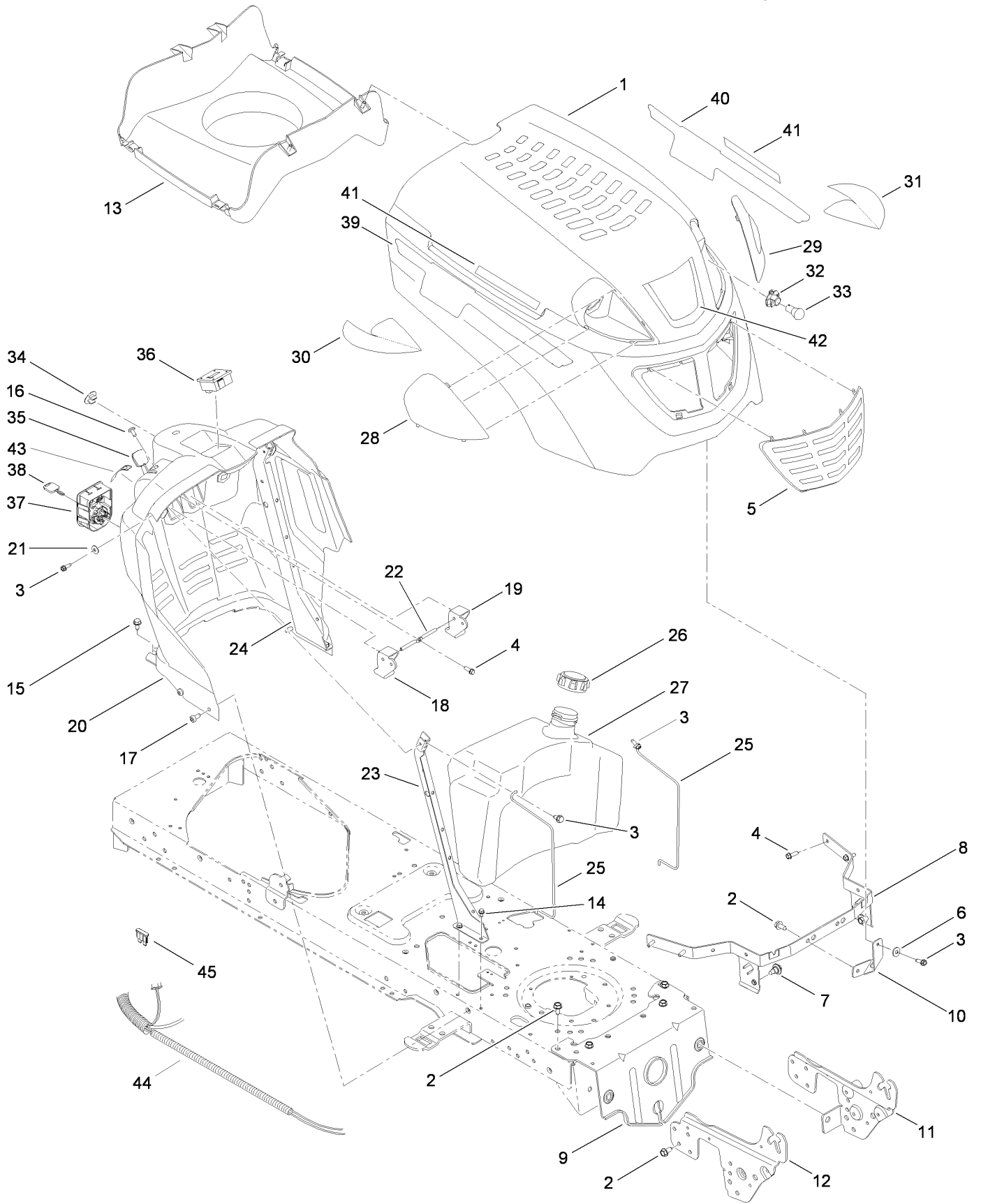
Seat, Fender and Deck Lift Assembly



Seat, Fender and Deck Lift Assembly

Ref	Part No.	Qty.	Description				
1	112-5969	1	Lift Shaft ASM				
2	112-0650	1	Nut-Lock, Flange				
3	112-0668	1	Nut-Lock, Flange				
4	112-0459	1	Pin-Cotter				
5	112-0568	1	Pin-Cotter				
6	112-0586	1	Ring-E				
7	112-0585	1	Grip-Handle				
8	112-0477	1	Spring-Torsion				
9	112-0443	1	Bolt-Shoulder				
10	110-9889	1	Switch-Seat				
11	112-0669	1	Bolt-Shoulder				
12	112-0347	1	Bearing-Flange				
13	112-0374	1	Cable-Lift				
14	112-5970	1	Handle-Lift				
15	112-0502	1	Pulley-Roller				
16	112-6259	1	Arm-Lift, RH				
17	112-6260	1	Arm-Lift, LH				
18	112-0373	1	Screw-HH				
19	112-0524	1	Screw-HWHTF				
20	112-6070	1	Screw-TAP				
21	112-0509	1	Screw-TAP				
22	112-6226	1	Cover-Lift, Lever				
23	112-6261	1	Cover-Shaft (W/Cup Holder)				
25	112-0582	1	Washer-Flat				
26	112-6292	1	Fender With Decal				
26:2	112-6281	1	Decal-Safety				
27	112-0629	1	Bracket-Adjusting, Lift				
29	112-0409	1	Knob				
32	112-0575	1	Bolt-Shoulder				
35	112-6214	1	Bracket-Mount, Seat				
36	112-0549	1	Clip-Ratchet, Fastener				
37	112-0540	1	Pad-Foot, RH				
38	112-0545	1	Pad-Foot, LH				
39	112-6231	1	Seat				
40	112-6216	1	Bracket-Knob, Adjustment				
41	112-0511	1	Nut-Lock, Flange				
42	112-6217	1	Bracket-Pivot, Seat				
43	112-3733	1	Spacer				
44	112-3732	1	Grommet				
45	112-6282	1	Decal-Toro Hotline				

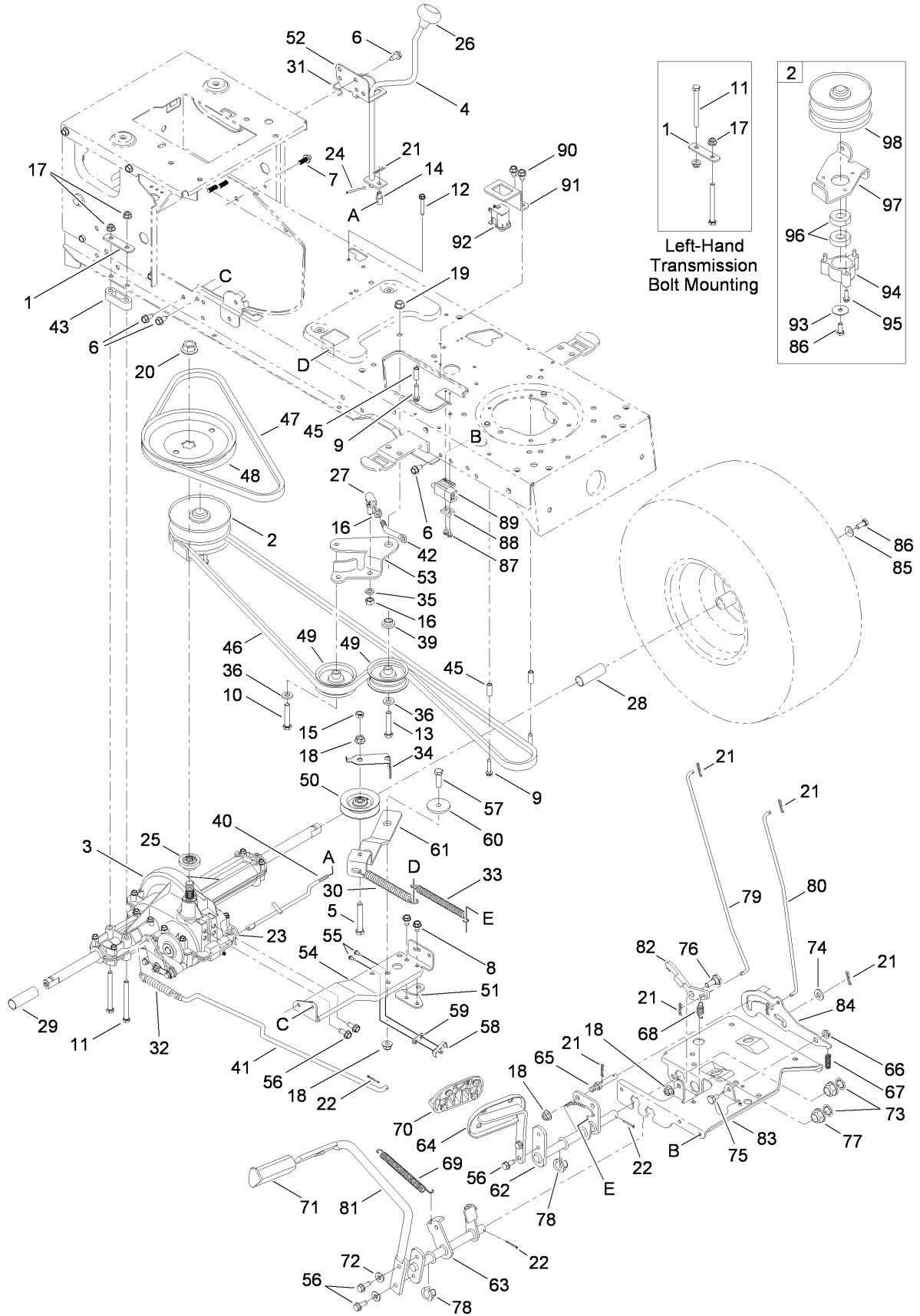
Fuel Tank, Hood and Dash Assembly



Fuel Tank, Hood and Dash Assembly

Ref	Part No.	Qty.	Description				
1	112-0444	1	Hood				
2	112-6070	1	Screw-TAP				
3	112-0587	1	Screw-TAP				
4	112-0509	1	Screw-TAP				
5	112-0381	1	Grill				
6	112-5989	1	Washer-Flat				
7	112-6128	1	Bolt-Shoulder, TAP				
8	112-5985	1	Bracket-Pivot				
9	112-6127	1	Bracket-Pivot				
10	112-5986	1	Bracket-Support, Hood				
11	112-6218	1	Bracket-Support, Pivot (LH)				
12	112-6219	1	Bracket-Support, Pivot (RH)				
13	112-6124	1	Plenium-Hood				
14	112-0524	1	Screw-HWHTF				
15	112-0676	1	Screw-TAP				
16	112-0550	1	Screw-TAP				
17	112-0563	1	Screw-TAP				
18	112-0526	1	Lever-Cruise				
19	112-0580	1	Lever-Brake				
20	112-6123	1	Dash-Manual, PTO				
21	112-0485	1	Washer-Spring				
22	112-0604	1	Rod-Lever, Bent				
23	112-6262	1	Support-Dash, Plate (RH)				
24	112-6263	1	Support-Dash, Plate (LH)				
25	112-0678	1	Rod-Support				
26	112-6264	1	Cap-Fuel				
27	112-6119	1	Tank-Fuel, 3 Gal				
28	112-0447	1	Lens-RH				
29	112-0446	1	Lens-LH				
30	112-5810	1	Reflector-RH				
31	112-5811	1	Reflector-LH				
32	112-0408	1	Socket-Headlight				
33	112-0402	1	Lamp-12V, Miniature				
34	112-0535	1	Plug-Choke				
35	112-6253	1	Cable-Throttle/Choke				
36	112-6117	1	Meter-Hour				
37	112-6116	1	Module-Switch, Ignition				
38	112-6115	1	Key-Ignition				
39	112-5953	1	Decal-Hood, Right Side				
40	112-5952	1	Decal-Hood, Left Side				
41	112-6287	2	Decal				
42	112-3716	1	Decal-Hood				
43	112-6283	1	Decal-Throttle				
44	112-6295	1	Harness-Wire				
45	112-5943	1	Fuse-20 Amp				

Transmission, Belt and Control Pedal Assembly

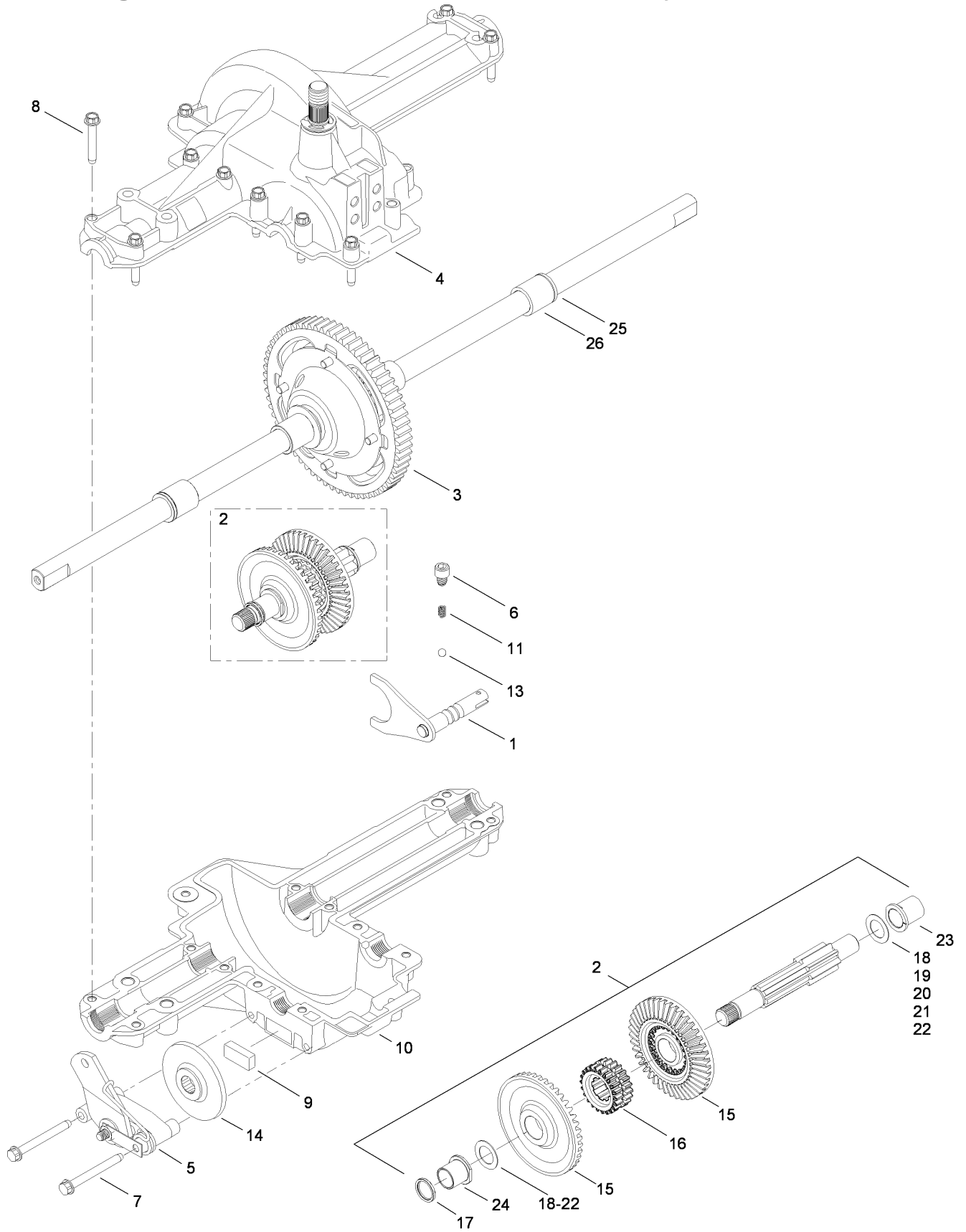


Transmission, Belt and Control Pedal Assembly

Ref	Part No.	Qty.	Description
1	112-0628	1	Bracket-Mounting, Transmission
2	112-6129	1	Pulley ASM
3	112-6083	1	Single Speed Transaxle ASM
4	112-0627	1	Shift Lever ASM
5	112-6130	1	Screw-HH
6	112-6070	1	Screw-TAP
7	112-6131	1	Screw-HH
8	112-0676	1	Screw-TAP
9	112-0603	1	Screw-HH
10	112-0469	1	Screw-TAP
11	112-0667	1	Screw-HH
12	112-0590	1	Screw-HH
13	112-0421	1	Screw-HH
14	112-0592	1	Ferrule-Adjustable
15	112-6132	1	Nut-Jam, Lock
16	112-0343	1	Nut-Hex
17	112-0650	1	Nut-Lock, Flange
18	112-0668	1	Nut-Lock, Flange
19	112-0385	1	Nut-Lock, Flange
20	112-0451	1	Nut-Flange
21	112-0459	1	Pin-Cotter
22	112-0568	1	Pin-Cotter
23	112-0639	1	Pin-Hair
24	112-0412	1	Pin-Cotter
25	112-6235	1	Hub-Pulley, Spline
26	112-0514	1	Knob-Shift
27	112-0603	1	Screw-HH
28	112-0670	1	Sleeve
29	112-0683	1	Sleeve
30	112-5991	1	Spring-Extension
31	112-0357	1	Clip-Spring, Shifter
32	112-6268	1	Spring-Extension
33	112-0348	1	Spring-Extension
34	112-6270	1	Keeper-Belt
35	112-0415	1	Washer-Lock
36	112-0544	1	Washer-Flat
39	112-0345	1	Spacer-Shoulder
40	112-5992	1	Rod-Shift
41	112-0655	1	Rod-Brake
42	112-0538	1	Rod-Adjustment, Idler
43	112-0673	1	Spacer-Transaxle
45	112-0644	1	Spacer
46	112-0301	1	Belt-Drive, Variable Speed
47	112-0305	1	Belt-Drive, Transmission
48	112-0379	1	Pulley-V (W/Hub)
49	112-0313	1	Pulley-Idler, Flat
50	112-6133	1	Pulley-Idler, V-Type
51	112-6271	1	Bracket-Shift
52	112-0638	1	Bracket-Shift
53	112-0525	1	Bracket-Idler, Center Double
54	112-6134	1	Bracket ASM
55	112-0626	1	Screw-HWHTF

Ref	Part No.	Qty.	Description
56	112-0395	1	Screw-HWH
57	112-0557	1	Screw-HH
58	112-0602	1	Switch-Spring, Short
59	112-0625	1	Plate-Insulator
60	112-0584	1	Spacer-Shoulder
61	112-6135	1	Bracket-Idler
62	112-0539	1	Speed Control ASM
63	112-5998	1	Speed Control ASM
64	112-0680	1	Pedal ASM
65	112-0599	1	Pin
66	112-0511	1	Nut-Lock, Flange
67	112-0506	1	Spring
68	112-0510	1	Spring-Extension
69	112-0348	1	Spring-Extension
70	112-0543	1	Pad-Pedal
71	112-6001	1	Pad-Brake
72	112-0366	1	Washer-Lock
73	112-0339	1	Washer-Flat
74	112-0541	1	Washer-Flat
75	112-0542	1	Bolt-Shoulder
76	112-6225	1	Bolt-Shoulder
77	112-0347	1	Bearing-Flange
78	112-0387	1	Bearing-Flange, Hex (Split)
79	112-6150	1	Rod-Brake, Lock
80	112-0662	1	Rod-Control, Cruise
81	112-6005	1	Pedal-Brake
82	112-6004	1	Latch-Cruise
83	112-0681	1	Bracket-Support, Steering
84	112-0679	1	Bracket-Lockout
85	112-0435	1	Washer-Bell
86	112-0551	1	Screw-HH
87	112-0651	1	Screw-TAP
88	112-0671	1	Plate-Switch
89	112-0455	1	Switch-Interlock
90	112-0524	1	Screw-HWHTF
91	112-3737	1	Bracket-Switch, Parking Brake
92	112-0441	1	Switch-Mount, Snap
93	112-0500	1	Washer-Flat
94	112-5996	1	Cup-Bearing
95	112-0843	1	Screw-HWH
96	112-0928	1	Bearing-Ball
97	112-5995	1	Bracket-Pulley
98	112-6129	1	Pulley ASM

Single Speed Transmission Assembly No. 112-6083



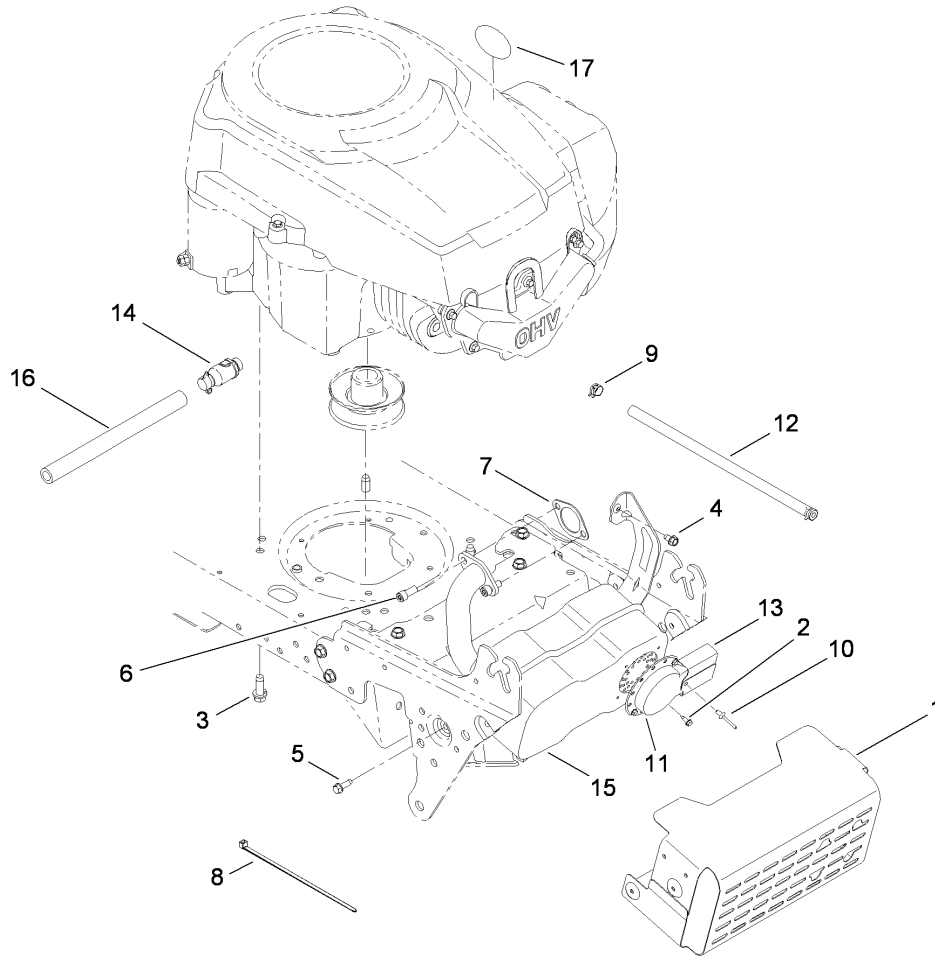
Single Speed Transmission Assembly No. 112-6083

Ref	Part No.	Qty.	Description			
1	112-0806	1	Shift Fork ASM			
2	112-6084	1	Drive Shaft ASM			
3	112-6085	1	Differential ASM			
4	112-6086	1	Upper Housing ASM			
5	112-0832	1	Brake ASM			
6	112-6087	1	Screw-TAP			
7	112-0698	1	Screw-HWH			
8	112-0839	1	Screw-TAP			
9	112-0741	1	Puck-Brake			
10	112-6088	1	Housing-Lower			
11	112-0801	1	Spring-Detent			
13	112-0799	1	Ball-Detent			
14	112-0817	1	Disc-Brake			
15	112-6089	1	Gear-Bevel, 42T (Spline)			
16	112-6090	1	Collar-Cluster			
17	112-6091	1	Seal			
18	112-0748	1	Washer-Flat			
19	112-0750	1	Washer-Flat			
20	112-0745	1	Washer-Flat			
21	112-0773	1	Washer-Thrust			
22	112-0755	1	Washer-Thrust			
23	112-0794	1	Bearing-Flange			
24	112-0795	1	Bearing-Flange			
25	112-0800	1	Seal			
26	112-6092	1	Bearing-Sleeve			
27	110-9891	1	Grease-Darina, Transmission			

42 Inch Deck Spindle and Belt Drive Assembly

Ref	Part No.	Qty.	Description
1	112-6221	1	Spindle ASM
2	112-0413	1	LH Hanger Bracket ASM
3	112-6172	1	Bracket-Idler
4	112-3742	1	Brake ASM
5	112-6293	1	Deck ASM (With Decals)
5:2	112-6285	1	Decal-Chute
5:3	112-6284	1	Decal-Deck
5:4	112-1270	1	Decal-Routing, Belt
6	112-6071	1	Rod-Keeper, Belt
7	112-0855	1	Screw-HH
8	112-0513	1	Screw-HH
9	112-6070	1	Screw-TAP
10	112-3745	1	Screw-HH
11	112-0373	1	Screw-HH
12	112-0906	1	Screw-HWHTF
13	112-6022	1	Screw-TAP
14	112-0843	1	Screw-HWH
15	112-0395	1	Screw-HWH
16	112-0557	1	Screw-HH
17	112-1090	1	Screw-HH
18	112-0499	1	Screw-HH
19	112-0421	1	Screw-HH
20	112-0458	1	Nut-Hex
21	112-0650	1	Nut-Lock, Flange
22	112-0636	1	Nut-Lock, Flange
23	112-0668	1	Nut-Lock, Flange
24	112-0330	1	Nut-Lock, Flange
25	112-0859	1	Nut-Lock, Flange
26	112-0351	1	Nut-Hex
27	112-0522	1	Nut-Hex
28	112-0476	1	Nut-Lock, Hex (Nylon)
29	112-0459	1	Pin-Cotter
30	112-0412	1	Pin-Cotter
31	112-0327	1	Gear-Adjustment, Deck
32	112-6069	1	Bracket-Idler
33	112-0623	1	Retainer-Bolt
34	112-0406	1	Spring-Compression
35	112-0528	1	Spring-Extension
36	112-6043	1	Spring-Extension
37	112-3746	1	Spring-Extension
38	112-0337	1	Wheel-Deck, Rear
39	112-6273	1	Bumper
40	112-0366	1	Washer-Lock
41	112-5989	1	Washer-Flat
42	112-0916	1	Adapter-Nozzle, Water
43	112-0643	1	Washer-Lock
44	112-0485	1	Washer-Spring
45	112-0572	1	Washer-Flat
46	112-0380	1	Washer-Flat
47	112-0334	1	Bolt-Shoulder
48	112-6274	1	Nozzle-Water, Deck
49	112-0584	1	Spacer-Shoulder

Ref	Part No.	Qty.	Description
50	112-3747	1	Spacer-Shoulder
51	112-6068	1	Bolt-Shoulder
52	112-0315	1	Blade
53	112-0607	1	Rod-Deck, Front Adjustment
54	112-3748	1	Rod-Brake
55	112-5879	1	Rod-Keeper, Belt
56	112-0436	1	Pin-Handle, Deck Release
57	112-0641	1	Cup-Pivot, Lift
58	112-6275	1	Spacer
59	112-0644	1	Spacer
60	112-5800	1	Belt-V Type
61	112-0314	1	Pulley-Idler
63	112-6067	1	Cover-Belt
64	112-0718	1	Bracket-Cable, Deck
65	112-6066	1	Support-Bracket, Pivot
67	112-0353	1	Discharge Chute ASM
68	112-6062	1	Shaft-Spindle
69	112-0377	1	Bearing-Ball
70	112-6061	1	Spacer
71	112-0389	1	Spacer
72	112-0613	1	Pulley-Deck



Muffer and Shield Assembly

Ref	Part No.	Qty.	Description
1	112-6202	1	Shield-Muffer
2	112-0626	1	Screw-HWHTF
3	112-6163	1	Screw-HH, TAP
4	112-0524	1	Screw-HWHTF
5	112-0587	1	Screw-TAP
6	112-6012	1	Screw-HSH
7	112-6203	1	Gasket-Exhaust
8	112-0527	1	Tie-Cable
9	112-0573	1	Clamp-Hose
10	112-3741	1	Rivet-Pop
11	112-0453	1	Deflector-Muffer
12	112-0720	1	Hose-Fuel
13	112-0730	1	Deflector-Muffer, Long
14	110-9890	1	Drain-Oil
15	112-6204	1	Muffer-Single, Kohler
16	112-0553	1	Hose-Drain
17	112-5960	1	Decal-Check Oil

--	--	--	--

Attachments and Accessories

For 13AX60RG848 - LX423 Lawn Tractor

Product Name	Model/Part
Washout Port Kit	112-5803
Blade Kit, Extreme (42 Inch Deck)	112-6048
42 Inch Two-Stage Snowthrower	190-032-101
42 Inch Twin Bagger	190-180-190
46 Inch Front Blade	190-833-000
8 Inch Rear Wheel Weight Kit	59159
Mulch Kit (42 Inch Deck)	77210
10 cu. ft. Poly Dump Cart	79935
Folding Loading Ramp	79949
Sweeper	79985
Tire Chain Kit	82722
Blade Kit (2 Blades, 42 Inch Deck)	98022

