



ProCore[®] SR72 Aerator

Model No. 09926 - 290000001 and up.

Parts Catalog

Ordering Replacement Parts

To order replacement parts, please supply the part number, the quantity, and the description of each part desired.

Understanding Reference Numbers

Each identified part in an illustration has a reference number. The reference number for a part also appears in the parts list, along with other information about the part.

This catalog uses two special reference number formats, one to indicate parts in a service assembly and another to indicate the quantity of a given part in an illustration.

Service Assembly Reference Numbers

Parts in service assemblies have reference numbers in the form a:b. The a represents the reference number of the entire service assembly and the b represents a sequential number unique to each part within the service assembly.

For example, a wheel assembly might be identified by reference number 6, the tire by 6:1, the valve by 6:2, and the wheel by 6:3. When you order the assembly identified by reference number 6, you receive all parts identified by reference numbers 6:1, 6:2, and 6:3. However, you may also order any part individually. Reference numbers of this type appear in illustrations and in part lists.

Reference Numbers Indicating Quantity

In an illustration, if a reference number indicates more than one part, the reference number has the form nX y. The n represents the quantity of the part, the X is the multiplication symbol, and the y represents the reference number.

For example, in an illustration, the reference number 2X 37 means that two of the parts identified by reference number 37 are indicated.

Contents

| Description | Page | Description | Page |
|--------------------------------|---------|--------------------------------|----------|
| Drive Assembly | 3 | RH Crankshaft Assembly | 8 |
| Frame and Roller Assembly | 4 | RH Outside Crankshaft Assembly | 9 |
| LH Outside Crankshaft Assembly | 5 | Connecting Rod Assembly | 10 |
| LH Crankshaft Assembly | 6 | Lower Arm and Hinge Assembly | 11 |
| Center Crankshaft Assembly | 7 | Cover Assembly | 12 |

Part Description Abbreviations

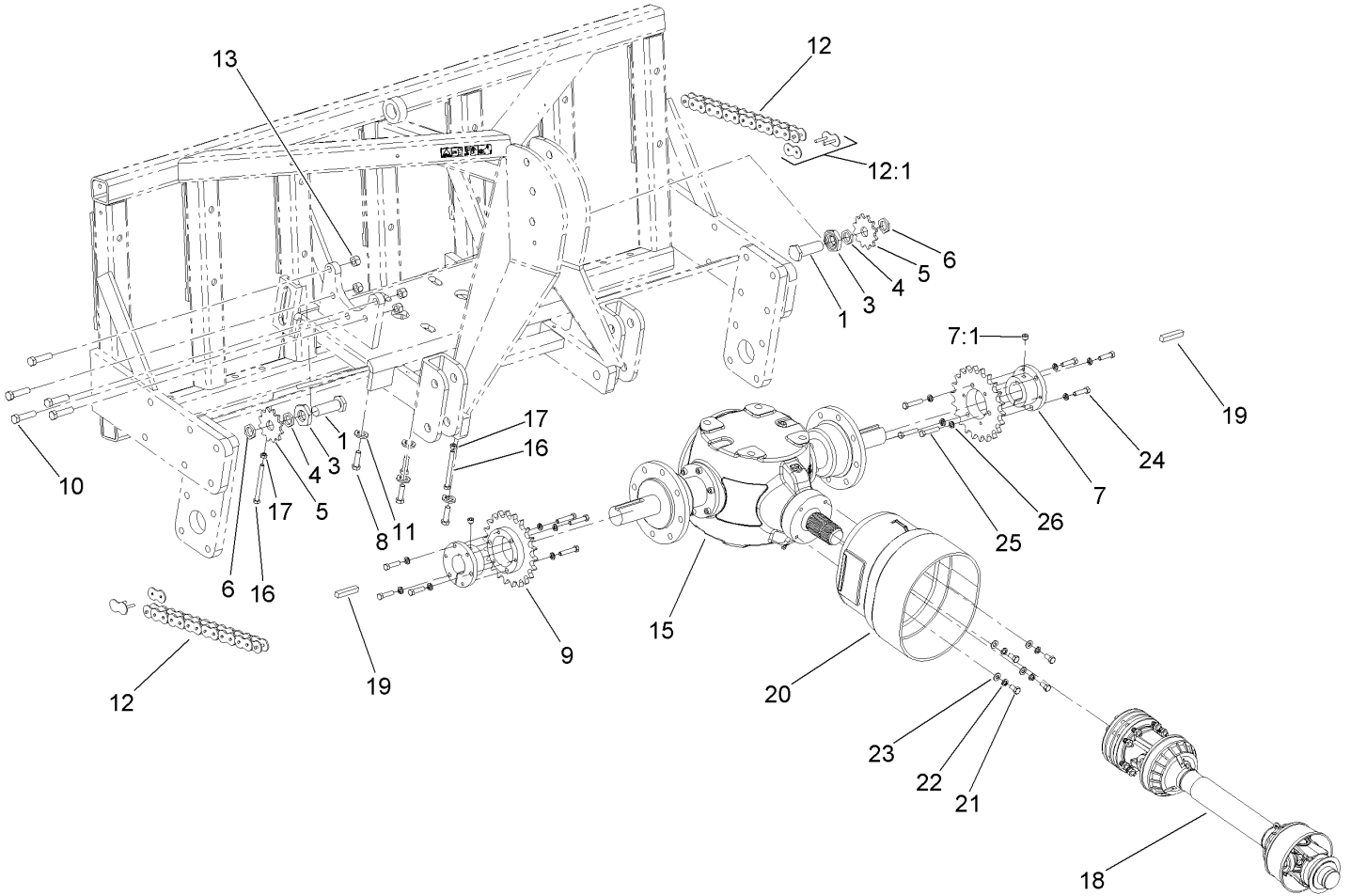
Part descriptions in this catalog may include the following abbreviations.

| | |
|--|--|
| AR. as required | HWHTF. hex washer head thread forming |
| ASM. assembly | HYD. hydraulic |
| BBC. blade brake clutch | LH. left hand |
| CARR. carriage | NI. nylon insert |
| CCW. counter clock wise | NPTF. national pipe thread fine |
| CW. clockwise | PFH. phillips flat head |
| DEG. degrees | PPH. phillips pan head |
| ECM. electronic control module | PPHTF. phillips pan head thread forming |
| EXT. external | PRH. phillips round head |
| FH. flat head | PTH. phillips truss head |
| GA. gauge | PTO. power-take-off |
| HD. heavy-duty | RH. right hand |
| HF. hex flange | ROPS. roll-over protection system |
| HH. hex head | SFH. slotted fillister head |
| HHF. hex head flange | SHH. slotted hex head |
| HHFTF. hex head flange thread forming | SHWH. slotted hex washer head |
| HJ. hex jam | SPH. slotted pan head |
| HLH. hex lag head | SQH. square head |
| HOC. height-of-cut | SRH. slotted round head |
| HSBH. hex socket button head | STD. standard |
| HSFH. hex socket flat head | TAP. self tapping |
| HSH. hex socket head | TTH. torx truss head |
| HWH. hex washer head | |

Footnotes

❶ Not illustrated

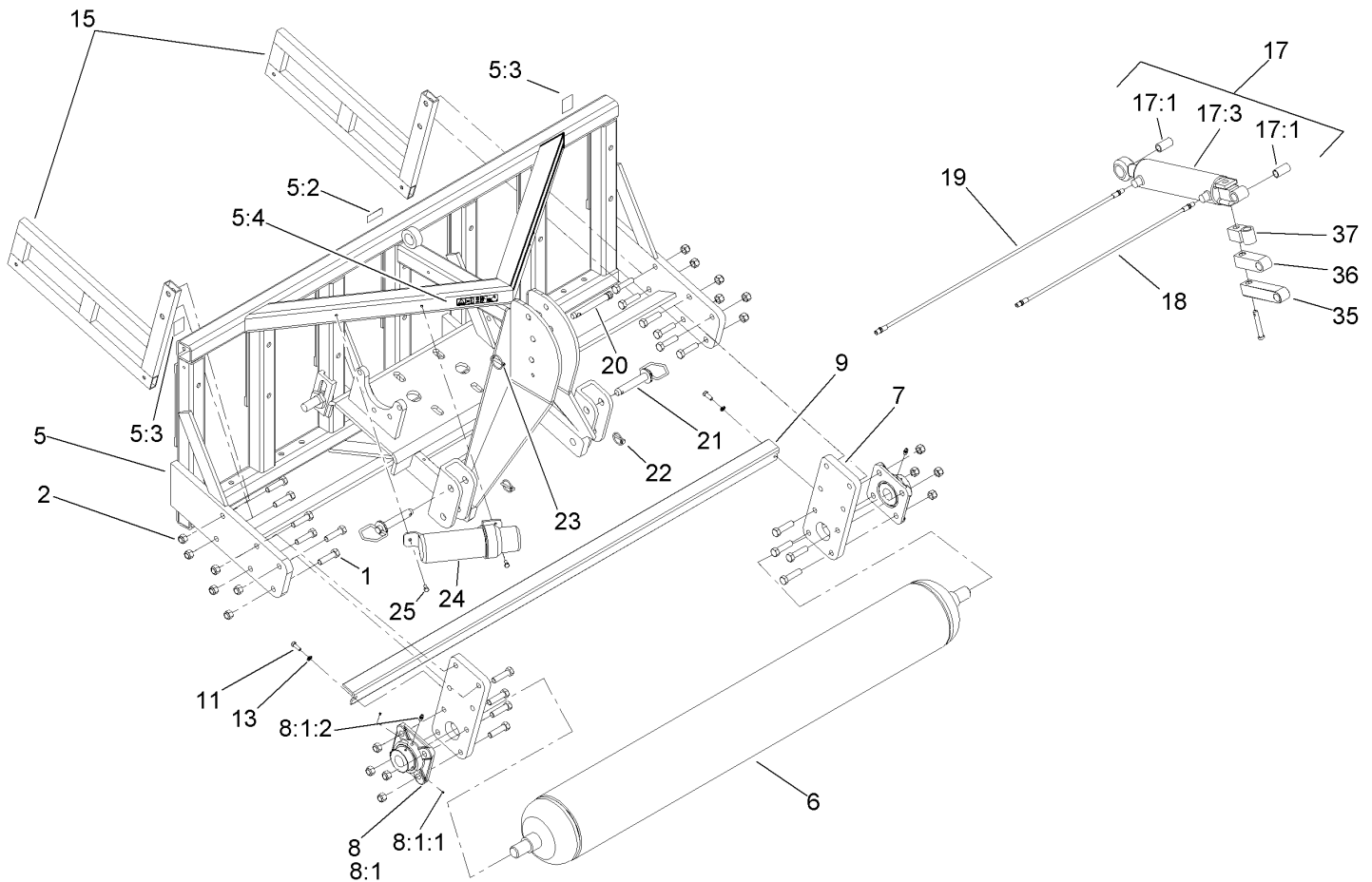
❷ Not serviced separately



Drive Assembly

| Ref | Part No. | Qty. | Description |
|------|-----------|------|---------------------------|
| 1 | SG584100 | 2 | Screw-HH Special |
| 3 | SG564100 | 2 | Nut-Hex, Jam |
| 4 | SG571450 | 2 | Nut-Hex, Jam |
| 5 | SG511280 | 2 | Sprocket-Idler |
| 6 | SG571100 | 2 | Nut-Lock |
| 7 | SG550177 | 2 | Hub-Sprocket |
| 7:1 | 3246-4 | 1 | Screw-Set |
| 8 | 33119-040 | 4 | Screw-HH |
| 9 | SG510522 | 2 | Sprocket-22 Tooth, 6 Bolt |
| 10 | SG562562 | 10 | Screw-HH |
| 11 | 100-7607 | 4 | Washer-Lock |
| 12 | SG580148 | 2 | Chain-O-Ring |
| 12:1 | SG581081 | 1 | Link-Master, O-Ring |
| 13 | 99-4371 | 10 | Nut-Lock |
| 15 | SG506000 | 1 | Gearbox ASM |
| 16 | SG584300 | 2 | Screw-HH |
| 17 | 3217-7 | 2 | Nut-Hex |
| 18 | SG526016 | 1 | PTO #6 |
| 19 | SG555500 | 2 | Key-Square |
| 20 | SG4171401 | 1 | Cone-Shaft, Lg |
| 21 | 33115-020 | 4 | Screw-HH |
| 22 | 48-9590 | 4 | Washer-Lock |
| 23 | 3256-24 | 4 | Washer-Flat |
| 24 | 323-43 | 6 | Screw-HH |

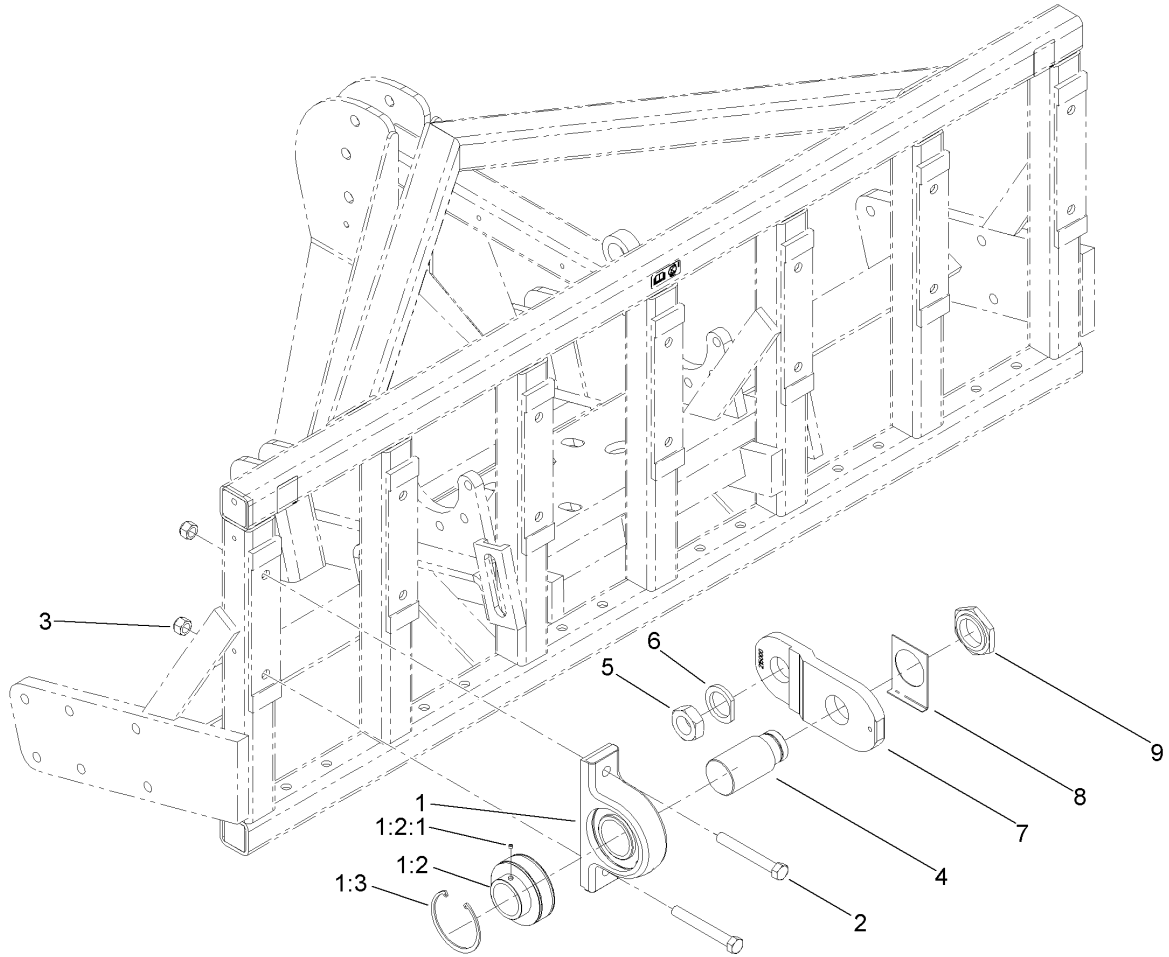
| Ref | Part No. | Qty. | Description |
|-----|----------|------|-------------|
| 25 | 323-32 | 6 | Screw-HH |
| 26 | 3253-21 | 12 | Washer-Lock |



Frame and Roller Assembly

| Ref | Part No. | Qty. | Description |
|---------|-------------|------|----------------------|
| 1 | 3214-9 | 20 | Screw-HH |
| 2 | 3296-41 | 20 | Nut-Lock NI |
| 5 | 117-7104 | 1 | Frame ASM |
| 5:2 | 117-7052 | 1 | Decal-No Oil |
| 5:3 | 100-3612 | 2 | Decal-Warning |
| 5:4 | 110-4668 | 1 | Decal-Warning, PTO |
| 6 | SG616061-03 | 1 | Roller-Main |
| 7 | SG625048-01 | 2 | Bar-Roller, Vertical |
| 8 | SG631150-03 | 2 | Bearing-Roller |
| ②8:1 | | 1 | Bearing-Flange |
| 8:1:1 | 106-9662 | 2 | Screw-Set, HSH |
| 8:1:2 | 302-19 | 1 | Fitting-Grease |
| 9 | SG616725-03 | 1 | Bar-Scraper |
| 11 | 323-6 | 2 | Screw-HH |
| 13 | 3253-21 | 2 | Washer-Lock |
| 15 | SG785150-03 | 2 | Stand-Storage |
| 17 | SG715010 | 1 | HYD Cylinder ASM |
| 17:1 | SG555013 | 2 | Bushing |
| ②17:3 | | 1 | Cylinder-Hydraulic |
| ①17:3:1 | 117-7175 | 1 | Seal Kit |

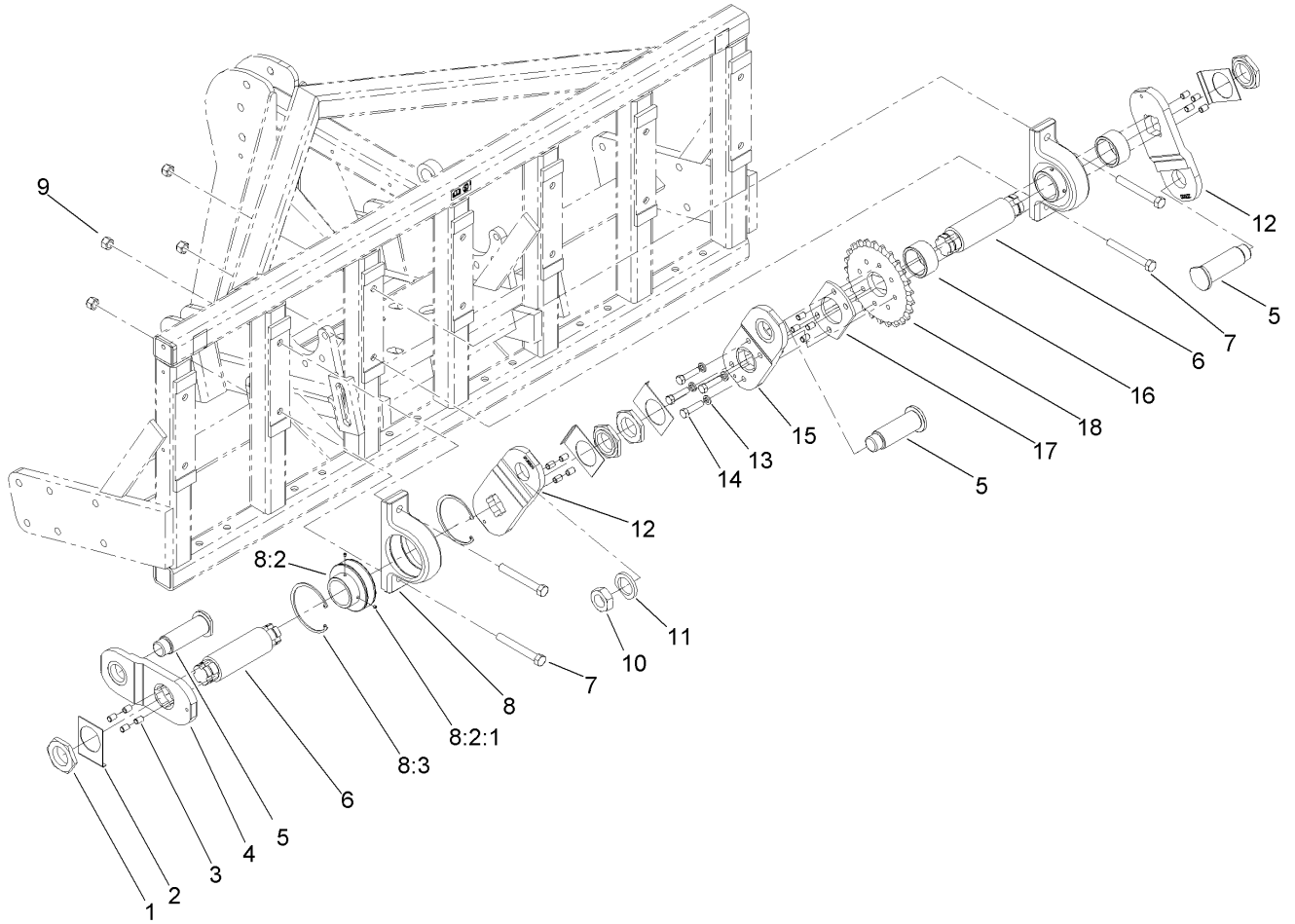
| Ref | Part No. | Qty. | Description |
|-----|-------------|------|----------------------------|
| 18 | SG795245 | 1 | Hose ASM (Short) |
| 19 | SG795250 | 1 | Hose ASM (Long) |
| 20 | SG715450 | 1 | Pin-Link, Top |
| 21 | SG715875 | 2 | Pin-Hitch |
| 22 | 92-1298 | 2 | Pin-Lynch |
| 23 | 100-5389 | 1 | Pin-Lynch |
| 24 | SG999018 | 1 | Canister-Manual, Operators |
| 25 | 322-3 | 2 | Screw-HH |
| 35 | SG795551-03 | 1 | Extension-Adapter 5.50" |
| 36 | SG795554-03 | 1 | Extension-Adapter 3.50" |
| 37 | 117-7124-03 | 1 | Mount-Adapter, 90 DEG |



LH Outside Crankshaft Assembly

| Ref | Part No. | Qty. | Description |
|-------|-------------|------|-----------------------|
| 1 | SG231040 | 1 | Brg Housing ASM |
| ② 1:2 | | 1 | Bearing-Ball |
| 1:2:1 | 99-0195 | 2 | Screw-Set, HSH |
| 1:3 | SG232433 | 2 | Ring-Snap |
| 2 | SG278625 | 2 | Screw-HH |
| 3 | 3296-41 | 2 | Nut-Lock NI |
| 4 | SG211557 | 1 | Shaft-Stub, Outside |
| 5 | SG361375 | 1 | Nut-Hex Jam |
| 6 | SG241753 | 1 | Washer-Crank, Clipped |
| 7 | SG215000-03 | 1 | Arm-Crank |
| 8 | SG281240 | 1 | Plate-Locking |
| 9 | SG261535 | 1 | Nut-Hex |

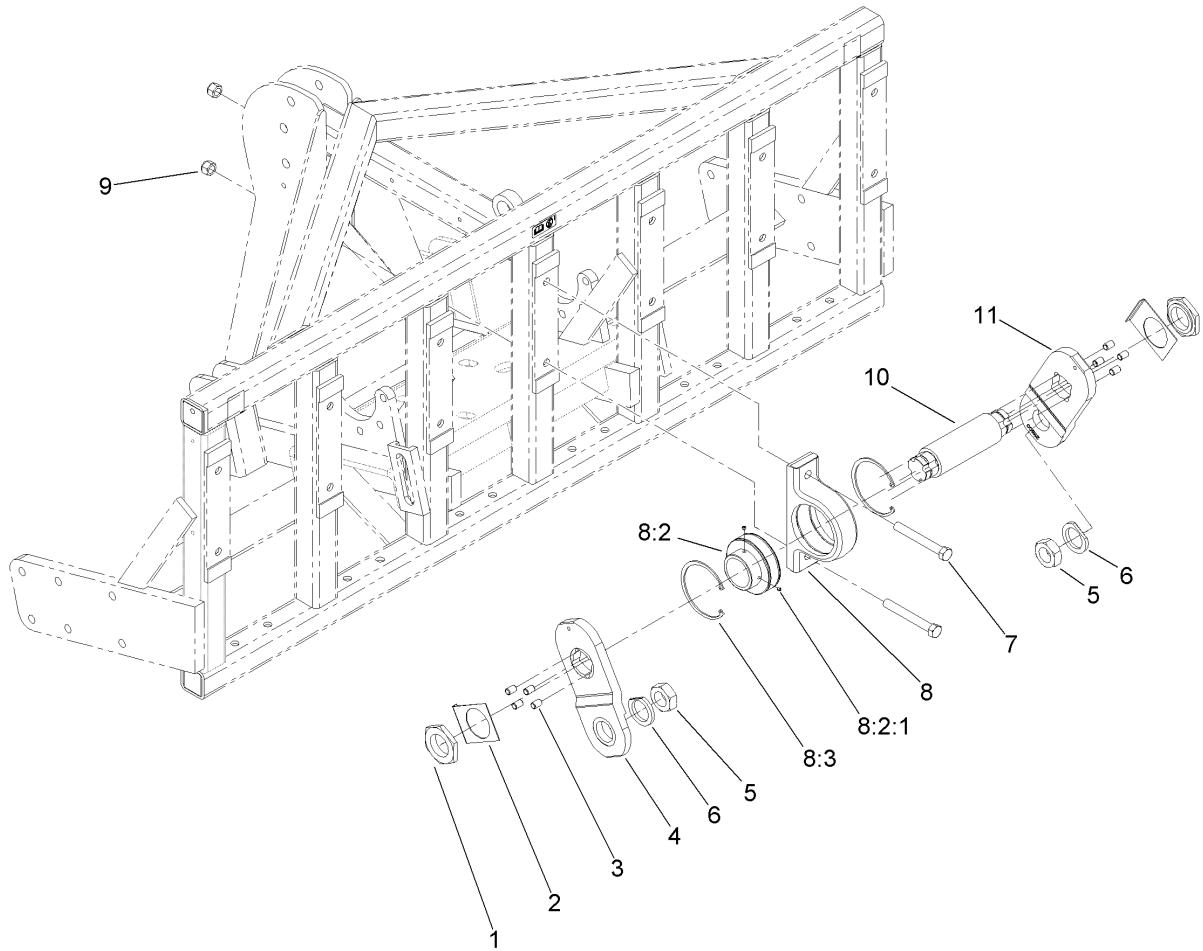
| | | | |
|--|--|--|--|
| | | | |
|--|--|--|--|



LH Crankshaft Assembly

| Ref | Part No. | Qty. | Description |
|-------|-------------|------|----------------------------|
| 1 | SG261535 | 4 | Nut-Hex |
| 2 | SG281240 | 4 | Plate-Locking |
| 3 | SG250875 | 16 | Pin-Dowel |
| 4 | SG210500-03 | 1 | Arm-Crank (1/2" Drive) |
| 5 | SG315750 | 3 | Pin-Crank |
| 6 | SG216500 | 2 | Shaft-Crank |
| 7 | SG278625 | 4 | Screw-HH |
| 8 | SG231040 | 2 | Brg Housing ASM |
| 8:2 | | 1 | Bearing-Ball |
| 8:2:1 | 99-0195 | 2 | Screw-Set, HSH |
| 8:3 | SG232433 | 2 | Ring-Snap |
| 9 | 3296-41 | 4 | Nut-Lock NI |
| 10 | SG361375 | 1 | Nut-Hex Jam |
| 11 | SG241753 | 1 | Washer-Crank, Clipped |
| 12 | SG212500-03 | 2 | Arm-Crank, LH (1/2" Drive) |
| 13 | 3253-7 | 4 | Washer-Lock |
| 14 | SG271517 | 4 | Screw-HH |
| 15 | SG200500-03 | 1 | Arm-Crank (1/2" Drive) |
| 16 | SG234149 | 2 | Spacer-Tube |
| 17 | SG243300 | 1 | Spacer-Sprocket |
| 18 | SG214025 | 1 | Sprocket-Bore, Plain |

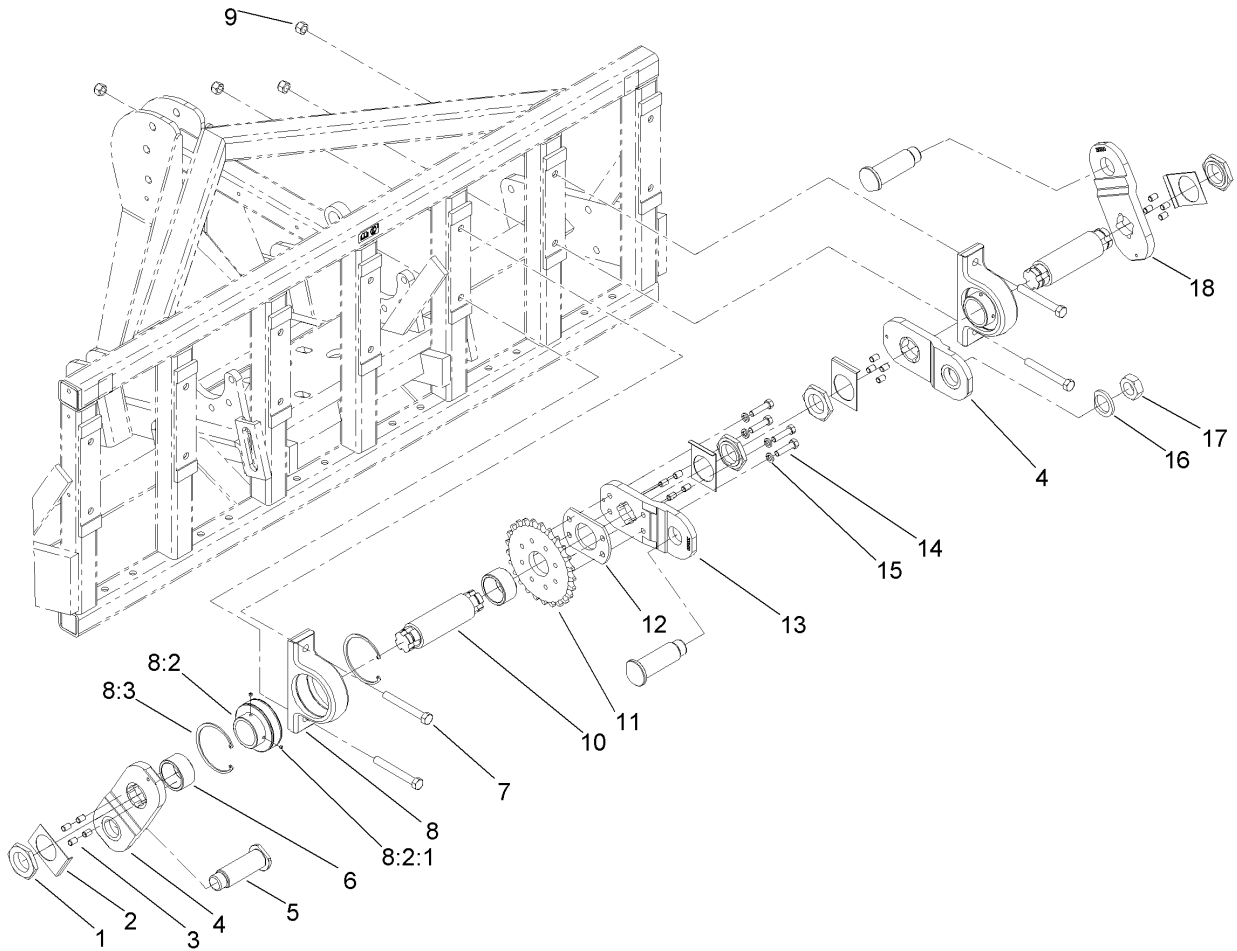
| | | | |
|--|--|--|--|
| | | | |
| | | | |
| | | | |
| | | | |



Center Crankshaft Assembly

| Ref | Part No. | Qty. | Description |
|-------|-------------|------|----------------------------|
| 1 | SG261535 | 2 | Nut-Hex |
| 2 | SG281240 | 2 | Plate-Locking |
| 3 | SG250875 | 8 | Pin-Dowel |
| 4 | SG210500-03 | 1 | Arm-Crank (1/2" Drive) |
| 5 | SG361375 | 2 | Nut-Hex Jam |
| 6 | SG241753 | 2 | Washer-Crank, Clipped |
| 7 | SG278625 | 2 | Screw-HH |
| 8 | SG231040 | 1 | Brg Housing ASM |
| 8:2 | | 1 | Bearing-Ball |
| 8:2:1 | 99-0195 | 2 | Screw-Set, HSH |
| 8:3 | SG232433 | 2 | Ring-Snap |
| 9 | 3296-41 | 2 | Nut-Lock NI |
| 10 | SG216500 | 1 | Shaft-Crank |
| 11 | SG211500-03 | 1 | Arm-Crank, RH (1/2" Drive) |

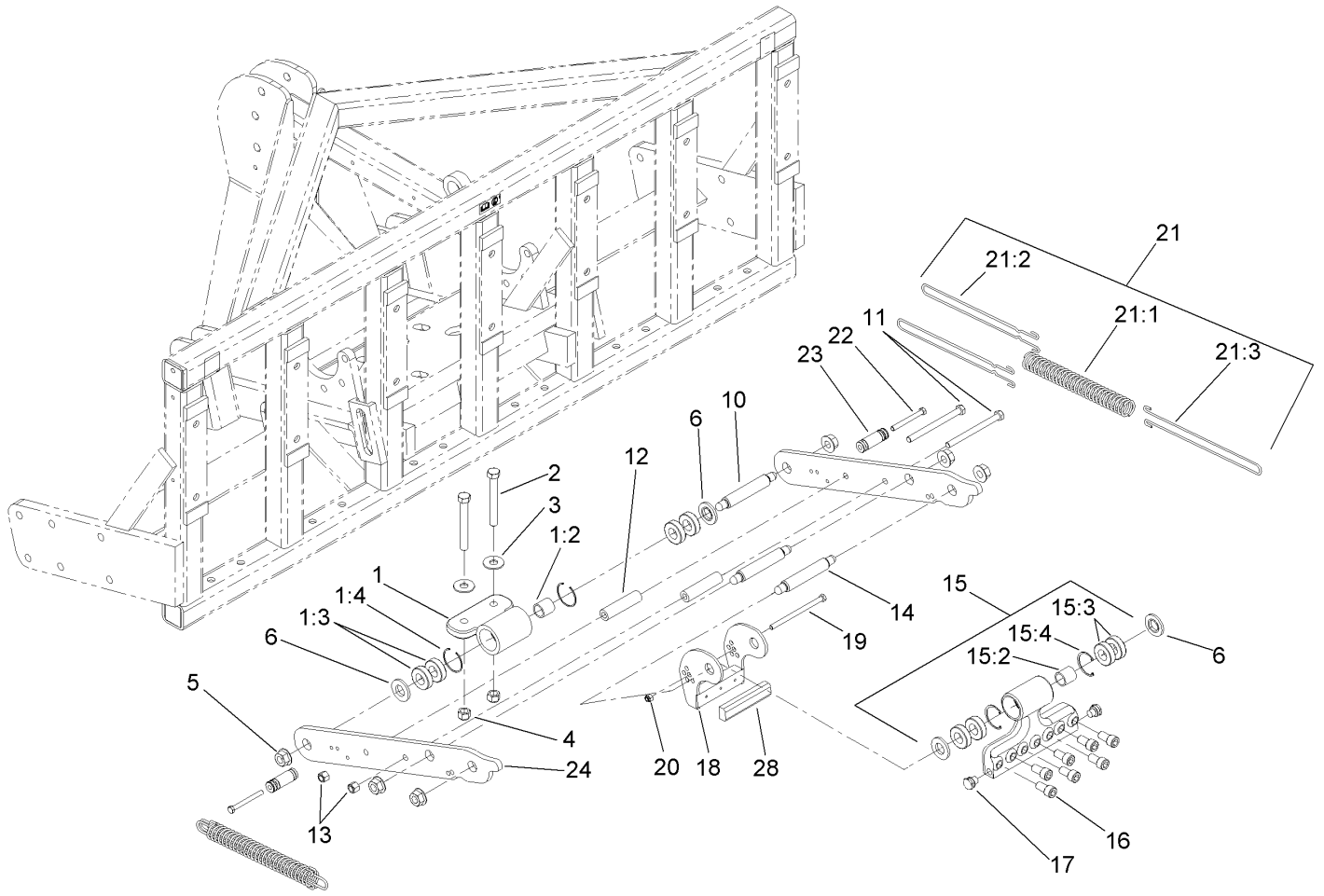
| | | | |
|--|--|--|--|
| | | | |
|--|--|--|--|



RH Crankshaft Assembly

| Ref | Part No. | Qty. | Description |
|-------|-------------|------|----------------------------|
| 1 | SG261535 | 4 | Nut-Hex |
| 2 | SG281240 | 4 | Plate-Locking |
| 3 | SG250875 | 16 | Pin-Dowel |
| 4 | SG211500-03 | 2 | Arm-Crank, RH (1/2" Drive) |
| 5 | SG315750 | 3 | Pin-Crank |
| 6 | SG234149 | 2 | Spacer-Tube |
| 7 | SG278625 | 4 | Screw-HH |
| 8 | SG231040 | 2 | Brg Housing ASM |
| 8:2 | | 1 | Bearing-Ball |
| 8:2:1 | 99-0195 | 2 | Screw-Set, HSH |
| 8:3 | SG232433 | 2 | Ring-Snap |
| 9 | 3296-41 | 4 | Nut-Lock NI |
| 10 | SG216500 | 2 | Shaft-Crank |
| 11 | SG214025 | 1 | Sprocket-Bore, Plain |
| 12 | SG243300 | 1 | Spacer-Sprocket |
| 13 | SG200500-03 | 1 | Arm-Crank (1/2" Drive) |
| 14 | SG271517 | 4 | Screw-HH |
| 15 | 3253-7 | 4 | Washer-Lock |
| 16 | SG241753 | 1 | Washer-Crank, Clipped |
| 17 | SG361675 | 1 | Pin-Crank, Connecting Rod |
| 18 | SG210500-03 | 1 | Arm-Crank (1/2" Drive) |

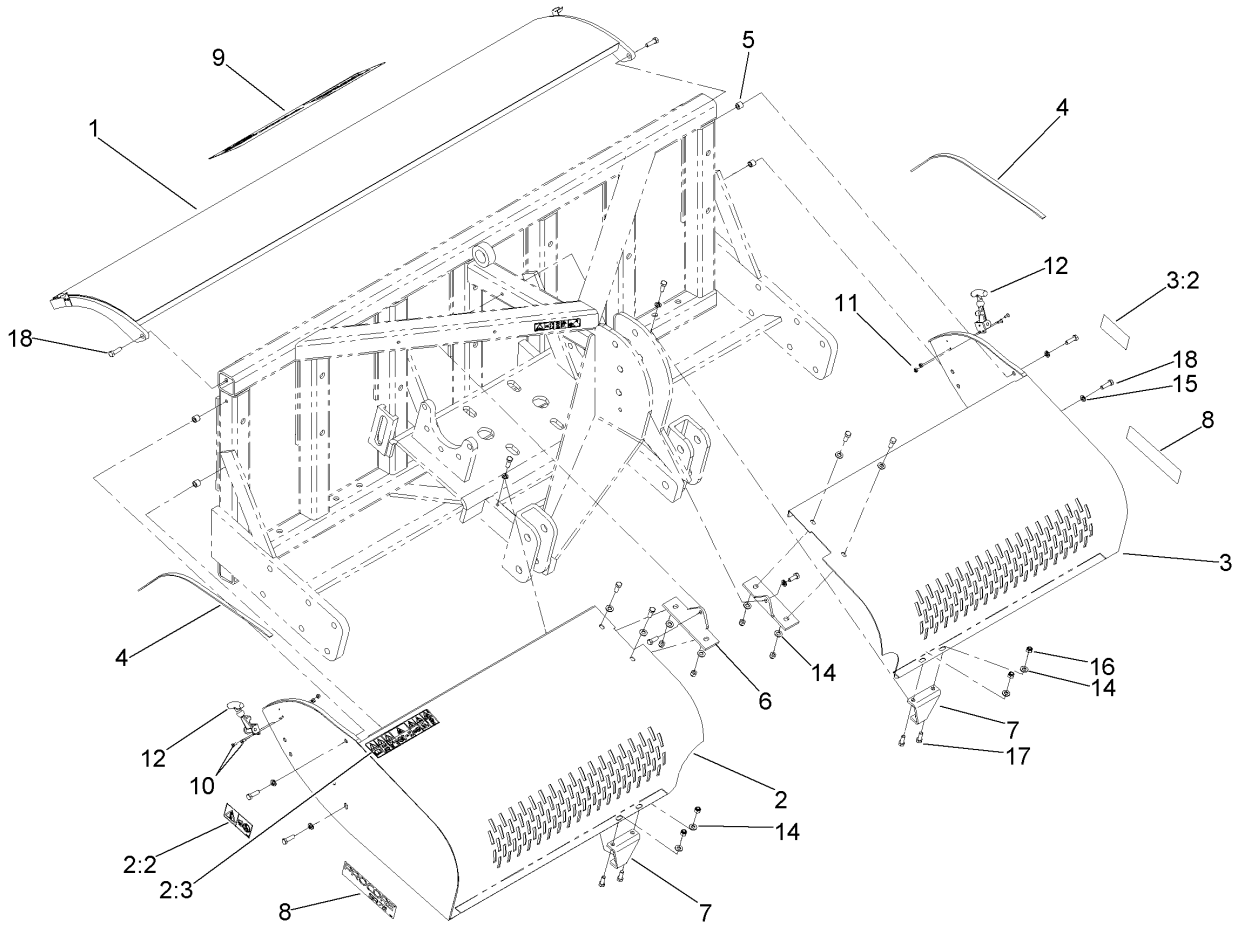
| | | | |
|--|--|--|--|
| | | | |
| | | | |
| | | | |
| | | | |



Lower Arm and Hinge Assembly

| Ref | Part No. | Qty. | Description |
|------|-------------|------|------------------------|
| 1 | SG142000 | 6 | Hinge ASM |
| 1:2 | SG410290 | 1 | Bushing-Inner |
| 1:3 | SG431012 | 4 | Bearing-Ball |
| 1:4 | 32120-65 | 2 | Ring-Snap |
| 2 | SG471645 | 12 | Bolt-Hinge |
| 3 | 3256-7 | 12 | Washer-Flat |
| 4 | 3296-41 | 12 | Nut-Lock NI |
| 5 | 32128-53 | 36 | Nut-HF |
| 6 | SG441240 | 24 | Bushing-Outer |
| 10 | SG410500 | 12 | Pin-Wrist, Short |
| 11 | 325-20 | 12 | Screw-HH |
| 12 | SG434118 | 12 | Spacer-Arm, Linkage |
| 13 | 3296-23 | 12 | Nut-Lock, NI |
| 14 | SG410437 | 6 | Pin-Wrist, Head |
| 15 | SG145100 | 6 | Tine Head ASM |
| 15:2 | SG410290 | 1 | Bushing-Inner |
| 15:3 | SG431012 | 4 | Bearing-Ball |
| 15:4 | 32120-65 | 2 | Ring-Snap |
| 16 | SG471620 | 42 | Head-Tine, Bolt (Long) |
| 17 | SG483125 | 12 | Holder-Spring, Front |
| 18 | SG492000-03 | 6 | Bracket-Camber |
| 19 | 323-22 | 6 | Screw-HH |
| 20 | 3296-39 | 6 | Nut-Lock, NI |

| Ref | Part No. | Qty. | Description |
|------|-------------|------|------------------------|
| 21 | SG148160 | 12 | Spring ASM |
| 21:1 | SG481512 | 1 | Spring-Compression |
| 21:2 | SG482016 | 2 | Wire-Bar, Draw |
| 21:3 | SG482017 | 1 | Wire-Bar, Draw |
| 22 | 323-15 | 12 | Screw-HH |
| 23 | SG484351 | 12 | Post-Rear, Spring |
| 24 | SG434117-03 | 12 | Plate-Arm, Linkage |
| 25 | SG885222 | 1 | Wrench-Allen, 1/2 Inch |
| 28 | SG491000 | 6 | Pad-Bumper |



Cover Assembly

| Ref | Part No. | Qty. | Description |
|-----|-------------|------|----------------------------|
| 1 | SG651066-03 | 1 | Back Cover ASM |
| 2 | 117-7108 | 1 | RH Screen ASM |
| 2:2 | 117-7051 | 1 | Decal-Danger, Keep Away Ce |
| 2:3 | 117-7050 | 1 | Decal-Warning, Ce |
| 3 | 117-7109 | 1 | LH Screen ASM |
| 3:2 | 117-7051 | 1 | Decal-Danger, Keep Away Ce |
| 4 | SG483257 | 2 | Strip-Foam |
| 5 | SG555052 | 4 | Spacer |
| 6 | SG678915-03 | 2 | Clip-Screen, Top |
| 7 | SG616730-03 | 2 | Bracket-Screen, Front |
| 8 | 117-7087 | 2 | Decal |
| 9 | 117-7058 | 1 | Decal |
| 10 | 3274-29 | 4 | Screw-HSFH |
| 11 | 3296-2 | 4 | Nut-Lock, NI |
| 12 | SG650006 | 2 | Strap-Hood |
| 14 | 3256-24 | 12 | Washer-Flat |
| 15 | 3253-21 | 8 | Washer-Lock |
| 16 | 3296-39 | 8 | Nut-Lock, NI |
| 17 | 323-6 | 8 | Screw-HH |
| 18 | 323-7 | 8 | Screw-HH |

| | | | |
|--|--|--|--|
| | | | |
| | | | |
| | | | |
| | | | |

NOTES

NOTES

NOTES

