



Differential Identification and Repair

Product: Flex 18 and 21

March 30, 2009

Affected Units:	Models:	Serial Numbers:
Greensmaster Flex 18	04018	260000101-280099999
Greensmaster Flex 18	04019	290000101-290099999
Greensmaster Flex 21	04021	210000101-260099999
Greensmaster Flex 21	04022	260000101-290099999
Greensmaster Flex 21	04024	290000101-290099999
Greensmaster Flex 21	04025	290000101-290099999
Greensmaster Flex 18	04030	280000101-280099999
Greensmaster Flex 21	04031	280000101-280099999

Situation: Information to identify for repair variations of the Flex differential assembly.

Two suppliers have made differential assemblies for the Flex Greensmowers since model introduction. Parts contained in these assemblies are unique to the manufacturer and require careful inspection prior to ordering repair parts. Identification of a particular assembly cannot be made solely on machine serial information; units may have been later repaired with service assemblies that may be unlike the original differential.

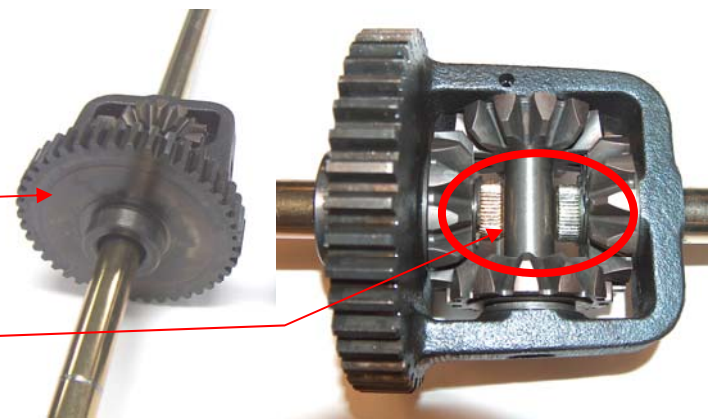
Correction: This document identifies the visual and sub-assembly part number differences.

Differential Assembly (99-2038 & 115-1650)

In production from 2001 thru 2005 & 2008 thru 2009.

Visual Characteristics:

- Smooth face on the large gear
- RH and LH shafts are almost touching the cross shaft.
- Fine Spline on the axle shafts.





Differential Identification and Repair

Product: Flex 18 and 21

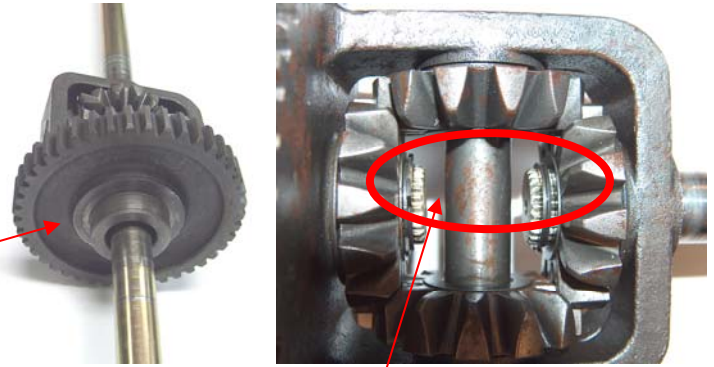
March 30, 2009

Differential Assembly (108-8601 & 110-2243)

In production from 2005 thru 2008

Visual Characteristics:

- Recessed (approx .250" or 7 mm) on the large gear face
- .250" to .500" (7 to 13 mm) gap between cross shaft and RH and LH shafts.
- Coarse Spline on axle shafts.

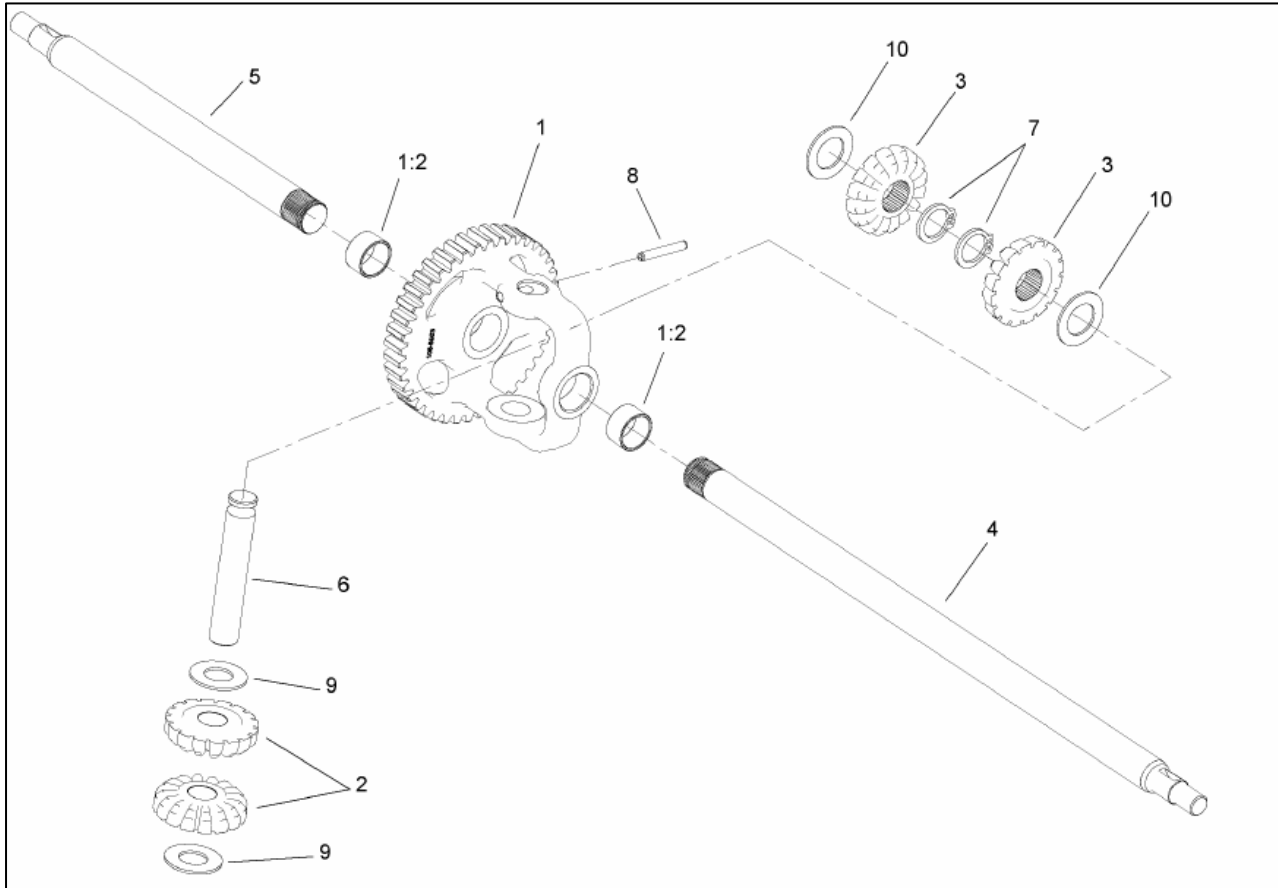




Differential Identification and Repair

Product: Flex 18 and 21

March 30, 2009



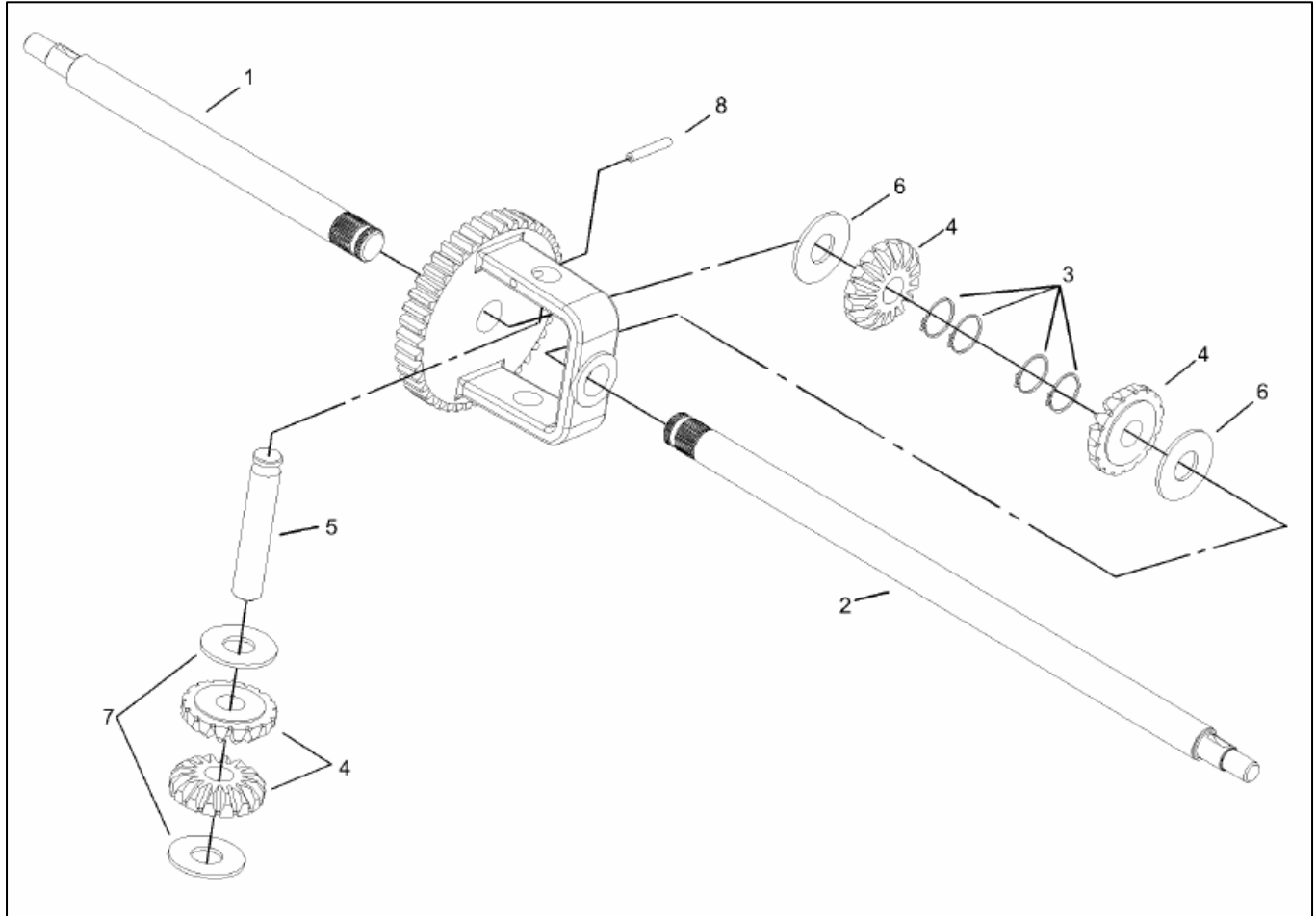
Item Number	Part Description	Flex 18	Flex 21
		110-2243	108-8601
	Differential Assembly		
1	Differential Housing Assembly	108-8605	108-8605
1:2	Bushing	108-8604	108-8604
2	Gear-Bevel, Driven	108-8606	108-8606
3	Gear-Bevel, Drive	108-8607	108-8607
4	Axle-Long	110-2244	108-8609
5	Axle-Short	110-2245	108-8610
6	Shaft-Gear/Pin Drive	108-8611	108-8611
7	Ring-Retaining	32120-93	32120-93
8	Pin-Roll, Slotted/Pin-Roll	32121-6	32121-6
9	Washer	108-8612	108-8612
10	Washer	108-8613	108-8613



Differential Identification and Repair

Product: Flex 18 and 21

March 30, 2009



Item Number	Part Description	Flex 18	Flex 21
		115-1650	99-2038
1	Axle-Short	115-1719	105-2403
2	Axle-Long	115-1721	105-2402
3	Ring-Retaining	95-5746	95-5746
4	Gear Set-Differential	105-2405	105-2405
5	Shaft-Gear/Pin Drive	105-2404	105-2404
6	Washer	95-5745	95-5745
7	Washer	105-2406	105-2406
8	Pin-Roll, Slotted/Pin-Roll	32121-79	32121-79