



## High-Speed Trencher Head Compact Utility Loaders

Model No. 22474 - 290000001 and up.

### Parts Catalog

---

#### Ordering Replacement Parts

To order replacement parts, please supply the part number, the quantity, and the description of each part desired.

#### Understanding Reference Numbers

Each identified part in an illustration has a reference number. The reference number for a part also appears in the parts list, along with other information about the part.

This catalog uses two special reference number formats, one to indicate parts in a service assembly and another to indicate the quantity of a given part in an illustration.

#### Service Assembly Reference Numbers

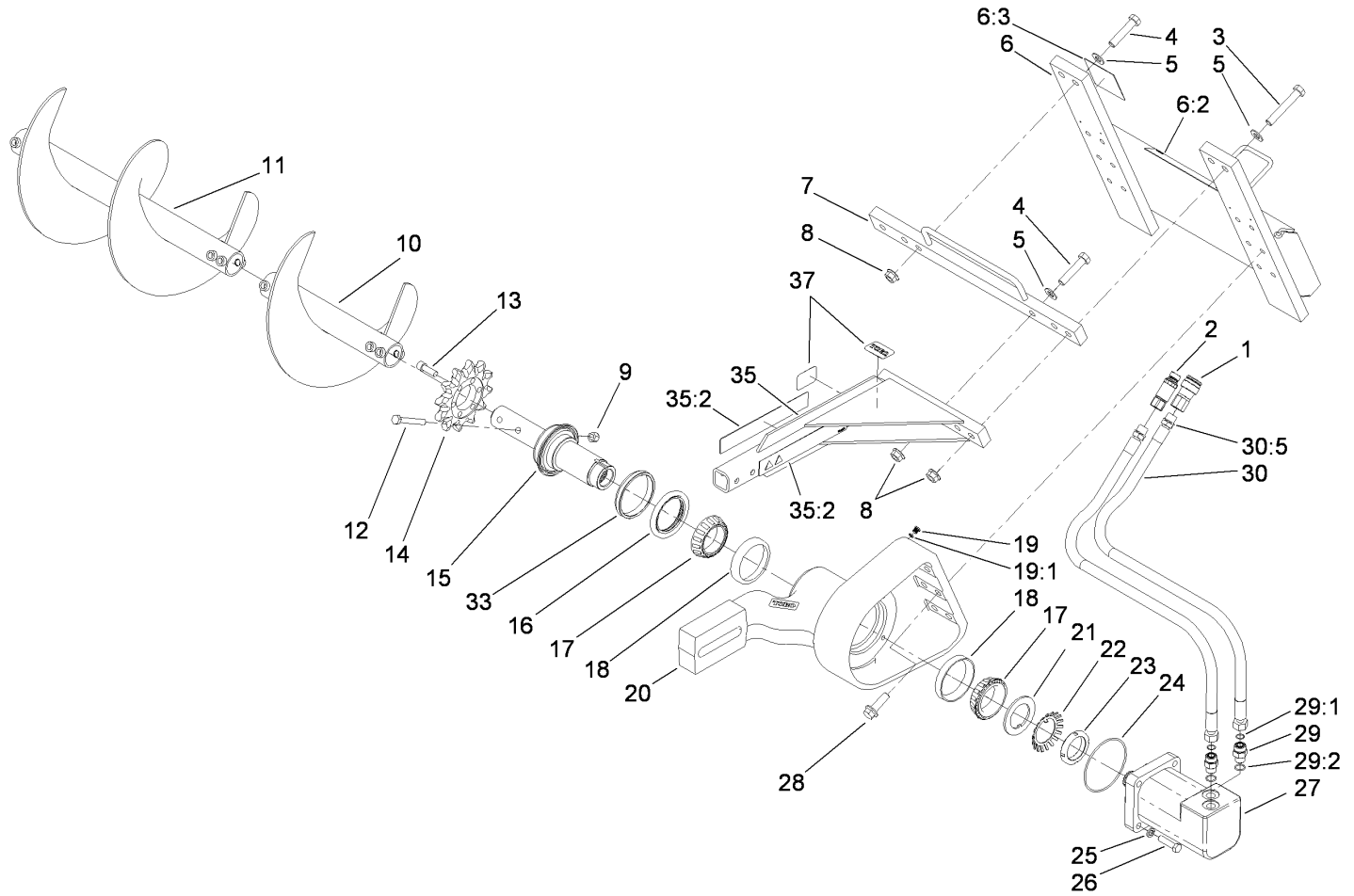
Parts in service assemblies have reference numbers in the form a:b. The a represents the reference number of the entire service assembly and the b represents a sequential number unique to each part within the service assembly.

For example, a wheel assembly might be identified by reference number 6, the tire by 6:1, the valve by 6:2, and the wheel by 6:3. When you order the assembly identified by reference number 6, you receive all parts identified by reference numbers 6:1, 6:2, and 6:3. However, you may also order any part individually. Reference numbers of this type appear in illustrations and in part lists.

#### Reference Numbers Indicating Quantity

In an illustration, if a reference number indicates more than one part, the reference number has the form nX y. The n represents the quantity of the part, the X is the multiplication symbol, and the y represents the reference number.

For example, in an illustration, the reference number 2X 37 means that two of the parts identified by reference number 37 are indicated.



## High-Speed Trencher Head Assembly

Ref	Part No.	Qty.	Description
1	104-6134	1	Coupler-Face, Flush
2	100-4701	1	Nipple-Connect, Pressure
2:1	100-6120	1	Seal Kit (Not Illustrated)
3	104-5877	2	Screw-HH
4	104-5895	3	Screw-HH
5	3256-27	5	Washer-Flat
6	104-1938	1	Mount ASM
6:2	99-9952	1	Decal-Danger
6:3	99-9953	1	Decal-Danger
7	104-5894-03	1	Crossbar ASM
8	32128-50	5	Nut-Flange
9	3296-23	1	Nut-Lock, NI
10	104-5912-03	1	Auger ASM
11	117-3433-03	1	Auger ASM (Optional Equipment)
12	325-35	1	Screw-HH
13	3274-4	6	Screw-HSH
14	104-1964	1	Sprocket-Trencher
15	104-1969	1	Shaft-Trencher
16	104-1967	1	Seal-Shaft
17	104-1966	2	Cone-Bearing
18	104-1965	2	Cup-Bearing
19	353-990	1	Plug
19:1	237-78	1	O-Ring
20	104-1931-03	1	Mount-Boom

Ref	Part No.	Qty.	Description
21	104-1972	1	Washer-Tongued
22	104-5915	1	Lockwasher-Bearing
23	104-1973	1	Locknut-Bearing
24	104-1920	1	O-Ring
25	3253-7	4	Washer-Lock
26	325-8	4	Screw-HH
27	104-5701	1	Motor-HYD, High Speed
28	104-5870	6	Screw
29	340-7	2	Adapter
29:1	237-65	1	O-Ring
29:2	237-80	1	O-Ring
30	104-1932	2	Hose ASM
30:5	237-80	1	O-Ring
33	104-5935	1	Spacer
35	117-3444	1	Safety Rail ASM
35:2	99-9952	2	Decal-Danger
37	98-3206	2	Decal



