



Count on it.

Parts Catalog

ProCore® SR48 Aerator

Model No. 09920—Serial No. 310000001 and Up

Ordering Replacement Parts

To order replacement parts, please supply the part number, the quantity, and the description of each part desired.

Understanding Reference Numbers

Each identified part in an illustration has a reference number. The reference number for a part also appears in the parts list, along with other information about the part.

This catalog uses two special reference number formats, one to indicate parts in a service assembly and another to indicate the quantity of a given part in an illustration.

Service Assembly Reference Numbers

Parts in service assemblies have reference numbers in the form a:b. The a represents the reference number of the entire service assembly and the b represents a sequential number unique to each part within the service assembly.

For example, a wheel assembly might be identified by reference number 6, the tire by 6:1, the valve by 6:2, and the wheel by 6:3. When you order the assembly identified by reference number 6, you receive all parts identified by reference numbers 6:1, 6:2, and 6:3. However, you may also order any part individually. Reference numbers of this type appear in illustration and in parts lists.

Reference Numbers Indicating Quantity

In an illustration, if a reference number indicates more than one part, the reference number has the form nX y. The n represents the quantity of the part, the X is the multiplication symbol, and the y represents the reference number.

For example, in an illustration, the reference number 2X 37 means that two of the parts identified by reference number 37 are indicated.

List of Abbreviations

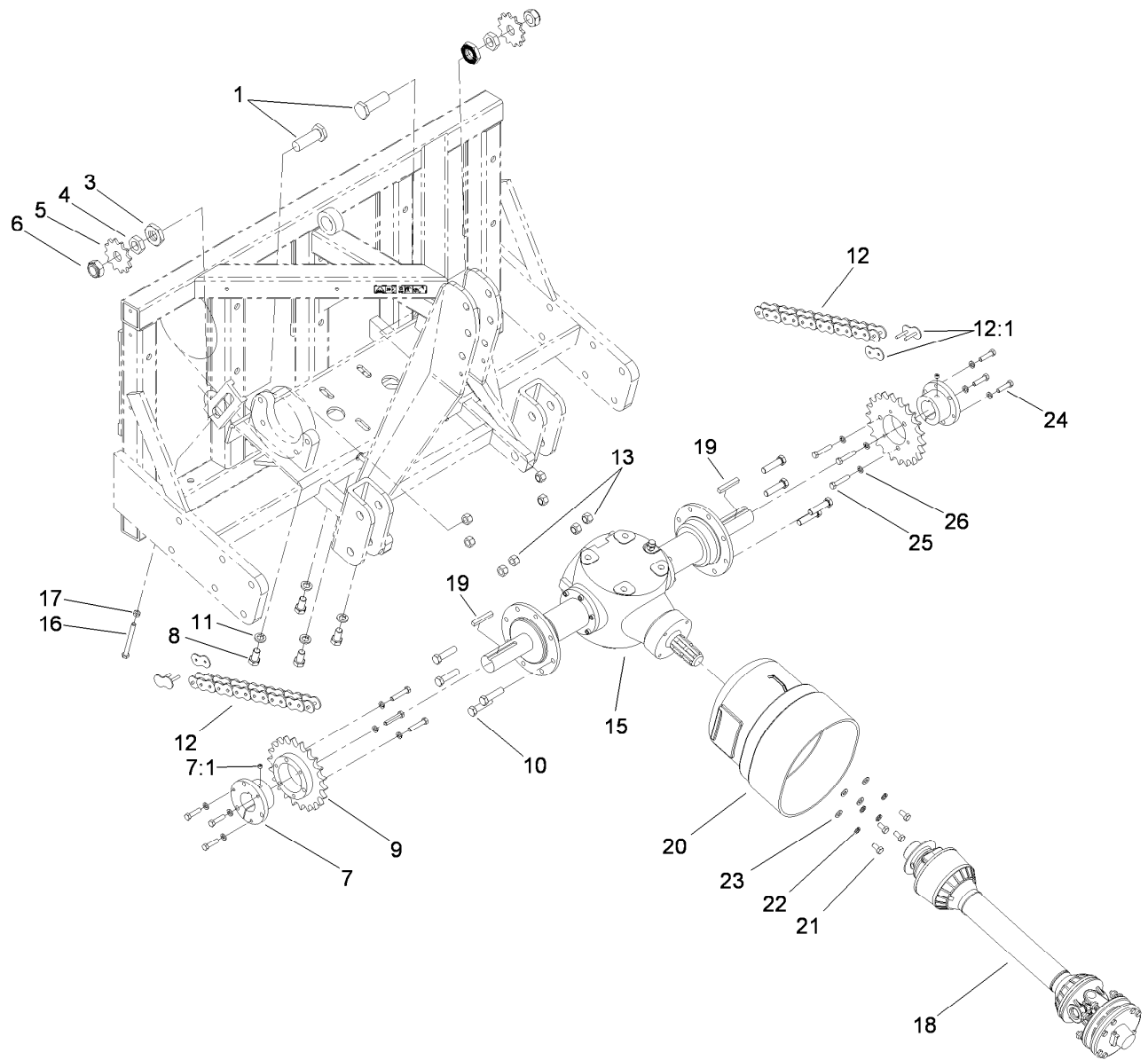
AR: as required
ASM: assembly
BBC: blade brake clutch
CARR: carriage
CCW: counter clock wise
CW: clockwise
DEG: degrees
ECM: electronic control module
EXT: external
FH: flat head
GA: gauge
HD: heavy-duty
HF: hex flange
HH: hex head
HHF: hex head flange
HHFTF: hex head flange thread forming
HJ: hex jam
HLH: hex lag head
HOC: height-of-cut

HSBH: hex socket button head
HSFH: hex socket flat head
HSH: hex socket head
HWH: hex washer head
HWHTF: hex washer head thread forming
HYD: hydraulic
LH: left hand
NI: nylon insert
NPTF: national pipe thread fine
PFH: phillips flat head
PPH: phillips pan head
PPHTF: phillips pan head thread forming
PRH: phillips round head
PTH: phillips truss head
PTO: power-take-off
RH: right hand
ROPS: roll-over protection system
RRB: rear roller brush

SFH: slotted fillister head
SHH: slotted hex head
SHWH: slotted hex washer head
SPH: slotted pan head
SQH: square head
SRH: slotted round head
STD: standard
TAP: self tapping
TTH: torx truss head

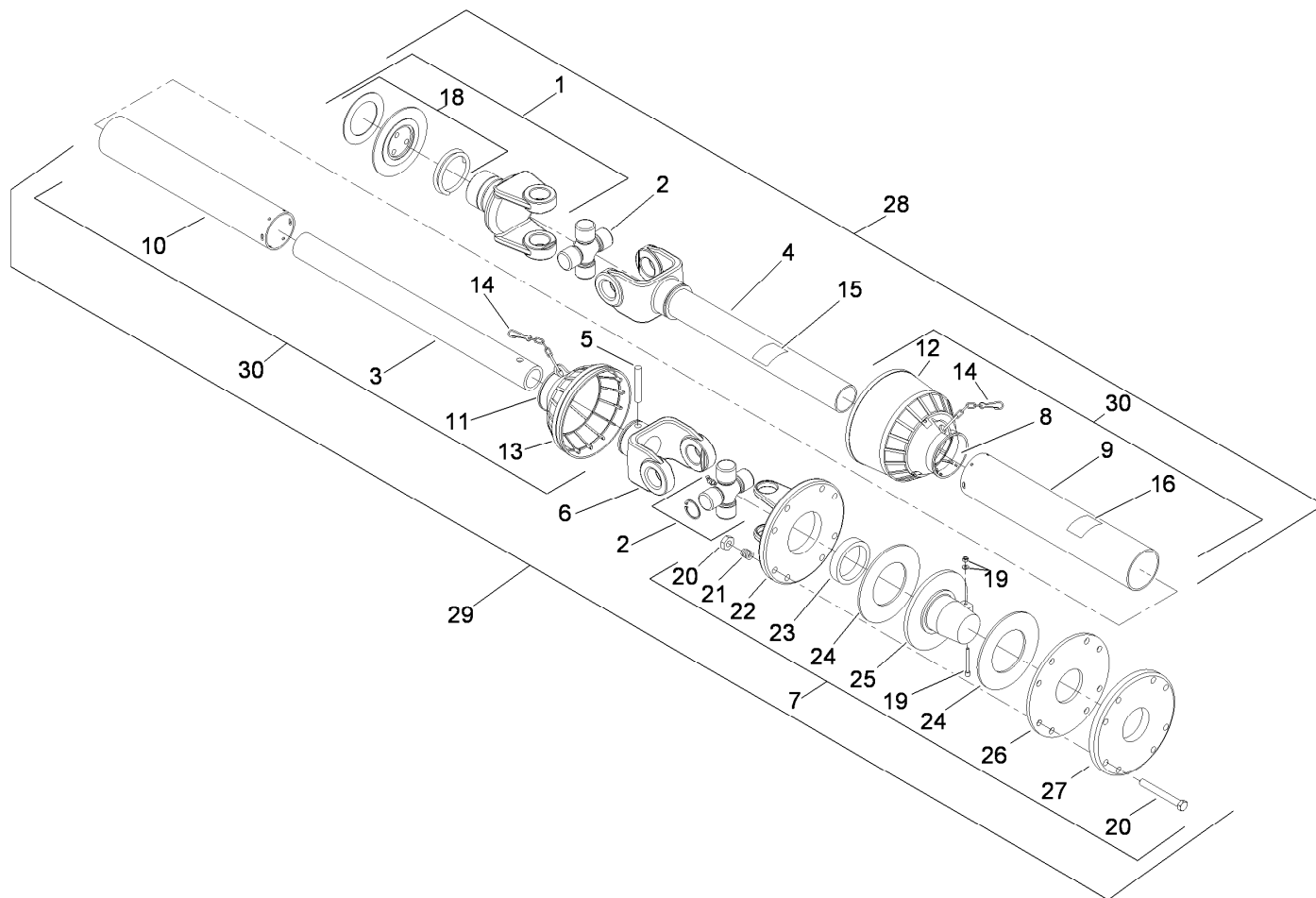
Contents

Drive Assembly	4
PTO Shaft Assembly No. SG528004	5
Frame and Roller Assembly	6
LH Outside Crankshaft Assembly	7
Left Crankshaft Assembly	8
Center Crankshaft Assembly	9
RH Crankshaft Assembly	10
RH Outside Crankshaft Assembly	11
Connecting Rod Assembly	12
Lower Arm and Hinge Assembly	13
Cover Assembly	14



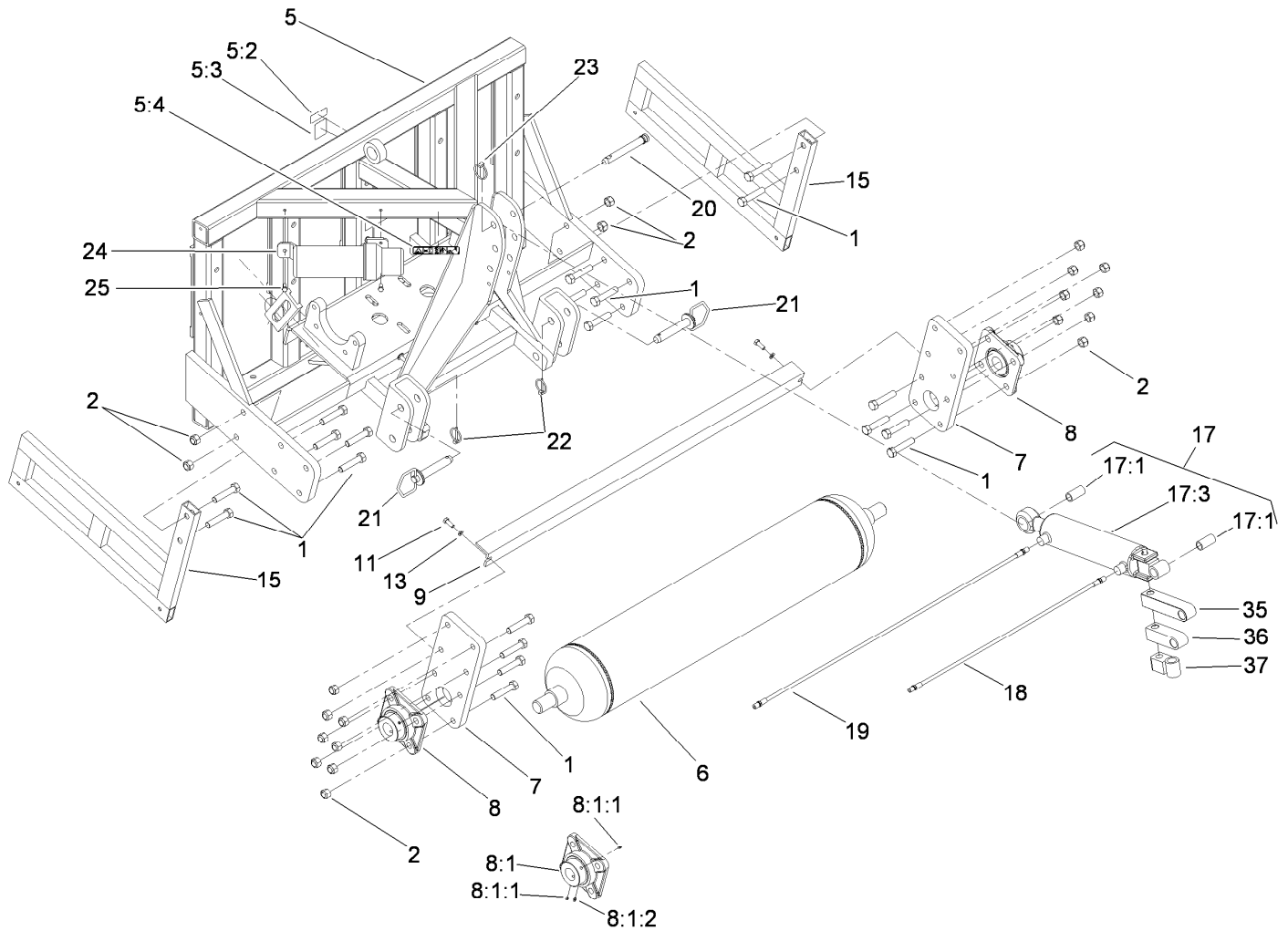
Drive Assembly

Ref.	Part Number	Qty.	Description	Ref.	Part Number	Qty.	Description
1	SG584100	2	Screw-HH Special	13	99-4371	8	Nut-Lock
3	SG564100	2	Nut-Hex, Jam	15	SG504000-03	1	Gearbox ASM
4	SG571450	2	Nut-Hex, Jam	16	SG584300	2	Screw-HH
5	SG511280	2	Sprocket-Idler	17	3217-7	2	Nut-Hex
6	SG571100	2	Nut-Lock	18	SG528004	1	Shaft-PTO
7	SG550176	2	Hub-Sprocket	19	80-6140	2	Key-Square
7:1	3246-4	1	Screw-Set	20	SG4170401	1	Cone-Shaft
8	33118-030	4	Screw-HH	21	33115-020	4	Screw-HH
9	SG510522	2	Sprocket-22 Tooth, 6 Bolt	22	48-9590	4	Washer-Lock
10	SG562562	8	Screw-HH	23	3256-24	4	Washer-Flat
11	3253-8	4	Washer-Lock	24	323-43	6	Screw-HH
12	SG580148	2	Chain-O-Ring	25	323-32	6	Screw-HH
12:1	SG581081	1	Link-Master, O-Ring	26	3253-21	12	Washer-Lock



PTO Shaft Assembly No. SG528004

<i>Ref.</i>	<i>Part Number</i>	<i>Qty.</i>	<i>Description</i>	<i>Ref.</i>	<i>Part Number</i>	<i>Qty.</i>	<i>Description</i>
1	119-3100	1	Yoke-Tractor Side	16	119-3115	1	Decal-Danger
2	119-3101	2	Cross And Bearing Kit	18	119-3117	1	Ball And Collar Kit
3	119-3102	1	Tube-Inner (Male PTO #4)	19	119-3118	1	Screw And Nut ASM
4	119-3103	1	Yoke W/ Tube #4	20	119-3119	8	Bolt And Nut ASM
5	119-3104	1	Pin-Roll	21	119-3120	8	Spring
6	119-3105	1	Tube-Inner, Yoke #4	22	119-3121	1	Yoke-Flange
7	119-3106	1	Clutch ASM	23	119-3122	1	Bushing
8	119-3107	1	Support-Shield	24	119-3123	2	Plate-Clutch
9	119-3108	1	Tube-Safety	25	119-3124	1	Hub
10	119-3109	1	Tube-Safety	26	119-3125	1	Plate-Pressure
11	119-3110	1	Connector	27	119-3126	1	Plate-Pressure, PTO
12	119-3111	1	Cone Sets	28	119-3127	1	Half Shaft ASM
13	119-3112	1	Shield-Clutch	29	119-3128	1	Half Shaft ASM
14	119-3113	2	Chain-Safety	30	119-3129	1	Complete Shield ASM
15	119-3114	1	Decal-Danger				

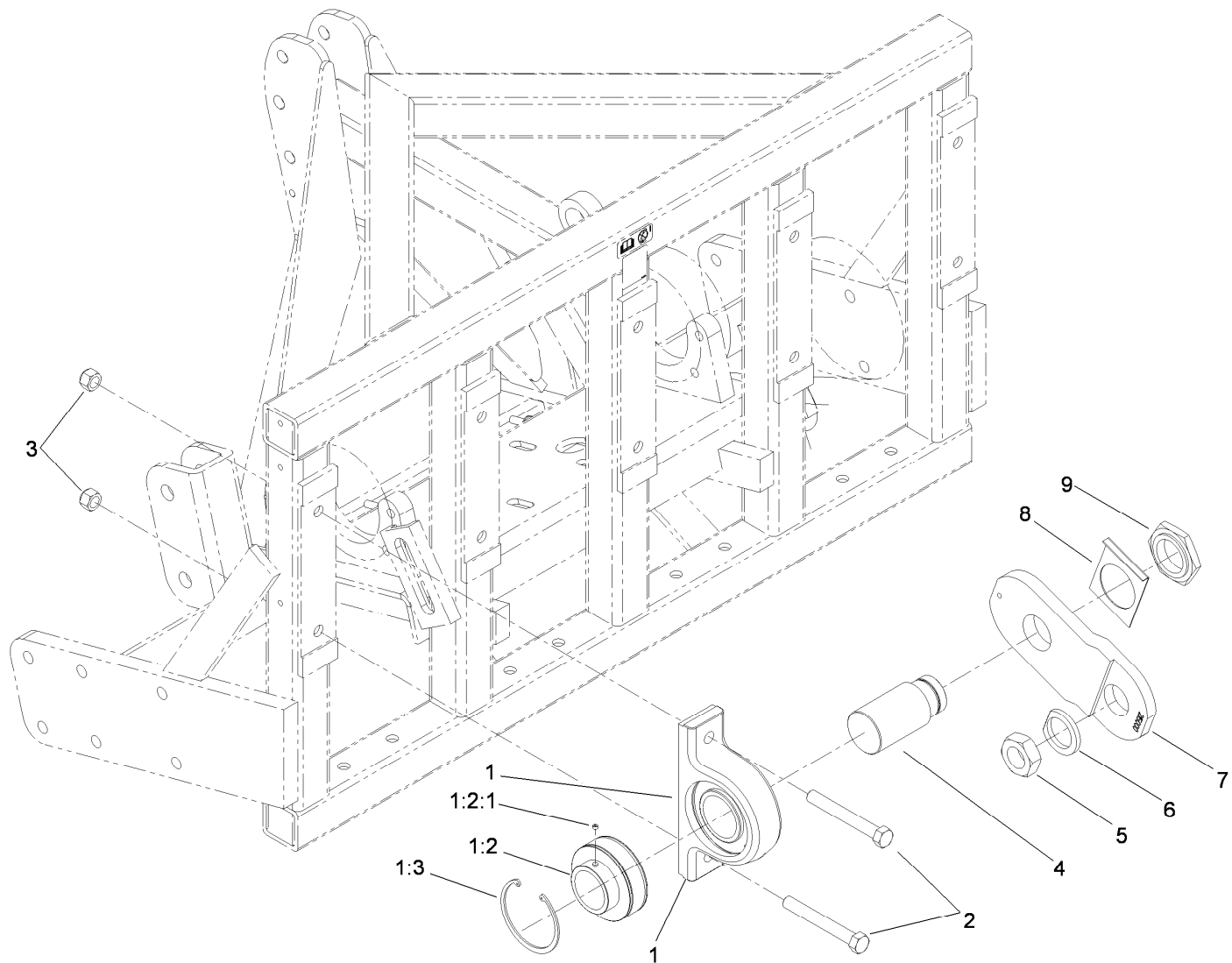


Frame and Roller Assembly

Ref.	Part Number	Qty.	Description	Ref.	Part Number	Qty.	Description
1	3214-9	20	Screw-HH	17	SG715010	1	HYD Cylinder ASM
2	3296-41	20	Nut-Lock NI	17:1	SG555013	2	Bushing
5	117-7186	1	Frame ASM	17:3		1	Cylinder-Hydraulic ■
5:2	117-7052	1	Decal-No Oil	17:3:1	117-7175	1	Seal Kit ●
5:3	100-3612	1	Decal-Warning	18	SG795245	1	Hose ASM (Short)
5:4	110-4668	1	Decal-Warning, PTO	19	SG795250	1	Hose ASM (Long)
6	SG620048-03	1	Roller-Main	20	SG715450	1	Pin-Link, Top
7	SG625048-01	2	Bar-Roller, Vertical	21	SG715875	2	Pin-Hitch
8	SG631150-03	2	Bearing-Roller	22	92-1298	2	Pin-Lynch
8:1		1	Bearing-Flange ■	23	100-5389	1	Pin-Lynch
8:1:1	106-9662	2	Screw-Set, HSH	24	SG999018	1	Canister-Manual, Operators
8:1:2	302-19	1	Fitting-Grease	25	322-3	2	Screw-HH
9	SG656048-03	1	Angle-Scraper	35	SG795551-03	1	Extension-Adapter 5.50"
11	323-6	2	Screw-HH	36	SG795554-03	1	Extension-Adapter 3.50"
13	3253-21	2	Washer-Lock	37	117-7124-03	1	Mount-Adapter, 90 DEG
15	SG785150-03	2	Stand-Storage				

● Not illustrated

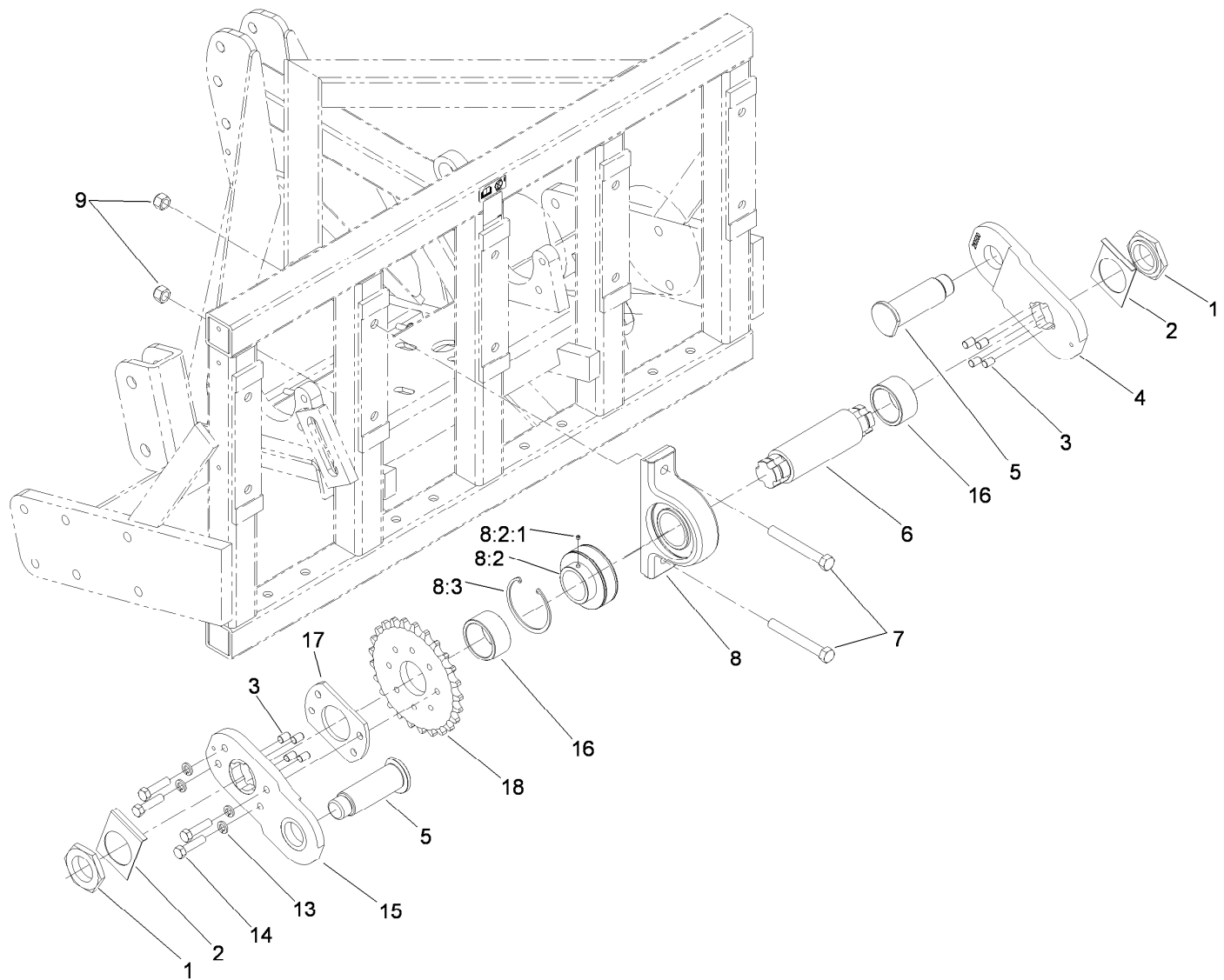
■ Not serviced separately



LH Outside Crankshaft Assembly

Ref.	Part Number	Qty.	Description
1	SG231040	1	Brg Housing ASM
1:2		1	Bearing-Ball ●
1:2:1	99-0195	2	Screw-Set, HSH
1:3	SG232433	2	Ring-Snap
2	SG278625	2	Screw-HH
3	3296-41	2	Nut-Lock NI
4	SG211557	1	Shaft-Stub, Outside
5	SG361375	1	Nut-Hex Jam
6	SG241753	1	Washer-Crank, Clipped
7	SG215000-03	1	Arm-Crank
8	SG281240	1	Plate-Locking
9	SG261535	1	Nut-Hex

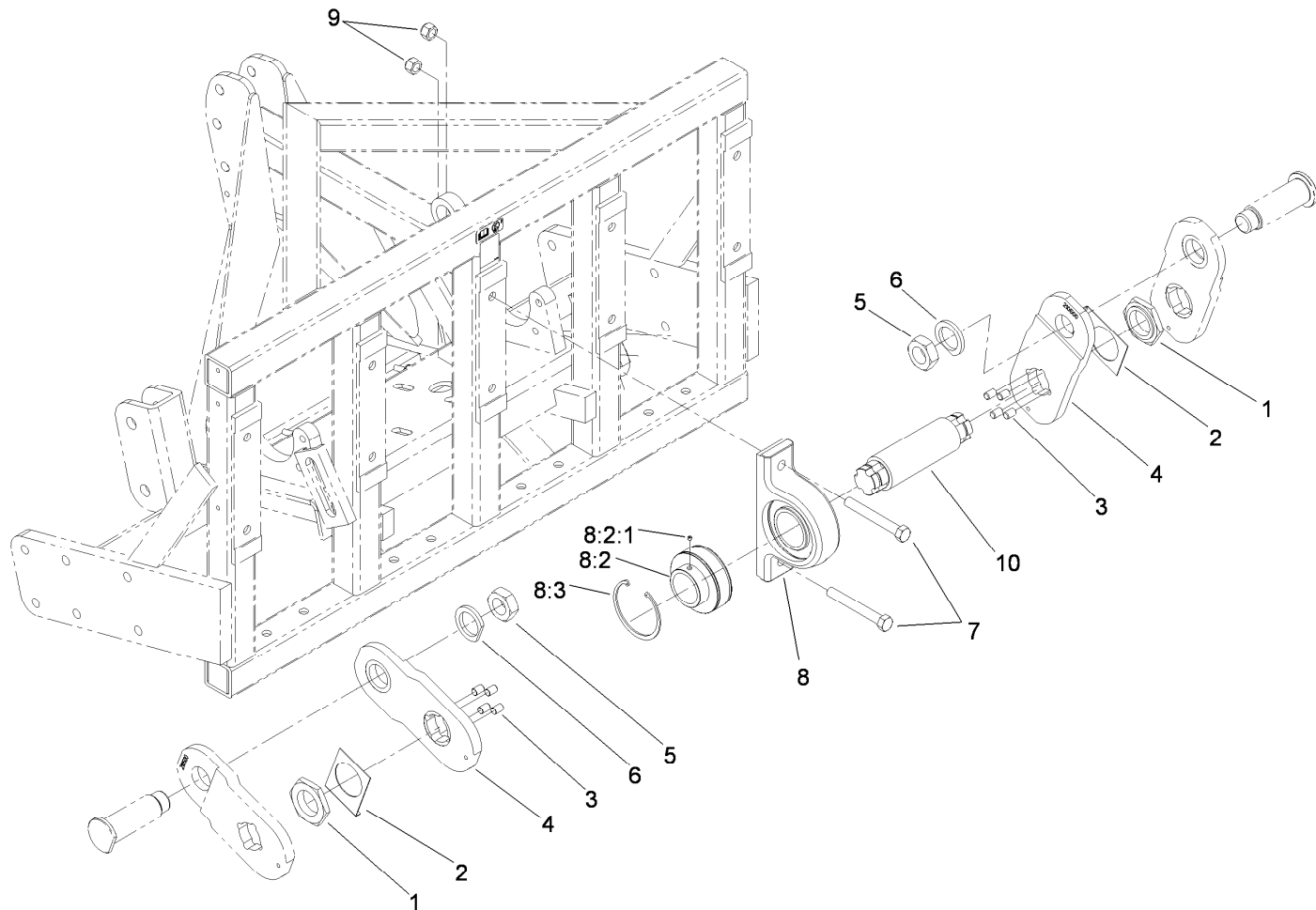
● Not serviced separately



Left Crankshaft Assembly

Ref.	Part Number	Qty.	Description	Ref.	Part Number	Qty.	Description
1	SG261535	2	Nut-Hex	8:2:1	99-0195	2	Screw-Set, HSH
2	SG281240	2	Plate-Locking	8:3	SG232433	2	Ring-Snap
3	SG250875	8	Pin-Dowel	9	3296-41	2	Nut-Lock NI
4	SG210500-03	1	Arm-Crank (1/2" Drive)	13	3253-7	4	Washer-Lock
5	SG315750	2	Pin-Crank	14	SG271517	4	Screw-HH
6	SG216500	1	Shaft-Crank	15	SG200500-03	1	Arm-Crank (1/2" Drive)
7	SG278625	2	Screw-HH	16	SG234149	2	Spacer-Tube
8	SG231040	1	Brg Housing ASM	17	SG243300	1	Spacer-Sprocket
8:2		1	Bearing-Ball ●	18	SG214025	1	Sprocket-Bore, Plain

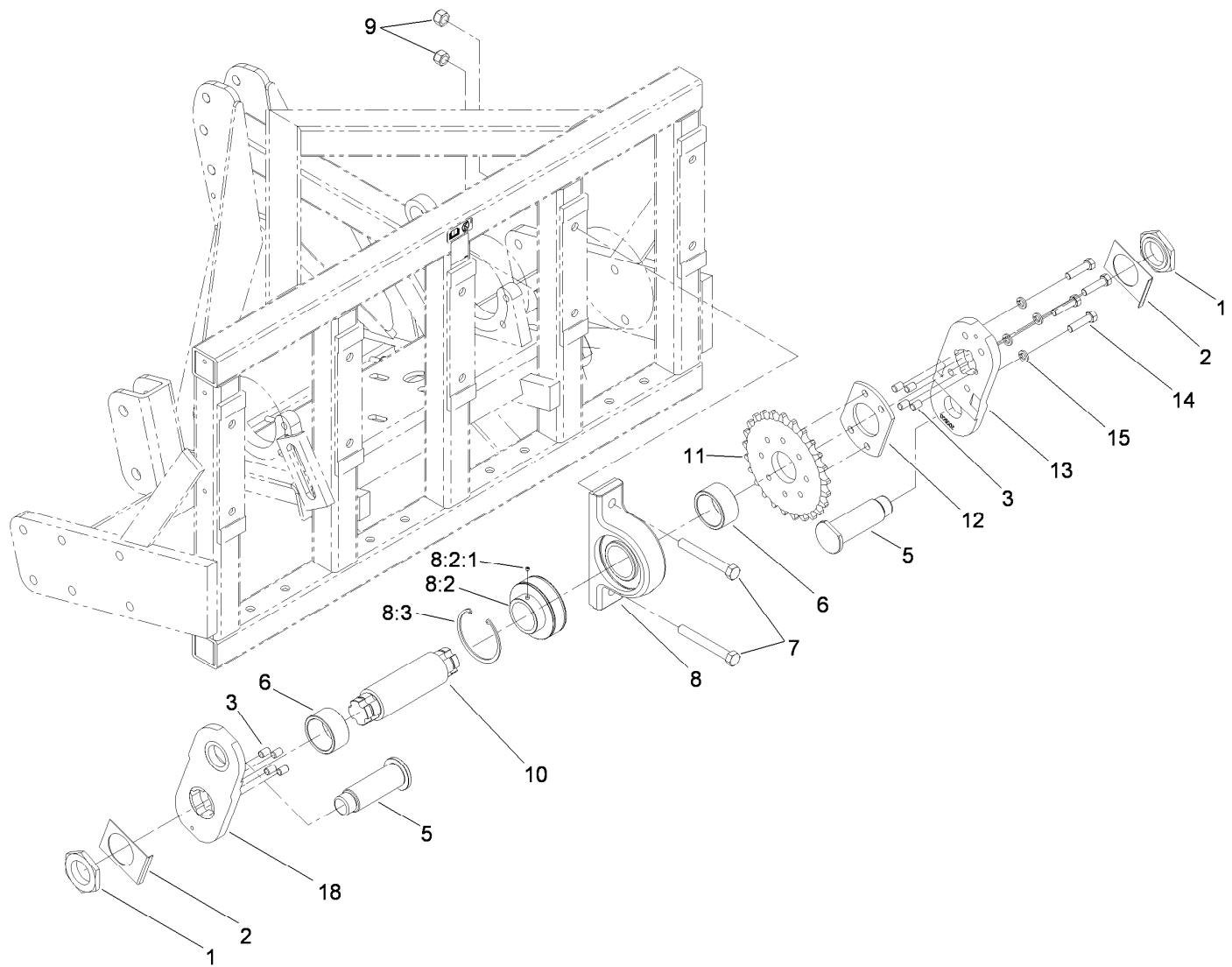
● Not serviced separately



Center Crankshaft Assembly

Ref.	Part Number	Qty.	Description
1	SG261535	2	Nut-Hex
2	SG281240	2	Plate-Locking
3	SG250875	8	Pin-Dowel
4	SG210500-03	2	Arm-Crank (1/2" Drive)
5	SG361375	2	Nut-Hex Jam
6	SG241753	2	Washer-Crank, Clipped
7	SG278625	2	Screw-HH
8	SG231040	1	Brg Housing ASM
8:2		1	Bearing-Ball ●
8:2:1	99-0195	2	Screw-Set, HSH
8:3	SG232433	2	Ring-Snap
9	3296-41	2	Nut-Lock NI
10	SG216500	1	Shaft-Crank

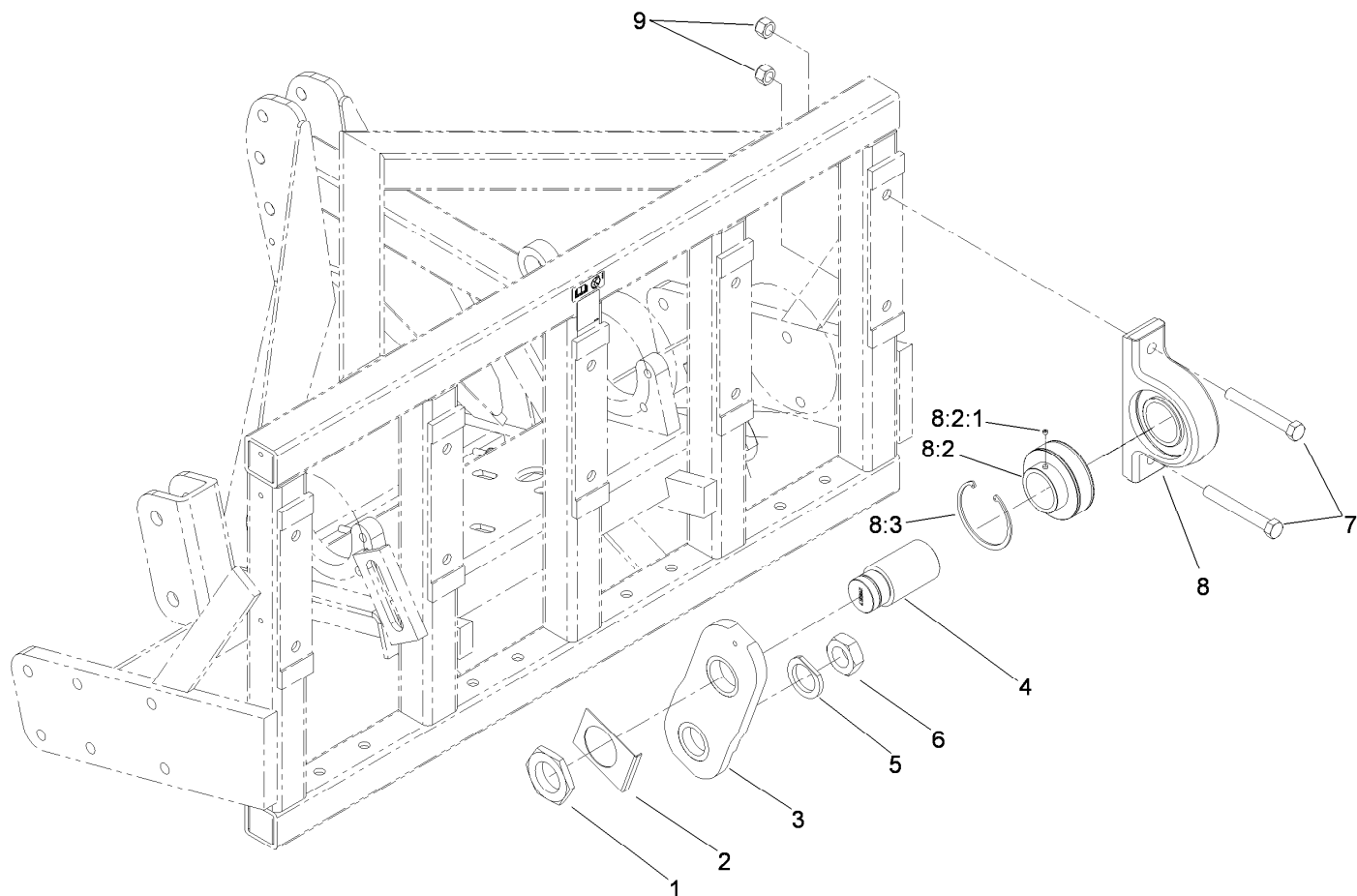
● Not serviced separately



RH Crankshaft Assembly

Ref.	Part Number	Qty.	Description	Ref.	Part Number	Qty.	Description
1	SG261535	2	Nut-Hex	8:3	SG232433	2	Ring-Snap
2	SG281240	2	Plate-Locking	9	3296-41	2	Nut-Lock NI
3	SG250875	8	Pin-Dowel	10	SG216500	1	Shaft-Crank
5	SG315750	2	Pin-Crank	11	SG214025	1	Sprocket-Bore, Plain
6	SG234149	2	Spacer-Tube	12	SG243300	1	Spacer-Sprocket
7	SG278625	2	Screw-HH	13	SG200500-03	1	Arm-Crank (1/2" Drive)
8	SG231040	1	Brg Housing ASM	14	SG271517	4	Screw-HH
8:2		1	Bearing-Ball ●	15	3253-7	4	Washer-Lock
8:2:1	99-0195	2	Screw-Set, HSH	18	SG210500-03	1	Arm-Crank (1/2" Drive)

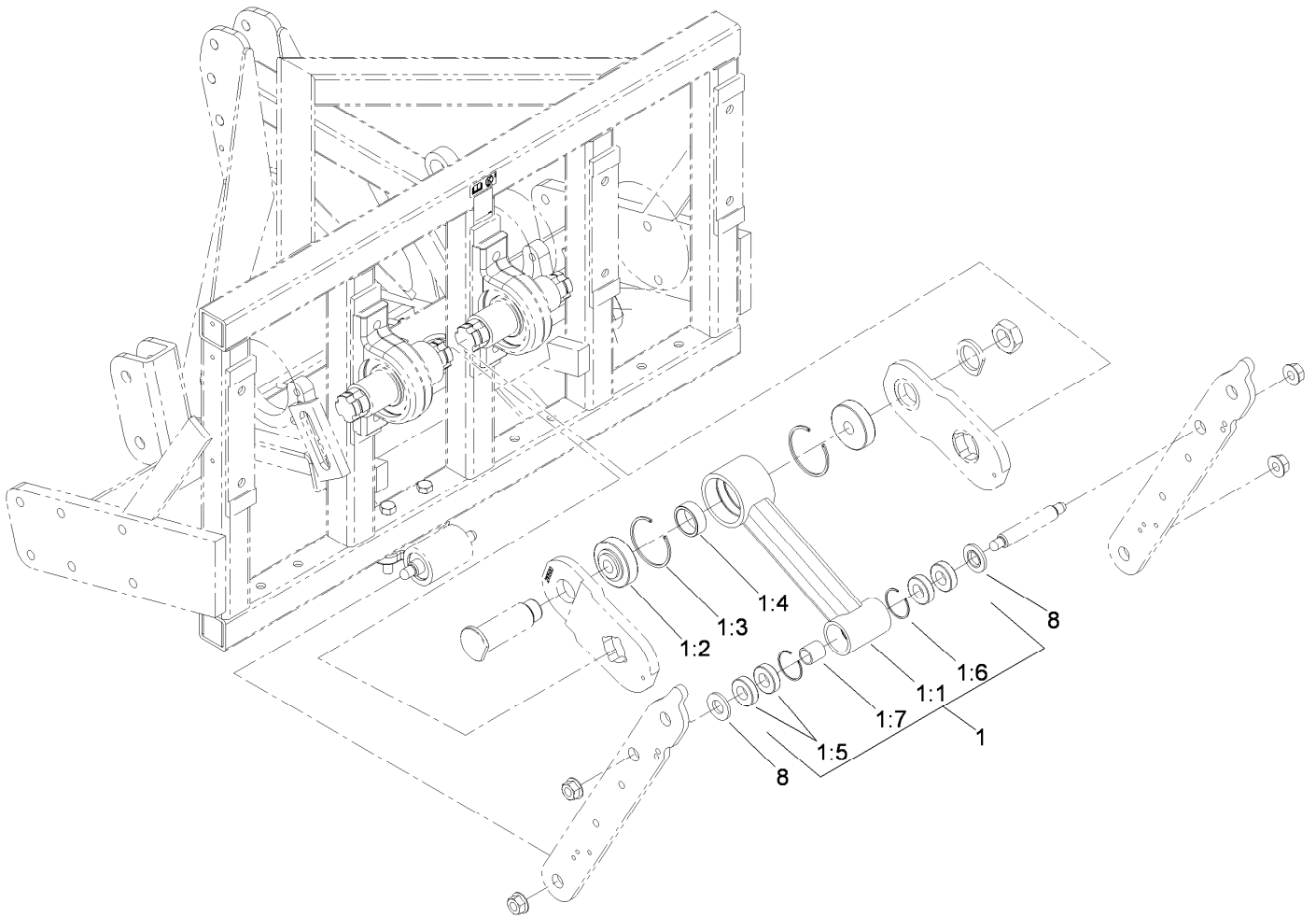
● Not serviced separately



RH Outside Crankshaft Assembly

Ref.	Part Number	Qty.	Description
1	SG261535	1	Nut-Hex
2	SG281240	1	Plate-Locking
3	SG215000-03	1	Arm-Crank
4	SG211557	1	Shaft-Stub, Outside
5	SG241753	1	Washer-Crank, Clipped
6	SG361375	1	Nut-Hex Jam
7	SG278625	2	Screw-HH
8	SG231040	1	Brg Housing ASM
8:2		1	Bearing-Ball ●
8:2:1	99-0195	2	Screw-Set, HSH
8:3	SG232433	2	Ring-Snap
9	3296-41	2	Nut-Lock NI

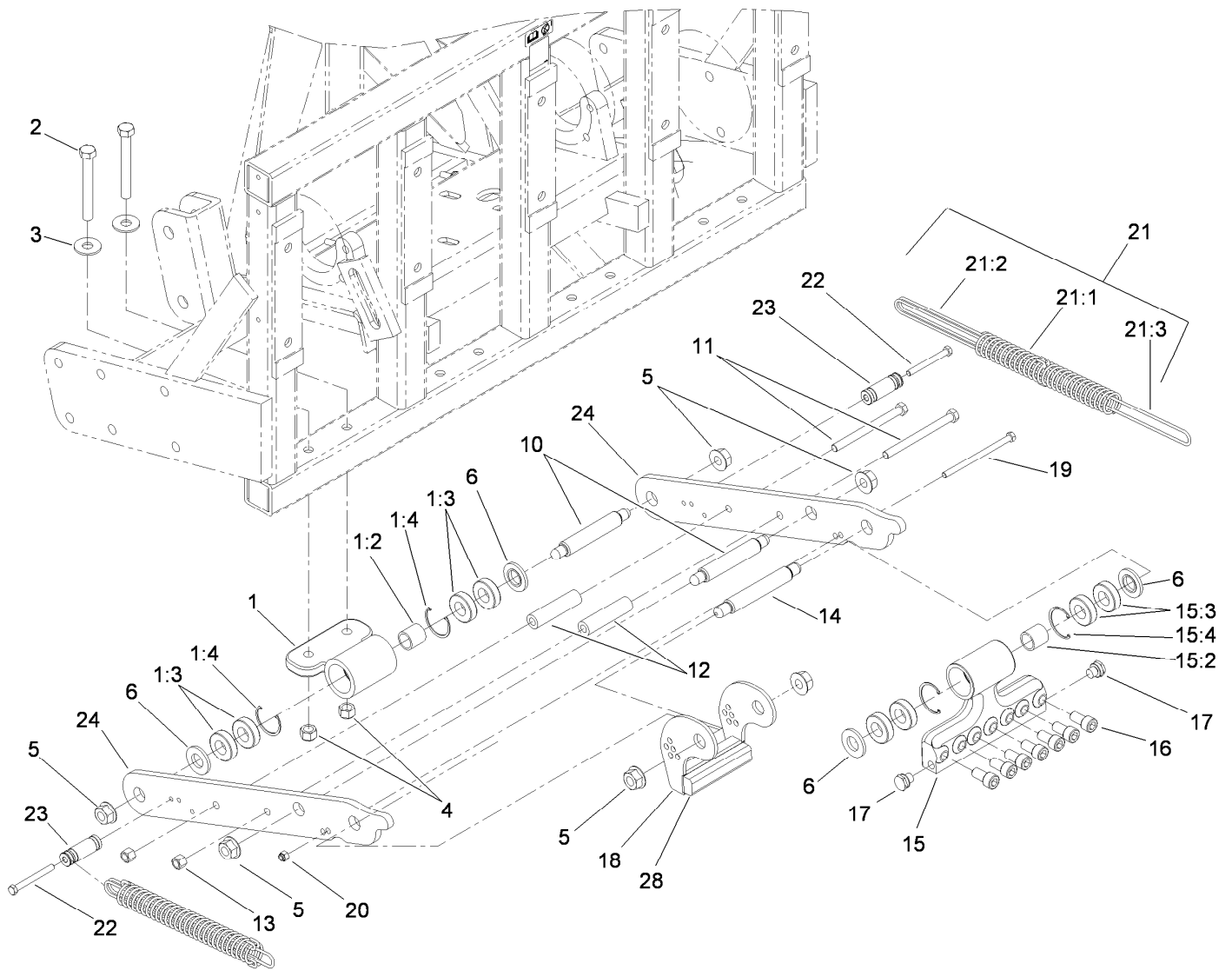
● Not serviced separately



Connecting Rod Assembly

Ref.	Part Number	Qty.	Description
1	SG134125	4	Stomper Arm ASM
1:1		1	Arm-Stomper Wa ●
1:2	SG331112	2	Bearing-Rod, Connecting
1:3	SG332334	2	Ring-Snap
1:4	SG340700	1	Spacer-Rod, Connecting
1:5	SG431012	4	Bearing-Ball
1:6	32120-65	2	Ring-Snap
1:7	SG410290	1	Bushing-Inner
8	SG441240	8	Bushing-Outer

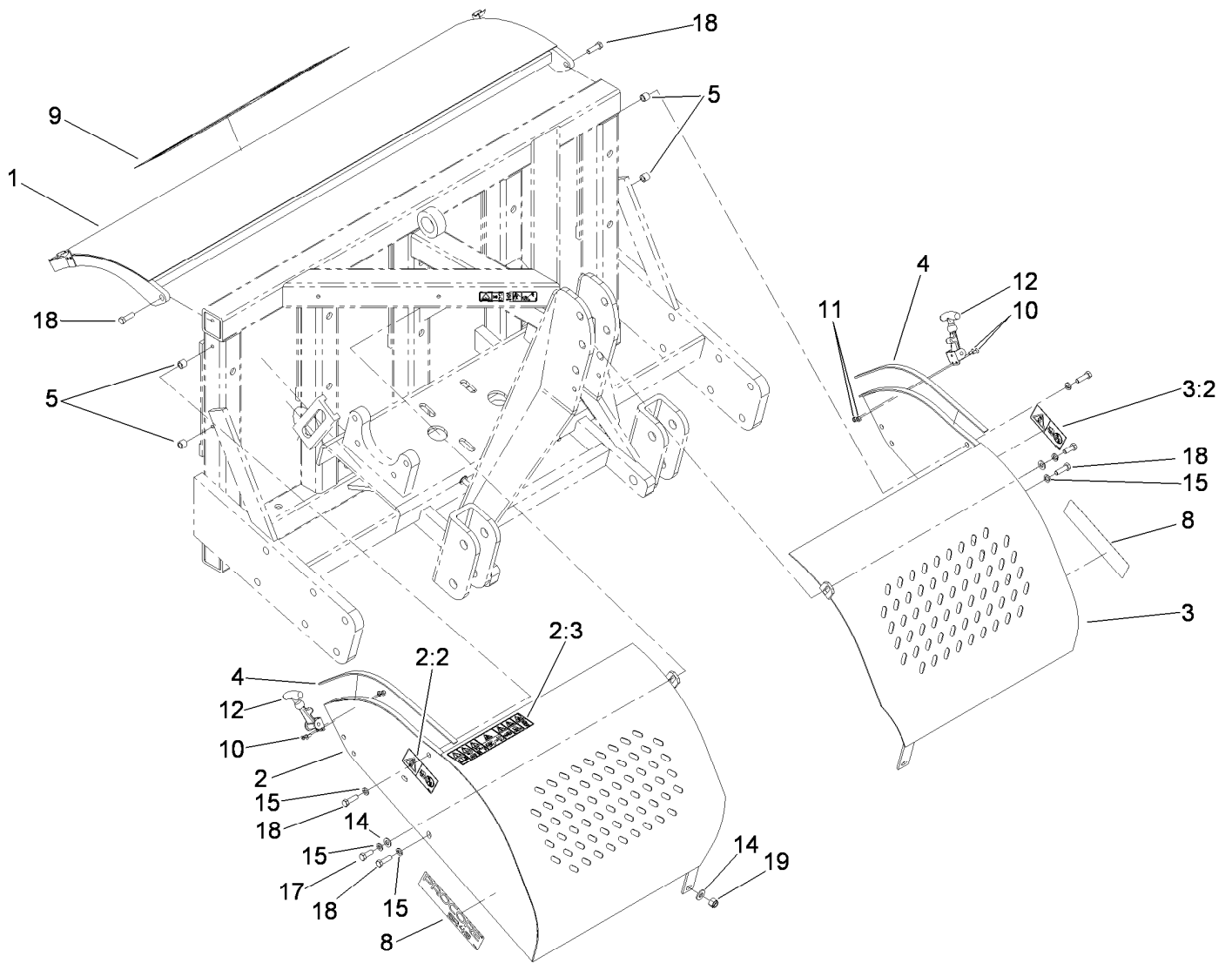
● Not serviced separately



Lower Arm and Hinge Assembly

Ref.	Part Number	Qty.	Description	Ref.	Part Number	Qty.	Description
1	SG142000	4	Hinge ASM	15:3	SG431012	4	Bearing-Ball
1:2	SG410290	1	Bushing-Inner	15:4	32120-65	2	Ring-Snap
1:3	SG431012	4	Bearing-Ball	16	SG471620	28	Head-Tine, Bolt (Long)
1:4	32120-65	2	Ring-Snap	17	SG483125	8	Holder-Spring, Front
2	SG471645	8	Bolt-Hinge	18	SG492000-03	4	Bracket-Camber
3	3256-7	8	Washer-Flat	19	323-22	4	Screw-HH
4	3296-41	8	Nut-Lock NI	20	3296-39	4	Nut-Lock, NI
5	32128-53	24	Nut-HF	21	SG148160	8	Spring ASM
6	SG441240	16	Bushing-Outer	21:1	SG481512	1	Spring-Compression
10	SG410500	8	Pin-Wrist, Short	21:2	SG482016	2	Wire-Bar, Draw
11	325-20	8	Screw-HH	21:3	SG482017	1	Wire-Bar, Draw
12	SG434118	8	Spacer-Arm, Linkage	22	323-15	8	Screw-HH
13	3296-23	8	Nut-Lock, NI	23	SG484351-03	8	Post-Spring, Rear
14	SG410437	4	Pin-Wrist, Head	24	SG434117-03	8	Plate-Arm, Linkage
15	SG145100	4	Tine Head ASM	25	SG885222	1	Wrench-Allen, 1/2 Inch ●
15:2	SG410290	1	Bushing-Inner	28	SG491000	4	Pad-Bumper

● Not illustrated



Cover Assembly

Ref.	Part Number	Qty.	Description	Ref.	Part Number	Qty.	Description
1	SG555131-03	1	Hood-Rear	8	117-7082	2	Decal
2	117-7178	1	RH Screen ASM	9	117-7053	1	Decal
2:2	117-7051	1	Decal-Danger, Keep Away Ce	10	3274-29	4	Screw-HSFH
2:3	117-7050	1	Decal-Warning, Ce	11	3296-2	4	Nut-Lock, NI
3	117-7179	1	LH Screen ASM	12	SG650006	2	Strap-Hood
3:2	117-7051	1	Decal-Danger, Keep Away Ce	14	3256-24	6	Washer-Flat
4	SG483257	2	Strip-Rubber	15	3253-21	2	Washer-Lock
5	SG555052	4	Spacer	17	323-6	4	Screw-HH
				18	323-7	6	Screw-HH
				19	3296-39	2	Nut-Lock, NI

Notes:



Count on it.