



Count on it.

Operator's Manual

**ProCore SR48, SR54, SR54-S,
SR70, SR70-S, SR72 and
SR75-HD Aerators**

Model No. 09920—Serial No. 290000001 and Up

Model No. 09921—Serial No. 290000001 and Up

Model No. 09922—Serial No. 290000001 and Up

Model No. 09924—Serial No. 290000001 and Up

Model No. 09925—Serial No. 290000001 and Up

Model No. 09926—Serial No. 290000001 and Up

Model No. 09927—Serial No. 290000001 and Up

Introduction

Read this information carefully to learn how to operate and maintain your product properly and to avoid injury and product damage. You are responsible for operating the product properly and safely.

You may contact Toro directly at www.Toro.com for product and accessory information, help finding a dealer, or to register your product.

Whenever you need service, genuine Toro parts, or additional information, contact an Authorized Service Dealer or Toro Customer Service and have the model and serial numbers of your product ready. Figure 1 identifies the location of the model and serial numbers on the product. Write the numbers in the space provided.

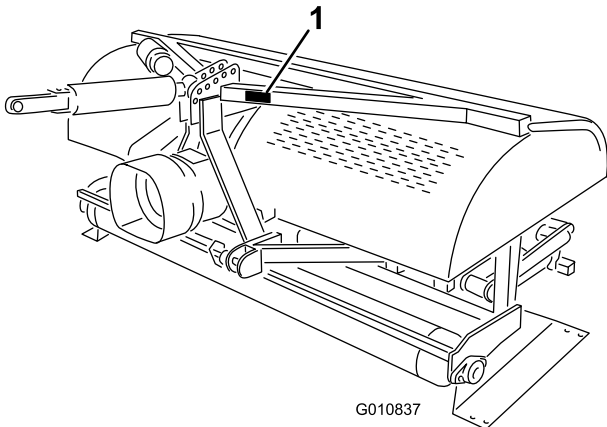


Figure 1

1. Model and serial number location

Model No. _____
Serial No. _____

This manual identifies potential hazards and has safety messages identified by the safety alert symbol (Figure 2), which signals a hazard that may cause serious injury or death if you do not follow the recommended precautions.



Figure 2

1. Safety alert symbol

This manual uses 2 other words to highlight information. **Important** calls attention to special mechanical information and **Note** emphasizes general information worthy of special attention.

Contents

Introduction.....	2
Safety	4
Safe Operating Practices	4
Safety and Instructional Decals	6
Setup.....	8
1 Connecting the Lower Link Arms	9
2 Connecting the Hydraulic Top Link (Models SR48, SR54, SR70, SR72 and SR75–HD	9
3 Connecting the Tractor Upper Link (Models SR54–S and SR70–S)	11
4 Verifying the Top Link Set Up	11
5 Checking the PTO Angle	12
6 Fitting the PTO shaft	12
7 Installing the PTO Shield	14
8 Connecting the PTO Shaft	15
9 Adjusting the Sway Links	16
10 Leveling the Aerator Side-to-Side	17
11 Installing the Tines	17
12 Removing the Storage Stands(Models SR54, SR54S, SR70 and SR70–S)	18
13 Removing the Storage Stands(Models SR72)	18
Product Overview	19
Specifications	19
Attachments/Accessories.....	19
Operation.....	20
Tractor Controls.....	20
Principles of Operation	20
Tractor PTO Speed	20
Training Period.....	20
Before Aerating.....	20
Aerating Procedures	21
Operating Tips	21
Subsoil Cultivation	22
Hard Ground	22
Longer/Larger Tines.....	22
Multi Row Adapter Heads	22
Root Zone Lifting	22
Adjusting the Tine Angle	22
Transport Operation	23
Inspection and Cleanup after Use.....	23
Maintenance.....	24
Recommended Maintenance Schedule(s)	24
Lifting the Machine	24
Greasing the Bearings.....	25
Checking the Gearbox Oil	25
Changing the Gearbox Oil.....	26
Inspecting/Adjusting the Drive Chain	26
Adjusting the PTO Clutch	27

Checking the Coring Head Fastener Torque	27
Checking the Springs	28
Adjusting the Hole Spacing.....	28
Removing the Aerator from the Tractor.....	28
Trouble Shooting	29
Storage.....	30

Safety

Improper use or maintenance by the operator or owner can result in injury. To reduce the potential for injury, comply with these safety instructions and always pay attention to the safety alert symbol, which means CAUTION, WARNING, or DANGER - "personal safety instruction." Failure to comply with the instruction may result in personal injury or death.

Safe Operating Practices

Before Operating

- Owners of this Aerator must give operators and employees full operation and safety instructions before allowing them to operate this machine and at least annually thereafter. An operator who has not read and fully understood all operating and safety instructions is not qualified to operate this machine. Become familiar with all controls and know how to stop quickly.
- Do not allow children to operate the machine. Do not allow adults to operate the machine without proper instruction.
- Remove all debris or other objects that might interfere with operation. Keep all bystanders away from the work area.
- Locate and mark all under ground obstructions such as irrigation components, electrical or telephone lines.
- Make sure tractor is in neutral and parking brake applied before starting. Refer to Tractor Operator's Manual for safe starting procedures.
- Ensure that your tractor is suitable for use with an implement of this weight by checking with your tractor supplier or manufacturer.
- Mounting the aerator to the rear of the tractor will decrease the weight on the tractor front axle. To assure adequate steering control and stability it may be necessary to add ballast to the front of the tractor. Refer to Tractor Operator's Manual for ballast requirements.
- Keep all shields and safety devices in place. If a shield, safety device or decal is damaged, repair or replace it before operation is commenced. Also tighten any loose nuts, bolts and screws to ensure machine is in safe operating condition.
- Do not operate machine while wearing sandals, tennis shoes, sneakers or shorts. Also, do not wear loose fitting clothing which could get caught

in moving parts. Always wear long pants and substantial shoes. Wearing safety glasses, safety shoes, hearing protection and a helmet is advisable and may be required by some local ordinances and insurance regulations.

While Operating

- Never operate the tractor in reverse when the aerator is lowered.
- Keep all bystanders and pets away from the work area.
- Using the machine demands attention, and to prevent loss of control:
 - Use only in daylight or when there is adequate artificial light.
 - Watch for holes or other hidden hazards.
 - Do not operate the machine close to a sand trap, ditch, creek or other hazard.
 - Reduce speed on side hills and before making sharp turns to prevent tipping or loss of control.
 - Look behind the aerator before backing up.
- If the tines strike a solid object or the machine vibrates abnormally, disengage the PTO, set the parking brake and shut the engine off. Remove key from ignition switch. Check aerator and traction unit for damage. Repair any damage before restarting the engine and operating the tines. Be sure tines are in good condition and all bolts are tight.
- Before leaving machine unattended, disengage power to aerator, lower aerator onto storage stands and set parking brake. Stop engine.
- Never dismount while tractor is in motion. Never get on or off tractor while engine is running and PTO drive shaft is engaged. Never step over PTO shaft to reach other side of aerator - walk around the machine.
- When lifting the aerator, disengage the PTO when the roller is approximately 5" from the ground.
- Do not operate this machine without the roller on the ground. **Never operate with the machine in the raised position.**
- Park the aerator on a hard, level surface, install the aerator storage stands before disconnecting from tractor.
- If it is necessary to probe below the soil surface, use a non conductive material to prevent electrical shock in case electrical wires are present.
- Always lower the aerator to the ground before leaving the tractor unattended. Never leave the aerator in the raised position when it is unattended.

Transporting

- The aerator is heavy. When attached to a tractor and in the raised position, its weight will affect stability, braking and steering. Exercise caution when transporting between working areas.
- Always maintain proper tractor tire pressure.
- Be sure you are in compliance with all regulations before transporting equipment on the public roads and highways. Make sure all required reflectors and lights are in place and are clean and visible by overtaking and oncoming traffic.
- Never allow passengers to ride on the machine during transport.
- Reduce speed on rough roads and surfaces
- Independent wheel brakes should always be locked together when transporting.

PTO Shaft

- For all PTO shaft steel parts (tubes, bearings, joints etc.) disassembly or repairs, it is highly advisable to contact your local Toro distributor. Removal of components for repairs and reassembly may damage some parts if not performed with special tools by trained technicians.
- The PTO shaft must not be used without the guards supplied, with partial protection or with damaged guards. On CE machines, operation is prohibited without the special anti-rotation chains correctly installed, so as to permit the maximum angle of the PTO shaft without breaking the chains.
- Friction clutches may become hot during use. **Do not touch.** To avoid the risk of fire, keep the area around the clutch free of flammable material and avoid prolonged slipping of the clutch.

Maintenance

- Before making adjustments or performing maintenance on the aerator, switch off the engine, stop the PTO and apply the parking brake before dismounting from the tractor. Be sure the aerator is on the ground or lowered onto the safety stands.
- Support the machine with the blocks, jacks or on storage stands when working beneath it. **Never rely on the tractor's hydraulics to support the machine.**
- Place all controls in neutral, stop the engine, apply parking brake and wait for all moving parts to stop before servicing, maintaining, adjusting or unblocking the aerator.

- Be sure the machine is in safe operating condition by keeping nuts, bolts and screws tight. Check the tine mounting bolts daily to be sure they are tightened to specification.
- Do not check or adjust the chain tension when the tractor engine is running.
- Be sure all guards are replaced and the hood is secured shut after maintaining or adjusting the machine.
- Perform only those maintenance instructions described in this manual. If major repairs are ever needed or assistance is desired, contact an Authorized Toro Distributor. To ensure optimum performance and safety, always purchase genuine Toro replacement parts and accessories to keep the Toro all Toro. Never use "will-fit" replacement parts and accessories made by other manufacturers. Look for the Toro logo to ensure genuineness. Using unapproved replacement parts and accessories could void the warranty of The Toro Company.

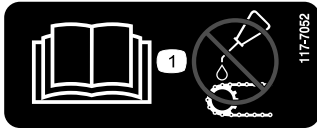
Storage Safety

- Store the aerator on the storage stands positioned on a firm level surface.
- Store the aerator away from areas of human activity.
- **Do not** allow children to play on or around the stored machine.
- Make sure the aerator is positioned on firm and solid ground so it does not sink or tip over.

Safety and Instructional Decals



Safety decals and instructions are easily visible to the operator and are located near any area of potential danger. Replace any decal that is damaged or lost.



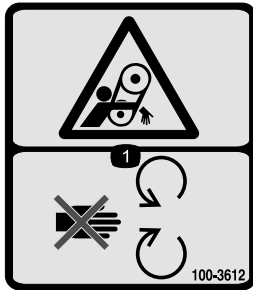
117-7052

1. Read the *Operator's Manual*, do not oil the chain drive.



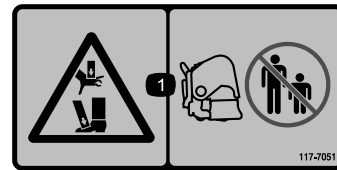
110-4668

1. Entanglement hazard, shaft—stay away from moving parts.
2. PTO speed and input direction.
3. Use clip to secure lash cable when not in use. Use lash cable to support the power take-off when the machine is disconnected from tractor.



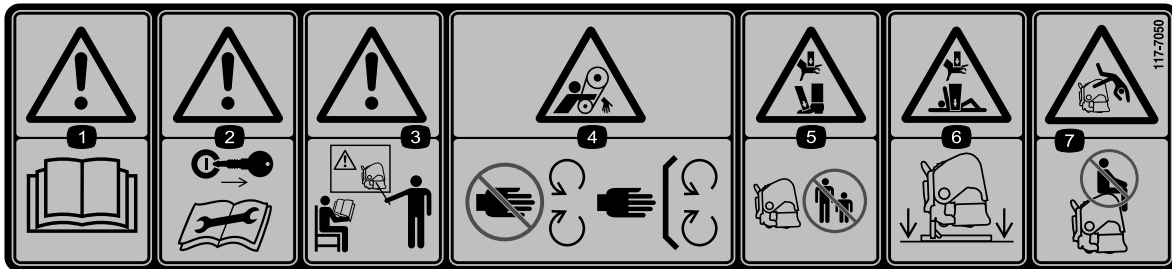
100-3612

1. Entanglement hazard—stay away from moving parts, keep all guards and shields in place.



117-7051

1. Crushing hazard of hand or foot—keep bystanders a safe distance from the machine.



117-7050

1. Warning—read the *Operator's Manual*.
2. Warning—remove the ignition key and read the instructions before servicing or performing maintenance.
3. Warning—do not operate this machine unless you are trained.
4. Entanglement hazard, belt—stay away from moving parts, keep all guards in place.
5. Crushing hazard of hand or foot—keep bystanders a safe distance from the machine.
6. Crushing hazard of hand and body—support machine on stand when not in use.
7. Falling hazard—do not carry passengers.

! DANGER



**ROTATING DRIVELINE
CONTACT CAN CAUSE DEATH
KEEP AWAY!**

DO NOT OPERATE WITHOUT —

- ALL DRIVELINE, TRACTOR AND EQUIPMENT SHIELDS IN PLACE
- DRIVELINES SECURELY ATTACHED AT BOTH ENDS
- DRIVELINE SHIELDS THAT TURN FREELY ON DRIVELINE

L1 WEASLER 13-10021-00

92-1581

! DANGER



**SHIELD MISSING
DO NOT OPERATE**

L2 WEASLER 13-10022-00

! DANGER



**SHIELD MISSING
DO NOT OPERATE**

L2 WEASLER 13-10022-00

! DANGER

92-1582

Setup

Loose Parts

Use the chart below to verify that all parts have been shipped.

Procedure	Description	Qty.	Use
1	Hitch pin Lynch pin	2 2	Connect Lower Link Arms
2	Hydraulic top link Hydraulic hose, 3–1/2 feet Hydraulic hose, 2–1/2 feet Extension bracket Rotational bracket Hose quick couplings (not included)	1 1 1 2 1 2	Connect Hydraulic Top Link
3	Spring loaded top link Link pin Lynch pin	1 3 3	Connect Upper Link
4	No parts required	–	Verify the top link set up
5	No parts required	–	Checking the PTO angle
6	PTO shaft	1	Fitting the PTO shaft
7	PTO Shield	1	Install the PTO Shield
8	Pin (supplied with PTO shaft) Nut (supplied with PTO shaft)	1 1	Connect PTO Shaft
9	No parts required	–	Adjusting Sway Links
10	Level (not supplied)	1	Level Aerator Side-to-Side
11	Tines	A/R	Install the Tines
12	No parts required	–	Remove Storage Stands
13	No parts required	–	Remove Storage Stands

Media and Additional Parts

Description	Qty.	Use
Operator's Manual	1	Read before operating the aerator
Parts Catalog	1	Use to reference part numbers
Spring Wires - SR54	6	Replacement spring wires
Spring Wires - SR70	8	Replacement spring wires
Spring Wires - SR72	4	Replacement spring wires
Spring Wires - SR72	2	Replacement spring wires
Allen wrench	1	Tine head bolt wrench for SR72
PTO Operators Manual	1	Read before operating the aerator

1

Connecting the Lower Link Arms

Parts needed for this procedure:

2	Hitch pin
2	Lynch pin

Procedure

1. Remove the bolts securing the aerator storage stands to the shipping pallet and remove the aerator from the pallet.
2. The aerator must be positioned on a flat, level surface for installation.
3. Back the tractor squarely up to the aerator until the lower link arms are aligned with the mounting brackets.
4. Make sure the PTO is disengaged.
5. Engage the parking brake, STOP the engine and remove the key from the ignition. Wait for the engine and all moving parts to STOP before leaving the Operator's seat on the tractor.

Note: For maximum ground clearance, the hitch pins should be secured in the aerator lower mounting bracket holes, when so equipped. To determine when to use the upper mounting holes, refer to Connecting the PTO Shaft.

6. Secure the lower link arms to the aerator mounting brackets with either lynch pins (Figure 3) or hitch pins and lynch pins (Figure 4).

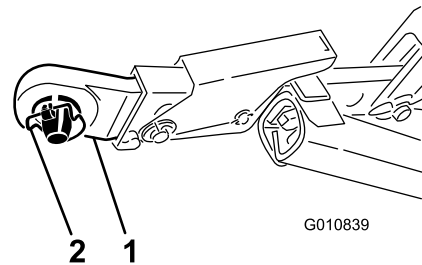


Figure 3

1. Lower link
2. Lynch pin

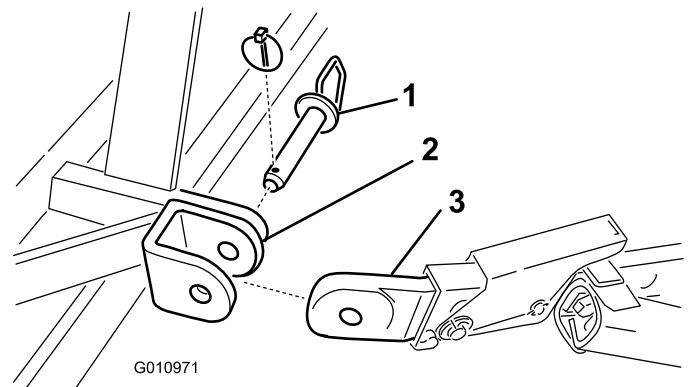


Figure 4

1. Hitch pin
2. Aerator mounting bracket
3. Lower link

2

Connecting the Hydraulic Top Link (Models SR48, SR54, SR70, SR72 and SR75-HD)

Parts needed for this procedure:

1	Hydraulic top link
1	Hydraulic hose, 3-1/2 feet
1	Hydraulic hose, 2-1/2 feet
2	Extension bracket
1	Rotational bracket
2	Hose quick couplings (not included)

Procedure

The tractor must be equipped with a double acting spool valve with an operator control lever and two 1/2" (12.7 mm) quick-release couplings at the rear of the tractor. It is also necessary for you to provide two quick couplings to fit to the hydraulic top link hoses (1/2-14 NPTF hose end thread size).

1. Secure the connecting link end of the hydraulic top link to the tractor with the pins supplied with the tractor (Figure 5). Position the hydraulic top link so the rod end is toward the aerator. The cylinder ports should be positioned toward the tractor's auxiliary power hydraulics.

Note: If the hydraulic cylinder must be positioned with the ports facing upward, use the rotational block instead of the standard mounting block to reposition the cylinder (Figure 5).

Install the rotational block as follows:

- A. Remove the cotter pin and pin securing the standard connecting link to the cylinder (Figure 5). Remove the connecting link from the cylinder.
- B. Install the rotational block to the cylinder with the pins previously removed (Figure 5).

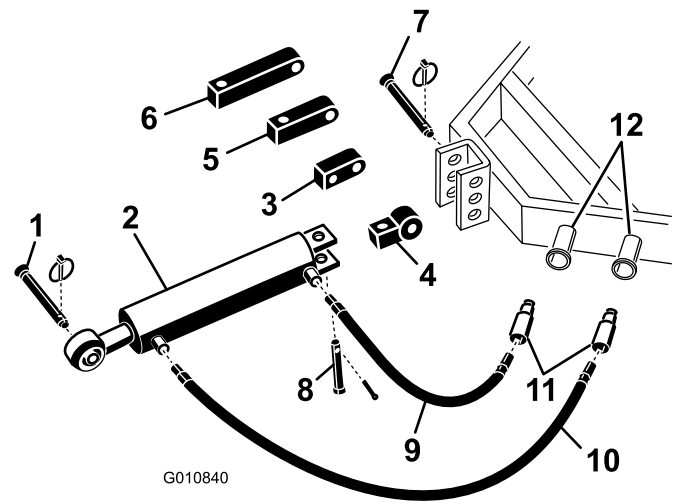


Figure 5

1. Aerator hitch pin
2. Hydraulic top link
3. Rotational block
4. Connecting link
5. 3 inch extension block
6. 5 inch extension block
7. Tractor link pin
8. Clevis & lynch pin
9. 2-1/2 foot hydraulic hose
10. 3-1/2 foot hydraulic hose
11. Hose quick couplings (not included)
12. Tractor hydraulic ports

2. Connect the 3-1/2 foot long hydraulic hose to the hydraulic top link port which is closest to the aerator (Figure 5). Apply Teflon tape or pipe thread sealant to the hose threads to prevent any leaks.
3. Connect the 2-1/2 foot long hydraulic hose to the hydraulic top link port which is closest to the tractor (Figure 5). Apply Teflon tape or pipe thread sealant to the hose threads to prevent any leaks.
4. Install quick couplings (not included) to the hydraulic hoses (1/2-14 NPTF hose end thread size).
5. Connect the two hydraulic hose quick couplings to the ports provided on the tractor.
6. Start the tractor engine and operate the tractor spool valve to check the extend and retract motion of the hydraulic top link.
7. Secure the rod end of hydraulic top link to the most forward hole possible in the aerator bracket with link pin and lynch pin (Figure 6).

Note: Reverse the hose connections if they do not agree with the tractor control operation.

Important: When securing the rod end of the hydraulic link, make sure to use the most forward mounting holes in the mounting bracket so there is enough clearance for the barrel of the cylinder when retracted.

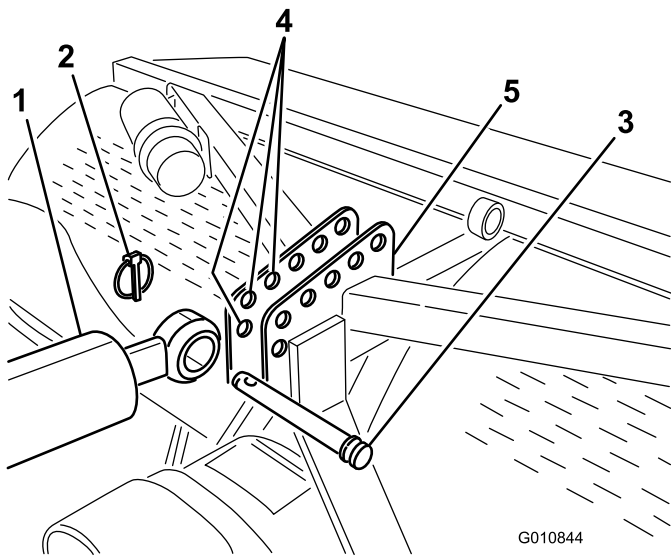


Figure 6

- | | |
|------------------------|------------------------------------|
| 1. Rod end of cylinder | 4. Aerator bracket (forward holes) |
| 2. Lynch pin | 5. Link pin |
| 3. Link pin | |

If the hydraulic cylinder does not reach the aerator mounting bracket, use an extension block instead of the standard mounting block to connect the cylinder to the tractor (Figure 5).

Install the extension blocks as follows:

- A. Remove the cotter pin and pin securing the standard connecting link to the cylinder (Figure 5). Remove the connecting link from the cylinder.
- B. Install the required length extension block to the cylinder with the pins previously removed (Figure 5).

3

Connecting the Tractor Upper Link (Models SR54-S and SR70-S)

Parts needed for this procedure:

1	Spring loaded top link
3	Link pin
3	Lynch pin

Procedure

1. Mount the spring loaded top link to the aerator bracket with two link pins and lynch pins (Figure 7)
2. Loosen the lock nut on the tractor upper link. Adjust the upper link until it aligns with the clevis on the spring loaded top link of the aerator (Figure 7).

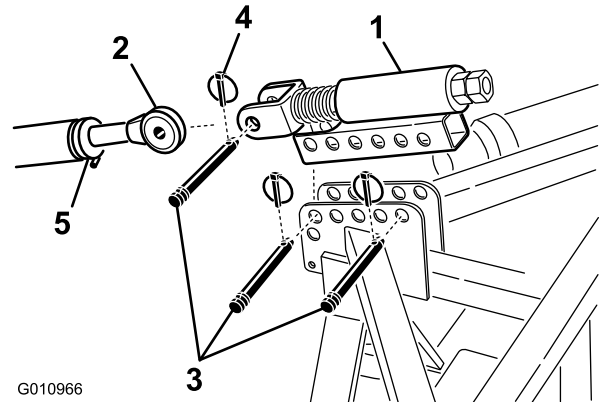


Figure 7

- | | |
|---------------------------|--------------|
| 1. Spring loaded top link | 4. Lynch pin |
| 2. Upper link | 5. Lock nut |
| 3. Link pin | |

3. Connect the tractor upper link to the clevis on the spring loaded top link and secure with a link pin and lynch pin (Figure 7).
4. Grease the threaded steel upper link tubes.
5. Measure the length of the spring in the top link.
6. Rotate the upper link until the spring is compressed by about 1/2 inch (Figure 7).
7. Tighten the lock nut to secure the upper link into position.

4

Verifying the Top Link Set Up

No Parts Required

Procedure

- Extending the hydraulic cylinder will increase the tine depth.
- Fully extend the hydraulic cylinder to determine the location of the tine heads and to verify if they contact the ground.

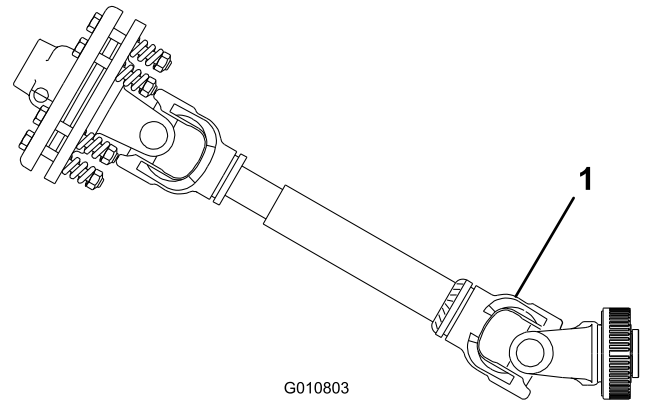


If the tine heads contact the ground, turf damage will occur.

Note: On undulating turf, the operator can adjust the cylinder to maintain tine depth (cresting a hill) but it will be necessary to have the tine heads set about 2 inches below ground.

- If the tine heads contact the ground, adjust the location of the cylinder ends to move the top of the aerator closer to the tractor.
- If the tine heads do not contact the ground, extension brackets (included with aerator) can be installed to the top link to move the tine heads closer to the ground.

Important: When connecting the PTO, be sure that the aerator is not being lifted higher than is necessary. Lifting the machine too high will cause the PTO shaft knuckles to break (Figure 8). Never leave the PTO turning when the aerator is lifted. The PTO can be operated up to an angle of 25°, but can never exceed a 35° angle when the aerator is at its highest position or severe shaft damage may occur.



G010803

Figure 8

1. Breakage will occur here

5

Checking the PTO Angle

No Parts Required

Procedure

With the aerator positioned on the ground and lowered to the deepest location, check the angle between the PTO and the aerator. Make sure the tines are removed before performing this operation.

Lift the aerator and fully retract the hydraulic top link cylinder. Check the angle between the PTO and the aerator. If this angle is greater than 35 degrees, make adjustments to the tractor so that the aerator cannot be lifted past 35 degrees. This can be accomplished by using the tractor lift stop (if so equipped) or moving the lower links to a higher mounting hole (if so equipped).

6

Fitting the PTO shaft

Parts needed for this procedure:

1	PTO shaft
---	-----------

Procedure

1. Move the tractor and aerator to a level surface.
2. Raise the aerator completely and fully retract the top link cylinder or upper link (Figure 9).

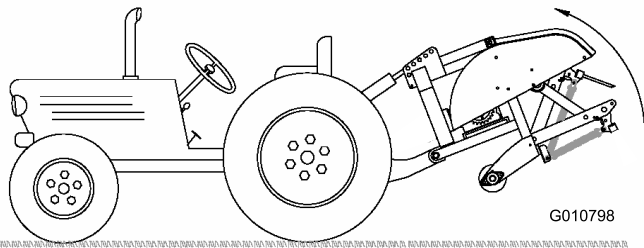


Figure 9

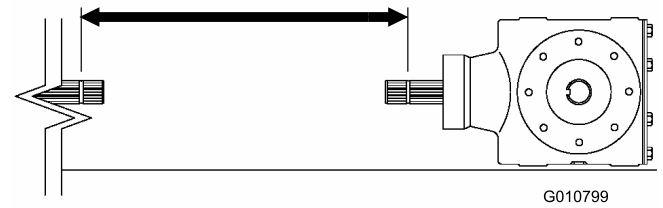


Figure 12

3. Measure the distance from the relief on the end of the tractor PTO shaft to the relief on the aerator gearbox PTO shaft (Figure 10). Record this distance. Example: 26.5 inches (67 cm).

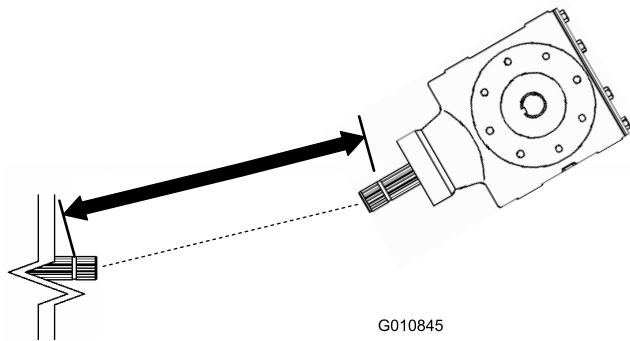


Figure 10

1. Measure here

4. Lower the aerator to the ground and fully extend the top link cylinder or upper link (Figure 11).

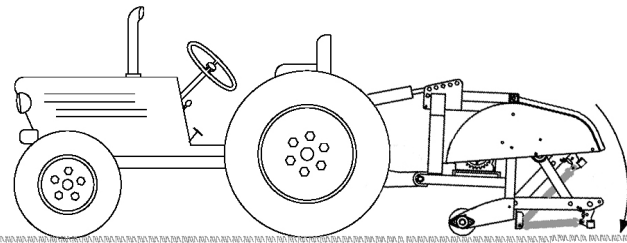


Figure 11

5. Measure the distance from the relief on the end of the tractor PTO shaft to the relief on the aerator gearbox PTO shaft (Figure 12). Record this distance. Example: 27.5 inches (70 cm).

1. Measure here

6. On the PTO shaft, measure the distance from the center of locking pin ball on one end to the center of the locking pin button on the other end (Figure 13). Record this distance. Example: 32 inches (81 cm).

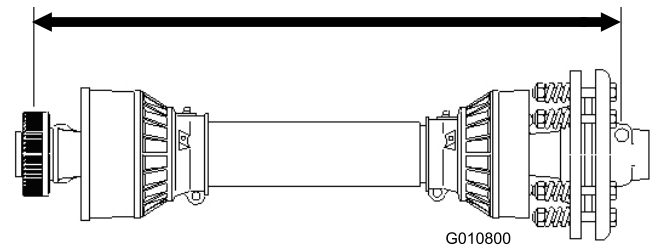


Figure 13

1. Measure here

7. Using the smaller of the two measurements in Figure 12 and Figure 10, subtract that distance from the distance in Figure 13. Example 32 (81 cm) inches minus 26.5 inches (67 cm) equals 5.5 inches (14 cm).
8. The example measurements show that the shaft is 5.5 inches too long. Now you will need to add an extra 1/2 inch (1.2 cm) to be sure that the PTO shaft will not bottom out when the aerator is lifted to its highest position.

Example: 5.50 inches (14 cm) plus 1/2 inch (1.2 cm) equals 6.00 inches (15 cm).

9. Slide the PTO shaft tubes together until they are fully collapsed. Verify that the **inside** tube does not protrude into the cross and bearing section of the outer tube (Figure 14). If this happens, cut **more off** the inside tube, to correct the problem.

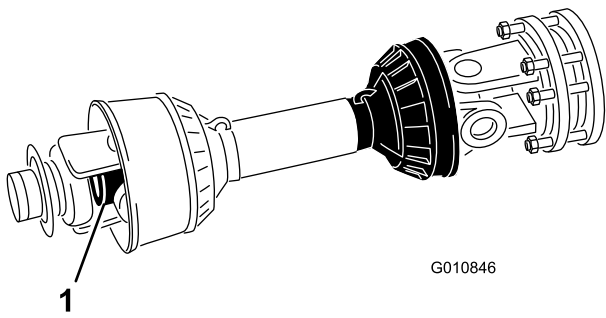


Figure 14

1. Inside tube

10. Separate the two halves of the PTO shaft (Figure 15, illustration 1).
11. Measure the distance from the end of each tube to its safety shield (Figure 15, illustration 1). Record the distances.

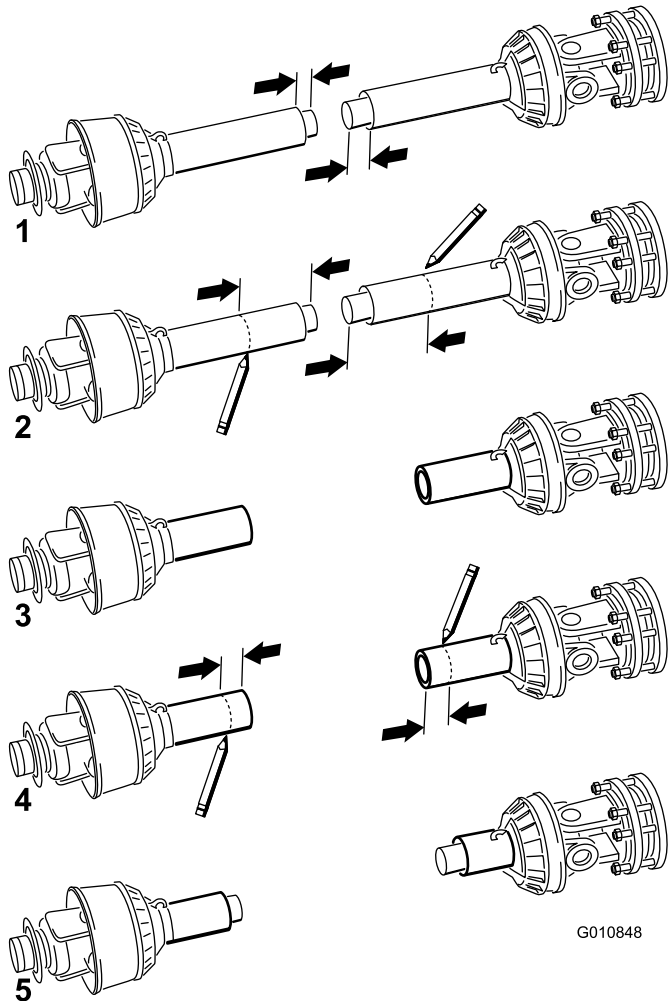


Figure 15

1. Measure here

12. Using the dimensions determined in step 8, locate, mark and cut off the shield and tube from each PTO half (Figure 15, illustrations 2 & 3).

Note: More will have to be cut off the inside tube only if it is protruding into the cross and bearing section of the outer tube.

13. Using the dimensions determined in step 11, locate, mark and cut off just the safety shields to expose the tubes (Figure 15—illustrations 4 & 5).
14. Carefully deburr the ends of the tubes with a file and remove all the filings from the tubes.
15. Grease the inside tube.

Note: Telescoping tubes must always overlap by 1/2 of their length in normal operation and at least 1/3 of their length in all working conditions. During transport, when the drive line is not rotating, the telescoping tubes must have a suitable overlap to maintain the tubes alignment and allow them to slide freely.

7

Installing the PTO Shield

Parts needed for this procedure:

1	PTO Shield
---	------------

Procedure

1. Remove the 4 bolts, lock washers and flat washers secured to the rear of the aerator gear box (Figure 16).

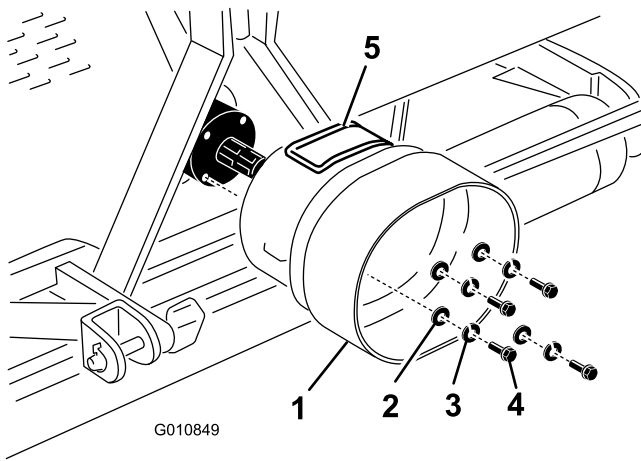


Figure 16

- | | |
|----------------|-----------------|
| 1. PTO shield | 4. Bolt |
| 2. Flat washer | 5. Access panel |
| 3. Lock washer | |

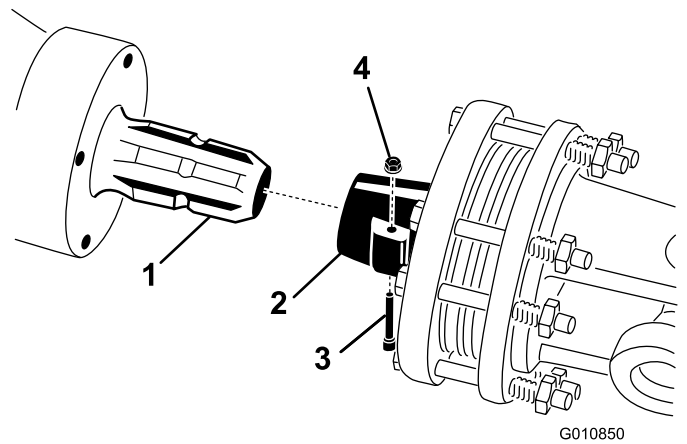


Figure 17

- | | |
|------------------------|--------|
| 1. Gearbox input shaft | 3. Pin |
| 2. PTO shaft coupler | 4. Nut |

2. Mount the PTO shield to the aerator gear box with the fasteners previously removed (Figure 16). When mounting the PTO shield, make sure the access panel (Figure 16) is positioned to the top or side depending on the aerator frame configuration.

Note: Make sure to close and latch the PTO shield access panel if opened.

3. Connect the PTO shaft to the tractor PTO shaft (Figure 18).

8

Connecting the PTO Shaft

Parts needed for this procedure:

1	Pin (supplied with PTO shaft)
1	Nut (supplied with PTO shaft)

Procedure

Note: The access panel (Figure 16) can be opened to ease the removal and installation of the PTO shaft mounting fasteners.

1. Remove the pin and nut from the PTO shaft (Figure 17).
2. Connect the clutch end of the PTO shaft to the aerator gearbox input shaft with pin and nut previously removed (Figure 17). The pin can only be inserted one way.

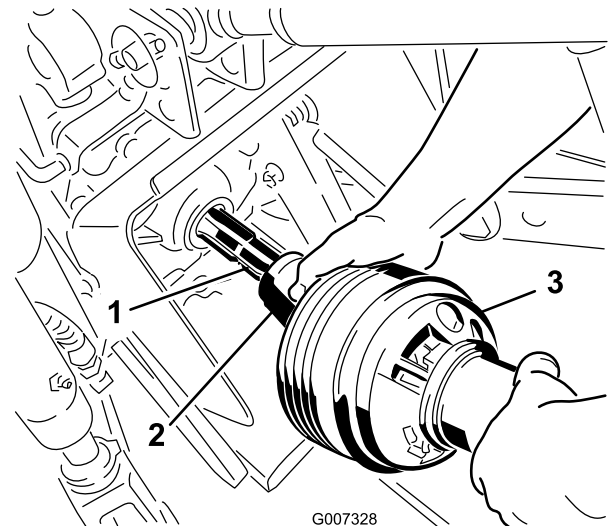


Figure 18

- | | |
|-------------------------|--------------|
| 1. Tractor output shaft | 3. PTO shaft |
| 2. PTO shaft coupler | |

4. Slide the PTO shaft forward as far as the tractor allows.
5. Pull back on the locking collar to secure the PTO shaft in place. Slide the PTO shaft back and forth to make sure it is properly locked.
6. Connect the shield safety chains to the PTO shield and the tractor bracket (Figure 19). Make sure the chains remain slack when the aerator is raised or lowered.

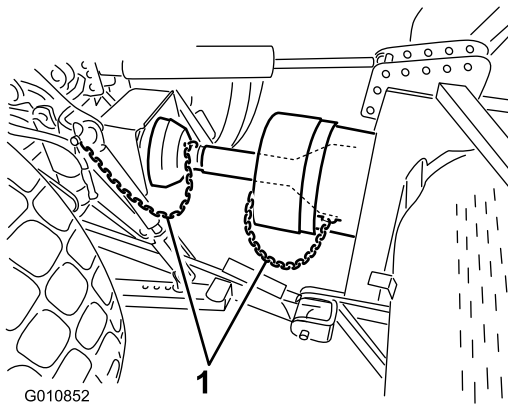


Figure 19

1. Safety chains

Note: To avoid excess lift, connect the lift arms of the tractor into the top holes of the lift bracket, if so equipped (Figure 20). The maximum angle on the PTO shaft is 35°.

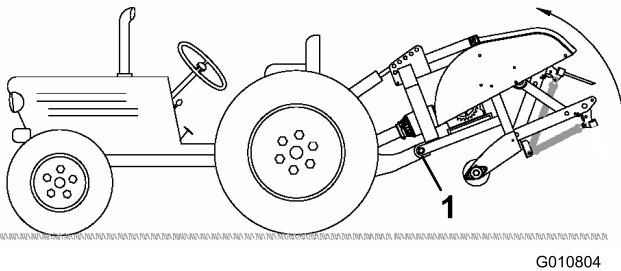


Figure 20

1. Top holes

Important: When connecting the PTO, be sure that the aerator is not being lifted higher than is necessary. Lifting the machine too high will cause the PTO shaft knuckles to break (Figure 21). Never leave the PTO turning when the aerator is lifted. The PTO can be operated up to an angle of 25°, but can never exceed a 35° angle when the aerator is at its highest position.

7. Verify that the PTO shield does not interfere with the clutch.

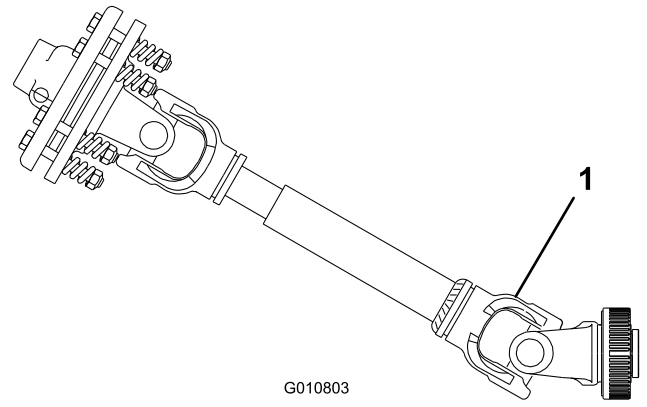


Figure 21

1. Breakage will occur here

9

Adjusting the Sway Links

No Parts Required

Procedure

The aerator is designed to be centered with the tractor PTO shaft center line. Adjust the sway links as required.

The PTO shaft should be as straight as possible to the tractor PTO shaft.

Adjust the sway links on the lower lift arms to minimize side-to-side sway to a maximum of 1 inch (25 mm) on each side (Figure 22).

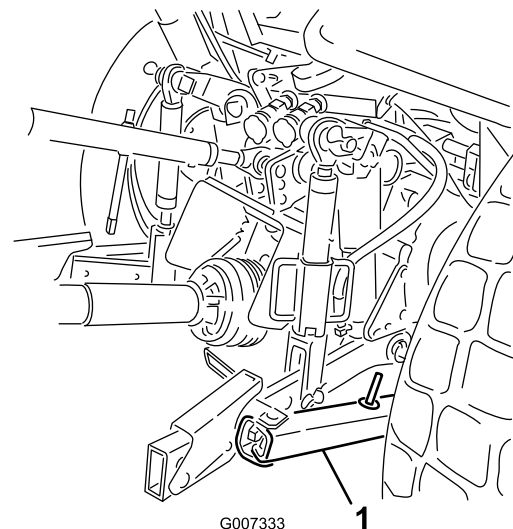


Figure 22

1. Sway link

11

Installing the Tines

Parts needed for this procedure:

A/R	Tines
-----	-------

Procedure

A wide selection of tines are available for the aerator. Choose the tine type, size and spacings required for the job. Refer to the Parts Catalog for the list of accessories.

1. Make certain the aerator is fully supported on the ground, stands or support blocks.
2. Turn off the tractor engine and remove the key.



Avoid standing too close to the rear of the machine when installing tines.

3. Loosen the clamping bolts and remove the previously used tines (Figure 24).

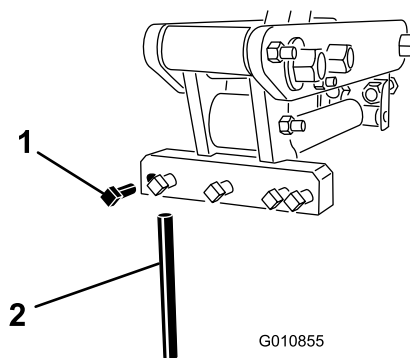


Figure 24

1. Clamping bolt
2. Tine

Adjust the lower links inboard until they contact the aerator mounting plates. This will reduce the stress on the pins. If the tractor has sway chains instead of sway links, it is recommended that washers be installed between the lower link arm and lynch pin to reduce the over hung load on the lift pins.

Note: Refer to the tractor Operator's Manual for additional installation and adjustment procedures.

10

Leveling the Aerator Side-to-Side

Parts needed for this procedure:

1	Level (not supplied)
---	----------------------

Procedure

1. Park the tractor and aerator on a level, firm surface.
2. Place a level on top of the aerator frame to check for level side-to-side (Figure 23).

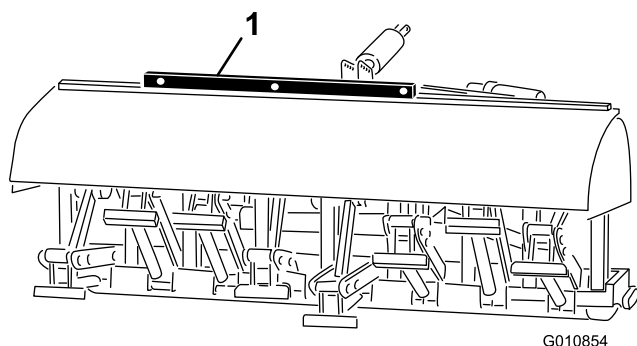


Figure 23

1. Level

3. Turn the adjustable link body (if provided) to raise or lower the link arm until the aerator is leveled side-to-side.

Note: Refer to tractor Operator's Manual for additional adjustment procedures.

6. Set the tine angle for the new tines. Refer to Adjusting the Tine Angle in the Operation section.
7. Before aerating formal turf for the first time after installing tines, test the aerator on a less important area so that you can try alternative tractor gears and fine tune the adjustment to achieve the hole spacing and turf appearance desired.

12

Removing the Storage Stands (Models SR54, SR54S, SR70 and SR70-S)

No Parts Required

Procedure

1. Raise the aerator roller(s) 3-6 inches off ground. Place support blocks under the roller(s).
2. Remove the bolts, lock washers and nuts securing the storage stands to each end of the aerator (Figure 25).

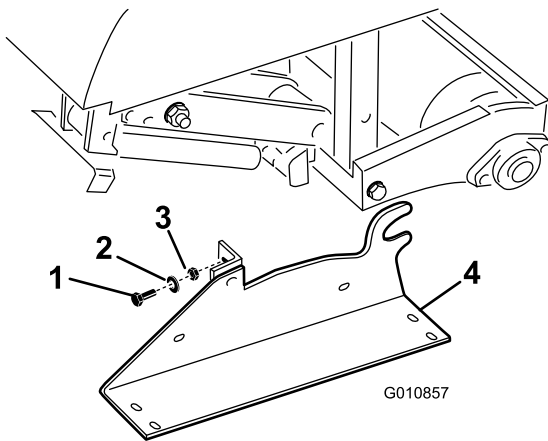


Figure 25

- | | |
|----------------|------------------|
| 1. Bolts | 3. Nut |
| 2. Lock washer | 4. Storage stand |

3. Remove the storage stands.
4. Use the storage stands whenever the aerator is removed from the tractor.

13

Removing the Storage Stands (Models SR72)

No Parts Required

Procedure

1. Raise the aerator roller(s) 3-6 inches off ground. Place support blocks under the roller(s).
2. Remove the bolts and nuts securing the storage stands to each end of the aerator (Figure 26).

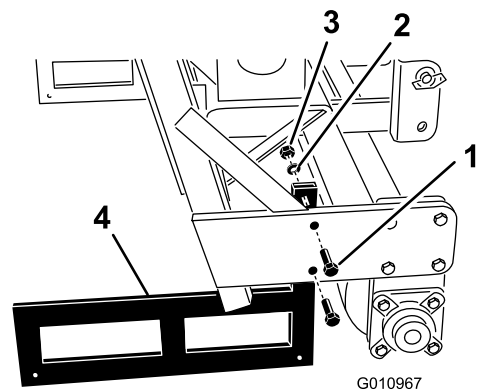


Figure 26

- | | |
|----------------|------------------|
| 1. Bolts | 3. Nut |
| 2. Lock washer | 4. Storage stand |

3. Remove the storage stands.
4. Use the storage stands whenever the aerator is removed from the tractor.

Note: When reinstalling the storage stands, make sure they are mounted to the inside of the roller plates so the lower frame tube will rest on the top of the stands.

Product Overview

Specifications

Note: Specifications and design are subject to change without notice.

	ProCore SR48	ProCore SR54	ProCore SR54-S	ProCore SR70	ProCore SR70-S	ProCore SR72	ProCore SR75HD
Weight with PTO & Top Link	1,450 lbs. (655 kg)	990 lbs. (450 kg)	1,250 lbs. (567 kg)	1,500 lbs. (681 kg)	1,655 lbs. (750 kg)	1,985 lbs. (900 kg)	3,250 lbs. (1,475 kg)
Working Width	48" (1.22 m)	54" (1.37 m)	54" (1.37 m)	73" (1.85 m)	73" (1.85 m)	72" (1.83 m)	78" (1.98 m)
Working Depth (Adjustable)	1"-14" (25-300 mm)	1"-10" (25-250 mm)	1"-10" (25-250 mm)	1"-10" (25-250 mm)	1"-10" (25-250 mm)	1"-16" (25-400 mm)	1"-16" (25-400 mm)
Hole Spacing	3"-6" (75-150 mm)	2.5"-4" (64-102 mm)	2.5"-4" (64-102 mm)	2.5"-4" (64-102 mm)	2.5"-4" (64-102 mm)	3"-6" (75-150 mm)	3"-6" (75-150 mm)
Productivity	25,000 sq. ft./hr. (2,325 sq.m/hr.)	36,000 sq. ft./hr. (3,345 sq.m/hr.)	36,000 sq. ft./hr. (3,345 sq.m/hr.)	48,000 sq. ft./hr. (4,460 sq.m/hr.)	48,000 sq. ft./hr. (4,460 sq.m/hr.)	38,000 sq. ft./hr. (3,530 sq.m/hr.)	48,000 sq. ft./hr. (4,460 sq.m/hr.)
Recommended Tractor Size	25 HP	16-18 HP	18 HP	25-35 HP	25-35 HP	45 HP	55+ HP
Recommended Lift Capacity	1,800 lbs. (817 kg)	1,200 lbs. (544 kg)	1,500 lbs. (680 kg)	1,700 lbs. (771 kg)	1,800 lbs. (817 kg)	2,800 lbs. (1,270 kg)	4,000 lbs. (1,815 kg)
Recommended Counter Weight	300 lbs. (135 kg)	150 lbs. (70 kg)	150 lbs. (70 kg)	250 lbs. (115 kg)	250 lbs. (115 kg)	300-500 lbs. (135-225 kg)	700-900 (315-410 kg)
Recommended PTO Speed	400-500 rpm	400-500 rpm	400-500 rpm	400-500 rpm	400-500 rpm	400-460 rpm	400-500 rpm
Actual Working Speed @ 400 PTO RPM (Varies with hole spacing)	.8-1.3 mph	1.5-2.5 mph	1.5-2.5 mph	1.5-2.5 mph	1.5-2.5 mph	.8-1.5 mph	.8-1.5 mph
Lift System	Std. 3-point	Std. 3-point	Std. 3-point	Std. 3-point	Std. 3-point	Std. 3-point	Std. 3-point

Attachments/Accessories

A selection of Toro approved attachments and accessories are available for use with the machine to enhance and expand its capabilities. Contact your Authorized Service Dealer or Distributor or go to www.Toro.com for a list of all approved attachments and accessories.

Operation

Note: Determine the left and right sides of the machine from the normal operating position.

Tractor Controls

It is necessary to familiarize yourself with the operation of the following tractor controls before you are able to operate the aerator:

- PTO Engagement
- Engine/PTO Rpm
- 3 Point Hitch (Raise/Lower)
- Auxiliary Valve Operation
- Clutch
- Throttle
- Gear Selection
- Parking brake

Note: Refer to tractor Operator's Manual for operating instructions.

Principles of Operation

The tractor's three point hitch linkage/hydraulic top link lifts the aerator for transport and lowers it for operation.

The tractor's power take off (PTO) power is transmitted via shafts, gearbox and O-ring drive chains to a crankshaft which drives the tine holding arms into the turf surface.

As the tractor travels forward with the PTO engaged and the machine lowered, a series of holes are created in the turf surface.

The depth of the tine's penetration is determined by extending the hydraulic top link or setting the fixed top link to the desired position.

Note: Do not attempt to adjust a fixed top link while the machine is running.

The distance between the holes created is determined by the tractor's gear ratio (or hydrostatic traction pedal position) and the number of tines in each tine head. Simply changing engine rpm does not change hole spacing.

Tractor PTO Speed

The aerator is designed to operate with a PTO speed of up to 500 rpm depending on the size/weight of the tines. Most tractors indicate a 540 PTO rpm position

on the rev counters. Since the engine and PTO rpms are directly proportional, you can determine the engine rpm required for a 400 rpm PTO by calculating as follows:

$(\text{Engine rpm at 540 PTO speed}) \times (400 \div 540) = \text{required engine rpm}$

For example, if the engine rpm were 2700 for a PTO speed of 540 rpm, you would get:

$2700 \times (400 \div 540) = 2000 \text{ rpm}$

In this example, running your tractor at 2000 rpm now provides you with a 400 rpm PTO speed.

If your tractor indicates some other engine rpm at 540 PTO rpm, substitute that number for the 2700 that was used above.

Training Period

Before using the aerator, find a clear area and practice using the machine. Operate the tractor at recommended gear settings and PTO drive speeds and become thoroughly familiar with machine handling. Practice stopping and starting, raising and lowering the aerator, disengaging the PTO drive and aligning the machine with previous passes. A practice session assures confidence in the performance of the aerator and helps ensure use of proper operating techniques wherever the machine is operated.

If there are sprinkler heads, electrical or communication lines or other obstructions in the area to be aerated, mark these items to ensure they are not damaged during operation.



To avoid personal injury, never leave the tractor seat without first disengaging the PTO drive, setting the parking brake and stopping the engine. Never perform aerator repairs without first lowering the aerator onto the storage stand or appropriate blocking or jacks. Be sure all safety devices are secured in proper place before resuming operation.

Before Aerating

Inspect the area of operation for hazards that could damage the machine and remove them, if possible, or plan how to avoid them. Carry replacement tines, spring wires, springs and tools in case tines are damaged due to contact with foreign materials.

Important: Never operate the aerator in reverse or when it is in the raised position.

Aerating Procedures

1. Lower the aerator so that the tines are nearly to the ground at the lowest part of their stroke.
2. At a low tractor engine rpm, engage the power take off (PTO) clutch to start the aerator working.
3. Select a gear that gives a forward speed of approximately .8 - 2.5 M.P.H. (1 to 4 km/hr.) at the rated PTO speed of 400–500 rpm (refer to the tractor Operator's Manual).
4. As the clutch is released and the tractor moves forward, lower the aerator fully onto the roller(s) and increase engine speed to give a maximum of 400–500 rpm (460 on model SR72) at the PTO.

Important: Never operate the tractor PTO in excess of 500 rpm or damage to the aerator could occur.

Important: Make sure that the roller is on the ground at all times when the aerator is operating.

5. Note the hole pattern. If you require greater hole spacing, increase forward the speed of the tractor by shifting up a gear or with a hydrostatic drive tractor, actuate the hydrostat lever or pedal to give faster speed. For closer hole spacing, decrease tractor forward speed. **Changing engine speed, while in the same gear, will not change the hole pattern.**

Important: Look behind frequently to ensure the machine is operating properly and alignment is maintained with previous passes.

6. Use the front tractor wheel as a guide to maintain equal lateral hole spacing with the previous pass.
7. At the end of the aeration pass, raise the aerator and quickly disengage the PTO.
8. If you back into a tight area (like a tee box), disengage the PTO and raise the aerator to its highest position. Never attempt to aerate in reverse.
9. Always clear the area of all damaged machine parts, such as broken tines, etc., to prevent anything from being picked up by mowers or other turf maintenance equipment and thrown.
10. Replace broken tines, inspect and correct damage to those still usable. Repair any other machine damage before continuing operation.

Operating Tips

1. Engage PTO at low engine speed. Increase engine speed to achieve the desired PTO speed of 400–500 rpm (maximum) and the lower aerator. Operate at an engine rpm that the aerator runs most smoothly.

Note: Changing the engine/PTO rpm in a particular tractor gear (or fixed hydrostatic pedal position on tractors with hydrostatic transmission) will not change hole spacing.

2. Make very gradual turns when aerating. Never make sharp turns with PTO drive engaged. Plan your aeration path before lowering the aerator. Making sharp turns while aerating will damage the aerator and the tines.
3. If tractor “bogs” down when operating on hard ground or going uphill, raise aerator slightly until speed is regained, then lower aerator again.
4. Best results are achieved when the tine entry is on a slight incline toward the rear of the machine. Use caution when extending the hydraulic top link to keep from hammering the turf with the tine heads. In some cases, you may not achieve the best results from using the pre-set holes in the camber brackets. Especially where the grass roots are short or weak. You may want to experiment using another camber setting that will set the tines on more of an incline to keep from pulling soil out of the hole.
5. Do not aerate if the ground is too hard or dry. Best results are obtained after a rain or when turf has been watered the previous day.

Note: If the roller rides up off the ground while aerating, the ground is too hard to achieve the desired depth, reduce the aeration depth until the roller contacts the ground during operation.

6. Raise aerator penetration, if ground is hard packed. Clean up cores and re-aerate at deeper penetration, preferably after watering.



To avoid personal injury, never leave the tractor seat without first disengaging the PTO drive, setting the parking brake and stopping the engine. Never perform aerator adjustments or repairs without first lowering the aerator onto the safety stand. Be sure all safety devices are secured in proper place before resuming operation.

7. Look behind frequently to ensure the machine is operating properly and alignment is maintained with

previous passes. A loss of one line of holes indicates a bent or lost tine. Inspect after each pass.

8. Always clear the area of all damaged machine parts, such as broken tines, etc., to prevent them from being picked up by mowers or other turf maintenance equipment and thrown.
9. Replace broken tines, inspect and correct damage to those still usable. Repair any other machine damage before commencing operation.

Subsoil Cultivation

Subsoil cultivation, fracturing or “heave” is created by a spading motion of the tine in the soil as the aerator and tractor move forward. Quality of finish on the playing surface after aerating will depend on various factors including turf condition, root growth and moisture content.

Hard Ground

If the ground is too firm to obtain the desired coring depth, the coring head can get into a “bouncing” rhythm. This is due to the hard pan the tines are attempting to penetrate. This condition can be corrected by attempting one or more of the following:

- Best results are obtained after a rain or when turf has been watered the previous day.
- Reduce the number of tines per stomper arm. Attempt to maintain a symmetrical tine configuration to evenly load the stomper arms.
- Reduce aerator penetration (depth setting) if ground is hard packed. Clean up cores, water turf, and aerate again at a deeper penetration.

Aeration of soil types built on top of hard sub soils (i.e. sand/soil cap placed over rocky ground) can cause undesired hole quality. This is caused when the aeration depth is greater than the soil cap and the sub soil is too hard to penetrate. When the tines contact this sub soil the aerator may lift and cause the top of the holes to become elongated. Reduce the aeration depth sufficiently to avoid penetration into the hard sub soil.

Longer/Larger Tines

Using longer/larger tines can leave the front or rear of the hole tufted or slightly deformed. Hole quality for this configuration generally improves if the coring head speed is reduced 10-15% from full operating speed. For PTO powered aerators reduce the engine speed until

the PTO speed is around 400 – 420 rpm. The forward spacing is not effected by reducing the engine speed. The pushed hole can also be affected by the position of the camber bracket. Refer to Adjusting the Tine Angle.

Multi Row Adapter Heads

When using multi row adapter heads, reduce the engine speed until the PTO speed is around 400 – 420 rpm. The forward spacing is not effected by reducing the engine speed.

Root Zone Lifting

Using multi-tine heads in conjunction with larger coring tines or large diameter solid tines can induce significant stress on the root zone of the turf. This stress can fracture the root zone and cause a lifting action to the turf. If this damage occurs try one or more of the following:

- Reduce tine density (remove some of the tines)
- Decrease coring depth (suggested in 1/2 inch increments)
- Increase forward hole spacing (change tractor transmission up one gear)
- Decrease the tine diameter (solid or coring)

Adjusting the Tine Angle

Models SR72

Set the camber bracket (Figure 27) to the correct position based on the length of tines to be used. The head stop is set to one of five predetermined positions by choosing the hole through which the adjustment rod is bolted. These holes are presets only; for instance, by using a 10 inch tine in the 12 inch position you may achieve a smoother finish; depending on the application.

1. Disengage the PTO and engage the parking brake.
2. Stop the engine and remove the key from ignition switch.
3. Release the spring tension to the tine head (Figure 27).
4. Remove the nut and bolt in the adjustment holes in the camber bracket (Figure 27).

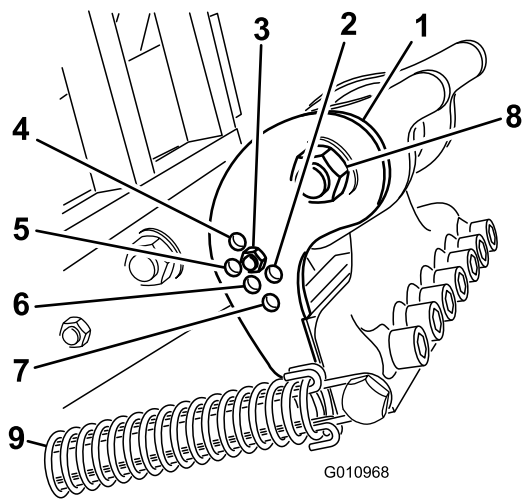


Figure 27

- | | |
|---|--------------------------|
| 1. Camber bracket | 6. 12 inch tine (Common) |
| 2. 14 inch tine | 7. 16 inch tine |
| 3. 12 inch tine (Use this position for more lifting action) | 8. Tine head pivot bolt |
| 4. 7 inch tine | 9. Spring |
| 5. 10 inch tine | |

5. Loosen the tine head pivot bolt (Figure 27).
6. Rotate the camber bracket until it is aligned with the desired hole in the arm and install the bolt and nut.

Note: Make sure the bolt goes through the chamber bracket and plate.
7. Torque the tine head pivot bolt to 300 ft-lb.
8. Reconnect the spring tension to the tine head.

Models SR54, SR54-S, SR70 and SR70-S

Set the tine angle according to the tine length by using one of the two adjustment holes in the linkage arm. These holes are presets only. When using 7 inch (17.77 cm) to 10 inch (25.4 cm) tines, the head bumper should be positioned closest to the rear of the tine head. The other position (the hole farthest from the head) may be needed due to variances of soil conditions.

1. Disengage the PTO and engage the parking brake.
2. Stop the engine and remove the key from ignition switch.
3. Release the spring tension to the tine head (Figure 28).

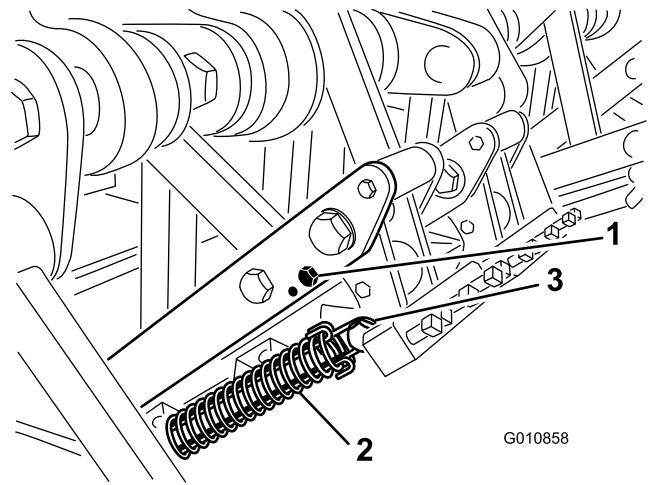


Figure 28

- | | |
|----------------|------------------------|
| 1. Bumper bolt | 3. Spring pin and clip |
| 2. Spring | |

4. Remove the bumper bolt and bumper from the linkage arm and reinsert them into the other adjustment hole (Figure 28).
5. Reconnect the spring tension to the tine head.

Transport Operation

To begin transport operation, raise the aerator and disengage the PTO. To avoid loss of control, traverse steep inclines slowly, approach rough areas at reduced speed and cross severe undulations carefully.

Important: Do not exceed transport speeds of 15 m.p.h. (24 km/hr.).

Inspection and Cleanup after Use

After daily use, thoroughly wash the machine with a garden hose **without** a nozzle so contamination and seal and bearing damage due to excessive water pressure will be avoided. A brush may be used to remove caked-on material. Use mild detergent to clean the covers. After cleaning, grease all drive lines and roller bearings, inspect for machine damage, oil leakage, component and tine wear. **Do not oil the O-ring drive chain.**

Remove, clean and oil the tines. Spray a light oil mist on coring head bearings (crank & damper links).

Clean and coat the springs with a dry lubricant like graphite or silicone.

Maintenance

Recommended Maintenance Schedule(s)

Maintenance Service Interval	Maintenance Procedure
After the first 8 hours	<ul style="list-style-type: none"> • Check the torque of all the coring head fasteners
After the first 50 hours	<ul style="list-style-type: none"> • Change the Gearbox Oil
Before each use or daily	<ul style="list-style-type: none"> • Inspect the chain tension • Check the springs • Clean and lubricate springs and tine mounting screws • Inspect the PTO for signs of wear.
Every 50 hours	<ul style="list-style-type: none"> • Grease the bearings and PTO shaft • Check the Gearbox Oil • Inspect the chain tension • Check the torque of the crank pin nuts and the hinge bolts. • Inspect bearings
Every 500 hours	<ul style="list-style-type: none"> • Change the Gearbox Oil • Inspect bearings and replace as needed
Before storage	<ul style="list-style-type: none"> • Perform all 50 hour maintenance procedures • Chipped surfaces-Paint • Loosen the PTO clutch bolts • Remove and clean tines • Remove all debris
Yearly or before storage	<ul style="list-style-type: none"> • Adjust the PTO clutch

Lifting the Machine



When changing attachments or performing other service, use correct blocks, hoists or jacks. Make sure machine is parked on a solid level surface such as a concrete floor. Prior to raising machine, remove any attachments that may interfere with the safe and proper raising of the machine. Always chock or block tow vehicle wheels. Use storage stands or blocks to support the raised machine. If the machine is not properly supported, the machine may move or fall, which may result in personal injury.

Note: A hoist can be used to lift the aerator. Use the coring head eyelet as a hoist attachment point (Figure 29). Make sure the hoist has enough lift capacity. Refer to the specification chart for aerator weights.

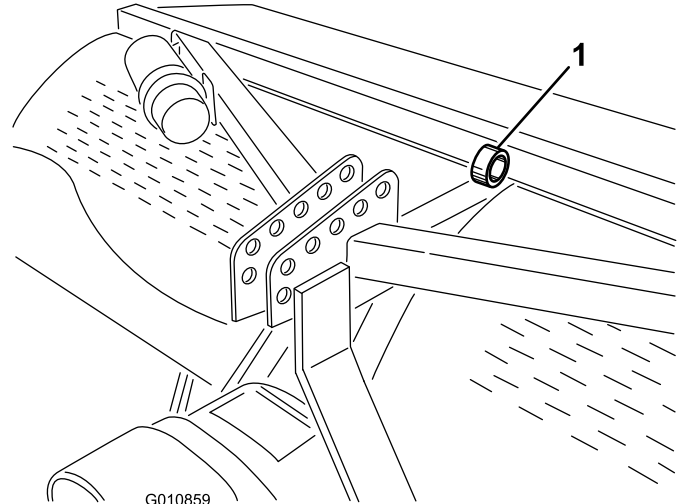


Figure 29

1. Coring head eyelet

Greasing the Bearings

Service Interval: Every 50 hours

The main working bearings of the aerator are sealed and require no maintenance or lubrication. This drastically reduces the maintenance required and eliminates the risk of grease or oil being dropped onto the turf.

There are grease fittings that must be lubricated with an SAE multi purpose, high-temperature grease with high pressure (EP) performance or SAE multi purpose lithium base grease.

The lubrication points are:

PTO Shaft (3) (Figure 30)

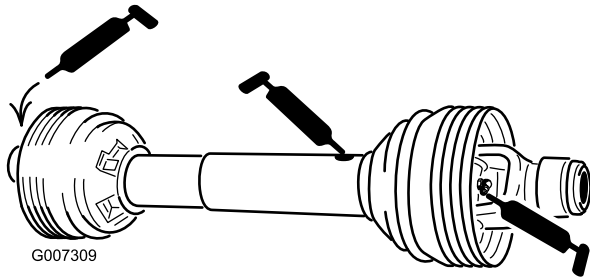


Figure 30

Roller bearings (Qty. 2 or 4, depending on model) (Figure 31)

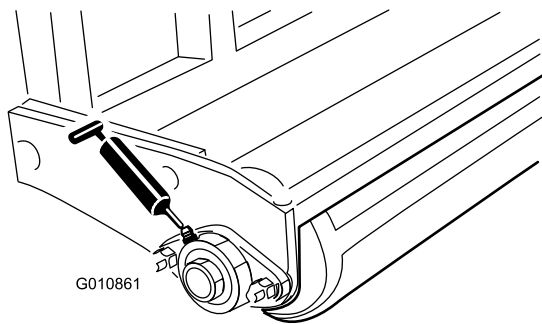


Figure 31

O-ring chain — **Do not lubricate the chain.**

Important: Bearings rarely fail from defects in materials or workmanship. The most common reason for failure is moisture and contamination working its way past the protective seals. Bearings that are greased will rely upon regular maintenance to purge harmful debris from the bearing area. Sealed bearings rely on an initial fill of special grease and a robust integral seal to keep contaminants and moisture out of the rolling elements.

The sealed bearings require no lubrication or short term maintenance. This minimizes routine service required and reduces the potential of turf damage due to grease contamination. These sealed bearing packages will provide good performance and life under normal use, but periodic inspections of bearing condition and seal integrity should be conducted to avoid downtime. These bearings should be inspected seasonally and replaced if damaged or worn. Bearings should operate smoothly with no detrimental characteristics such as high heat, noise, looseness or rust weeping.

Due to the operating conditions these bearing/seal packages are subject to (i.e. sand, turf chemicals, water, impacts, etc.) they are considered normal wear items. Bearings that fail due to other than defects in materials or workmanship are typically not covered under warranty.

Note: Bearing life can be negatively affected by improper wash down procedures. Do not use high-pressure or high volume spray directly at the bearings.

It is common for new bearings to purge some grease out the seals on a new unit. This purged grease will turn black in color due to collection of debris and not due to excessive heat. It is good practice to wipe this excess grease from the seals after the initial 8 hours. There may always appear to be a wet area around the seal lip. This is generally not detrimental to bearing life, but keeps the seal lip lubricated.

Inspect the coring head bearings every 500 operating hours and replace as needed.

Checking the Gearbox Oil

Service Interval: Every 50 hours

The gearbox is filled with 80W-90 gear oil or equivalent. Allow the gear box to cool before checking the oil level.

1. Clean debris from fill plug and check plug to avoid contamination.
2. Remove the check plug from the gearbox (Figure 32).

Note: If the gearbox has two check plugs, use the bottom one.

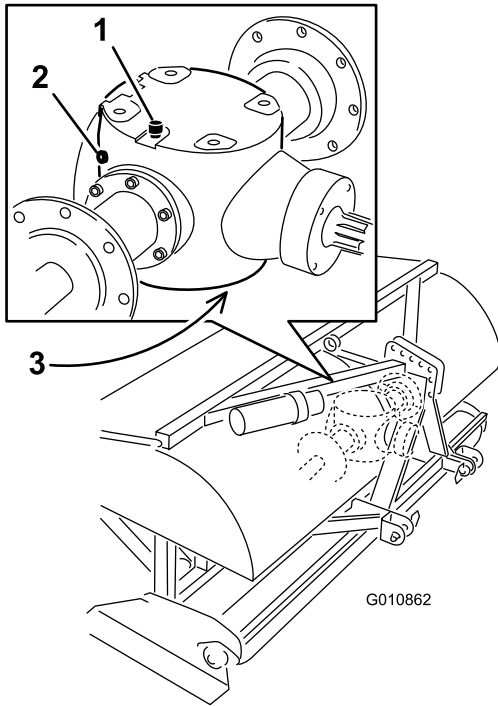


Figure 32

1. Vent/Fill plug
2. Check plug
3. Drain plug

3. Make sure oil is up to the bottom of the check plug hole in gearbox (Figure 32).
4. If oil level is low, remove vent/fill plug from top of gear box and replenish oil as required.
5. Install plugs.

Changing the Gearbox Oil

Service Interval: After the first 50 hours

Every 500 hours

The gearbox is filled with 80W–90 gear oil or equivalent.

1. Clean debris from vent/fill plug and drain plug to avoid contamination (Figure 32).
2. Remove the vent/fill plug to relieve air draw.
3. Position a drain pan under the drain plug and remove the plug.

Note: The high viscosity of cool oil will extend the drain time. (approximately 30 minutes)

4. After the oil is completely drained, reinstall the drain plug.
5. Fill the gear box with high quality 80W-90 gear lube. Use the following chart to determine the gear box oil capacity.

Model	Gear Case Capacity
SR54	2 quarts (1.9 liters)
SR54–S	2 quarts (1.9 liters)
SR70	2 quarts (1.9 liters)
SR70–S	2 quarts (1.9 liters)
SR72	4 quarts (3.8 liters)

6. Install the vent/fill plug.
7. Check the oil level and replenish as required.

Inspecting/Adjusting the Drive Chain

Service Interval: Before each use or daily

Every 50 hours

Check the drive chain for damage and correct adjustment. The chain should have approximately 1/2 inch (12.7 mm) of overall deflection (1/4 inch [6 mm] in each direction).

Chain tension can be adjusted by slightly loosening the main jam nut and tightening the jam rod to desired position (Figure 33 or Figure 34). Do not adjust the chain tension when the chain is hot or warm.

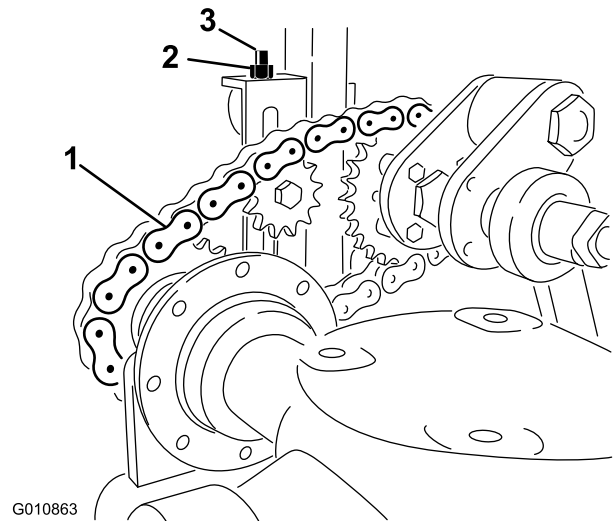


Figure 33

Models 54, 54–S, 70, & 72

1. Drive chain
2. Jam nut
3. Jam rod

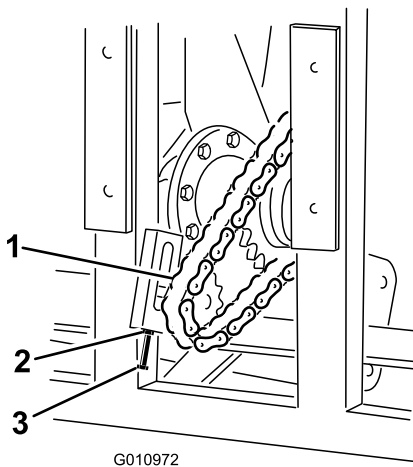


Figure 34
Models 72

- 1. Drive chain
- 2. Jam nut
- 3. Jam rod

Important: Do not over tighten chains; excess tightening of chains can cause gearbox/sprocket damage.

Adjusting the PTO Clutch

Service Interval: Yearly or before storage



Friction clutches may become hot during use. *Do not touch.* To avoid the risk of fire, keep the area around the clutch free of flammable material and avoid prolonged slipping of the clutch.

- At the end of the season, back off each of the clutch nuts 2 turns (Figure 35).

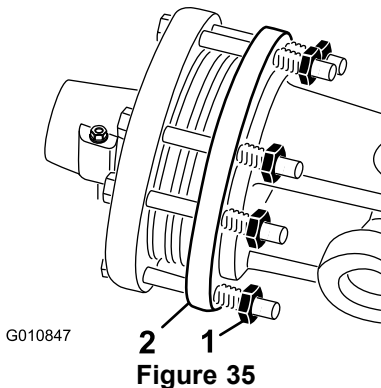


Figure 35

- 1. Clutch nut
- 2. Clutch

stopping the PTO. Turn back the nuts an additional 2 turns.

Note: Do not allow the clutch to slip for an extended amount of time.

- If the clutch continues to slip after turning back the nuts, tighten each nut an addition 1/4 turn until the slipping ceases. Do not overtighten the nuts as shaft damage may occur.

Checking the Coring Head Fastener Torque

Service Interval: After the first 8 hours

Every 50 hours

Using the chart below, to determine the torque of the crank pin nuts and the hinge bolts (Figure 36). These are the two most crucial areas of the machine where loss of torque will cause damage to the crankshaft almost immediately.

	Models SR54, SR54-S, SR70 & SR72-S	SR72
Crank Shaft Nut	950 ft-lbs.	1200 ft-lbs.
Crank Pin Nut	950 ft-lbs.	950 ft-lbs.
Hinge Bolt	265 ft-lbs.	300 ft-lbs.

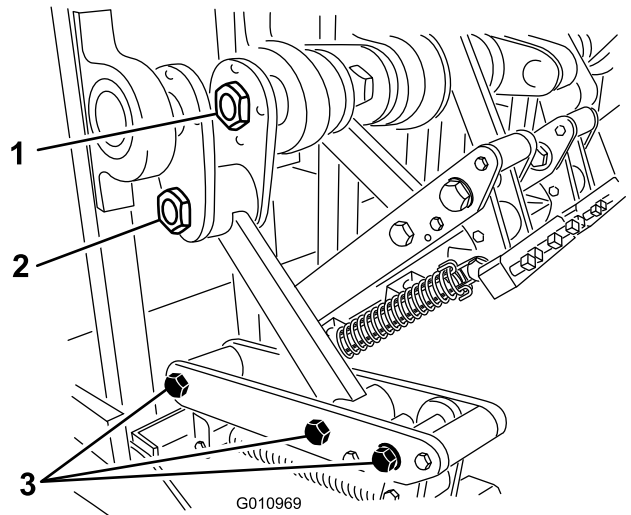


Figure 36

- 1. Crank shaft nut
- 2. Crank pin nut
- 3. Hinge bolts

- At the start of the new season, start the PTO and allow the clutch to slip for a few seconds before

Checking the Springs

Service Interval: Before each use or daily

Check the springs for crossed or broken wires (Figure 37). Crossed or broken spring wires will cause an erratic hole pattern in the turf.

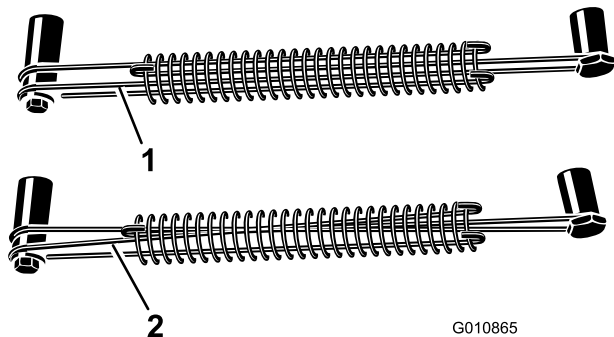


Figure 37

1. Correct spring wires 2. Crossed spring wires

Note: Replacement wires are included with the aerator. The wires are considered a consumable item.

Adjusting the Hole Spacing

The forward hole spacing is determined by the tractor's gear ratio (or the hydrostatic traction pedal). Changing the engine RPM does not change the forward hole spacing.

The lateral hole spacing is determined by the number of tines in the tine heads.

Removing the Aerator from the Tractor

1. Stop the aerator on a level surface, not on a slope.
2. Disengage the PTO and engage the parking brake.
3. Raise the aerator roller(s) 3-6 inches off ground. Place support blocks under the roller(s).
4. Stop the engine and remove the key from ignition switch.
5. Before leaving the Operator's seat on tractor, wait for engine and all moving parts to stop.
6. Remove the tines.
7. Install the storage stand.
8. Slowly lower aerator until storage stands contact ground.
9. Remove the pin securing the top link to the aerator bracket. Retain pin with aerator. Also, on models with a hydraulic top link, disconnect the hydraulic

hoses and the connecting link from the tractor. Cap the hydraulic hoses. Store these components with the aerator.

10. Disconnect the safety shield chains from PTO shaft.
11. Pull back on the lock collar to disconnect the power shaft from the tractor PTO shaft.
12. Slide the PTO shaft back and remove from tractor.
13. Connect the PTO safety chain to the aerator to prevent the PTO shaft from contacting the ground.
14. Remove the pins securing the lower link arms to the aerator brackets. Retain pins with aerator.

Trouble Shooting

Problem	Solution
Springs are breaking or not pulling back the head to normal position.	Slow the PTO speed of the tractor. The longer and heavier the tines, the greater the centrifugal force on the head. Check for crossed or broken spring wires.
Holes are elongated or picking.	Adjust the angle of the tine or change the tractor ground speed. Make sure that the aerator can be lowered at least 2 inches below flat ground level to allow for undulation.
Tines are hitting the ground with an erratic pattern.	<ul style="list-style-type: none"> • Check for crossed or broken spring wires. • Slow the PTO speed of the tractor.
PTO clutch slips excessively.	Adjust tines to shallow depth. Replace PTO clutches. Review clutch adjustment procedure.
Turf is pulling up with coring tines.	Shallow-rooted turf may require solid tines the first time.
The soil is too hard for full penetration.	Aerate at a depth that the machine can achieve, water overnight, and then increase the depth. Repeat if necessary until soil can be aerated at desired depth.
Coring tines are breaking.	You are trying to get too much depth for the soil condition. See above and aerate to a shallower depth.
Tines will not stay in the head.	Tighten the tine holder bolts; do not use jam nuts or impact wrench. If the bolt will not hold the tine, replace it.
Tines pull the soil up when the machine is raised.	Raise the machine part of the way out of the soil before disengaging the PTO.
The machine will not turn.	Make sure the PTO, drive shaft and drive chains are working properly.
The tractor has difficulty lifting the aerator.	Move tractor lift arms 3" (76.19 mm) to 4" (101.6 mm) closer to the aerator. Make sure the tractor has the capacity to lift the aerator.
The hydraulic top link cylinder is spongy. (It "gives" and moves in and out a short span when force is applied).	Air is in the cylinder or lines and must be bled out.
Machine is noisy or knocking.	<ul style="list-style-type: none"> • Crank pin nut has vibrated loose. • Chains are too loose. • Bolts on the bottom of the frame at the rear of the main arm have vibrated loose. • Check oil level in gearbox.
The hydraulic top link cylinder can not be fully retracted (PTO shaft jams).	The PTO shaft is too long for your tractor and should be cut to the correct length.
The tractor is difficult to steer when in transport.	<ul style="list-style-type: none"> • Add weight to the front of the tractor. • Check tire pressure and adjust as required.

Storage

At the end of an aerating season or when the aerator will not be used for a long period, it is good practice to carry out the following preventative maintenance.

1. Clean off any dirt or grease that may have accumulated on the aerator or any of the moving parts.
2. Remove and clean out tines. Coat tines with oil to prevent rusting during storage.
3. Open the hood and clean out the inside of the machine.
4. Lubricate all grease fittings and tine fastener screw threads.
5. Store the machine on the provided storage stands on a hard, dry surface.
6. Loosen the PTO clutch bolts two turns.
7. Connect the PTO safety chain to the aerator in stored position to prevent damage or remove the PTO and store under the hood to minimize corrosion.
8. Paint the roller and touch-up any other scratches on the painted surfaces.
9. Replace any missing or damaged decals.
10. Store the aerator inside a dry secure building. Inside storage will reduce maintenance, give a longer working life and increase the residual value of the machine. If inside storage is not available, cover with a heavy sheet or tarpaulin and secure tightly.

Notes:



Toro Commercial Aerator Products Warranty

A Two-Year Limited Warranty

Conditions and Products Covered

The Toro Company and its affiliate, Toro Warranty Company, pursuant to an agreement between them, jointly warrant your Toro Hydroject or ProCore Aerator ("Product") to be free from defects in materials or workmanship for two years or 500 operational hours*, whichever occurs first. Where a warrantable condition exists, we will repair the Product at no cost to you including diagnosis, labor, parts, and transportation. This warranty begins on the date the Product is delivered to the original retail purchaser.

* Product equipped with hour meter

Instructions for Obtaining Warranty Service

You are responsible for notifying the Commercial Products Distributor or Authorized Commercial Products Dealer from whom you purchased the Product as soon as you believe a warrantable condition exists. If you need help locating a Commercial Products Distributor or Authorized Dealer, or if you have questions regarding your warranty rights or responsibilities, you may contact us at:

Toro Commercial Products Service Department
Toro Warranty Company
8111 Lyndale Avenue South
Bloomington, MN 55420-1196
952-888-8801
E-mail: commercial.warranty@toro.com

Owner Responsibilities

As the Product owner, you are responsible for required maintenance and adjustments stated in your *Operator's Manual*. Failure to perform required maintenance and adjustments can be grounds for disallowing a warranty claim.

Items and Conditions Not Covered

Not all product failures or malfunctions that occur during the warranty period are defects in materials or workmanship. This warranty does not cover the following:

- Product failures which result from the use of non-Toro replacement parts, or from installation and use of add-on, or modified non-Toro branded accessories and products. A separate warranty may be provided by the manufacturer of these items.
- Product failures which result from failure to perform recommended maintenance and/or adjustments. Failure to properly maintain your Toro product per the Recommended Maintenance listed in the *Operator's Manual* can result in claims for warranty being denied.
- Product failures which result from operating the Product in an abusive, negligent or reckless manner.
- Parts subject to consumption through use unless found to be defective. Examples of parts which are consumed, or used up, during normal Product operation include, but are not limited to, brake pads and linings, clutch linings, blades, reels, rollers and bearings (sealed or greasable), bedknives, aerator crankshaft and stomper arm bearings, tines, spark plugs, castor wheels and bearings, tires, filters, belts, and certain sprayer components such as diaphragms, nozzles, and check valves, etc.

- Failures caused by outside influence. Items considered to be outside influence include, but are not limited to, weather, storage practices, contamination, use of unapproved coolants, lubricants, additives, fertilizers, water, or chemicals, etc.
- Normal noise, vibration, wear and tear, and deterioration.
- Normal "wear and tear" includes, but is not limited to, damage to seats due to wear or abrasion, worn painted surfaces, scratched decals or windows, etc.

Parts

Parts scheduled for replacement as required maintenance are warranted for the period of time up to the scheduled replacement time for that part. Parts replaced under this warranty are covered for the duration of the original product warranty and become the property of Toro. Toro will make the final decision whether to repair any existing part or assembly or replace it. Toro may use remanufactured parts for warranty repairs.

Maintenance is at Owner's Expense

Engine tune-up, lubrication cleaning and polishing, replacement of filters, coolant, and completing Recommended Maintenance are some of the normal services Toro products require that are at the owner's expense.

General Conditions

Repair by an Authorized Toro Distributor or Dealer is your sole remedy under this warranty.

Neither The Toro Company nor Toro Warranty Company is liable for indirect, incidental or consequential damages in connection with the use of the Toro Products covered by this warranty, including any cost or expense of providing substitute equipment or service during reasonable periods of malfunction or non-use pending completion of repairs under this warranty. Except for the Emissions warranty referenced below, if applicable, there is no other express warranty. All implied warranties of merchantability and fitness for use are limited to the duration of this express warranty.

Some states do not allow exclusions of incidental or consequential damages, or limitations on how long an implied warranty lasts, so the above exclusions and limitations may not apply to you. This warranty gives you specific legal rights, and you may also have other rights which vary from state to state.

Note regarding engine warranty:

The Emissions Control System on your Product may be covered by a separate warranty meeting requirements established by the U.S. Environmental Protection Agency (EPA) and/or the California Air Resources Board (CARB). The hour limitations set forth above do not apply to the Emissions Control System Warranty. Refer to the Engine Emission Control Warranty Statement printed in your *Operator's Manual* or contained in the engine manufacturer's documentation for details.

Countries Other than the United States or Canada

Customers who have purchased Toro products exported from the United States or Canada should contact their Toro Distributor (Dealer) to obtain guarantee policies for your country, province, or state. If for any reason you are dissatisfied with your Distributor's service or have difficulty obtaining guarantee information, contact the Toro importer.