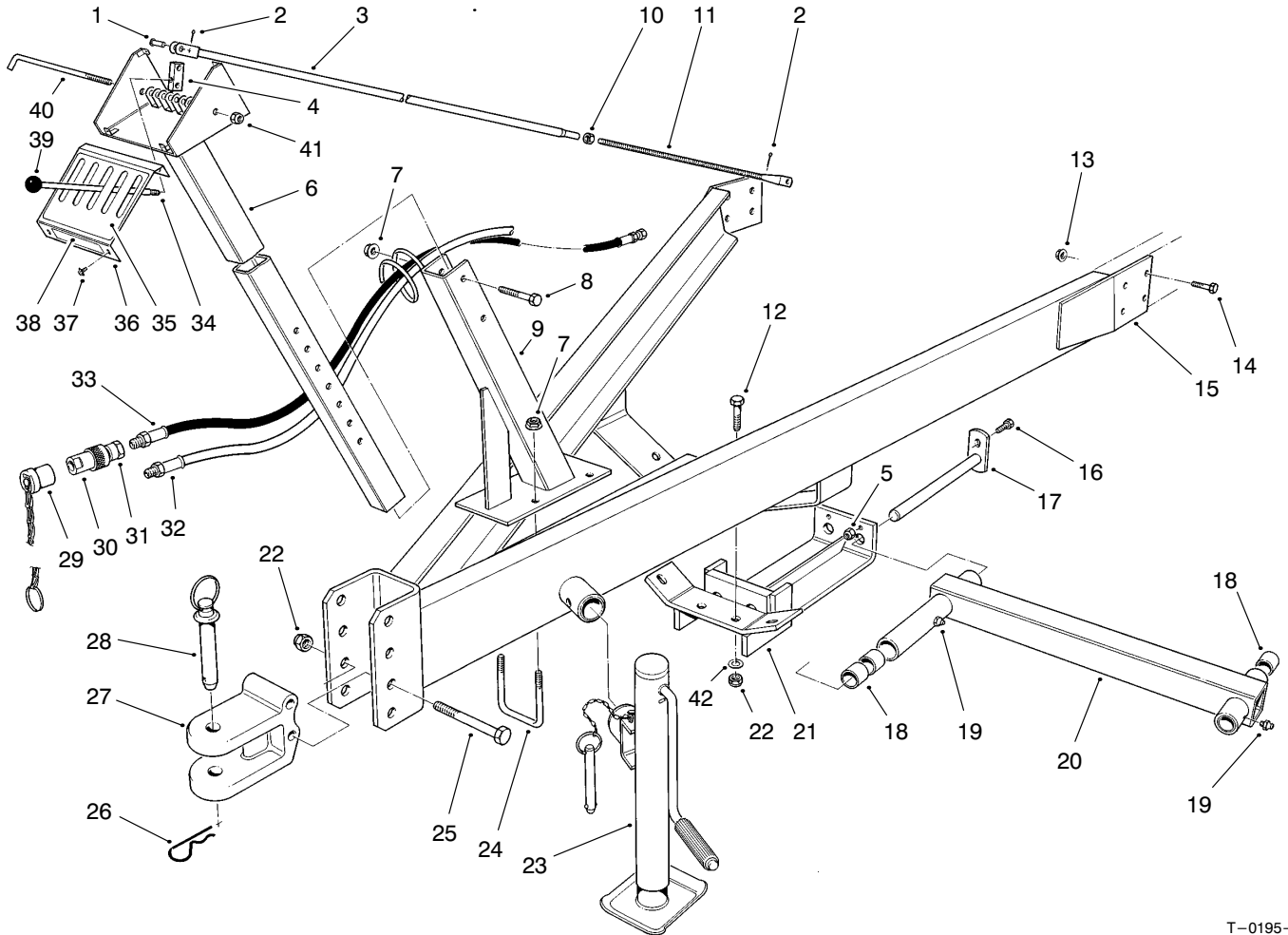




MODEL NO. 33452-40001 & UP

PARTS
CATALOG

**REELMASTER® TRANSPORT FRAME
5 TO 7 UNIT CONVERSION KIT**

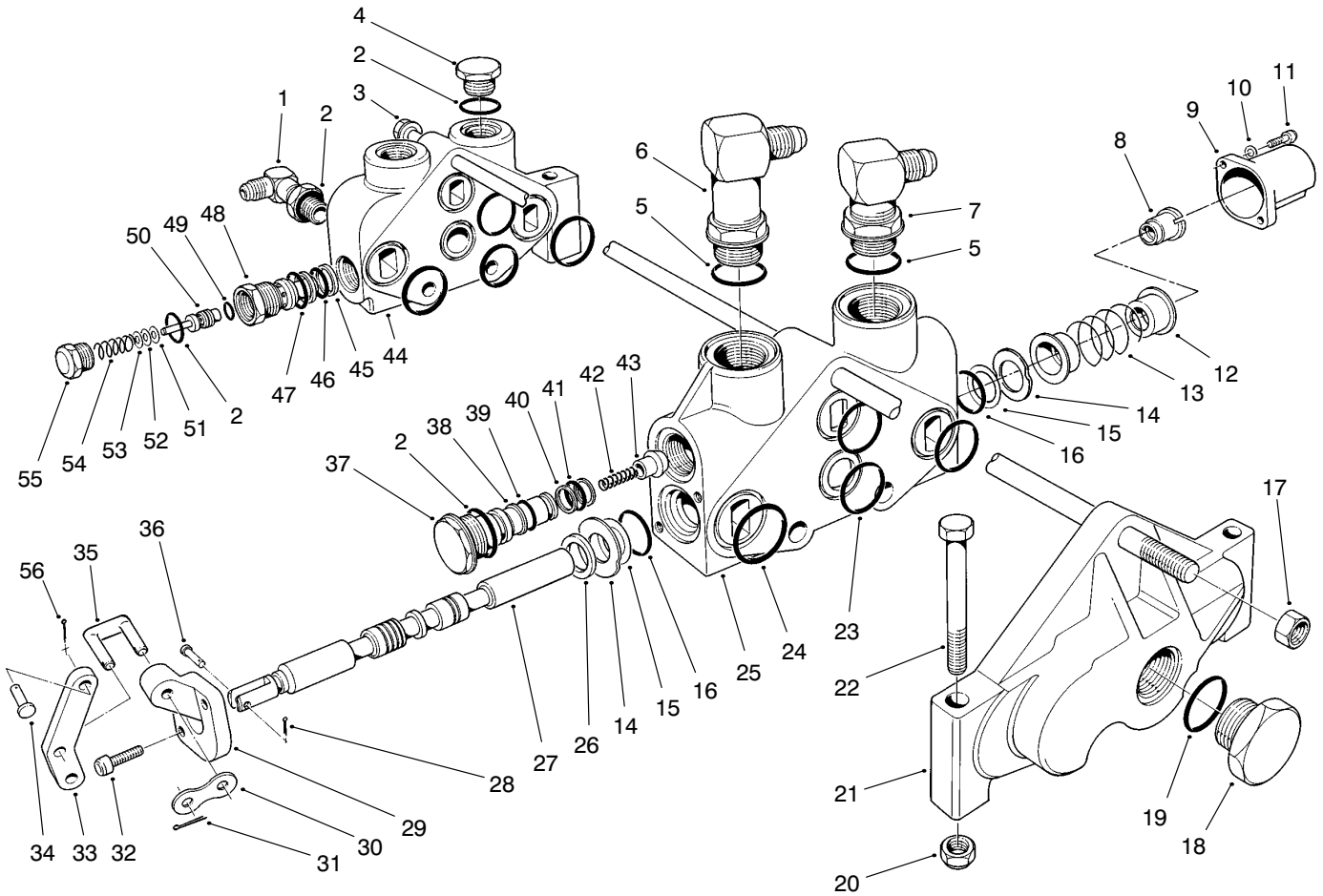


T-0195-2

CONTROL TOWER & LINKAGE ASSEMBLY†

Ref. No.	Part No.	Description	No. Used	Ref. No.	Part No.	Description	No. Used
1	283-6	Pin - Clevis	2	10	3217-8	Nut - Hex	2
2	3272-10	Pin - Cotter	4	11	47-3630	Rod - Linkage, Control	2
3	47-3880	Linkage - Control	2	34	47-3810	Lever - Valve	2
4	47-3620	Lever - Block, Pivot	2	39	3-0631	Knob	2

† See Form No.3316-568 for unlisted part numbers.



T-0198-2

HYDRAULIC VALVE ASSEMBLY NO. 63-8510†

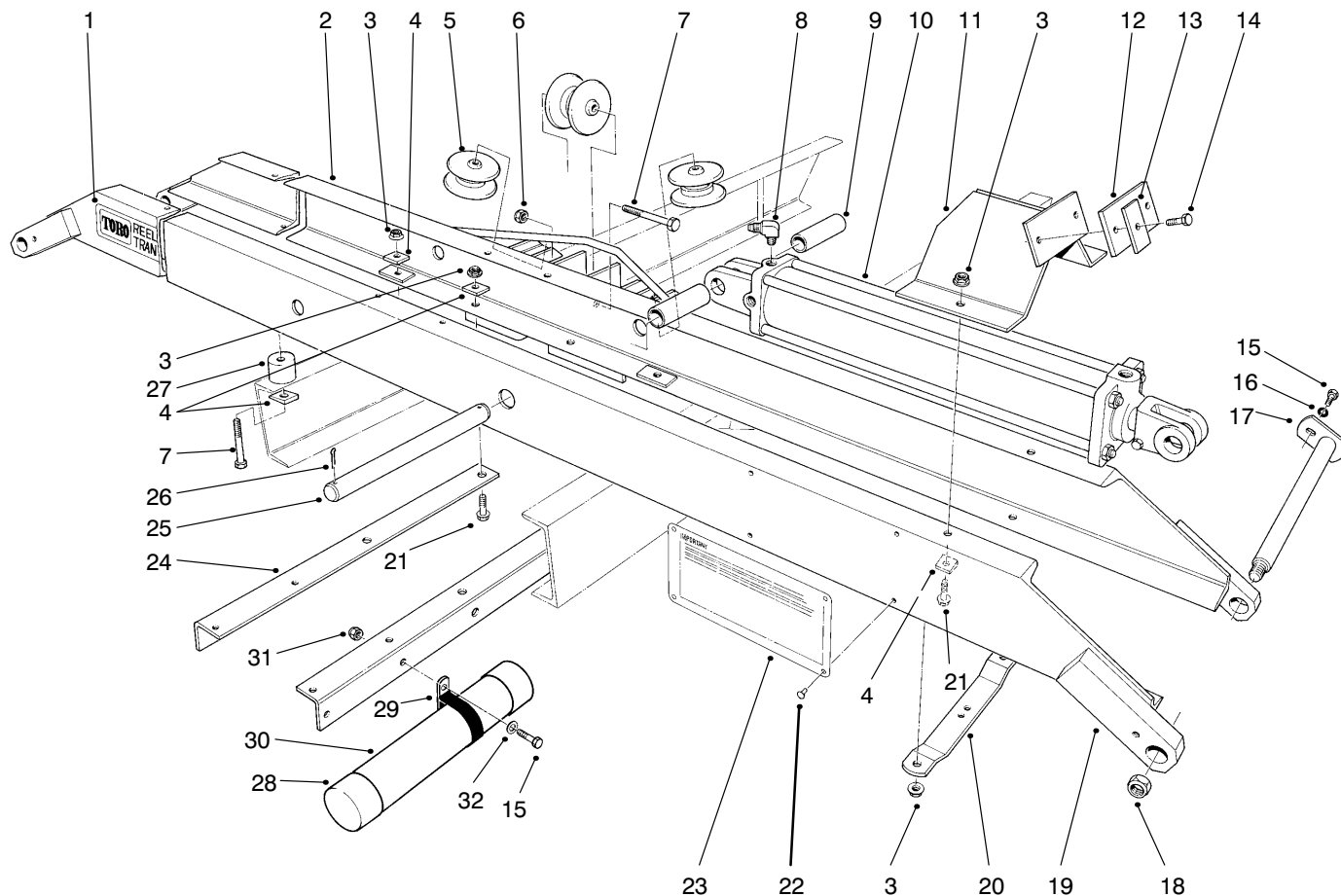
Ref. No.	Part No.	Description	No. Used
5	237-79	O-Ring	4
7	353-537	Elbow - Male (Incl. Ref. #5)	4
30	63-8760	Link - Connecting	2
31	3272-1	Pin - Cotter	4
33	52-5670	Lever - Control (Incl. Ref. #34)	2

Ref. No.	Part No.	Description	No. Used
34	283-62	Pin - Clevis	2
35	63-8760	Pin - Link	2
36	353-322	Pin	2
*	63-8760	Kit - Pin, Link (Incl. Ref. #30, 31, 35 & 36)	2

*Not Illustrated

Note: Quantities indicated are for one valve assembly.

† See Form No.3316-568 for unlisted part numbers.

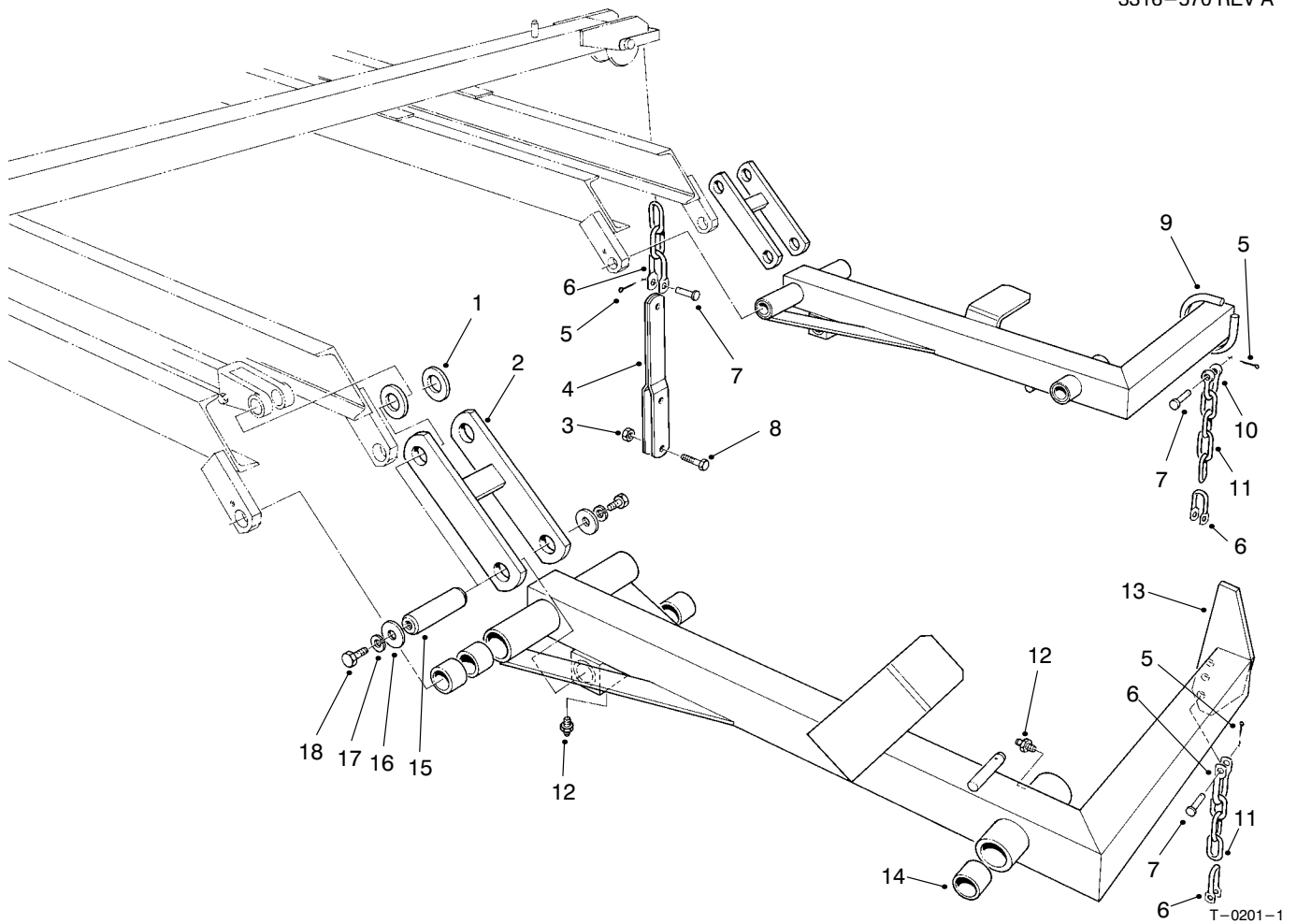


T-0199-1

FRONT CROSS CHANNEL ASSEMBLY†

Ref. No.	Part No.	Description	No. Used	Ref. No.	Part No.	Description	No. Used
3	32128-23	Nut - Flange	8	15	322-3	Screw - Cap, Hex. Hd.	2
4	3290-216	Washer - Tapered	8	16	3253-4	Washer - Lock	2
8	47-3840	Elbow - .094 Orifice	4	17	37-2760	Bail - Pin, Lift	2
9	20-4390	Spacer - Tube	4	18	3296-50	Nut - Lock	2
10	22-7530	Cylinder - Hydraulic, 12"	2	20	37-2910	Rest - Cylinder	2
11	11-5630	Stop - Arm	2	21	325-6	Screw - Cap, Hex. Hd.	8
12	11-4590	Pad - Bumper	2	25	3-0144	Shaft	2
13	11-5270	Washer - Bumper	4	26	3272-24	Pin - Cotter	4
14	322-6	Screw - Cap, Hex. Hd.	4				

† See Form No.3316-568 for unlisted part numbers.



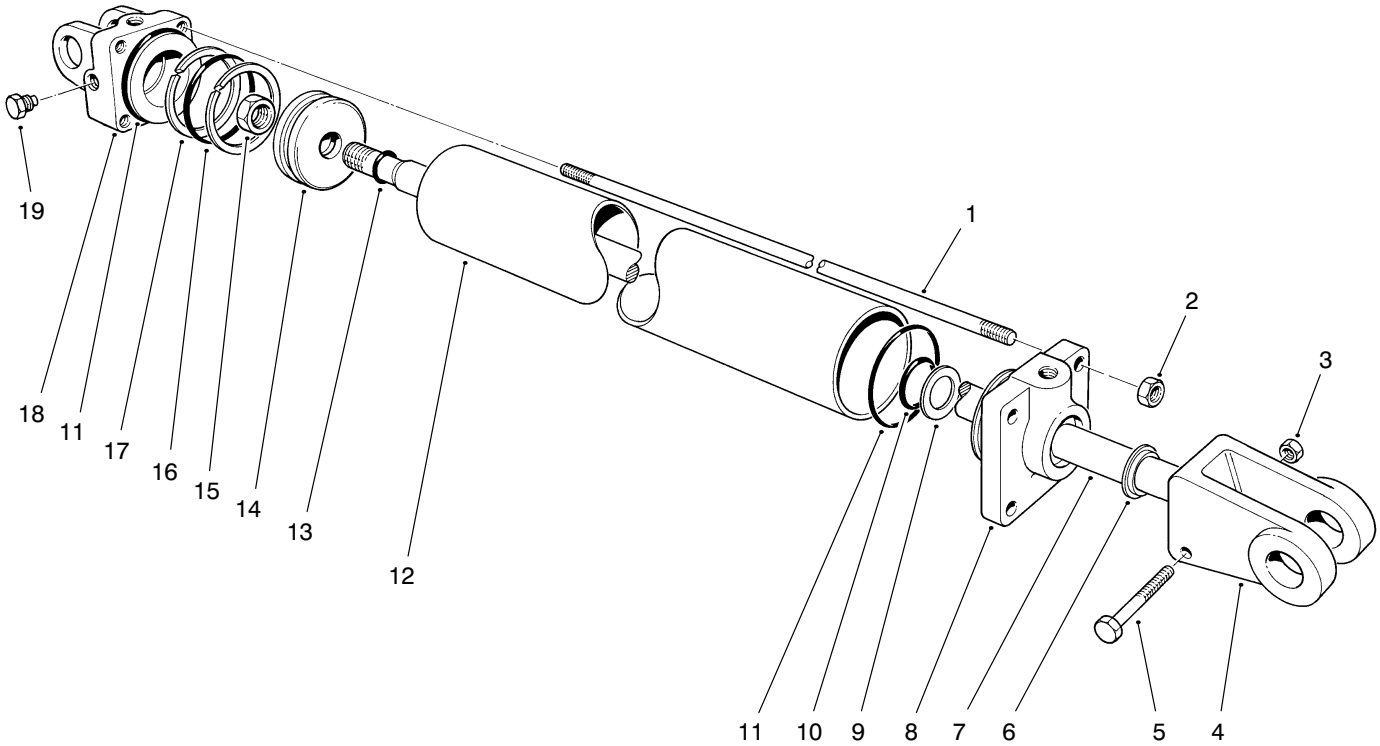
LIFT ARM ASSEMBLIES NO. 6-7†

Ref. No.	Part No.	Description	No. Used
1	3256-62	Washer - Flat	4
2	23-2610	Link	2
5	3272-10	Pin - Cotter	4
6	5-2942	Shackle - Long	4
7	283-10	Pin - Clevis	4
11	3-4636	Chain - Bail, Lift	2
12	302-5	Fitting - Grease	4
13	47-3590	Arm - Long, No. 6 Cutting Unit (Incl. Ref. #14)	1

Ref. No.	Part No.	Description	No. Used
*	47-3600	Arm - Long, No. 7 Cutting Unit (Incl. Ref. #14)	1
14	3-0348	Bushing	16
15	3-0128	Shaft	4
16	5-1720	Washer	8
17	3253-5	Washer - Lock	8
18	3211-4	Screw - Cap, Hex. Hd.	8

*Not Illustrated

† See Form No.3316-568 for unlisted part numbers.



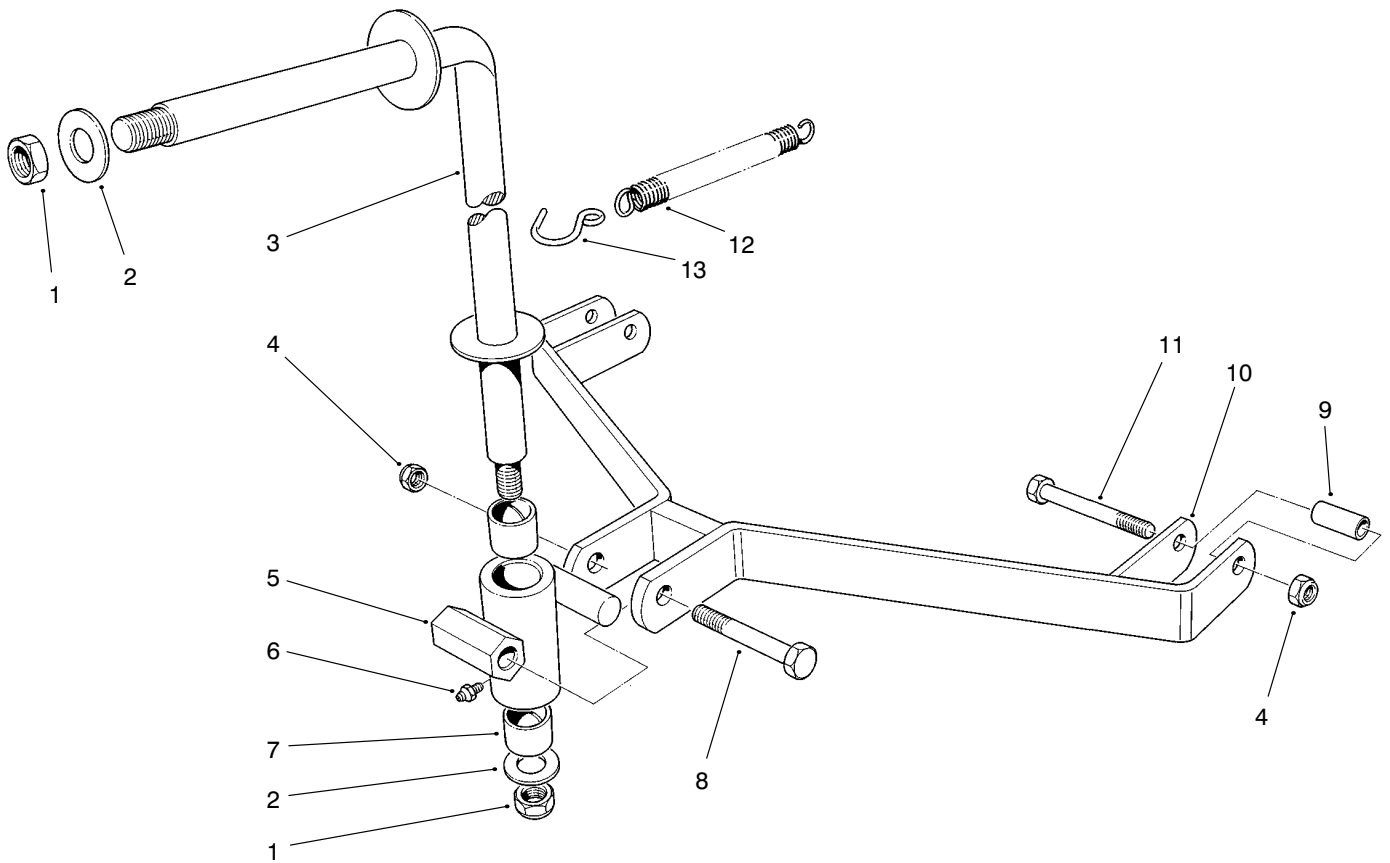
T-0202-2

HYDRAULIC CYLINDER 22-7530 (12")

Ref. No.	Part No.	Description	No. Used
1	22-8710	Tie Rod (Incl. Ref. #2)	4
2	3217-9	Nut - Hex.	4
3	32153-3	Nut - Lock	1
4	22-8680	Clevis Assembly	1
5	322-11	Screw - Cap, Hex. Hd.	1
6	22-8660	Wiper - Seal	1
7	22-8690	Rod - Piston	1
8	22-8630	Head	1
9	22-8650	Washer - Backup	1
10	22-8640	O-Ring	1
11	22-8550	O-Ring	2

Ref. No.	Part No.	Description	No. Used
12	22-7530	Barrel	1
13	22-8600	O-Ring	1
14	22-8590	Piston	1
15	22-8560	Nut - Lock	1
16	22-8570	O-Ring	1
17	22-8580	Washer - Backup	2
18	22-8540	Butt - Cap, End	1
19	281-2	Plug	1
*	22-8720	Kit - Seal (Incl. Ref. #6, 9-11, 13, 16 & 17)	1

*Not Illustrated
Note: Quantities indicated are for one cylinder.



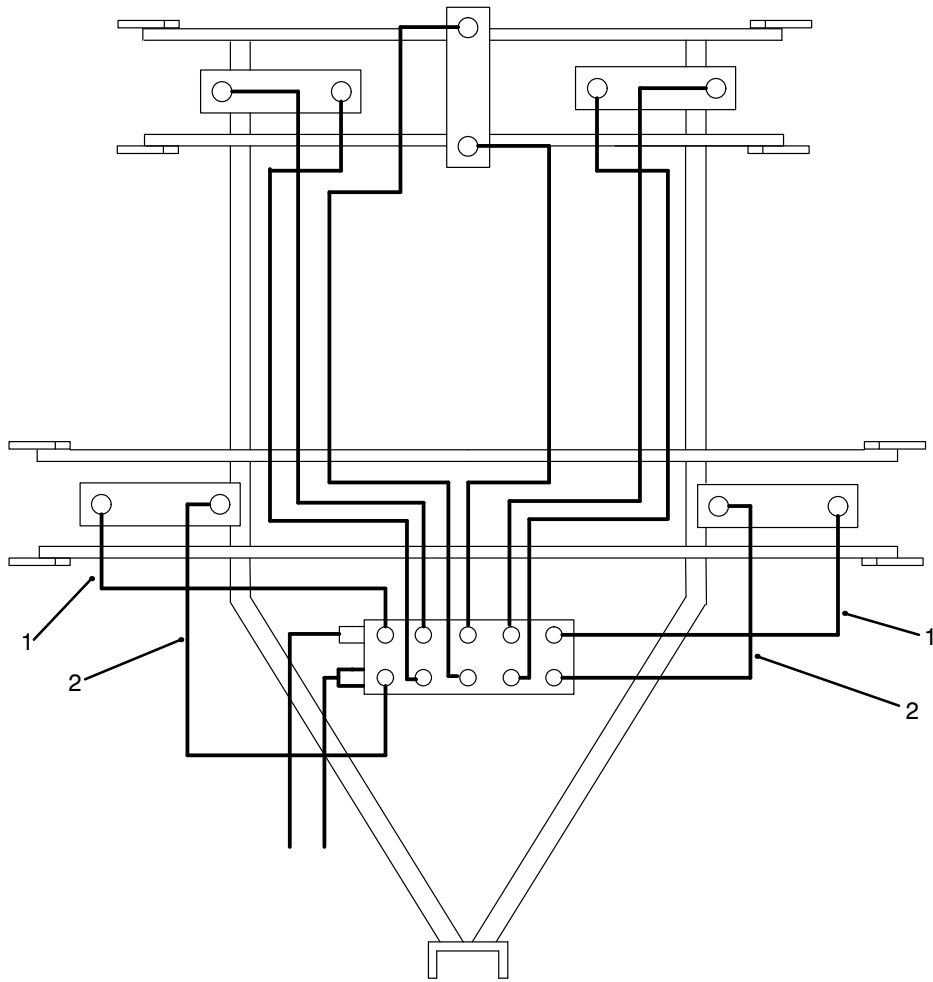
T-0203-2

LIFT BAIL ASSEMBLY

Ref. No.	Part No.	Description	No. Used
1	3296-50	Nut - Lock	4
2	3-8448	Washer - Thrust	4
*	28-8720	Bail - Lift, No. 6 & 7 Cutting Units	2
4	32153-5	Nut - Lock	6
5	6-1030	Housing Assembly (Incl. Ref. #6 & 7)	2
6	302-5	Fitting - Grease	2

Ref. No.	Part No.	Description	No. Used
7	3-0348	Bushing	4
8	325-17	Screw - Cap, Hex. Hd.	2
9	5-1091	Spacer	4
10	3-9280	Bar - Draw	2
11	325-14	Screw - Cap, Hex. Hd.	4
12	5-1706	Spring	2
13	3-2198	S-Hook	2

*Not Illustrated



T-1878-1

HYDRAULIC SCHEMATIC†

Ref. No.	Part No.	Description	No. Used
1	47-3750	Hydraulic Hose Assembly	2
2	47-3740	Hydraulic Hose Assembly	2

Ref. No.	Part No.	Description	No. Used

† See Form No.3316-568 for unlisted part numbers.

TORO PART NUMBER INDEX

Part No.	Description	Pg. Ref. No. No. Qty.	Part No.	Description	Pg. Ref. No. No. Qty.
3-0128	Shaft	5 15 4	47-3740	Hydraulic Hose Assembly	8 2 2
3-0144	Shaft	3 25 2	47-3750	Hydraulic Hose Assembly	8 1 2
3-0348	Bushing	7 7 4	47-3800	Strap - Locking	4 5 1
3-0348	Bushing	5 14 16	47-3810	Lever - Valve	1 34 2
3-0631	Knob	1 39 2	47-3840	Elbow - .094 Orifice	3 8 4
3-2198	S-Hook	7 13 2	47-3880	Linkage - Control	1 3 2
3-4636	Chain - Bail, Lift	5 11 2	52-5670	Lever - Control	2 33 2
3-8448	Washer - Thrust	7 2 4	63-8760	Link - Connecting	2 30 2
3-9280	Bar - Draw	7 10 2	63-8760	Pin - Link	2 35 2
5-1091	Spacer	7 9 4	63-8760	Kit - Pin, Link	2 * 2
5-1706	Spring	7 12 2	237-79	O-Ring	2 5 4
5-1720	Washer	5 16 8	281-2	Plug	6 19 1
5-2942	Shackle - Long	5 6 4	283-6	Pin - Clevis	1 1 2
6-1030	Housing Assembly	7 5 2	283-10	Pin - Clevis	5 7 4
11-4590	Pad - Bumper	3 12 2	283-62	Pin - Clevis	2 34 2
11-5270	Washer - Bumper	3 13 4	302-5	Fitting - Grease	7 6 2
11-5630	Stop - Arm	3 11 2	302-5	Fitting - Grease	5 12 4
20-4390	Spacer - Tube	3 9 4	322-3	Screw - Cap, Hex. Hd.	3 15 2
22-7530	Cylinder - Hydraulic, 12"	3 10 2	322-6	Screw - Cap, Hex. Hd.	3 14 4
22-7530	Barrel	6 12 1	322-11	Screw - Cap, Hex. Hd.	6 5 1
22-8540	Butt - Cap, End	6 18 1	325-6	Screw - Cap, Hex. Hd.	3 21 8
22-8550	O-Ring	6 11 2	325-14	Screw - Cap, Hex. Hd.	7 11 4
22-8560	Nut - Lock	6 15 1	325-17	Screw - Cap, Hex. Hd.	7 8 2
22-8570	O-Ring	6 16 1	3211-4	Screw - Cap, Hex. Hd.	5 18 8
22-8580	Washer - Backup	6 17 2	3217-8	Nut - Hex	1 10 2
22-8590	Piston	6 14 1	3217-9	Nut - Hex.	6 2 4
22-8600	O-Ring	6 13 1	3253-4	Washer - Lock	3 16 2
22-8630	Head	6 8 1	3253-5	Washer - Lock	5 17 8
22-8640	O-Ring	6 10 1	3256-62	Washer - Flat	5 1 4
22-8650	Washer - Backup	6 9 1	3272-1	Pin - Cotter	2 31 4
22-8660	Wiper - Seal	6 6 1	3272-10	Pin - Cotter	5 5 4
22-8680	Clevis Assembly	6 4 1	3272-24	Pin - Cotter	3 26 4
22-8690	Rod - Piston	6 7 1	3272-10	Pin - Cotter	1 2 4
22-8710	Tie Rod	6 1 4	3290-216	Washer - Tapered	3 4 8
22-8720	Kit - Seal	6 * 1	3290-355	Pin - Cotter, Hair	4 4 2
23-2610	Link	5 2 2	3296-50	Nut - Lock	7 1 4
28-8720	Bail - Lift, No. 6 & 7	7 * 2	3296-50	Nut - Lock	3 18 2
37-2760	Bail - Pin, Lift	3 17 2	32128-23	Nut - Flange	3 3 8
37-2910	Rest - Cylinder	3 20 2	32153-3	Nut - Lock	6 3 1
47-3590	Arm - Long, No. 6 Cutting	5 13 1	32153-5	Nut - Lock	7 4 6
47-3600	Arm - Long, No. 7 Cutting	5 * 1	353-322	Pin	2 36 2
47-3620	Lever - Block, Pivot	1 4 2	353-537	Elbow - Male	2 7 4
47-3630	Rod - Linkage, Control	1 11 2			

*Not Illustrated

PRODUCT CHANGES

In an effort to make improvements available to TORO owners as quickly as possible, minor changes are incorporated into Toro's products from time to time that do not become immediately shown in the Parts Catalog. If such a change has been made in your unit, which is not reflected in your manual, see your TORO Distributor or his Authorized TORO Service Dealer for information and part numbers.

IDENTIFICATION AND ORDERING

MODEL AND SERIAL NUMBERS

The Reelmaster Transport Frame has two identification numbers; a model number and a serial number. The two numbers are stamped on a plate which is located on the main frame. In any correspondence concerning the Reelmaster Transport Frame, supply model and serial numbers to assure that correct information and replacement parts are obtained.

To order replacement parts from an Authorized TORO Service Dealer, supply the following information:

1. Model and serial number of the Reelmaster Transport Frame.
2. Part number, description, and the quantity of part(s) desired.

NOTE: Do not order by reference number if a parts catalog is being used; use the PART NUMBER.

TABLE OF CONTENTS

Description	Page	Description	Page
Control Tower & Linkage Assembly	1	Hydraulic Cylinder No. 22-7530	6
Hydraulic Valve Assembly No. 63-8510	2	Lift Bail Assembly	7
Front Cross Channel Assembly	3	Hydraulic Schematic	8
Rear Cross Channel Assembly	4	TORO Part Number Index	9
Liftarm Assemblies No. 6-7	5		

