



## Snowthrower Drive and Mounting Kit Groundsmaster® 3320/3280-D Traction Unit

Model No. 114-4140

### Parts Catalog

#### Ordering Replacement Parts

To order replacement parts, please supply the part number, the quantity, and the description of each part desired.

#### Understanding Reference Numbers

Each Identified part in an illustration has a reference number. The reference number for a part also appears in the parts list, along with other information about the part.

This catalog uses two special reference number formats, one to indicate parts in a service assembly and another to indicate the quantity of a given part in an illustration.

#### Service Assembly Reference Numbers

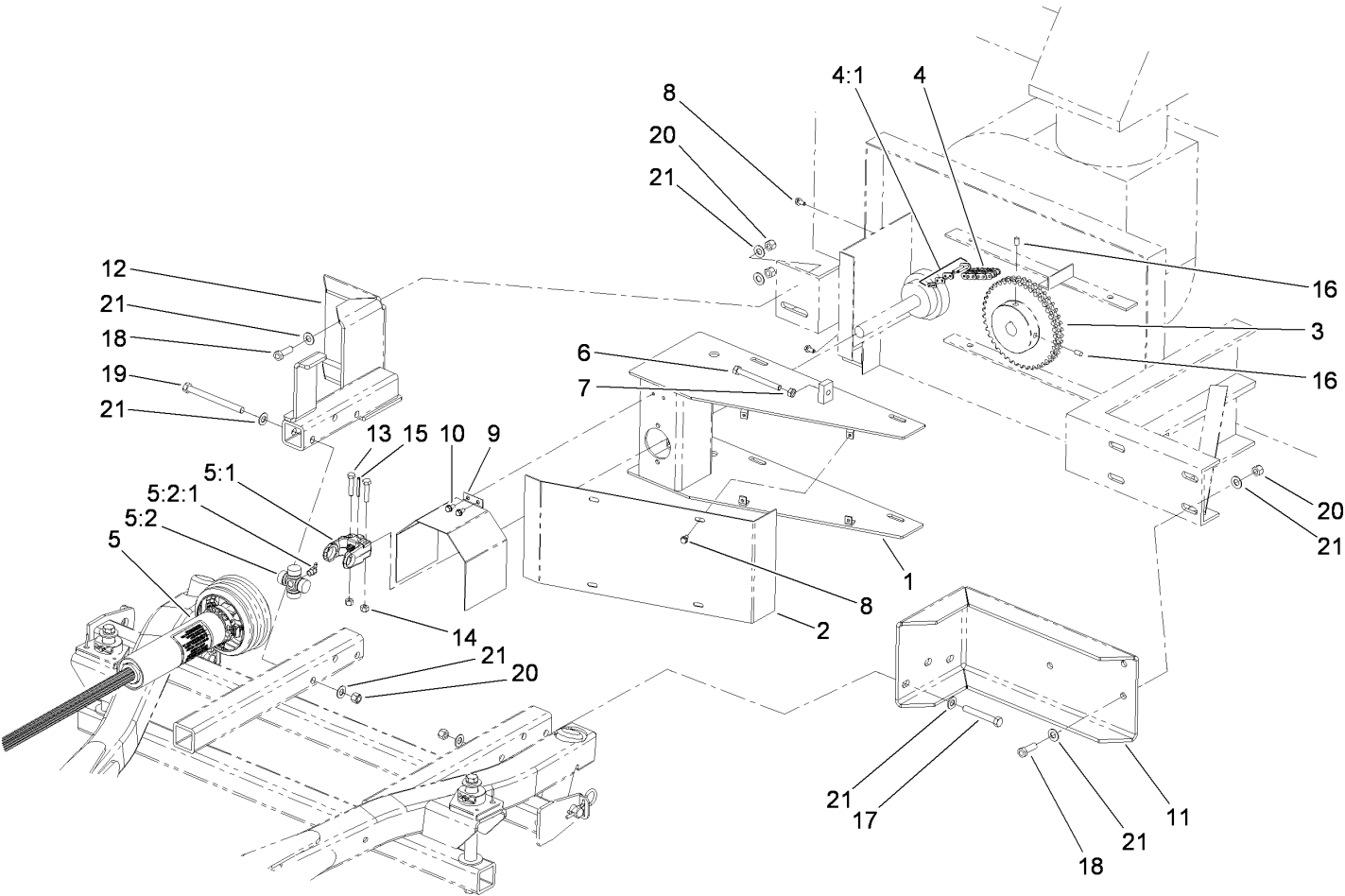
Parts in service assemblies have reference numbers in the form a:b. The a represents the reference number of the entire service assembly and the b represents a sequential number unique to each part within the service assembly.

For example, a wheel assembly might be identified by reference number 6, the tire by 6:1, the valve by 6:2, and the wheel by 6:3. When you order the assembly identified by reference number 6, you receive all parts identified by reference numbers 6:1, 6:2, and 6:3. However, you may also order any part individually. Reference numbers of this type appear in illustrations and in part lists.

#### Reference Numbers Indicating Quantity

In an illustration, if a reference number indicates more than one part, the reference number has the form nX y. The n represents the quantity of the part, the X is the multiplication symbol, and the y represents the reference number.

For example, in an illustration, the reference number 2X 37 means that two of the parts identified by reference number 37 are indicated.



# Snowthrower Drive and Mounting Assembly

Ref	Part No.	Qty.	Description
1	114-4115-01	1	Mount-Chain Drive
2	114-4139-01	1	Cover
3	115-4922	1	Sprocket-Double, 42T
4	115-4923	1	Chain-Roller
4:1	115-4924	1	Link-Master
5	110-8525	1	Shaft Half ASM
5:1	54-9040	1	Yoke-End
5:2	54-9180	1	U-Joint Kit
5:2:1	62-3820	1	Fitting-Grease
6	107-4026	1	Screw-HH
7	3217-7	1	Nut-Hex
8	3234-13	6	Screw-HHF
9	114-4145-01	1	Guard
10	32144-4	2	Screw-HWH
11	114-4144-01	1	Bracket
12	114-4146-01	1	Mounting-Bracket
13	322-7	2	Screw-HH
14	3296-29	2	Nut-Lock, NI
15	32121-34	1	Pin-Roll
16	3246-4	2	Screw-Set
17	3212-12	3	Screw-HH
18	3212-5	6	Screw-HH
19	3212-19	3	Screw-HH
20	3296-7	12	Nut-Lock

Ref	Part No.	Qty.	Description
21	3256-25	24	Washer-Flat