



LX426 Lawn Tractor

Model No. 13AL60RG044 - 1L107H10100 and up.

Model No. 13RL60RG044 - 1L107H10100 and up.

Model No. 13RL60RG244 - 1L107H10100 and up.

Parts Catalog

Ordering Replacement Parts

To order replacement parts, please supply the part number, the quantity, and the description of each part desired.

Understanding Reference Numbers

Each identified part in an illustration has a reference number. The reference number for a part also appears in the parts list, along with other information about the part.

This catalog uses two special reference number formats, one to indicate parts in a service assembly and another to indicate the quantity of a given part in an illustration.

Service Assembly Reference Numbers

Parts in service assemblies have reference numbers in the form a:b. The a represents the reference number of the entire service assembly and the b represents a sequential number unique to each part within the service assembly.

For example, a wheel assembly might be identified by reference number 6, the tire by 6:1, the valve by 6:2, and the wheel by 6:3. When you order the assembly identified by reference number 6, you receive all parts identified by reference numbers 6:1, 6:2, and 6:3. However, you may also order any part individually. Reference numbers of this type appear in illustrations and in part lists.

Reference Numbers Indicating Quantity

In an illustration, if a reference number indicates more than one part, the reference number has the form nX y. The n represents the quantity of the part, the X is the multiplication symbol, and the y represents the reference number.

For example, in an illustration, the reference number 2X 37 means that two of the parts identified by reference number 37 are indicated.

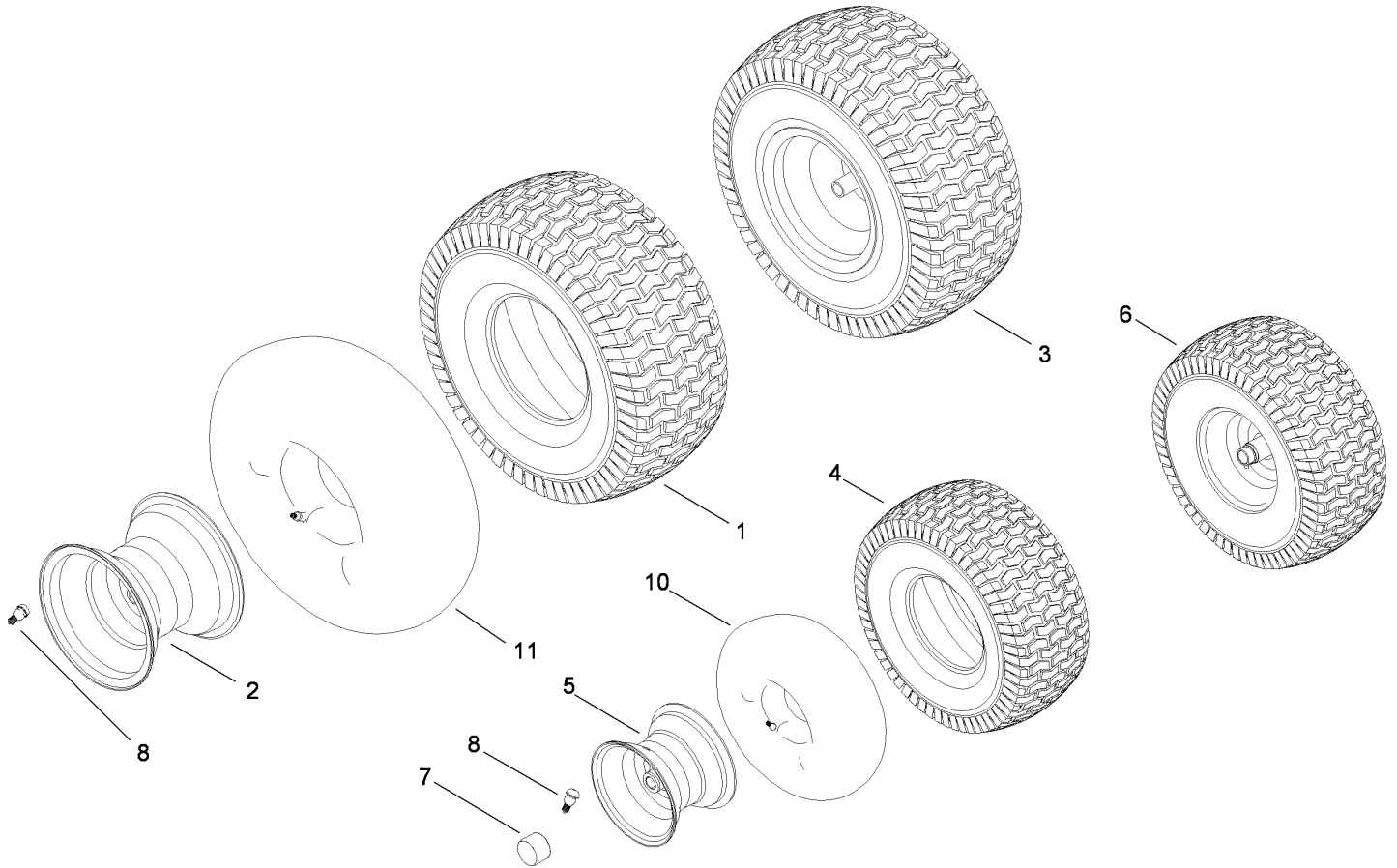
Contents

Description	Page	Description	Page
Front and Rear Wheel Assembly 3	Single Speed Transmission Assembly No. 112-6083 10
Steering Shaft and Front Axle Assembly 4	Deck Assembly 12
Frame, Battery and PTO Engage Assembly 5	Fuel Tank, Hood and Dash Assembly 14
Seat and Fender Assembly 7	Muffler and Guard Assembly 15
Transmission, Brake and Traction Pedal Assembly 8	Attachments and Accessories List 16

Part Description Abbreviations

Part descriptions in this catalog may include the following abbreviations.

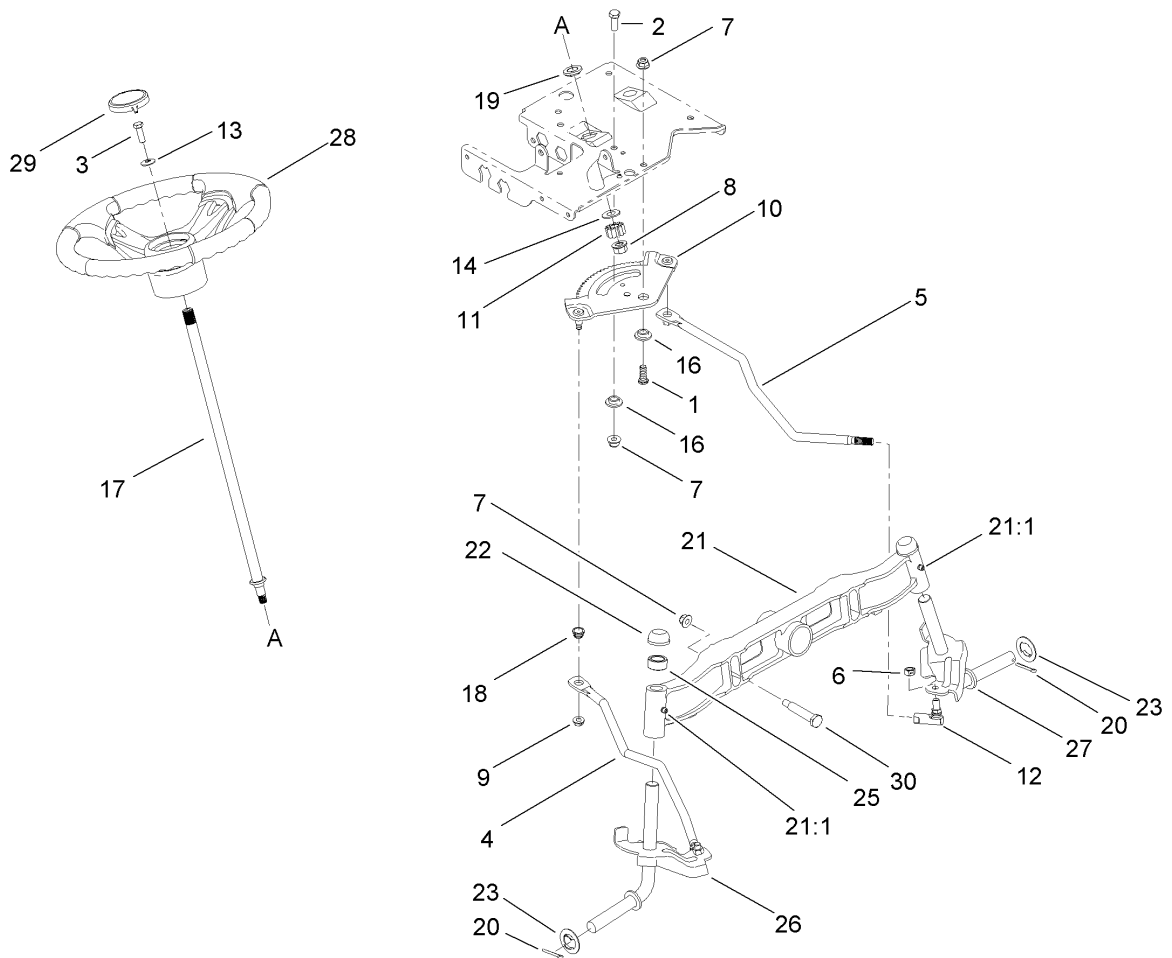
AR. as required	HYD. hydraulic
ASM. assembly	LH. left hand
BBC. blade brake clutch	NI. nylon insert
CARR. carriage	NPTF. national pipe thread fine
DEG. degrees	PFH. phillips flat head
EXT. external	PPH. phillips pan head
FH. flat head	PPHTF. phillips pan head thread forming
GA. gauge	PRH. phillips round head
HD. heavy-duty	PTH. phillips truss head
HF. hex flange	PTO. power-take-off
HH. hex head	RH. right hand
HHF. hex head flange	ROPS. roll-over protection system
HHFTF. hex head flange thread forming	SFH. slotted fillister head
HJ. hex jam	SHH. slotted hex head
HLH. hex lag head	SHWH. slotted hex washer head
HOC. height-of-cut	SPH. slotted pan head
HSBH. hex socket button head	SQH. square head
HSFH. hex socket flat head	SRH. slotted round head
HSH. hex socket head	STD. standard
HWH. hex washer head	TAP. self tapping
HWHTF. hex washer head thread forming	TTH. torx truss head



Front and Rear Wheel Assembly

Ref	Part No.	Qty.	Description
1	112-0713	1	Tire-Multi Trac
2	112-6093	1	Rim-Wheel, Rear
3	112-0496	1	Rear Wheel ASM
4	112-0576	1	Tire-Front
5	112-0468	1	Rim-Wheel, Front
6	112-0491	1	Front Wheel ASM
7	112-5968	1	Cap-Hub
8	112-0503	1	Valve-Air, Tubeless
10	232-39	1	Tube-Inner
11	93-3893	1	Tube-Inner

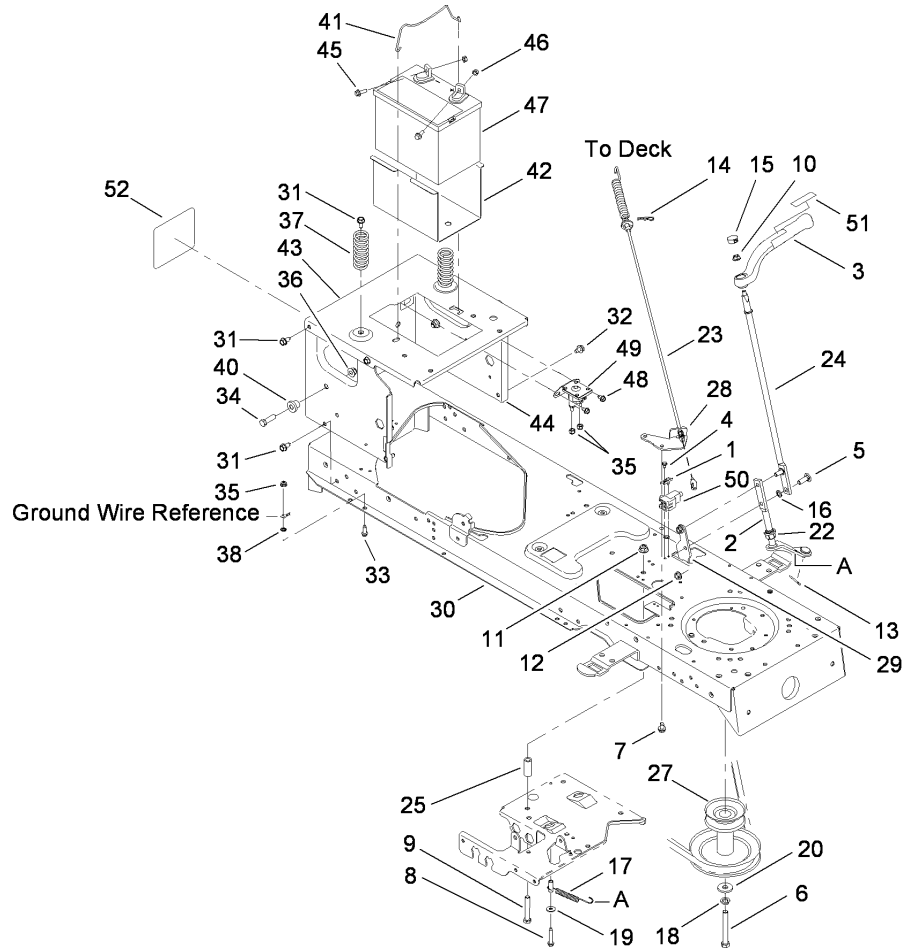
--	--	--	--



Steering Shaft and Front Axle Assembly

Ref	Part No.	Qty.	Description
1	112-0631	1	Screw-HH
2	112-0492	1	Screw-HH
3	112-0473	1	Screw-HH
4	112-0355	1	Link-Drag, RH
5	112-0346	1	Link-Drag, LH
6	112-0483	1	Nut-Hex, Lock
7	112-0668	1	Nut-Lock, Flange
8	112-0859	1	Nut-Lock, Flange
9	112-0511	1	Nut-Lock, Flange
10	112-0862	1	Gear-Steering
11	112-0863	1	Gear-Pinion, Steering
12	112-0917	1	Ball Joint ASM
13	112-0924	1	Washer-Flat
14	112-0925	1	Washer-Flat
16	112-0881	1	Spacer-Shoulder
17	112-6097	1	Shaft-Steering
18	112-0929	1	Bushing
19	112-6098	1	Bearing-Flange, Hex
20	112-0860	1	Pin-Cotter
21	112-6099	1	Pivot-Axle, Cast Iron
21:1	112-0926	1	Fitting-Grease
22	112-0323	1	Cap
23	112-5972	1	Washer-Flat
25	112-6136	1	Spacer

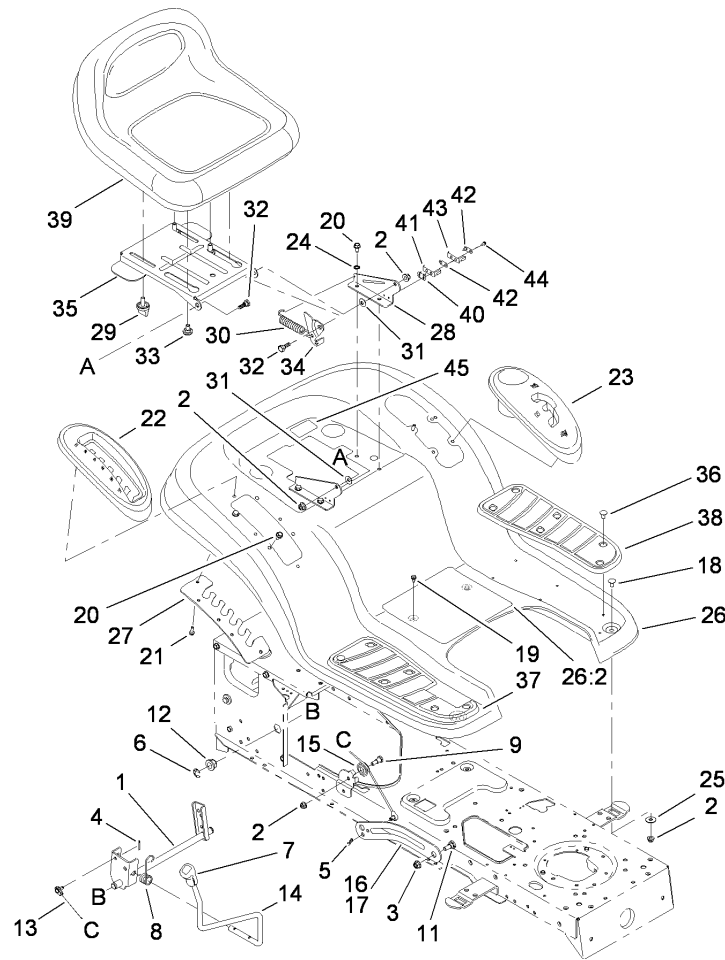
Ref	Part No.	Qty.	Description
26	112-0547	1	RH Axle ASM
27	112-0562	1	LH Axle ASM
28	112-6100	1	3 Spoke Wheel Steering ASM
29	112-3734	1	Cap-Wheel, Steering
30	112-0699	1	Bolt-Shoulder



Frame, Battery and PTO Engage Assembly

Ref	Part No.	Qty.	Description
1	112-0671	1	Plate-Switch
2	112-6007	1	Lever-Engage, PTO
3	112-6101	1	Knob PTO ASM
4	112-0651	1	Screw-TAP
5	112-0598	1	Bolt-CARR
6	112-6008	1	Screw-HH
7	112-0676	1	Screw-TAP
8	112-0843	1	Screw-HWH
9	112-0700	1	Screw-HH
10	112-6102	1	Nut-Flange, Lock
11	112-0668	1	Nut-Lock, Flange
12	112-0511	1	Nut-Lock, Flange
13	112-6010	1	Pin-Cotter
14	112-0398	1	Pin-Click
15	112-6103	1	Plug-Knob, PTO Lever
16	112-0645	1	Nut-Push
17	112-0567	1	Spring-Extension
18	112-0428	1	Washer-Lock
19	112-3695	1	Washer-Flat
20	112-0380	1	Washer-Flat
22	112-0384	1	Bearing-Flange, Hex (Split)
23	112-6137	1	Cable-Engage, Deck
24	112-6104	1	Rod-Engage, Deck
25	112-0433	1	Spacer

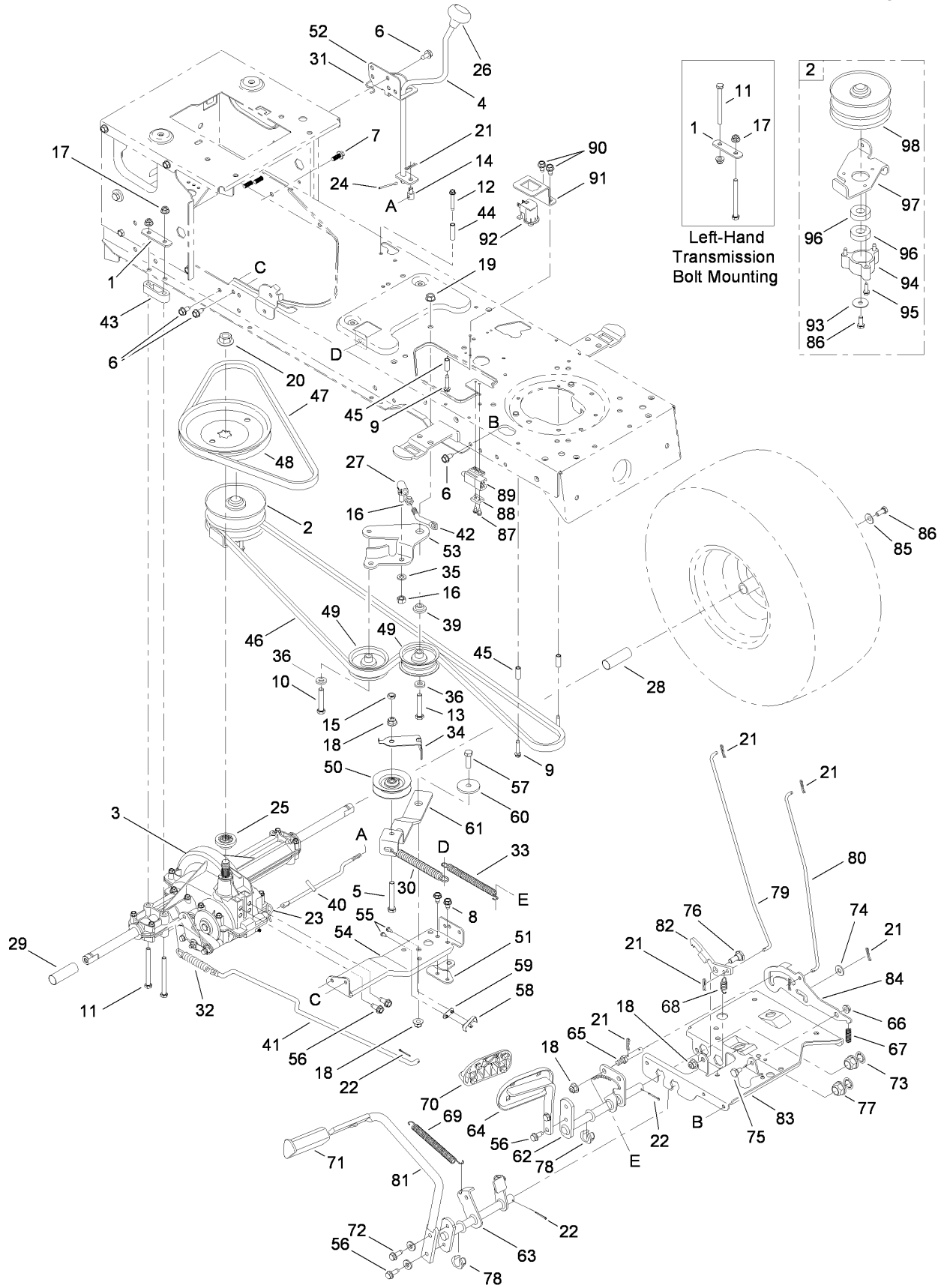
Ref	Part No.	Qty.	Description
27	112-0333	1	Pulley-Engine
28	112-6105	1	Bracket-Mount, Cable
29	112-0516	1	Bracket-Stop
30	112-5974	1	Lower Frame ASM
31	112-6070	1	Screw-TAP
32	112-0676	1	Screw-TAP
33	112-0587	1	Screw-TAP
34	112-0557	1	Screw-HH
35	112-0636	1	Nut-Lock, Flange
36	112-0668	1	Nut-Lock, Flange
37	112-0501	1	Spring-Compression
38	112-0703	1	Washer-Lock, External
40	112-0661	1	Spacer-Shoulder
41	112-0581	1	Rod-Holddown, Battery
42	112-0570	1	Tray-Battery
43	112-0647	1	Bracket-Frame, Seat
44	112-6107	1	Frame-Upper
45	112-1070	1	Bolt-Carriage
46	112-0546	1	Nut-Sems
47	112-0425	1	Battery-245, Cca (Dry Flat Top)
48	112-6108	1	Screw-TAP
49	112-6073	1	Solenoid-12V, 2 Post 2 Tab
50	112-0455	1	Switch-Interlock
51	112-1274	1	Decal-PTO, Manual



Seat and Fender Assembly

Ref	Part No.	Qty.	Description	Ref	Part No.	Qty.	Description
1	112-5969	1	Lift Shaft ASM	26	112-6112	1	Fender
2	112-0650	1	Nut-Lock, Flange	26:2	112-1262	1	Decal-Danger
3	112-0668	1	Nut-Lock, Flange	27	112-0629	1	Bracket-Adjusting, Lift
4	112-0459	1	Pin-Cotter	28	112-6046	1	Bracket-Mount, Seat
5	112-0568	1	Pin-Cotter	29	112-0409	1	Knob
6	112-0586	1	Ring-E	30	112-0616	1	Spring-Extension
7	112-0585	1	Grip-Handle	31	112-0435	1	Washer-Bell
8	112-0477	1	Spring-Torsion	32	112-0575	1	Bolt-Shoulder
9	112-0443	1	Bolt-Shoulder	33	112-0554	1	Bolt-Shoulder
11	112-0669	1	Bolt-Shoulder	34	112-0646	1	Bracket-Lift, LH
12	112-0347	1	Bearing-Flange	35	112-6113	1	Bracket-Pivot, Seat
13	112-0374	1	Cable-Lift	36	112-0549	1	Clip-Ratchet, Fastener
14	112-5970	1	Handle-Lift	37	112-0540	1	Pad-Foot, RH
15	112-0502	1	Pulley-Roller	38	112-0545	1	Pad-Foot, LH
16	112-6109	1	Arm-Lift, RH	39	112-6114	1	Seat-Medium
17	112-6110	1	Arm-Lift, LH	40	112-0637	1	Plate-Boss, Insulator
18	112-0426	1	Bolt-CARR	41	112-0532	1	Switch-Spring, Inner
19	112-0524	1	Screw-HWHTF	42	112-0635	1	Plate-Insulator
20	112-6070	1	Screw-TAP	43	112-0529	1	Switch-Spring
21	112-0509	1	Screw-TAP	44	112-0626	1	Screw-HWHTF
22	112-0869	1	Cover-Lever, Lift	45	112-1260	1	Decal-Service (Toro Hotline)
23	112-6111	1	Cover-Holder (W/Cup)				
24	112-0517	1	Washer-Lock, External				
25	112-0582	1	Washer-Flat				

Transmission, Brake and Traction Pedal Assembly



Transmission, Brake and Traction Pedal Assembly

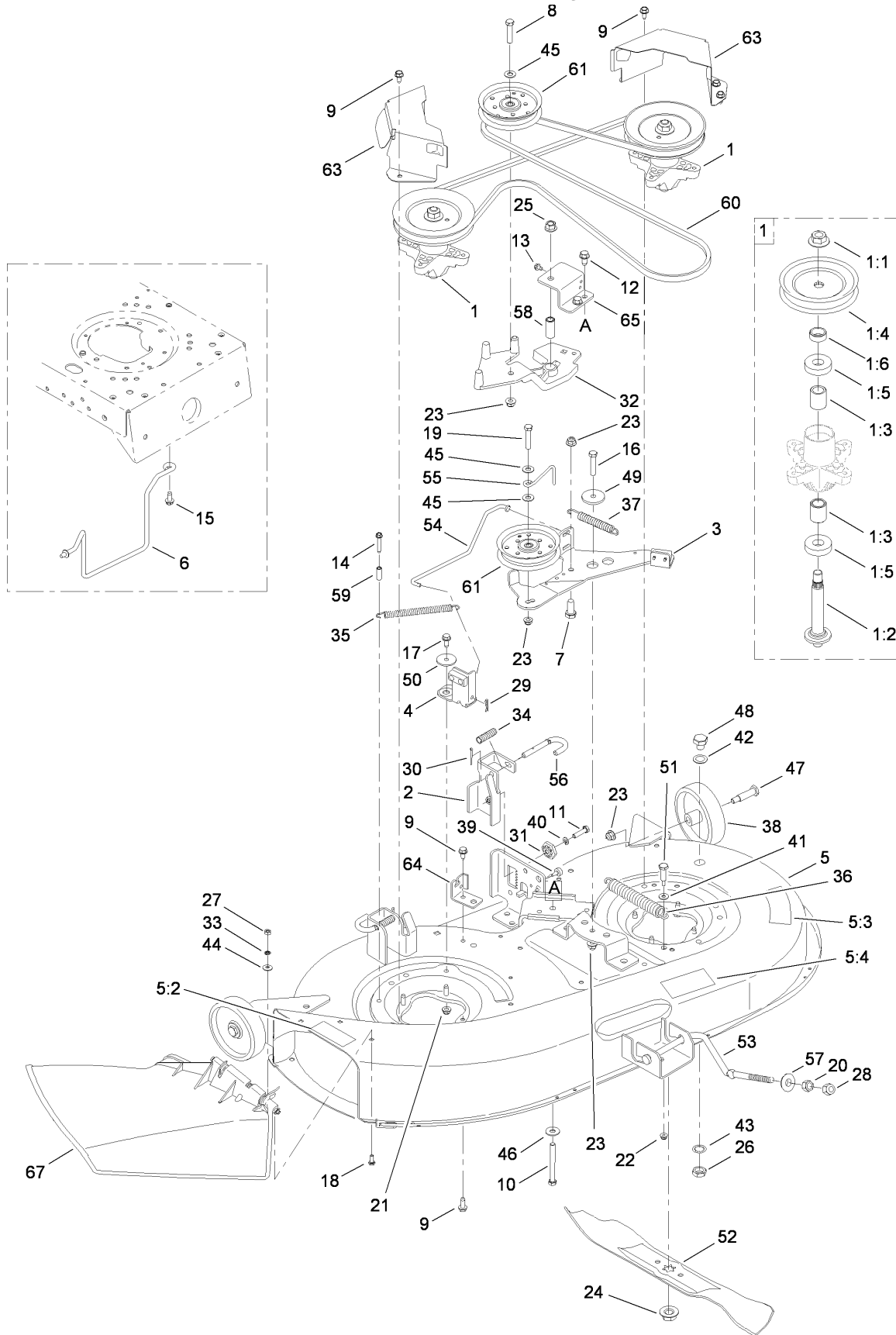
Ref	Part No.	Qty.	Description
1	112-0628	1	Bracket-Mounting, Transmission
2	112-6129	1	Pulley ASM
3	112-6083	1	Single Speed Transaxle ASM
4	112-0627	1	Shift Lever ASM
5	112-6130	1	Screw-HH
6	112-6070	1	Screw-TAP
7	112-6131	1	Screw-HH
8	112-0676	1	Screw-TAP
9	112-0603	1	Screw-HH
10	112-0469	1	Screw-TAP
11	112-0667	1	Screw-HH
12	112-0839	1	Screw-TAP
13	112-0421	1	Screw-HH
14	112-0592	1	Ferrule-Adjustable
15	112-6132	1	Nut-Jam, Lock
16	112-0343	1	Nut-Hex
17	112-0650	1	Nut-Lock, Flange
18	112-0668	1	Nut-Lock, Flange
19	112-0385	1	Nut-Lock, Flange
20	112-0451	1	Nut-Flange
21	112-0459	1	Pin-Cotter
22	112-0568	1	Pin-Cotter
23	112-0639	1	Pin-Hair
24	112-0412	1	Pin-Cotter
25	112-0450	1	Hub-Pulley
26	112-0514	1	Knob-Shift
27	112-0306	1	Ball Joint ASM
28	112-0670	1	Sleeve
29	112-0683	1	Sleeve
30	112-5991	1	Spring-Extension
31	112-0357	1	Clip-Spring, Shifter
32	112-0350	1	Spring-Extension
33	112-0348	1	Spring-Extension
34	112-5883	1	Guide-Belt, Traction
35	112-0415	1	Washer-Lock
36	112-0544	1	Washer-Flat
39	112-0345	1	Spacer-Shoulder
40	112-5992	1	Rod-Shift
41	112-0655	1	Rod-Brake
42	112-0538	1	Rod-Adjustment, Idler
43	112-0673	1	Spacer-Transaxle
44	112-5831	1	Spacer
45	112-0644	1	Spacer
46	112-0301	1	Belt-Drive, Variable Speed
47	112-0305	1	Belt-Drive, Transmission
48	112-0379	1	Pulley-V (W/Hub)
49	112-0313	1	Pulley-Idler, Flat
50	112-6133	1	Pulley-Idler, V-Type
51	112-0701	1	Bracket-Shift
52	112-0638	1	Bracket-Shift
53	112-0525	1	Bracket-Idler, Center Double
54	112-6134	1	Bracket ASM

Ref	Part No.	Qty.	Description
55	112-0626	1	Screw-HWHTF
56	112-0395	1	Screw-HWH
57	112-0557	1	Screw-HH
58	112-0602	1	Switch-Spring, Short
59	112-0625	1	Plate-Insulator
60	112-0584	1	Spacer-Shoulder
61	112-6135	1	Bracket-Idler
62	112-0539	1	Speed Control ASM
63	112-5998	1	Speed Control ASM
64	112-0680	1	Pedal ASM
65	112-0599	1	Pin
66	112-0511	1	Nut-Lock, Flange
67	112-0506	1	Spring
68	112-0510	1	Spring-Extension
69	112-0348	1	Spring-Extension
70	112-0543	1	Pad-Pedal
71	112-6001	1	Pad-Brake
72	112-0366	1	Washer-Lock
73	112-0339	1	Washer-Flat
74	112-0541	1	Washer-Flat
75	112-0542	1	Bolt-Shoulder
76	112-0442	1	Bolt-Shoulder
77	112-0347	1	Bearing-Flange
78	112-0387	1	Bearing-Flange, Hex (Split)
79	112-0675	1	Rod-Brake, Lock Control
80	112-0662	1	Rod-Control, Cruise
81	112-6005	1	Pedal-Brake
82	112-6004	1	Latch-Cruise
83	112-0681	1	Bracket-Support, Steering
84	112-0679	1	Bracket-Lockout
85	112-0435	1	Washer-Bell
86	112-0551	1	Screw-HH
87	112-0651	1	Screw-TAP
88	112-0671	1	Plate-Switch
89	112-0455	1	Switch-Interlock
90	112-0524	1	Screw-HWHTF
91	112-3737	1	Bracket-Switch, Parking Brake
92	112-0441	1	Switch-Mount, Snap
93	112-0500	1	Washer-Flat
94	112-5996	1	Cup-Bearing
95	112-0843	1	Screw-HWH
96	112-0928	1	Bearing-Ball
97	112-5995	1	Bracket-Pulley
98	112-6129	1	Pulley ASM

Single Speed Transmission Assembly No. 112-6083

Ref	Part No.	Qty.	Description				
1	112-0806	1	Shift Fork ASM				
2	112-6084	1	Drive Shaft ASM				
3	112-6085	1	Differential ASM				
4	112-6086	1	Upper Housing ASM				
5	112-0832	1	Brake ASM				
6	112-6087	1	Screw-TAP				
7	112-0698	1	Screw-HWH				
8	112-0839	1	Screw-TAP				
9	112-0741	1	Puck-Brake				
10	112-6088	1	Housing-Lower				
11	112-0801	1	Spring-Detent				
13	112-0799	1	Ball-Detent				
14	112-0817	1	Disc-Brake				
15	112-6089	1	Gear-Bevel, 42T (Spline)				
16	112-6090	1	Collar-Cluster				
17	112-6091	1	Seal				
18	112-0748	1	Washer-Flat				
19	112-0750	1	Washer-Flat				
20	112-0745	1	Washer-Flat				
21	112-0773	1	Washer-Thrust				
22	112-0755	1	Washer-Thrust				
23	112-0794	1	Bearing-Flange				
24	112-0795	1	Bearing-Flange				
25	112-0800	1	Seal				
26	112-6092	1	Bearing-Sleeve				

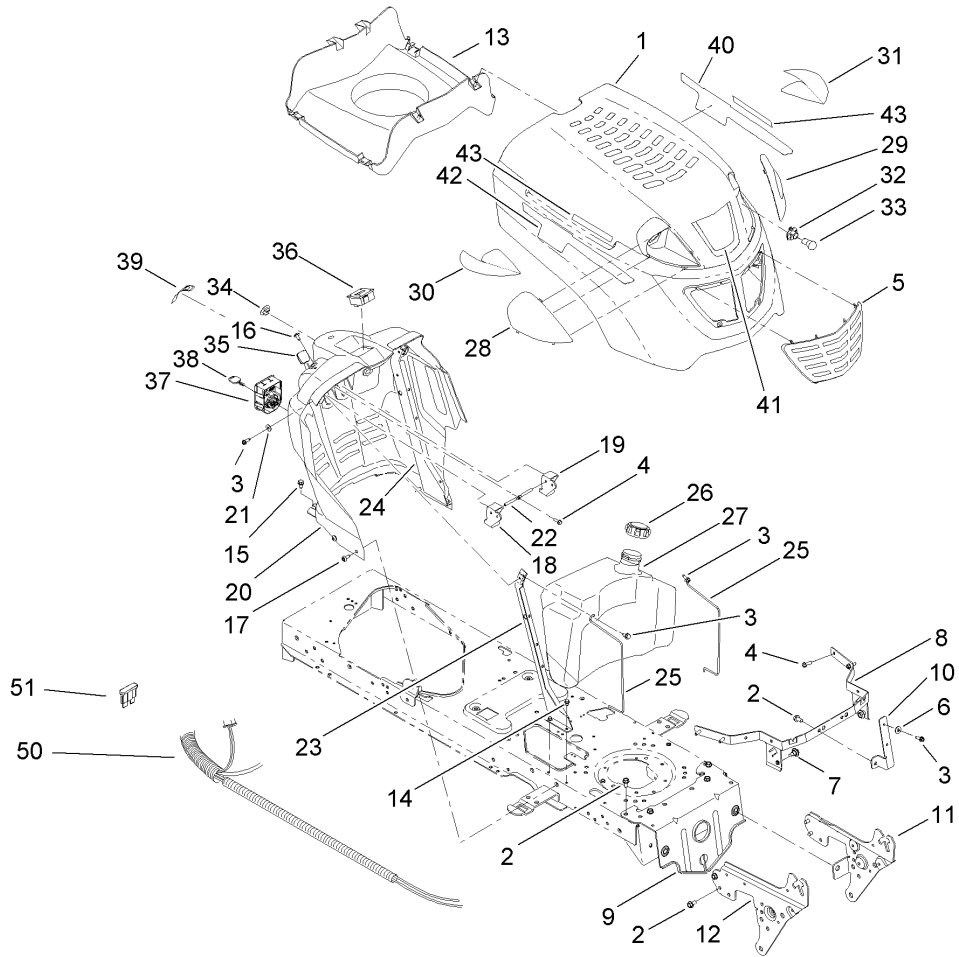
Deck Assembly



Deck Assembly

Ref	Part No.	Qty.	Description
1	112-6063	1	Spindle ASM
1:1	112-0330	1	Nut-Flange, Hex
1:2	112-6062	1	Shaft-Spindle
1:3	112-0389	1	Spacer
1:4	112-0613	1	Pulley-Deck
1:5	112-0377	1	Bearing-Ball
1:6	112-6061	1	Spacer
2	112-0413	1	LH Hanger Bracket ASM
3	112-0606	1	Deck Brake ASM
4	112-3742	1	Brake ASM
5	112-5857	1	Deck And Decal ASM
5:2	112-1267	1	Decal-Danger
5:3	112-1265	1	Decal-Danger
5:4	112-1270	1	Decal-Routing, Belt
6	112-6071	1	Rod-Keeper, Belt
7	112-0855	1	Screw-HH
8	112-0513	1	Screw-HH
9	112-6070	1	Screw-TAP
10	112-3745	1	Screw-HH
11	112-0373	1	Screw-HH
12	112-0906	1	Screw-HWHTF
13	112-6022	1	Screw-TAP
14	112-0843	1	Screw-HWH
15	112-0395	1	Screw-HWH
16	112-0557	1	Screw-HH
17	112-1090	1	Screw-HH
18	112-0499	1	Screw-HH
19	112-0421	1	Screw-HH
20	112-0458	1	Nut-Hex
21	112-0650	1	Nut-Lock, Flange
22	112-0636	1	Nut-Lock, Flange
23	112-0668	1	Nut-Lock, Flange
24	112-0330	1	Nut-Flange, Hex
25	112-0859	1	Nut-Lock, Flange
26	112-0351	1	Nut-Hex
27	112-0522	1	Nut-Hex
28	112-0476	1	Nut-Lock, Hex (Nylon)
29	112-0459	1	Pin-Cotter
30	112-0412	1	Pin-Cotter
31	112-0327	1	Gear-Adjustment, Deck
32	112-6069	1	Bracket-Idler
33	112-0623	1	Retainer-Bolt
34	112-0406	1	Spring-Compression
35	112-0528	1	Spring-Extension
36	112-6043	1	Spring-Extension
37	112-3746	1	Spring-Extension
38	112-0337	1	Wheel-Deck, Rear
39	112-1016	1	Bumper
40	112-0366	1	Washer-Lock
41	112-3695	1	Washer-Flat
42	112-0339	1	Washer-Flat
43	112-0643	1	Washer-Lock

Ref	Part No.	Qty.	Description
44	112-0485	1	Washer-Spring
45	112-0572	1	Washer-Flat
46	112-0380	1	Washer-Flat
47	112-0334	1	Bolt-Shoulder
48	112-0577	1	Plug
49	112-0584	1	Spacer-Shoulder
50	112-3747	1	Spacer-Shoulder
51	112-6068	1	Bolt-Shoulder
52	112-0315	1	Blade
53	112-0607	1	Rod-Deck, Front Adjustment
54	112-3748	1	Rod-Brake
55	112-5879	1	Rod-Keeper, Belt
56	112-0436	1	Pin-Handle, Deck Release
57	112-0641	1	Cup-Pivot, Lift
58	112-3749	1	Spacer
59	112-0644	1	Spacer
60	112-5800	1	Belt-V Type
61	112-0314	1	Pulley-Idler
63	112-6067	1	Cover-Belt
64	112-0718	1	Bracket-Cable, Deck
65	112-6066	1	Support-Bracket, Pivot
67	112-0353	1	Discharge Chute ASM



Fuel Tank, Hood and Dash Assembly

Ref	Part No.	Qty.	Description
1	112-0444	1	Hood
2	112-6070	1	Screw-TAP
3	112-0587	1	Screw-TAP
4	112-0509	1	Screw-TAP
5	112-0381	1	Grill
6	112-3695	1	Washer-Flat
7	112-6128	1	Bolt-Shoulder, TAP
8	112-5985	1	Bracket-Pivot
9	112-6127	1	Bracket-Pivot
10	112-5986	1	Bracket-Support, Hood
11	112-6126	1	Bracket-Pivot, Support (LH)
12	112-6125	1	Bracket-Pivot, Support (RH)
13	112-6124	1	Plenium-Hood
14	112-3696	1	Screw-TAP
15	112-0676	1	Screw-TAP
16	112-0550	1	Screw-TAP
17	112-0563	1	Screw-TAP
18	112-0526	1	Lever-Cruise
19	112-0580	1	Lever-Brake
20	112-6123	1	Dash-Manual, PTO
21	112-0485	1	Washer-Spring
22	112-0604	1	Rod-Lever, Bent
23	112-6122	1	Support-Dash, RH
24	112-6121	1	Support-Dash, LH

Ref	Part No.	Qty.	Description
25	112-0678	1	Rod-Support
26	112-6120	1	Cap-Fuel
27	112-6119	1	Tank-Fuel, 3 Gal
28	112-0447	1	Lens-RH
29	112-0446	1	Lens-LH
30	112-5810	1	Reflector-RH
31	112-5811	1	Reflector-LH
32	112-0408	1	Socket-Headlight
33	112-0402	1	Lamp-12V, Miniature
34	112-0535	1	Plug-Choke
35	112-6118	1	Cable-Throttle / Choke
36	112-6117	1	Meter-Hour
37	112-6116	1	Module-Switch, Ignition
38	112-6115	1	Key-Ignition
39	112-1271	1	Decal-Throttle, Dash
40	112-5952	1	Decal-Hood, Left Side
41	112-3716	1	Decal-Hood
42	112-5953	1	Decal-Hood, Right Side
43	112-6189	1	Decal
50	112-6187	1	Harness-Wire
51	112-5943	1	Fuse-20 Amp

Attachments and Accessories

For 13AL60RG044 - LX426 Lawn Tractor

Product Name	Model/Part
Washout Port Kit	112-5803
Blade Kit, Extreme (42 Inch)	112-6048
42 Inch Two-Stage Snowthrower	190-032-101
42 Inch Twin Bagger	190-180-190
46 Inch Front Blade	190-833-000
8 Inch Rear Wheel Weight Kit	59159
Mulch Kit (42 Inch Deck)	77210
10 cu. ft. Dump Cart	79901
10 cu. ft. Poly Dump Cart	79935
Folding Loading Ramp	79949
Sweeper	79985
Tire Chain Kit	82722
Blade Kit (2 Blades, 42 Inch Decks)	98022

Attachments and Accessories

For 13RL60RG044 - LX426 Lawn Tractor

Product Name	Model/Part
Washout Port Kit	112-5803
Blade Kit, Extreme (42 Inch)	112-6048
42 Inch Two-Stage Snowthrower	190-032-101
42 Inch Twin Bagger	190-180-190
46 Inch Front Blade	190-833-000
8 Inch Rear Wheel Weight Kit	59159
Mulch Kit (42 Inch Deck)	77210
10 cu. ft. Dump Cart	79901
10 cu. ft. Poly Dump Cart	79935
Folding Loading Ramp	79949
Sweeper	79985
Tire Chain Kit	82722
Blade Kit (2 Blades, 42 Inch Decks)	98022

Attachments and Accessories

For 13RL60RG244 - LX426 Lawn Tractor

Product Name	Model/Part
Washout Port Kit	112-5803
Blade Kit, Extreme (42 Inch)	112-6048
42 Inch Two-Stage Snowthrower	190-032-101
42 Inch Twin Bagger	190-180-190
46 Inch Front Blade	190-833-000
8 Inch Rear Wheel Weight Kit	59159
Mulch Kit (42 Inch Deck)	77210
10 cu. ft. Dump Cart	79901
10 cu. ft. Poly Dump Cart	79935
Folding Loading Ramp	79949
Sweeper	79985
Tire Chain Kit	82722
Blade Kit (2 Blades, 42 Inch Decks)	98022

NOTES

NOTES

NOTES

