



Foam Marker Kit

for Multi-Pro 1200, 1250, 5600 and 5700 Turf Sprayers and
Workman 200 Spray Systems

Model No. 41228—Serial No. 260000001 and Up

Installation Instructions

Note: Determine the left and right sides of the machine from the normal operating position.

Note: If you are installing this kit on a machine equipped with an enclosed boom system, use these instructions along with the enclosed boom system instructions.

Note: If you are installing this kit on a machine equipped with a cab, a bracket from Custom Products (part number 2-15904) needs to be installed as well to eliminate the interference with the cab.

Note: RTV silicone sealant is used in the installation of this kit.

Safety

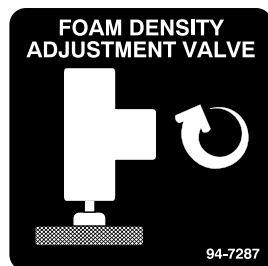
Safety and Instructional Decals



Safety decals and instructions are easily visible to the operator and are located near any area of potential danger. Replace any decal that is damaged or lost.



94-7275



94-7287

Installation

Loose Parts

Use the chart below to verify that all parts have been shipped.

Procedure	Description	Qty.	Use
1	Tank/compressor assembly	1	Install the tank, compressor and mixer.
	Supply hose, 108 inches	2	
	Multi-Pro 1200 series adapter bracket	1	
	Workman adapter bracket	1	
	Mud flap	1	
	Mud flap bracket	1	
	Bolt (3/8 x 1 inch)	4	
	Flange locknut, serrated (3/8 inch)	2	
	Locknut (3/8 inch)	1	
	Carriage bolt, (3/8 x 1-1/4 inches)	4	
	Flange locknut, non-serrated (3/8 inch)	4	
	Flange bolt (5/16 x 3/4 inch)	3	
	Lock nut (5/16 inch)	3	
	Flat washer (3/8 inch)	4	
Hose clamp, small	2		
2	Bolt (3/8 x 1 inch)	1	Install the mixer tee.
	Locknut (3/8 inch)	1	
	Mixer assembly	1	
	Flat washer (3/8 inch)	2	
3	Wiring harness	1	Wire the kit.
	Hose clamp, small	6	
	Plastic ties	12	
4	Rocker switch	2	Install the switches and fuse.
	Fuse, 15-amp	1	
5	Boom hose	2	Complete the installation
	Grommet	2	
	Punched-hole boom cap	2	
	Extension hose	2	
	Hose clamp, large	2	
	Parts catalog	1	

Separate instructions for the installation of the Foam Marker kit are denoted in each step of the Setup where specific procedures deviate from one machine to another. Please look for the heading describing instructions specific to the machine you are working with before proceeding with each step of the Setup.

1

Installing the Tank, Compressor, and Mixer

Parts needed for this procedure:

1	Tank/compressor assembly
2	Supply hose, 108 inches
1	Multi-Pro 1200 series adapter bracket
1	Workman adapter bracket
1	Mud flap
1	Mud flap bracket
4	Bolt (3/8 x 1 inch)
2	Flange locknut, serrated (3/8 inch)
1	Locknut (3/8 inch)
4	Carriage bolt, (3/8 x 1-1/4 inches)
4	Flange locknut, non-serrated (3/8 inch)
3	Flange bolt (5/16 x 3/4 inch)
3	Lock nut (5/16 inch)
4	Flat washer (3/8 inch)
2	Hose clamp, small

Procedure

Multi Pro 1200 or 1250 Turf Sprayer

1. Mount the Multi-Pro 1200 series adapter bracket to the right side of the vehicle above the battery (Figure 1) using 4 carriage bolts (3/8 x 1-1/4 inches) and 4 flange locknuts (3/8 inch).

Note: It is easiest if you remove the battery before performing this step. Refer to your vehicle *Operator's Manual* for instructions.

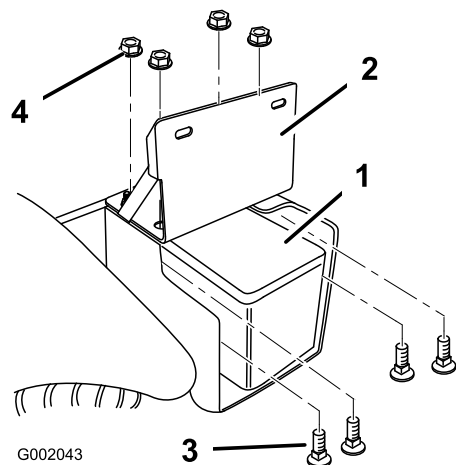


Figure 1

1. Battery
 2. Multi-Pro 1200 series adapter bracket
 3. Carriage bolt (3/8 x 1-1/4 inches)
 4. Flange locknut, non-serrated (3/8 inch)
-
2. Remove the 4 bolts (1/4 x 1 inch) and flat washers that hold the cover to the tank/compressor assembly and remove the cover (Figure 2).

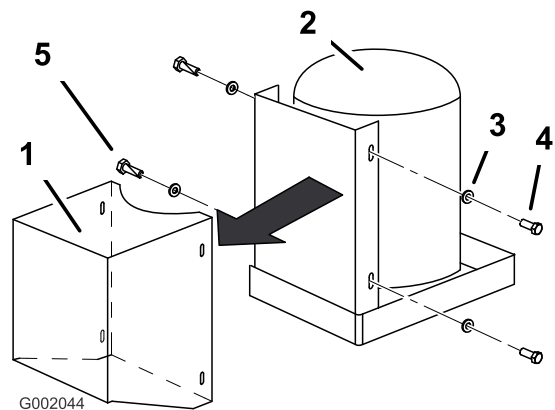


Figure 2

1. Cover
 2. Tank/compressor assembly
 3. Flat washer
 4. Bolt (1/4 x 1 inch)
 5. Bottom right bolt
-
3. Set the cover and fasteners aside.
 4. Mark a 108 inch supply hose with a black marker at each end (Figure 3).

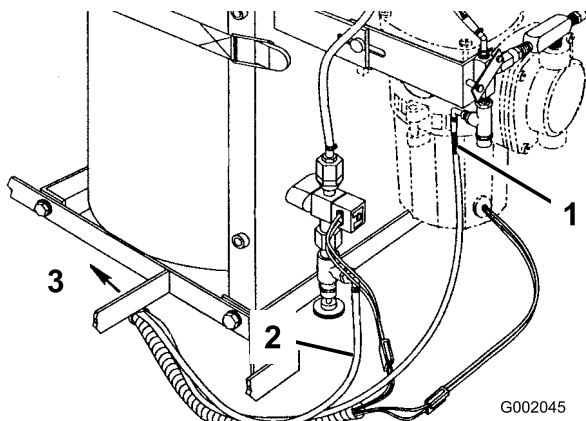


Figure 3

- 1. Compressor hose
- 2. Needle valve hose
- 3. To the mixer tee

Multi Pro 5600/5700 Turf Sprayer

1. Remove 4 bolts (1/4 x 1 inch) and flat washers that hold the cover to the tank/compressor assembly (Figure 5).

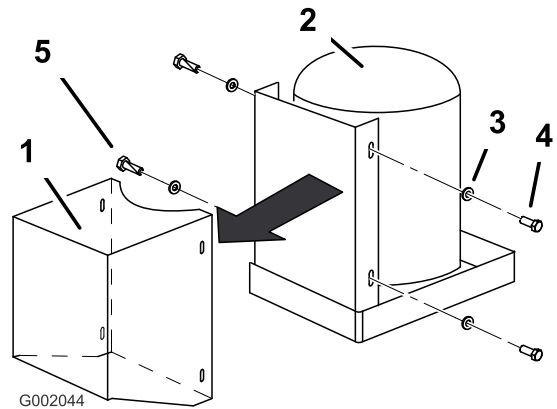


Figure 5

- 1. Cover
- 2. Tank/compressor assembly
- 3. Flat washer
- 4. Bolt (1/4 x 1 inch)
- 5. Bottom right bolt

5. Connect the marked supply hose to the hose barb at the compressor and the other supply hose to the hose barb on the needle valve (Figure 3).
6. Secure the hose ends with small hose clamps.
7. Route both of the supply hoses rearward along the right side of the sprayer to the rear of the machine following the sprayer wiring harness.
8. Attach the cover to the tank/compressor assembly using 4 hex-head bolts (1/4 x 1 inch) and 4 flat washers that you removed previously.
9. Install the tank/compressor assembly to the Multi-Pro 1200 series adapter bracket using 2 bolts (3/8 x 1 inch), 2 flat washers (3/8 inch) as shown Figure 4.

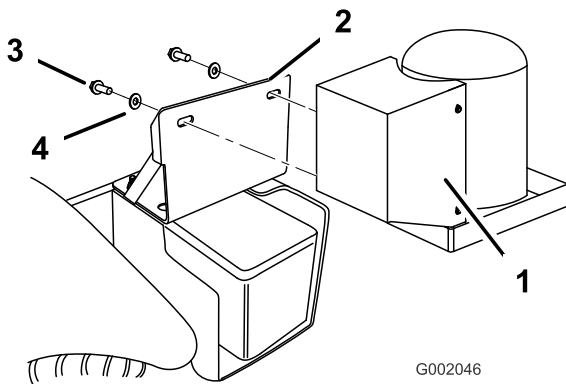


Figure 4

- 1. Tank/compressor assembly
- 2. Multi-Pro 1200 series adapter bracket
- 3. Bolt (3/8 x 1 inch)
- 4. Flat washer (3/8 inch)

2. Remove the cover.
3. Set the cover and fasteners aside.
4. Mark a 108 inch supply hose with a black marker at each end (Figure 6).

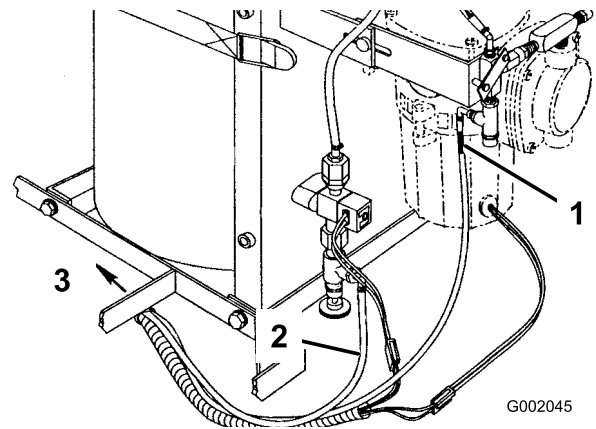


Figure 6

- 1. Compressor hose
- 2. Needle valve hose
- 3. To the mixer tee

5. Connect the marked supply hose to the hose barb at the compressor and the other supply hose to the hose barb on the needle valve (Figure 9).
6. Secure the hose ends with small hose clamps.
7. Route both of the supply hoses rearward along the left side of the sprayer to the rear of the machine following the sprayer wiring harness.

- Mount the tank/compressor assembly to the right step frame using 2 bolts (3/8 x 1 inch) and 2 flat washers (Figure 7).

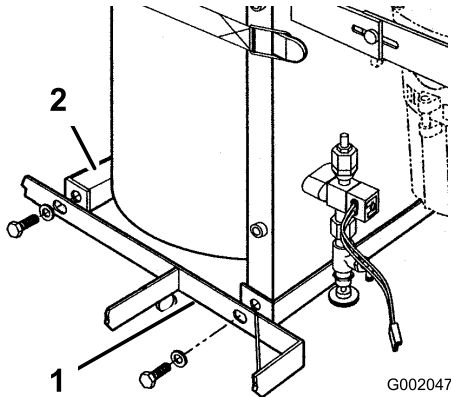


Figure 7

- Right step frame
- Tank assembly frame

Note: You must install the fasteners from the backside of the step frame.

- Attach the cover to the tank/compressor assembly using 4 hex-head bolts (1/4 x 1 inch) and 4 flat washers that you removed previously.

Workman 200 Spray System

- Remove the 4 bolts (1/4 x 1 inch) and 4 flat washers that hold the cover to the tank/compressor assembly and remove the cover (Figure 8).

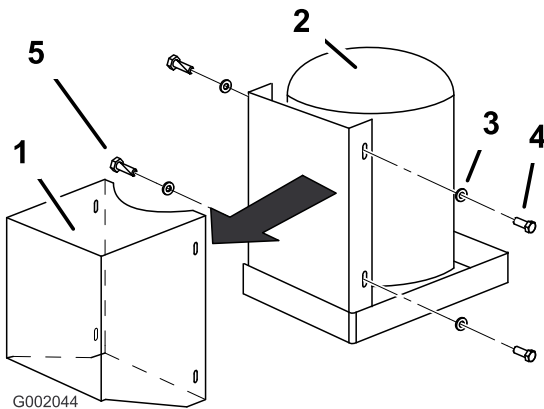


Figure 8

- Cover
- Tank/compressor assembly
- Flat washer
- Bolt (1/4 x 1 inch)
- Bottom right bolt

- Set the cover and fasteners aside.
- Mark a 108 inch supply hose with a black marker at each end (Figure 9).

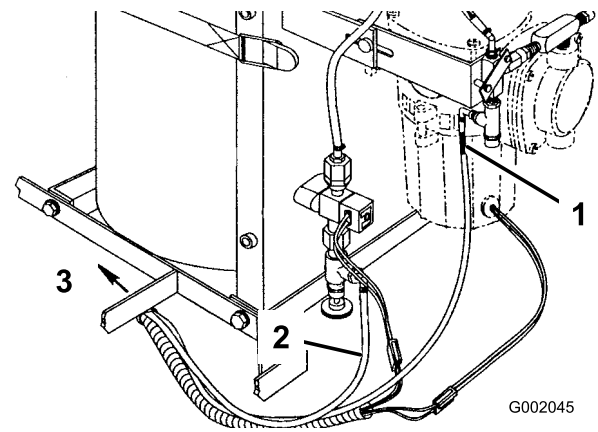


Figure 9

- Compressor hose
- Needle valve hose
- To the mixer tee

- Connect the marked supply hose to the hose barb at the compressor and the other supply hose to the hose barb on the needle valve (Figure 9).
- Secure the hose ends with small hose clamps.
- Route both of the supply hoses rearward along the left side of the sprayer to the rear of the machine following the sprayer wiring harness.
- Remove the rubber striping on the back side of the tank cover (Figure 10).

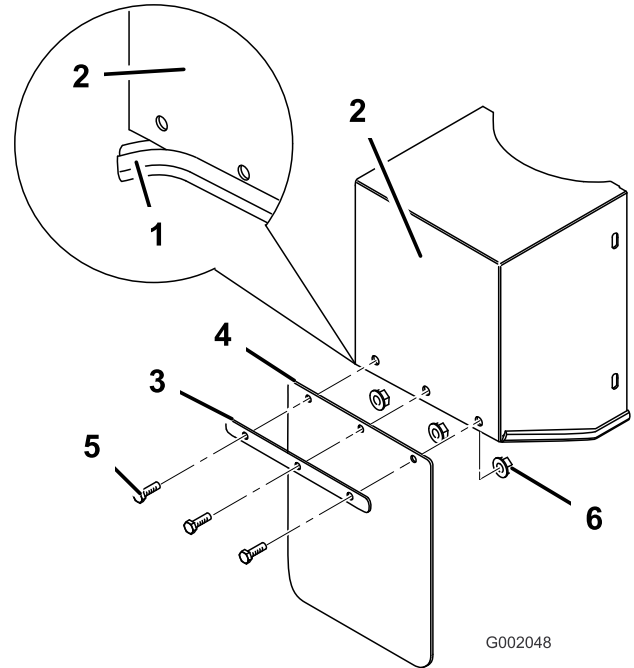


Figure 10

- Rubber strip
- Tank cover
- Mud flap bracket
- Mud flap
- Bolt (5/16 x 3/4 inch)
- Locknut (5/16 inch)

- Locate the mud flap and mud flap bracket in loose parts. Install the mud flap to the tank cover. Secure the flap using the bracket, three bolts (5/16 x 3/4

inch) and three locknuts (5/16 inch) as shown in Figure 10.

9. Attach the cover to the tank/compressor assembly using 3 of the 4 hex-head bolts (1/4 x 1 inch) and flat washers that you removed previously. Leave the bottom right bolt out until later in the installation (Figure 8).
10. Mount the Workman adapter bracket supplied in the kit to the tank/compressor assembly using 2 bolts (3/8 x 1 inch), 2 flat washers (3/8 inch) as shown Figure 11.

Note: If necessary, cut back the rubber trim on the cover so that it does not interfere when mounting the bracket to the tank/compressor assembly.

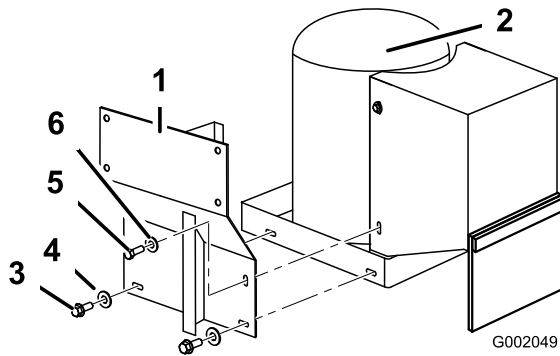


Figure 11

- | | |
|-----------------------------|---------------------------|
| 1. Workman adapter bracket | 4. Flat washer |
| 2. Tank/compressor assembly | 5. Bolt (1/4 x 1 inch) |
| 3. Bolt (3/8 x 1 inch) | 6. Flat washer (1/4 inch) |

11. Install the remaining bolt (1/4 x 1 inch) and flat washer (1/4 inch) through the Workman adapter bracket and cover into the tank/compressor assembly (Figure 11).
12. Remove the left handle and fasteners from the left side of the tank skid. Save fasteners for later use.
13. Mount the foam marker assembly to the frame using two bolts (3/8 x 1 inch), two washers (3/8 inch), two flange nuts (3/8 inch) included in loose parts; and the left handle and fasteners removed previously (Figure 12).

Note: Rotate the tank so that the handle is closest to the frame.

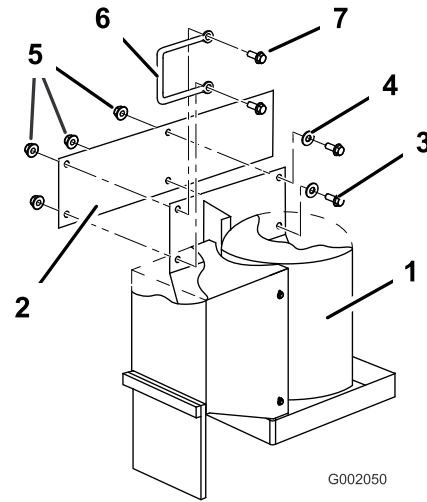


Figure 12

- | | |
|-------------------------|------------------------------------|
| 1. Foam marker assembly | 5. Flange nut, serrated (3/8 inch) |
| 2. Frame | 6. Left sprayer handle |
| 3. Bolt (3/8 x 1 inch) | 7. Fasteners |
| 4. Washer (3/8 inch) | |

2

Installing the Mixer Tee

Parts needed for this procedure:

1	Bolt (3/8 x 1 inch)
1	Locknut (3/8 inch)
1	Mixer assembly
2	Flat washer (3/8 inch)

Procedure

For all sprayers, serial number 25999999 and lower

1. At the rear of the machine, mount the mixer assembly facing rearward to the bracket on the center boom assembly with a bolt (3/8 x 1 inch), flat washer, and locknut (Figure 13).

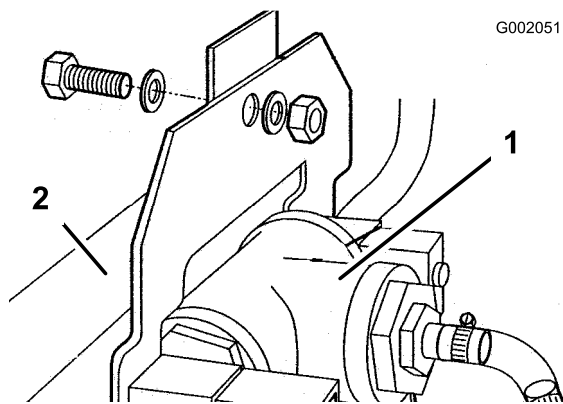


Figure 13

1. Mixer tee assembly 2. Center boom

Note: If necessary on Workman 200 Spray Systems, rotate the mixer assembly down so that it does not interfere with the pump.

2. Locate the supply hoses routed to the rear of the machine previously.
3. Slide the marked supply hose onto the barb on the check valve located at the tee assembly (Figure 14).

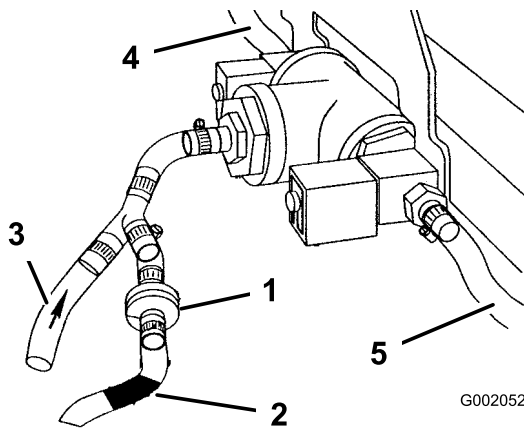


Figure 14

1. Check valve 4. Right boom hose
 2. Hose from the compressor 5. Left boom hose
 3. Hose from the needle valve

4. Connect the other supply hose to the barbed “Y” at the tee assembly (Figure 14).
5. Secure the hoses with small hose clamps.
6. Connect the right boom hose to the right side solenoid valve assembly and the left supply hose to the left side solenoid assembly.
7. Secure both hoses with small hose clamps (Figure 14).

For all sprayers, serial number 260000001 and higher

1. At the rear of the machine, mount the mixer assembly on the forward facing side of the center

boom assembly with a bolt (3/8 x 1 inch), flat washer, and locknut (3/8 inch) as shown in Figure 15.

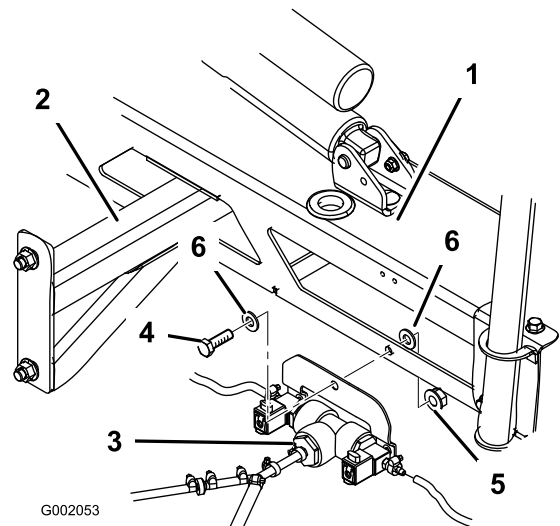


Figure 15

1. Center boom 4. Bolt
 2. Right boom mount bracket 5. Locknut
 3. Mixer tee assembly 6. Flat washer

2. Locate the supply hoses routed to the rear of the machine previously.
3. Slide the marked supply hose onto the barb on the check valve located at the tee assembly (Figure 16).

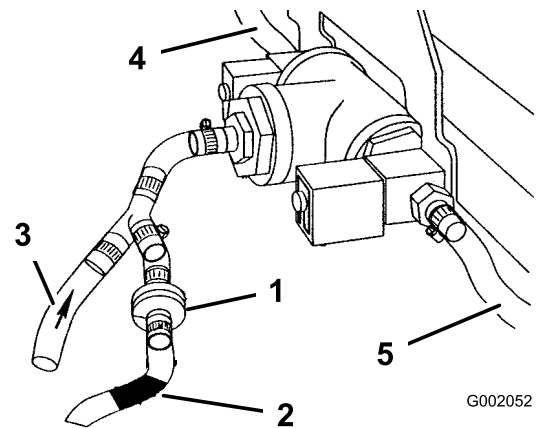


Figure 16

1. Check valve 4. Right boom hose
 2. Hose from the compressor 5. Left boom hose
 3. Hose from the needle valve

4. Connect the other supply hose to the barbed “Y” at the tee assembly (Figure 16).
5. Secure the hoses with small hose clamps.

- Connect the right boom hose to the right side solenoid valve assembly and the left supply hose to the left side solenoid assembly.
- Secure both hoses with small hose clamps (Figure 16).

3

Wiring the Kit

Parts needed for this procedure:

1	Wiring harness
6	Hose clamp, small
12	Plastic ties

Procedure

Multi Pro 1200 or 1250 Turf Sprayer

- Locate the labeled connectors wiring harness for the foam marker solenoid and compressor and make the connections to the compressor and the solenoid located at the foam tank/compressor assembly (Figure 17).

Note: Both of the plug connections are identical (Figure 17).

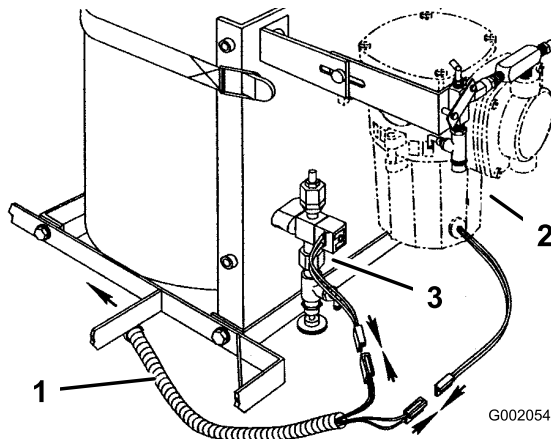


Figure 17

- Wiring harness
- Compressor
- Solenoid

- At the rear of the machine, plug the harness connectors into the boom solenoid assemblies. Plug the connector with the blue wire to the right solenoid; plug the connector with the orange wire to the left solenoid (Figure 18).

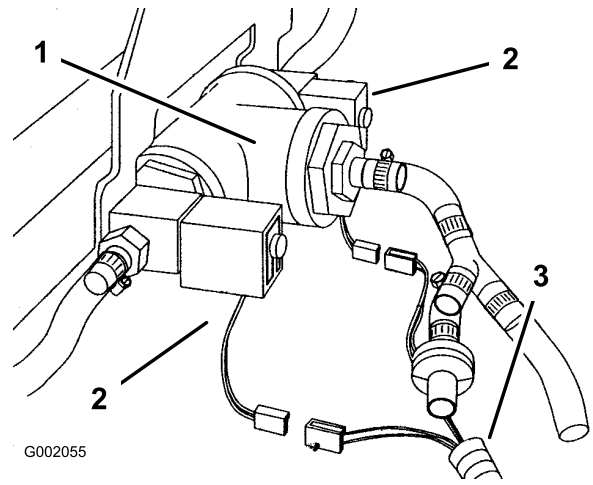


Figure 18

- Mixer tee assembly
- Boom solenoids
- Wiring harness

Multi Pro 5600/5700 Turf Sprayer

- Locate the wiring harness connectors furnished with the vehicle for the foam marker and make the connections to the compressor and the solenoid located at the foam tank/compressor assembly (Figure 19).

Note: The connectors are located along the right side frame rail strapped to the vehicle harness, where the tank/compressor is installed. Both of the plug connections are identical (Figure 19).

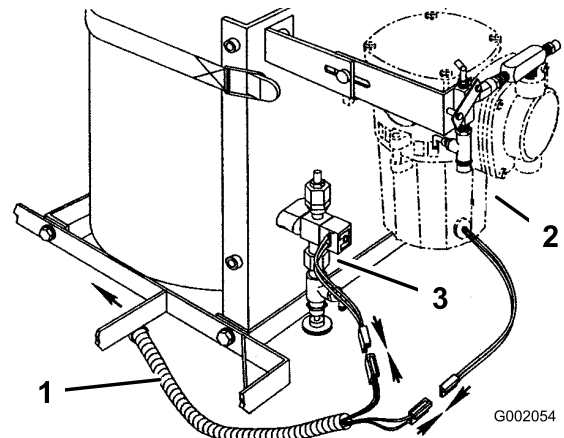


Figure 19

- Wiring harness
- Compressor
- Solenoid

- Locate the wiring harness connector furnished with the vehicle for the foam marker boom solenoid at the center section of the boom (Figure 20).

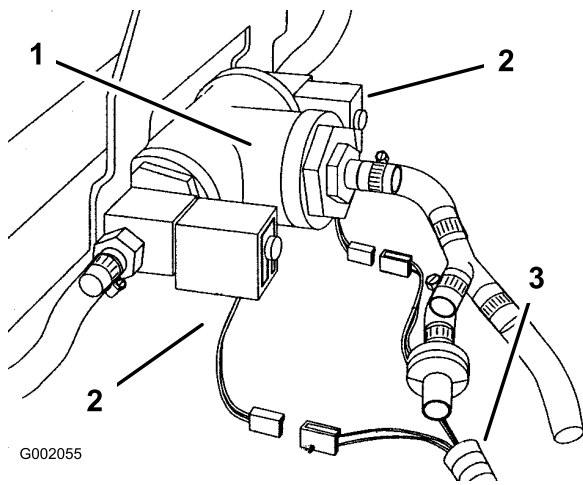


Figure 20

- 1. Mixer tee assembly
- 2. Boom solenoids
- 3. Wiring harness

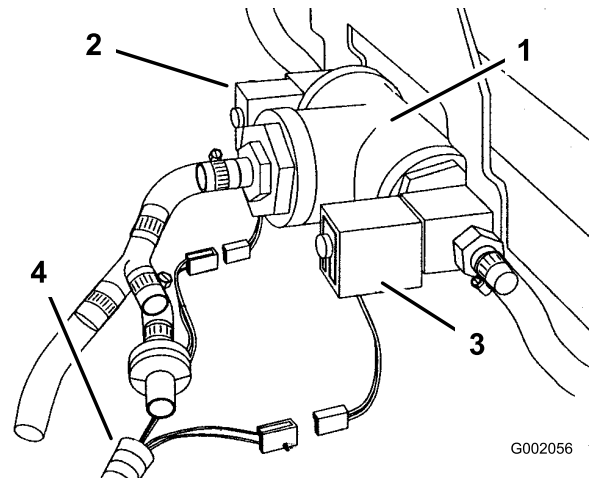


Figure 22

- 1. Mixer tee assembly
- 2. Boom solenoid, right
- 3. Boom solenoid, left
- 4. Wiring harness

3. Plug the harness connectors into the boom solenoids at the mixer tee assembly. Plug the connector with the blue wire to the right solenoid and plug the connector with the orange wire to the left solenoid (Figure 20).

Workman 200 Spray System

1. Locate the wiring harness and make the connections to the compressor and the solenoid located at the foam tank/compressor assembly (Figure 21).

Note: Both of the plug connections are identical (Figure 21).

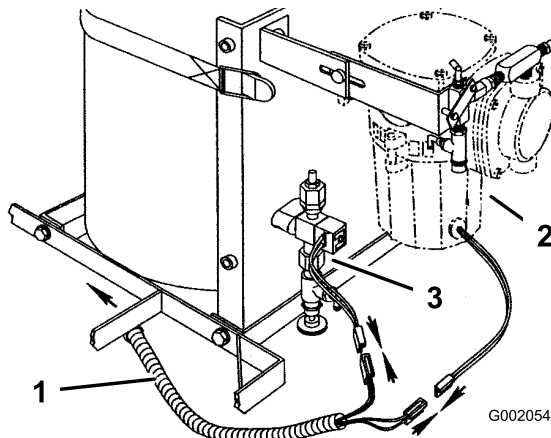


Figure 21

- 1. Wiring harness
- 2. Compressor
- 3. Solenoid

2. Locate the connectors in the rear wiring harness of the sprayer (Figure 22).
 - A. Plug the connector with the yellow/blue wire into the left boom solenoid.
 - B. Plug the connector with the blue/green wire into the right boom solenoid.

3. Route the hoses along the wiring harness to the rear of the sprayer and to the mixer tee using the cable ties. Secure the hose end with a small hose clamp.

4

Installing the Switches and Fuse

Parts needed for this procedure:

2	Rocker switch
1	Fuse, 15-amp

Procedure

Multi Pro 1200 or 1250 Turf Sprayer

1. Remove the spray control panel to expose the bottom side.
2. Lift and remove the 2 plugs from the spray control panel on the vehicle and install the 2 rocker switches provided in their place (Figure 23 for the 1250 and Figure 24 for the 1200).

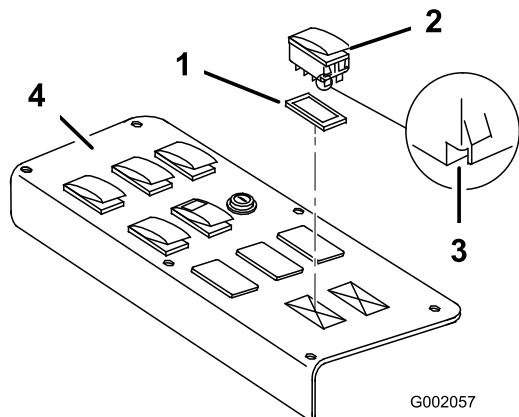


Figure 23
1250

- 1. Plug
- 2. Switch
- 3. Notch (at back)
- 4. Spray control panel

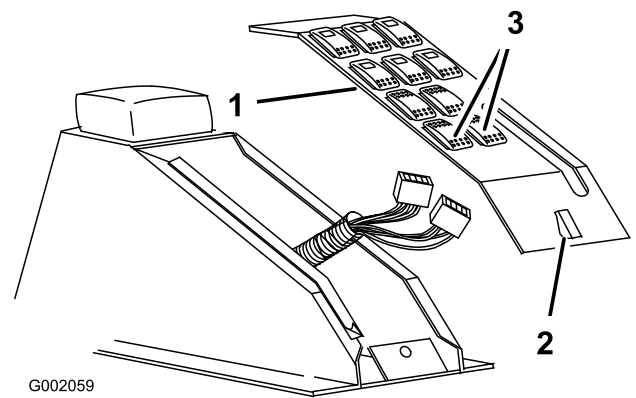


Figure 25

- 1. Control panel
- 2. Latch
- 3. Foam marker switches

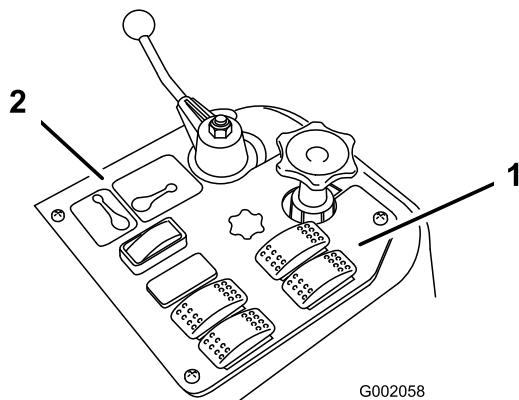


Figure 24
1200

- 1. Foam marker switches
- 2. Spray control panel

3. Remove the foam marker switch hole plugs.
4. Install the 2 rocker switches into the switch panel.

Note: Ensure that the notch/hole on the bottom of each switch is oriented toward the rear of the vehicle.

5. Plug the harness connectors found in the center console into the foam marker switches.

Note: The plugs in the harness are marked: Boom foam RS/LS switch. The left connector has an orange wire with a blue stripe and the right connector has a blue wire with a gray stripe.

6. Install the switch panel and secure the latch.
7. Screw the throttle knob onto the throttle rod until it is hand tight.
8. Insert the 15-amp fuse in the corresponding slot in the fuse block (at the front of the vehicle).

Workman 200 Spray System

1. Loosen the 4 screws securing the front panel to the control box (Figure 26).
2. Remove the front panel expose the inside of the control box (Figure 26).

3. Plug the connector with the orange wire for the right foam solenoid to the right switch and the connector with the blue wire for the left foam solenoid to the left switch.

Note: Ensure that the orientation of the switches matches what is shown in Figure 23, with the notch pointing toward the rear of the vehicle.

4. Insert the 15-amp fuse in the corresponding slot in the fuse block (at the front of the vehicle).

Multi Pro 5600/5700 Turf Sprayer

1. Remove the throttle knob by unscrewing it from the throttle rod at the center console.
2. Release the latch and remove the switch panel assembly from the center console assembly (Figure 25).

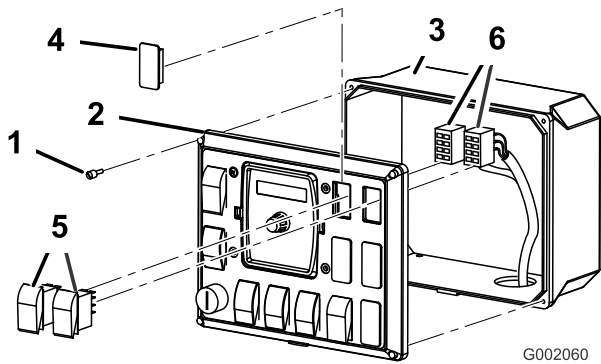


Figure 26

G002060

- | | |
|----------------|------------------|
| 1. Screw | 4. Plug |
| 2. Front panel | 5. Rocker Switch |
| 3. Control box | 6. Connectors |

5

Completing the Installation

Parts needed for this procedure:

2	Boom hose
2	Grommet
2	Punched-hole boom cap
2	Extension hose
2	Hose clamp, large
1	Parts catalog

Procedure

For all sprayers, serial number 259999999 and lower

Note: If you are installing this kit on a previously setup sprayer, you may need to disassemble the boom assembly for steps 1 through 10 below.

1. Locate, mark, and drill (through the top surface only) a hole (5/8 inch dia) 1-1/2 inch from the plugged end of the right boom pipe (Figure 28).

Note: On some booms, this hole exists. If drilling a hole is not necessary skip ahead to 5.

3. Lift and remove the 2 plugs from the spray control panel on the vehicle and install the 2 rocker switches provided in their place (Figure 26).
 4. Plug the connector with the yellow/blue wire to the left switch and the connector with the blue/green wire to the right switch.
- Note:** Ensure that the orientation of the switches mates with the orientation of the connector.
5. Install the front control panel to the control box and secure it with the 4 screws loosened previously.
 6. Insert the 15-amp fuse in the top slot in the fuse block. Make sure the corresponding wire in the fuse block is connected to the red/black wire in the harness (Figure 27).

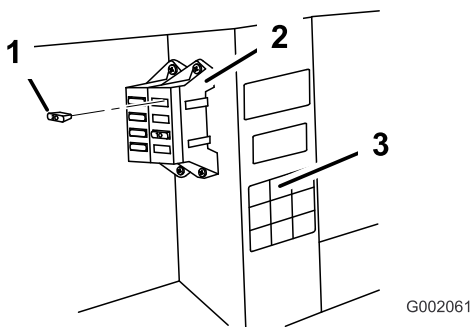


Figure 27

G002061

- | | |
|---------------|-------------------|
| 1. 15-amp | 3. Fuse box decal |
| 2. Fuse block | |

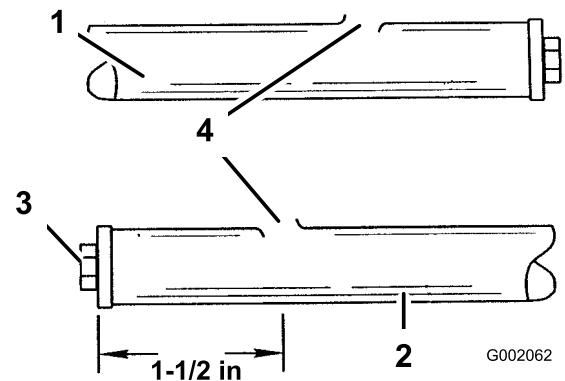


Figure 28

G002062

- | | |
|--------------------|---|
| 1. Left boom pipe | 3. Boom plug |
| 2. Right boom pipe | 4. Hole, 5/8 inch, drilled, de-burred and distorted |

2. Repeat for the left boom pipe.
3. Use a round file or deburring tool to deburr the holes you drilled in the boom pipes (Figure 28).
4. Insert a drift punch into the 5/8 inch holes in the boom pipes and distort the openings as shown in Figure 28.

Note: This allows you to install the boom hoses more easily.

5. Remove the existing boom cap from the end of the boom pipe.
6. Insert the boom hose into the hole drilled in the right boom pipe and push it into the boom pipe until the hose appears at the end of the boom pipe. Pull the tubing through and cut away the excess so that **2 to 3 inches** of boom hose **extends beyond** the end of the boom pipe (Figure 29).

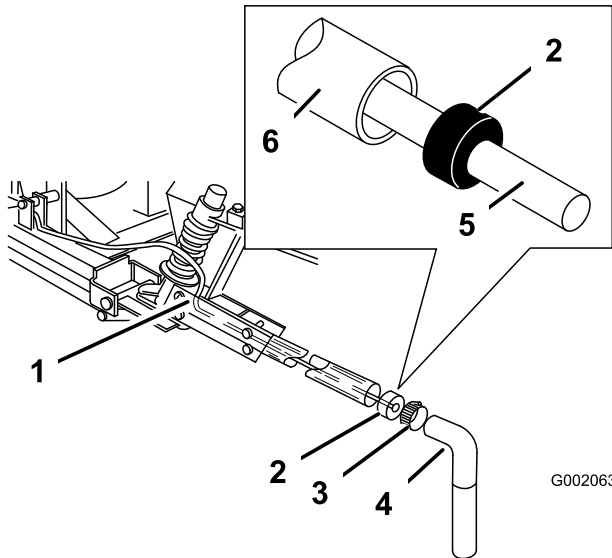


Figure 29

- | | |
|--------------------------|---|
| 1. Boom hose | 4. Extension hose |
| 2. Punched hole boom cap | 5. 2 to 3 inches of boom hose past the boom cap |
| 3. Hose clamp | 6. End of the boom pipe |

7. Push the boom hose through the punched hole boom cap until it **extends 2 to 3 inches past the cap** (Figure 29).
8. Install the boom cap into the end of the boom pipe (Figure 29).
9. Lubricate the inside of the extension hose and slide it over the cap and boom hose and onto the boom pipe (Figure 29).
10. Secure the extension hose onto the boom pipe with a large hose clamp (Figure 29).
11. Repeat 5 through 10 for the left boom pipe.
12. Seal the 5/8 inch drilled holes on each boom pipe with RTV silicone after you completely assemble the hoses and boom pipes.
13. Ensure that the marked supply hose is connected at the compressor and the check valve. If not, correct it before using.

14. Secure all loose wires and hoses to the vehicle frame using plastic ties.

15. Close the foam density adjustment valve completely (Figure 33).

For all sprayers, serial number 260000001 and higher

1. Install a grommet over the boom hose coming from the left side of the mixer tee.
2. Route the hose from mixing tee through the cut-out on the underside of the top bar in the boom frame (Figure 30). Feed the hose until it extends **2-3 inches beyond** the end of the frame tube.

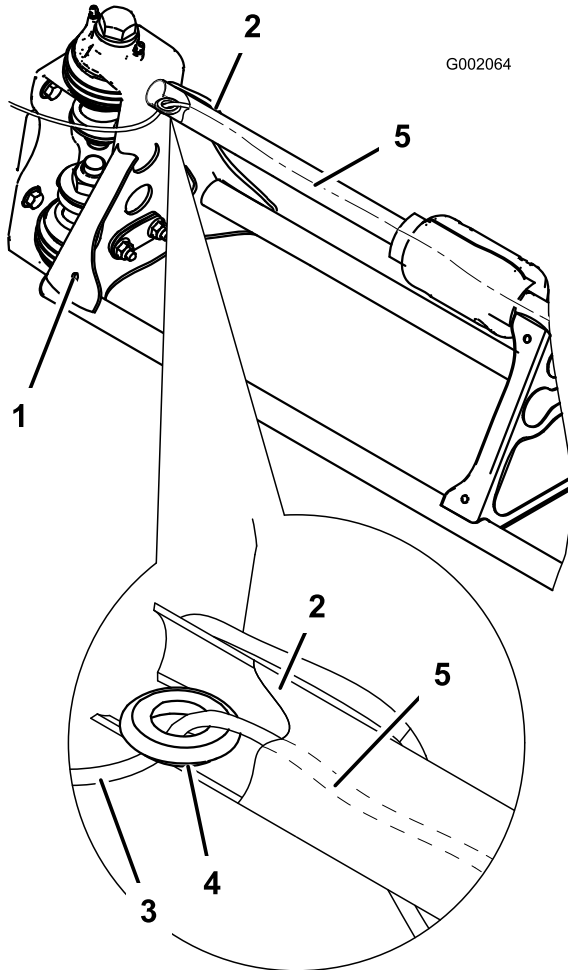


Figure 30
Left boom

- | | |
|------------------|---|
| 1. Left boom | 4. Grommet |
| 2. Top frame bar | 5. Boom hose, feed through top frame bar. |
| 3. Boom hose | |

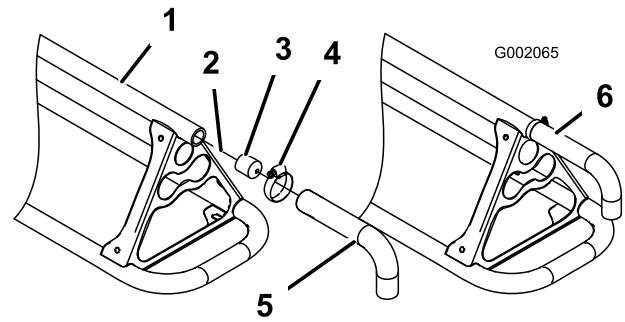


Figure 31

- | | |
|------------------------|-------------------|
| 1. Top bar, boom frame | 4. Hose clamp |
| 2. Boom hose | 5. Extension hose |
| 3. Cap | 6. Assembled |

5. Install the boom cap onto the end of the top bar of the boom frame (Figure 31).
6. Lubricate the inside of the extension hose and slide it over the cap and boom hose and onto the boom pipe (Figure 31).
7. Secure the extension hose onto the boom pipe with a large hose clamp (Figure 31).
8. Repeat 1 through 7 for the left boom pipe.
9. Ensure that the marked supply hose is connected at the compressor and the check valve. If not, correct it before using.
10. Secure all loose wires and hoses to the vehicle frame using plastic ties.
11. Close the foam density adjustment valve completely (Figure 33).

3. Secure the boom hose in the frame tube by installing the grommet into the cut-out (Figure 30).
4. Pull the boom hose through the punched hole boom cap until it **extends 2 to 3 inches past the cap** (Figure 31).

Operation

Using the Controls

Right boom switch—activates the compressor, generating a flow of foam to the right boom section.

Left boom switch—activates the compressor, generating a flow of foam to the left boom section.

Note: You can drop the foam simultaneously from both boom sections.

Sight gauge—indicates the solution level in the tank. It is located on the side of the tank.

Foam density adjustment valve—controls the consistency of the foam solution. Setting the valve to Decreasing lowers the water content, allowing the markers to hold its shape. Setting the valve to Increasing creates a more watery marker.

Note: On a windy day, a watery marker consistency may be helpful.

Pressure relief valve—when it is in the upright position, it relieves the pressure in the foam solution tank.

Filling the Tank and Adjusting the Foam Density

1. Ensure that both the left and right boom switches located on the console are in the Off position.



The contents of the foam marker tank are under pressure. Loosening the fittings on the tank could result in personal injury.

Flip the pressure relief valve into the Up position.

2. Flip the pressure relief valve to the upright position (Figure 32). Wait until all air has escaped.

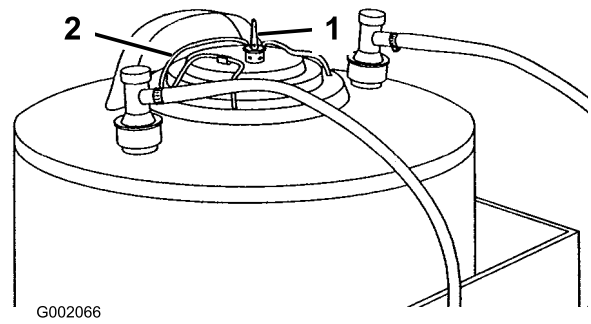


Figure 32

1. Pressure relief valve
2. Lid clamp

3. Pull up on the lid clamp, turn the lid 90 degrees, and remove it from the tank.
 4. Pour the proper amount water and foam concentrate through the opening in the top of the tank according to the manufacturer's instructions.
- Important: Extreme pH levels (hardness/softness) of the water will affect the amount of foam concentrate needed.**
5. Install the lid on the solution tank.
 6. Ensure that the lid is positioned properly for a tight seal and push down on the clamp lid.
 7. Close the pressure relief valve.
 8. For the initial operation, open the foam density adjustment valve 1/8 to 1/4 turn (Figure 33).

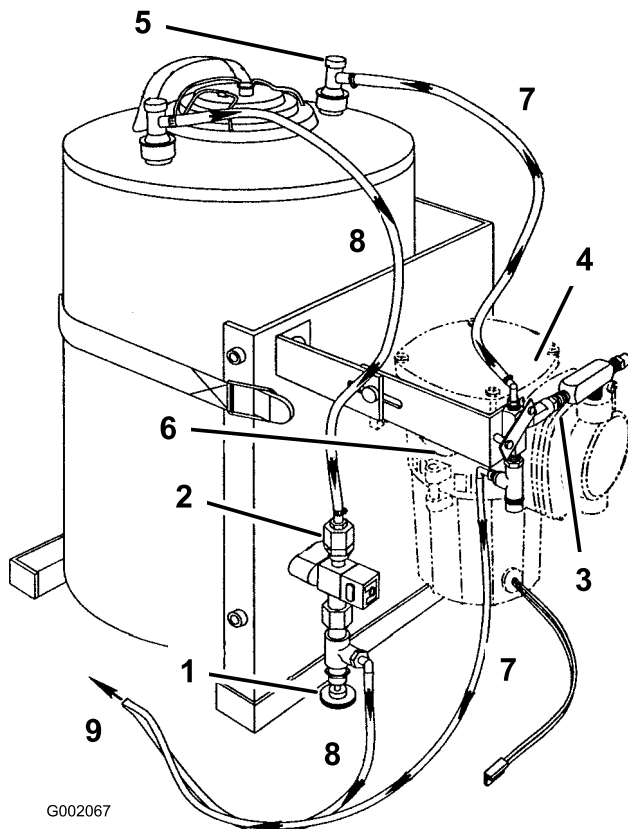


Figure 33

- | | |
|----------------------------------|-----------------|
| 1. Foam density adjustment valve | 6. Air filter |
| 2. Strainer | 7. Air only |
| 3. Check valve | 8. Liquid |
| 4. Compressor | 9. To mixer tee |
| 5. Couplers | |

9. Start operating the marking system and make a test pattern on the ground. When you first start the marking system, allow 1 to 2 minutes for the foam to flow through the line.
10. Adjust the foam density adjustment valve to obtain the desired consistency and spray as normal.

Note: If you leave the foam in the line for more than 2 hours, it may become watery. Before operating after a break of 2 or more hours, run the machine for 1 to 2 minutes to remove the excess water.

Note: The mixer tee can flood if the solution-to-air mixture is too rich, producing watery foam. If the foam is too dry, the flow will be unsteady with high-pressure surges.

If the foam in the machine is very watery, do the following:

- A. Close the foam density adjustment valve completely.
- B. Operate for 2 minutes.
- C. Wait 1 minute and then check the consistency of the foam.
- D. Adjust the foam to achieve the desired consistency.

Maintenance

Recommended Maintenance Schedule(s)

Maintenance Service Interval	Maintenance Procedure
Every 100 hours	<ul style="list-style-type: none"> • Inspect the hose between the foam tank and the compressor for accumulated water. • Inspect and clean the check valve in the tee on top of the compressor. Replace the valve if necessary. • Remove and clean the strainer at the top of the solenoid valve, next to the compressor. • Ensure that the bottom of the compressor is free from debris.
Every 250 hours	<ul style="list-style-type: none"> • Replace the compressor air filter. • Check for and rinse out debris from the inside of the tank.
Every 500 hours	<ul style="list-style-type: none"> • Replace the plastic check valve at the "Y" near the mixer tee assembly, located at the rear of the machine, on the center boom.

Cleaning the Strainer

Important: Dried foam agent and debris can clog the strainer (Figure 34), causing slow or no

foam production. This can be mistaken for a bad foam pump or incorrect foam mix. If experiencing

slow or no foam production, remove and clean the strainer.

1. Position the vehicle on a level surface, set the parking brake, stop the pump, stop the engine, and remove the ignition key.⁶
2. Relieve pressure within tank by flipping the pressure release valve into the upright position (Figure 32).
3. Clamp liquid hose and remove from hose barb.
4. Unscrew nozzle body and hose barb from nozzle adapter and solenoid assembly. Remove strainer (Figure 34).

Important: Use a back up wrench on the nozzle adapter while unscrewing the nozzle body to avoid unnecessary torque on the solenoid assembly.

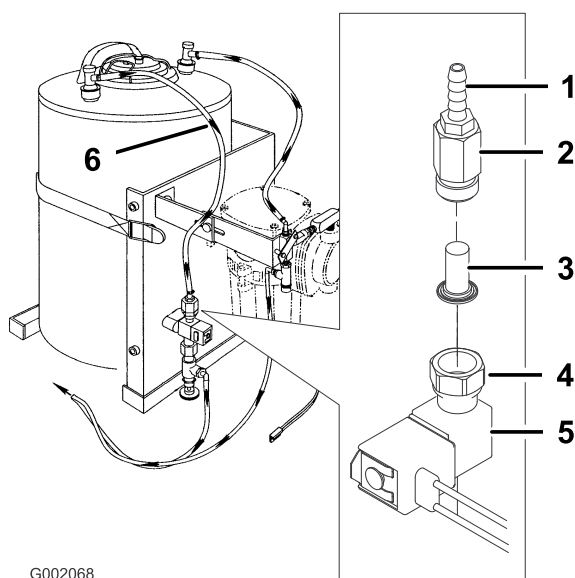


Figure 34

- | | |
|----------------|----------------------|
| 1. Hose barb | 4. Nozzle adapter |
| 2. Nozzle body | 5. Solenoid assembly |
| 3. Strainer | 6. Liquid hose |

5. Inspect and clean strainer. Replace if necessary.
6. Assemble strainer and nozzle body/hose barb as shown in Figure 34 and install into nozzle adapter/solenoid assembly.
7. Attach liquid hose to hose barb and un-clamp.
8. Flip pressure release valve to the down position.

If the problem persists, please contact your local Authorized Toro Distributor.

Storage

1. Remove the couplers on top of the tank.
2. Loosen and unhook the foam marker tank strap.
3. Remove the tank from the bracket, remove the tank lid, and empty the contents of the tank.
4. Rinse and flush the inside of the tank.
5. Install the lid on the tank.
6. Attach the couplers.
7. Strap the tank into place.