



Soil Cultivator Compact Utility Loader

Model No. 23102 - 280000001 and up.

Parts Catalog

Ordering Replacement Parts

To order replacement parts, please supply the part number, the quantity, and the description of each part desired.

Understanding Reference Numbers

Each identified part in an illustration has a reference number. The reference number for a part also appears in the parts list, along with other information about the part.

This catalog uses two special reference number formats, one to indicate parts in a service assembly and another to indicate the quantity of a given part in an illustration.

Service Assembly Reference Numbers

Parts in service assemblies have reference numbers in the form a:b. The a represents the reference number of the entire service assembly and the b represents a sequential number unique to each part within the service assembly.

For example, a wheel assembly might be identified by reference number 6, the tire by 6:1, the valve by 6:2, and the wheel by 6:3. When you order the assembly identified by reference number 6, you receive all parts identified by reference numbers 6:1, 6:2, and 6:3. However, you may also order any part individually. Reference numbers of this type appear in illustrations and in part lists.

Reference Numbers Indicating Quantity

In an illustration, if a reference number indicates more than one part, the reference number has the form nX y. The n represents the quantity of the part, the X is the multiplication symbol, and the y represents the reference number.

For example, in an illustration, the reference number 2X 37 means that two of the parts identified by reference number 37 are indicated.

Contents

Description	Page	Description	Page
Frame Assembly 3	Roller Frame and Grader Assembly 5
Rotor Blade Drive Assembly 4	Hydraulic Hose and Motor Assembly 6
		Hydraulic Motor Assembly No. 105-4573 7

Part Description Abbreviations

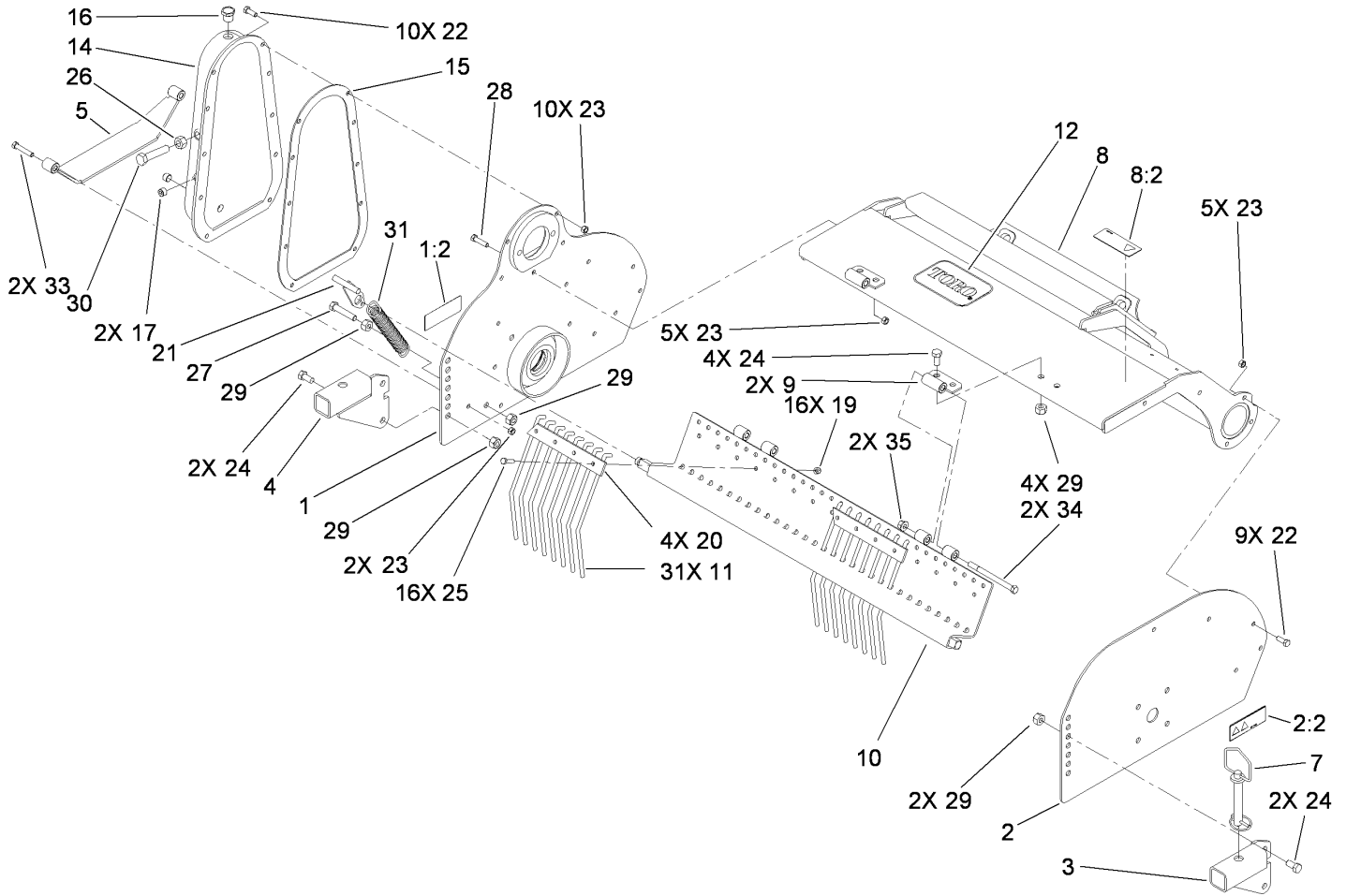
Part descriptions in this catalog may include the following abbreviations.

AR. as required	HYD. hydraulic
ASM. assembly	LH. left hand
BBC. blade brake clutch	NI. nylon insert
CARR. carriage	NPTF. national pipe thread fine
DEG. degrees	PFH. phillips flat head
EXT. external	PPH. phillips pan head
FH. flat head	PPHTF. phillips pan head thread forming
GA. gauge	PRH. phillips round head
HD. heavy-duty	PTH. phillips truss head
HF. hex flange	PTO. power-take-off
HH. hex head	RH. right hand
HHF. hex head flange	ROPS. roll-over protection system
HHFTF. hex head flange thread forming	SFH. slotted fillister head
HJ. hex jam	SHH. slotted hex head
HLH. hex lag head	SHWH. slotted hex washer head
HOC. height-of-cut	SPH. slotted pan head
HSBH. hex socket button head	SQH. square head
HSFH. hex socket flat head	SRH. slotted round head
HSH. hex socket head	STD. standard
HWH. hex washer head	TAP. self tapping
HWHTF. hex washer head thread forming	TTH. torx truss head

Footnotes

❶ Not illustrated

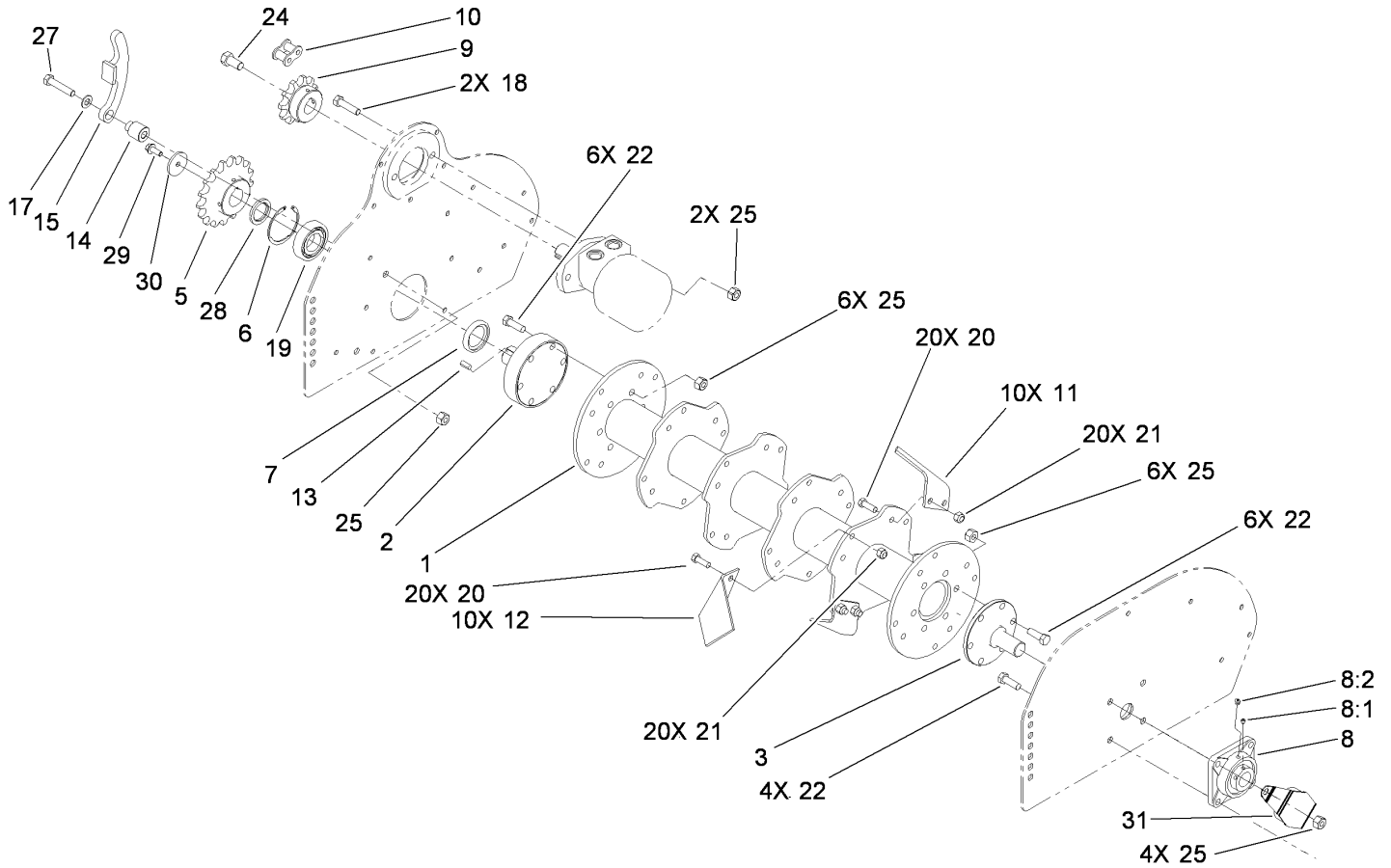
❷ Not serviced separately



Frame Assembly

Ref	Part No.	Qty.	Description
1	114-7879	1	Left Side ASM
1:2	93-7321	1	Decal-Danger
2	114-7877	1	Right Side ASM
2:2	93-7321	1	Decal-Danger
3	114-1414	1	Plate-Fitting, Right
4	114-1418	1	Plate-Fitting, Left
5	114-1419	1	Plate-Protector
7	114-7854	2	Pin-Drift
8	114-7878	1	Frame Chasis ASM
8:2	100-4708	1	Decal-Warning
9	114-1430	2	Hinge
10	114-1433	1	Plate-Rod, Screening
11	114-1439	31	Rod-Screening
12	62-7400	1	Decal
14	114-7846	1	Case-Chain
15	114-7848	1	Gasket-Cork
16	114-7847	1	Plug
17	114-7853	2	Plug
19	3296-29	16	Nut-Lock, NI
20	114-7843	4	Plate-Retaining, Tine
21	114-7831	1	Handle-Spring
22	323-6	19	Screw-HH
23	32153-2	22	Nut-Lock, Side
24	325-4	8	Screw-HH

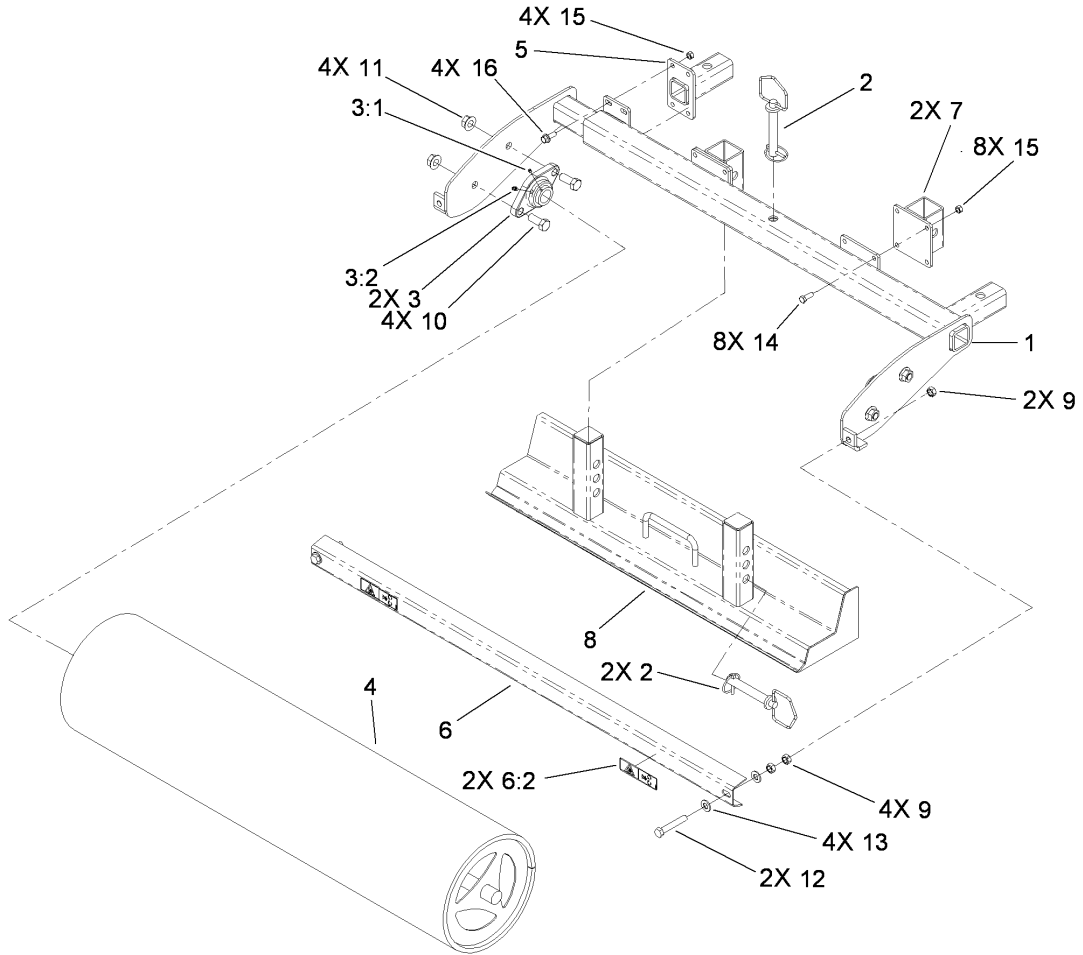
Ref	Part No.	Qty.	Description
25	322-6	16	Screw-HH
26	3217-11	1	Nut-Hex
27	325-10	1	Screw-HH
28	323-8	1	Screw-HH
29	3296-25	10	Nut-Lock, NI
30	115-4841	1	Screw-HH
31	114-7888	1	Spring-Extension
33	323-10	2	Screw-HH
34	3212-26	2	Screw-HH
35	32128-48	2	Nut-Lock, HHF



Rotor Blade Drive Assembly

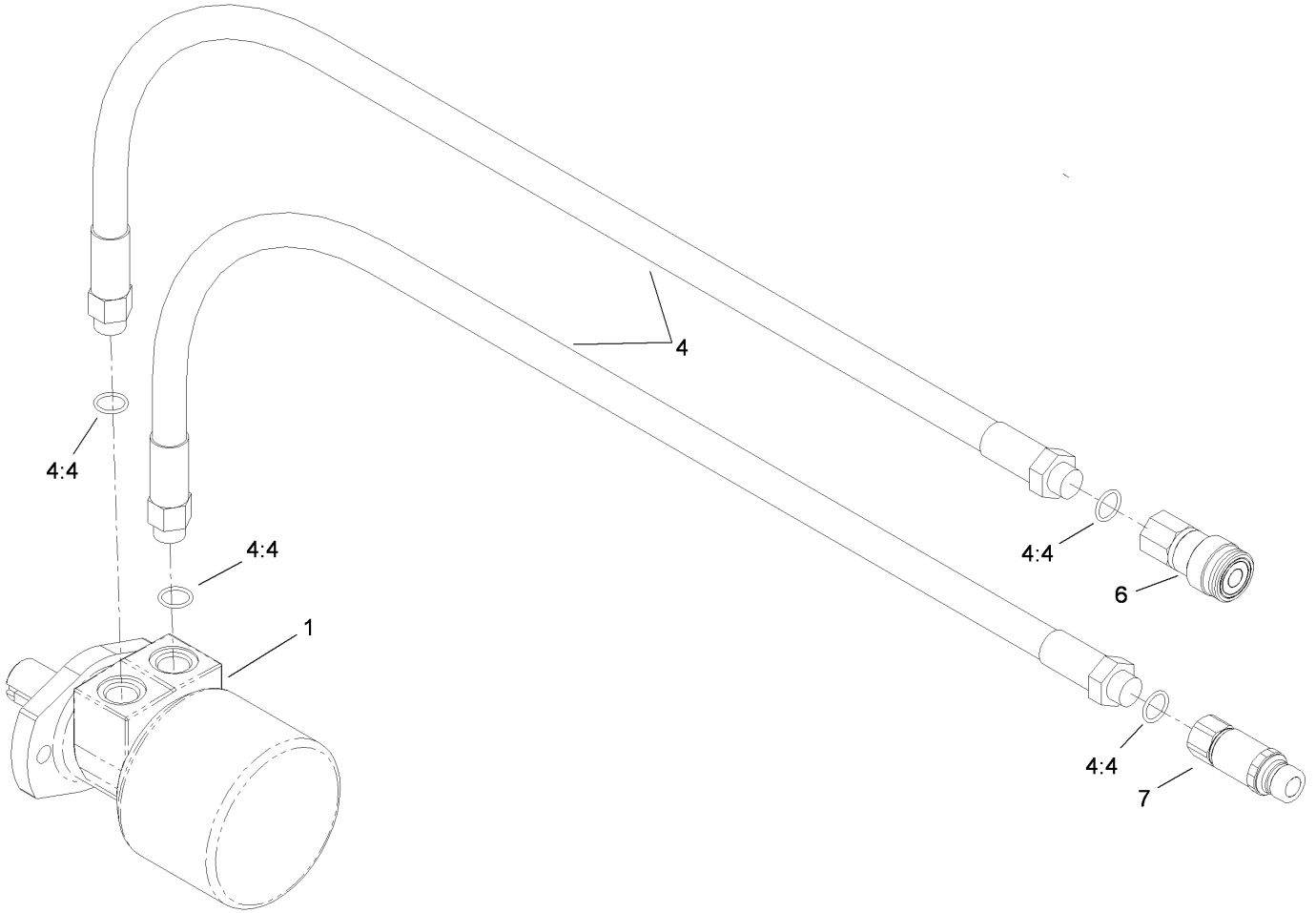
Ref	Part No.	Qty.	Description
1	114-1440	1	Rotor
2	114-1444	1	Shaft-Drive
3	114-1449	1	Plate-Disc
5	114-7856	1	Gear-17 Tooth
6	114-7857	1	Ring-Retaining
7	114-7858	1	Seal-Shaft
8	114-7860	1	Bearing ASM
8:1	106-9662	1	Screw-Set, HSH
8:2	114-7896	1	Fitting -Grease
9	115-4578	1	Sprocket ASM-Welded
10	114-7849	1	Chain-Roller
11	114-7800	10	Blade-Left
12	114-7801	10	Blade-Right
13	98-9935	1	Key-Square
14	114-7804	1	Bracing-Tubular
15	114-7805	1	Tightener-Chain
17	3256-26	1	Washer-Flat
18	325-8	2	Screw-HH
19	251-344	1	Bearing-Ball
20	324-29	40	Bolt-HH
21	32146-7	40	Nut-Lock, Insert
22	325-6	16	Screw-HH
24	3214-2	1	Screw-HH
25	3296-25	19	Nut-Lock, NI

Ref	Part No.	Qty.	Description
27	325-10	1	Screw-HH
28	115-4574	1	Spacer-Bearing
29	3234-42	1	Screw-HHF
30	115-4576	1	Plate-Cover, Sprocket
31	115-4065	1	Cover-Bearing



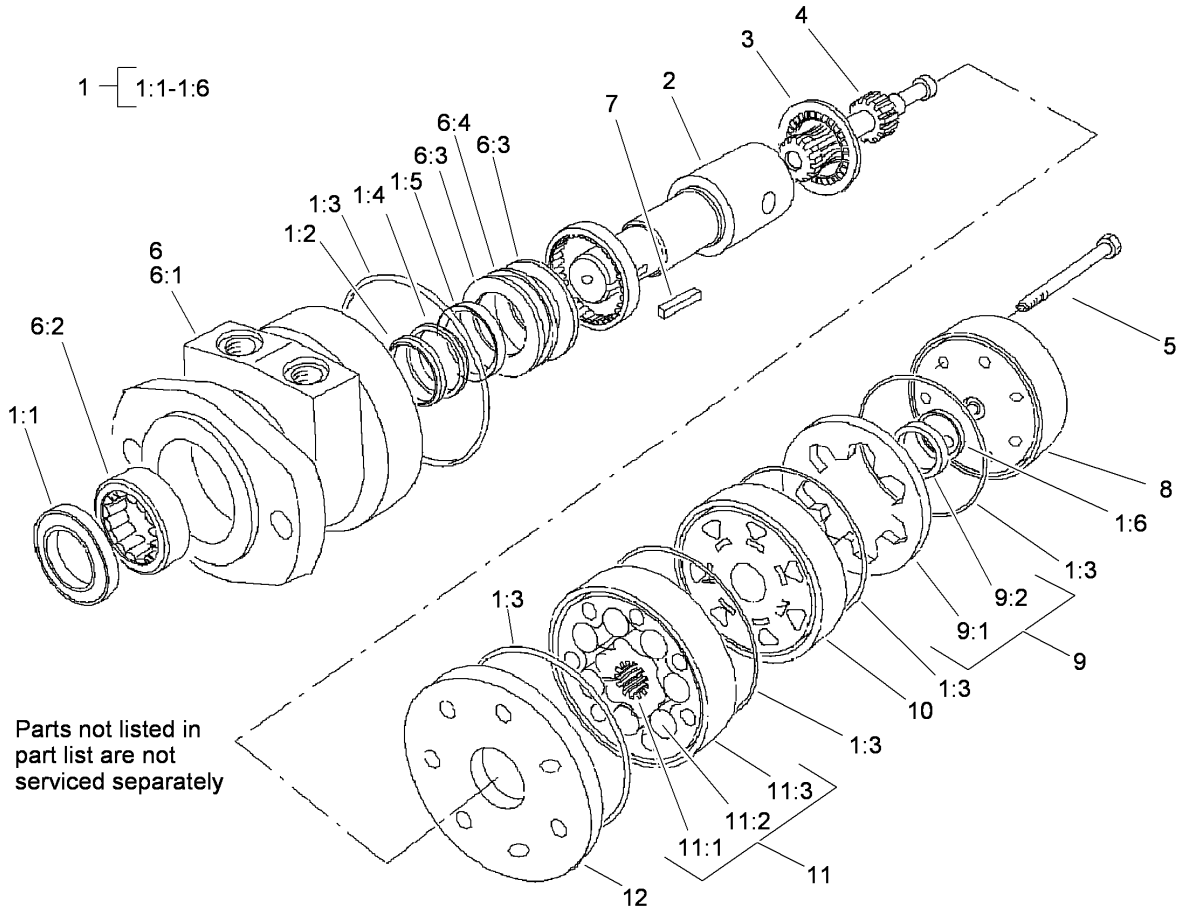
Roller Frame and Grader Assembly

Ref	Part No.	Qty.	Description
1	114-7808	1	Roller Frame ASM
2	114-7854	3	Pin-Drift
3	114-7867	2	Bearing ASM
3:1	3245-35	1	Screw-Set
3:2	302-5	1	Fitting-Grease
4	114-7835	1	Roller-Mesh
5	115-4590	1	Arm-Male
6	114-7845	1	Scraper Plate ASM
6:2	108-1287	2	Decal-Warning
7	114-7899	2	Scraper Guide ASM
8	114-7827	1	Blade-Grader
9	32153-5	6	Nut-Lock, Side
10	327-4	4	Screw-HH
11	32128-50	4	Nut-Flange
12	325-12	2	Screw-HH
13	3256-26	4	Washer-Flat
14	323-6	8	Screw-HH
15	32153-2	12	Nut-Lock, Side
16	3234-42	4	Screw-HHF



Hydraulic Hose and Motor Assembly

Ref	Part No.	Qty.	Description
1	105-4573	1	Motor-HYD
4	114-7885	2	Hose ASM
4:4	237-80	2	O-Ring
6	104-6134	1	Coupler-Face, Flush
7	100-4701	1	Nipple-Connect, Pressure
●7:1	100-6120	1	Seal Kit



Hydraulic Motor Assembly No. 105-4573

Ref	Part No.	Qty.	Description
1	94-8178	1	Seal Kit
② 1:1		1	Seal-Dirt And Water
② 1:2		1	Backup-Ring
② 1:3		1	Seal-Shaft
② 1:4		1	Washer-Backup
② 1:5		5	Seal-Square, Ring (Inner)
② 1:6		1	Seal-Commutator
2	95-6137	1	Coupling Shaft
3	76-0850	1	Bearing-Thrust
4	76-0930	1	Link-Drive
5	76-1030	7	Screw-HH
6	95-6136	1	Housing ASM
② 6:1		1	Housing
② 6:2		1	Bearing
② 6:3		2	Washer-Thrust
② 6:4		1	Bearing-Thrust
7	11-5790	1	Key-Square
8	76-0940	1	End Cover ASM
9	95-6138	1	Commutator ASM
② 9:1		1	Ring-Commutator
② 9:2		1	Commutator
10	92-9755	1	Manifold
11	76-0950	1	Rotor Set
② 11:1		1	Rotor

Ref	Part No.	Qty.	Description
② 11:2		7	Vane
② 11:3		1	Stator
12	106-1978	1	Plate-Wear

