



## Polar Trac Kit Groundsmaster® 7200 Series Mower

Model No. 30370 - 280000001 and up.

### Parts Catalog

---

#### Ordering Replacement Parts

To order replacement parts, please supply the part number, the quantity, and the description of each part desired.

#### Understanding Reference Numbers

Each identified part in an illustration has a reference number. The reference number for a part also appears in the parts list, along with other information about the part.

This catalog uses two special reference number formats, one to indicate parts in a service assembly and another to indicate the quantity of a given part in an illustration.

#### Service Assembly Reference Numbers

Parts in service assemblies have reference numbers in the form a:b. The a represents the reference number of the entire service assembly and the b represents a sequential number unique to each part within the service assembly.

For example, a wheel assembly might be identified by reference number 6, the tire by 6:1, the valve by 6:2, and the wheel by 6:3. When you order the assembly identified by reference number 6, you receive all parts identified by reference numbers 6:1, 6:2, and 6:3. However, you may also order any part individually. Reference numbers of this type appear in illustrations and in part lists.

#### Reference Numbers Indicating Quantity

In an illustration, if a reference number indicates more than one part, the reference number has the form nX y. The n represents the quantity of the part, the X is the multiplication symbol, and the y represents the reference number.

For example, in an illustration, the reference number 2X 37 means that two of the parts identified by reference number 37 are indicated.

## Contents

Description	Page	Description	Page
Track and Frame Assembly	..... 3	Hydraulic Cylinder Assembly No. 112-9549	..... 9
Drive Track Assembly No. 108-5164	..... 4	2-Spool Hydraulic Valve Assembly No. 110-3588	..... 10
Bogie Assembly No. 112-1693	..... 5	Skid Plate Assembly	..... 11
Foot Control Assembly	..... 6	Change Over Assembly	..... 12
Hydraulic Assembly	..... 7		

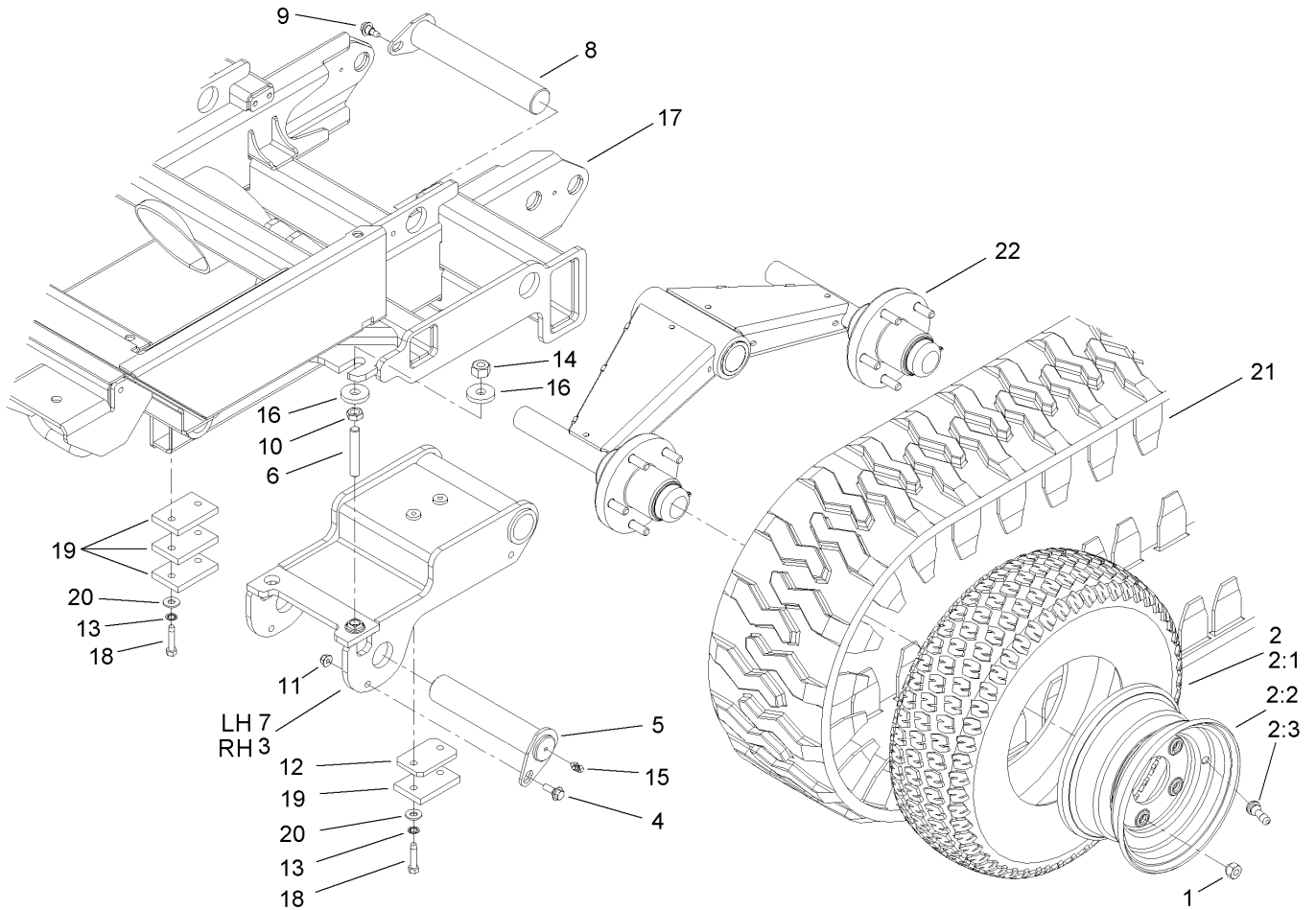
## Part Description Abbreviations

Part descriptions in this catalog may include the following abbreviations.

AR. .... as required	HYD. .... hydraulic
ASM. .... assembly	LH. .... left hand
BBC. .... blade brake clutch	NI. .... nylon insert
CARR. .... carriage	NPTF. .... national pipe thread fine
DEG. .... degrees	PFH. .... phillips flat head
EXT. .... external	PPH. .... phillips pan head
FH. .... flat head	PPHTF. .... phillips pan head thread forming
GA. .... gauge	PRH. .... phillips round head
HD. .... heavy-duty	PTH. .... phillips truss head
HF. .... hex flange	PTO. .... power-take-off
HH. .... hex head	RH. .... right hand
HHF. .... hex head flange	ROPS. .... roll-over protection system
HHFTF. .... hex head flange thread forming	SFH. .... slotted fillister head
HJ. .... hex jam	SHH. .... slotted hex head
HLH. .... hex lag head	SHWH. .... slotted hex washer head
HOC. .... height-of-cut	SPH. .... slotted pan head
HSBH. .... hex socket button head	SQH. .... square head
HSFH. .... hex socket flat head	SRH. .... slotted round head
HSH. .... hex socket head	STD. .... standard
HWH. .... hex washer head	TAP. .... self tapping
HWHTF. .... hex washer head thread forming	TTH. .... torx truss head

## Footnotes

- ❶ Not serviced separately



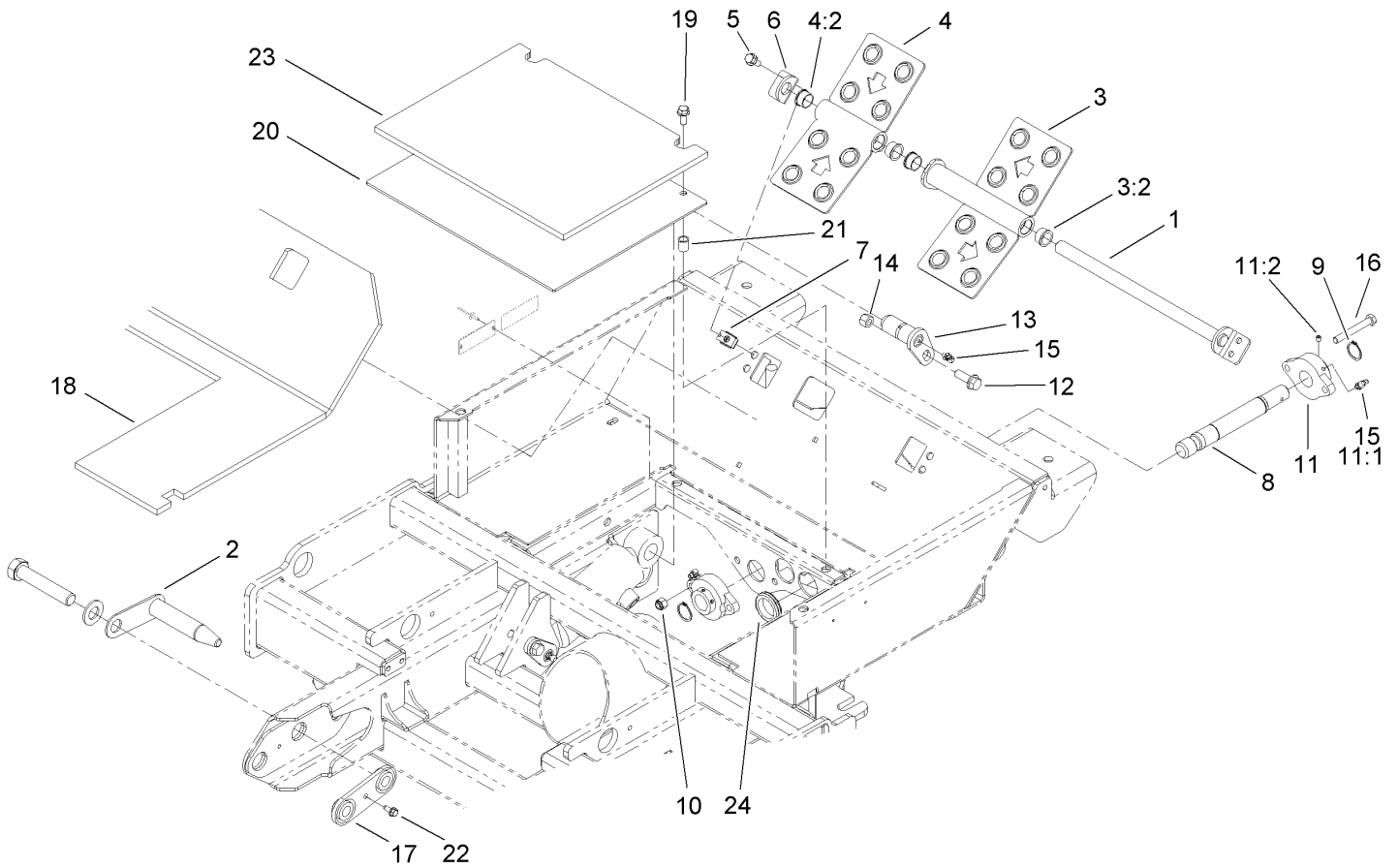
## Track and Frame Assembly

Ref	Part No.	Qty.	Description
1	23-7270	20	Nut-Wheel
2	110-5465	6	Wheel And Tire ASM
2:1	110-5467	1	Tire
2:2	110-5466	1	Wheel
2:3	232-27	1	Stem-Valve
3	110-9793-03	1	RH Pivot ASM
4	27-0410	2	Screw-Shoulder
5	108-9857	2	Lower Pivot Pin ASM
6	105-1088	2	Stud
7	108-5195-03	1	LH Pivot ASM
8	110-9765	2	Upper Pivot Pin ASM
9	99-5105	2	Bolt-Shoulder
10	3218-5	2	Nut-Jam
11	104-8300	2	Nut-Flange, NI
12	110-5454	2	Plate-Spacer
13	3254-2	8	Washer-Lock, Internal
14	3296-25	2	Nut-Lock, NI
15	302-60	2	Fitting-Grease, 90 DEG
16	30-8770	4	Washer
17	110-9767-03	1	Frame ASM
18	32104-107	8	Screw-HH
19	69-9290	8	Pad-Bumper
20	3256-3	8	Washer-Flat
21	108-5164	2	Drive Track ASM

Ref	Part No.	Qty.	Description
22	112-1693	2	Bogie ASM



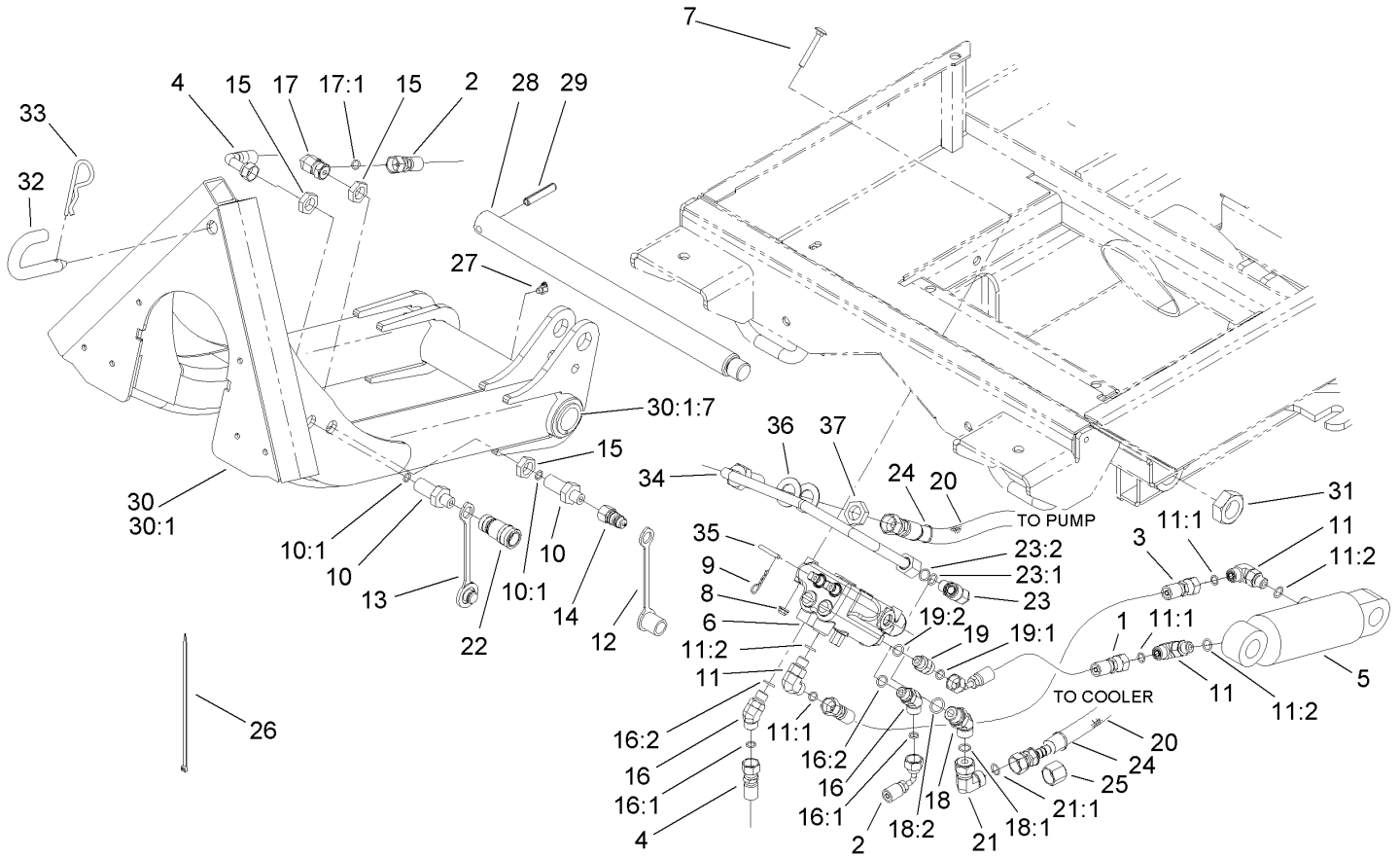




## Foot Control Assembly

Ref	Part No.	Qty.	Description
1	108-5181	1	Control Pivot Shaft ASM
2	108-9870	2	Coupler Pin ASM
3	112-9587	1	Pedal ASM-RH
3:2	256-252	2	Bearing-Flange
4	112-9588	1	Pedal ASM-LH
4:2	256-252	2	Bearing-Flange
5	3234-5	4	Screw-HHF
6	108-5178	1	Ear-Pivot
7	110-3510	4	Nut-Retainer
8	107-2604	1	Shaft
9	32151-29	2	Ring-Retaining
10	3296-39	2	Nut-Lock, NI
11	107-7851	2	Bearing-Flange, 2 Bolt
11:1	302-5	1	Fitting-Grease
11:2	3245-35	2	Screw-Set
12	3234-15	2	Screw
13	98-2654	2	Pivot Pin ASM
14	3296-48	2	Nut-Lock, NI
15	302-60	4	Fitting-Grease, 90 DEG
16	323-13	2	Screw-HH
17	110-9785	2	Retainer Plate ASM
18	112-9556	1	Floormat-Platform
19	3234-5	2	Screw-HHF
20	108-9866-03	1	Plate-Cover

Ref	Part No.	Qty.	Description
21	32148-7	2	Nut-Insert
22	32144-10	2	Screw-HWH
23	112-9555	1	Panel-Access, Floor
24	240-3	4	Grommet-Rubber



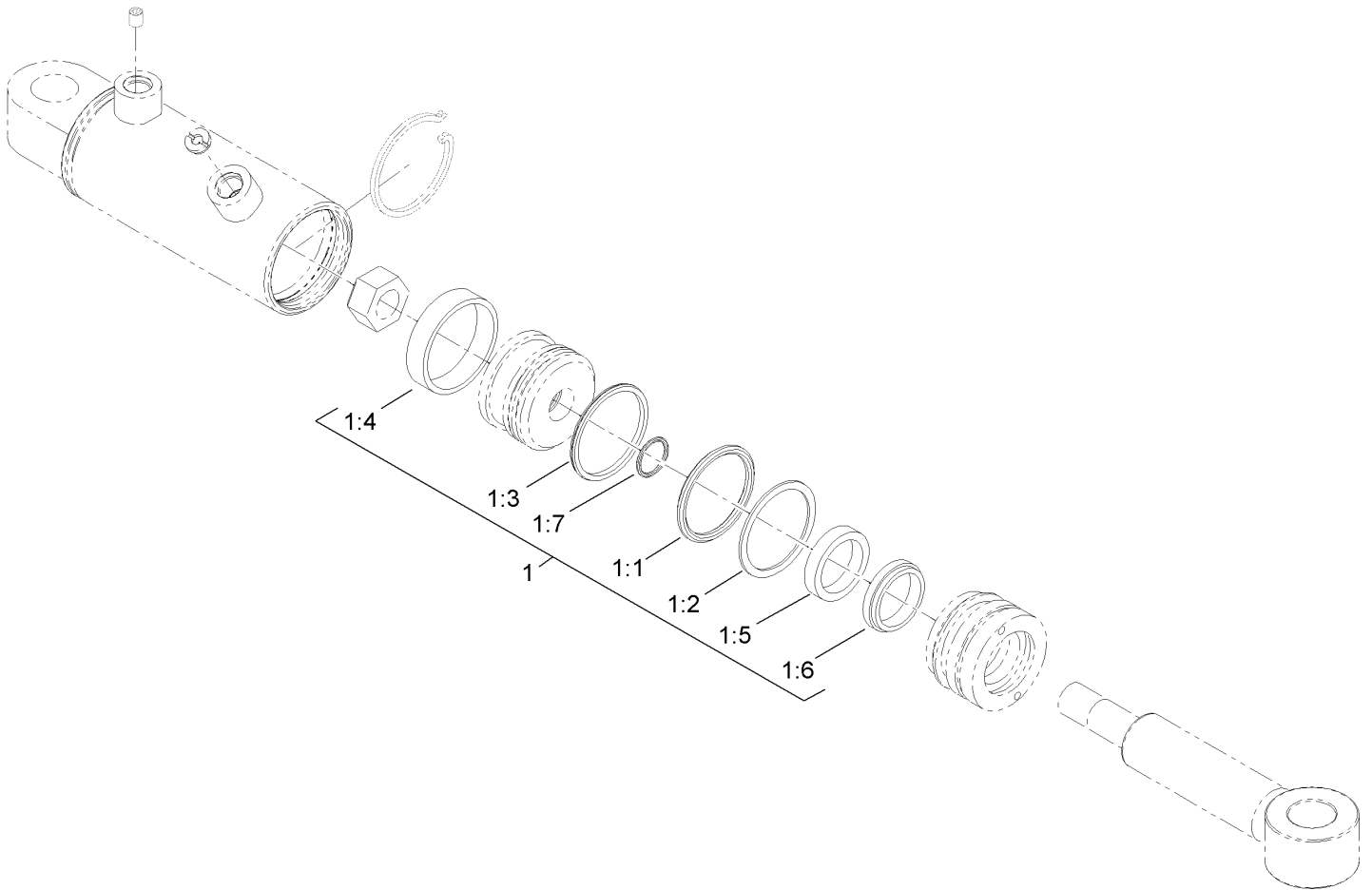
## Hydraulic Assembly

Ref	Part No.	Qty.	Description
1	110-8223	1	HYD Hose ASM
2	110-8222	1	HYD Hose ASM
3	110-8224	1	HYD Hose ASM
4	110-8225	1	HYD Hose ASM
5	112-9549	1	Cylinder-HYD
6	110-3588	1	Valve-Hydraulic, 2 Spool
7	3230-33	2	Screw-CARR
8	104-7201	2	Nut-HF
9	9335044	2	Pin-Hair
10	108-9800	2	Fitting-Bulkhead
10:1	237-22	1	O-Ring
11	340-77	3	Fitting-HYD, 90 DEG
11:1	237-22	1	O-Ring
11:2	237-42	1	O-Ring
12	353-985	1	Cap-Dust
13	353-984	1	Plug-Dust
14	63-1240	1	Nipple-Disconnect, Quick
15	340-70	3	Nut-Lock
16	340-87	2	Fitting-HYD, 45 DEG
16:1	237-22	1	O-Ring
16:2	237-42	1	O-Ring
17	340-159	1	Fitting-HYD, 90 DEG
17:1	237-22	2	O-Ring
18	340-101	1	Fitting-HYD, 45 DEG

Ref	Part No.	Qty.	Description
18:1	237-30	1	O-Ring
18:2	237-79	1	O-Ring
19	340-2	1	Fitting-HYD, Straight
19:1	237-22	1	O-Ring
19:2	237-42	1	O-Ring
20	112-1685	2	Cover-Hose
21	94-6031	1	Fitting-HYD
21:1	237-30	1	O-Ring
22	63-1220	1	Coupler-Disconnect, Quick
23	340-99	1	Fitting-HYD, 90 DEG
23:1	237-30	1	O-Ring
23:2	237-42	1	O-Ring
24	3290-378	8	Tie-Cable
25	340-152	2	Cap-HYD
26	3290-379	4	Tie-Cable
27	302-11	1	Fitting-Lube, 45 DEG
28	107-2622	1	Pin-Lift Arm
29	32121-110	1	Pin-Roll, Slotted
30	112-6370-03	1	Lift Arm ASM
30:1		1	Arm-Lift
30:1:7	104-0015	2	Bushing-Flange
31	3296-49	1	Nut-Lock, NI
32	110-9792	1	Pin-Lock
33	3290-256	1	Pin-Hair

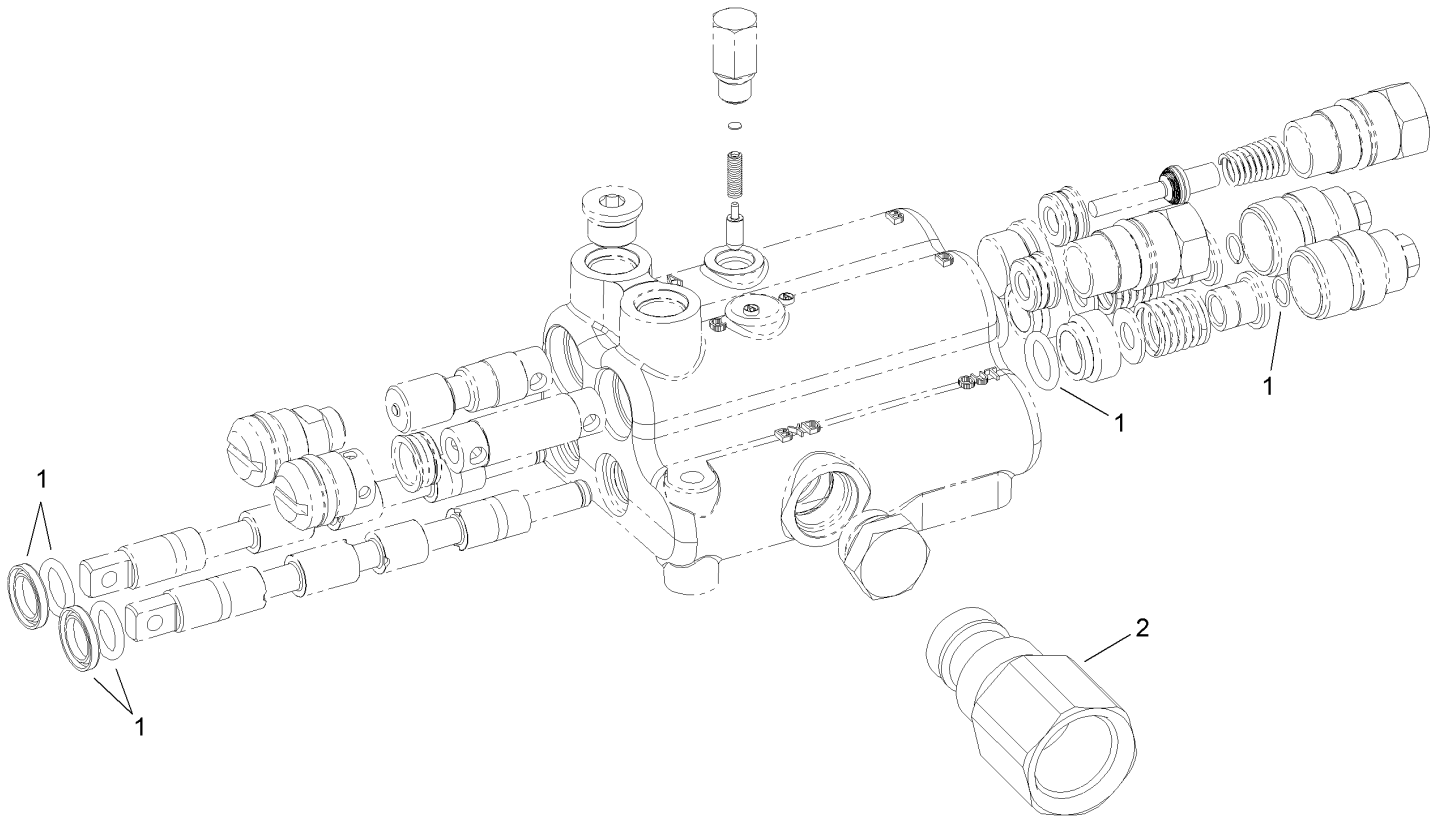






## Hydraulic Cylinder Assembly No. 112-9549

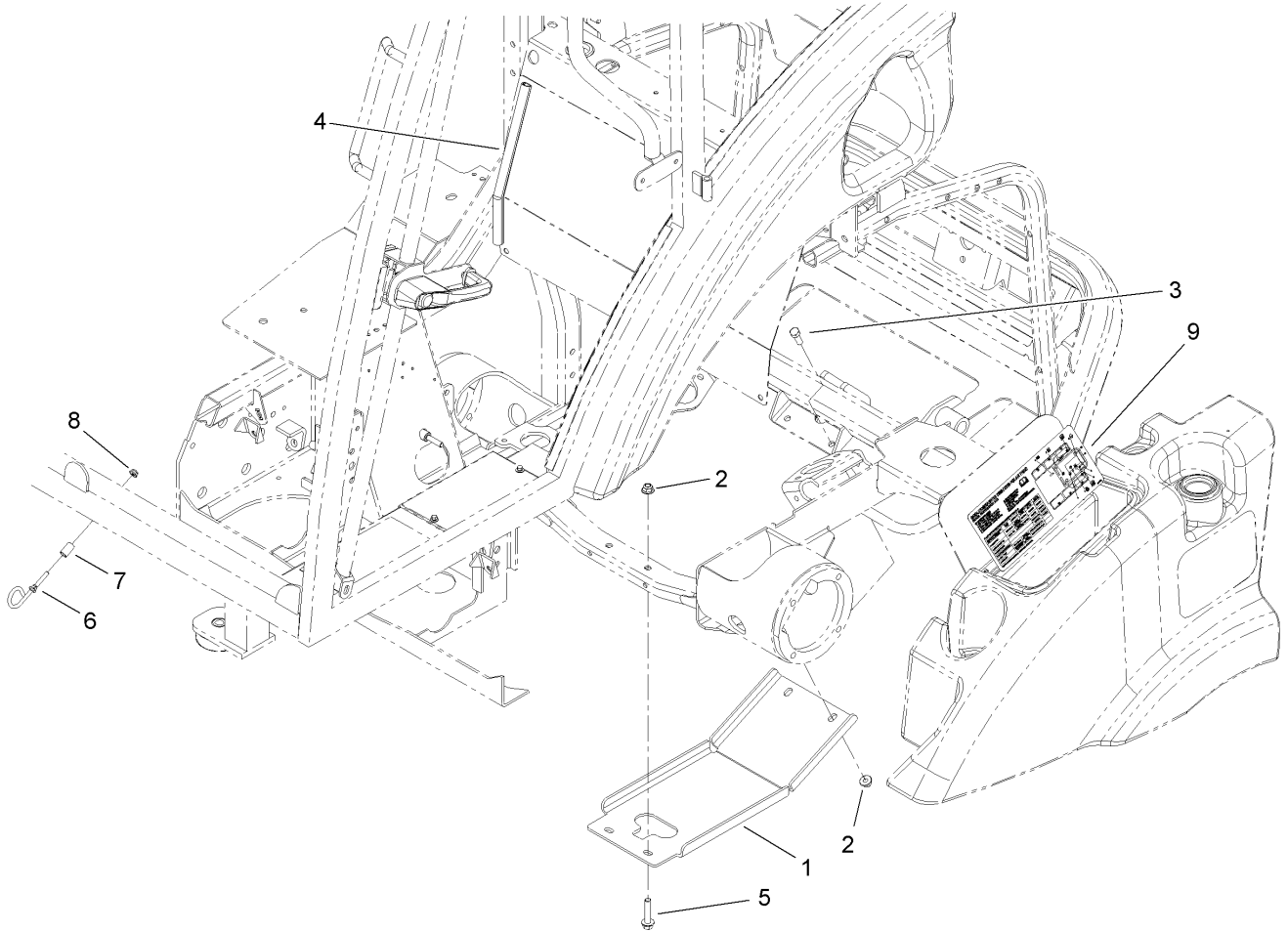
Ref	Part No.	Qty.	Description
1	114-4049	1	Seal Kit
● 1:1		1	O-Ring
● 1:2		1	Backup
● 1:3		1	Seal-Bp
● 1:4		1	Ring-Wear
● 1:5		1	Polypak
● 1:6		1	Seal-Dust
● 1:7		1	O-Ring



## 2-Spool Hydraulic Valve Assembly No. 110-3588

Ref	Part No.	Qty.	Description
1	99-3530	1	Seal Kit
2	110-5490	1	Power Beyond Sleeve Kit

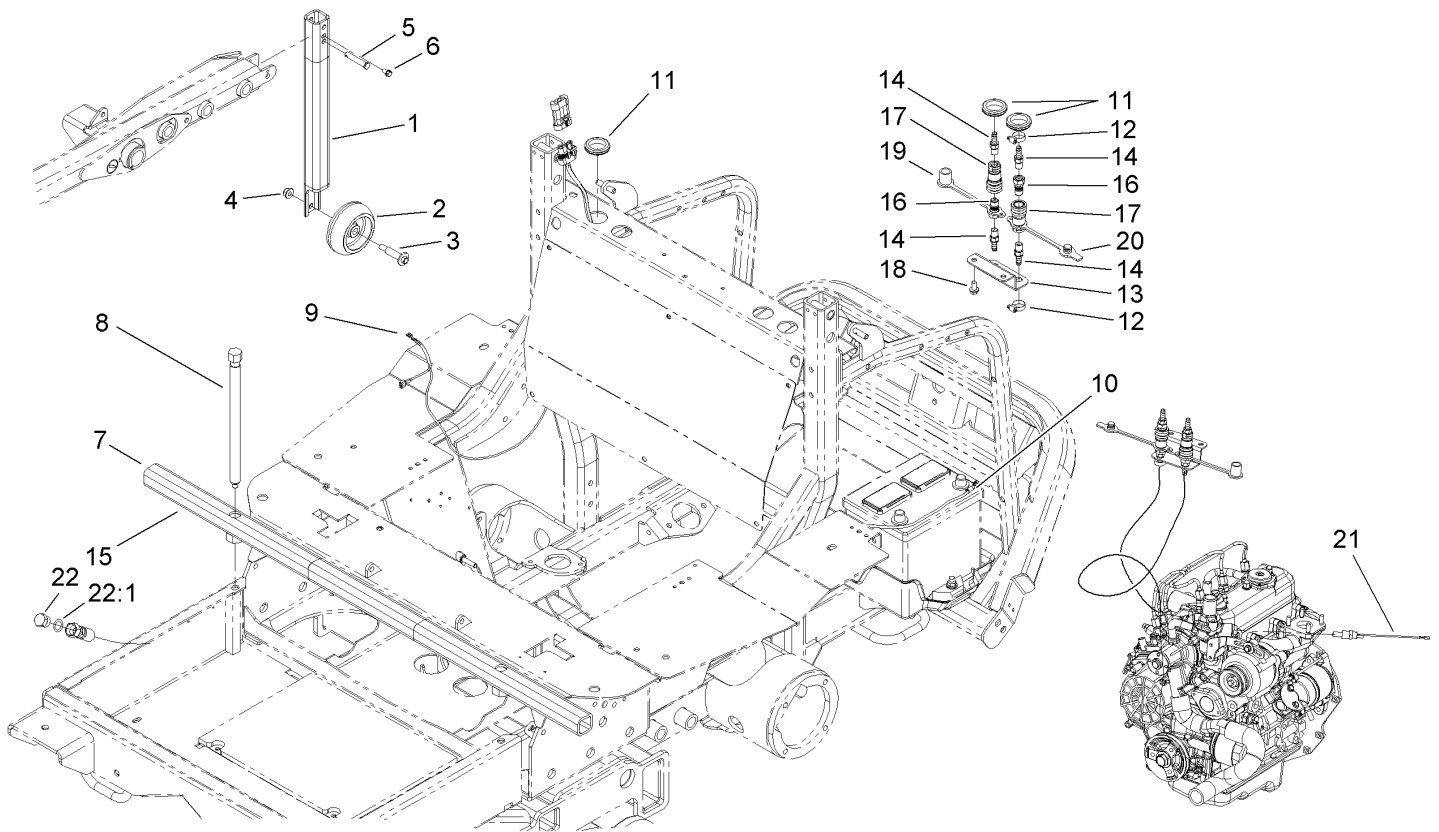
--	--	--	--



### Skid Plate Assembly

Ref	Part No.	Qty.	Description
1	110-5516-03	1	Plate-Skid
2	104-8301	4	Nut-Flange, NI
3	323-6	2	Screw-HH
4	112-9581	2	Seal-Bulb
5	3234-19	2	Screw-HHF
6	107-3908	1	Guide-Rope, Upper
7	85-0290	1	Spacer-Pivot, Seat
8	104-7201	1	Nut-HF
9	114-4043	1	Decal-Service Instructions

--	--	--	--



## Change Over Assembly

Ref	Part No.	Qty.	Description
1	110-5491-03	2	Tube-Upright, Deck Removal
2	701756	2	Wheel-Gage
3	56-6591	2	Bolt-Wheel
4	104-8301	2	Nut-Flange, NI
5	283-82	2	Pin-Clevis
6	32144-4	2	Screw-HWH
7	110-5456-03	1	Tube ASM
8	112-6358	2	Screw
9	110-1667	1	Harness-Wire
10	108-9455	1	Harness-Wire, Fusible Link
11	240-3	3	Grommet-Rubber
12	2412-36	4	Clamp-Hose
13	112-1498	1	Plate-Bulkhead
14	108-0342	4	Fitting-Straight
15	112-6312	3	Decal-Warning
16	108-9899	2	Coupler
17	108-9898	2	Coupler
18	32144-14	2	Screw-HWHTF
19	106-7881	1	Cap-Dust, HYD
20	106-7882	1	Plug-Dust, HYD
21	112-6347	1	Switch-Temp, Dual
22	106-8100	2	Plug-HYD
22:1	237-79	1	O-Ring


## NOTES

# NOTES

# NOTES

