



QAS Bunker Pump Sand/Infield Pro[®] 3040 and 5040 Traction Unit

Model No. 08765 - 280000001 and up.

Parts Catalog

Ordering Replacement Parts

To order replacement parts, please supply the part number, the quantity, and the description of each part desired.

Understanding Reference Numbers

Each identified part in an illustration has a reference number. The reference number for a part also appears in the parts list, along with other information about the part.

This catalog uses two special reference number formats, one to indicate parts in a service assembly and another to indicate the quantity of a given part in an illustration.

Service Assembly Reference Numbers

Parts in service assemblies have reference numbers in the form a:b. The a represents the reference number of the entire service assembly and the b represents a sequential number unique to each part within the service assembly.

For example, a wheel assembly might be identified by reference number 6, the tire by 6:1, the valve by 6:2, and the wheel by 6:3. When you order the assembly identified by reference number 6, you receive all parts identified by reference numbers 6:1, 6:2, and 6:3. However, you may also order any part individually. Reference numbers of this type appear in illustrations and in part lists.

Reference Numbers Indicating Quantity

In an illustration, if a reference number indicates more than one part, the reference number has the form nX y. The n represents the quantity of the part, the X is the multiplication symbol, and the y represents the reference number.

For example, in an illustration, the reference number 2X 37 means that two of the parts identified by reference number 37 are indicated.

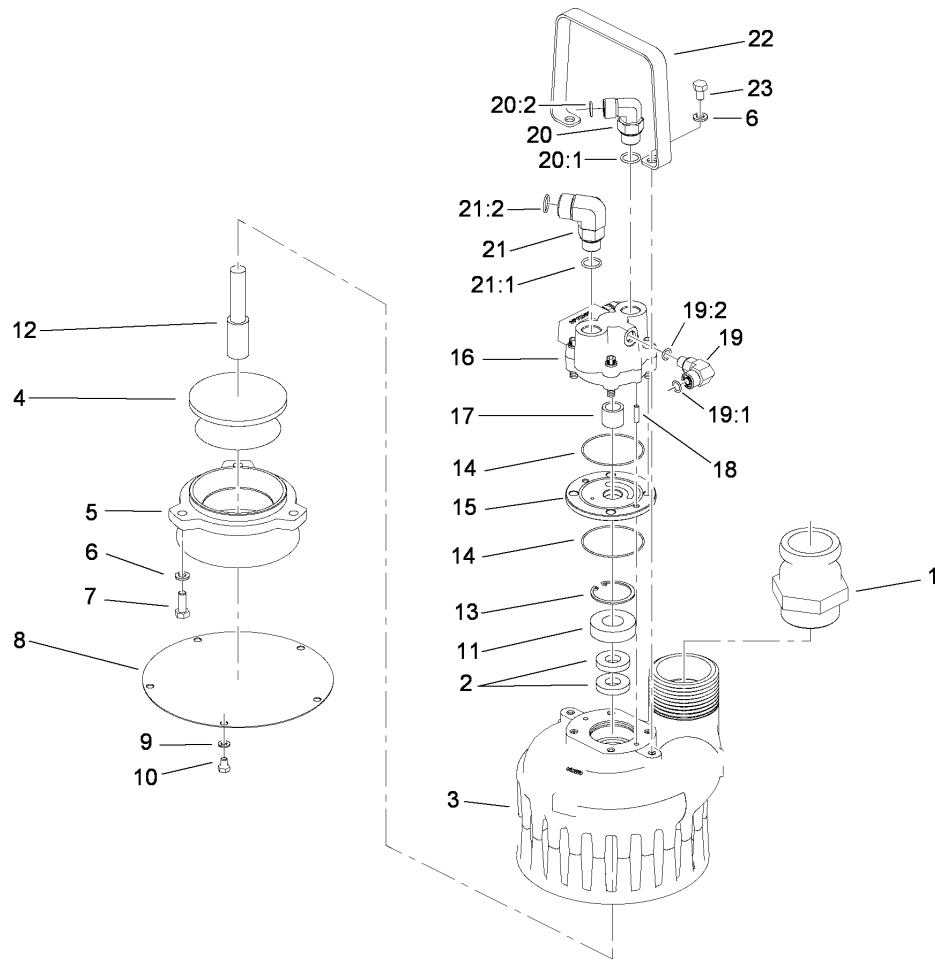
Contents

Description	Page	Description	Page
Pump Assembly 3	Spray Head Assembly 6
Lower Hose Assembly No. 114-4377 4	Adapter Assembly 7
Centrifugal Water Pump Assembly No. 114-0629 5	Link Assembly No. 110-8105 8
		Attachments and Accessories List 9

Part Description Abbreviations

Part descriptions in this catalog may include the following abbreviations.

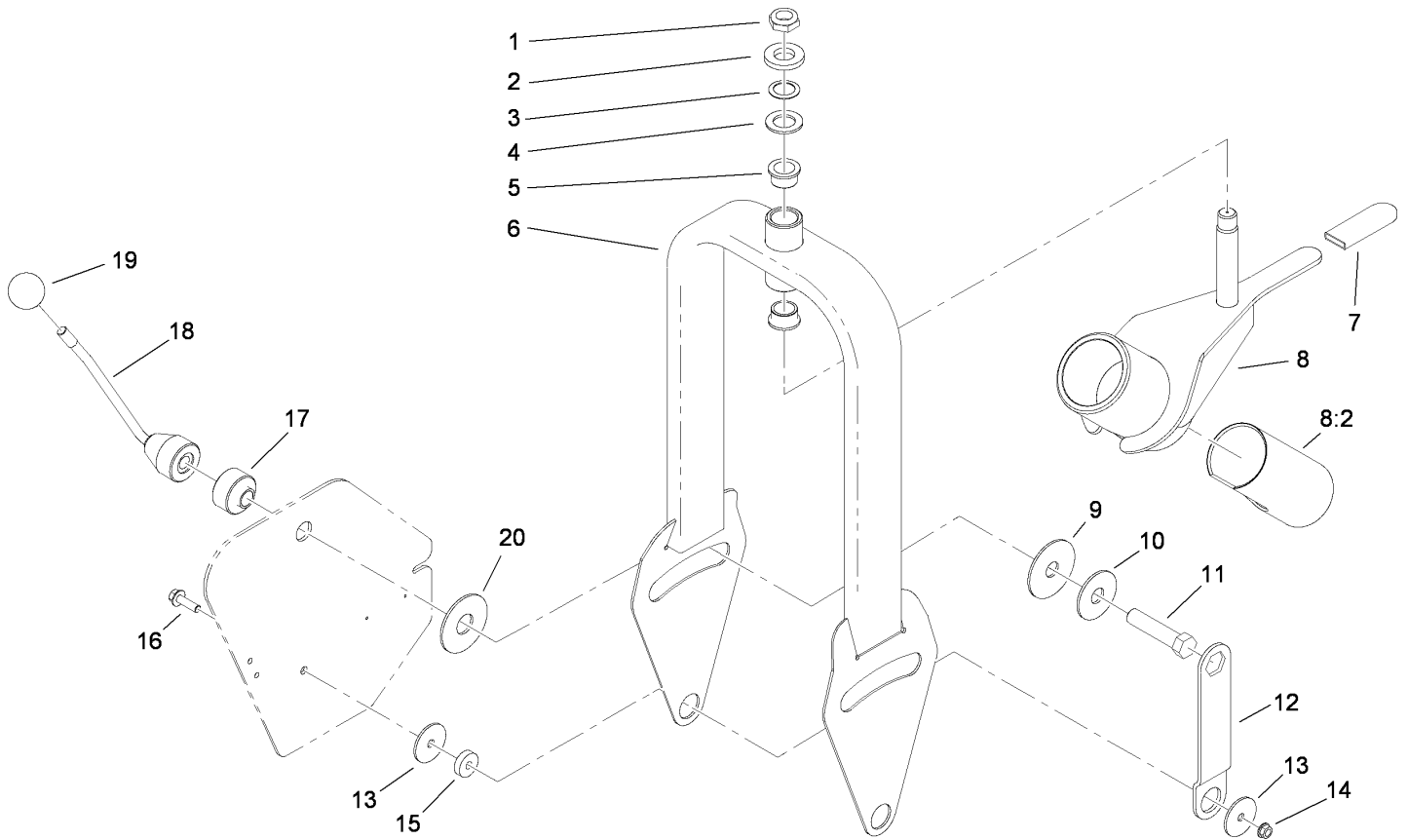
AR. as required	HYD. hydraulic
ASM. assembly	LH. left hand
BBC. blade brake clutch	NI. nylon insert
CARR. carriage	NPTF. national pipe thread fine
DEG. degrees	PFH. phillips flat head
EXT. external	PPH. phillips pan head
FH. flat head	PPHTF. phillips pan head thread forming
GA. gauge	PRH. phillips round head
HD. heavy-duty	PTH. phillips truss head
HF. hex flange	PTO. power-take-off
HH. hex head	RH. right hand
HHF. hex head flange	ROPS. roll-over protection system
HHFTF. hex head flange thread forming	SFH. slotted fillister head
HJ. hex jam	SHH. slotted hex head
HLH. hex lag head	SHWH. slotted hex washer head
HOC. height-of-cut	SPH. slotted pan head
HSBH. hex socket button head	SQH. square head
HSFH. hex socket flat head	SRH. slotted round head
HSH. hex socket head	STD. standard
HWH. hex washer head	TAP. self tapping
HWHTF. hex washer head thread forming	TTH. torx truss head



Centrifugal Water Pump Assembly No. 114-0629

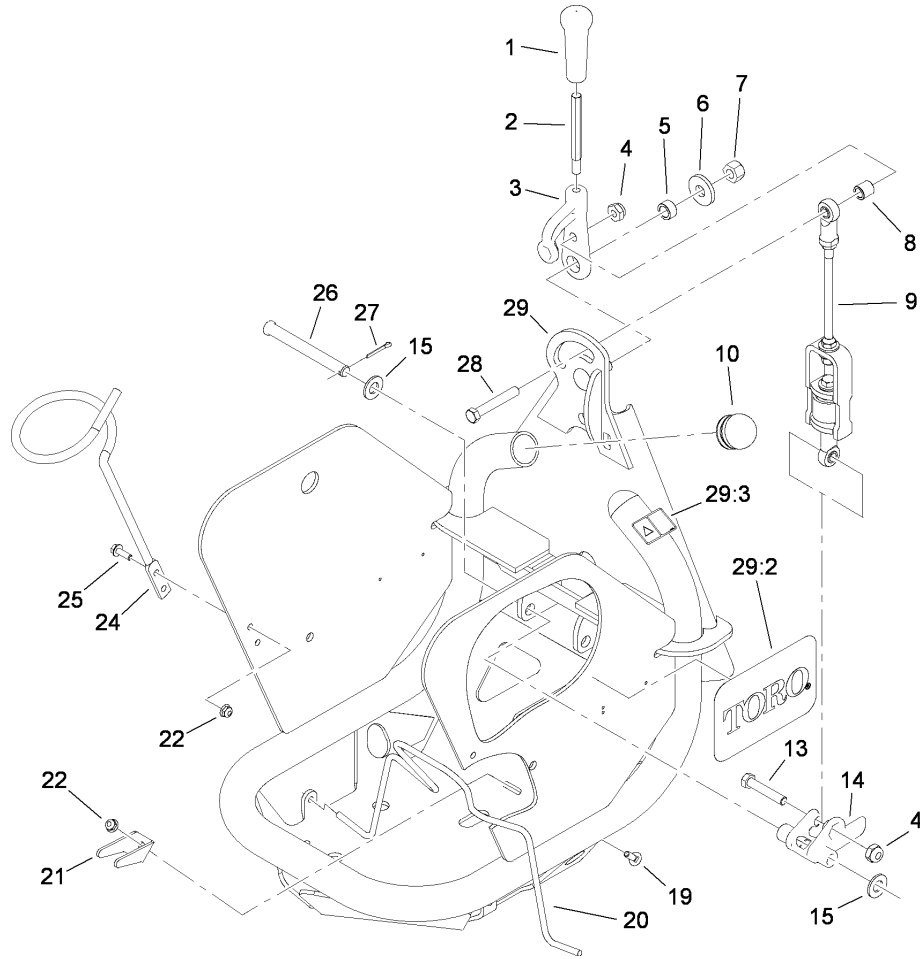
Ref	Part No.	Qty.	Description
1	114-4396	1	Adapter-Male
2	115-2066	2	Seal-Lip
3	115-2059	1	Housing-Pump
4	115-2065	1	Impeller
5	115-2057	1	Flange-Suction
6	3253-4	5	Washer-Lock
7	322-4	3	Screw-HH
8	115-2058	1	Plate-Cover
9	100-4209	5	Washer-Lock / Sp
10	321-1	5	Screw-HH
11	115-2072	1	Bearing-Ball
12	115-2071	1	Shaft
13	115-2070	1	Ring-Retaining
14	115-2069	2	Ring-Quad
15	115-2056	1	Plate-Thrust
16	115-2055	1	Motor-Hydraulic
17	115-2067	1	Bearing-Needle
18	115-2068	2	Pin-Dowel
19	340-97	1	Fitting-HYD, 90 DEG
19:1	237-22	1	O-Ring
19:2	237-78	1	O-Ring
20	340-98	1	Fitting-HYD, 90 DEG
20:1	237-79	1	O-Ring
20:2	237-30	1	O-Ring

Ref	Part No.	Qty.	Description
21	340-153	1	Fitting-Elbow, 90 DEG
21:1	237-79	1	O-Ring
21:2	237-151	1	O-Ring
22	115-2054	1	Handle-Pump
23	322-1	2	Screw-HH



Spray Head Assembly

Ref	Part No.	Qty.	Description
1	3296-60	1	Nut-Lock, NI
2	115-2096	1	Spacer
3	21-9150	1	Washer-Belleville
4	85-5770	1	Washer-Thrust
5	256-132	2	Bushing-Flange
6	115-2050-03	1	Pivot Tower ASM
7	21-1880	1	Grip-Handle
8	115-2052	1	Handle ASM
8:2	115-2077	1	Bearing-Sleeve
9	82-9010	1	Disc-Friction
10	80-2930	1	Washer-Flat
11	93-2199	1	Screw-HH, RH
12	114-4354-03	1	Bracket-Tilt
13	83-1040	4	Washer-Flat
14	3290-357	2	Nut-HHF, Whiz
15	105-7788	2	Spacer
16	3234-24	2	Screw-HHF
17	115-2083	1	Hub
18	93-2400-03	1	Lockup Handle ASM
19	233-48	1	Knob
20	31-0390	1	Disc-Friction



Adapter Assembly

Ref	Part No.	Qty.	Description
1	99-7984	1	Knob-Soft Grip, Push-On
2	114-4320	1	Rod-Handle
3	112-7695-03	1	Handle
4	3296-44	2	Nut-Lock, NI
5	112-0038	1	Spacer
6	92-2651	1	Washer
7	3296-25	1	Nut-Lock, NI
8	99-2058	1	Spacer-Support, Handle
9	110-8105	1	Link ASM
10	110-3469	2	Plug-Head, Ball
13	323-10	1	Screw-HH
14	112-7686	1	Latch
15	3256-26	2	Washer-Flat
19	3229-1	1	Screw-CARR
20	114-4357	1	Latch-Spring
21	115-2081	1	Tab-Keeper
22	104-7201	3	Nut-HF
24	108-7585	1	Guide-Hose
25	3234-4	2	Screw-HHF
26	283-83	1	Pin-Clevis
27	3272-11	1	Pin-Cotter
28	323-12	1	Screw-HH
29	115-5601	1	Adapter ASM
29:2	105-1217	2	Decal

Ref	Part No.	Qty.	Description
29:3	106-5517	1	Decal-Surface, Hot

Attachments and Accessories

For 08765 - QAS Bunker Pump, Sand/Infield Pro 3040 and 5040 Traction Unit

Product Name

Model/Part

Remote Pump Discharge Kit 115-2084

NOTES

NOTES

