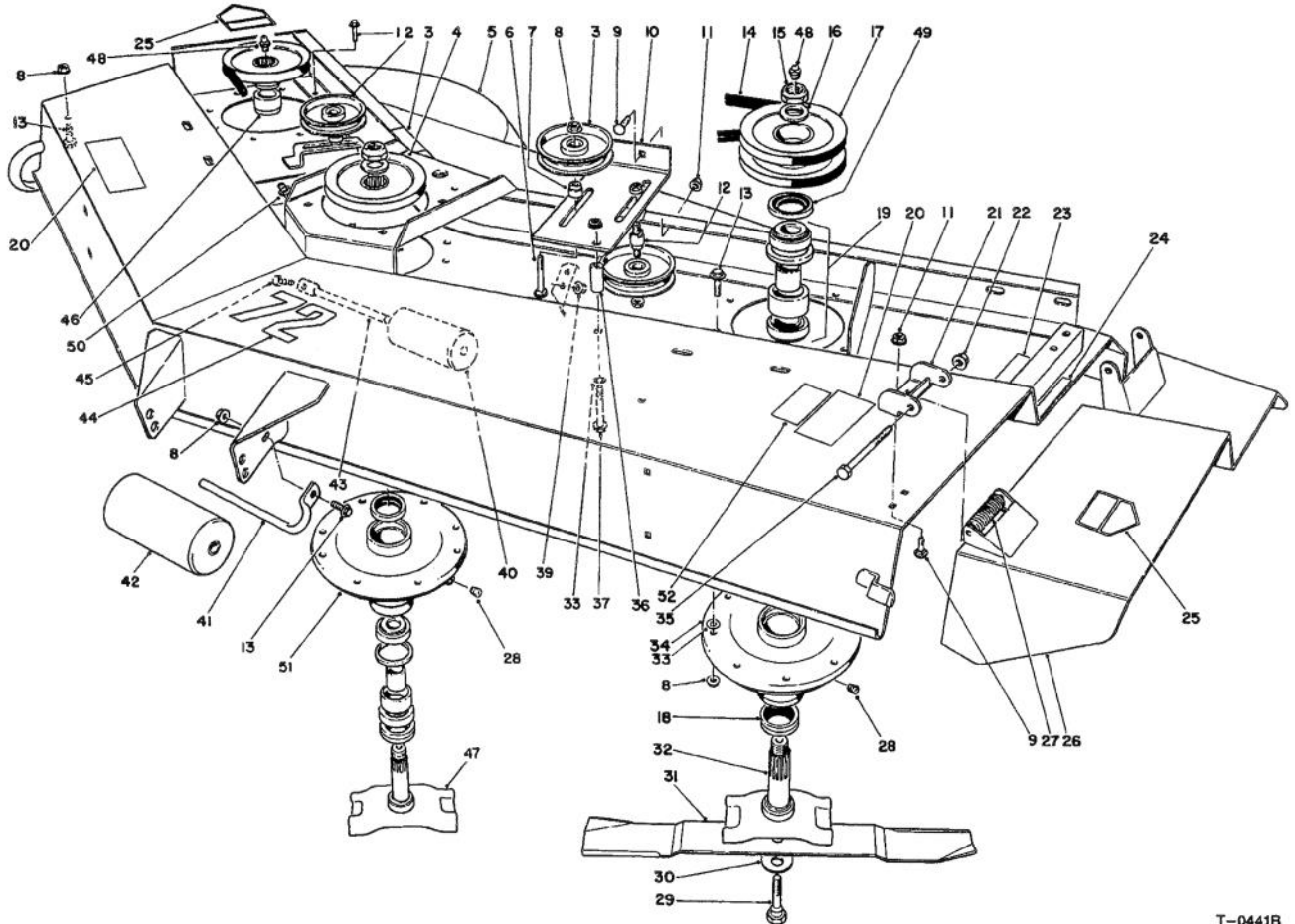




MODEL NO. 30722-40001 & UP

PARTS CATALOG

72" SIDE DISCHARGE CUTTING UNIT
(For Groundsmaster 300 Series)

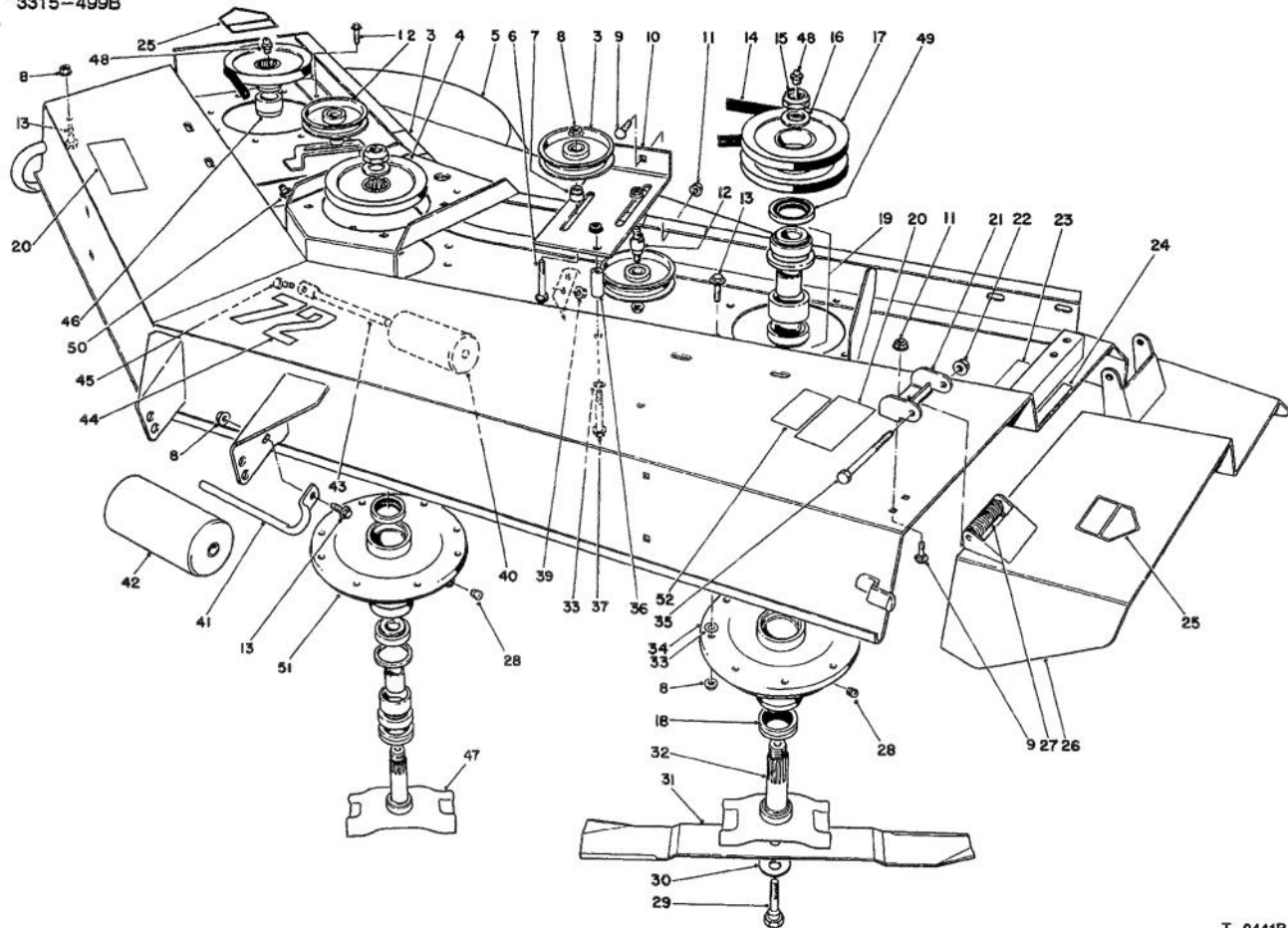


T-0441B

DECK ASSEMBLY

Ref. No.	Part No.	Description	No. Used
1	3234-11	Screw - Hex. Hd. Flange	4
2	26-1840	Idler Pulley	3
3	67-5360	Decal - Danger	2
4	26-1760	Pulley	2
5	14-7409	Deck W.A.	1
6	3231-29	Bolt - Carriage	2
7	26-1860	Spacer - Idler Pulley	2
8	32128-21	Nut - Flange	33
9	3231-27	Bolt - Carriage	6
10	26-1870	Idler Mount L.H.	1
11	3290-357	Nut - Flange	6
12	26-1850	Stud - Idler	1
13	3234-1	Screw - Hex. Hd. Flange	24
14	21-0890	V-Belt	3
15	3296-49	Nut	3
16	3-8514	Washer	3

Ref. No.	Part No.	Description	No. Used
17	84-2060	Pulley L.H.	1
18	253-138	Seal - Oil	6
19	49-8320	Bearing & Spacer Set	3
20	66-1340	Decal - Danger	2
21	51-1530	Hinge Bracket	2
22	32128-23	Nut - Lock Flange	2
23	68-7280	Decal - Blade Bolt Torque	1
24	66-6380	Decal - Deflector Missing	1
25	43-8480	Decal - Danger	2
26	51-1470	Deflector	1
27	51-1550	Spring	2
28	285-17	Plug	4
29	26-1820	Screw - Cap Hex. Hd.	3
30	26-1990	Washer - Belleville	3
31	29-5530	Blade	3
32	84-2070	Spindle - Outer	2

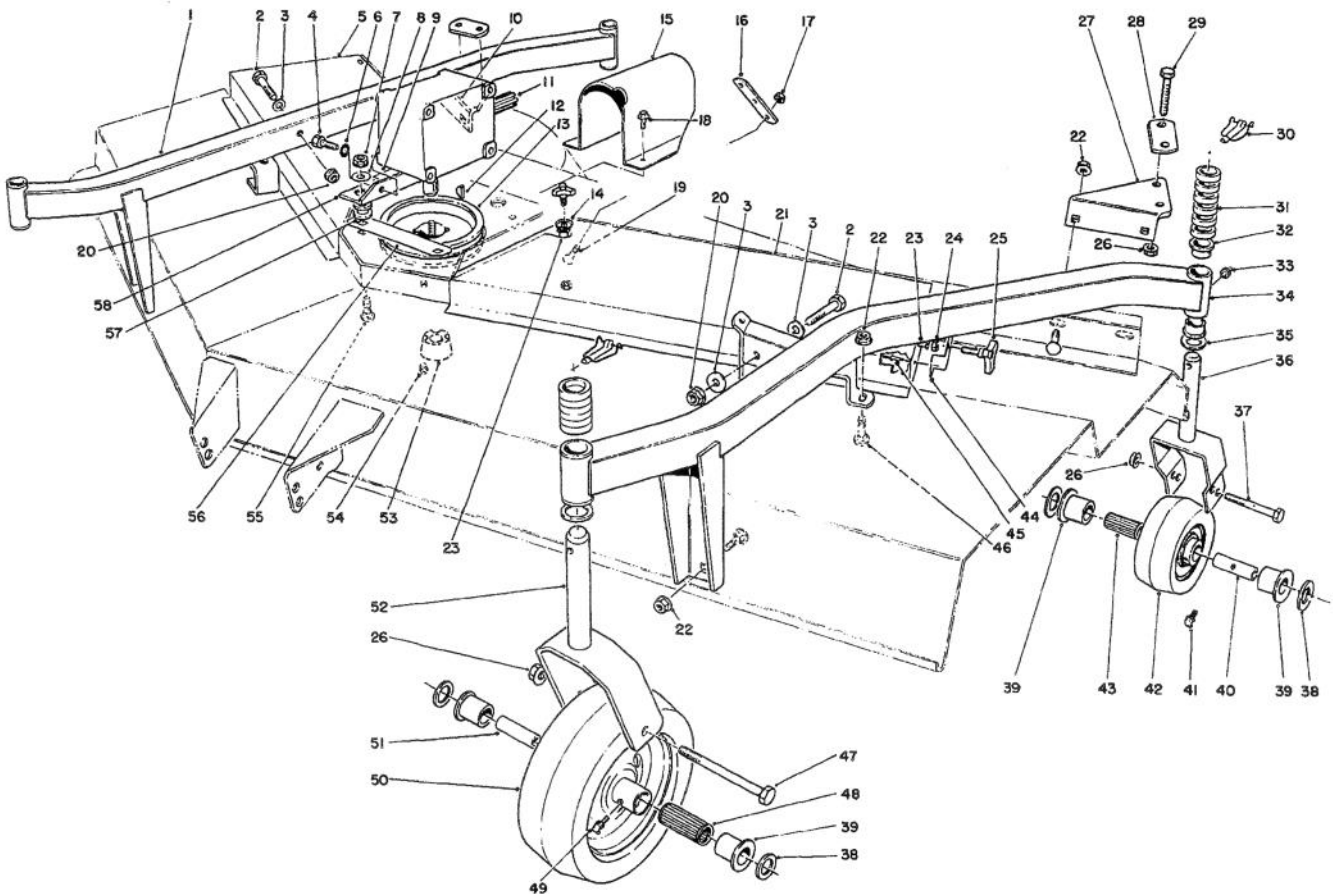


T-0441B

DECK ASSEMBLY (Continued)

Ref. No.	Part No.	Description	No. Used	Ref. No.	Part No.	Description	No. Used
33	3256-24	Washer	A/R	44	57-0280	Decal - 72"	1
34	84-2020	Outer Spindle Housing	2	45	322-4	Screw - Cap. Hex Hd.	2
35	325-17	Screw - Cap Hex. Hd.	2	46	84-2090	Spacer R.H. Spindle	1
36	26-1880	Spacer - Idler Mount	1	47	84-5370	Spindle Center	1
37	323-12	Screw - Cap Hex. Hd.	1	48	302-5	Fitting - Graese	3
39	32128-25	Nut - Lock Flange	2	49	253-154	Seal - Oil	3
40	36-1740	Roller - Deck	2	50	302-52	Fitting - Grease	1
41	68-6840	Shaft - Roller	1	51	84-2080	Center Spindle Housing	1
42	68-6710	Roller - Deck	1	52	92-7847	Decal - Warning	1
43	62-4480	Rod - Roller	2	*	23-2410	Blade - High Sail (Opt.)	3

*Not Illustrated



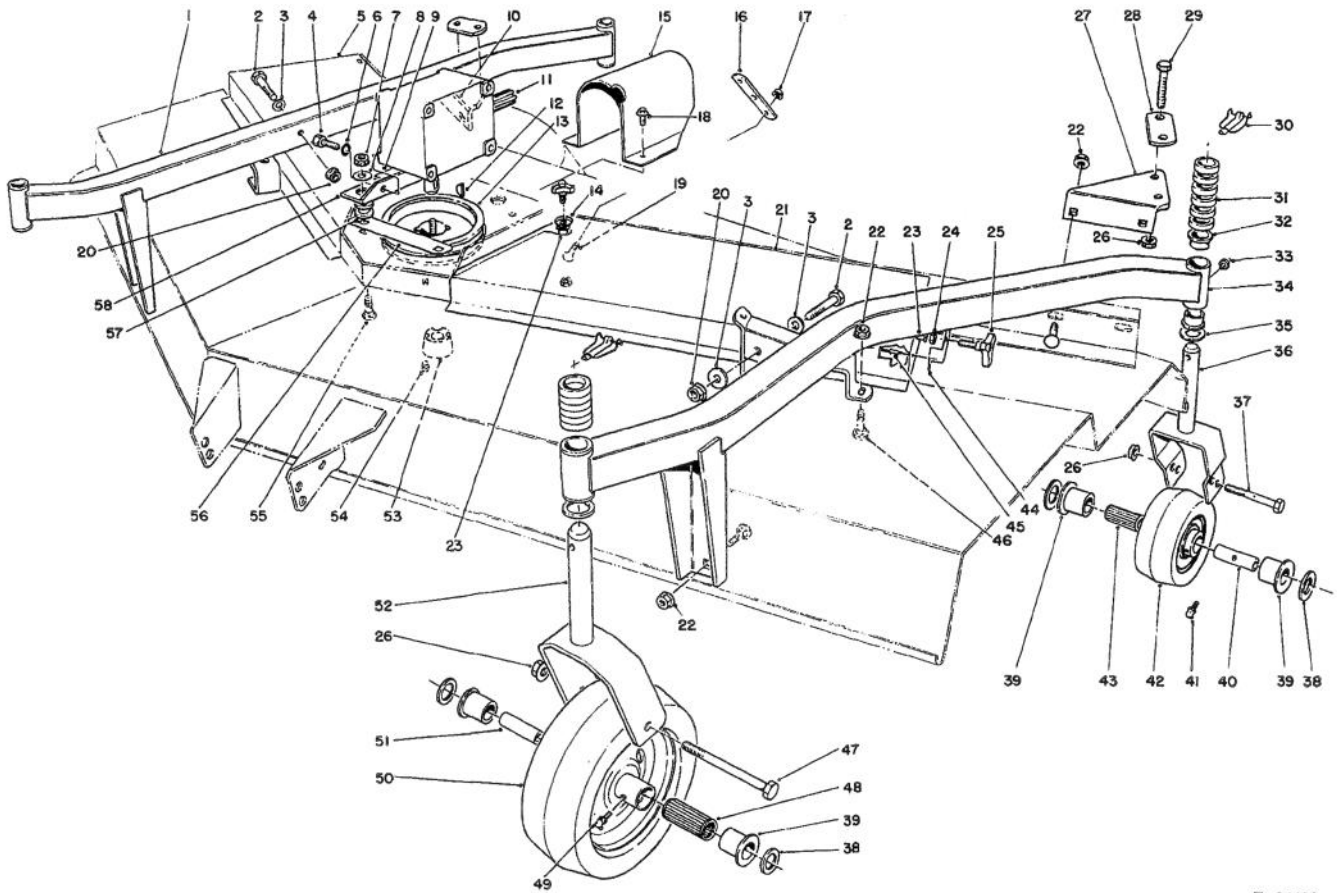
T-0442A

CARRIER FRAME ASSEMBLY

Ref. No.	Part No.	Description	No. Used
1	26-1490	Caster Arm R.H. (Incl. Ref. #32)	1
2	324-12	Screw - Cap Hex Hd.	4
3	66-6480	Washer - Flat	4
4	323-4	Screw - Cap Hex Hd.	4
5	14-5869	Cover - Deck R.H. (Incl. Ref. #24, 25, 44-45)	1
6	3253-21	Washer - Lock	4
7	32128-21	Nut - Flange	4
8	63-8410	Washer	4
9	70-2560	Decal - Lube	1
10	39-3340	Bracket - Clamp	1
11	68-6810	Gear Case Assembly	1
12	3257-5	Key - Woodruff	1
13	26-1400	Pulley - Deck	1
14	66-6310	Washer - Cup	2
15	63-1970	Shroud - Universal	1
16	21-3770	Strap - Lift	1
17	3290-357	Nut - Flange	2
18	32104-82	Screw - Cap Self-Tapping	2
19	3231-27	Bolt - Carriage	2
20	32128-42	Nut - Flange	4
21	14-5879	Cover - Deck L.H. (Incl. Ref. #24, 25, 44-45)	1
22	32128-49	Nut - Flange	12
†23	3290-469	Nut - Grip	4

†Special tool required to install.

Ref. No.	Part No.	Description	No. Used
24	3296-59	Nut - Lock	4
25	27-4570	Knob	4
26	32128-23	Nut - Lock Flange	8
27	39-7450	Bracket - Clamp	1
28	39-3330	Bar - Caster Clamp	2
29	325-14	Screw - Cap Hex Hd.	4
30	3290-384	Pin - Lynch	4
31	63-0070	Spacer - 1/2	24
32	28-9290	Bushing - Special	8
33	302-5	Fitting - Grease	4
34	26-1430	Caster Arm (Incl. Ref. #32)	1
35	3-6781	Washer	4
36	75-9680	Fork - Caster, Rear	2
37	325-18	Screw - Cap Hex Hd.	2
38	3256-6	Washer - Flat	8
39	62-5580	Bushing	8
40	63-1770	Spanner - Rear	2
41	302-11	Fitting - Grease	2
42	63-8400	Wheel - Caster Rear (Incl. Ref. #39, 41 & 43)	2
43	63-8580	Bearing - Roller	2
44	66-1260	Bracket - Knob	2
45	3269-5	Rivet - Pop	4
46	3233-2	Bolt - Carriage	12
47	325-22	Screw - Cap Hex Hd.	2

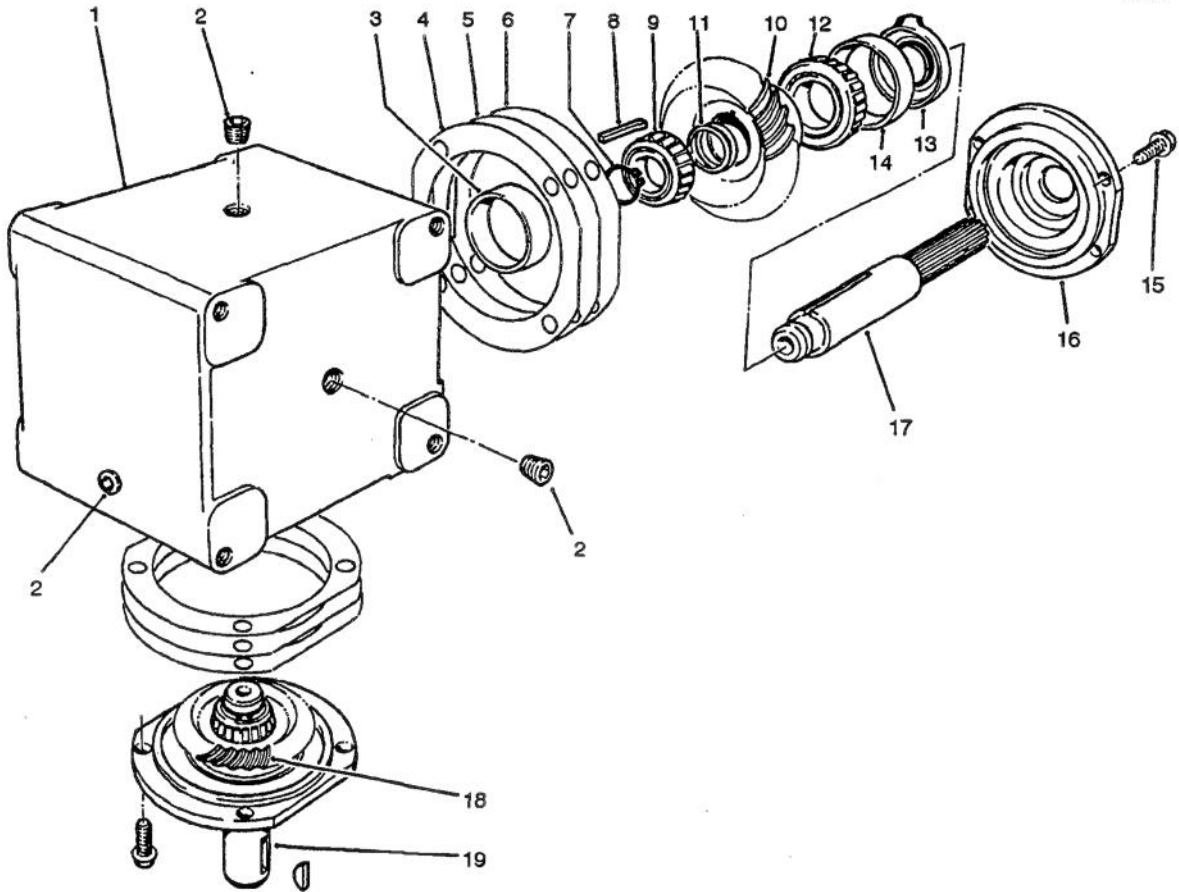


T-0442A

CARRIER FRAME ASSEMBLY (Continued)

Ref. No.	Part No.	Description	No. Used	Ref. No.	Part No.	Description	No. Used
48	83-4740	Bearing - Roller	2	54	3247-4	Screw - Set	2
49	302-40	Fitting - Grease	2	55	3231-26	Bolt - Carriage	4
50	92-1655	Wheel - Caster - Front (Inc. Ref. #39, 48 & 49)	2	56	68-9890	Cover - Gear Box Front	1
51	62-4340	Spanner - Front	2	57	63-9750	Mount - Isolation	4
52	26-1530	Fork - Caster, Front	2	58	68-8560	Bracket - Gear Box	2
53	23-1640	Bushing - TaperLock (Incl. Ref. #54)	1	59	26-1190	Plate - Reinforcement	2
				*	12-1509	Pneumatic Tire & Wheel (Optional)	2

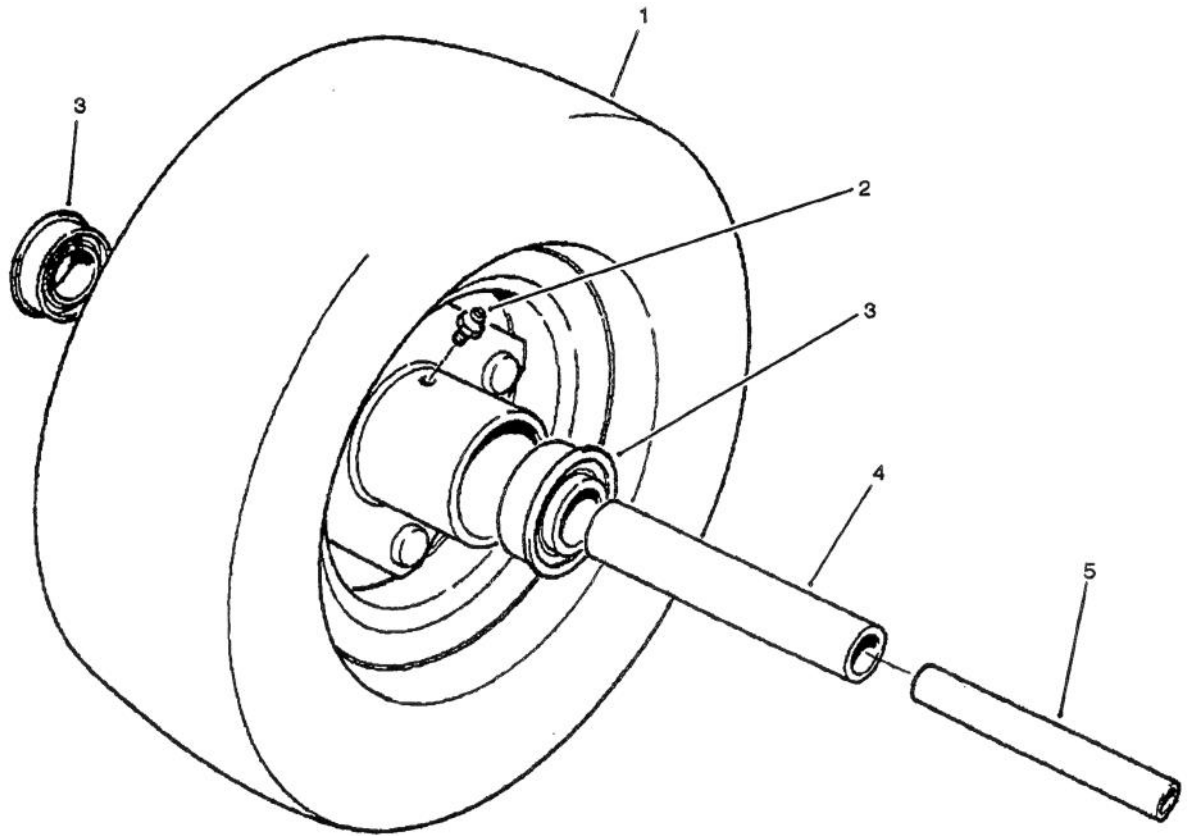
*Not Illustrated



T-0977

GEAR BOX ASSEMBLY NO. 68-6810

Ref. No.	Part No.	Description	No. Used	Ref. No.	Part No.	Description	No. Used
1	68-7030	Housing	1	11	72-9370	Shim (.020 in.)	4
2	62-3490	Plug - Pipe (Solid)	4	12	254-94	Cone - Gear	1
3	62-3360	Cup - Bearing	2	13	62-3400	Seal	2
4	62-3420	Gasket (.015 in.)	A/R	14	62-3340	Cup - Bearing	2
5	62-3430	Gasket (.005 in.)	A/R	15	62-3310	Screw - Cap	8
6	62-3440	Gasket (.003 in.)	A/R	16	62-3410	Cap	2
7	68-7070	Ring - Retaining	2	17	68-7040	Shaft	1
8	62-3380	Key	2	18	68-7060	Gear	1
9	62-3370	Cone - Bearing	2	19	68-7050	Shaft	1
10	68-7080	Gear	1				



T-1177

10" SEGMENTED FRONT CASTER WHEEL (Optional)

Ref. No.	Part No.	Description	No. Used
1	76-1880	10" Segmented Tire Assy. (Incl. Ref. #1-5)	1
2	302-5	Fitting - Grease	1

Ref. No.	Part No.	Description	No. Used
3	251-321	Bearing - Ball	2
4	251-332	Spacer - Inner	1
5	80-0040	Spacer	1

TORO PART NUMBER INDEX

Part No.	Description	Page Ref.		Part No.	Description	Page Ref.	
		No.	Qty			No.	Qty
3-6781	Washer	3	35 4	68-7050	Shaft	5	19 1
3-8514	Washer	1	16 3	68-7060	Gear	5	18 1
12-1509	Pneumatic Tire & Wheel	4	* 2	68-7070	Ring - Retaining	5	7 2
14-5689	Cover - Deck R.H.	3	5 1	68-7080	Gear	5	10 1
14-6879	Cover - Deck L.H.	3	21 1	68-7280	Decal - Blade Bolt Torque	1	23 1
14-7409	Deck Assy.	1	5 1	68-8560	Bracket - Gear Box	4	58 2
21-0890	V-Belt	1	14 3	68-9890	Cover - Gear Box Front	4	56 1
21-3770	Strap - Lift	3	16 1	70-2560	Decal - Lube	3	9 1
23-1640	Bushing - TaperLock	4	53 1	72-9370	Shim (.020 in.)	5	11 4
23-2410	Blade - High Sail (Opt.)	2	* 3	75-9680	Fork - Caster, Rear	3	36 2
26-1190	Plate - Reinforcement	4	59 2	76-1880	10" Segmented Tire Assy.	6	1 1
26-1400	Pulley - Deck	3	13 1	80-0040	Spacer	6	5 1
26-1430	Caster Arm	3	34 1	83-4740	Bearing - Roller	4	48 2
26-1490	Caster Arm R.H.	3	1 1	84-2020	Outer Spindle Housing	2	34 2
26-1530	Fork - Caster, Front	4	52 2	84-2060	Pulley L.H.	1	17 1
26-1760	Pulley	1	4 2	84-2070	Spindle - Outer	1	32 2
26-1820	Screw - Cap Hex. Hd.	1	29 3	84-2080	Center Spindle Housing	2	51 1
26-1840	Idler Pulley	1	2 3	84-2090	Spacer R.H. Spindle	2	46 1
26-1850	Stud - Idler	1	12 1	84-5370	Spindle Center	2	47 1
26-1860	Spacer - Idler Pulley	1	7 2	92-1655	Wheel - Caster - Front	4	50 2
26-1870	Idler Mount L.H.	1	10 1	92-7847	Decal - Warning	2	52 1
26-1880	Spacer - Idler Mount	2	36 1	251-321	Bearing - Ball	6	3 2
26-1990	Washer - Belleville	1	30 3	251-332	Spacer - Inner	6	4 1
27-4570	Knob	3	25 4	253-138	Seal - Oil	1	18 6
28-9290	Bushing - Special	3	32 8	253-154	Seal - Oil	2	49 3
29-5530	Blade	1	31 3	254-94	Cone - Gear	5	12 1
36-1740	Roller - Deck	2	40 2	285-17	Plug	1	28 4
39-3330	Bar - Caster Clamp	3	28 2	302-5	Fitting - Graese	2	48 3
39-3340	Bracket - Clamp	3	10 1	302-5	Fitting - Grease	6	2 1
39-7450	Bracket - Clamp	3	27 1	302-5	Fitting - Grease	3	33 4
43-8480	Decal - Danger	1	25 2	302-11	Fitting - Grease	3	41 2
49-8320	Bearing & Spacer Set	1	19 3	302-40	Fitting - Grease	4	49 2
51-1470	Deflector	1	26 1	302-52	Fitting - Grease	2	50 1
51-1530	Hinge Bracket	1	21 2	322-4	Screw - Cap. Hex Hd.	2	45 2
51-1550	Spring	1	27 2	323-4	Screw - Cap Hex Hd.	3	4 4
57-0280	Decal - 72"	2	44 1	323-12	Screw - Cap Hex. Hd.	2	37 1
62-3310	Screw - Cap	5	15 8	324-12	Screw - Cap Hex Hd.	3	2 4
62-3340	Cup - Bearing	5	14 2	325-14	Screw - Cap Hex Hd.	3	29 4
62-3360	Cup - Bearing	5	3 2	325-17	Screw - Cap Hex. Hd.	2	35 2
62-3370	Cone - Bearing	5	9 2	325-18	Screw - Cap Hex Hd.	3	37 2
62-3380	Key	5	8 2	325-22	Screw - Cap Hex Hd.	3	47 2
62-3400	Seal	5	13 2	3231-26	Bolt - Carriage	4	55 4
62-3410	Cap	5	16 2	3231-27	Bolt - Carriage	1	9 6
62-3420	Gasket (.015 in.)	5	4 A/R	3231-27	Bolt - Carriage	3	19 2
62-3430	Gasket (.005 in.)	5	5 A/R	3231-29	Bolt - Carriage	1	6 2
62-3440	Gasket (.003 in.)	5	6 A/R	3233-2	Bolt - Carriage	3	46 12
62-3490	Plug - Pipe (Solid)	5	2 4	3234-1	Screw - Hex. Hd. Flange	1	13 24
62-4340	Spanner - Front	4	51 2	3234-11	Screw - Hex. Hd. Flange	1	1 4
62-4480	Rod - Roller	2	43 2	3247-4	Screw - Set	4	54 2
62-5580	Bushing	3	39 8	3253-21	Washer - Lock	3	6 4
63-0070	Spacer - 1/2	3	31 24	3256-6	Washer - Flat	3	38 8
63-1770	Spanner - Rear	3	40 2	3256-24	Washer	2	33 A/R
63-1970	Shroud - Universal	3	15 1	3257-5	Key - Woodruff	3	12 1
63-8400	Wheel - Caster Rear	3	42 2	3269-5	Rivet - Pop	3	45 4
63-8410	Washer	3	8 4	3290-357	Nut - Flange	1	11 6
63-8580	Bearing - Roller	3	43 2	3290-357	Nut - Flange	3	17 2
63-9750	Mount - Isolation	4	57 4	3290-384	Pin - Lynch	3	30 4
66-1260	Bracket - Knob	3	44 2	3290-469	Nut - Grip	3	23 4
66-1340	Decal - Danger	1	20 2	3296-49	Nut	1	15 3
66-6310	Washer - Cup	3	14 2	3296-59	Nut - Lock	3	24 4
66-6380	Decal - Deflector Missing	1	24 1	32104-82	Screw - Cap Self-Tapping	3	18 2
66-6480	Washer - Flat	3	3 4	32128-21	Nut - Flange	3	7 4
67-5360	Decal - Danger	1	3 2	32128-21	Nut - Flange	1	8 33
68-6710	Roller - Deck	2	42 1	32128-23	Nut - Lock Flange	1	22 2
68-6810	Gear Case Assembly	3	11 1	32128-23	Nut - Lock Flange	3	26 8
68-6840	Shaft - Roller	2	41 1	32128-25	Nut - Lock Flange	2	39 2
68-7030	Housing	5	1 1	32128-42	Nut - Flange	3	20 4
68-7040	Shaft	5	17 1	32128-49	Nut - Flange	3	22 12

PRODUCT CHANGES

In an effort to make improvements available to TORO owners as quickly as possible, minor changes are incorporated into Toro's products from time to time that do not become immediately shown in the Parts Catalog. If such a change has been made in your unit, which is not reflected in your manual, see your TORO Distributor or his Authorized TORO Service Dealer for information and part numbers.

COUNTRIES OTHER THAN THE UNITED STATES OR CANADA

Customers who have purchased TORO products exported from the United States or Canada should contact their Toro Distributor (Dealer) to obtain guarantee policies for your country, province or state. If for any reason you

are dissatisfied with your Distributor's service or have difficulty obtaining guarantee information, contact the TORO importer. If all other remedies fail, you may contact us at The Toro Company.

MAINTENANCE RECORD

Date								