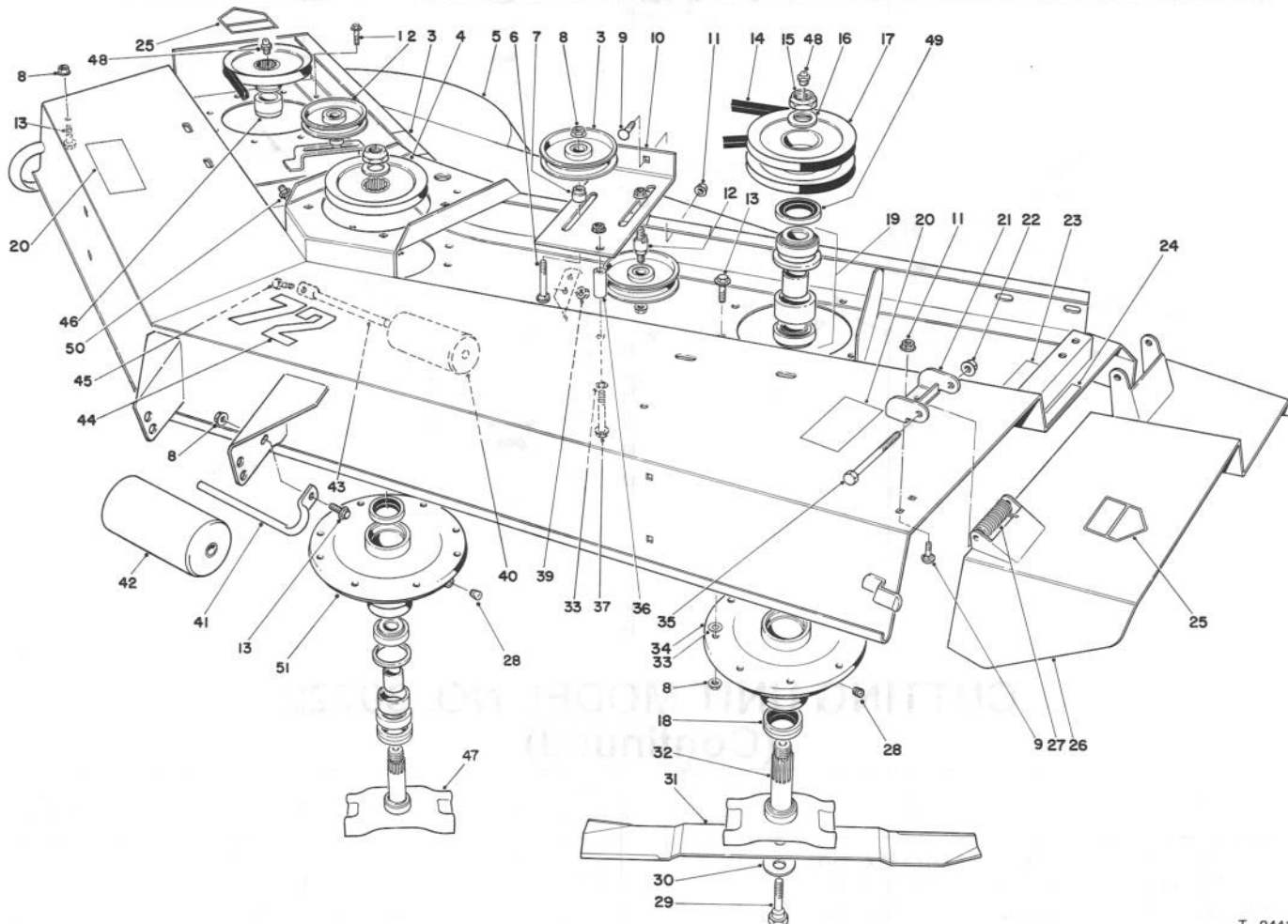




MODEL NO. 30722-20611 & UP

PARTS CATALOG

72" SIDE DISCHARGE DECK
300 Series GROUNDMASTER®



T-0441A

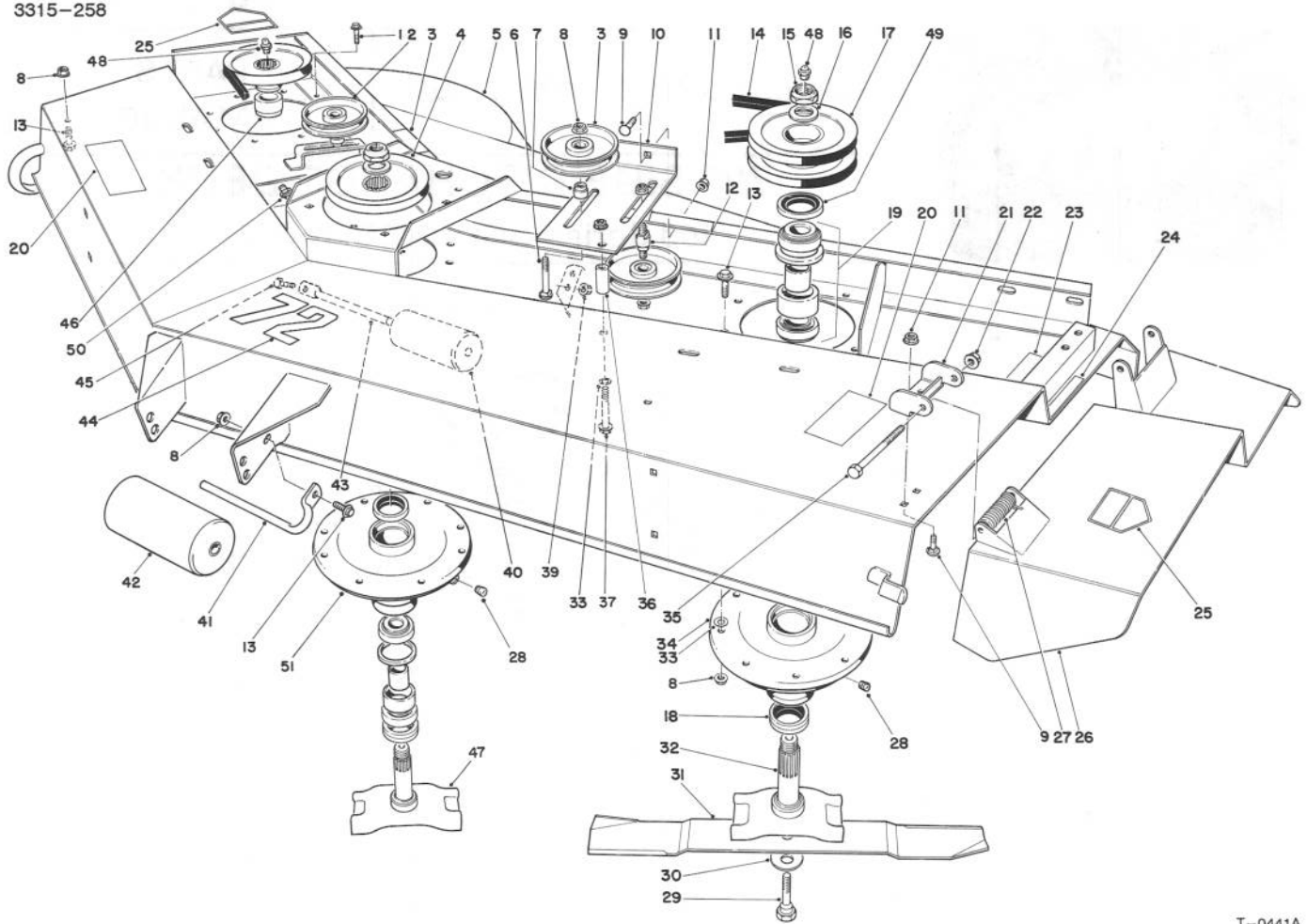
CUTTING DECK ASSEMBLY

Ref. No.	Part No.	Description	No. Used
1	3234-11	Screw - Hex. Hd. Flange	4
2	26-1840	Idler Pulley	3
3	67-5360	Decal - Danger	2
4	26-1760	Pulley	2
5	14-7409	Deck Assy. (Incl. Ref. #23)	1
6	3231-29	Bolt - Carriage	2
7	26-1860	Spacer - Idler Pulley	2
8	32128-21	Nut - Flange	33
9	3231-27	Bolt - Carriage	6
10	26-1870	Idler Mount L.H.	1
11	3290-357	Nut - Flange	6
12	26-1850	Stud - Idler	1
13	3234-1	Screw - Hex. Hd. Flange	24
14	21-0890	V-Belt	3
15	3296-49	Nut	3
16	3-8514	Washer	3
17	84-2060	Pulley L.H.	1

Ref. No.	Part No.	Description	No. Used
18	253-138	Seal - Oil	6
19	49-8320	Bearing & Spacer Set	3
20	66-1340	Decal - Danger	2
21	51-1530	Hinge Bracket	2
22	32128-23	Nut - Lock Flange	2
23	68-7280	Decal - Blade Bolt Torque	1
24	66-6380	Decal - Deflector Missing	1
25	43-8480	Decal - Danger	2
26	51-1470	Deflector	1
27	51-1550	Spring	2
28	285-17	Plug	4
29	26-1820	Screw - Cap Hex. Hd.	3
30	26-1990	Washer - Belleville	3
31	29-5530	Blade	3
32	84-2070	Spindle - Outer	2
33	3256-24	Washer	A/R
34	84-2020	Outer Spindle Housing	2

TPS

3315-258



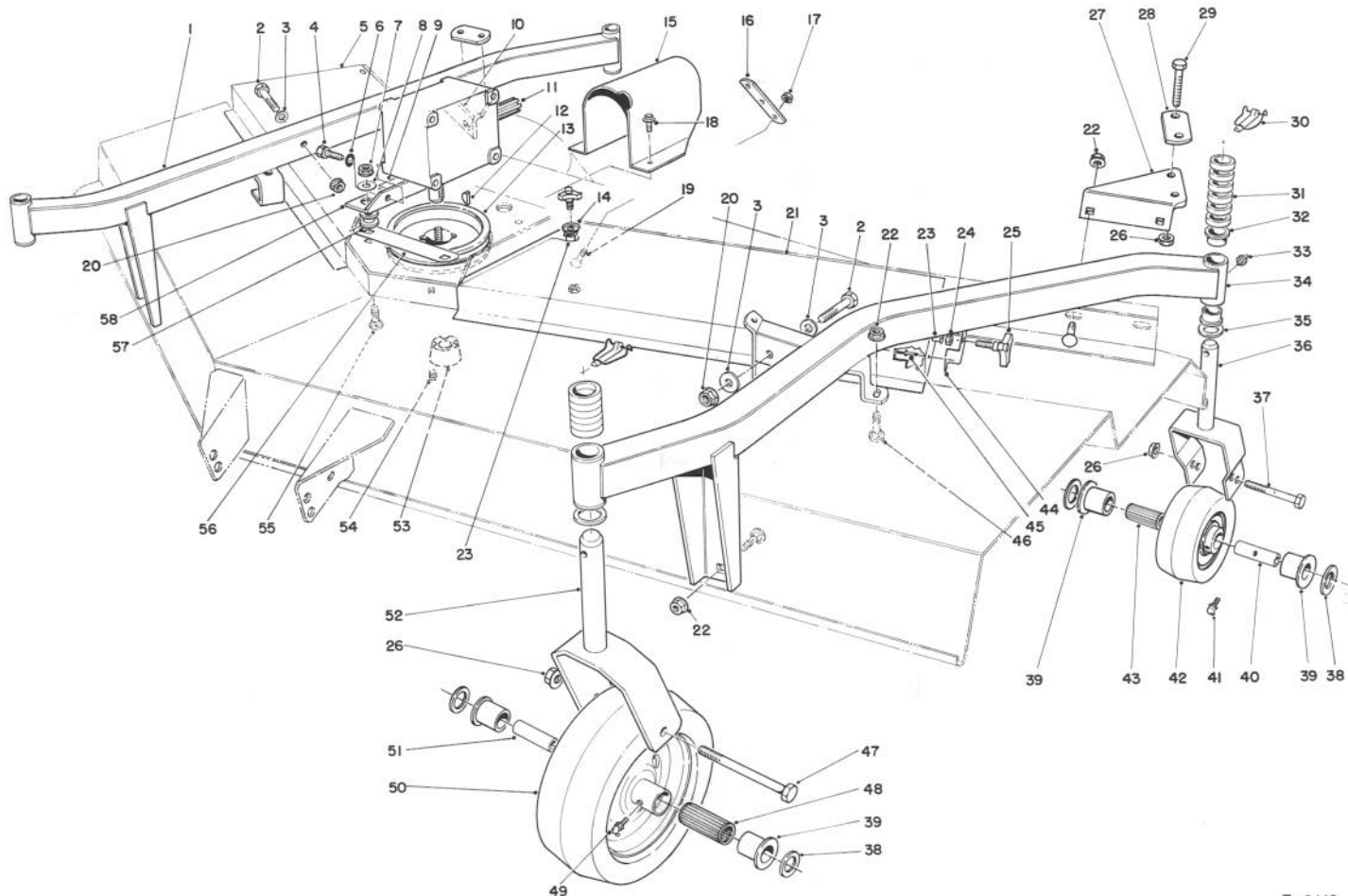
T-0441A

CUTTING UNIT MODEL NO. 30722 (Continued)

Ref. No.	Part No.	Description	No. Used
35	325-17	Screw - Cap Hex. Hd.	2
36	26-1880	Spacer - Idler Mount	1
37	323-12	Screw - Cap Hex. Hd.	1
39	32128-25	Nut - Lock Flange	2
40	36-1740	Roller - Deck	2
41	68-6840	Shaft - Roller	1
42	68-6710	Roller - Deck	1
43	62-4480	Rod - Roller	2
44	57-0280	Decal - 72"	1

Ref. No.	Part No.	Description	No. Used
45	322-4	Screw - Cap. Hex Hd.	2
46	84-2090	Spacer R.H. Spindle	1
47	84-5370	Spindle Center	1
48	302-5	Fitting - Grease	3
49	253-154	Seal - Oil	3
50	302-52	Fitting - Grease	1
51	84-2080	Center Spindle Housing	1
*	23-2410	Blade - High Sail (Opt.)	3

*Not Illustrated

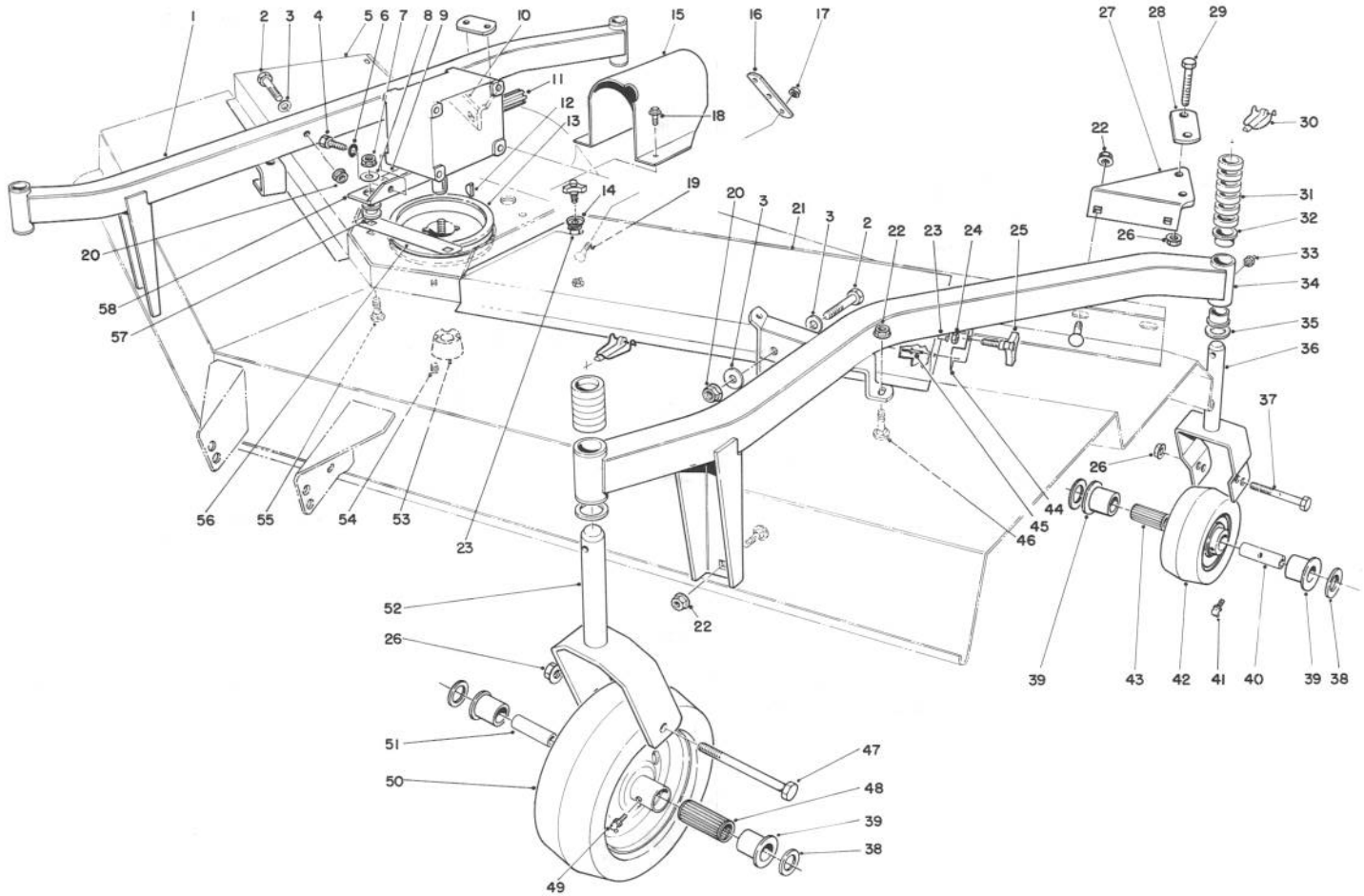


T-0442

CUTTING UNIT MODEL NO. 30722 (Continued)

Ref. No.	Part No.	Description	No. Used	Ref. No.	Part No.	Description	No. Used
1	26-1490	Caster Arm R.H. (Incl. Ref. #32)	1	22	32128-49	Nut - Flange	12
2	324-12	Screw - Cap Hex Hd.	4	†23	3290-469	Nut - Grip	4
3	66-6480	Washer - Flat	4	24	3296-59	Nut - Lock	4
4	323-4	Screw - Cap Hex Hd.	4	25	27-4570	Knob	4
5	14-5869	Cover - Deck R.H. (Incl. Ref. #24, 25, 44-45)	1	26	32128-23	Nut - Lock Flange	8
6	3253-21	Washer - Lock	4	27	39-7450	Bracket - Clamp	1
7	32128-21	Nut - Flange	4	28	39-3330	Bar - Caster Clamp	2
8	63-8410	Washer	4	29	325-14	Screw - Cap Hex Hd.	4
9	70-2560	Decal - Lube	1	30	3290-384	Pin - Lynch	4
10	39-3340	Bracket - Clamp	1	31	63-0070	Spacer - 1/2	24
11	68-6810	Gear Case Assembly	1	32	28-9290	Bushing - Special	8
12	3257-5	Key - Woodruff	1	33	302-5	Fitting - Grease	4
13	26-1400	Pulley - Deck	1	34	26-1430	Caster Arm (Incl. Ref. #32)	1
14	66-6310	Washer - Cup	2	35	3-6781	Washer	4
15	63-1970	Shroud - Universal	1	36	75-9680	Fork - Caster, Rear	2
16	21-3770	Strap - Lift	1	37	325-18	Screw - Cap Hex Hd.	2
17	3290-357	Nut - Flange	4	38	3256-6	Washer - Flat	8
18	32104-82	Screw - Cap Self-Tapping	2	39	62-5580	Bushing	8
19	3231-27	Bolt - Carriage	2	40	63-1770	Spanner - Rear	2
20	32128-42	Nut - Flange	4	41	302-11	Fitting - Grease	2
21	14-5879	Cover - Deck L.H. (Incl. Ref. #24, 25, 44-45)	1	42	63-8400	Wheel - Caster Rear (Incl. Ref. #39, 41 & 43)	2
				43	63-8580	Bearing - Roller	2

†Special tool required to install.



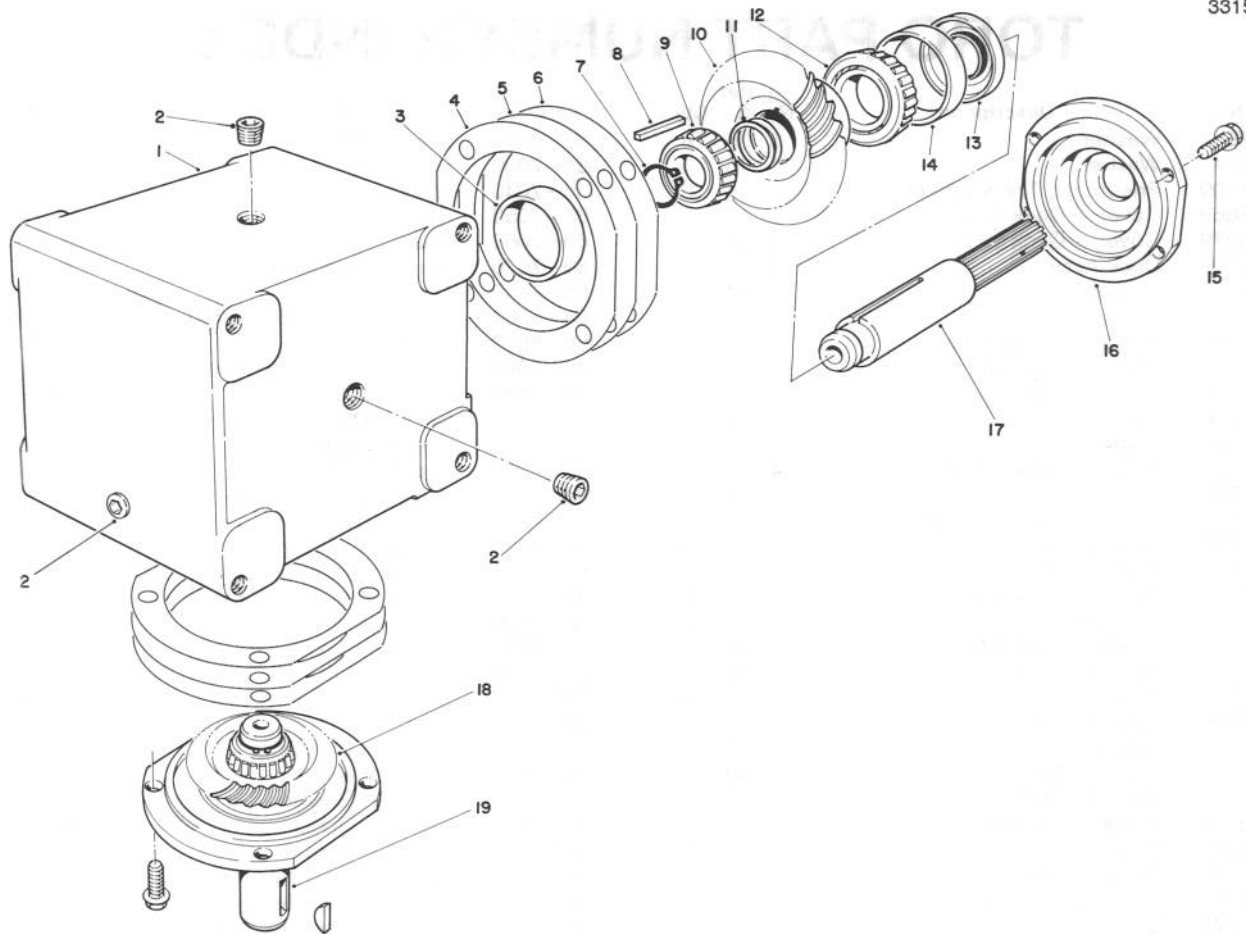
T-0442

CUTTING UNIT MODEL NO. 30722 (Continued)

Ref. No.	Part No.	Description	No. Used
44	66-1260	Bracket - Knob	2
45	3269-5	Rivet - Pop	4
46	3233-2	Bolt - Carriage	12
47	325-22	Screw - Cap Hex Hd.	2
48	83-4740	Bearing - Roller	2
49	302-40	Fitting - Grease	2
50	85-6310	Wheel - Caster - Front (Inc. Ref. #39, 48 & 49)	2
51	62-4340	Spanner - Front	2
52	26-1530	Fork - Caster, Front	2
53	23-1640	Bushing - TaperLock	

Ref. No.	Part No.	Description	No. Used
		(Incl. Ref. #54)	1
54	3247-4	Screw - Set	2
55	3231-26	Bolt - Carriage	4
56	68-9890	Cover - Gear Box Front	1
57	63-9750	Mount - Isolation	4
58	68-8560	Bracket - Gear Box	2
*	12-1509	Pneumatic Tire & Wheel (Optional)	2

*Not Illustrated



T-0977

GEAR BOX ASSEMBLY NO. 68-6810

Ref. No.	Part No.	Description	No. Used	Ref. No.	Part No.	Description	No. Used
1	68-7030	Housing	1	11	72-9370	Shim (.020 in.)	4
2	62-3490	Plug - Pipe (Solid)	4	12	62-3330	Cone - Gear	1
3	62-3360	Cup - Bearing	2	13	62-3400	Seal	2
4	62-3420	Gasket (.015 in.)	A/R	14	62-3340	Cup - Bearing	2
5	62-3430	Gasket (.005 in.)	A/R	15	62-3310	Screw - Cap Sems	8
6	62-3440	Gasket (.003 in.)	A/R	16	62-3410	Cap	2
7	68-7070	Ring - Retaining	2	17	68-7040	Shaft	1
8	62-3380	Key	2	18	68-7060	Gear	1
9	62-3370	Cone - Bearing	2	19	68-7050	Shaft	1
10	68-7080	Gear	1				

TORO PART NUMBER INDEX

3315-258

Part No.	Description	Pg. No.	Ref. No.	Qty.	Part No.	Description	Pg. No.	Ref. No.	Qty.
3-6781	Washer	3	35	4	68-6840	Shaft - Roller	2	41	1
3-8514	Washer	1	16	3	68-7030	Housing	5	1	1
12-1509	Pneumatic Tire & Wheel	4	*	2	68-7040	Shaft	5	17	1
14-5869	Cover - Deck R.H.	3	5	1	68-7050	Shaft	5	19	1
14-5879	Cover - Deck L.H.	3	21	1	68-7060	Gear	5	18	1
14-7409	Deck Assy.	1	5	1	68-7070	Ring - Retaining	5	7	2
21-0890	V-Belt	1	14	3	68-7080	Gear	5	10	1
21-3770	Strap - Lift	3	16	1	68-7280	Decal - Blade Bolt Torque	1	23	1
23-1640	Bushing - TaperLock	4	53	1	68-8560	Bracket - Gear Box	4	58	2
23-2410	Blade - High Sail (Opt.)	2	*	3	68-9890	Cover - Gear Box Front	4	56	1
26-1400	Pulley - Deck	3	13	1	70-2560	Decal - Lube	3	9	1
26-1430	Caster Arm	3	34	1	72-9370	Shim (.020 in.)	5	11	4
26-1490	Caster Arm R.H.	3	1	1	75-9680	Fork - Caster, Rear	3	36	2
26-1530	Fork - Caster, Front	4	52	2	83-4740	Bearing - Roller	4	48	2
26-1760	Pulley	1	4	2	84-2020	Outer Spindle Housing	1	34	2
26-1820	Screw - Cap Hex. Hd.	1	29	3	84-2060	Pulley L.H.	1	17	1
26-1840	Idler Pulley	1	2	3	84-2070	Spindle - Outer	1	32	2
26-1850	Stud - Idler	1	12	1	84-2080	Center Spindle Housing	2	51	1
26-1860	Spacer - Idler Pulley	1	7	2	84-2090	Spacer R.H. Spindle	2	46	1
26-1870	Idler Mount L.H.	1	10	1	84-5370	Spindle Center	2	47	1
26-1880	Spacer - Idler Mount	2	36	1	85-6310	Wheel - Caster - Front	4	50	2
26-1990	Washer - Belleville	1	30	3	253-138	Seal - Oil	1	18	6
27-4570	Knob	3	25	4	253-154	Seal - Oil	2	49	3
28-9290	Bushing - Special	3	32	8	285-17	Plug	1	28	4
29-5530	Blade	1	31	3	302-5	Fitting - Grease	2	48	3
36-1740	Roller - Deck	2	40	2	302-5	Fitting - Grease	3	33	4
39-3330	Bar - Caster Clamp	3	28	2	302-11	Fitting - Grease	3	41	2
39-3340	Bracket - Clamp	3	10	1	302-40	Fitting - Grease	4	49	2
39-7450	Bracket - Clamp	3	27	1	302-52	Fitting - Grease	2	50	1
43-8480	Decal - Danger	1	25	2	322-4	Screw - Cap. Hex Hd.	2	45	2
49-8320	Bearing & Spacer Set	1	19	3	323-4	Screw - Cap Hex Hd.	3	4	4
51-1470	Deflector	1	26	1	323-12	Screw - Cap Hex. Hd.	2	37	1
51-1530	Hinge Bracket	1	21	2	324-12	Screw - Cap Hex Hd.	3	2	4
51-1550	Spring	1	27	2	325-14	Screw - Cap Hex Hd.	3	29	4
57-0280	Decal - 72	2	44	1	325-17	Screw - Cap Hex. Hd.	2	35	2
62-3310	Screw - Cap Sems	5	15	8	325-18	Screw - Cap Hex Hd.	3	37	2
62-3330	Cone - Gear	5	12	1	325-22	Screw - Cap Hex Hd.	4	47	2
62-3340	Cup - Bearing	5	14	2	3231-26	Bolt - Carriage	4	55	4
62-3360	Cup - Bearing	5	3	2	3231-27	Bolt - Carriage	1	9	6
62-3370	Cone - Bearing	5	9	2	3231-27	Bolt - Carriage	3	19	2
62-3380	Key	5	8	2	3231-29	Bolt - Carriage	1	6	2
62-3400	Seal	5	13	2	3233-2	Bolt	4	46	12
62-3410	Cap	5	16	2	3234-1	Screw - Hex. Hd. Flange	1	13	24
62-3420	Gasket (.015 in.)	5	4	A/R	3234-11	Screw - Hex. Hd. Flange	1	1	4
62-3430	Gasket (.005 in.)	5	5	A/R	3247-4	Screw - Set	4	54	2
62-3440	Gasket (.003 in.)	5	6	A/R	3253-21	Washer - Lock	3	6	4
62-3490	Plug - Pipe (Solid)	5	2	4	3256-6	Washer - Flat	3	38	8
62-4340	Spanner - Front	4	51	2	3256-24	Washer	1	33	A/R
62-4480	Rod - Roller	2	43	2	3257-5	Key - Woodruff	3	12	1
62-5580	Bushing	3	39	8	3269-5	Rivet - Pop	4	45	4
63-0070	Spacer - 1/2	3	31	24	3290-357	Nut - Flange	1	11	6
63-1770	Spanner - Rear	3	40	2	3290-357	Nut - Flange	3	17	4
63-1970	Shroud - Universal	3	15	1	3290-384	Pin - Lynch	3	30	4
63-8400	Wheel - Caster Rear	3	42	2	3290-469	Nut - Grip	3	23	4
63-8410	Washer	3	8	4	3296-49	Nut	1	15	3
63-8580	Bearing - Roller	3	43	2	3296-59	Nut - Lock	3	24	4
63-9750	Mount - Isolation	4	57	4	32104-82	Screw - Cap Self-Tapping	3	18	2
66-1260	Bracket - Knob	4	44	2	32128-21	Nut - Flange	3	7	4
66-1340	Decal - Danger	1	20	2	32128-21	Nut - Flange	1	8	33
66-6310	Washer - Cup	3	14	2	32128-23	Nut - Lock Flange	1	22	2
66-6380	Decal - Deflector Missing	1	24	1	32128-23	Nut - Lock Flange	3	26	8
66-6480	Washer - Flat	3	3	4	32128-25	Nut - Lock Flange	2	39	2
67-5360	Decal - Danger	1	3	2	32128-42	Nut - Flange	3	20	4
68-6710	Roller - Deck	2	42	1	32128-49	Nut - Flange	3	22	12
68-6810	Gear Case Assembly	3	11	1					

MAINTENANCE RECORD

Date									

MAINTENANCE RECORD

Date								