



Trencher Head Compact Utility Loaders

Model No. 22470 - 250000001 and up.

Model No. 22471 - 250000001 and up.

Parts Catalog

Ordering Replacement Parts

To order replacement parts, please supply the part number, the quantity, and the description of each part desired.

Understanding Reference Numbers

Each identified part in an illustration has a reference number. The reference number for a part also appears in the parts list, along with other information about the part.

This catalog uses two special reference number formats, one to indicate parts in a service assembly and another to indicate the quantity of a given part in an illustration.

Service Assembly Reference Numbers

Parts in service assemblies have reference numbers in the form a:b. The a represents the reference number of the entire service assembly and the b represents a sequential number unique to each part within the service assembly.

For example, a wheel assembly might be identified by reference number 6, the tire by 6:1, the valve by 6:2, and the wheel by 6:3. When you order the assembly identified by reference number 6, you receive all parts identified by reference numbers 6:1, 6:2, and 6:3. However, you may also order any part individually. Reference numbers of this type appear in illustrations and in part lists.

Reference Numbers Indicating Quantity

In an illustration, if a reference number indicates more than one part, the reference number has the form nX y. The n represents the quantity of the part, the X is the multiplication symbol, and the y represents the reference number.

For example, in an illustration, the reference number 2X 37 means that two of the parts identified by reference number 37 are indicated.

Contents

Description	Page	Description	Page
Trencher Assembly 3	High Speed Hydraulic Motor Assembly No. 104-5701 5
Boom Assembly No. 104-1949 4	High Torque Hydraulic Motor Assembly No. 107-9350 6
		Attachments and Accessories List 7

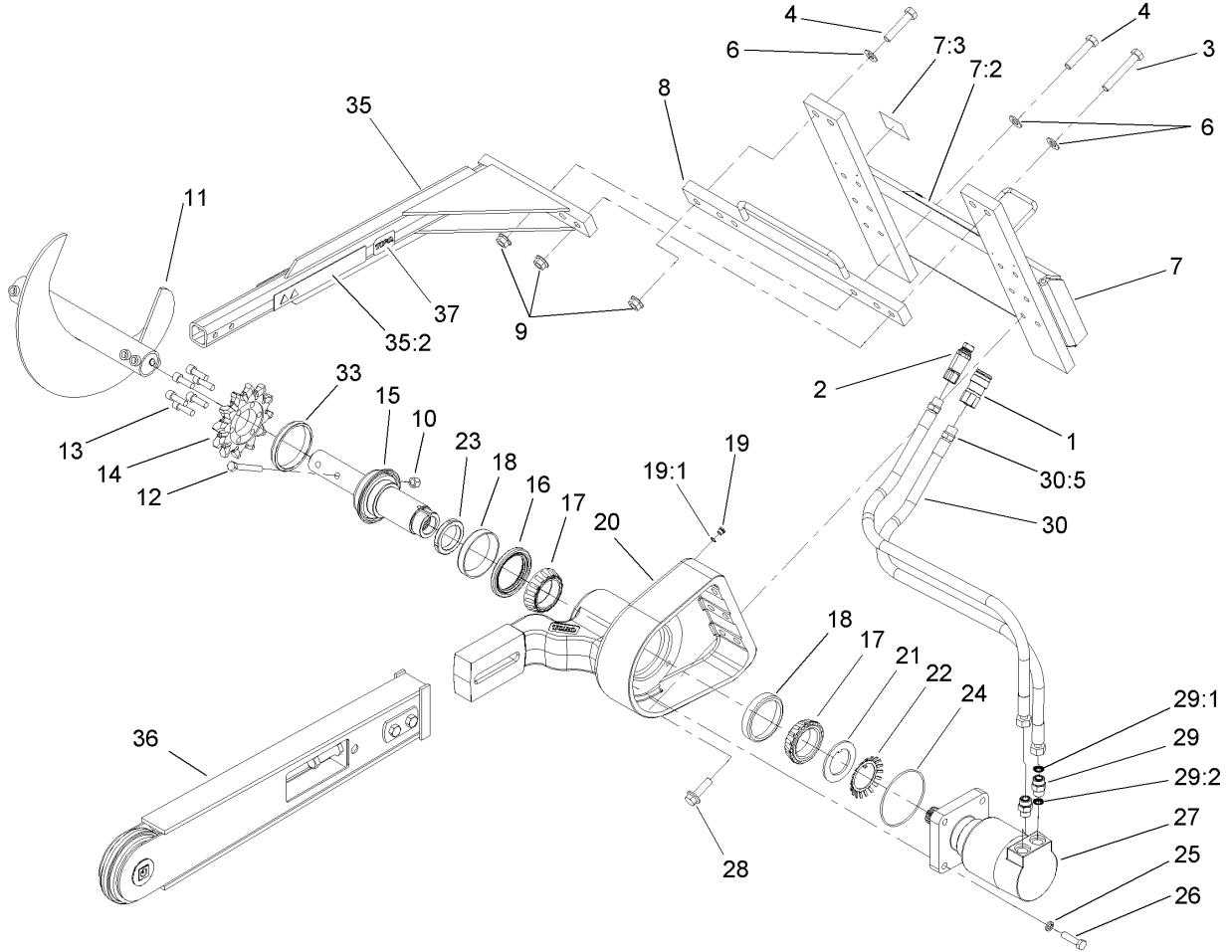
Part Description Abbreviations

Part descriptions in this catalog may include the following abbreviations.

AR. as required	HYD. hydraulic
ASM. assembly	LH. left hand
BBC. blade brake clutch	NI. nylon insert
CARR. carriage	NPTF. national pipe thread fine
DEG. degrees	PFH. phillips flat head
EXT. external	PPH. phillips pan head
FH. flat head	PPHTF. phillips pan head thread forming
GA. gauge	PRH. phillips round head
HD. heavy-duty	PTH. phillips truss head
HF. hex flange	PTO. power-take-off
HH. hex head	RH. right hand
HHF. hex head flange	ROPS. roll-over protection system
HHFTF. hex head flange thread forming	SFH. slotted fillister head
HJ. hex jam	SHH. slotted hex head
HLH. hex lag head	SHWH. slotted hex washer head
HOC. height-of-cut	SPH. slotted pan head
HSBH. hex socket button head	SQH. square head
HSFH. hex socket flat head	SRH. slotted round head
HS. hex socket head	STD. standard
HWH. hex washer head	TAP. self tapping
HWHTF. hex washer head thread forming	TTH. torx truss head

Footnotes

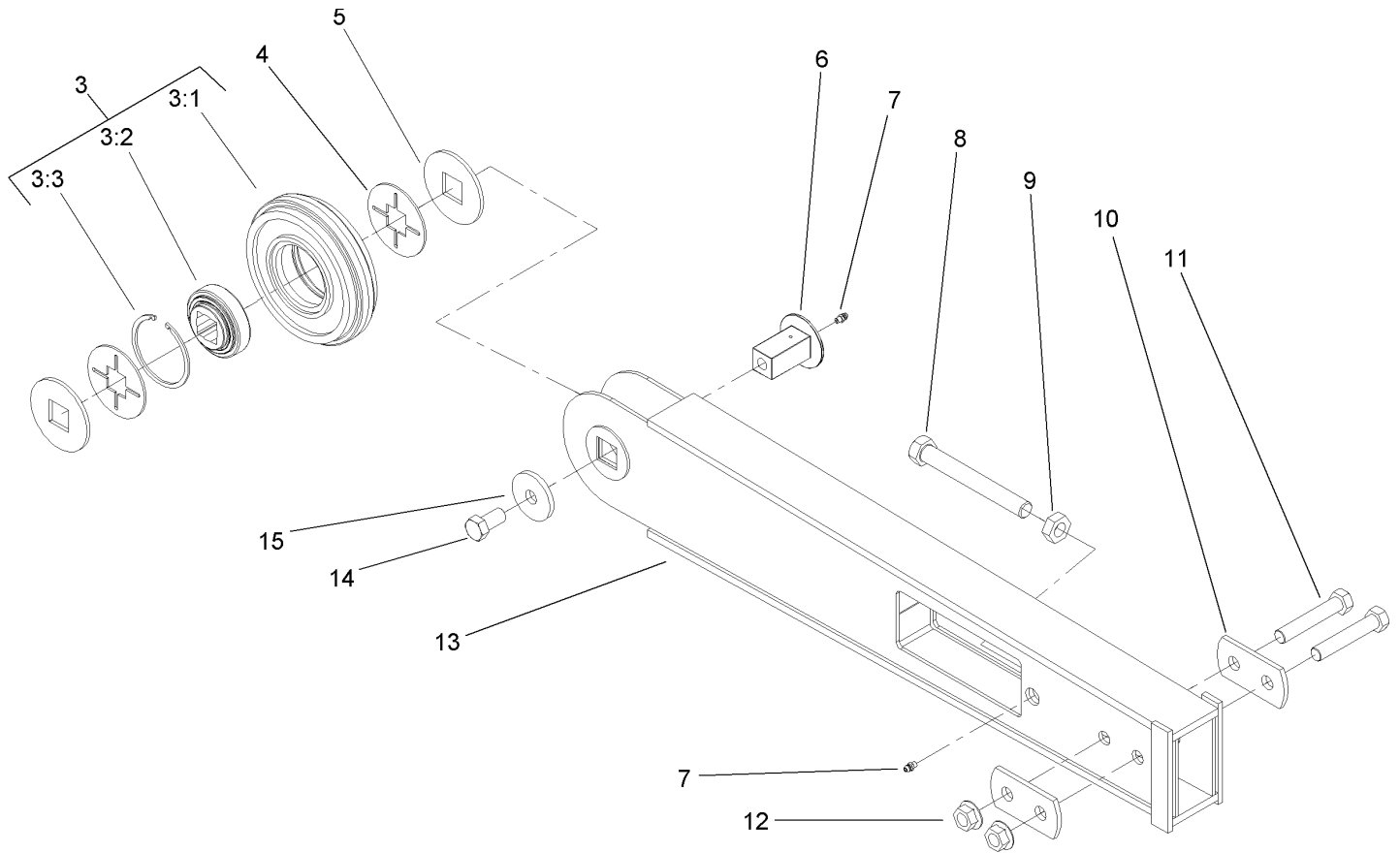
- ❶ Not illustrated



Trencher Assembly

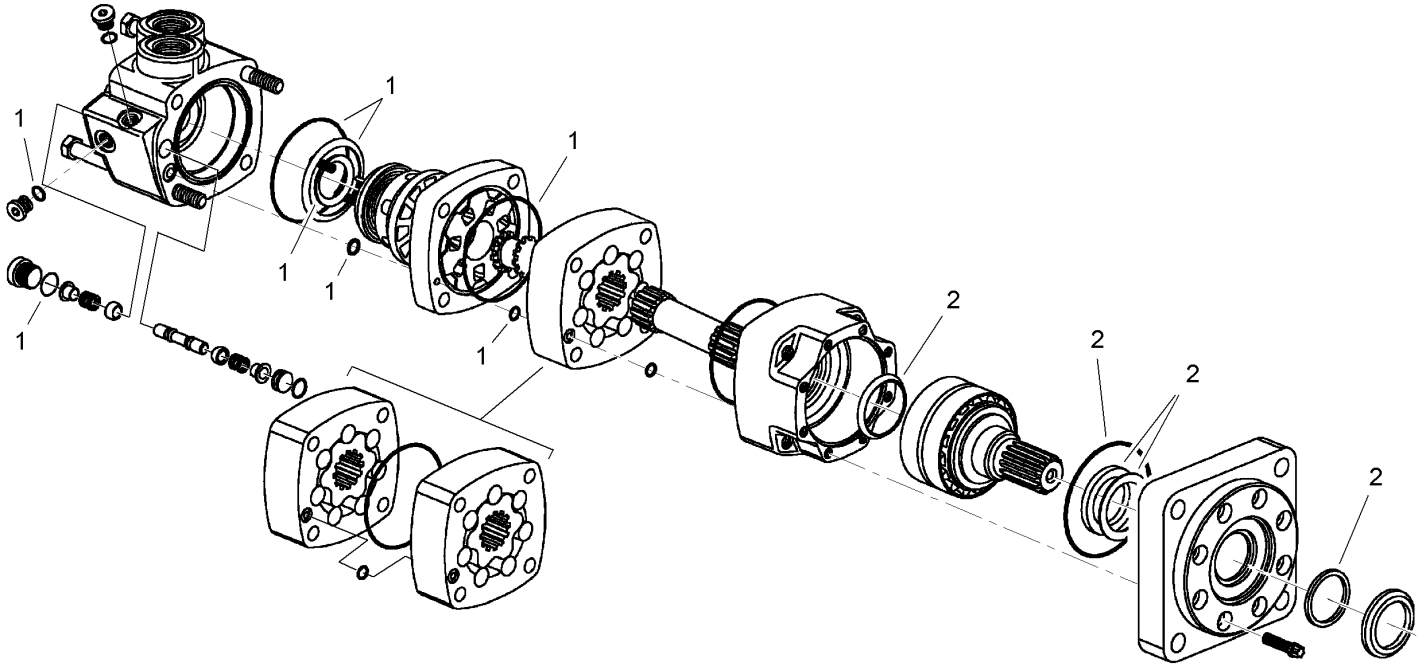
Ref	Part No.	Qty.	Description
1	104-6134	1	Coupler-Face, Flush
2	100-4701	1	Nipple-Connect, Pressure
2:1	100-6120	1	Seal Kit
3	104-5877	2	Screw-HH
4	104-5895	3	Screw-HH
6	3256-27	5	Washer-Flat
7	104-1938	1	Mount ASM
7:2	99-9952	1	Decal-Danger
7:3	99-9953	1	Decal-Danger
8	104-5894-03	1	Crossbar ASM
9	32128-50	5	Nut-Flange
10	3296-23	1	Nut-Lock, NI
11	104-5912-03	1	Auger ASM
12	325-35	1	Screw-HH
13	3274-4	6	Screw-HSH
14	104-1964	1	Sprocket-Trencher
15	104-1969	1	Shaft-Trencher
16	104-1967	1	Seal-Shaft
17	104-1966	2	Cone-Bearing
18	104-1965	2	Cup-Bearing
19	353-990	1	Plug
19:1	237-78	1	O-Ring
20	104-1931-03	1	Mount-Boom
21	104-1972	1	Washer-Tongued

Ref	Part No.	Qty.	Description
22	104-5915	1	Lockwasher-Bearing
23	104-1973	1	Locknut-Bearing
24	104-1920	1	O-Ring
25	3253-7	4	Washer-Lock
26	325-8	4	Screw-HH
27	104-5701	1	Motor-HYD, High Speed (Only On: 22471)
27	107-9350	1	Motor-HYD, High Torque (Only On: 22470)
28	104-5870	6	Screw
29	340-7	2	Adapter
29:1	237-65	1	O-Ring
29:2	237-80	1	O-Ring
30	104-1932	2	Hose ASM
30:5	237-80	1	O-Ring
33	104-5935	1	Spacer
35	104-1939	1	Safety Rail ASM
35:2	99-9952	2	Decal-Danger
36	104-1949	1	Boom ASM
37	98-3206	2	Decal



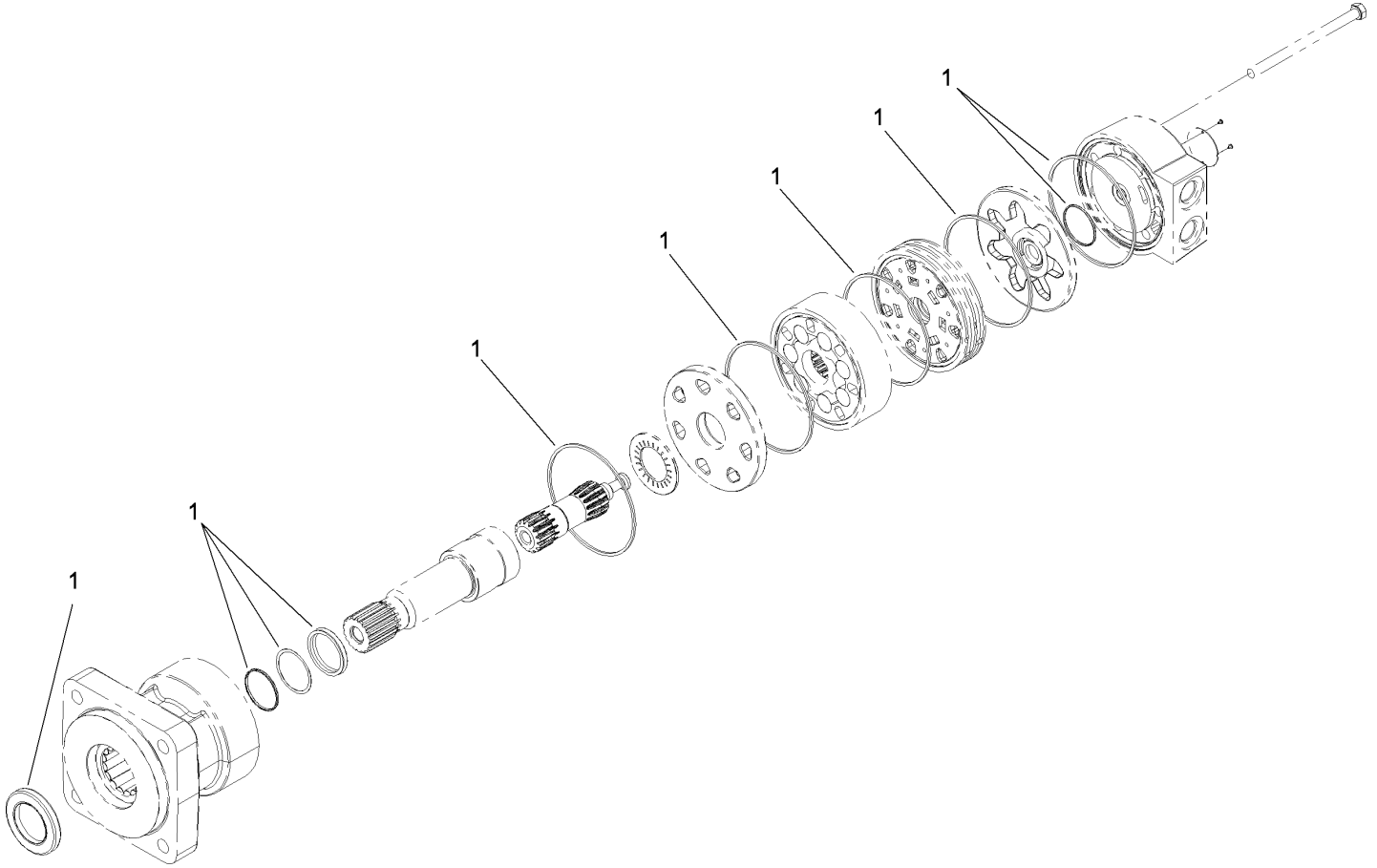
Boom Assembly No. 104-1949

Ref	Part No.	Qty.	Description
3	107-9325	1	Trencher Roller ASM
3:1	104-1951	1	Roller-Nose
3:2	104-1995	1	Bearing
3:3	104-1945	1	Ring-Retaining
4	104-1943	2	Spacer-Roller
5	104-1942	2	Cap-Roller
6	108-5549	1	Axle-Roller
7	302-5	2	Fitting-Grease
8	104-1941	1	Bolt-Adjustment
9	104-1944	1	Nut-Jam
10	104-1983-03	2	Plate-Support
11	327-14	2	Screw-HH
12	32128-50	2	Nut-Flange
13	104-1963-03	1	Boom ASM
14	327-3	1	Screw-HH
15	104-5901	1	Washer



High Speed Hydraulic Motor Assembly No. 104-5701

Ref	Part No.	Qty.	Description
1	107-9302	1	Rear Seal Kit
2	107-9303	1	Shaft Seal Kit



High Torque Hydraulic Motor Assembly No. 107-9350

Ref	Part No.	Qty.	Description				
1	107-9368	1	Seal Kit				

Attachments and Accessories

For 22470 - High-Torque Trencher Head, Compact Utility Loaders

Product Name	Model/Part
8-Inch x 3-Foot Soil Chain Kit	108-5539
12-Inch x 3-Foot Soil Chain Kit	108-5540
6-Inch x 3-Foot Rock Chain Kit	22463
Crumber Kit	22464
6-Inch x 3-Foot Trencher Chain Kit	22467

Attachments and Accessories

For 22471 - High-Speed Trencher Head, Compact Utility Loaders

Product Name	Model/Part
8-Inch x 3-Foot Soil Chain Kit	108-5539
12-Inch x 3-Foot Soil Chain Kit	108-5540
6-Inch x 3-Foot Rock Chain Kit	22463
Crumber Kit	22464
6-Inch x 3-Foot Trencher Chain Kit	22467

