



Jackshaft Assembly Kit

For Z Master® Riding Mowers with Daihatsu Engines

Model No. 114-0250

Installation Instructions

Note: Determine the left and right sides of the machine from the normal operating position.

Loose Parts

Use the chart below to verify that all parts have been shipped.

Step	Description	Qty.	Use
1	No parts required	–	Remove the existing pulleys.
2	Three stacked pulleys Top bracket (round hole on top) Bottom bracket (square hole on top) Plastic cap Nut, (5/8 inch) Spacer Flanged spacer Bolt, (3/8 x 1-1/4 inches) Bolt, (3/8 x 1 inch) Curved washer, (7/16 inch) Locknut, (3/8 inch) Carriage bolt, (5/8 x 4 inches)	1 1 1 1 1 1 1 4 5 5 1	Install the new pulleys.

Step

1

Removing the Existing Pulleys

No Parts Required

Procedure

1. Stop the engine, set the parking brake, wait for all moving parts to stop, and remove the ignition key.
2. Remove the two drive belts and the mower deck belt from the three stacked pulleys. Refer to the *Operator's Manual* for the correct procedure.
3. Remove the three stacked pulleys from the bearing housing (Figure 1).

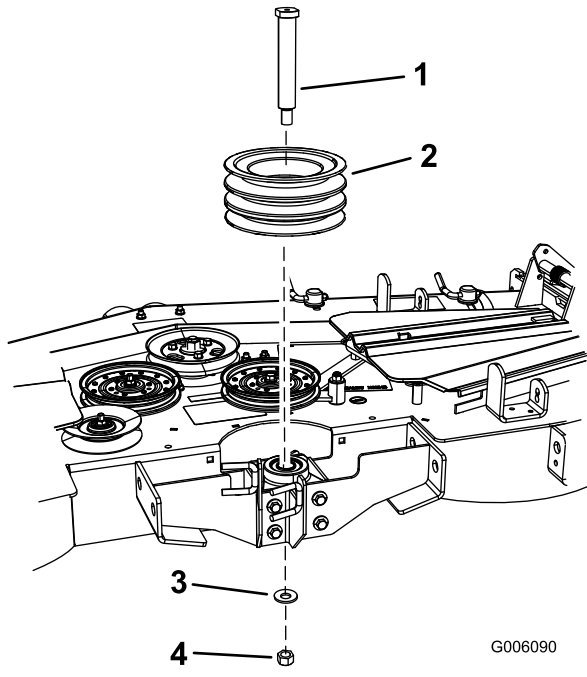


Figure 1

- 1. Bolt
- 2. Three stacked pulleys
- 3. Washer
- 4. Nut

G006090

4. Remove the bearing housing from the mower deck (Figure 2).

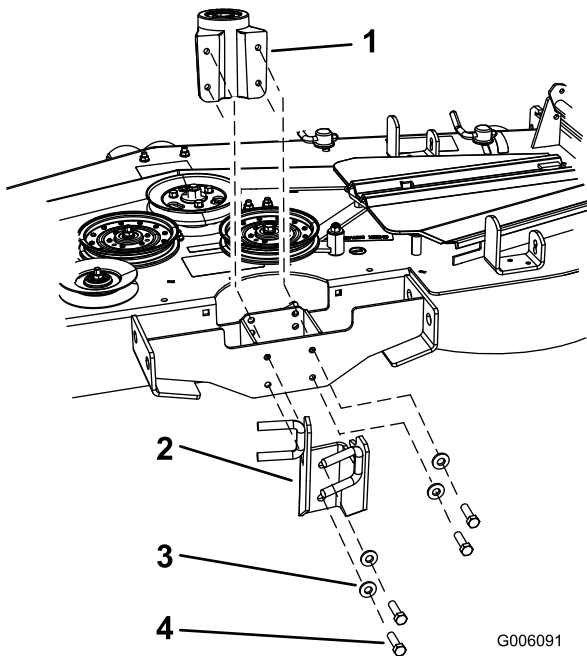


Figure 2

- 1. Bearing housing
- 2. Belt guide bracket
- 3. Washer
- 4. Bolt

G006091

Step **2**

Installing the New Pulleys

Parts needed for this step:

1	Three stacked pulleys
1	Top bracket (round hole on top)
1	Bottom bracket (square hole on top)
1	Plastic cap
1	Nut, (5/8 inch)
1	Spacer
1	Flanged spacer
1	Bolt, (3/8 x 1-1/4 inches)
4	Bolt, (3/8 x 1 inch)
5	Curved washer, (7/16 inch)
5	Locknut, (3/8 inch)
1	Carriage bolt, (5/8 x 4 inches)

Procedure

1. Install the bottom bracket (square hole on top) to the mower deck with 2 bolts (3/8 x 1 inch), 2 curved washers, and 2 locknuts (3/8 inch) (Figure 3).

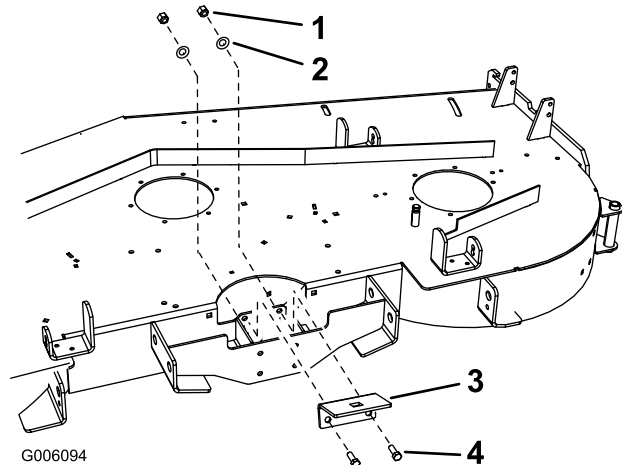
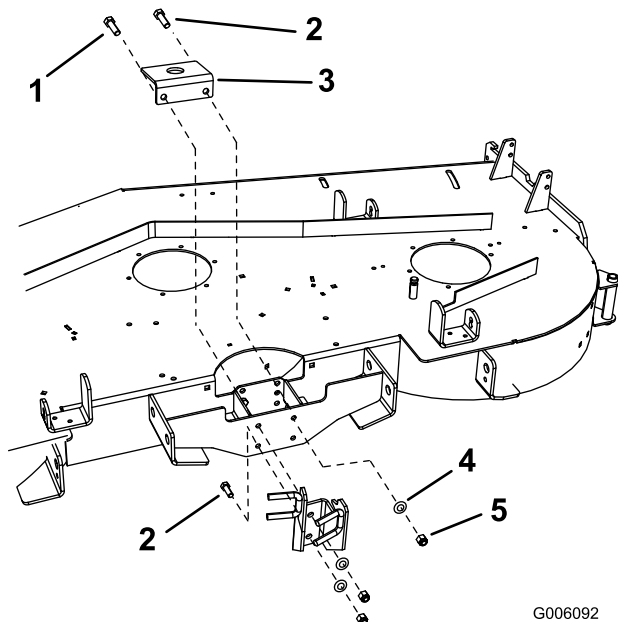


Figure 3

- 1. Locknuts (3/8 inch)
- 2. Bottom bracket (square hole on top)
- 3. Curved washer
- 4. Locknuts (3/8 inch)

2. Install the top bracket (round hole on top) and the belt guide bracket to the mower deck with a bolt (3/8 x 1-1/4 inches) in the top hole of the belt guide bracket, 2 bolts (3/8 x 1 inch), 3 curved washers, and 3 locknuts (3/8 inch) (Figure 4).

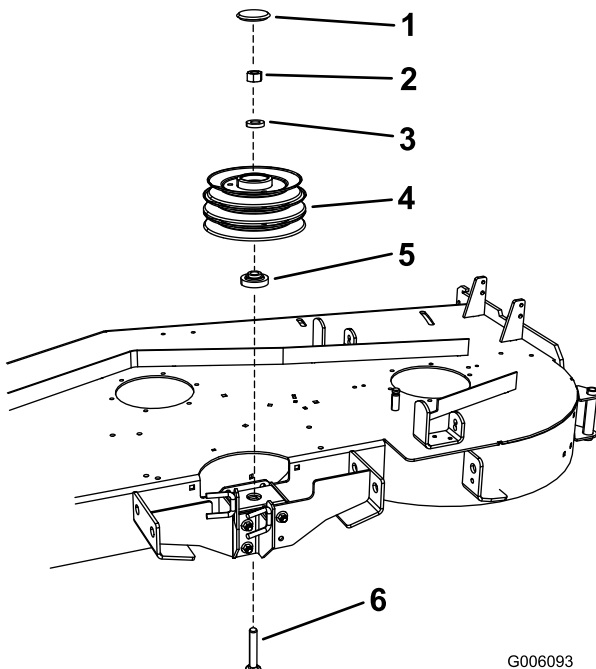


G006092

Figure 4

- | | |
|------------------------------------|------------------------|
| 1. Bolt (3/8 x 1-1/4 inches) | 4. Curved washer |
| 2. Bolt (3/8 x 1 inch) | 5. Locknuts (3/8 inch) |
| 3. Top bracket (round hole on top) | |

-
3. Install the three stacked pulleys to the brackets using a carriage bolt (5/8 x 4 inches) from the bottom, flanged spacer, spacer and a locknut (5/8 inch) (Figure 5).



G006093

Figure 5

- | | |
|--------------------|------------------------------------|
| 1. Plastic cap | 4. Three stacked pulleys |
| 2. Nut, (5/8 inch) | 5. Spacer with flange |
| 3. Spacer | 6. Carriage bolt, (5/8 x 4 inches) |

4. Torque the locknut (5/8 inch) to 100-150 ft-lb (136-203 N·m).
5. Install the plastic cap onto the pulleys (Figure 5).
6. Install the belts for the mower onto the 3 stacked pulleys. Refer to the *Operator's Manual* for the correct procedure.



Count on it.