

Deck Ring Kit

For 50in Mowers, Zero-Turn Riding Mowers

Model No. 114-1608

Installation Instructions

Installation

Loose Parts

Use the chart below to verify that all parts have been shipped.

| Step | Description | Qty. | Use |
|----------|--|------------------|---------------------------|
| 1 | No parts required | – | Prepare the machine. |
| 2 | Ring baffle, front Ring baffle, rear Bolt (1/4 x 3/4 inch) Locknut (1/4 inch) | 1 2 9 9 | Install the ring baffles. |

Step **1**

Preparing the Machine

No Parts Required

Procedure

1. Park the machine on a level surface and disengage the blade control (PTO).
2. Move the motion control levers to the brake position, stop the engine, remove the key, and wait for all moving parts to stop before leaving the operating position.
3. Allow the engine to cool before continuing with the installation.

Step **2**

Installing the Ring Baffles

Parts needed for this step:

| | |
|---|-----------------------|
| 1 | Ring baffle, front |
| 2 | Ring baffle, rear |
| 9 | Bolt (1/4 x 3/4 inch) |
| 9 | Locknut (1/4 inch) |

Procedure

1. Install the front end baffle to the mower as shown in Figure 1 and Figure 2. Use 3 bolts (1/4 x 3/4 inch) and 3 locknuts (1/4 inch) to secure the baffles to the mower.

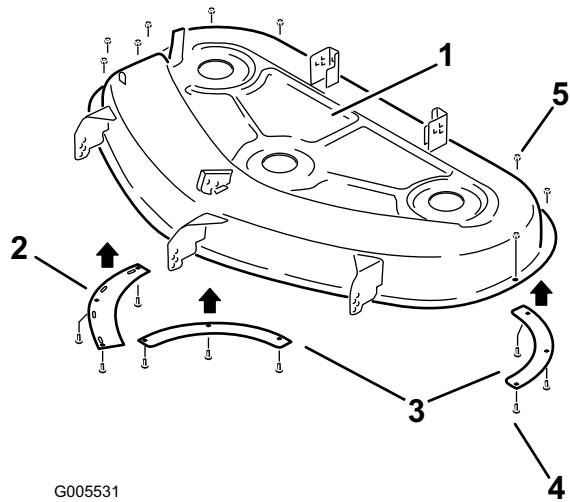


Figure 1

- | | |
|---------------------|--------------------------|
| 1. 50 mower deck | 4. Bolt (1/4 x 3/4 inch) |
| 2. Front end baffle | 5. Lock nut (1/4 inch) |
| 3. Rear ring baffle | |

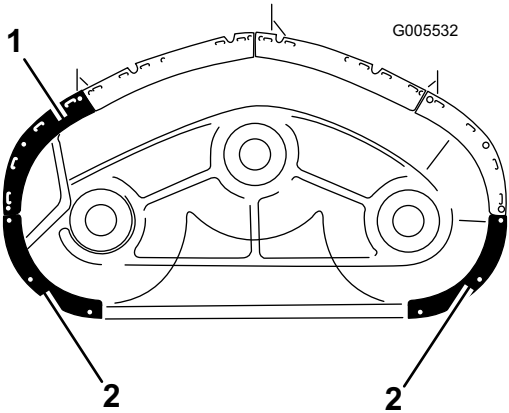


Figure 2

Bottom view

- | | |
|---------------------|---------------------|
| 1. Front end baffle | 2. Rear ring baffle |
|---------------------|---------------------|

2. Install the two rear ring baffles to the mower as shown in Figure 1 and Figure 2. Use 6 bolts (1/4 x 3/4 inch) and 6 locknuts (1/4 inch) to secure the baffles to the mower.
3. Torque all fasteners to 90-110 in-lb (10-12 N·m).