



Polar Trac Kit Groundsmaster® 7200 Series Mower

Model No. 30370 - 270000001 and up.

Parts Catalog

Ordering Replacement Parts

To order replacement parts, please supply the part number, the quantity, and the description of each part desired.

Understanding Reference Numbers

Each identified part in an illustration has a reference number. The reference number for a part also appears in the parts list, along with other information about the part.

This catalog uses two special reference number formats, one to indicate parts in a service assembly and another to indicate the quantity of a given part in an illustration.

Service Assembly Reference Numbers

Parts in service assemblies have reference numbers in the form a:b. The a represents the reference number of the entire service assembly and the b represents a sequential number unique to each part within the service assembly.

For example, a wheel assembly might be identified by reference number 6, the tire by 6:1, the valve by 6:2, and the wheel by 6:3. When you order the assembly identified by reference number 6, you receive all parts identified by reference numbers 6:1, 6:2, and 6:3. However, you may also order any part individually. Reference numbers of this type appear in illustrations and in part lists.

Reference Numbers Indicating Quantity

In an illustration, if a reference number indicates more than one part, the reference number has the form nX y. The n represents the quantity of the part, the X is the multiplication symbol, and the y represents the reference number.

For example, in an illustration, the reference number 2X 37 means that two of the parts identified by reference number 37 are indicated.

Contents

| Description | Page | Description | Page |
|-----------------------------------|---------|--|----------|
| Track Frame Assembly | 3 | Hydraulic Assembly | 7 |
| Bushing and Hub Assembly | 4 | Hydraulic Cylinder Assembly No. 108-5170 | 8 |
| Drive Track Assembly No. 108-5164 | 5 | Hydraulic Valve Assembly No. 110-3588 | 9 |
| Foot Control Assembly | 6 | Skid Plate Assembly | 10 |
| | | Change Over Assembly | 11 |

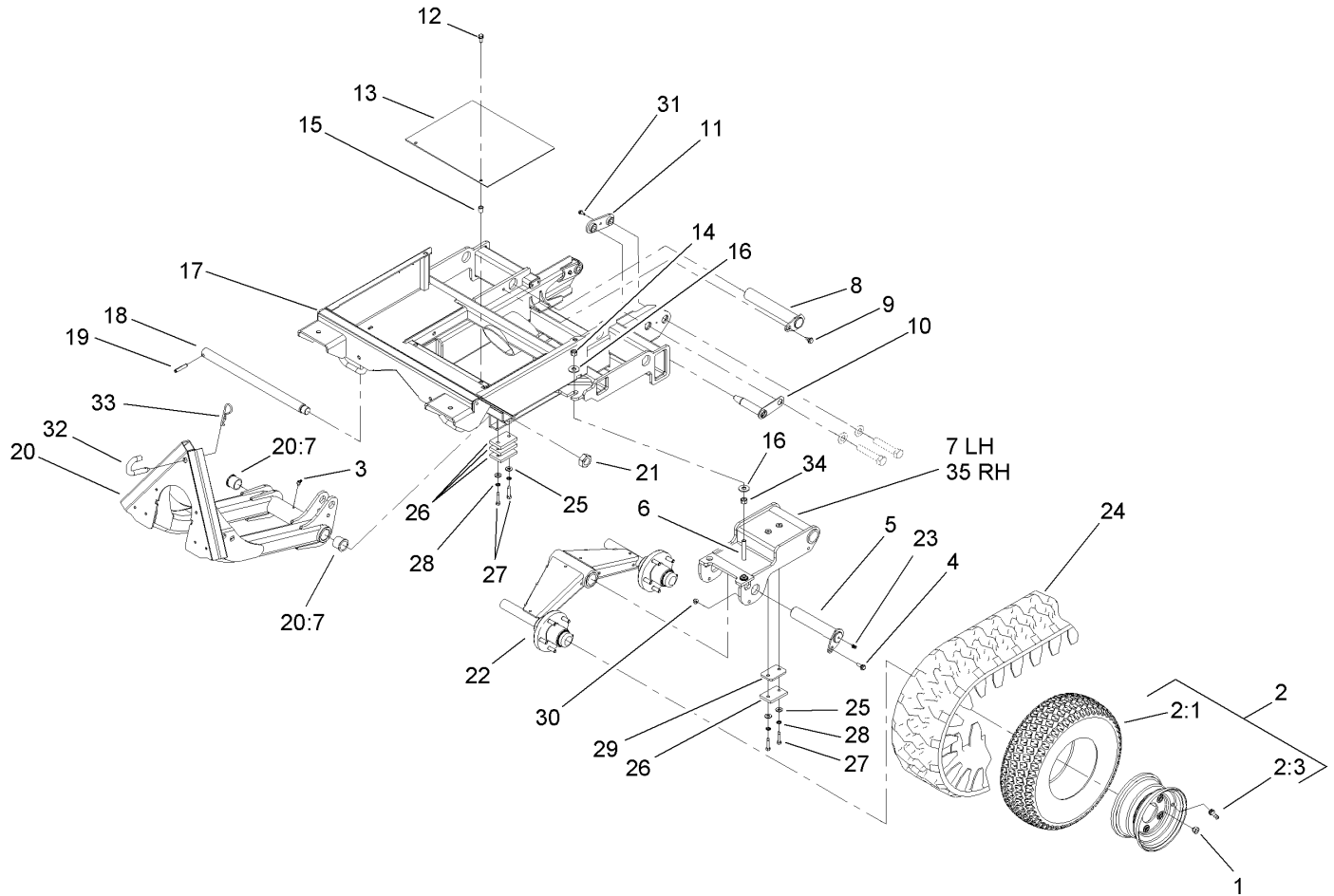
Part Description Abbreviations

Part descriptions in this catalog may include the following abbreviations.

| | |
|--|--|
| AR. as required | HYD. hydraulic |
| ASM. assembly | LH. left hand |
| BBC. blade brake clutch | NI. nylon insert |
| CARR. carriage | NPTF. national pipe thread fine |
| DEG. degrees | PFH. phillips flat head |
| EXT. external | PPH. phillips pan head |
| FH. flat head | PPHTF. phillips pan head thread forming |
| GA. gauge | PRH. phillips round head |
| HD. heavy-duty | PTH. phillips truss head |
| HF. hex flange | PTO. power-take-off |
| HH. hex head | RH. right hand |
| HHF. hex head flange | ROPS. roll-over protection system |
| HHFTF. hex head flange thread forming | SFH. slotted fillister head |
| HJ. hex jam | SHH. slotted hex head |
| HLH. hex lag head | SHWH. slotted hex washer head |
| HOC. height-of-cut | SPH. slotted pan head |
| HSBH. hex socket button head | SQH. square head |
| HSFH. hex socket flat head | SRH. slotted round head |
| HSH. hex socket head | STD. standard |
| HWH. hex washer head | TAP. self tapping |
| HWHTF. hex washer head thread forming | TTH. torx truss head |

Footnotes

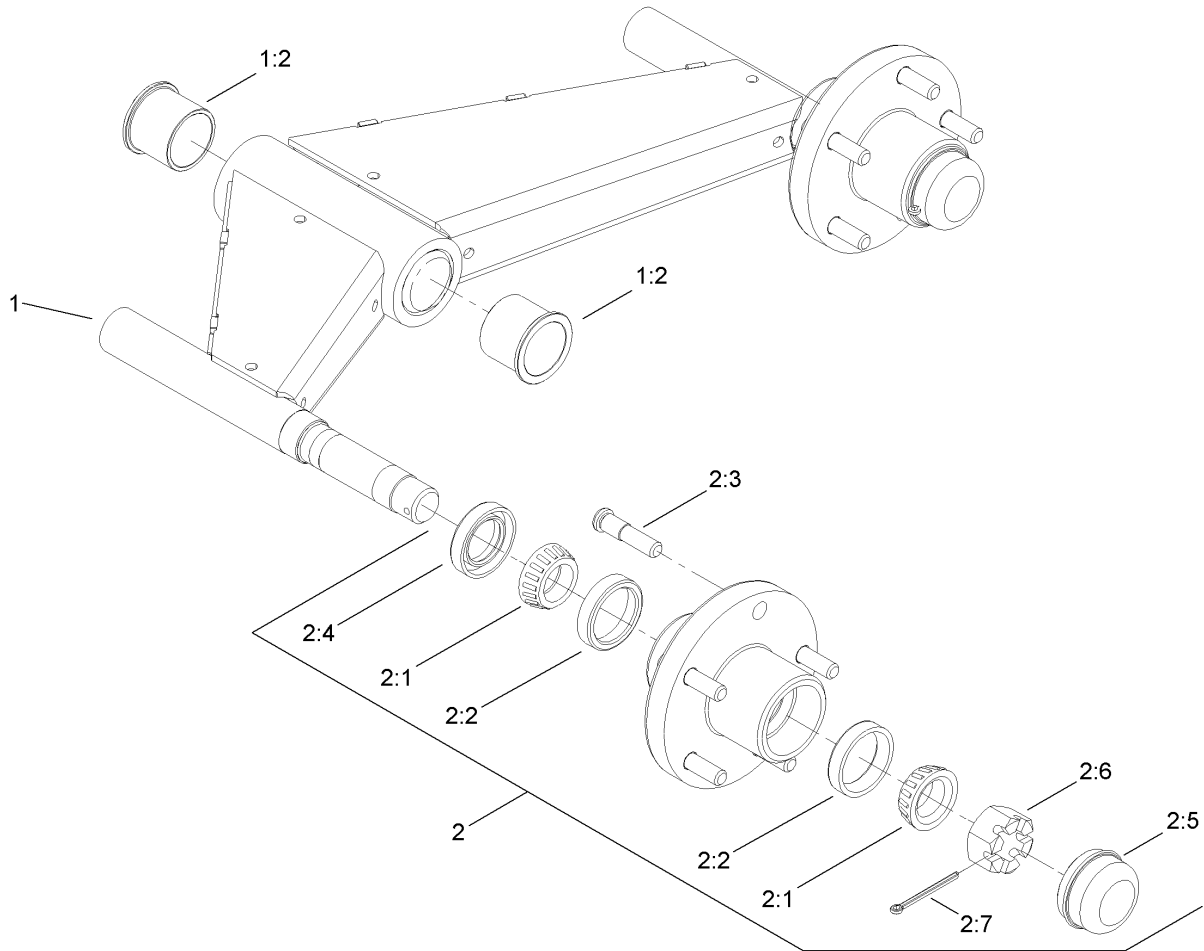
- ❶ Not serviced separately



Track Frame Assembly

| Ref | Part No. | Qty. | Description |
|------|-------------|------|----------------------|
| 1 | 23-7270 | 20 | Nut-Wheel |
| 2 | 110-5465 | 6 | Wheel And Tire ASM |
| 2:1 | 110-5467 | 1 | Tire |
| 2:3 | 232-27 | 1 | Stem-Valve |
| 3 | 302-11 | 1 | Fitting-Lube, 45 DEG |
| 4 | 27-0410 | 2 | Screw-Shoulder |
| 5 | 108-9857 | 2 | Lower Pivot Pin ASM |
| 6 | 105-1088 | 2 | Stud |
| 7 | 108-5195-03 | 1 | LH Pivot ASM |
| 8 | 110-9765 | 2 | Upper Pivot Pin ASM |
| 9 | 99-5105 | 2 | Bolt-Shoulder |
| 10 | 108-9870 | 2 | Coupler Pin Assembly |
| 11 | 110-9785 | 2 | Retainer Plate ASM |
| 12 | 3234-5 | 2 | Screw-HHF |
| 13 | 108-9866-03 | 1 | Plate-Cover |
| 14 | 3296-25 | 2 | Nut-Lock, NI |
| 15 | 32148-7 | 2 | Nut-Insert |
| 16 | 3256-6 | 4 | Washer-Flat |
| 17 | 110-9767-03 | 1 | Frame ASM |
| 18 | 107-2622 | 1 | Pin-Lift Arm |
| 19 | 32121-110 | 1 | Pin-Roll, Slotted |
| 20 | 112-6370-03 | 1 | Lift Arm ASM |
| 20:7 | 104-0015 | 2 | Bushing-Flange |
| 21 | 3296-49 | 1 | Nut-Lock, NI |

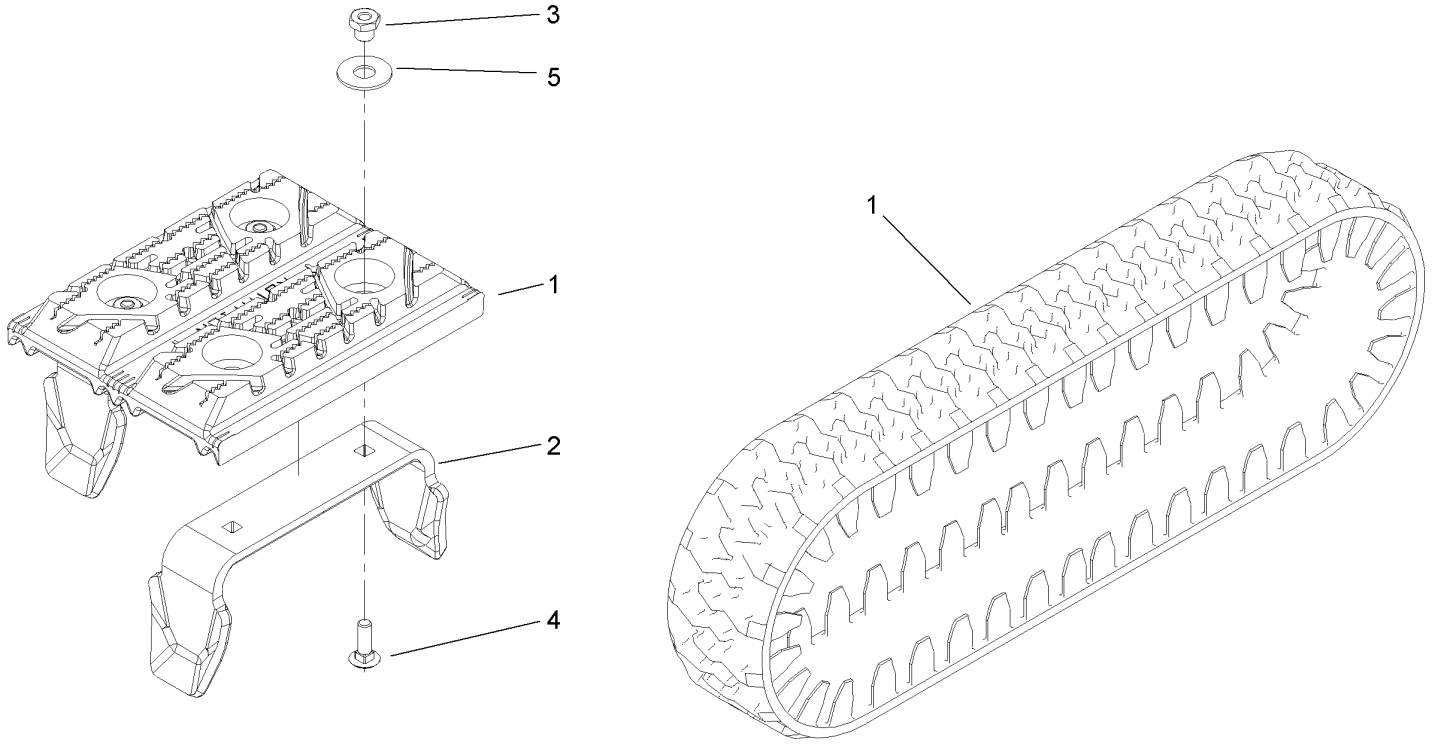
| Ref | Part No. | Qty. | Description |
|-----|-------------|------|------------------------|
| 22 | 112-1693 | 2 | Bogie ASM |
| 23 | 302-60 | 2 | Fitting-Grease, 90 DEG |
| 24 | 108-5164 | 2 | Drive Track ASM |
| 25 | 3256-3 | 8 | Washer-Flat |
| 26 | 69-9290 | 8 | Pad-Bumper |
| 27 | 32104-107 | 8 | Screw-HH |
| 28 | 3254-2 | 8 | Washer-Lock, Internal |
| 29 | 110-5454 | 2 | Plate-Spacer |
| 30 | 104-8300 | 2 | Nut-Flange, NI |
| 31 | 32144-10 | 2 | Screw-HWH |
| 32 | 110-9792 | 1 | Pin-Lock |
| 33 | 3290-256 | 1 | Pin-Hair |
| 34 | 3217-9 | 2 | Nut-HH |
| 35 | 110-9793-03 | 1 | RH Pivot ASM |



Bushing and Hub Assembly

| Ref | Part No. | Qty. | Description |
|-----|----------|------|----------------------|
| 1 | | 1 | Pivot Arm ASM |
| 1:2 | 95-8805 | 2 | Bushing |
| 2 | 107-2615 | 2 | Hub Assembly |
| 2:1 | 254-92 | 2 | Cone-Bearing, Outer |
| 2:2 | 254-72 | 2 | Bearing-Cup, Tapered |
| 2:3 | 69-2990 | 5 | Stud-Wheel |
| 2:4 | 112-1690 | 1 | Seal-Oil |
| 2:5 | 112-1494 | 1 | Cap-Dust |
| 2:6 | 32136-11 | 1 | Nut-Hex, Slot |
| 2:7 | 3272-20 | 1 | Pin-Cotter |

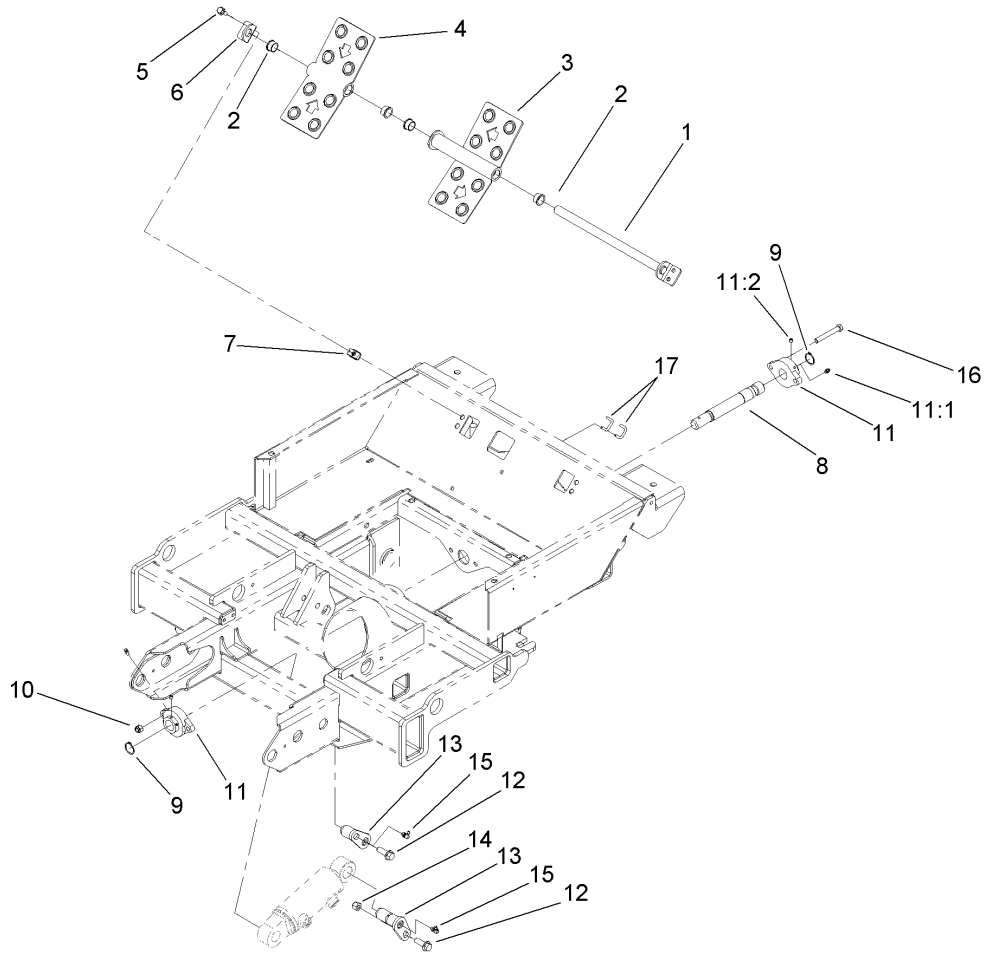
| | | | |
|--|--|--|--|
| | | | |
|--|--|--|--|



Drive Track Assembly No. 108-5164

| Ref | Part No. | Qty. | Description |
|-----|----------|------|----------------------|
| 1 | 110-9786 | 1 | Track-Rubber, Molded |
| 2 | 110-9787 | 40 | Guide-Track |
| 3 | 110-9788 | 80 | Nut-Plated, T |
| 4 | 3230-2 | 80 | Bolt-CARR |
| 5 | 110-9789 | 80 | Washer-Flat |

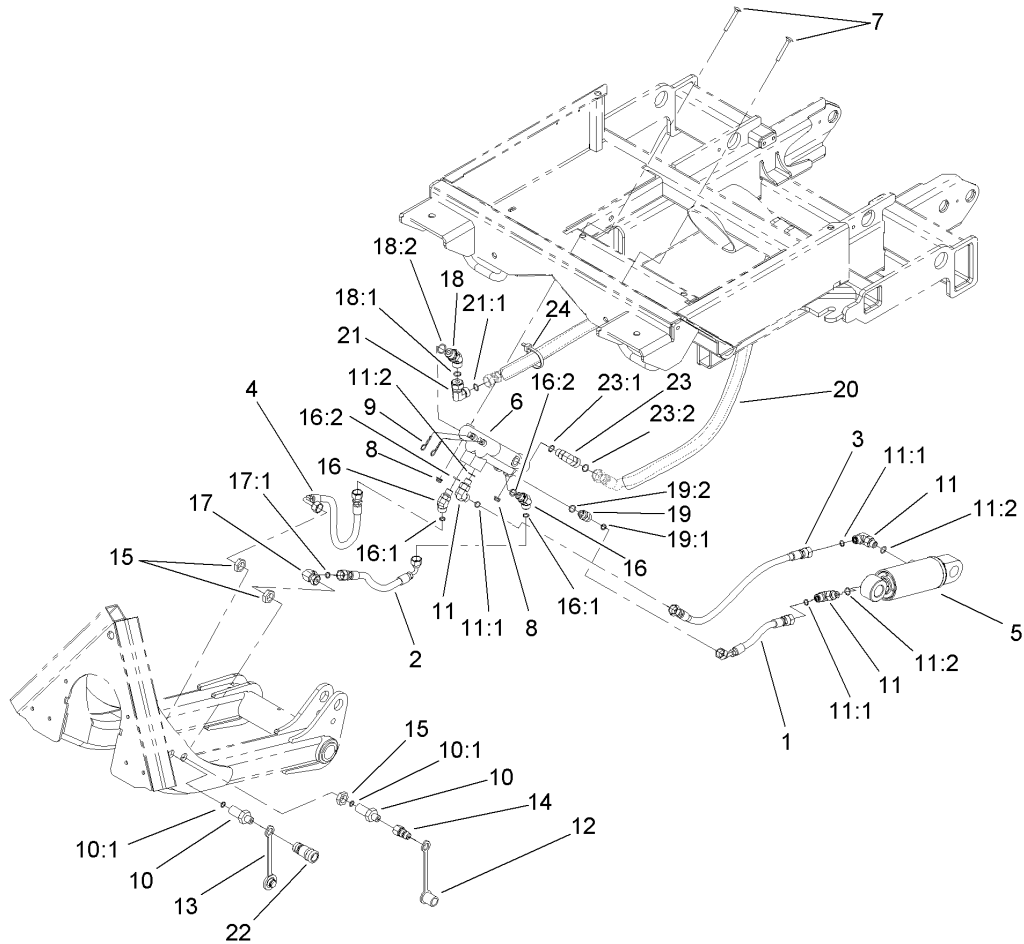
| | | | |
|--|--|--|--|
| | | | |
| | | | |
| | | | |
| | | | |
| | | | |



Foot Control Assembly

| Ref | Part No. | Qty. | Description |
|------|----------|------|---------------------------|
| 1 | 108-5181 | 1 | Control Pivot Shaft ASM |
| 2 | 256-252 | 4 | Bearing-Flange |
| 3 | 108-5176 | 1 | RH Control Pivot Tube ASM |
| 4 | 108-5175 | 1 | LH Control Pivot Tube ASM |
| 5 | 3234-5 | 4 | Screw-HHF |
| 6 | 108-5178 | 1 | Ear-Pivot |
| 7 | 110-3510 | 4 | Nut-Retainer |
| 8 | 107-2604 | 1 | Shaft |
| 9 | 32151-29 | 2 | Ring-Retaining |
| 10 | 3296-39 | 2 | Nut-Lock, NI |
| 11 | 107-7851 | 2 | Bearing-Flange, 2 Bolt |
| 11:1 | 302-5 | 1 | Fitting-Grease |
| 11:2 | 3245-35 | 2 | Screw-Set |
| 12 | 3234-15 | 2 | Screw |
| 13 | 98-2654 | 2 | Pivot Pin ASM |
| 14 | 3296-48 | 2 | Nut-Lock, NI |
| 15 | 302-60 | 3 | Fitting-Grease, 90 DEG |
| 16 | 323-13 | 2 | Screw-HH |
| 17 | 108-9871 | 2 | Link-Valve Lever |

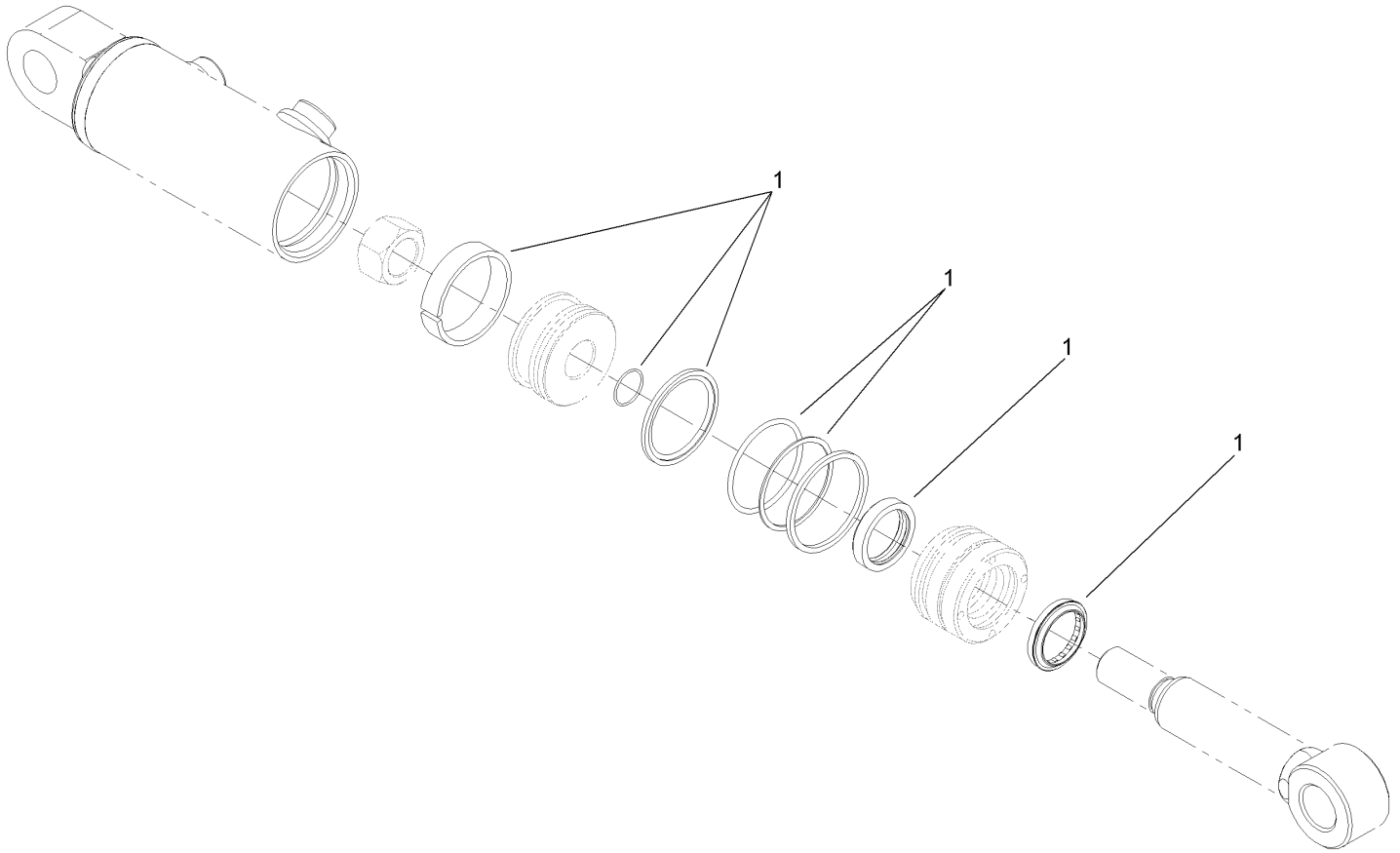
| | | | |
|--|--|--|--|
| | | | |
| | | | |
| | | | |
| | | | |



Hydraulic Assembly

| Ref | Part No. | Qty. | Description |
|------|----------|------|--------------------------|
| 1 | 110-8223 | 1 | HYD Hose ASM |
| 2 | 110-8222 | 1 | HYD Hose ASM |
| 3 | 110-8224 | 1 | HYD Hose ASM |
| 4 | 110-8225 | 1 | HYD Hose ASM |
| 5 | 108-5170 | 1 | Cylinder-Hydraulic |
| 6 | 110-3588 | 1 | Valve-Hydraulic, 2 Spool |
| 7 | 3230-33 | 2 | Screw-CARR |
| 8 | 104-7201 | 2 | Nut-HF |
| 9 | 9335044 | 2 | Pin-Hair |
| 10 | 108-9800 | 2 | Fitting-Bulkhead |
| 10:1 | 237-22 | 1 | O-Ring |
| 11 | 340-77 | 3 | Fitting-HYD, 90 DEG |
| 11:1 | 237-22 | 1 | O-Ring |
| 11:2 | 237-42 | 1 | O-Ring |
| 12 | 353-985 | 1 | Cap-Dust |
| 13 | 353-984 | 1 | Plug-Dust |
| 14 | 63-1240 | 1 | Nipple-Disconnect, Quick |
| 15 | 340-70 | 3 | Nut-Lock |
| 16 | 340-87 | 2 | Fitting-HYD, 45 DEG |
| 16:1 | 237-22 | 1 | O-Ring |
| 16:2 | 237-42 | 1 | O-Ring |
| 17 | 340-159 | 1 | Fitting-HYD, 90 DEG |
| 17:1 | 237-22 | 2 | O-Ring |
| 18 | 340-101 | 1 | Fitting-HYD, 45 DEG |

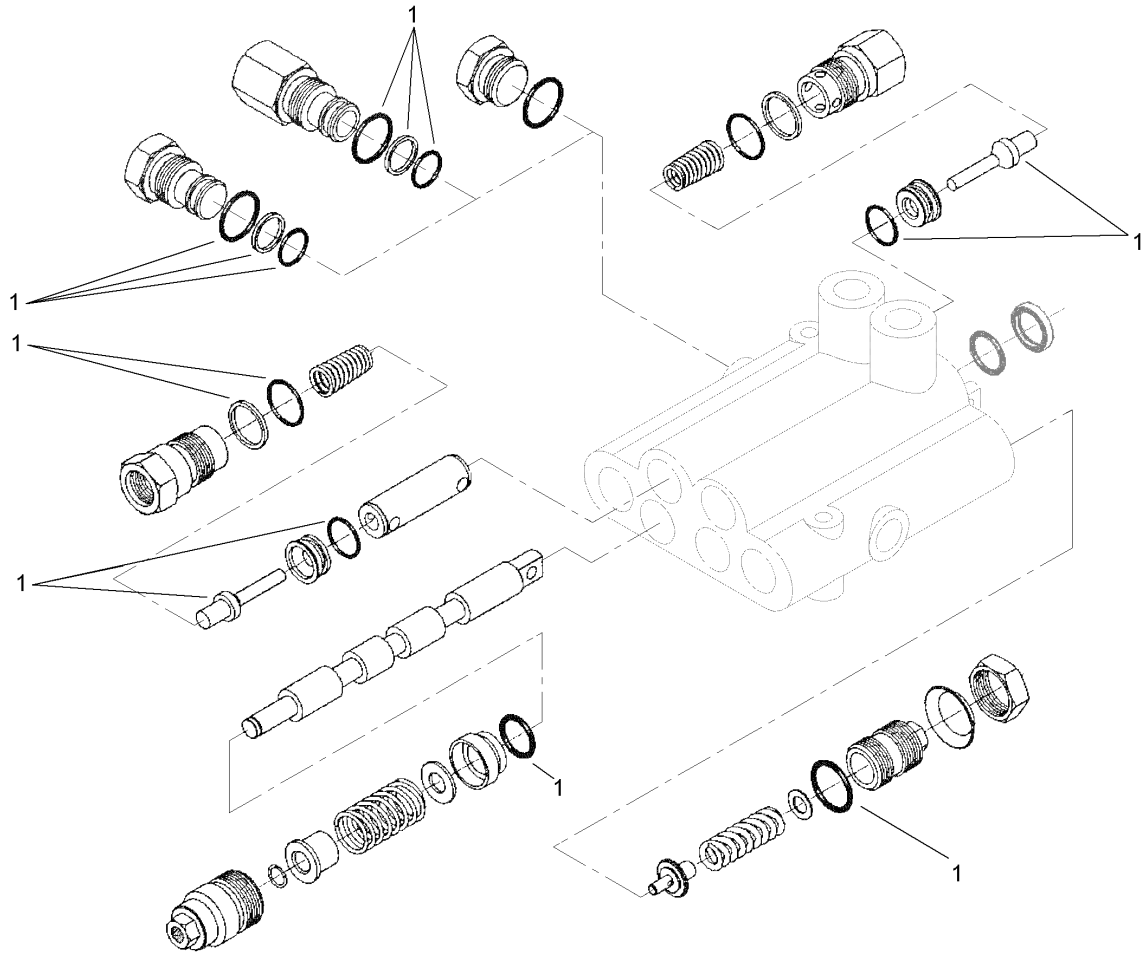
| Ref | Part No. | Qty. | Description |
|------|----------|------|---------------------------|
| 18:1 | 237-30 | 1 | O-Ring |
| 18:2 | 237-79 | 1 | O-Ring |
| 19 | 340-2 | 1 | Fitting-HYD, Straight |
| 19:1 | 237-22 | 1 | O-Ring |
| 19:2 | 237-42 | 1 | O-Ring |
| 20 | 112-1685 | 2 | Cover-Hose |
| 21 | 94-6031 | 1 | Fitting-HYD |
| 21:1 | 237-30 | 1 | O-Ring |
| 22 | 63-1220 | 1 | Coupler-Disconnect, Quick |
| 23 | | 1 | Fitting-HYD, 90 DEG |
| 23:1 | 237-30 | 1 | O-Ring |
| 23:2 | 237-42 | 1 | O-Ring |
| 24 | 3290-378 | 4 | Tie-Cable |



Hydraulic Cylinder Assembly No. 108-5170

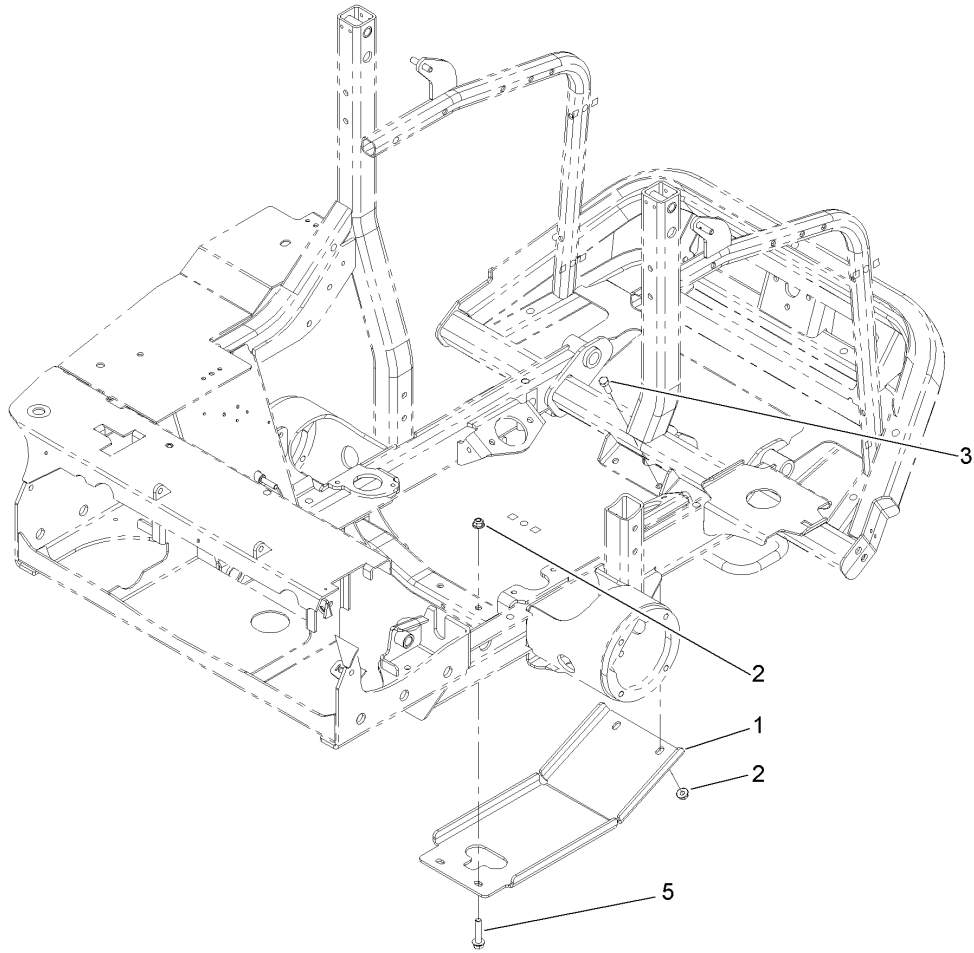
| Ref | Part No. | Qty. | Description |
|-----|----------|------|-----------------------------|
| 1 | 110-6445 | 1 | Seal Kit-Hydraulic Cylinder |

|--|--|--|--|



Hydraulic Valve Assembly No. 110-3588

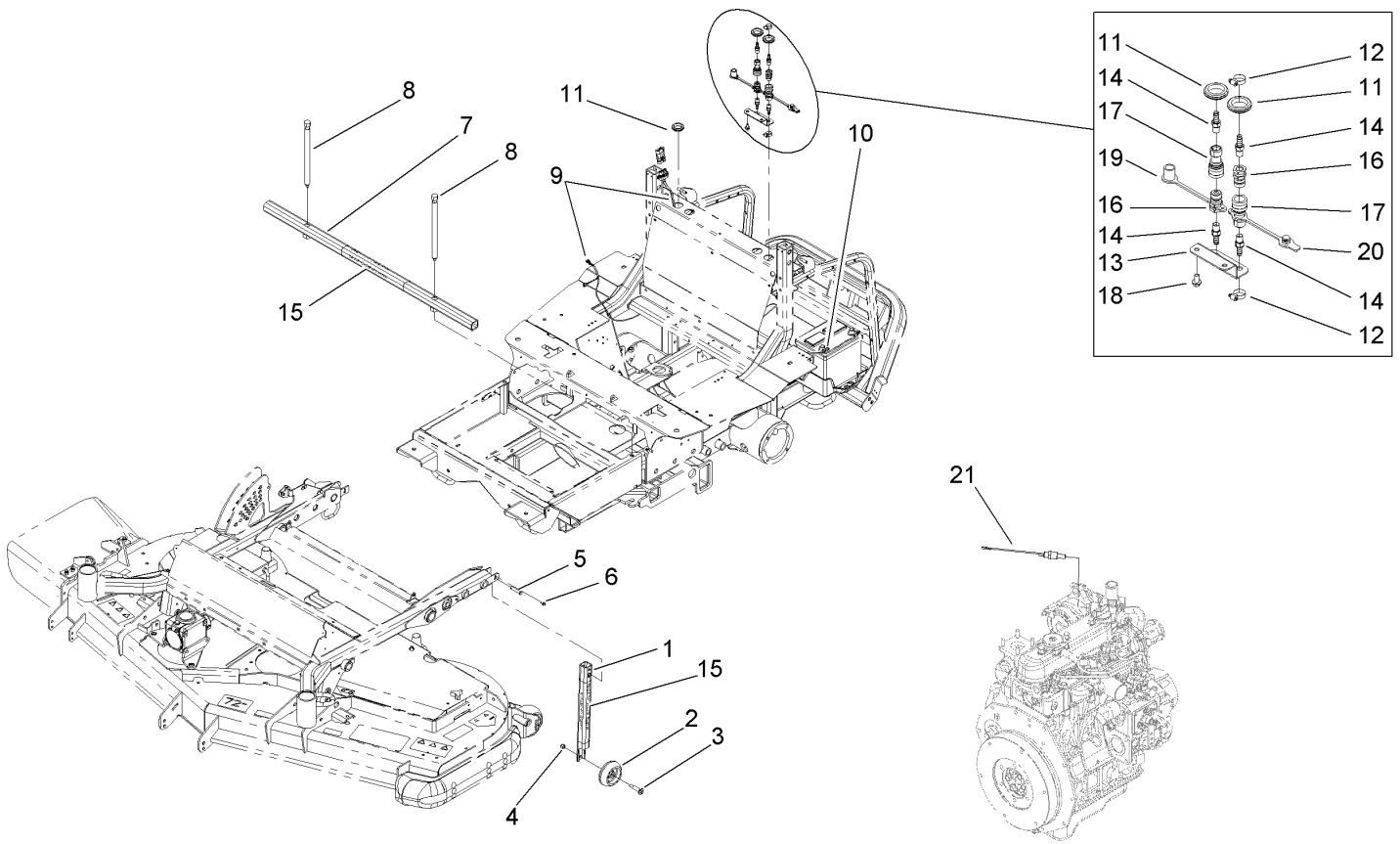
| Ref | Part No. | Qty. | Description |
|-----|----------|------|-------------|
| 1 | 99-3530 | 1 | Seal Kit |
| | | | |
| | | | |
| | | | |
| | | | |
| | | | |
| | | | |
| | | | |
| | | | |
| | | | |
| | | | |



Skid Plate Assembly

| Ref | Part No. | Qty. | Description |
|-----|-------------|------|----------------|
| 1 | 110-5516-03 | 1 | Plate-Skid |
| 2 | 104-8301 | 4 | Nut-Flange, NI |
| 3 | 323-6 | 2 | Screw-HH |
| 5 | 3234-19 | 2 | Screw-HHF |

| | | | |
|--|--|--|--|
| | | | |
|--|--|--|--|



Change Over Assembly

| Ref | Part No. | Qty. | Description |
|-----|-------------|------|----------------------------|
| 1 | 110-5491-03 | 2 | Tube-Upright, Deck Removal |
| 2 | 701756 | 2 | Wheel-Gage |
| 3 | 56-6591 | 2 | Bolt-Wheel |
| 4 | 3296-39 | 2 | Nut-Lock, NI |
| 5 | 283-82 | 2 | Pin-Clevis |
| 6 | 32144-4 | 2 | Screw-HWH |
| 7 | 110-5456-03 | 1 | Tube ASM |
| 8 | 112-6358 | 2 | Screw |
| 9 | 110-1667 | 1 | Harness-Wire |
| 10 | 108-9455 | 1 | Harness-Wire, Fusible Link |
| 11 | 240-3 | 3 | Grommet-Rubber |
| 12 | 2412-36 | 4 | Clamp-Hose |
| 13 | 112-1498 | 1 | Plate-Bulkhead |
| 14 | 108-0342 | 4 | Fitting-Straight |
| 15 | 112-6312 | 3 | Decal-Warning |
| 16 | 108-9899 | 2 | Coupler |
| 17 | 108-9898 | 2 | Coupler |
| 18 | 32144-14 | 2 | Screw-HWH |
| 19 | 106-7881 | 1 | Cap-Dust, HYD |
| 20 | 106-7882 | 1 | Plug-Dust, HYD |
| 21 | 112-6347 | 1 | Switch-Temp, Dual |

| | | | |
|--|--|--|--|
| | | | |
| | | | |
| | | | |
| | | | |

