



# 32in Recycler<sup>®</sup> Kit

## For Fixed Deck Mid-Size Mowers

Model No. 110-4915

### Installation Instructions

**Note:** Determine the left and right sides of the machine from the normal operating position.

## Safety

### Side Discharge or Mulch Grass



Without the grass deflector, discharge cover, or complete grass catcher assembly mounted in place, you and others are exposed to blade contact and thrown debris. Contact with rotating mower blade(s) and thrown debris will cause injury or death.

- Never remove the grass deflector from the mower because the grass deflector routes material down toward the turf. If the grass deflector is ever damaged, replace it immediately.
- Never put your hands or feet under the mower.
- Never try to clear the discharge area or mower blades unless you disengage the power take off (PTO) lever and turn the ignition key to off. Also remove the key and pull the wire(s) off the spark plug(s).

Ensure the mower has the hinged grass deflector that disperses clippings to the side and down toward the turf, while in side discharge mode.

To mulch grass clippings, the baffles must be installed into the mower as shown in the following steps.

# Installation

## Loose Parts

Use the chart below to verify that all parts have been shipped.

Step	Description	Qty.	Use
<b>1</b>	No parts required	–	Prepare the mower.
<b>2</b>	No parts required	–	Remove the existing blades.
<b>3</b>	No parts required	–	Remove the existing discharge baffle.
<b>4</b>	Baffle Bolt (5/16 x 5/8 inch) Flange nut (5/16 inch)	1 3 6	Install the baffle.
<b>5</b>	Discharge plate Bolt (3/8 x 3/4 inch) Flange nut (3/8 inch)	1 4 4	Install the discharge plate.
<b>6</b>	Blocker plate Carriage bolt (1/4 x 3/4 inch) Flange nut (1/4 inch) Bolt (3/8 x 1-1/4 inches) Flange nut (3/8 inch)	1 2 2 1 1	Install the blocker plate.
<b>7</b>	Kicker Bolt (5/16 x x 5/8 inch) Flange nut (5/16 inch)	2 4 4	Install the kickers.
<b>8</b>	Recycler blades	2	Install the new blades.

### Step **1**

## Preparing the Mower

### No Parts Required

#### Procedure

1. Thoroughly clean mower deck. All debris must be removed to ensure baffles will fit properly against mower deck.
2. Repair all bent or damaged areas of mower deck and replace any damaged or missing parts.

### Step **2**

## Removing the Existing Blades

### No Parts Required

#### Procedure

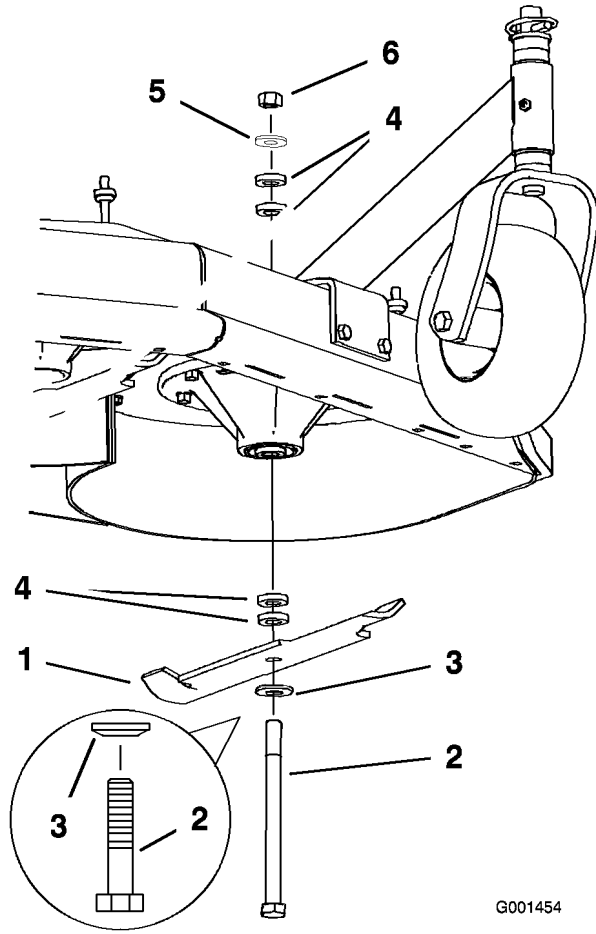
Remove the existing blades from the spindles (Figure 1).

**Note:** Save the blades for use when in side discharge mode. Use the blade bolt and washer for installing the recycler blades in Step 4.



A blade is sharp. Contact with sharp blade can cause serious personal injury.

Wear gloves or wrap sharp edges of the blade with a rag.



**Figure 1**

- |                  |                |
|------------------|----------------|
| 1. Blade         | 4. Spacer      |
| 2. Blade bolt    | 5. Thin washer |
| 3. Curved washer | 6. Nut         |

## Step

# 3

## Removing the Existing Discharge Baffle

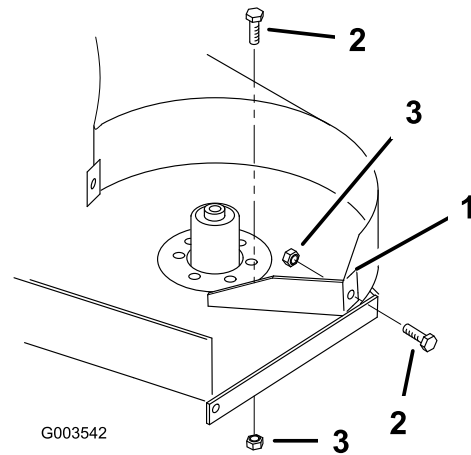
### No Parts Required

### Procedure

**Note:** In the steps below, the bolts are threaded into the mower deck. Remove the nuts first before removing bolts.

1. Remove the knobs and mower belt cover from the mower deck (Figure 2).
2. Remove the bolts and flange nuts holding the discharge baffle in place (Figure 2).

**Note:** Save the baffle and hardware for use when changing to side discharging mode.



**Figure 2**

- |                     |             |
|---------------------|-------------|
| 1. Discharge baffle | 3. Lock Nut |
| 2. Bolt             |             |

## Step

# 4

## Installing the Baffle

### Parts needed for this step:

1	Baffle
3	Bolt (5/16 x 5/8 inch)
6	Flange nut (5/16 inch)

### Procedure

1. Remove the 5 bolts and flange nuts from the holes where the baffles will be installed (Figure 3).

**Note:** Save the previously removed hardware for use when using the mower in side discharge mode.

2. Place the baffle inside cutting chamber with studs through the top of the mower deck.
3. Secure the baffle to top of the mower with 2 bolts (5/16 x 5/8 inch) and 2 flange nuts (5/16 inch) and to the back of the cutting chamber with a bolt (5/16 x 5/8 inch) and a flange nut (5/16 inch) (Figure 3).

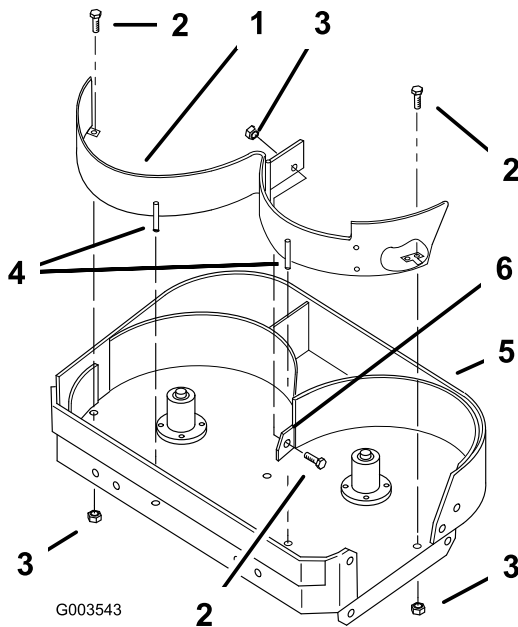


Figure 3

- |                            |                            |
|----------------------------|----------------------------|
| 1. Baffle                  | 4. Studs on baffle         |
| 2. Bolt, (5/16 x 5/8 inch) | 5. Mower deck              |
| 3. Flange nut, (5/16 inch) | 6. Back of cutting chamber |

## Step

# 5

## Installing the Discharge Plate

### Parts needed for this step:

1	Discharge plate
4	Bolt (3/8 x 3/4 inch)
4	Flange nut (3/8 inch)

### Procedure

Install the discharge plate to the outside of the mounting bracket with 4 bolts (3/8 x 3/4 inch) and 4 nuts (3/8 inch) (Figure 4).

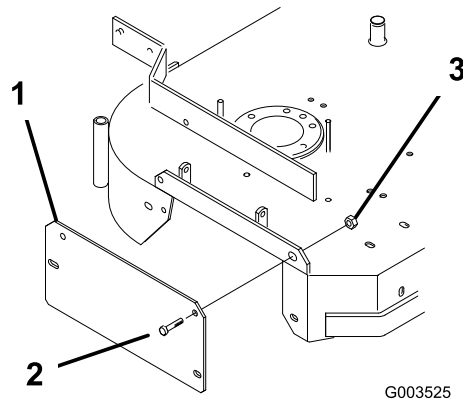


Figure 4

- |                    |                          |                   |
|--------------------|--------------------------|-------------------|
| 1. Discharge plate | 2. Bolt (3/8 x 3/4 inch) | 3. Nut (3/8 inch) |
|--------------------|--------------------------|-------------------|

## Step

# 6

## Installing the Blocker Plate

### Parts needed for this step:

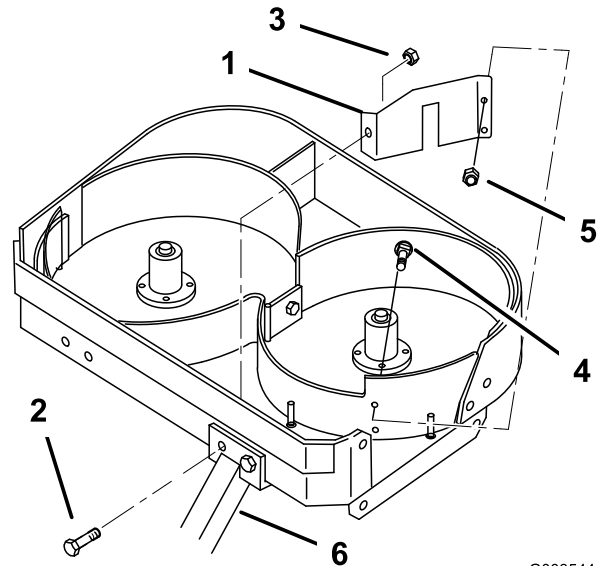
1	Blocker plate
2	Carriage bolt (1/4 x 3/4 inch)
2	Flange nut (1/4 inch)
1	Bolt (3/8 x 1-1/4 inches)
1	Flange nut (3/8 inch)

### Procedure

1. Place the blocker plate inside cutting chamber between the front of the mower deck and the baffle.

**Note:** Make sure to remove the bolt show in Figure 5 from the front caster.

2. Remove the existing bolt (3/8 x 1 inch), washer, and flange nut from the front caster where the blocker plate is to be installed (Figure 5).
3. Secure the blocker plate to the front of the mower and front caster with a bolt (3/8 x 1-1/4 inches) and a flange nut (3/8 inch) (Figure 5).
4. Secure the blocker to the front baffle with 2 bolts (1/4 x 3/4 inch) and 2 flange nuts (1/4 inch) (Figure 5).



G003544

**Figure 5**

- |  |                                    |
|--|------------------------------------|
| 1. Blocker plate   | 4. Carriage bolt, (1/4 x 3/4 inch) |
| 2. Bolt, (3/8 x 1-1/4 inches) use this for blocker plate | 5. Flange nut, (1/4 inch)          |
| 3. Flange nut, (3/8 inch)                                | 6. Front caster                    |

## Step

# 7

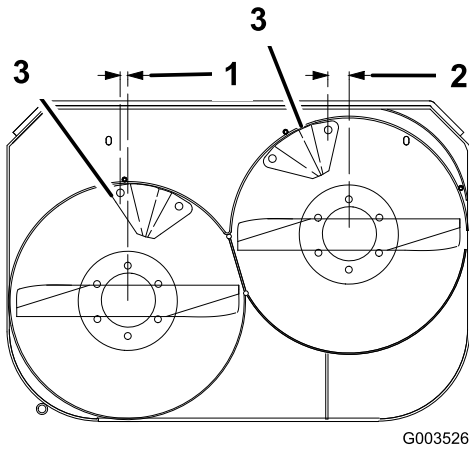
## Installing the Kickers

### Parts needed for this step:

2	Kicker
4	Bolt (5/16 x x 5/8 inch)
4	Flange nut (5/16 inch)

### Procedure

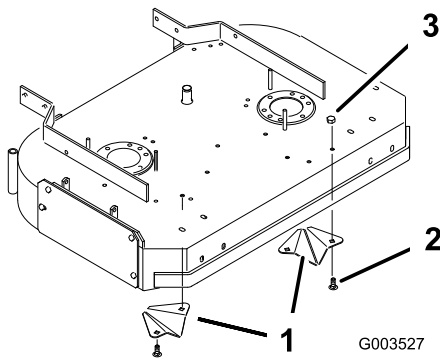
1. Measure from the spindle center lines, and locate kickers as shown (Figure 6). Position one kicker 7/16 inch (11 mm) off to the right of the right spindle and one kicker 1-7/8 inch (48 mm) off to the left of the left spindle.
2. Holding kickers tight against baffle, mark, center punch and drill 2 holes (11/32 inch) holes for each kicker (Figure 6).



**Figure 6**

1. 7/16 inch (11 mm) from center of right spindle
2. 1-7/8 inch (48 mm) from center of left spindle
3. Mark, center punch and drill 11/32 inch (9 mm) holes

3. Place the kickers inside the mower over drilled holes and install each kicker with 2 bolts (5/16 x 5/8 inch) through from the bottom of the mower, and 2 flange nuts (5/16 inch) (Figure 7).
4. Tighten all mounting hardware securely.



**Figure 7**

1. Kicker
2. Bolt, (5/16 x 5/8 inch)
3. Flange nut, (5/16 inch)

## Step **8**

### Installing the New Blades

#### Parts needed for this step:

2	Recycler blades
---	-----------------

#### Procedure

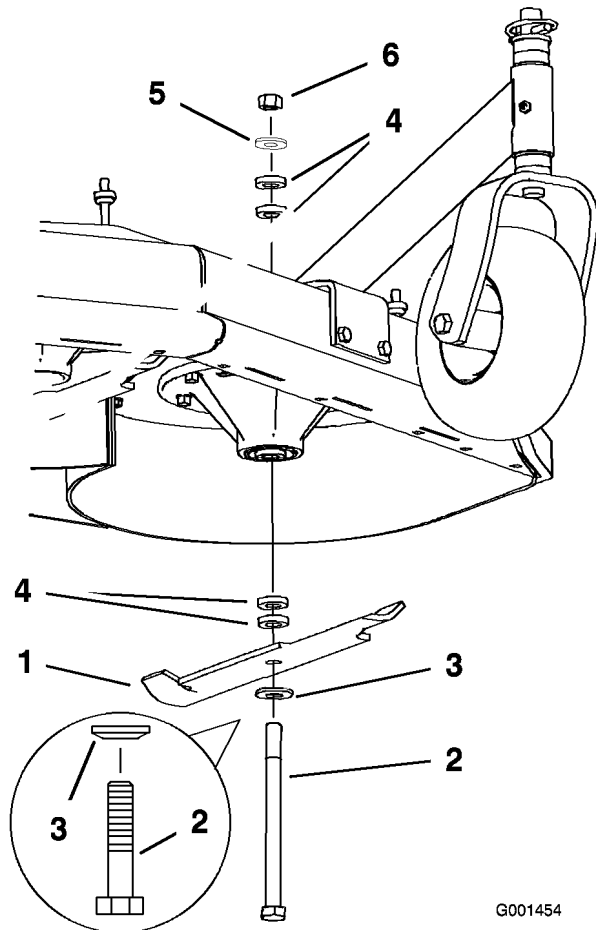
**Important:** The sail part of the blade (i.e., the turned up section) must face the inside of the mower (Figure 8).

1. Adjust the blades by using the 4 spacers (1/4 inch) on the blade spindle bolts; refer to the *Operator's Manual*.
2. Install the new blades to the spindles with washers and blade bolts that were previously removed (Figure 8).
3. Tighten the blade bolt to 75-80 ft-lb (101-108 N·m).
4. Rotate the blades and ensure there is clearance between the blades and the baffles.
5. Tighten all bolts and nuts for the baffles (Figure 5).



**A blade is sharp. Contact with sharp blade can cause serious personal injury.**

**Wear gloves or wrap sharp edges of the blade with a rag.**



G001454

**Figure 8**

- |                  |                |
|------------------|----------------|
| 1. Blade         | 4. Spacer      |
| 2. Blade bolt    | 5. Thin washer |
| 3. Curved washer | 6. Nut         |

## Operation

### Selecting the Proper Height-of-Cut

Remove approximately one inch or no more than 1/3 of the grass blade when cutting. In exceptionally lush and dense grass you may need to raise the height-of-cut setting or convert to side discharge or bagging operations.

### Mowing in Extreme Conditions

Air is required to cut and recut grass clippings in the mower housing, so do not set the height-of-cut too low or totally surround the housing by uncut grass. Always try to have one side of the mower

housing free from uncut grass, allowing air to be drawn into the housing. When making an initial cut through the center of an uncut area, operate the machine slower and back up if the mower starts to clog.

### Mowing at Proper Intervals

Under most normal conditions you will need to mow every 4–5 days. However, grass grows at different rates at different times. Thus, in order to maintain the same height-of-cut, which is a good practice, you'll need to cut more frequently in early spring; as the grass growth rate slows in mid summer, cut only every 8–10 days. If you are unable to mow for an extended period due to weather conditions or other reasons, convert to side discharge or bagging options or mow first with the height-of-cut at a high level; then mow again 2–3 days later with a lower height setting.

### Mowing with Sharp Blades

A sharp blade cuts cleanly and without tearing or shredding the grass. A dull blade will tear and shred the grass. Tearing and shredding causes the grass to turn brown at the edges which impairs growth and increases susceptibility to disease.

### After Operating

To ensure optimum performance, clean the underside of the mower housing after each use. If residue is allowed to build up in the mower housing, cutting performance will decrease.



**Count on it.**