



Customer Service Bulletin Commercial Business Group

Date: **March 20, 2006**

Reelmaster[®] 2000, 2300, 2600, 3100, 5200, 5400, 5500, 6500 and 6700
Greensmaster[®] 3150, 3200 and 3250

<u>Model/Serial Range:</u>	<u>Model Numbers:</u>	<u>Serial Numbers:</u>
	03200, 03201	90101 - 250009999
	03422, 03427	60101 - 210009999
	03428	220000101 - 260009999
	03540, 03541	80101 - 260009999
	03543, 03544	90101 - 260009999
	03550, 03551	200000101 - 260009999
	03806, 03807, 03808	210000101 - 260009999
	04357	220000101 - 250009999
	04380, 04381	50101 - 90101
	04382	60101 - 60999
	04383	200000101 - 260009999

Subject: Reels may continue to rotate in the ‘Off’ or “Disabled” position

While the engine is running the reels may rotate, slowly or without force, after being turned “Off” or “Disabled” due to normal tolerance variations and inefficiencies in hydraulic circuitry. The rotation is usually prevented with the resistance created by light reel-to-bedknife contact, reel bearing load and tight tolerances in drive components. This rotation normally does not occur when proper maintenance is followed (refer to service list below), and the unit is operated in a manner that does not overheat the hydraulic system. This situation may be more noticeable if the recommended maintenance and bedknife contact is not maintained.

Warning: As with any cutting unit, NEVER use your hands or attempt to manually stop a reel that is turning, no matter what speed or conditions are in effect.

Should you discover that the reels rotate after being turned “Off” or while in the “Disabled” position, perform the following steps:

- Reel bearing preload properly adjusted
- Light reel-to-bedknife contact
- All bearings and pivots are greased properly
- Reel motor efficiency is within specifications

Refer to the Operator’s Manual or Service Manual for proper service and repair information.

Should the reels continue to rotate after verification that the items mentioned are working and adjusted properly, perform the following steps for the model in question:

03200 and 03201

- Install one Bi-Directional Check Valve (112-0201) according to the attached instructions

03422, 03427 and 03428

- Install one Bi-Directional Check Valve (112-0201) according to the attached instructions

03540, 03541, 03543 and 03544

- Perform the Customer Service Bulletin dated March 31, 2005
- Install two Bi-Directional Check Valves (112-0201) according to the attached instructions

03550 and 03551

- Install two Bi-Directional Check Valves (112-0200) according to the attached instructions

03806, 03807 and 03808

- Install two Bi-Directional Check Valves (112-0200) according to the attached instructions

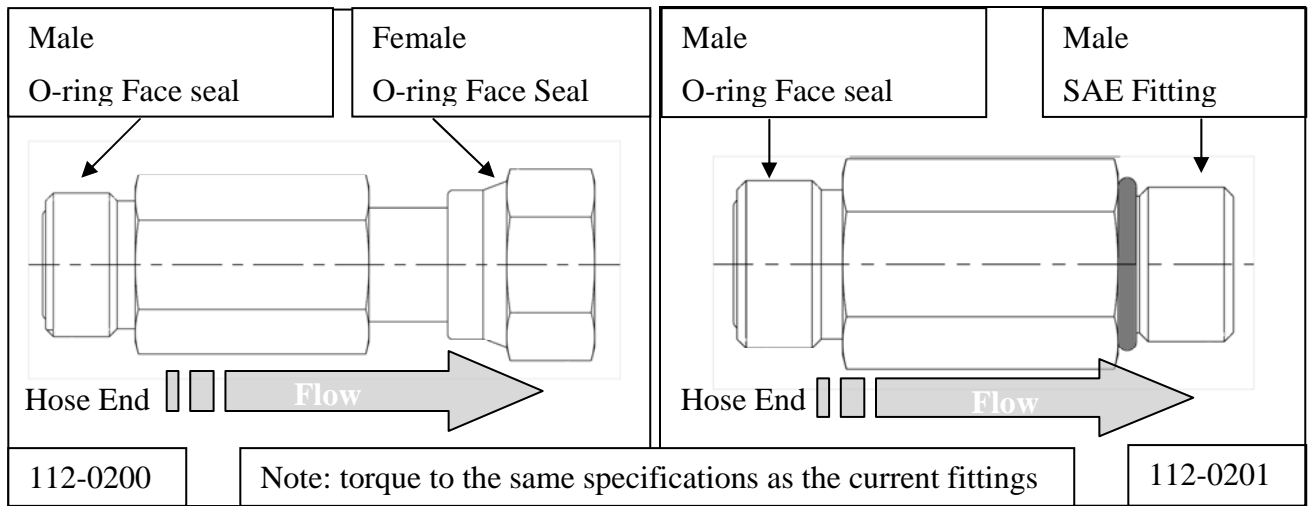
04357, 04380 - 04383

- Install one Bi-Directional Check Valve (112-0201) according to the attached instructions

Contact your local Authorized Toro Distributor for additional information or assistance with this kit installation.

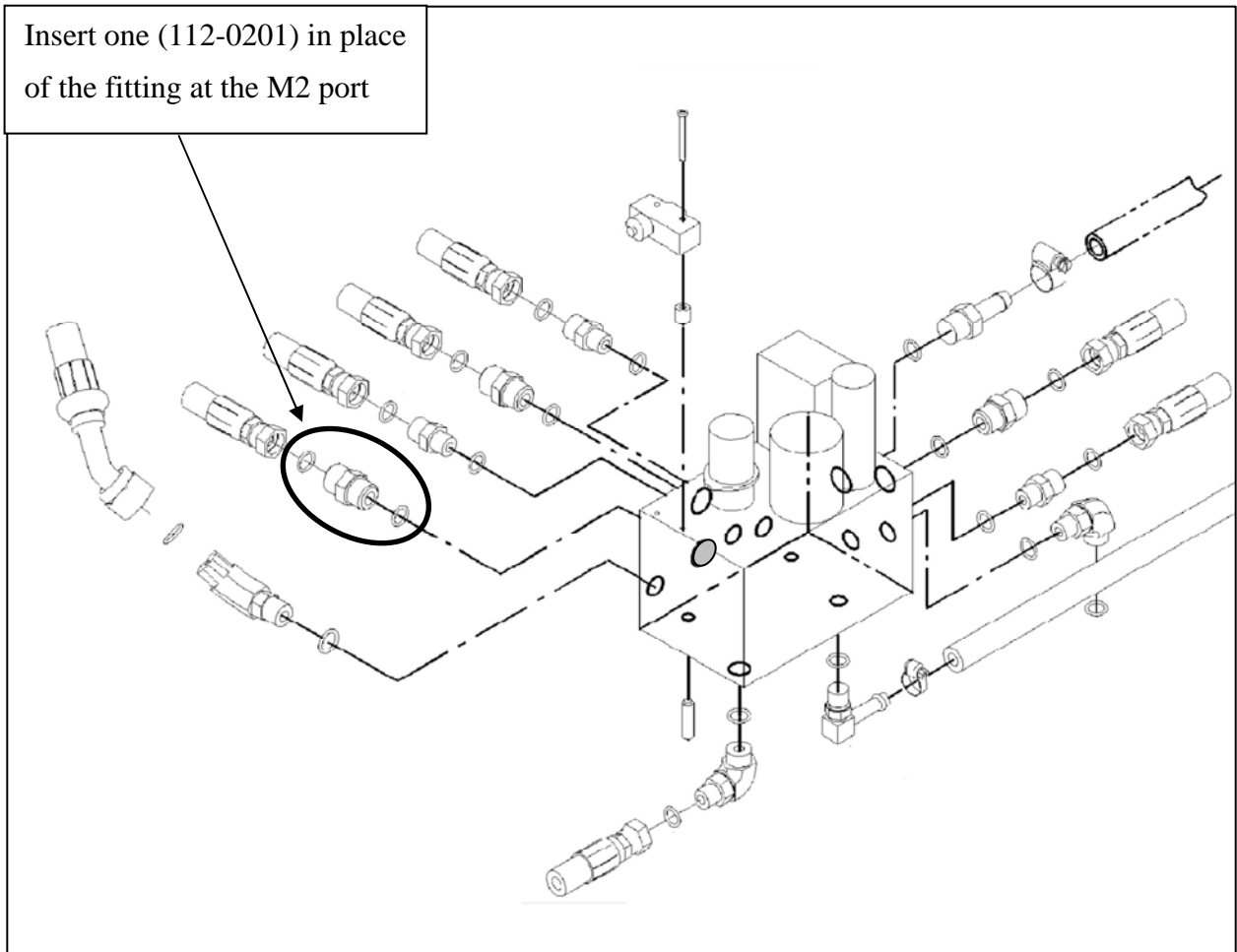
INSTALLATION INSTRUCTIONS

For Bi-Directional Check Valves (112-0200 and 112-0201)



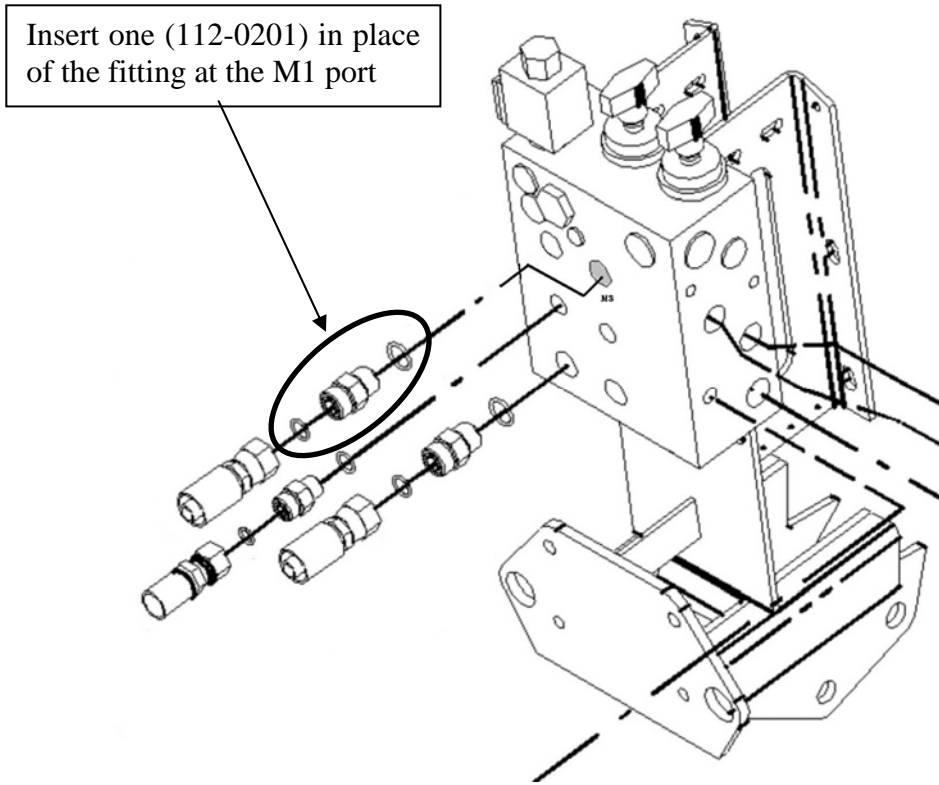
1. For Models 03200 and 03201

Install one Bi-directional Check Valve (112-0201) in place of the fitting for the hose at port **M2** of the Manifold Block as pictured below.



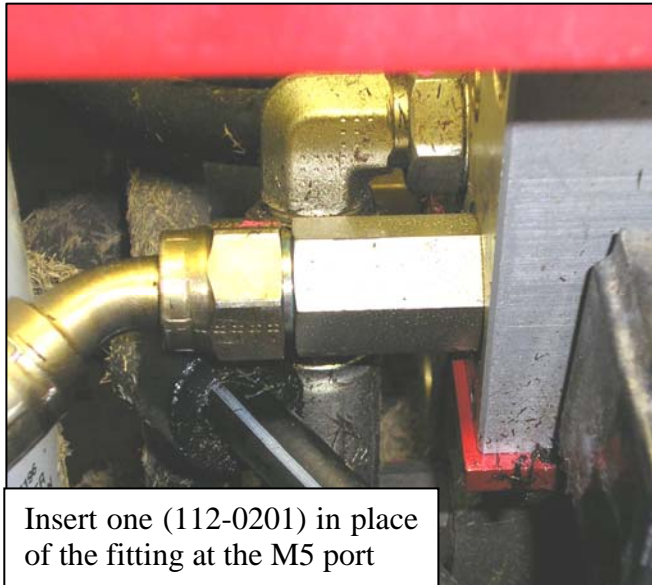
2. For Models 03422, 03428 and 03428.

Install one Bi-directional Check Valve (112-0201) in place of the fitting for the hose at port **M1** of the Manifold Block as pictured below.



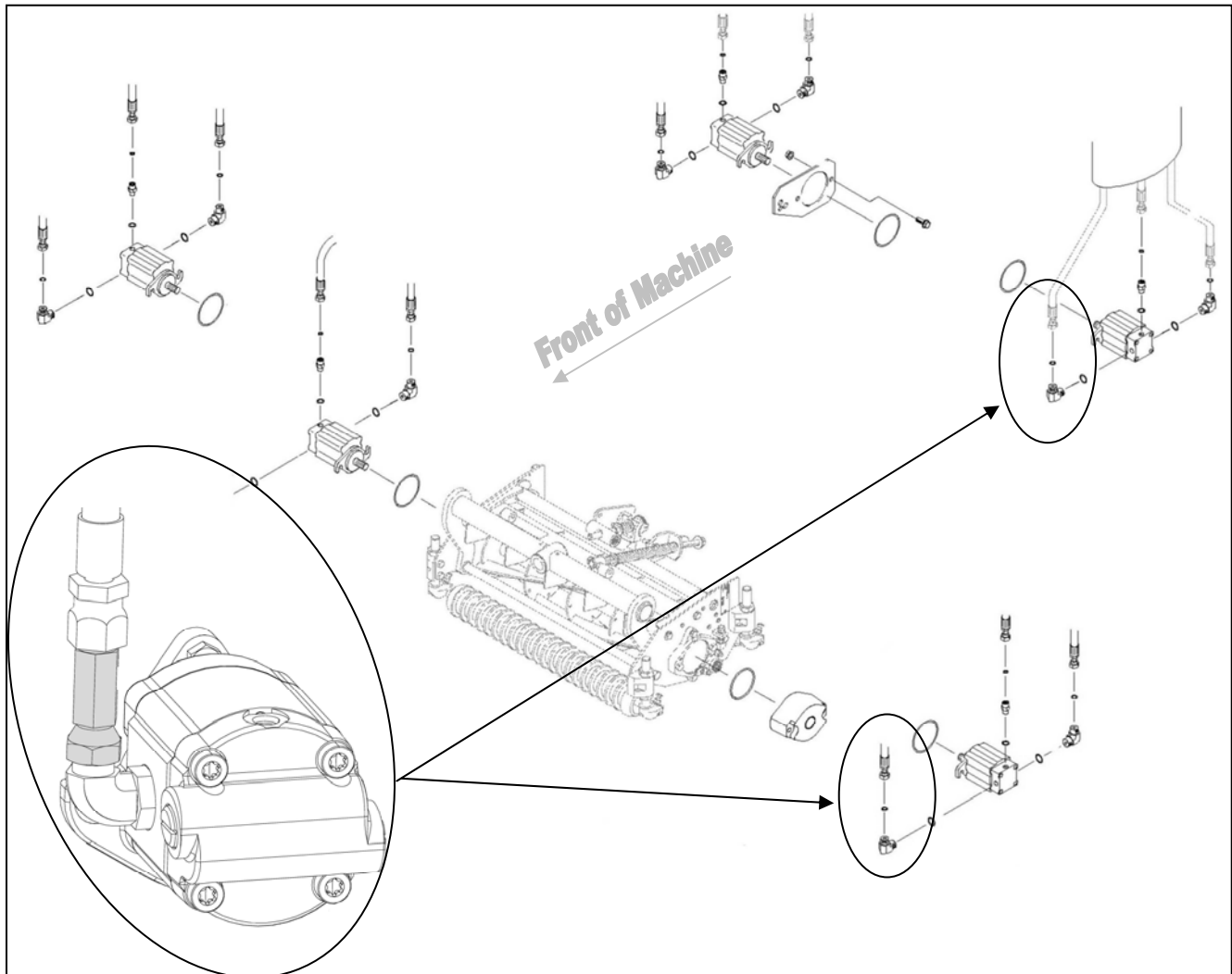
3. For Models 03540, 03541, 03543 and 03544

Install one Bi-directional Check Valve (112-0201) in place of the fitting for the hose at port M3 of the Manifold Block and one Bi-directional Check Valve (112-0201) in place of the fitting for the hose at port M5 of the Manifold Block as pictured below.



4. For Models 03550, 03551, 03806, 03807 and 03808.

Install one Bi-directional Check Valve (112-0200) in line at each fitting for the reel motor in the number two and the number four cutting unit position as pictured below.



5. For Models 04357, 04380, 04381, 04382 and 04383

Install one Bi-directional Check Valve (112-0201) in place of the front fitting for the hose at the left front motor as pictured below.

