



## Tru Trak<sup>®</sup> Sulky Fixed-Deck Mid-Size Mowers

Model No. 30109 - 260000001 and up.

### Parts Catalog

---

#### Ordering Replacement Parts

To order replacement parts, please supply the part number, the quantity, and the description of each part desired.

#### Understanding Reference Numbers

Each Identified part in an illustration has a reference number. The reference number for a part also appears in the parts list, along with other information about the part.

This catalog uses two special reference number formats, one to indicate parts in a service assembly and another to indicate the quantity of a given part in an illustration.

#### Service Assembly Reference Numbers

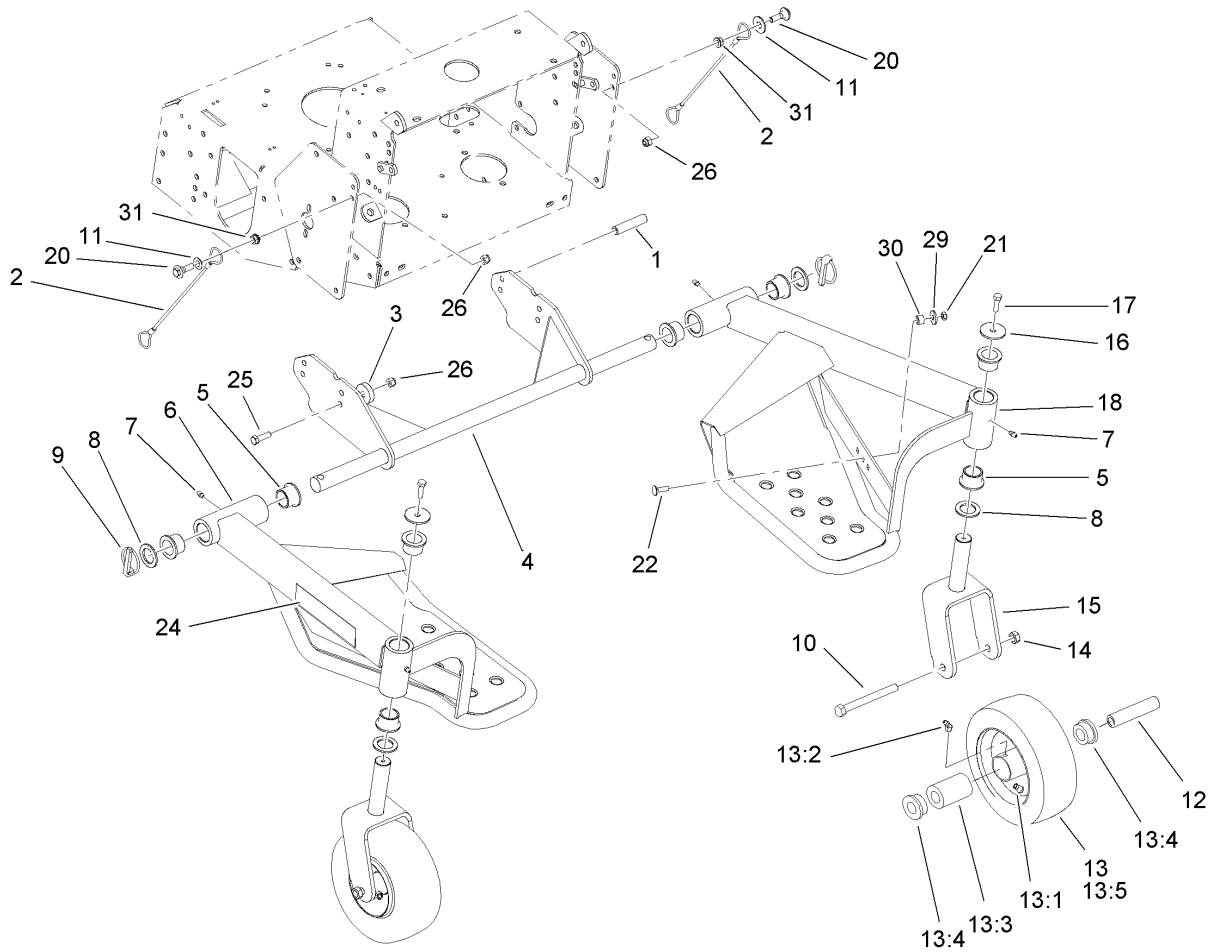
Parts in service assemblies have reference numbers in the form a:b. The a represents the reference number of the entire service assembly and the b represents a sequential number unique to each part within the service assembly.

For example, a wheel assembly might be identified by reference number 6, the tire by 6:1, the valve by 6:2, and the wheel by 6:3. When you order the assembly identified by reference number 6, you receive all parts identified by reference numbers 6:1, 6:2, and 6:3. However, you may also order any part individually. Reference numbers of this type appear in illustrations and in part lists.

#### Reference Numbers Indicating Quantity

In an illustration, if a reference number indicates more than one part, the reference number has the form nX y. The n represents the quantity of the part, the X is the multiplication symbol, and the y represents the reference number.

For example, in an illustration, the reference number 2X 37 means that two of the parts identified by reference number 37 are indicated.



## Sulky Assembly

Ref	Part No.	Qty.	Description
1	106-0877	4	Spacer-Shield
2	110-4896	2	Lanyard
3	106-0861	4	Spacer
4	106-0866-01	1	Axle-Sulky
5	94-1291	8	Bushing
6	104-8407-01	1	LH Floor Plate ASM
7	302-5	4	Fitting-Grease
8	3-6781	4	Washer-Thrust
9	283-71	2	Pin-Lynch
10	325-19	2	Screw-HH
11	3256-6	2	Washer-Flat
12	100-6453	2	Bushing-Spanner
13	100-6451	2	Caster Wheel ASM
13:1	232-27	1	Stem-Valve
13:2	302-11	1	Fitting-Lube, 45 DEG
13:3	83-4740	1	Bearing
13:4	62-5580	2	Bearing-Outside
13:5	100-6452	1	Tire-Tubeless
14	32153-5	2	Nut-Lock, Side
15	104-8402-01	2	Castor ASM
16	63-7400	2	Washer-Rebound
17	322-16	2	Screw-HH
18	104-2743-01	1	RH Floor Plate ASM
20	614672	2	Bolt-Shoulder

Ref	Part No.	Qty.	Description
21	3296-47	2	Nut-Lock, NI
22	3230-2	2	Bolt-CARR
24	104-8477	2	Decal
25	323-7	4	Screw-HH
26	3296-39	6	Nut-Lock, NI
29	1-603716	2	Washer-Friction
30	98-4695	2	Spacer
31	3290-357	2	Nut-HHF, Whiz