



Replacement Rear Hinge Kit

For Model 78502 Finishing Kit

Model No. 110-3941

Installation Instructions

Note: Determine the left and right sides of the machine from the normal operating position.

Loose Parts

Use the chart below to verify that all parts have been shipped.

Step	Description	Qty.	Use
1	No parts required	–	Prepare the mower.
2	No parts required	–	Remove the existing bracket and gage wheel.
3	New mounting plate Bolt (3/8 x 1 inch) Nut (3/8 inch)	1 2 2	Install the new mounting plate.

Step

1

Preparing the Mower

No Parts Required

Procedure

1. Thoroughly clean mower deck. All debris must be removed to ensure the mounting bracket will fit properly against mower deck.
2. Repair all bent or damaged areas of mower deck and replace any missing parts.

Step

2

Removing the Existing Mounting Plate and Gage Wheel

No Parts Required

Procedure

1. Remove the gage wheel from the existing mounting plate (Figure 1). Save this hardware.
2. Remove the existing mounting plate from the mower deck (Figure 1). Save this hardware.

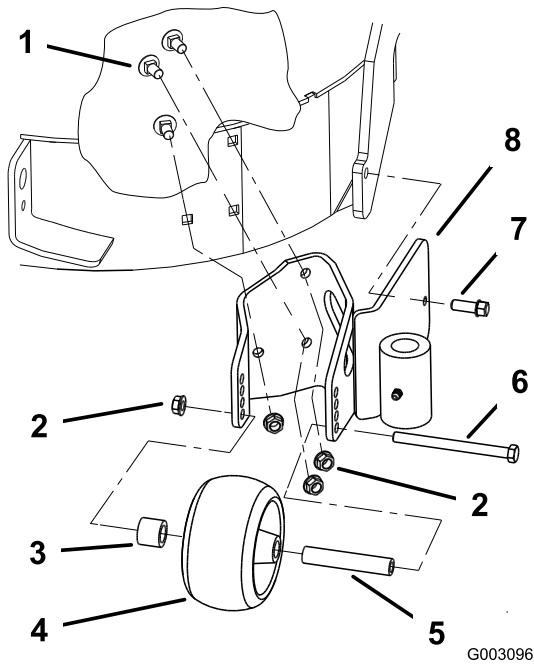


Figure 1

- | | |
|------------------|-------------------|
| 1. Carriage bolt | 5. Spacer |
| 2. Flange nut | 6. Bolt |
| 3. Bushing | 7. Tapping bolt |
| 4. Gage wheel | 8. Mounting plate |

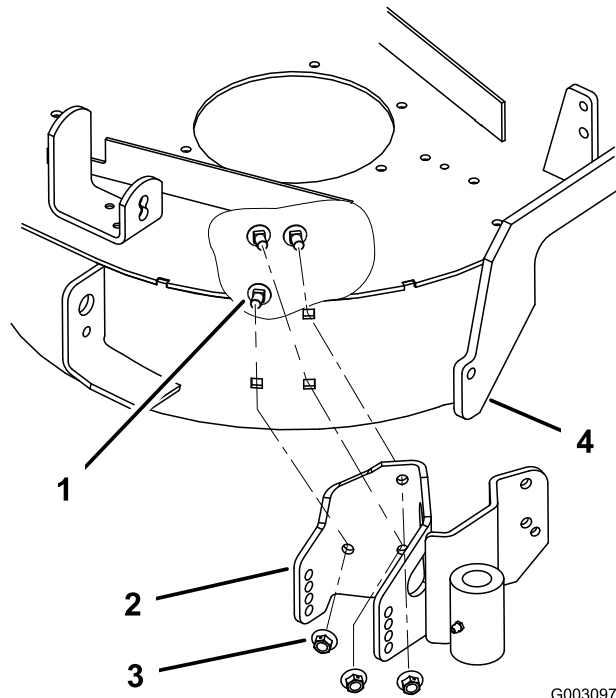


Figure 2

- | | |
|---------------------------|----------------------------|
| 1. Existing carriage bolt | 3. Existing nut (3/8 inch) |
| 2. New bracket | 4. Mower deck |

Step
3

Installing the New Mounting Plate

Parts needed for this step:

1	New mounting plate
2	Bolt (3/8 x 1 inch)
2	Nut (3/8 inch)

Procedure

1. Install the new bracket to the outside of the mower deck with the 3 existing bolts and nuts previously removed (Figure 2).

Do not tighten these bolts. These will be tightened after the blower is installed.

2. Install the blower into the new mounting plate (Figure 3).

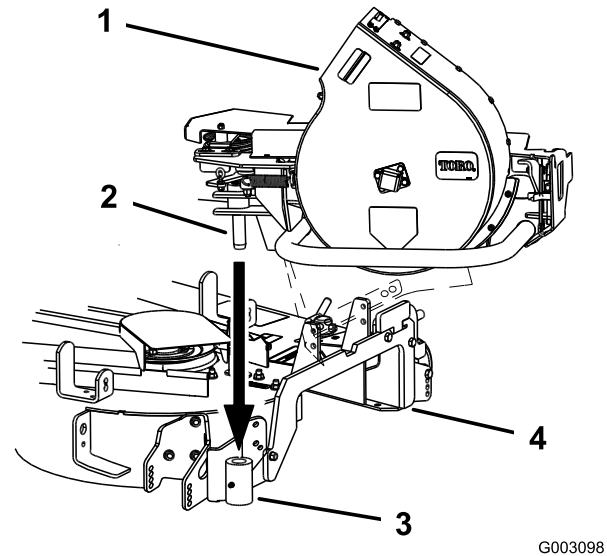


Figure 3

- | | |
|------------------------|-------------------|
| 1. Blower assembly | 3. Mounting plate |
| 2. Blower assembly peg | 4. Mower deck |

3. Close the blower and latch the front of the blower to the mower deck.
4. Tighten the 3 bolts holding the new mounting plate to the mower deck (Figure 2).

5. Unlatch the blower and remove it from the mounting plate and mower.
6. Mark and center punch the locations for the two holes in the mounting plate (Figure 4).
7. Remove the mounting plate and drill two 13/32 inch diameter holes (Figure 4).

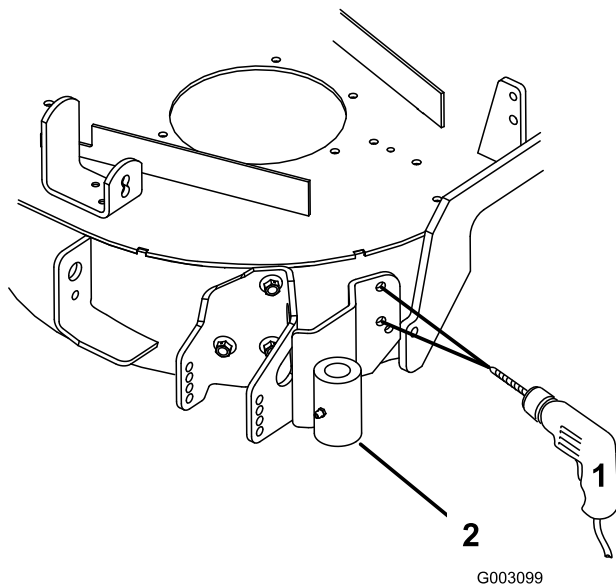


Figure 4

1. Drill 13/32 inch diameter holes here
2. New mounting plate

8. Install the new bracket to the outside of the mower deck with the 3 existing bolts and 2 new bolts (3/8 x 1 inch) and 2 nuts (3/8 inch) (Figure 5).

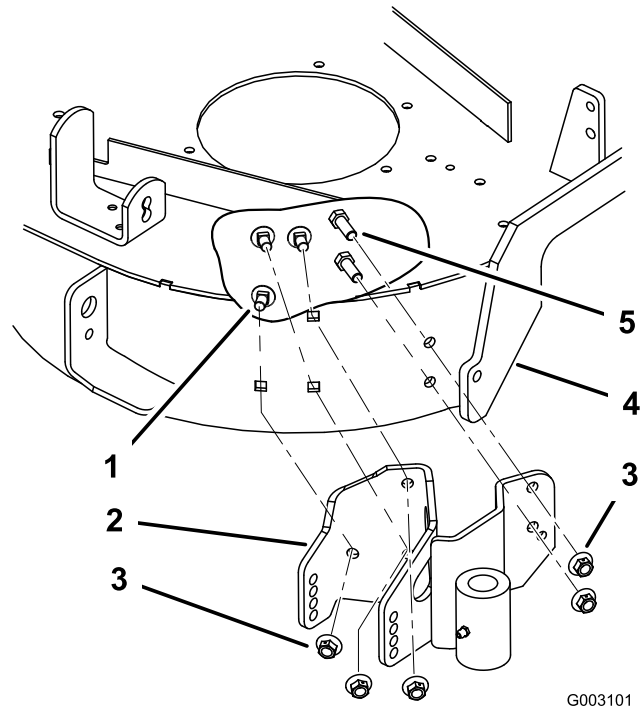


Figure 5

1. Existing carriage bolt
2. New mounting plate
3. Flange nut (3/8 inch)
4. Mower deck
5. Bolt (3/8 x 1 inch)

9. Install the previously removed gage wheel to the new mounting plate (Figure 6).

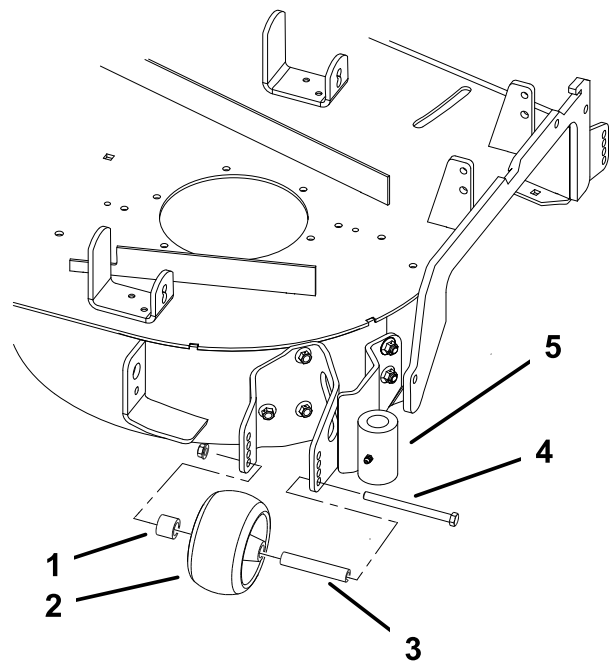


Figure 6

1. Bushing
2. Gage wheel
3. Spacer
4. Bolt
5. New mounting plate



Count on it.