



## Backhoe Compact Utility Loader

Model No. 23163 - 260000001 and up.

### Parts Catalog

---

#### Ordering Replacement Parts

To order replacement parts, please supply the part number, the quantity, and the description of each part desired.

#### Understanding Reference Numbers

Each identified part in an illustration has a reference number. The reference number for a part also appears in the parts list, along with other information about the part.

This catalog uses two special reference number formats, one to indicate parts in a service assembly and another to indicate the quantity of a given part in an illustration.

#### Service Assembly Reference Numbers

Parts in service assemblies have reference numbers in the form a:b. The a represents the reference number of the entire service assembly and the b represents a sequential number unique to each part within the service assembly.

For example, a wheel assembly might be identified by reference number 6, the tire by 6:1, the valve by 6:2, and the wheel by 6:3. When you order the assembly identified by reference number 6, you receive all parts identified by reference numbers 6:1, 6:2, and 6:3. However, you may also order any part individually. Reference numbers of this type appear in illustrations and in part lists.

#### Reference Numbers Indicating Quantity

In an illustration, if a reference number indicates more than one part, the reference number has the form nX y. The n represents the quantity of the part, the X is the multiplication symbol, and the y represents the reference number.

For example, in an illustration, the reference number 2X 37 means that two of the parts identified by reference number 37 are indicated.

# Contents

Description	Page	Description	Page
Main and Swing Frame Assembly	..... 3	Hydraulic Cylinder Assembly No. 107-9474	..... 14
Hydraulic Cylinder Assembly No. 107-9473	..... 4	Boom Assembly	..... 15
Seat and Control Assembly	..... 5	Hydraulic Cylinder Assembly No. 107-9472	..... 16
Hydraulic Valve Assembly 108-5680	..... 7	Bucket and Dipperstick Assembly	..... 17
Valve Section Assembly No. 108-5694	..... 8	Hydraulic Cylinder Assembly No. 107-9471	..... 18
Valve Section Assembly No. 108-5696	..... 9	Auxiliary Hydraulic Connection Assembly	..... 19
Valve Section Assembly No. 108-5697	..... 10	Boom, Bucket and Dippersticker Hydraulic Assembly	..... 20
Valve Section Assembly No. 108-5695	..... 11	Stabilizer and Swing Hydraulic Assembly	..... 21
Relief Valve Assembly 108-5698	..... 12	Attachments and Accessories List	..... 22
Stabilizer Leg Assembly	..... 13		

## Part Description Abbreviations

Part descriptions in this catalog may include the following abbreviations.

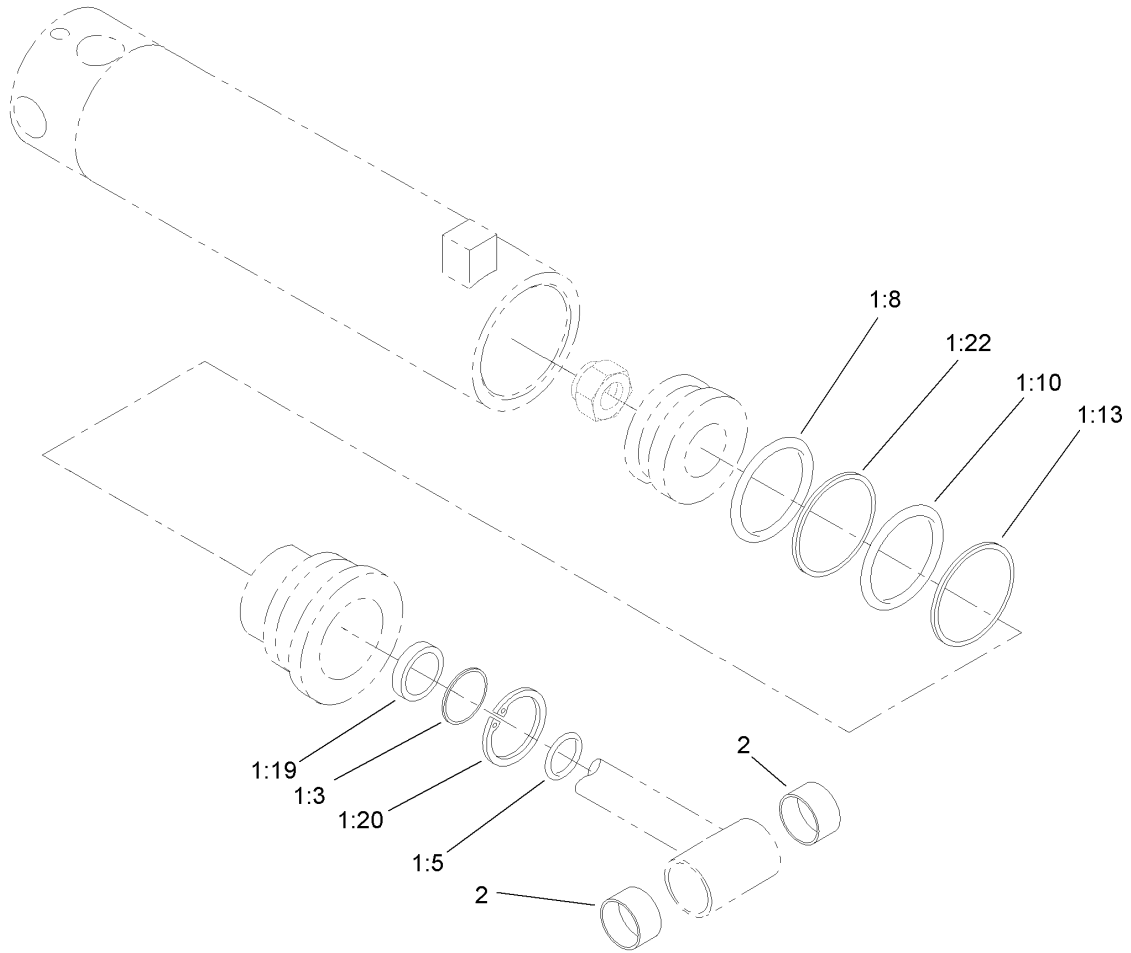
AR. .... as required	INC. .... incorporated
ASM. .... assembly	LH. .... left hand
BBC. .... blade brake clutch	NI. .... nylon insert
CARR. .... carriage	NPTF. .... national pipe thread fine
DEG. .... degrees	PFH. .... phillips flat head
EXT. .... external	PPH. .... phillips pan head
FH. .... flat head	PPHTF. .... phillips pan head thread forming
GA. .... gauge	PRH. .... phillips round head
HF. .... hex flange	PTH. .... phillips truss head
HH. .... hex head	PTO. .... power-take-off
HHF. .... hex head flange	RH. .... right hand
HHFTF. .... hex head flange thread forming	ROPS. .... roll-over-protection-system
HJ. .... hex jam	SFH. .... slotted fillister head
HLH. .... hex lag head	SHH. .... slotted hex head
HOC. .... height-of-cut	SHWH. .... slotted hex washer head
HSBH. .... hex socket button head	SPH. .... slotted pan head
HSFH. .... hex socket flat head	SQH. .... square head
HSH. .... hex socket head	SRH. .... slotted round head
HWH. .... hex washer head	STD. .... standard
HWHTF. .... hex washer head thread forming	TAP. .... self tapping
HYD. .... hydraulic	TTH. .... torx truss head

## Footnotes

❶ Not illustrated

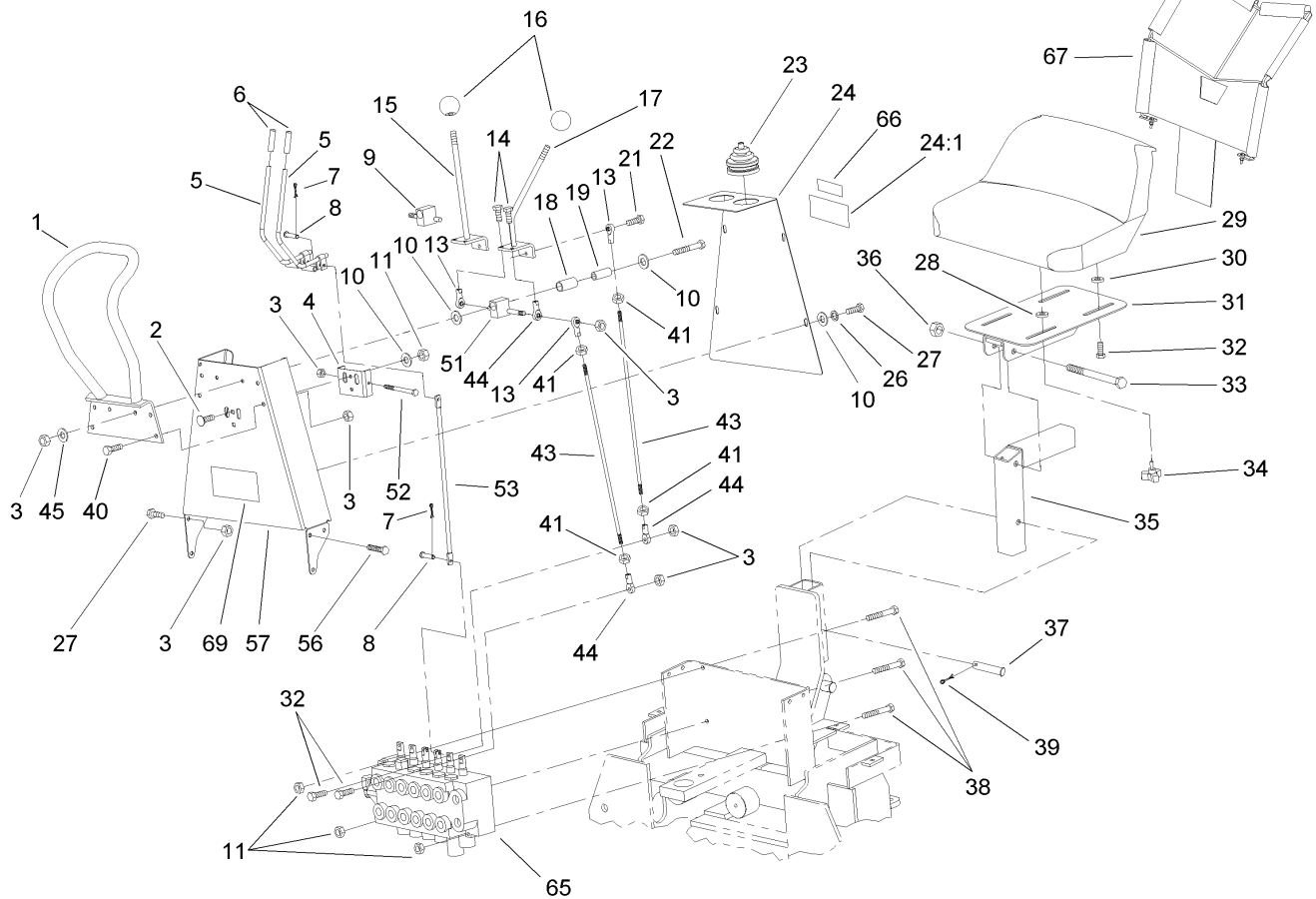
❷ Not serviced separately





### Hydraulic Cylinder Assembly No. 107-9473

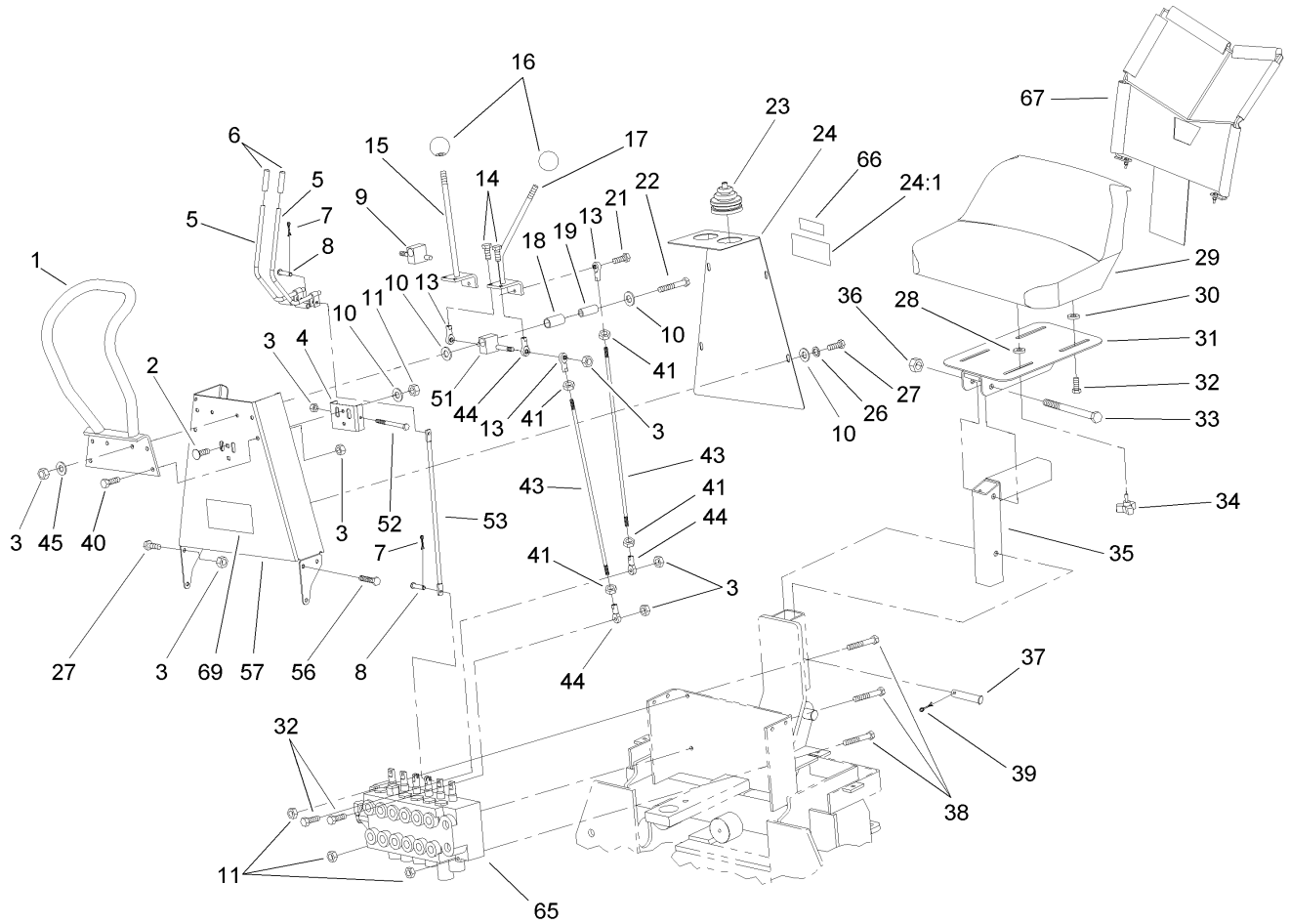
Ref	Part No.	Qty.	Description
1	108-5691	1	Cylinder Seal Kit
②1:3		1	Seal-Wiper
②1:5		1	O-Ring
②1:8		1	O-Ring
②1:10		1	O-Ring
②1:13		1	Ring-Backup
②1:19		1	Seal-Rod
②1:20		1	Ring-Retaining
②1:22		1	Ring-Piston
2	256-82	2	Bushing



## Seat and Control Assembly

Ref	Part No.	Qty.	Description
1	107-9488	1	Reference Bar ASM
2	3230-1	2	Bolt-CARR
3	3296-4	16	Nut-Lock
4	108-5652	1	U-Bracket
5	107-9477	2	Stabilizer Rod ASM
6	107-9347	2	Cap-Rubber
7	3272-6	2	Pin-Cotter
8	100-3462	2	Pin-Clevis
9	107-9491	1	RH Pivot ASM
10	3256-23	10	Washer-Flat
11	3296-29	3	Nut-Lock, NI
13	107-9344	4	Joint-Articulated
14	3210-4	4	Screw-HH
15	107-9489	1	RH Control Handle ASM
16	107-9345	2	Knob-Ball
17	107-9490	1	LH Control Handle ASM
18	107-9337	2	Bushing-Bronze
19	108-5663	2	Bushing
21	3210-5	2	Screw-HH
22	322-32	1	Screw-HH
23	107-9346	2	Boot-Lever, Control
24	107-9334	1	Valve-Rear Plate, Cover
24:1	100-4133	1	Decal-Warning
26	3253-4	4	Washer-Lock

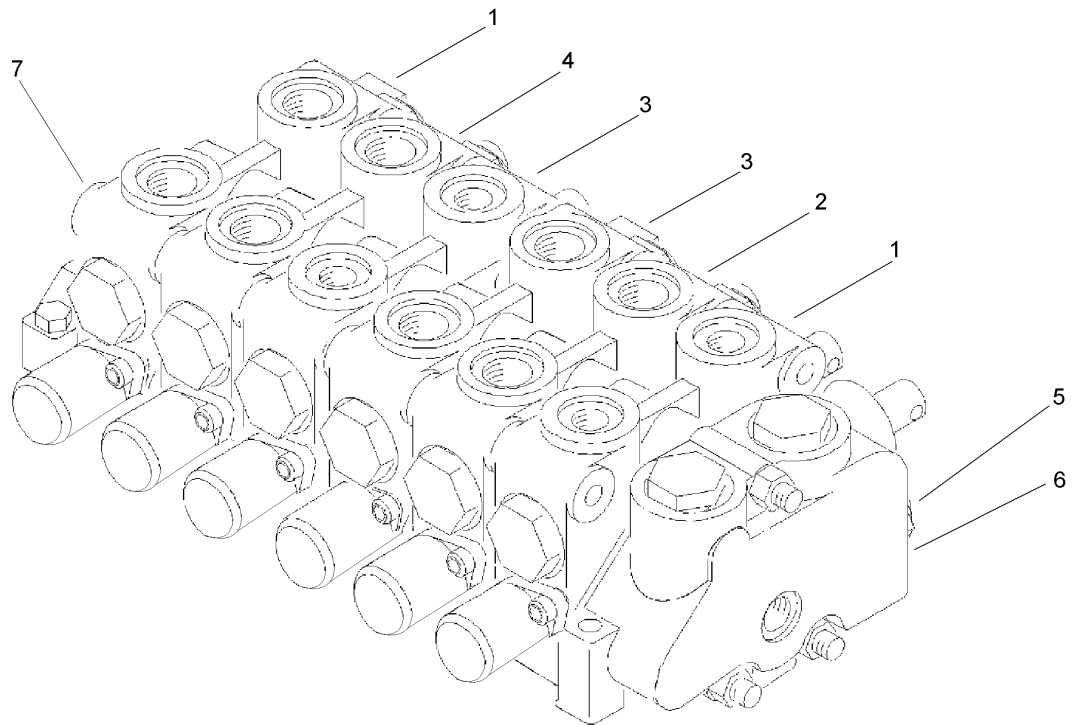
Ref	Part No.	Qty.	Description
27	3210-3	8	Screw-HH
28	109989	2	Spacer-Nylon
29	88-3950	1	Seat
30	92-6750	2	Spacer-Nylon
31	107-9485	1	Seat Plate ASM
32	92-6986	2	Bolt-Shoulder
33	325-14	1	Screw-HH
34	700806	2	Knob
35	107-9487	1	Seat Post ASM
36	3296-19	1	Nut-Hex
37	107-9339	1	Pin-Clevis
38	322-13	3	Screw-HH
39	3290-468	1	Pin-Cotter
40	323-46	4	Screw-HH
41	3219-2	8	Nut-Hex
43	107-9475	4	Rod-Control
44	1-543017	8	Balljoint-RH
45	3256-23	2	Washer-Flat
51	107-9492	1	LH Pivot ASM
52	3211-4	1	Screw-HH
53	107-9476	2	Rod-Stabilizer
56	3210-2	3	Screw-HH
57	107-9478	1	Front Shroud ASM
65	108-5680	1	Hydraulic Valve ASM



### Seat and Control Assembly (continued)

Ref	Part No.	Qty.	Description
66	108-5693	1	Decal-Control
67	106-7630	1	Backhoe Shield Kit
69	62-7400	1	Decal

--	--	--	--



## Hydraulic Valve Assembly 108-5680

Ref	Part No.	Qty.	Description			
1	108-5694	2	Section-Bucket, Swing			
2	108-5696	1	Section-Boom			
3	108-5697	2	Section-Valve, Stabilizer			
4	108-5695	1	Section-Dipper			
5	108-5698	1	Valve-Relief			
6	353-772	1	Cover-Left			
7	110-0059	1	Cover-End, RH			
●99	110-0063	1	Section Seal Kit			
●99	110-0054	1	Valve Seal Kit			
●99	110-0052	1	Tie Rod Kit			



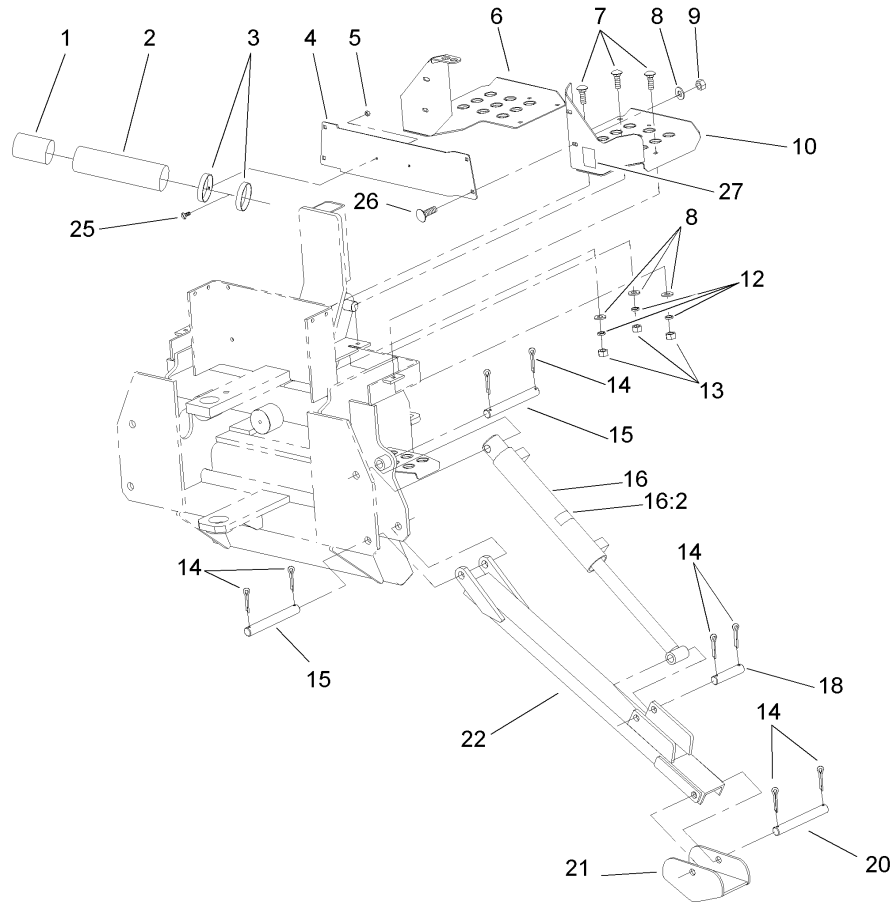












## Stabilizer Leg Assembly

Ref	Part No.	Qty.	Description
1	104-7048	1	Cap-Housing
2	104-7050	1	Housing-Manual
3	2412-120	2	R-Clamp
4	107-9484	1	Plate-Cover, Valve
5	3296-2	2	Nut-Lock
6	107-9498	1	Plate-Floor, RH
7	3230-2	6	Bolt-CARR
8	3256-23	10	Washer-Flat
9	3296-29	4	Nut-Lock, NI
10	107-9499	1	Plate-Floor, LH
12	3253-4	6	Washer-Lock
13	3217-6	6	Nut-Hex
14	3272-22	16	Pin-Cotter
15	108-5659	4	Pin-Pivot
16	107-9474	2	Hydraulic Cylinder ASM
18	108-5661	2	Pin-Pivot
20	108-5650	2	Pin ASM
21	107-9497	2	Stabilizer Pad ASM
22	107-9496	2	Stabilizer Leg ASM
25	1-803071	2	Screw
26	3230-1	4	Bolt-CARR
27	108-5665	1	Decal-I/O, Valve

--	--	--	--



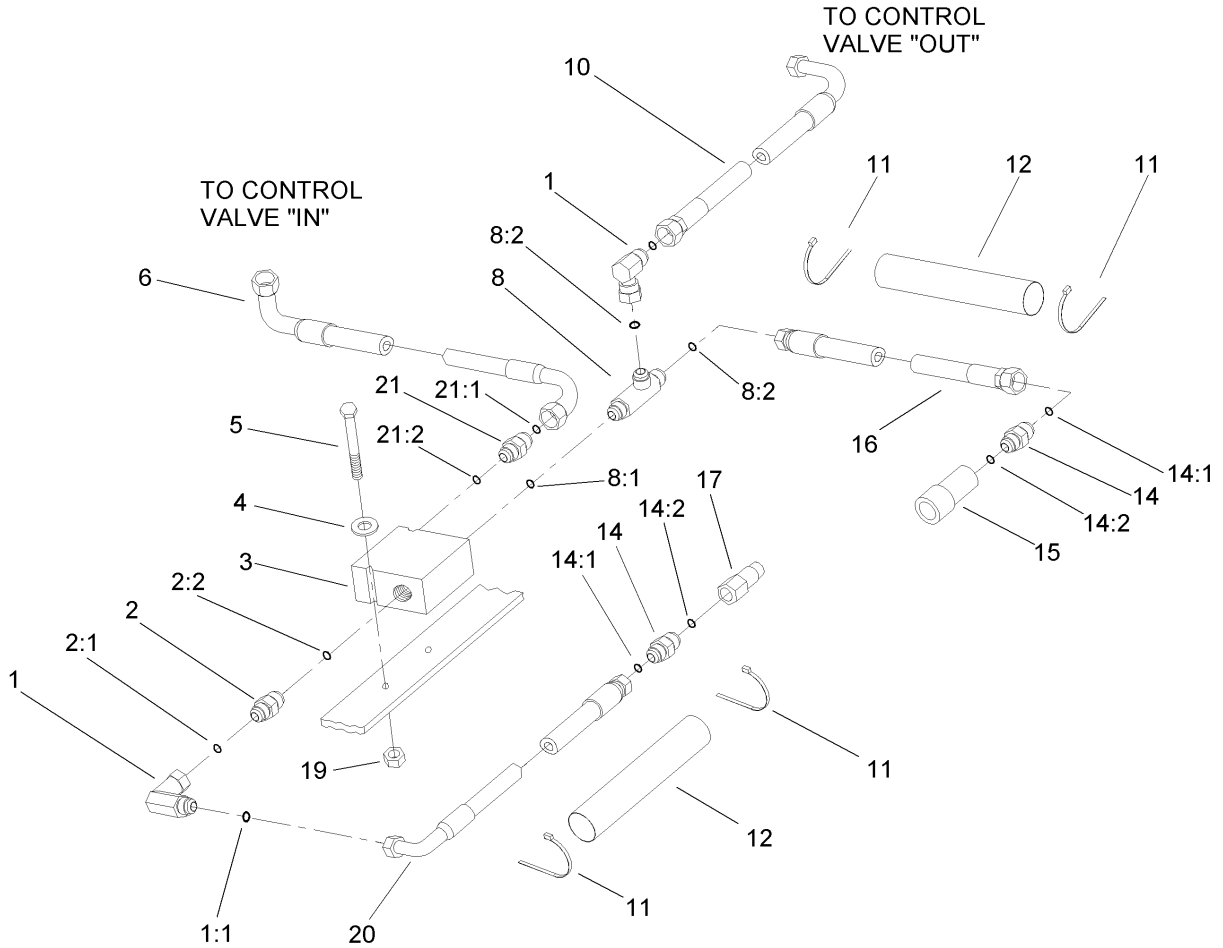








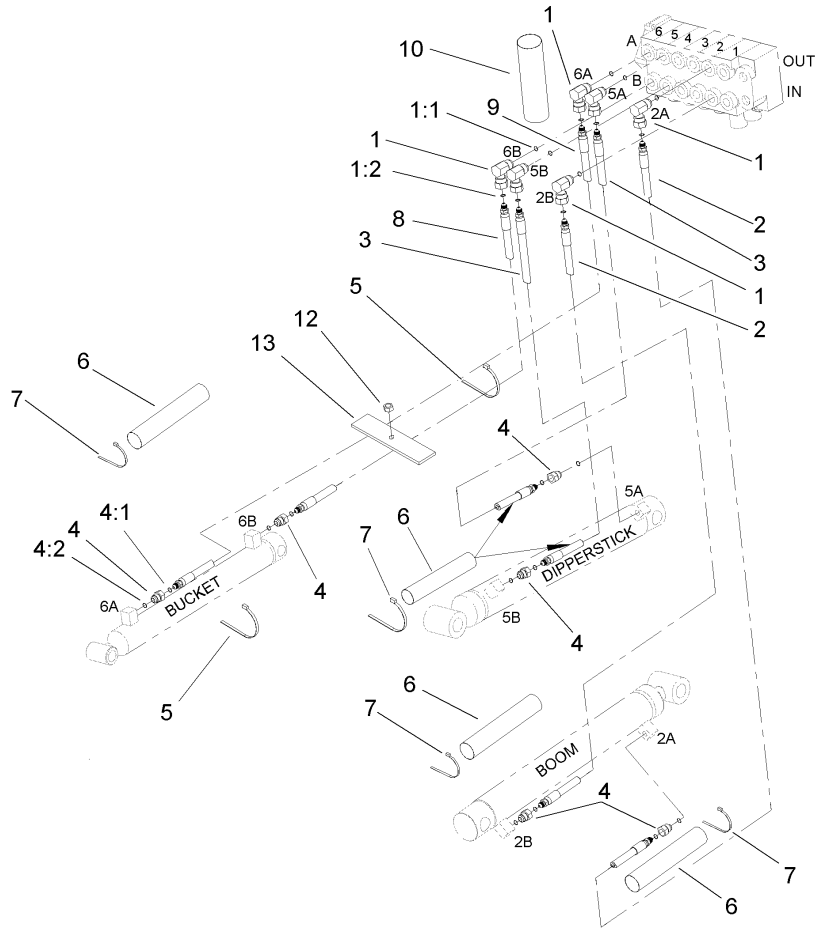




## Auxiliary Hydraulic Connection Assembly

Ref	Part No.	Qty.	Description
1	94-6031	2	Fitting-HYD
1:1	237-30	1	O-Ring
2	340-4	1	Fitting-HYD, Straight
2:1	237-30	1	O-Ring
2:2	237-79	1	O-Ring
3	108-5681	1	Divider-Flow
4	3256-2	2	Washer-Flat
5	321-11	2	Screw-HH
6	108-5676	1	Hydraulic Hose ASM
8	110-0064	1	Fitting-Tee
8:1	237-30	2	O-Ring
8:2	237-42	1	O-Ring
10	108-5677	1	Hydraulic Hose ASM
11	3290-379	4	Tie-Cable
12	108-5668	2	Sleeve-Hose
14	340-6	2	Fitting-HYD, Straight
14:1	237-30	1	O-Ring
14:2	237-80	1	O-Ring
15	104-6134	1	Coupler-Face, Flush
●15:1	105-8396	1	Seal Kit
16	108-5678	1	Hydraulic Hose ASM
17	100-4701	1	Nipple-Connect, Pressure
●17:1	100-6120	1	Seal Kit
19	3296-42	2	Nut-Lock, NI

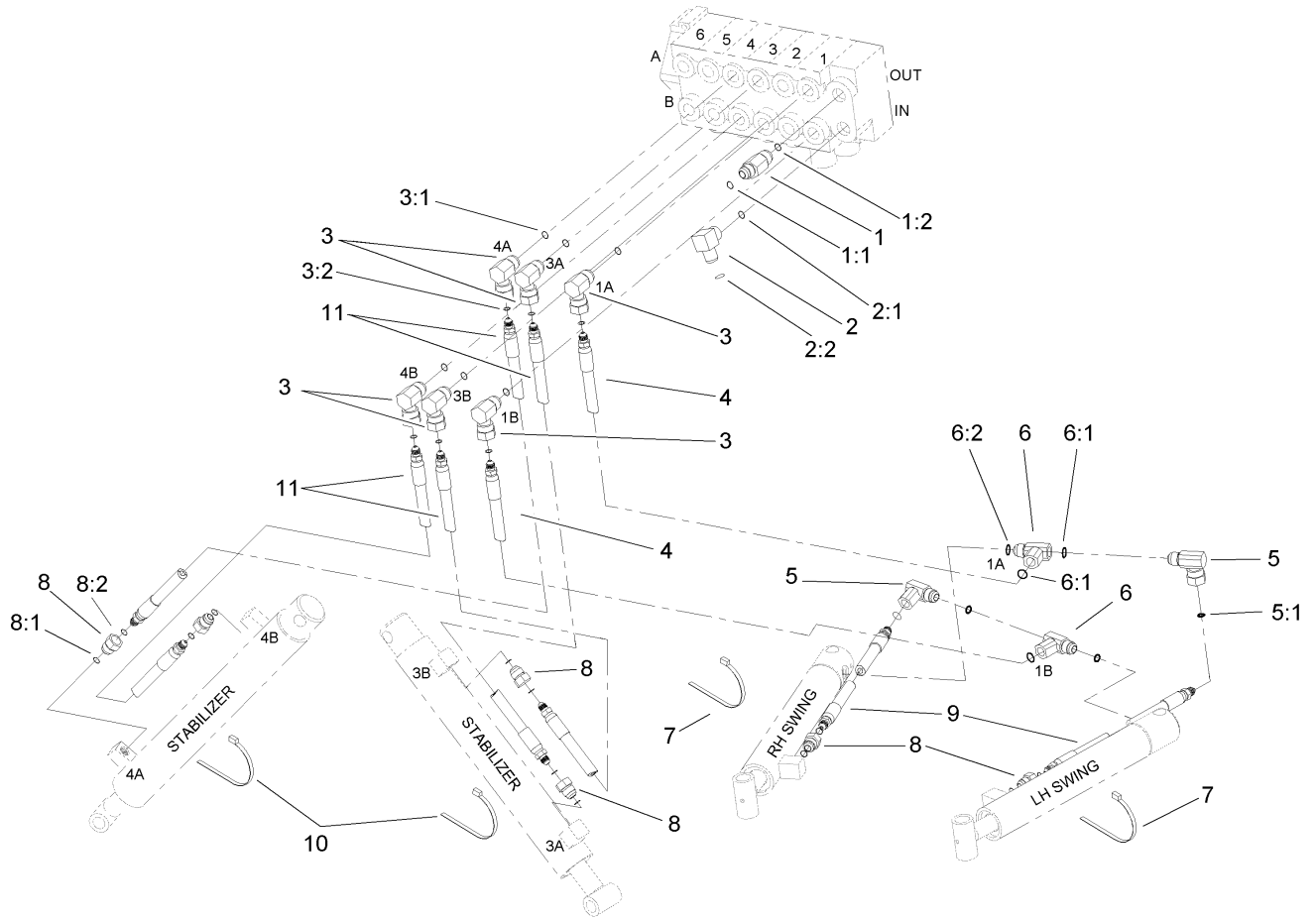
Ref	Part No.	Qty.	Description
20	108-5679	1	Hydraulic Hose ASM
21	340-5	1	Fitting-Straight
21:1	237-42	1	O-Ring
21:2	237-30	1	O-Ring



## Boom, Bucket and Dippersticker Hydraulic Assembly

Ref	Part No.	Qty.	Description
1	108-5687	6	Fitting-Elbow 90
1:1	237-79	1	O-Ring
1:2	237-21	1	O-Ring
2	108-5672	2	Hydraulic Hose ASM
3	108-5675	2	Hydraulic Hose ASM
4	340-1	6	Adapter
4:1	237-21	1	O-Ring
4:2	237-42	1	O-Ring
5	3334-945	2	Tie-Cable
6	108-5667	5	Sleeve-Hose
7	3290-379	4	Tie-Cable
8	108-5673	1	Hydraulic Hose ASM
9	108-5674	1	Hydraulic Hose ASM
10	108-5666	1	Sleeve-Hose
12	3296-4	2	Nut-Lock
13	107-9482	2	Retainer-Hose

--	--



## Stabilizer and Swing Hydraulic Assembly

Ref	Part No.	Qty.	Description
1	340-6	1	Fitting-HYD, Straight
1:1	237-30	1	O-Ring
1:2	237-80	1	O-Ring
2	340-105	1	Fitting-HYD, 90 DEG
2:1	237-80	1	O-Ring
2:2	237-30	1	O-Ring
3	108-5687	6	Fitting-Elbow 90
3:1	237-79	1	O-Ring
3:2	237-21	1	O-Ring
4	108-6508	2	Hose ASM
5	92-2745	2	Fitting-Adaptor
5:1	237-21	1	O-Ring
6	108-5688	2	Fitting-Tee
6:1	237-21	2	O-Ring
6:2	237-42	1	O-Ring
7	3290-379	2	Tie-Cable
8	340-1	6	Adapter
8:1	237-21	1	O-Ring
8:2	237-42	1	O-Ring
9	108-1535	2	Hydraulic Hose ASM
10	3334-945	2	Tie-Cable
11	108-5671	4	Hydraulic Hose ASM


# Attachments and Accessories

## For 23163 - Backhoe, Compact Utility Loader

Product Name	Model/Part
9 Inch Backhoe Bucket .....	110-0065
16 Inch Backhoe Bucket .....	110-0066
Fit Up Kit .....	23161
TX Fit Up Kit .....	23162

# NOTES

