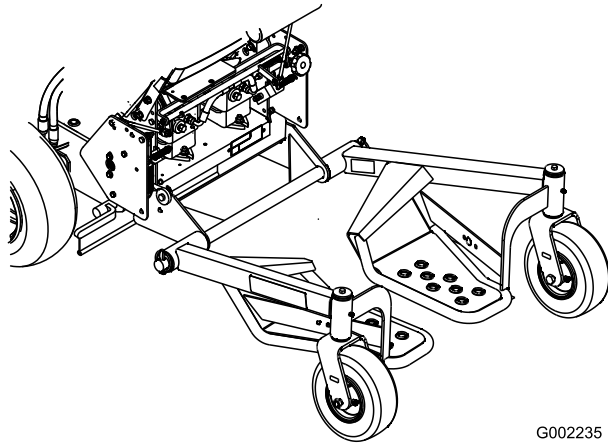




Count on it.

Operator's Manual

Tru Trak[®] Sulky
For Fixed Deck Mid-Size Mowers
Model No. 30109



G002235

Introduction

Read this information carefully to learn how to operate and maintain your product properly and to avoid injury and product damage. You are responsible for operating the product properly and safely.

You may contact Toro directly at www.Toro.com for product and accessory information, help finding a dealer, or to register your product.

Whenever you need service, genuine Toro parts, or additional information, contact an Authorized Service Dealer or Toro Customer Service and have the model and serial numbers of your product ready. Figure 1 identifies the location of the model and serial numbers on the product. Write the numbers in the space provided.

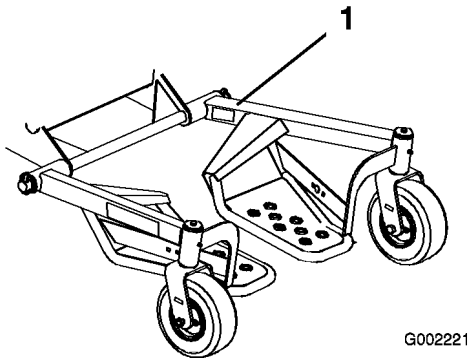


Figure 1

1. Model and serial number location

Model No. _____ Serial No. _____

This manual identifies potential hazards and has safety messages identified by the safety alert symbol (Figure 2), which signals a hazard that may cause serious injury or death if you do not follow the recommended precautions.



Figure 2

1. Safety alert symbol

This manual uses 2 other words to highlight information. **Important** calls attention to special

mechanical information and **Note** emphasizes general information worthy of special attention.

Contents

Introduction	2
Safety	3
Safe Operating Practices.....	3
Setup	4
1 Installing the Axle on a Hydro Drive Mower	5
2 Installing the Axle on a Gear Drive Mower	6
3 Installing the Sulky Assemblies.....	7
4 Adjusting the Handle Height	7
5 Adjusting the Drive Belts on a Gear Drive Machine	7
6 Installing the Lanyard on a Hydro Drive Machine	8
7 Installing the Lanyard on a Gear Drive Machine	8
8 Installing the Lanyard Adjustment Bolts	9
9 Installing the Weight Kit.....	11
10 Adjusting the Parking Brake	11
Operation	12
Positioning the Sulky for Transport	12
Operating Tips	12
Maintenance	13
Checking the Tire Pressure	13
Greasing the Sulky.....	13
Adjusting the Sulky Transport Position	13

Safety

Improper use or maintenance by the operator or owner can result in injury. To reduce the potential for injury, comply with these safety instructions and always pay attention to the safety alert symbol, which means **CAUTION, WARNING, or DANGER**—“personal safety instruction.” Failure to comply with the instruction may result in personal injury or death.

Safe Operating Practices

General Operation

- Do not modify the sulky or use it on non-approved machines.
- Ensure that the sulky is properly attached to the machine and is in good working order prior to use.
- Allow only the machine operator on the sulky.
- Do not allow use of the sulky by untrained operators.
- Use appropriate personal protective apparatus for eyes, ears, feet, hands, and head.
- Practice operating the machine without the sulky until familiar with the controls.
- Practice operation of the machine with sulky attached on large open, level terrain with no obstacles present before use. The sulky will affect the machine operation, especially on slopes, when turning, and when stopping.
- Use caution when riding the sulky over curbs, rocks, roots, or other obstructions.
- Slow down before making turns and use extra caution on rough terrain and on slopes.
- Travel across slopes, avoiding operation on steep slopes.
- Look behind and down before backing up to be sure of a clear path. Use extra care when operating in reverse.
- Dismount and latch the sulky in the transport position when loading and unloading the machine.

Setup

Loose Parts

Use the chart below to verify that all parts have been shipped.

Step	Description	Qty.	Use
1	Axle	1	Install the axle on a hydro drive mower.
	New long spacer (2–3/4 inches)	4	
	Locknut, (3/8 inch)	4	
2	Axle	1	Install the axle on a gear drive mower.
	Flat spacer	2	
	Locknut, (3/8 inch)	4	
	Bolt, (3/8 x 1-3/4 inches)	4	
3	Left sulky assembly	1	Install the sulky assemblies.
	Right sulky assembly	1	
	Lynch pin	2	
	Washer, (1-3/4 inches)	2	
4	No parts required	–	Adjust the handle height.
5	No parts required	–	Adjust the drive belts on a gear drive machine.
6	Lanyard	2	Install the lanyard on a hydro drive machine.
	Shoulder bolt, (5/16 x 1-1/4 inches)	2	
	Washer, (1–3/8 inch O.D.)	2	
	Flange nut, (3/8 inch)	2	
	Locknut, (3/8 inch)	2	
7	Lanyard	2	Install the lanyard on the gear drive machine.
	Shoulder bolt, (5/16 x 1-1/4 inches)	2	
	Washer, (1–3/8 inch O.D.)	2	
	Locknut, (3/8 inch)	2	
8	Carriage bolt, (5/16 x 1 inch)	2	Install the lanyard adjustment bolts.
	Spacer	2	
	Washer, (1 inch O.D.)	2	
	Locknut, (5/16 inch)	2	
9	Weight Kit (if needed)	1 or 2	Install the weight kit.
10	No parts required	–	Adjust the parking brake.

Step

1

Installing the Axle on a Hydro Drive Mower

Parts needed for this step:

1	Axle
4	New long spacer (2-3/4 inches)
4	Locknut, (3/8 inch)

Procedure



Improper installation or application of a sulky can effect the stability and control of the Mid-Sized Mowers, which could cause personal injury or death.

- Weight kits mounted in the rear position need be removed when a sulky is installed.
- Weight Kits installed in the front position are required on Fixed Deck Mid Size mowers that are equipped with a sulky.
- The parking brake must be adjusted, on units equipped with a parking brake, when a sulky is installed.
- The sulky is not recommended on Fixed Deck Mid Size mowers equipped with 32 inch mowers.

1. Disengage the PTO, move the motion control levers to the neutral locked position and set the parking brake.
2. Stop the engine, remove the key, and wait for all moving parts to stop before leaving the operating position.
3. Remove the 4 bolts, spacers, and nuts securing the bottom of the two linkage guards on both sides of the frame (2 bolts and nuts on each side and spacers on the right side) (Figure 3). Save all 4 of the bolts and discard the locknuts.
4. Insert the axle mounting brackets between the linkage guards and the frame (Figure 3).

5. Insert the new long spacers (2-3/4 inches) between the axle mounting brackets and the frame on both sides, lining up the holes (Figure 3).

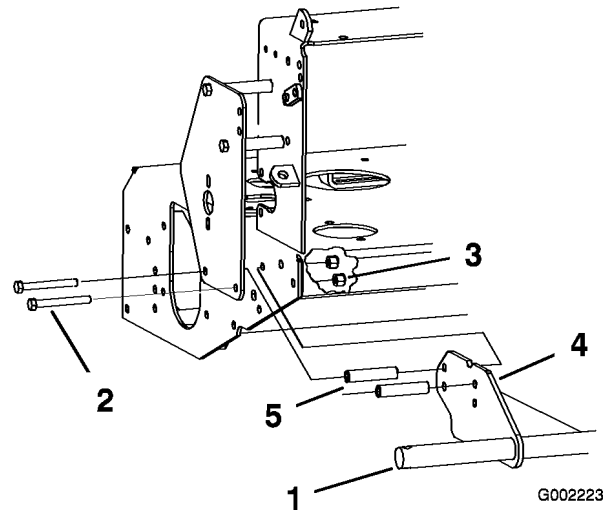


Figure 3

Left side of mower shown

1. Axle
 2. Previously removed bolt, (3/8 x 4 inches)
 3. Locknut, (3/8 inch)
 4. Axle mounting bracket
 5. New long spacer (2-3/4 inches)
6. Install the axle to left side of the machine using 2 bolts previously removed and 2 locknuts (3/8 inch) in the top holes in the axle (Figure 3 and Figure 4).
 7. Using the upper rear hole, install the axle to right side of the machine using 1 previously removed bolt (3/8 x 4 inches), 1 new long spacer (2-3/4 inches), and 1 locknut (3/8 inch) (Figure 4 and Figure 5).
 8. Using the upper front hole, install the axle to right side of the machine using 1 bolt (3/8 x 4-1/2 inch) previously removed, 1 new long spacer (2-3/4 inches), 1 short spacer previously removed on the outside of the guard, and 1 locknut (3/8 inch) (Figure 4 and Figure 5).

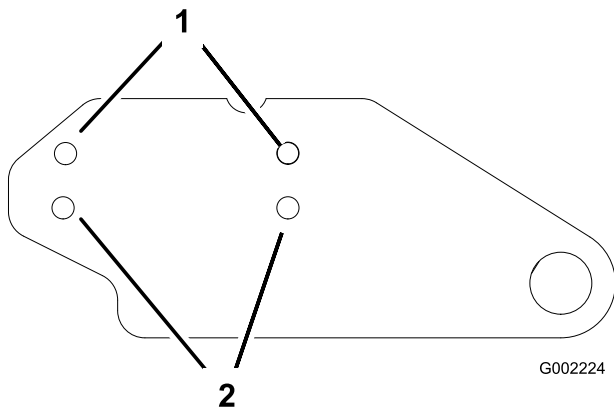


Figure 4

1. For hydro machines 2. For gear drive machines

Step

2

Installing the Axle on a Gear Drive Mower

Parts needed for this step:

1	Axle
2	Flat spacer
4	Locknut, (3/8 inch)
4	Bolt, (3/8 x 1-3/4 inches)

Procedure



Improper installation or application of a sulky can effect the stability and control of the Mid-Sized Mowers, which could cause personal injury or death.

- Weight kits mounted in the rear position need be removed when a sulky is installed.
- Weight Kits installed in the front position are required on Fixed Deck Mid Size mowers that are equipped with a sulky.
- The parking brake must be adjusted, on units equipped with a parking brake, when a sulky is installed.
- The sulky is not recommended on Fixed Deck Mid Size mowers equipped with 32 inch mowers.

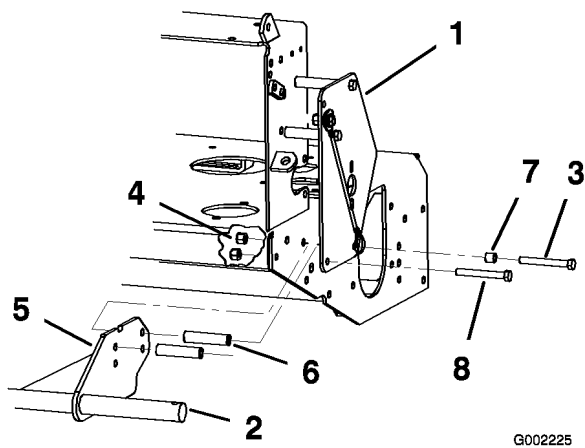


Figure 5

- | | |
|--|---|
| 1. Linkage guard | 5. Axle mounting bracket |
| 2. Axle | 6. New long spacer (2-3/4 inches) |
| 3. Previously removed bolt, (3/8 x 4-1/2 inches) | 7. Short spacer |
| 4. Locknut, (3/8 inch) | 8. Previously removed bolt (3/8 x 4 inches) |

1. Disengage the PTO, move the motion control levers to the neutral locked position and set the parking brake.
2. Stop the engine, remove the key, and wait for all moving parts to stop before leaving the operating position.
3. Insert the axle mounting brackets between the pulley guards and the frame (Figure 6).
4. Insert the flat spacers between the axle mounting brackets and the frame, lining up the holes (Figure 6).
5. Using the bottom holes in the axle mounting bracket, install the 4 bolts (3/8 x 1-1/4 inches)

and locknuts (3/8 inch) supplied with the sulky, secure the axle and the spacers as illustrated in Figure 4 and Figure 6.

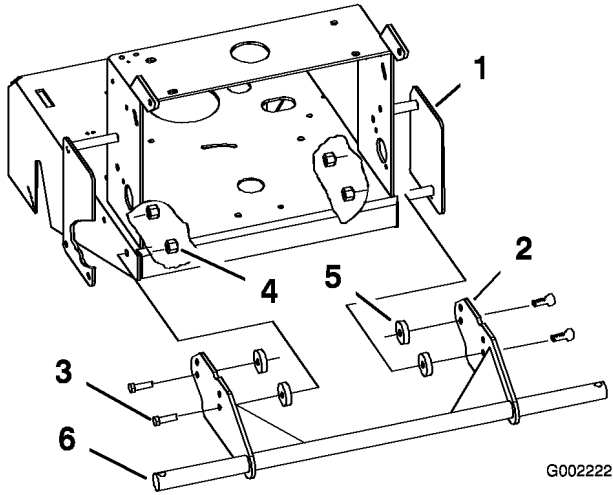


Figure 6

- | | |
|-------------------------------|------------------------|
| 1. Linkage guard | 4. Locknut, (3/8 inch) |
| 2. Axle mounting bracket | 5. Flat spacer |
| 3. Bolt, (3/8 x 1-1/4 inches) | 6. Axle |

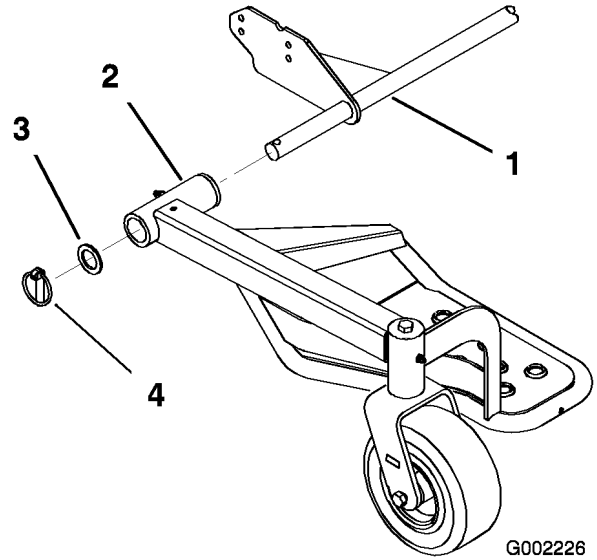


Figure 7

Left side shown

- | | |
|-------------------|---------------------------|
| 1. Axle | 3. Washer, (1-3/4 inches) |
| 2. Sulky assembly | 4. Lynch pin |

Step **3**

Installing the Sulky Assemblies

Parts needed for this step:

1	Left sulky assembly
1	Right sulky assembly
2	Lynch pin
2	Washer, (1-3/4 inches)

Procedure

- Slide the mounting tube on each sulky assembly over the ends of the axle with the foot rests towards the inside (Figure 7).
- Secure the sulky assemblies using a washer (1-3/4 inch) and lynch pin on each side (Figure 7).

- Grease the sulky; refer to Greasing the Sulky.

Step **4**

Adjusting the Handle Height

No Parts Required

Procedure

Because the sulky raises you several inches off of the ground, adjust the handle height to accommodate the user on the sulky comfortably. Refer to the mower *Operator's Manual* for more information on changing the handle height.

Step

5

Adjusting the Drive Belts on a Gear Drive Machine

No Parts Required

Procedure

Because the sulky increases the weight of the machine, check the drive belts for adjustments. Refer to the mower *Operator's Manual* for more information on adjusting the drive belts.

Step

6

Installing the Lanyard on a Hydro Drive Machine

Parts needed for this step:

2	Lanyard
2	Shoulder bolt, (5/16 x 1-1/4 inches)
2	Washer, (1-3/8 inch O.D.)
2	Flange nut, (3/8 inch)
2	Locknut, (3/8 inch)

Procedure

1. Inspect the linkage guard and determine if there is an extra hole in the guard below the upper rear hole. Refer to Figure 8 for the correct location. If there is no existing hole, perform items 2 and 3 for drilling a hole.
If a hole exists, proceed to item 4 of this procedure.
2. Measure 1 inch (25 mm) directly under the existing hole in the linkage guard.
3. Mark the location and drill a 11/32 inch hole into the linkage guard (Figure 8).

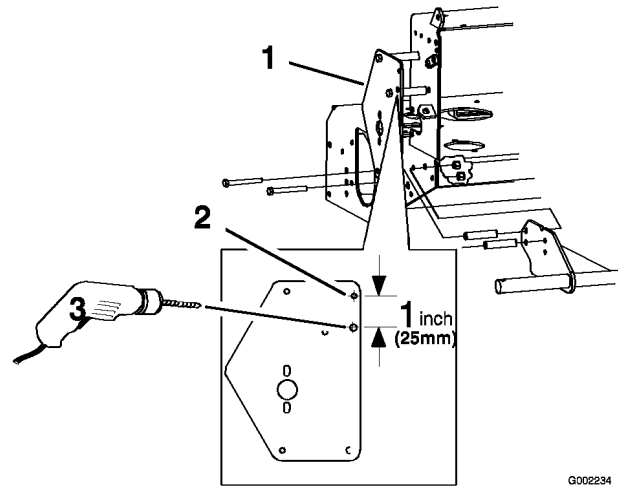


Figure 8

1. Linkage guard
2. Upper rear hole
3. Drill a 11/32 inch hole here

4. Drill the hole for the opposite side.
5. Install the lanyard to the rear hole in the linkage guard as shown in Figure 9. Secure the lanyard with 1 shoulder bolt, 1 flange nut, 1 washer (1-3/8 inches O.D.) and 1 locknut (3/8 inch) (Figure 9).

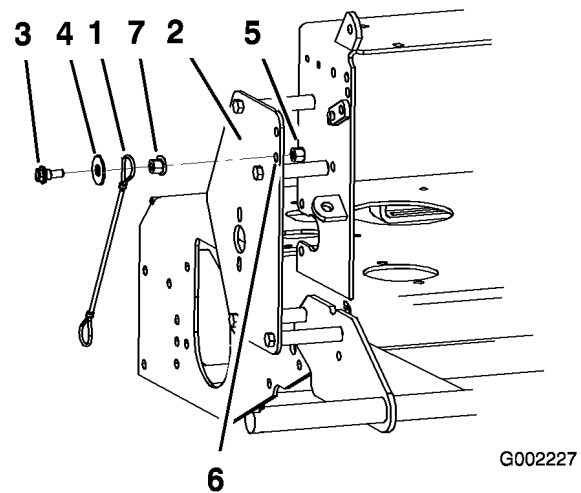


Figure 9

1. Lanyard
2. Linkage guard
3. Shoulder Bolt
4. Washer, (1-3/8 inches O.D.)
5. Locknut, (5/16 inch)
6. Hole to install lanyard
7. Flange nut

6. Install the other lanyard on the opposite side using the previous instructions.

Step

7

Installing the Lanyard on a Gear Drive Machine

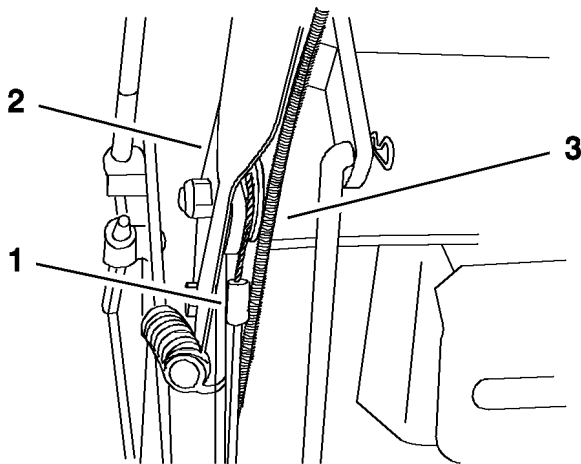
Parts needed for this step:

2	Lanyard
2	Shoulder bolt, (5/16 x 1-1/4 inches)
2	Washer, (1-3/8 inch O.D.)
2	Locknut, (3/8 inch)

Procedure

1. Remove the bolt and nut in the upper hole where the handle is connected to the frame.

Note: The lanyard on the left side needs to be between the frame and the throttle cable (Figure 10).

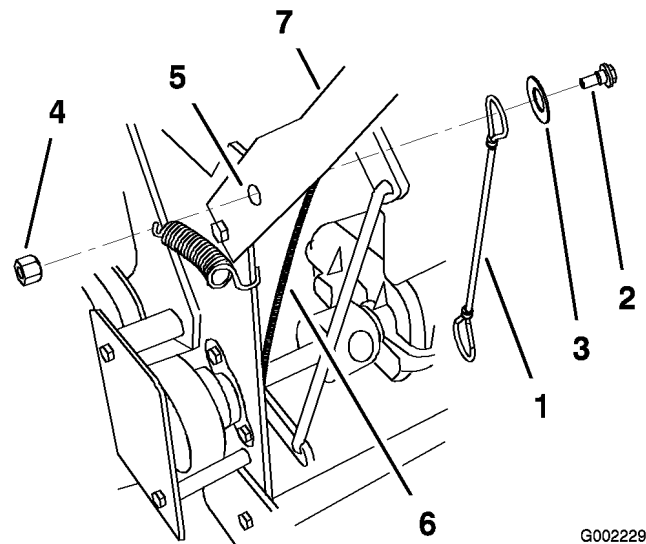


G002228

Figure 10

1. Lanyard
2. Handle
3. Throttle cable

2. Install the lanyard with 1 shoulder bolt, 1 washer (1-3/8 inches O.D.) and 1 locknut (3/8 inch).



G002229

Figure 11

1. Lanyard
2. Shoulder Bolt
3. Washer, (1-3/8 inches O.D.)
4. Locknut, (5/16 inch)
5. Upper hole
6. Throttle cable
7. Handle

3. Install the other lanyard on the opposite side using the previous instructions.

Step

8

Installing the Lanyard Adjustment Bolts

Parts needed for this step:

2	Carriage bolt, (5/16 x 1 inch)
2	Spacer
2	Washer, (1 inch O.D.)
2	Locknut, (5/16 inch)

Procedure

1. Determine the handle height position. Refer to the mower *Operator's Manual* for the handle height position.
2. Locate the three adjustment holes in the sulky assemblies (Figure 12). The hole closest to the sulky wheel is used when the handle is in the high position. The middle hole is for the middle handle height position and the front hole is for the low handle height position.

3. Install the nut (5/16 inch), washer (1 inch O.D), spacer and bolt (5/16 x 1 inch) into the correct hole location determined above (Figure 12).
4. Install the other adjustment bolt on the opposite side.

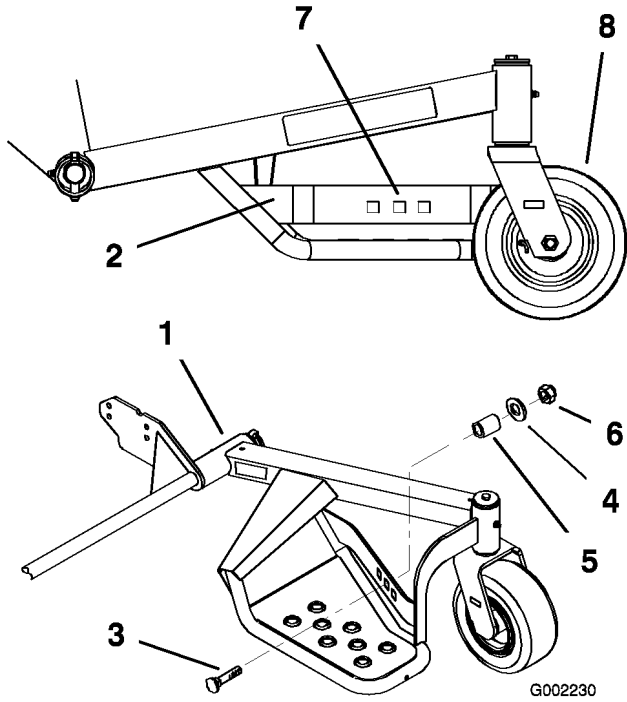


Figure 12

- | | |
|----------------------------------|-------------------------|
| 1. Sulky assembly | 5. Spacer |
| 2. Side support | 6. Locknut, (5/16 inch) |
| 3. Carriage bolt,(5/16 x 1 inch) | 7. Center hole |
| 4. Washer, (1 inch O.D.) | 8. Sulky wheel |

Step

9

Installing the Weight Kit

Parts needed for this step:

1 or 2	Weight Kit (if needed)
--------	------------------------

Procedure



Use the correct weight kits when the sulky is installed or personal injury or death could occur.

- Never operate the machine with out recommended front weight kits.
- Do not use the rear weight kit when a sulky is installed.

Due to the added weight of the sulky and the operator at the rear of the machine, certain machines require additional front weight kits installed in order to meet safety standards.

Important: If the sulky and axle are removed from the machine, remove any weights for use with the sulky.

Important: Do not use rear weight kit when the sulky is installed.

Use the following table to determine which models require front weights and the number of front weight kits needed when installing a sulky. Front weight kits are available through an Authorized Service Dealer. Refer to the weight kit for the correct procedures to install the weight.

Number of Weight Kits Required when a Sulky is installed.			
		All 2005 and Earlier Models	2006 and After Pistol Grip, Hydro Models Only
Mower Deck Size	32 inch	Do not use a sulky on 32 inch mowers.	Do not use a sulky on 32 inch mowers.
	36 inch	2	1
	40 inch	No model available	2
	48 inch	1	1

Step

10

Adjusting the Parking Brake

No Parts Required

Procedure

After installing the sulky, adjust the machine's parking brake to compensate for the increased machine weight.

Operation

Note: Determine the left and right sides of the machine from the normal operating position.

Positioning the Sulky for Transport

Before placing the machine on a trailer, lift each sulky assembly up and secure them with the lanyards (Figure 13). This will keep the sulky from bouncing during transport and make the machine more compact.

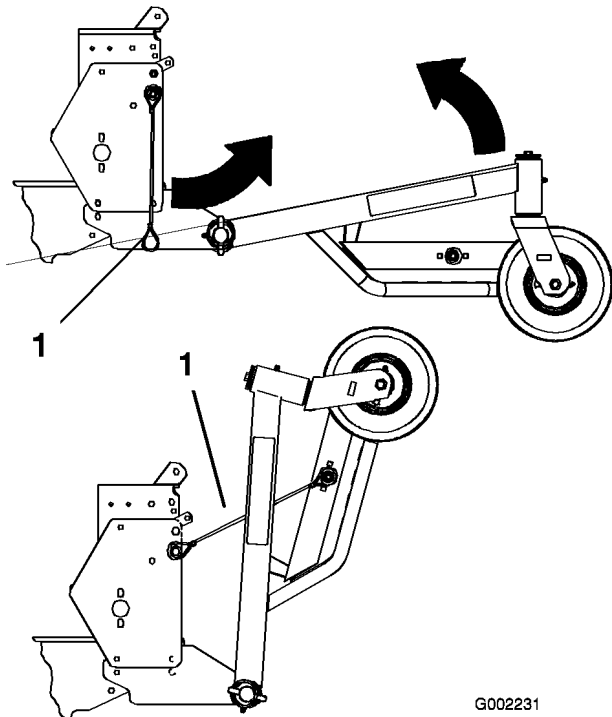


Figure 13

1. Lanyard

Operating Tips

Learning to Drive

Drive slowly and take time to learn how the sulky moves when using it for the first time.

Turning with a Sulky

Use care when turning to ensure that you do not swing yourself and the sulky into obstacles.

When turning, lean forward and toward the direction of the turn to help in keeping your balance.

Adjusting the Wheel Drive Traction

If your machine is a gear drive, pistol grip machine, you may need to adjust the wheel drive tension; refer to your machine *Operator's Manual*.

Maintenance

Checking the Tire Pressure

Ensure that the caster wheel tires are filled with air to 50 psi (345 kPa) every 8 operating hours or before each use.

Greasing the Sulky

Grease all grease fittings every 25 operating hours and immediately after every washing.

Grease type: General-purpose grease.

1. Clean the grease fittings with a rag.
2. Connect a grease gun to each fitting.
3. Pump grease into the fittings until grease begins to ooze out of the bearings.
4. Wipe up any excess grease.

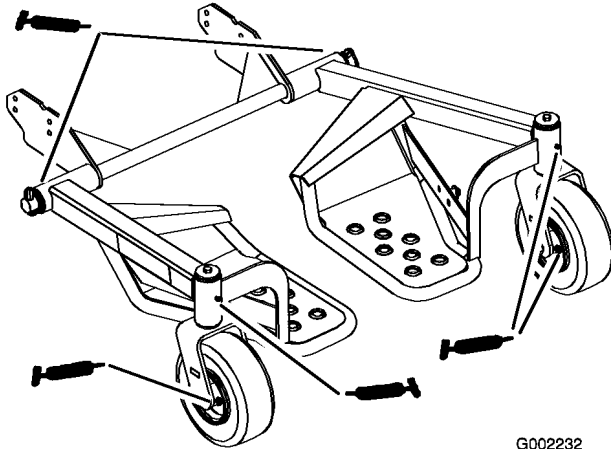


Figure 14

the sulky wheel is used when the handle is in the high position. The middle hole is for the middle handle height position and the front hole is for the low handle height position.

4. Install the nut (5/16 inch), small washer, spacer, lanyard and bolt (5/16 x 1 inch) into the desired hole (Figure 15).

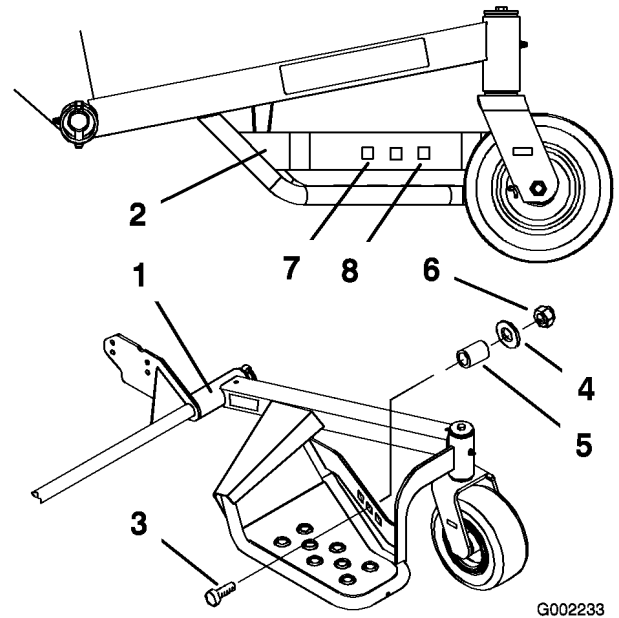


Figure 15

Adjusting the Sulky Transport Position

The sulky transport position can be raised or lowered by using the three different holes in the sulky side support.

1. Remove the nut (5/16 inch), small washer, spacer, lanyard and bolt (5/16 x 1-1/4 inches) from the sulky side support (Figure 15).
2. Determine the handle height position. Refer to the *Operator's Manual* for the handle height position.
3. Locate the three adjustment holes in the sulky assemblies (Figure 15). The hole closest to



Count on it.