



Enclosed Boom Multi-Pro[®] Turf Sprayers and Workman[®] 200 Spray System

Model No. 41355 - 260000001 and up.

Parts Catalog

Ordering Replacement Parts

To order replacement parts, please supply the part number, the quantity, and the description of each part desired.

Understanding Reference Numbers

Each identified part in an illustration has a reference number. The reference number for a part also appears in the parts list, along with other information about the part.

This catalog uses two special reference number formats, one to indicate parts in a service assembly and another to indicate the quantity of a given part in an illustration.

Service Assembly Reference Numbers

Parts in service assemblies have reference numbers in the form a:b. The a represents the reference number of the entire service assembly and the b represents a sequential number unique to each part within the service assembly.

For example, a wheel assembly might be identified by reference number 6, the tire by 6:1, the valve by 6:2, and the wheel by 6:3. When you order the assembly identified by reference number 6, you receive all parts identified by reference numbers 6:1, 6:2, and 6:3. However, you may also order any part individually. Reference numbers of this type appear in illustrations and in part lists.

Reference Numbers Indicating Quantity

In an illustration, if a reference number indicates more than one part, the reference number has the form nX y. The n represents the quantity of the part, the X is the multiplication symbol, and the y represents the reference number.

For example, in an illustration, the reference number 2X 37 means that two of the parts identified by reference number 37 are indicated.

Contents

Description	Page	Description	Page
Covered Boom Drift Seal Assembly 5	Actuator Assembly No. 94-8556 9
Covered Boom Assembly 3	Nozzle Assembly 10
Covered Boom Plumbing Assembly 6	Flow Indicator Assembly 11
Center Boom Assembly No. 94-8645 7	Boom Flow Indicator Assembly No. 100-7077 12
Extension Boom Assemblies No. 94-8646 and No. 94-8647 8	Center Flow Indicator Assembly No. 100-7078 13

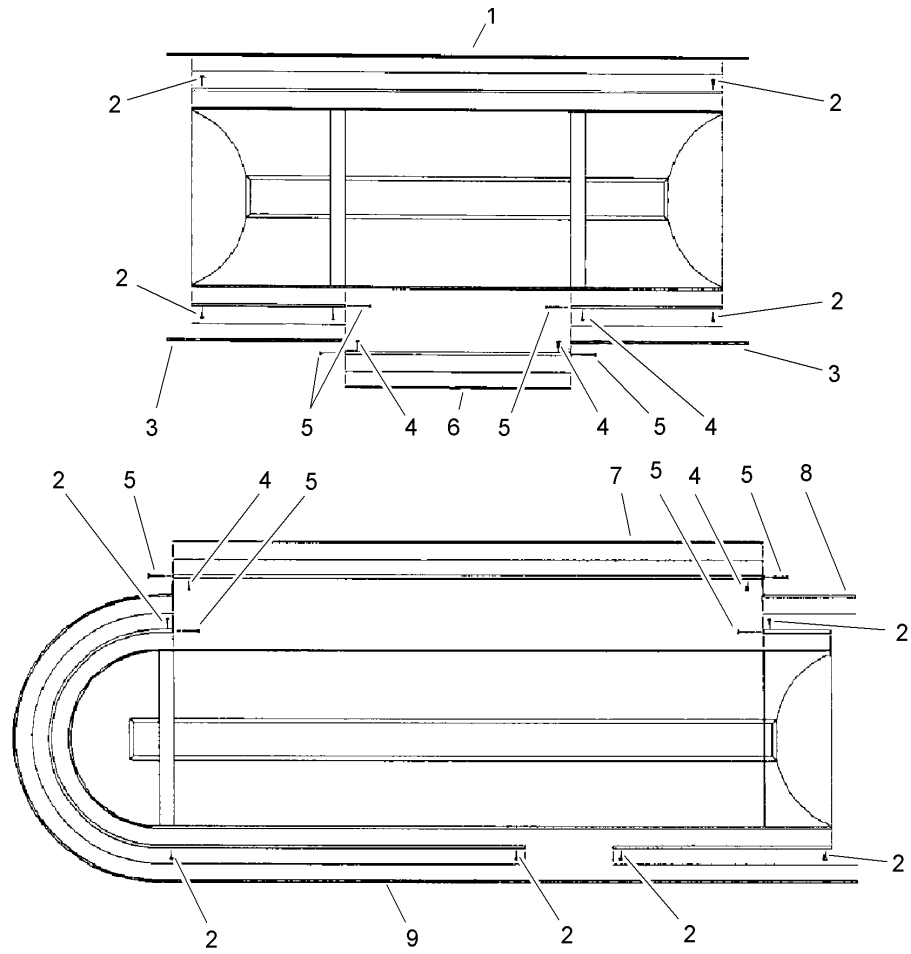
Part Description Abbreviations

Part descriptions in this catalog may include the following abbreviations.

AR. as required	INC. incorporated
ASM. assembly	LH. left hand
BBC. blade brake clutch	NI. nylon insert
CARR. carriage	NPTF. national pipe thread fine
DEG. degrees	PFH. phillips flat head
EXT. external	PPH. phillips pan head
FH. flat head	PPHTF. phillips pan head thread forming
GA. gauge	PRH. phillips round head
HF. hex flange	PTH. phillips truss head
HH. hex head	PTO. power-take-off
HHF. hex head flange	RH. right hand
HHFTF. hex head flange thread forming	ROPS. roll-over-protection-system
HJ. hex jam	SFH. slotted fillister head
HLH. hex lag head	SHH. slotted hex head
HOC. height-of-cut	SHWH. slotted hex washer head
HSBH. hex socket button head	SPH. slotted pan head
HSFH. hex socket flat head	SQH. square head
HSH. hex socket head	SRH. slotted round head
HWH. hex washer head	STD. standard
HWHTF. hex washer head thread forming	TAP. self tapping
HYD. hydraulic	TTH. torx truss head

Footnotes

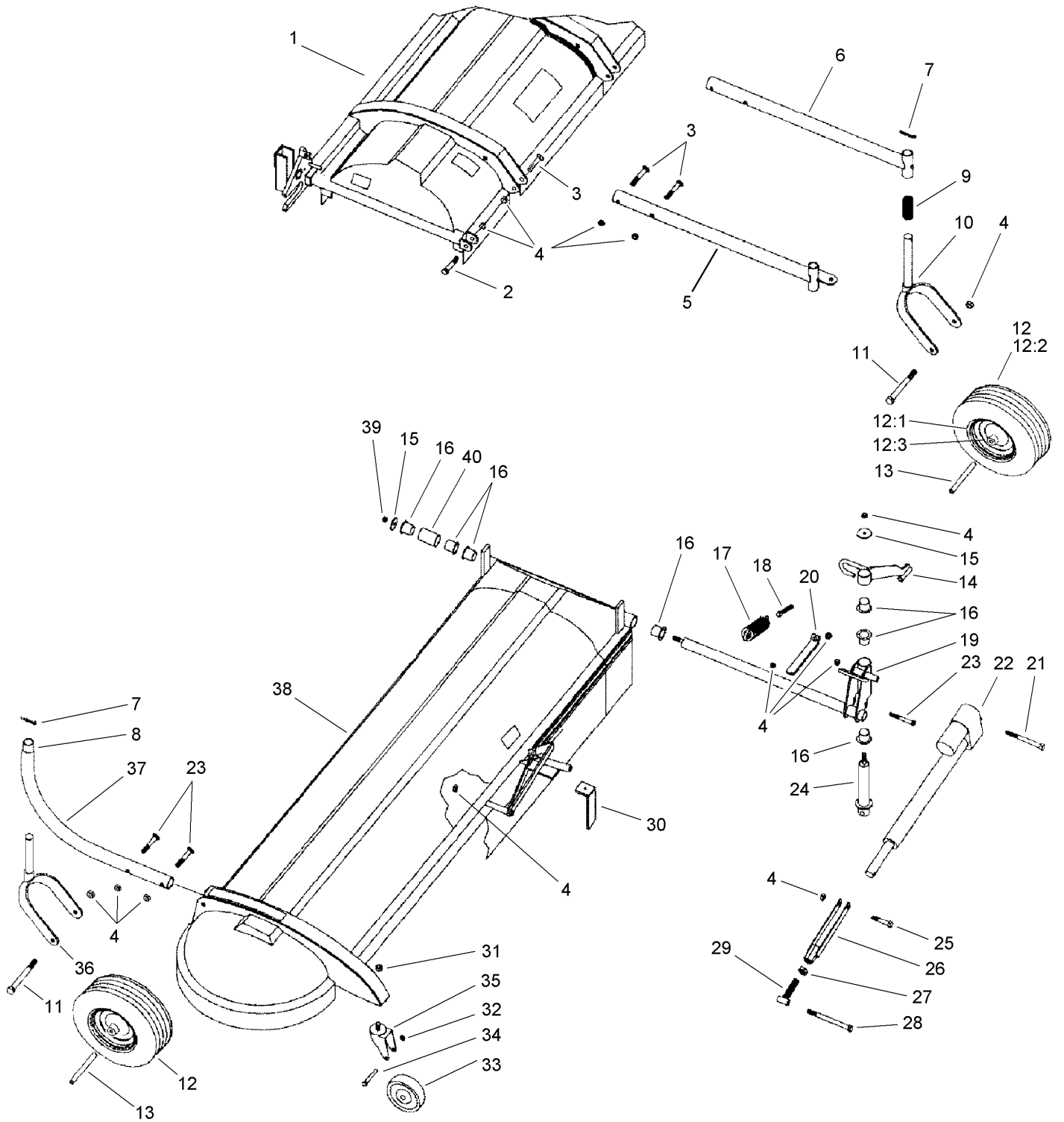
- ❶ Not illustrated



Covered Boom Drift Seal Assembly

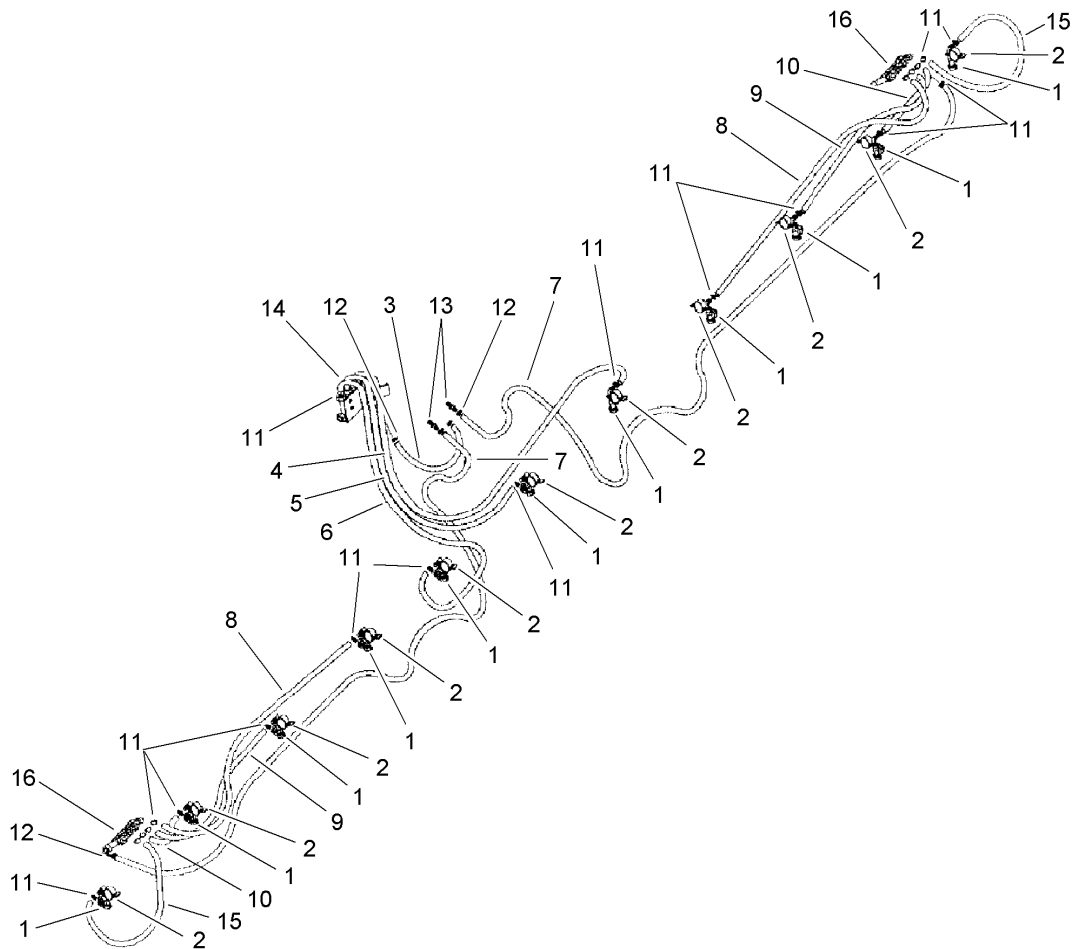
Ref	Part No.	Qty.	Description
1	94-8660	1	Seal-Drift
2	94-8663	60	Screw
3	94-8662	2	Seal-Drift
4	3261-20	25	Rivet
5	94-8666	12	Screw
6	94-8661	1	Seal-Drift
7	94-8658	2	Seal-Drift
8	94-8659	2	Seal-Drift
9	94-8657	2	Seal-Drift

Covered Boom Assembly



Covered Boom Assembly

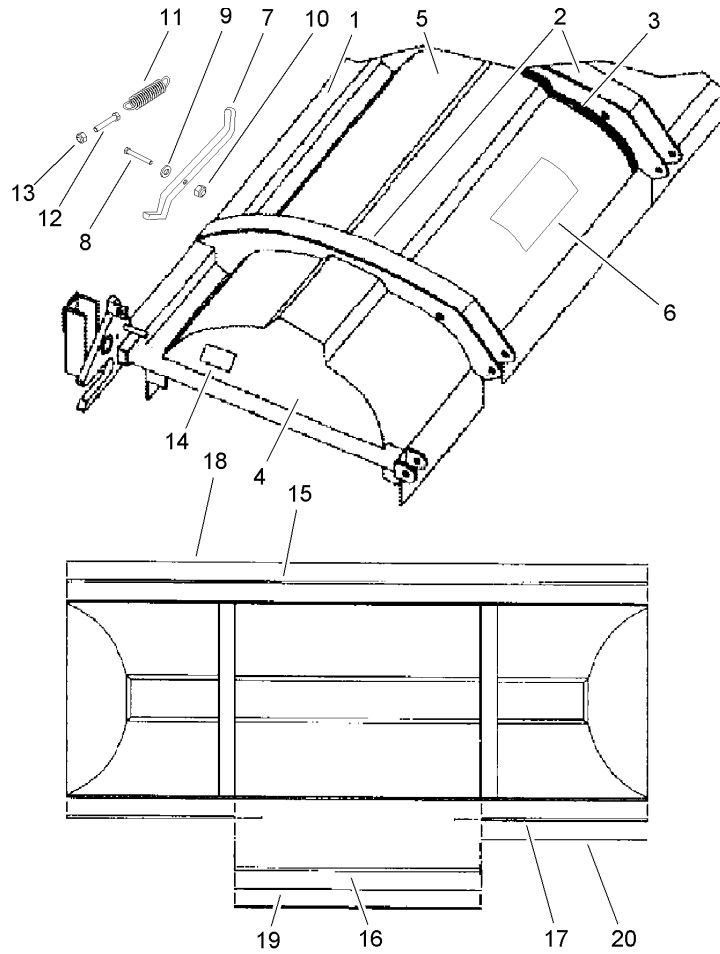
Ref	Part No.	Qty.	Description				
1	94-8645	1	Boom Center Section ASM				
2	325-10	2	Screw-HH				
3	3233-6	6	Screw-CARR				
4	32146-13	34	Nut-Lock				
5	94-8667	1	Mount-Castor				
6	94-8655	1	Mount-Castor				
7	3272-23	4	Pin-Cotter				
8	302-19	4	Fitting-Grease				
9	94-8709	2	Spring-Compression				
10	94-8656	2	Fork-Castor				
11	325-36	4	Screw-HH				
12	94-8693	4	Wheel ASM				
12:1	94-8694	1	Rim				
12:2	94-8695	1	Tire				
12:3	94-8696	1	Bushing				
13	94-8697	4	Tube-Bearing, Wheel				
14	94-8681	1	Support-Pivot, Left				
14	94-8682	1	Support-Pivot, Right				
15	94-8664	4	Washer				
16	94-8650	14	Bushing				
17	94-8675	2	Spring-Extension, Breakaway				
18	95-2061	2	Screw-HH Cap				
19	94-8678	1	Pivot-Left				
19	94-8679	1	Pivot-Right				
20	94-8690	2	Bracket-Pushout, Boom				
21	325-19	2	Screw-HH				
22	94-8556	2	Actuator-Electric				
23	325-18	6	Screw-HH				
24	94-8680	2	Pin-Pivot				
25	325-8	2	Screw-HH				
26	94-8648	2	Link-Adjustment, Actuator				
27	3218-7	2	Nut-Jam				
28	100-7090	2	Screw-HH				
29	94-8651	2	Adjuster-T				
30	95-2004	2	Stop-Seal, Drift				
31	3296-48	2	Nut-Lock, NI				
32	3296-59	2	Nut-Lock, NI				
33	94-8677	2	Wheel				
34	323-12	2	Screw-HH				
35	94-8652	2	Fork-Castor				
36	94-8654	2	Fork-Castor				
37	94-8653	2	Mount-Castor				
38	94-8647	1	Boom-Left				
38	94-8646	1	Boom-Right				
39	3218-18	2	Nut-Jam				
40	94-8683	2	Collar-Retainer, Breakaway				
①99	106-1397	2	Harness-Extension				
①99	110-1650	2	Harness-Extension				
①99	100-1535	2	Switch				
①99	325-12	6	Screw-HH				



Covered Boom Plumbing Assembly

Ref	Part No.	Qty.	Description
1	100-6853	11	Nozzle Body ASM
2	40999	11	Clamp ASM
3	94-8778	1	Hose
4	100-6856	2	Hose-Center Boom, Left
5	100-6855	1	Hose-Center Boom, Center
6	100-6854	1	Hose-Center Boom, Right
7	94-8782	2	Hose
8	100-6857	2	Hose-EXT., Boom Feed
9	100-6858	2	Hose-EXT., Boom Feed
10	100-6859	2	Hose-EXT., Boom Feed
11	96609	22	Clamp-Hose
12	2412-36	5	Clamp-Hose
13	95-2073	2	Connector-Hose
14	100-7078	1	Flow Indicator ASM, Center Section
15	100-6860	2	Hose-EXT., Boom Feed
16	100-7077	2	Flow Indicator ASM, Boom EXT
①99	2412-108	4	Clamp-Worm
①99	94-8773	2	Hose
①99	94-8775	2	Connector-Hose
①99	94-7195	2	Cap

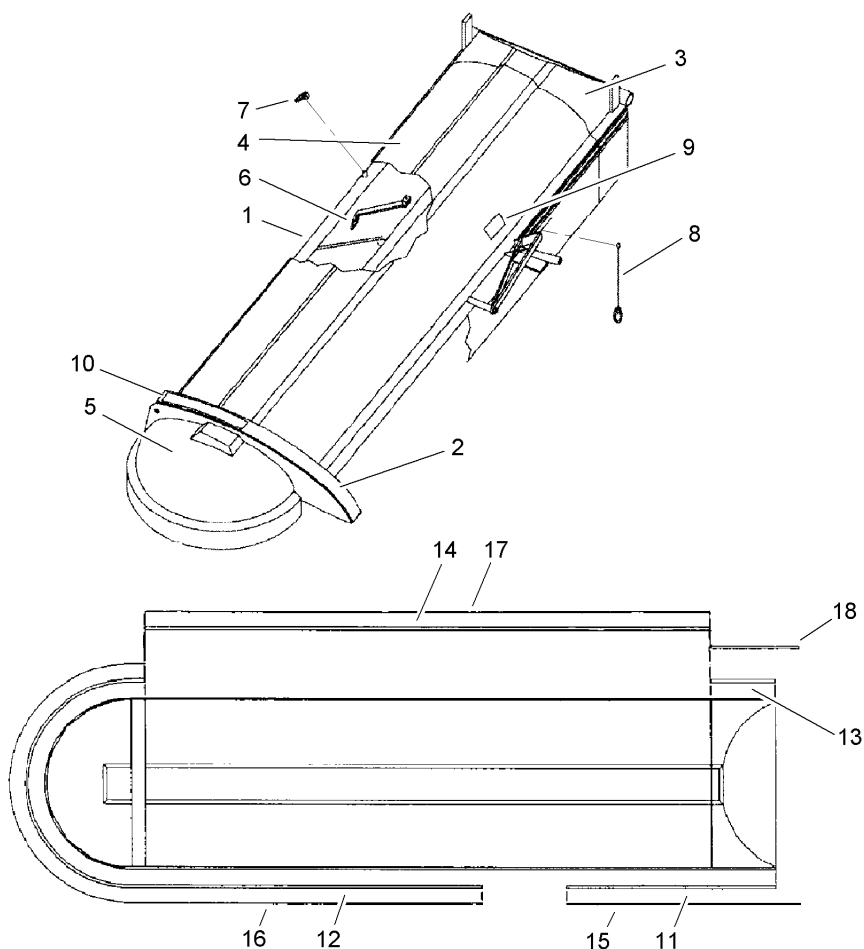
--	--	--	--



Center Boom Assembly No. 94-8645

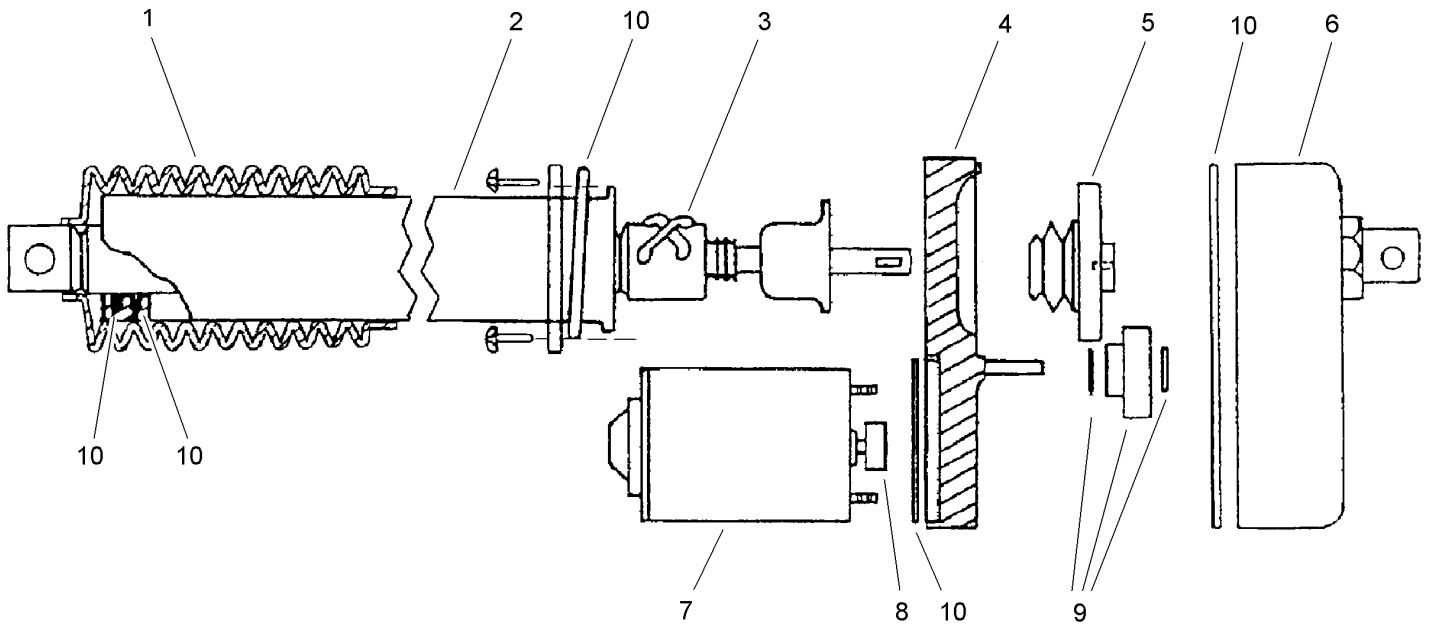
Ref	Part No.	Qty.	Description
1	95-2058	1	Frame-Main, Center
2	94-8711	2	Strip-Bumper, Center Section
3	95-2080	2	Seal-Joint
4	94-8698	1	Cap-Shroud, Center (Left)
4	94-8699	1	Cap-Shroud, Center (Right)
5	94-8687	1	Shroud-Center
6	62-5550	1	Decal-Logo
7	94-8649	2	Latch-Breakaway
8	323-9	2	Screw-HH
9	3256-4	6	Washer-Flat
10	3296-59	2	Nut-Lock, NI
11	94-8675	2	Spring-Extension, Breakaway
12	95-2061	4	Screw-HH Cap
13	32146-13	2	Nut-Lock
14	94-8701	2	Decal-Pinch Point Warning
15	95-2001	1	Retainer-Seal
16	95-2002	1	Retainer-Seal
17	95-2003	2	Retainer-Seal
18	94-8768	1	Insert-Vinyl, Red
19	94-8769	1	Insert-Vinyl, Red
20	94-8770	2	Insert-Vinyl, Red
①99	32144-74	2	Screw-TAP (Used With Joint Seal)

--	--	--	--



Extension Boom Assemblies No. 94-8646 and No. 94-8647

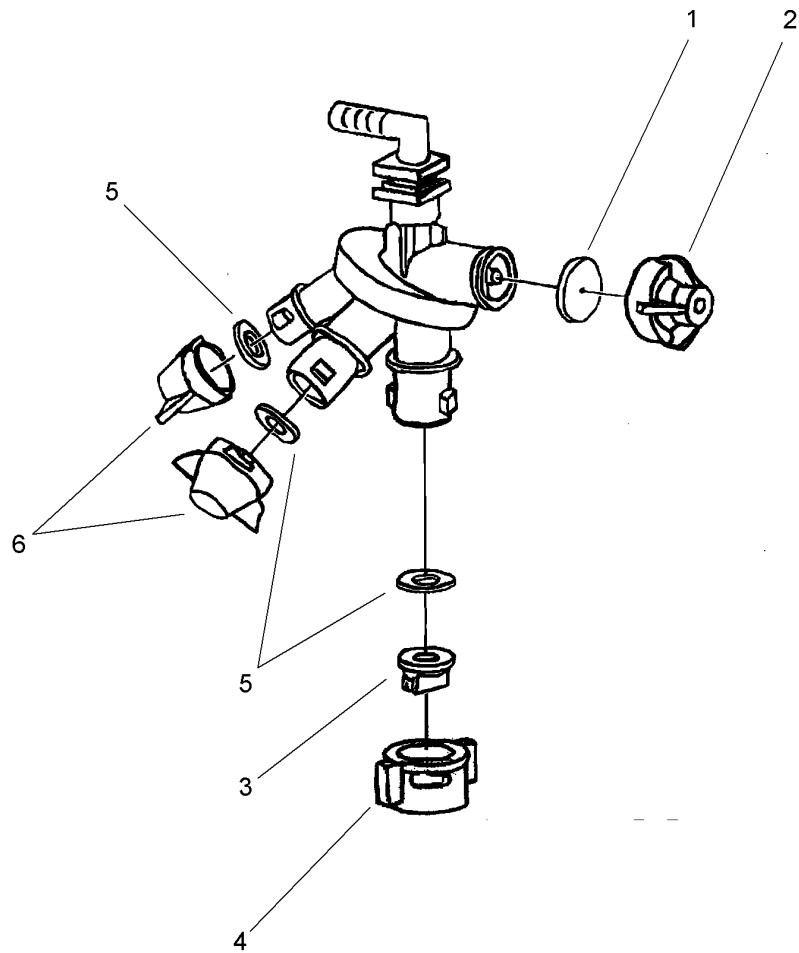
Ref	Part No.	Qty.	Description
1	95-2060	1	Frame-Main, Left
1	95-2059	1	Frame-Main, Right
2	94-8712	1	Strip-Bumper, Boom Extension
3	94-8684	1	Cap-Inner Shroud, Left
3	94-9685	1	Cap-Inner Shroud, Right
4	94-8686	1	Shroud-Boom, Left
4	95-2130	1	Shroud-Boom, Right
5	94-8688	1	Cap-Shroud, Boom (Left)
5	94-8689	1	Cap-Shroud, Boom (Right)
6	94-8668	1	Hood Support ASM
7	92-1248?	2	Pin-Quick (F/W Retainer Ring)
8	94-8708	1	Cable-W/Clips
9	94-8701	1	Decal-Pinch Point Warning
10	94-8702	1	Decal-Forward Fold Instruction
11	94-8797	1	Retainer-Seal
12	94-8798	1	Retainer-Seal, Left
12	95-2131	1	Retainer-Seal, Right
13	95-2000	1	Retainer-Seal
14	94-8799	1	Retainer-Seal
15	94-8670	1	Insert-Vinyl, Red
16	94-8765	1	Insert-Vinyl, Red
17	94-8766	1	Insert-Vinyl, Red
18	94-8767	1	Insert-Vinyl, Red
● 99	95-2129	1	Strip-Bumper, Boom Extension



Actuator Assembly No. 94-8556

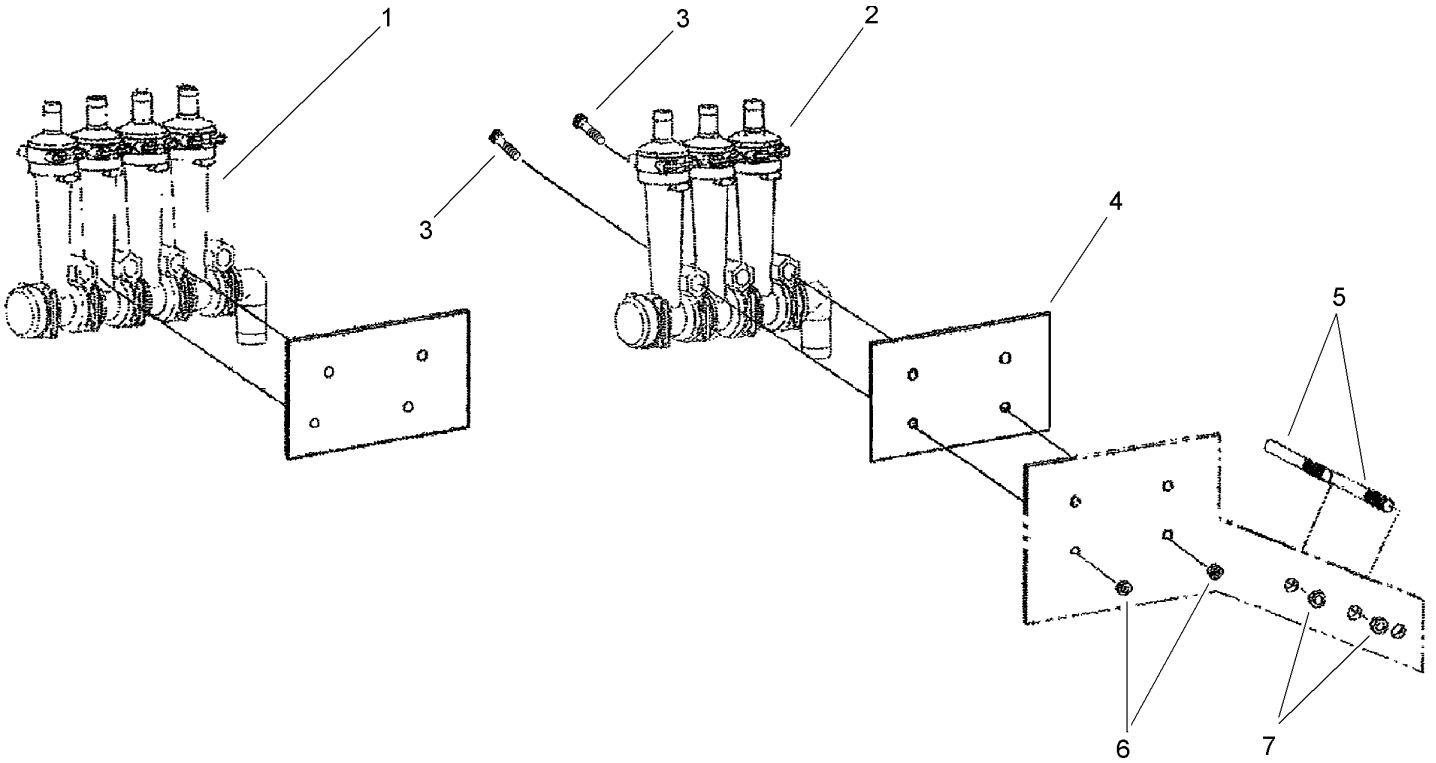
Ref	Part No.	Qty.	Description
1	94-8796	1	Boot Kit
2	94-8676	1	Tube-Cover
3	94-8665	1	Drive Screw ASM
4	94-8776	1	Housing-Front
5	80-5530	1	Clutch ASM
6	92-3851	1	Housing-Rear
7	94-8794	1	Motor
8	42582	1	Gear-Pinion, Motor
9	94-8795	1	Gear-Intermediate
10	42851	1	Sealing Kit

--	--	--	--



Nozzle Assembly

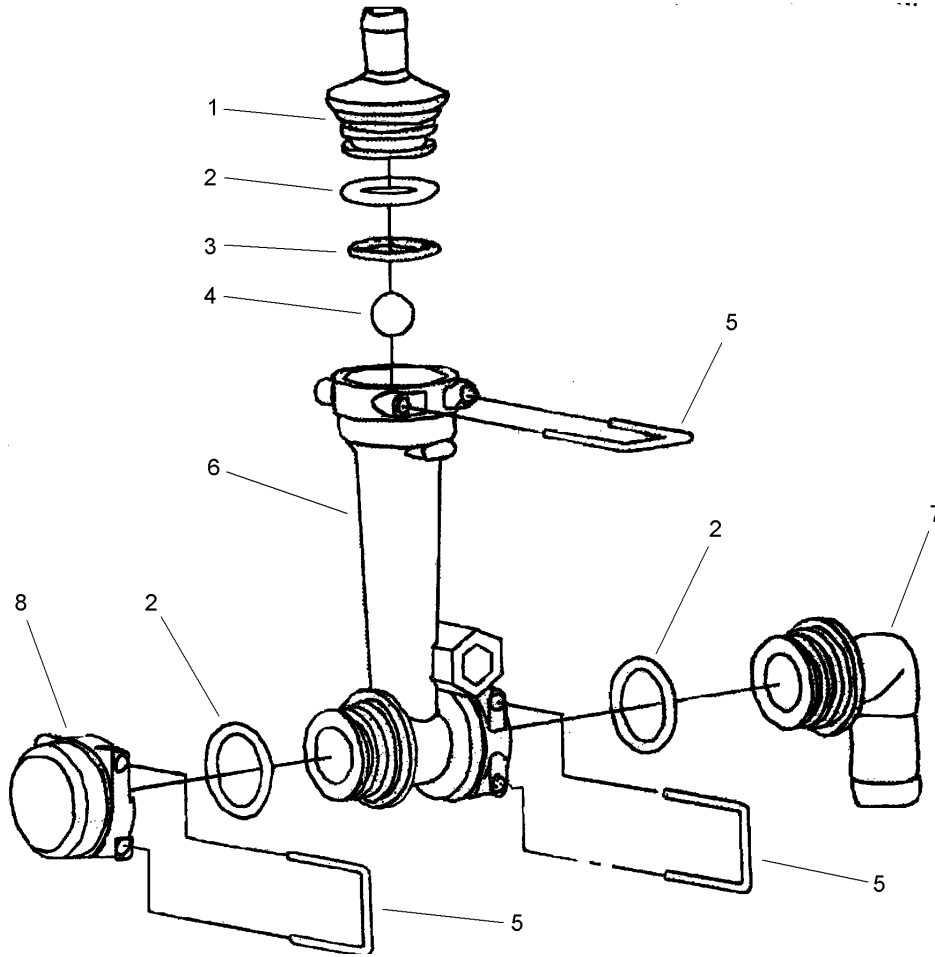
Ref	Part No.	Qty.	Description
1	41003	1	Diaphragm
2	95-9193	1	Cap-Diaphragm
3	94-8718	1	Nozzle
4	94-8720	1	Cap
5	40998	3	Seat-Gasket
6	95-9187	2	Cap-Blank



Flow Indicator Assembly

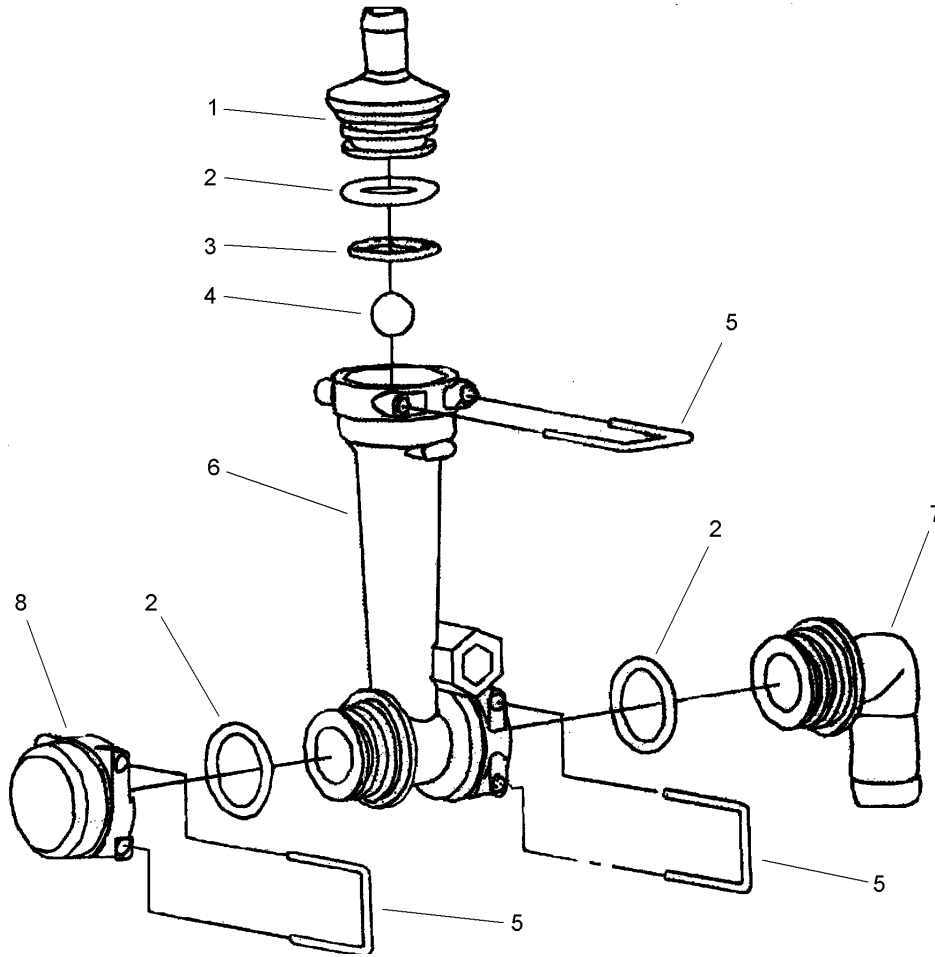
Ref	Part No.	Qty.	Description
1	100-7077	2	Flow Indicator ASM, Boom EXT
2	100-7078	1	Flow Indicator ASM, Center Section
3	321-11	6	Screw-HH
4	94-8691	3	Plate-Backing
5	100-7080	1	Clamp-Retainer, Hose
6	32146-17	6	Nut-Lock
7	3296-59	2	Nut-Lock, NI

--	--	--	--



Boom Flow Indicator Assembly No. 100-7077

Ref	Part No.	Qty.	Description
1	100-7081	4	Shank-Hose
2	100-7082	9	O-Ring
3	100-7083	4	Retainer-Ball, Flow Indicator
4	94-8724	4	Ball-Flow Indicator, Steel
5	100-7084	9	Lock-U Clip
6	100-7085	4	Body-Indicator, Flow
7	100-7086	1	Shank-Hose, 90 Degree
8	100-7087	1	Cap-Ors



Center Flow Indicator Assembly No. 100-7078

Ref	Part No.	Qty.	Description
1	100-7081	3	Shank-Hose
2	100-7082	7	O-Ring
3	100-7083	3	Retainer-Ball, Flow Indicator
4	94-8724	3	Ball-Flow Indicator, Steel
5	100-7084	7	Lock-U Clip
6	100-7085	3	Body-Indicator, Flow
7	100-7086	1	Shank-Hose, 90 Degree
8	100-7087	1	Cap-Ors

NOTES

NOTES

