



# Single Nozzle Kit

## For Multi-Pro® Turf Sprayers

Model No. 41024

### Installation Instructions

# Installation

## Loose Parts

Use the chart below to verify that all parts have been shipped.

Step	Description	Qty.	Use
<b>1</b>	No parts required	—	Prepare the machine.
<b>2</b>	Single nozzle assembly Mount plate Tube bracket Support bracket Clamp assembly Bolt (3/8 x 1 inch) Flange nut (3/8 inch) Washer	1 1 1 1 3 3 3 3	Install the nozzle mount.
<b>3</b>	No parts required	—	Attache the nozzle hose.

**Note:** Determine the left and right sides of the machine from the normal operating position.

**Note:** Thread sealing tape is used in the installation of this kit.

### Step

# 1

## Preparing the Machine

### No Parts Required

### Procedure

Position the machine on a level surface, stop the engine, engage parking brake, and remove the key.



If you leave the key in the ignition switch, someone could accidentally start the engine and seriously injure you or other bystanders.

Remove the key from the ignition switch before you do any maintenance.

# Step 2

## Installing the Nozzle Mount

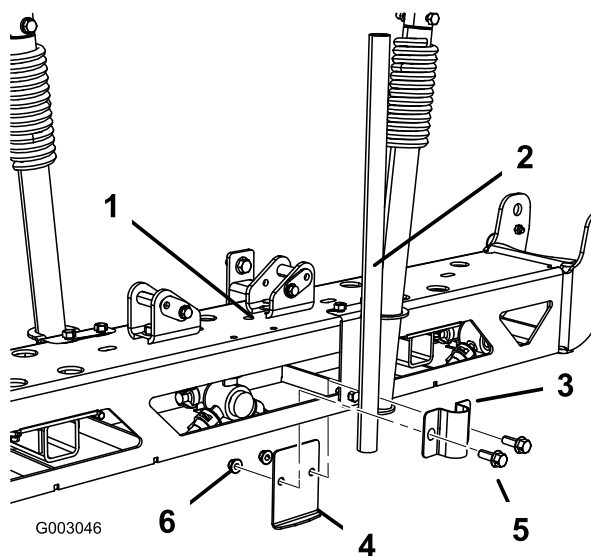
### Parts needed for this step:

1	Single nozzle assembly
1	Mount plate
1	Tube bracket
1	Support bracket
3	Clamp assembly
3	Bolt (3/8 x 1 inch)
3	Flange nut (3/8 inch)
3	Washer

### Procedure

For machines with a serial number of 260000001 and up:

Install the single nozzle assembly for new booms to the center boom assembly (Figure 1) using a mount plate, tube bracket, two bolts (3/8 x 1 inch) and two flange nuts (3/8 inch).

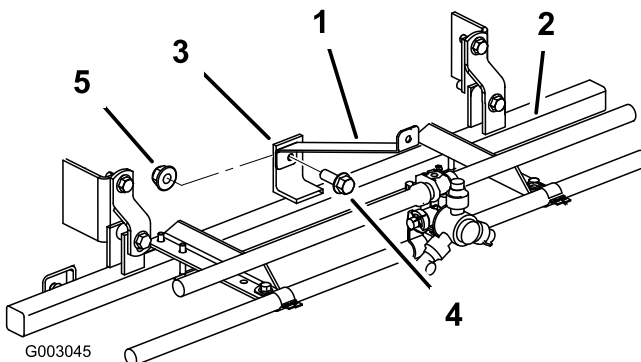


**Figure 1**

- |                           |                          |
|---------------------------|--------------------------|
| 1. Center boom assembly   | 4. Mount plate           |
| 2. Single nozzle assembly | 5. Bolt (3/8 x 1 inch)   |
| 3. Bracket                | 6. Flange nut (3/8 inch) |

For machines with a serial number of 259999999 and below with a standard boom:

1. Install the support bracket to the center boom frame's vertical tab using a bolt (3/8 x 1 inch), and a flange nut (3/8 inch) (Figure 2).

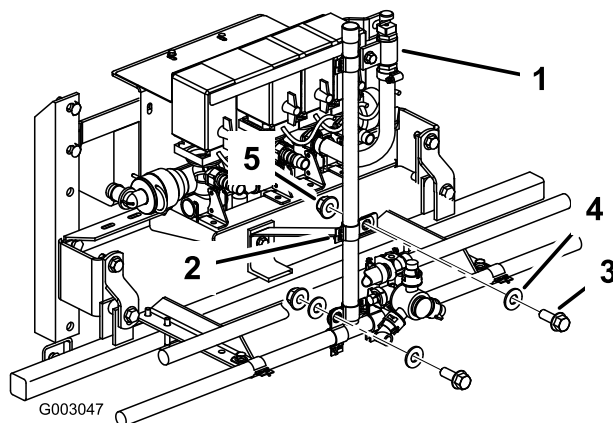


**Figure 2**

- |                      |                          |
|----------------------|--------------------------|
| 1. Support bracket   | 4. Bolt (3/8 x 1 inch)   |
| 2. Center boom frame | 5. Flange nut (3/8 inch) |
| 3. Vertical tab      |                          |

2. Install the single nozzle assembly and clamp to the support bracket (Figure 3) using a bolt (3/8 x 1 inch), washer (1 inch), and a flange nut (3/8 inch).

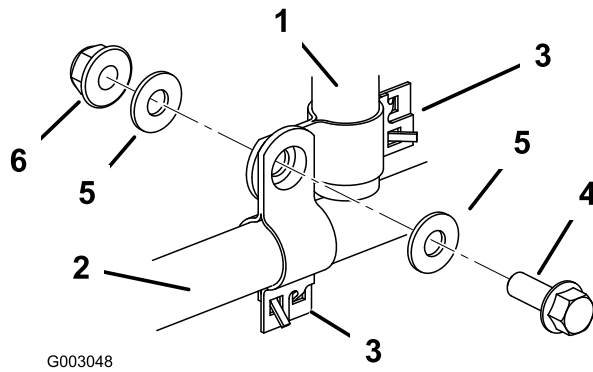
**Note:** Do not tighten fasteners completely at this time to allow for adjustment.



**Figure 3**

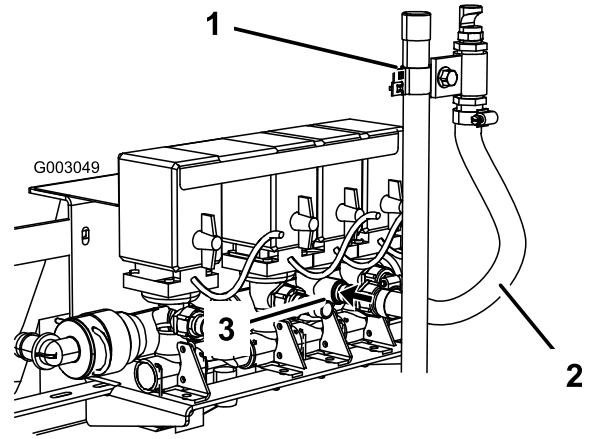
- |                           |                          |
|---------------------------|--------------------------|
| 1. Single nozzle assembly | 4. Washer (3/8 inch)     |
| 2. Clamp                  | 5. Flange nut (3/8 inch) |
| 3. Bolt (3/8 x 1 inch)    |                          |

3. Raise the end of the single nozzle assembly pipe above the center boom (Figure 4).



**Figure 4**

- |                        |                          |
|------------------------|--------------------------|
| 1. Pipe, single nozzle | 4. Bolt (3/8 x 1 inch)   |
| 2. Center boom         | 5. Washer (3/8 inch)     |
| 3. Clamp               | 6. Flange nut (3/8 inch) |



**Figure 5**

- |                           |                         |
|---------------------------|-------------------------|
| 1. Single nozzle assembly | 3. Center control valve |
| 2. Nozzle hose            |                         |

4. Assemble clamps around the end of the pipe and center boom as shown in Figure 4.
5. Fasten the clamps by installing a bolt (3/8 x 1 inch), two washers on either side of the clamps, and a flange nut (3/8 inch) as shown in Figure 4
6. Tighten the fasteners installed in Step 2.
7. Install the nozzle to the fitting and verify it is facing the correct direction (Figure 4).
8. Check the position of the single nozzle assembly and tighten any fasteners if necessary.

### Step

# 3

## Attaching the Nozzle Hose

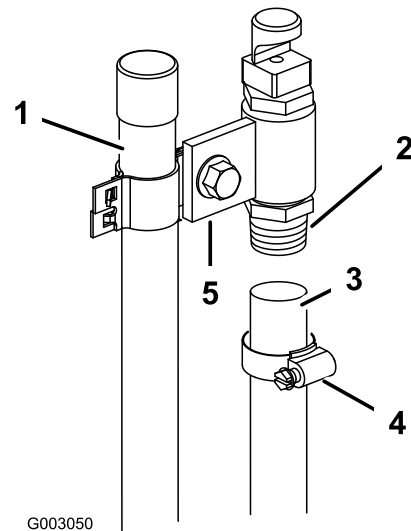
### No Parts Required

### Procedure

**Note:** Multi-Pro® 1200 sprayer will use the existing center boom supply hose to supply the attach the single nozzle. Please refer to Step .

1. Attach the single nozzle hose to the center flow control valve as shown in Figure 5.

2. Tighten the screw cap to fasten the hose to the control valves.
3. Attach the nozzle hose for Multi-Pro® 1200 sprayers as follows:
  - A. Loosen the clamp and remove the single nozzle assembly hose.
  - B. Disconnect the existing hose and clamp from the center boom assembly.
  - C. Soap the barb on the single nozzle assembly and attach the hose and clamp (Figure 6)



**Figure 6**

- |                           |          |
|---------------------------|----------|
| 1. Single nozzle assembly | 4. Clamp |
| 2. Barb                   | 5. Bolt  |
| 3. Hose from center boom  |          |

# Operation



Fluid under pressure can penetrate skin and cause injury.

- Keep your body and hands away from nozzles that eject high pressure fluid.
- Do not aim the sprayer at any person or animal.
- Make sure all fluid hoses and lines are in good condition and all connections and fittings are tight before applying pressure to the system.
- Use cardboard or paper to find leaks.
- Safely relieve all pressure in the system before performing any work on it.
- Get immediate medical help if fluid is injected into skin.
- Hot liquids and chemicals can cause burns or other harm.

## Adjusting the Nozzle

Adjust the height of the single nozzle to obtain the spread you desired.

1. To raise or lower the nozzle, loosen the bolt (Figure 6) fastening the clamp.
2. Move nozzle to the desired position and tighten the bolt.
3. Verify the nozzle is facing the correct direction.