



40in Bagger Enhancement Kit

For 2006 and After Mid-Size Mowers

Model No. 110–2025

Installation Instructions

Loose Parts

Use the chart below to verify that all parts have been shipped.

| Step | Description | Qty. | Use |
|----------|--|----------------------------|--|
| 1 | No parts required | – | Prepare the mower deck for installation. |
| 2 | Right side rubber baffle Left side rubber baffle Left metal baffle stiffener Carriage bolt (5/16 x 1 inch) Locknut (5/16 inch) Right metal baffle stiffener | 1 1 1 8 8 1 | Install the baffles. |

Step

1

Preparing the Mower Deck

No Parts Required

Procedure

1. Position the mower on a flat surface.
2. Disengage the PTO, move the motion control levers to the neutral locked position and set the parking brake.
3. Stop the engine, remove the key, and wait for all moving parts to stop before leaving the operating position.
4. Lift the front of the machine and support the machine using jack stands.
5. Thoroughly clean the mower deck. All debris must be removed to ensure the baffle will fit properly against the mower deck.
6. Repair all bent and damaged areas of the mower deck and replace any missing parts.



Mechanical or hydraulic jacks may fail to support the machine and cause a serious injury.

- Use jack stands when supporting the machine.
- Do not use hydraulic jacks.

Step

2

Installing the Baffles

Parts needed for this step:

| | |
|---|-------------------------------|
| 1 | Right side rubber baffle |
| 1 | Left side rubber baffle |
| 1 | Left metal baffle stiffener |
| 8 | Carriage bolt (5/16 x 1 inch) |
| 8 | Locknut (5/16 inch) |
| 1 | Right metal baffle stiffener |

Procedure

Note: Install bolts as shown in Figure 1.

Note: There are different ends on the left and right metal baffle stiffeners. See Figure 1 to identify the difference between the left and right metal stiffeners.

1. Install the left side rubber baffle and the left metal baffle stiffener with 4 bolts (5/16 x 1 inch) and 4 locknuts (5/16 inch) (Figure 1).
2. Install the right side rubber baffle and the right metal baffle stiffener with 4 bolts (5/16 x 1 inch) and 4 locknuts (5/16 inch) (Figure 1).
3. Rotate the cutting blades and make sure they do not hit the baffles.

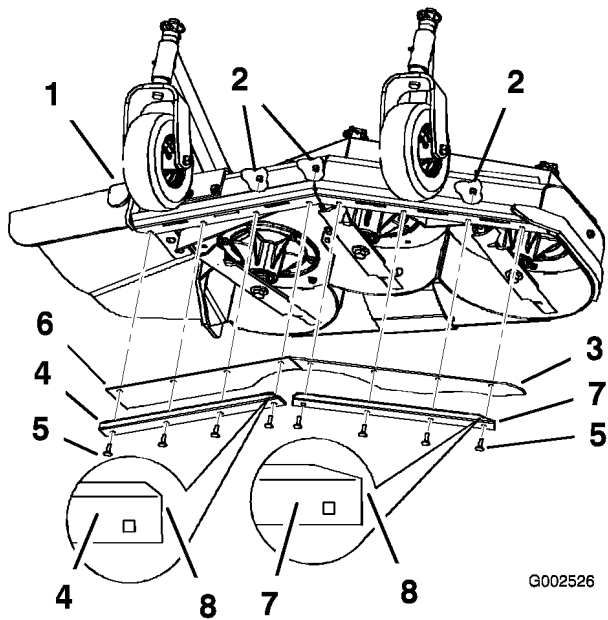


Figure 1

- | | |
|---------------------------------|---------------------------------------|
| 1. Mower deck | 5. Carriage bolt (5/16 x 1 inch) |
| 2. Locknut (5/16 inch) | 6. Right side rubber baffle |
| 3. Left side rubber baffle | 7. Left metal baffle stiffener |
| 4. Right metal baffle stiffener | 8. Note the different ends on baffles |