



# Trim/Discharge Side Anti-Scalp Roller Kit For Z400 Series Z Master® Mowers

Model No. 108-4140

Model No. 108-4141

## Installation Instructions

# Installation

## Loose Parts

Use the chart below to verify that all parts have been shipped.

Step	Description	Qty.	Use
1	Wheel bracket	1	Install the wheel bracket.
	Carriage bolt (3/8 x 3/4 inch)	3	
	Flange nut (3/8 inch)	3	
2	Wheel	1	Install the wheel.
	Bolt (3/8 x 4-3/4 inches)	1	
	Long spacer	1	
	Short spacer	1	
	Flange nut (3/8 inch)	1	

### Step

# 1

## Installing the Wheel Bracket

### Parts needed for this step:

1	Wheel bracket
3	Carriage bolt (3/8 x 3/4 inch)
3	Flange nut (3/8 inch)

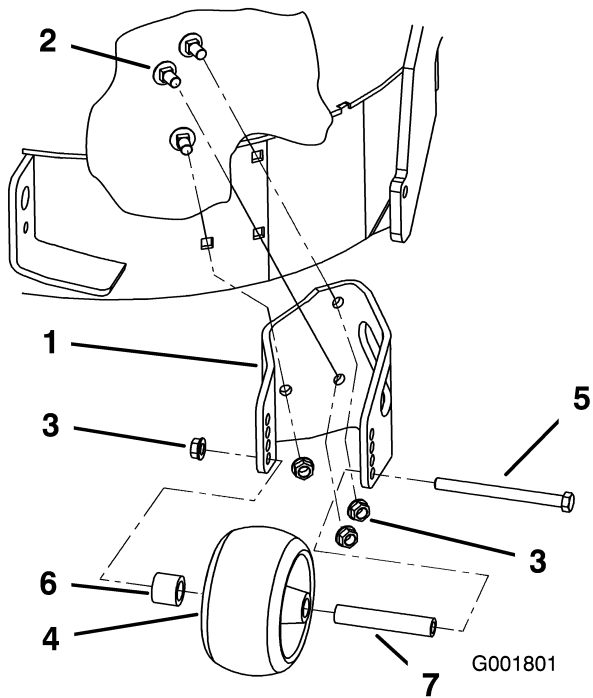
### Procedure

- Prepare the installation site as follows:
  - If you are replacing an existing anti-scalp wheel, remove the wheel, wheel bracket, and all fasteners from the mower and discard them.
  - If you are installing the anti-scalp wheel for the first time, locate the three holes on the rear trim or discharge side of the mower (depending on which kit you are installing)

and remove the three bolts and nuts that are installed in the holes.

- Install the wheel bracket to the mower using 3 carriage bolts (3/8 x 3/4 inch) and flange nuts (3/8 inch) (Figure 1).

**Important:** Ensure that you install the carriage bolts with the bolt heads on the inside of the mower and the nuts on the outside.



**Figure 1**

- |                                   |                              |
|-----------------------------------|------------------------------|
| 1. Wheel bracket                  | 5. Bolt (3/8 x 4-3/4 inches) |
| 2. Carriage bolt (3/8 x 3/4 inch) | 6. Short spacer              |
| 3. Flange nut (3/8 inch)          | 7. Long spacer               |
| 4. Wheel                          |                              |

spacer/wheel assembly at the desired height (Figure 1).

**Note:** Insert the bolt so that its head is toward the outside of the mower.

- Secure the wheel with a flange nut (3/8 inch) (Figure 1).

## Step **2**

### Installing the Wheel

#### Parts needed for this step:

1	Wheel
1	Bolt (3/8 x 4-3/4 inches)
1	Long spacer
1	Short spacer
1	Flange nut (3/8 inch)

#### Procedure

- Slide the long spacer into the wheel (Figure 1).
- Place the short spacer inside the wheel hub on the side of the wheel with the short hub (Figure 1).
- Place the wheel into the wheel bracket and push the bolt (3/8 x 4-3/4 inches) through the bracket, short spacer, and the long