



# Spool Carrier Kit for TX Compact Utility Loaders

Model No. 104-2685

Form No. 3353-873 Rev A

## Installation Instructions

### Loose Parts

**Note:** Use the chart below to identify parts for assembly.

Description	Qty.	Use
Spool carrier	1	Installing the spool carrier
Lynch pin, rectangular retainer	1	
Mounting tube	1	
Bolt, 4 inch	1	
Bolt, 2-1/2 inch	1	
Jam nut	1	
Secondary spool carrier	1	Installing the secondary spool carrier
Lynch pin, rectangular retainer	1	
Spool of wire (not included with the kit)	1 or 2	Installing spools
Washer	4	
Lynch pin, semi-circular retainer	2	
Brake strap	2	Installing the spool brakes
Brake cover	2	

### Installing the Spool Carrier

1. Remove the bolt and nut from the loader arm that secures the cylinder lock, retaining the nut.

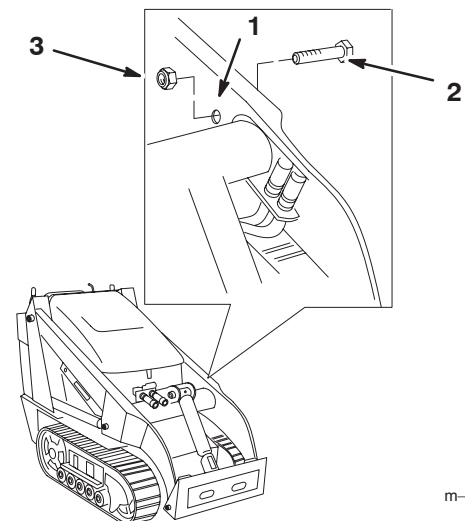
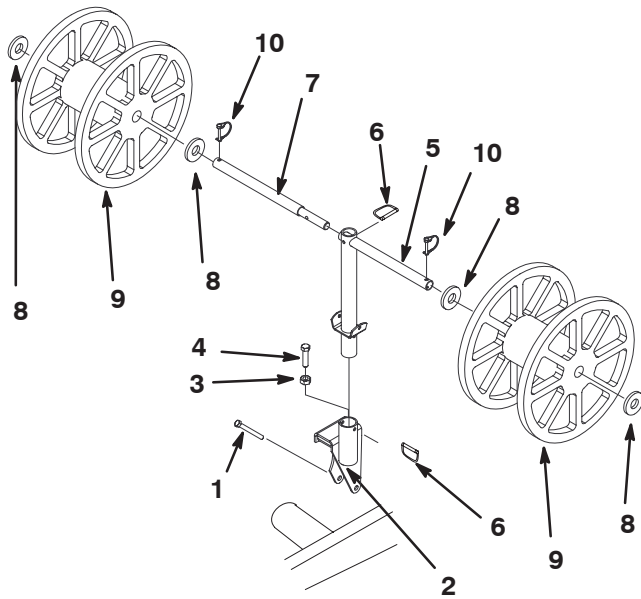


Figure 1

1. Loader arm
2. Bolt
3. Nut

- Place the mounting tube bracket over the loader arm and secure it and the cylinder lock with a new bolt (4 inch) and the nut removed in step 1 (Fig. 2).



m-7700

**Figure 2**

- |  |   |
|--|---|
| 1. Bolt, 4 inch                        | 7. Secondary spool carrier                |
| 2. Mounting tube                       | 8. Washer                                 |
| 3. Jam nut                             | 9. Spool (not supplied)                   |
| 4. Bolt, 2-1/2 inch                    | 10. Lynch pin with semi-circular retainer |
| 5. Spool carrier                       |   |
| 6. Lynch pin with rectangular retainer |   |
- Thread the jam nut onto the remaining bolt (2-1/2 inch) (Fig. 2).
  - Thread the bolt into the hole in the top on the mounting tube bracket, tightening it securely against the loader arm (Fig. 2).
  - Tighten the jam nut against the mounting tube bracket.
  - Place the spool carrier into the mounting tube, orienting the horizontal tube on the carrier parallel with the crossbar on the traction unit (Fig. 2).
  - Secure the spool carrier to the mounting tube with a lynch pin with a rectangular retainer (Fig. 2).

## Installing the Secondary Spool Carrier

- Slide the secondary spool carrier into the side hole in the top of the spool carrier (Fig. 2).
- Secure the secondary spool carrier with a lynch pin with a rectangular retainer (Fig. 2)

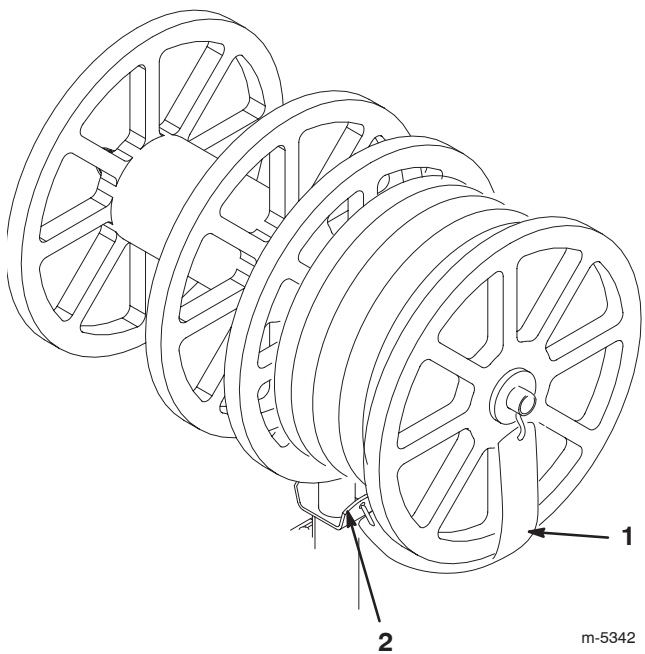
## Installing Spools

- Place a washer over the end of the spool carrier or secondary spool carrier (Fig. 2).
- Slide the spool onto the carrier (Fig. 2).
- Secure the spool with a washer and a lynch pin with a semi-circular retainer (Fig. 2).

## Installing a Spool Brake (Optional)

If you have problems with the spools freewheeling and unwinding on the carrier, install the spool brakes.

- Slide a brake cover over a brake strap (Fig. 3).



m-5342

**Figure 3**

- |   |                                 |
|---|---------------------------------|
| 1. Brake strap with brake cover installed | 2. Bracket on the spool carrier |
|---|---------------------------------|
- Remove the lynch pin securing the spool to be braked.
  - Install a hook on the brake strap through one of the holes from where you removed the lynch pin (Fig. 3), orienting the brake cover as follows:
    - If your spool is made out of plastic, place the cloth side of the cover against the spool.
    - If your spool is made out of wood, place the plastic side of the cover against the spool.
  - Hook the free hook of the brake strap to the bracket on the spool carrier (Fig. 3).