



Power Box Rake
for Compact Utility Loaders
Model No. 22425—Serial No. 24000001 and Up

Operator's Manual

Contents

	Page
Introduction	2
Safety	2
Safety and Instruction Decals	3
Specifications	4
Stability Ratings	5
Setup	5
Extending the Caster Wheels	5
Operation	5
Setting the Barrier Gap	5
Starting the Power Rake	6
Using the End Plates	6
Angling the Roller	6
Operating Tips	6
Maintenance	7
Recommended Maintenance Schedule	7
Lubricating the Pivot Points	8
Inspecting and Servicing the Drive Chain	8
Changing the Oil in the Chain Case	8
Storage	9
Troubleshooting	9

Introduction

Read this manual carefully to learn how to operate and maintain your product properly. The information in this manual can help you and others avoid injury and product damage. Although Toro designs and produces safe products, you are responsible for operating the product properly and safely.

You may contact Toro directly at www.Toro.com for product and accessory information, help finding a dealer, or to register your product.

Whenever you need service, genuine Toro parts, or additional information, contact an Authorized Service Dealer or Toro Customer Service and have the model and serial numbers of your product ready. You will find the model and serial number on a plate located on the product.

Write the product model and serial numbers in the space below:

Model No. _____
Serial No. _____

This manual identifies potential hazards and has special safety messages that help you and others avoid personal injury and even death. **Danger**, **Warning**, and **Caution** are signal words used to identify the level of hazard. However, regardless of the hazard, be extremely careful.

Danger signals an extreme hazard that **will** cause serious injury or death if you do not follow the recommended precautions.

Warning signals a hazard that **may** cause serious injury or death if you do not follow the recommended precautions.


Caution signals a hazard that may cause minor or moderate injury if you do not follow the recommended precautions.

This manual uses 2 other words to highlight information.



Important calls attention to special mechanical information and **Note**: emphasizes general information worthy of special attention.

Safety

To ensure maximum safety and best performance, and to gain knowledge of the product, it is essential that you and any other operator of the product read and understand the contents of this manual before the engine is ever started.

 This is the safety alert symbol. It is used to alert you to potential personal injury hazards. Obey all safety messages that follow this symbol to avoid possible injury or death.

Improperly using or maintaining this product could result in injury or death. To reduce this potential, comply with the following safety instructions.

 Danger 
<p>Contact with rotating teeth can cause entanglement, severe wounds, and/or death.</p> <ul style="list-style-type: none"> • Keep away from the rotating teeth while operating the power rake. • Keep your hands, feet, other parts of your body, and clothing away from rotating parts. • Before adjusting, cleaning, repairing, and inspecting the power rake, lower the power rake and loader arms to the ground, shut off the engine, and remove the key.

Danger

If there are buried power, gas, or telephone lines in the work area, you may contact them, causing a shock or an explosion.

Have the property or work area marked for buried lines and do not operate the power rake in marked areas.

Warning

When the engine is off, an attachment in the raised position can gradually lower, possibly pinning or injuring someone.

Always lower the attachment lift each time you shut off the traction unit.

Warning

Hydraulic fluid escaping under pressure can penetrate the skin and cause injury. Fluid injected into the skin must be surgically removed within a few hours by a doctor familiar with this form of injury, or gangrene may result.

- Keep your body and hands away from pin hole leaks or nozzles that eject high-pressure hydraulic fluid.
- Use cardboard or paper to find hydraulic leaks; never use your hands.

Caution

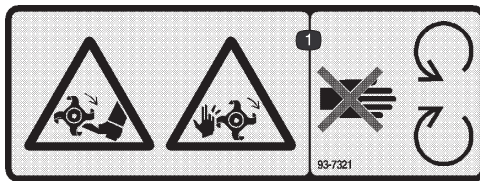
Hydraulic couplers, hydraulic lines and valves, and hydraulic fluid may be hot. If you contact hot components, you may be burned.

- Wear gloves when operating the hydraulic couplers.
- Allow the traction unit to cool before touching hydraulic components.
- Do not touch hydraulic fluid spills.

Safety and Instruction Decals



Safety decals and instructions are easily visible to the operator and are located near any area of potential danger. Replace any decal that is damaged or lost.



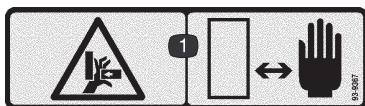
93-7321

1. Cutting/dismemberment hazard of hands and feet, rotating knives—stay away from moving parts.



100-4708

1. Thrown object hazard—Keep bystanders a safe distance from the traction unit.



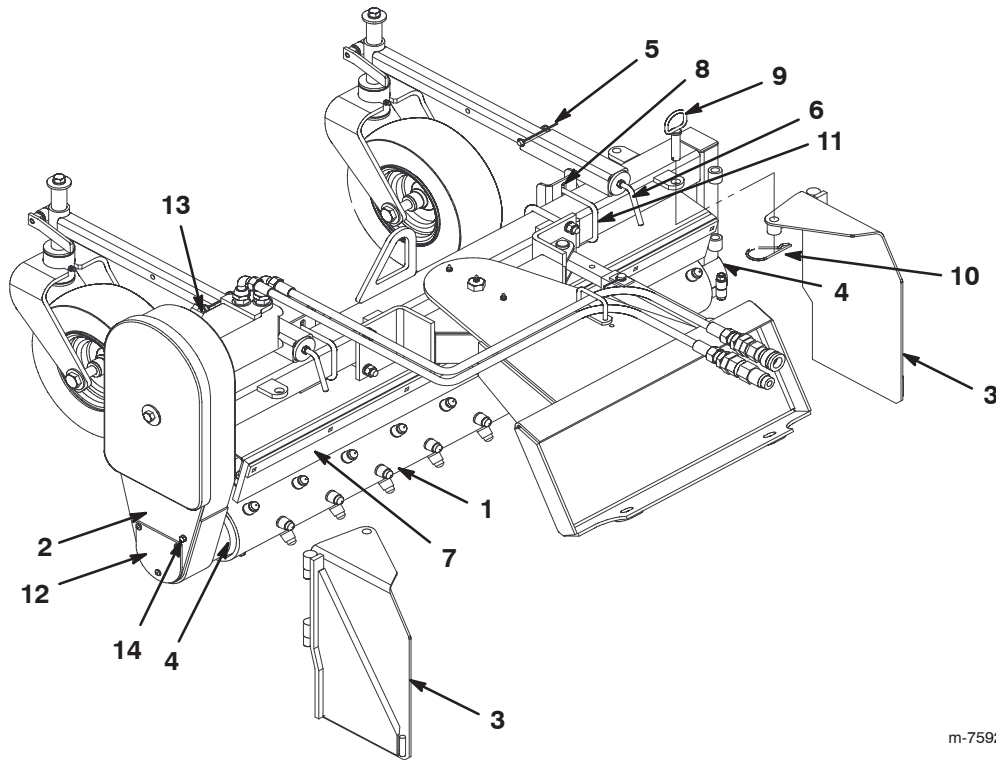
93-9367

1. Crushing hazard of hand—keep hands a safe distance from the hazard area.

Specifications

Note: Specifications and design are subject to change without notice.

Raking width	48 inches (122 cm)
Roller type	Carbide toothed roller 7-inch (18 cm) diameter
Roller angle (angling model only)	20° in both directions
Gap (tube to barrier)	1-1/8 to 1-3/4 inch (2.9 to 4.4 cm) adjustable
Tires	13 x 5.00
Tire Pressure	20 psi (137 kPa)
Weight (angling rake)	510 lbs (232 kg) max.
Oil capacity of the chain case	approx. 1.5 pints (.71 l)



m-7592




Figure 1

- | | | | |
|-----------------------|------------------------------|----------------------|---------------------|
| 1. Roller | 5. Caster lock pin (2) | 9. End plate pin (2) | 12. Oil drain cover |
| 2. Chain case | 6. Caster locking handle (2) | 10. Hairpin (2) | 13. Fill hole plug |
| 3. End plate | 7. Barrier | 11. U-bolt | 14. Level hole plug |
| 4. Roller bearing (2) | 8. Barrier gap adjustment | | |

Stability Ratings

Warning	
<p>If you exceed the maximum slope, the traction unit could tip, possibly crushing you or bystanders.</p> <p>Do not drive the the traction unit on a slope steeper than the maximum recommended slope.</p>	

To determine the degree of slope you can traverse with the power rake installed on a traction unit, find the stability rating for the hill position you want to travel in the table below, then find the degree of slope for the same rating and hill position in the Stability Data section of the traction unit *Operator's Manual*.

Orientation	Stability Rating
Front Uphill 	B
Rear Uphill 	D
Side Uphill 	C

Important If you have a traction unit other than the TX, use the counterweight on the traction unit when using the power rake, or the traction unit may become unstable.

Setup

Extending the Caster Wheels

1. Extend the caster arms so that the caster wheels are in the operating position.
2. Tighten the caster locking handles to secure the caster arms in place.

Refer to your traction unit *Operator's Manual* for information on installing and removing attachments from your traction unit.

Operation

Important Lift and move the attachment using the traction unit.

Refer to your traction unit *Operator's Manual* before installing, operating, and removing the power rake.

Setting the Barrier Gap

The normal gap between the roller and barrier for average conditions is about 1-1/4 inch. You can adjust this gap by loosening the U-bolt that holds the barrier mount and sliding it up or down. A wider opening allows more dirt and rock to pass through. For finer raking, reduce the gap, but be careful not to let the roller hit the barrier. The gap should be the same all the way across (Fig. 2).

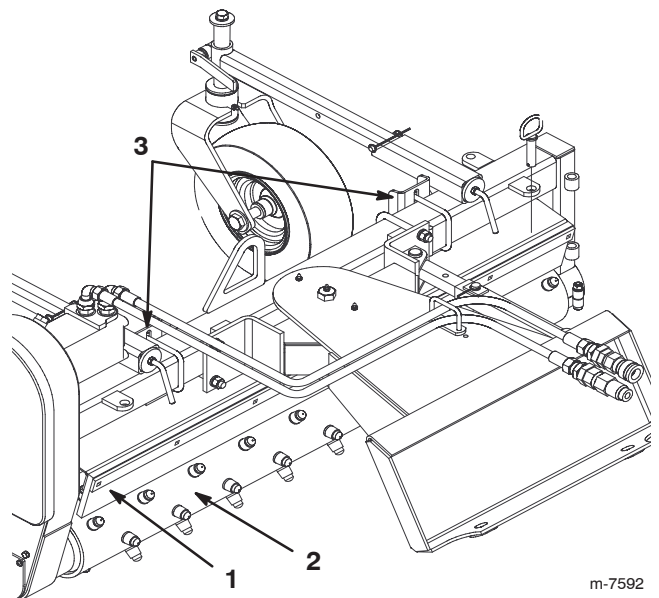


Figure 2





- | | |
|------------|---------------------------|
| 1. Barrier | 3. Barrier gap adjustment |
| 2. Roller | |

Starting the Power Rake

With the end plates mounted in the working position and the rake straight (the end plates parallel with the traction unit track), material can be moved along, filling in the low spots. This attachment is used to clear the ground of rocks, so you do not need to clear all the rocks from the area prior to operating the power rake.

1. Start the traction unit engine.
2. Lower the power rake slowly to the ground.
3. Engage the hydraulic control lever for auxiliary implements.
4. Move the traction unit forward or backward as desired.

Note: For the roller to operate effectively, rotate it in the opposite direction of the traction unit track. The direction of the roller rotation is controlled by the traction unit hydraulic controls. Refer to the chart below.

Roller Rotation	Travel Direction
	
	

Using the End Plates

The end plates contain the material in front of the roller while the clean material passes between the roller and the barrier. With the end plates mounted in the working position and the rake straight (parallel with traction unit track), the material can be moved, filling in the low spots.

You can mount the end plates to either the front or the back of the power rake, depending on the raking direction. When you move the end plates from front to back, you must move the left one to the right side and the right one to the left side.

To move the end plate, remove the hair pin from the end plate pin, and pull out the pin from the end plate (Fig. 3).

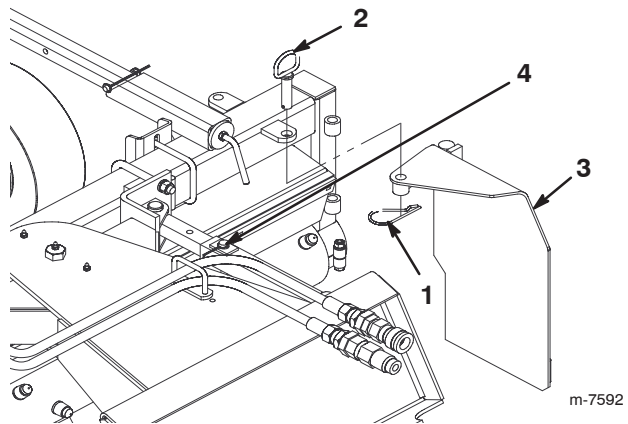


Figure 3

1. Hair pin
2. End plate pin
3. End plate
4. Angle locking pin

Angling the Roller

You can angle the roller 20° in either direction. For windrowing, remove the angle locking pin (Fig. 3), slide the angle mount to a new set of holes, and insert the pin.

Operating Tips

Important Do not drop the power rake onto the ground with the roller turning. Sudden high speed jolts multiply the stress to the drive line and can cause extreme damage.

- Always begin power raking at the slowest ground speed possible. Increase the ground speed if conditions permit.
- Always use full throttle (maximum engine speed).
- If a rock or other obstruction gets into the teeth, stop the hydraulics and drive the traction unit forward until the obstruction is dislodged.
- Reduce the ground speed in rocky conditions. Increase the ground speed if the conditions permit.
- The roller should be level with the ground. The power rake should also be level with the ground front to back. To accomplish this, raise or lower the gauge wheels and use the traction unit's tilt cylinder.
- To allow the roller to penetrate deeper into the ground, loosen the handle and raise the gauge wheels. To raise the roller, lower the gauge wheels.

- Because the chain case end of the roller is heavier than the other end of the roller, set the tire closest to the chain case down 3/4 inch lower than the opposite tire. This will still give an even grade when landscaping.
- You can achieve further depth control by tilting the rake forward on its gauge wheels to raise the roller, or tilt the rake back to raise the gauge wheels and allow the roller to penetrate more deeply.
- Check the air pressure in each tire regularly to maintain an even and consistent grade.
- To break up compacted soil, roll back the attachment plate to take the guide wheels off the ground so that only the toothed roller is in contact with the ground. Control the ground speed to avoid stalling the toothed roller. Remove the end plates to allow material to move out of the way if you are only trying to break up the soil.
- To remove loose debris, tilt the traction unit attachment plate until the guide wheels control the depth of the toothed roller. You can angle the rake at this time for windrowing debris or you can set the rake straight with both end plates installed to collect debris. You can increase the traction unit speed when you do this.
- For finish grading, tilt the rake forward until the teeth of the toothed roller are barely touching the soil. You can increase the traction unit speed to collect the material from the high spots and leave it in the lower areas.
- To thatch grassy areas, tilt the traction unit attachment plate forward to support the rake on the front gauge wheels and the toothed roller raised so that the teeth are just grazing the surface. The travel speed should be slow.

Maintenance

Note: Determine the left and right sides of the machine from the normal operating position.

Recommended Maintenance Schedule

Maintenance Service Interval	Maintenance Procedure
10 Hours	<ul style="list-style-type: none"> • Check all hardware and tighten all nuts and bolts as needed.
Weekly	<ul style="list-style-type: none"> • Lubricate all pivot points. • Lubricate the caster axle. • Lightly lubricate the bearing at each end of the roller with 1 or 2 pumps of grease. • Check the tire pressure (Maintain at 20 psi cold).
Monthly	<ul style="list-style-type: none"> • Inspect the drive chain for stretching. • Check the oil level in the chain case and add oil if necessary.
Quarterly	<ul style="list-style-type: none"> • Change the oil in the chain case; add 1.5 pints of 85–140 wt. lube.
Storage	<ul style="list-style-type: none"> • Paint chipped surfaces.

Caution

If you leave the key in the ignition switch, someone could start the engine, seriously injuring you or bystanders.

Remove the key from the ignition switch before performing any maintenance.

Lubricating the Pivot Points

Lubricate the pivot points with general-purpose grease in the locations shown in Figure 4.

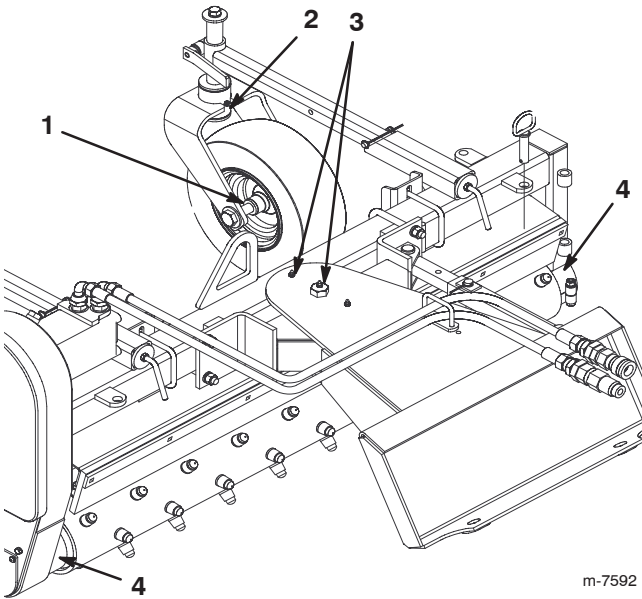


Figure 4

- | | |
|---------------------------|-------------------|
| 1. Caster axle (2) | 3. Pivot points |
| 2. Caster pivot point (2) | 4. Roller bearing |

Inspecting and Servicing the Drive Chain

Inspect the drive chain monthly. A new chain has a tendency to stretch, so check the chain tension to prevent it from becoming excessively loose.

1. Loosen the bolt that holds the chain case cover.
2. If the chain appears excessively loose, replace the chain or contact an Authorized Service Dealer.

Note: The chain tension is preset with the extension spring.

3. Install the chain cover and bolt and torque the bolt to 75 ft-lb (102 N·m).

Changing the Oil in the Chain Case

Change the chain oil every 200 operating hours.

Oil Type: 85W140

1. Park the power rake on a flat surface and ensure that the chain case is perpendicular to the ground.
2. Lower the loader arms.
3. Shut off the engine and remove the key.
4. Remove the fill hole plug on top of the chain case (Fig. 5).

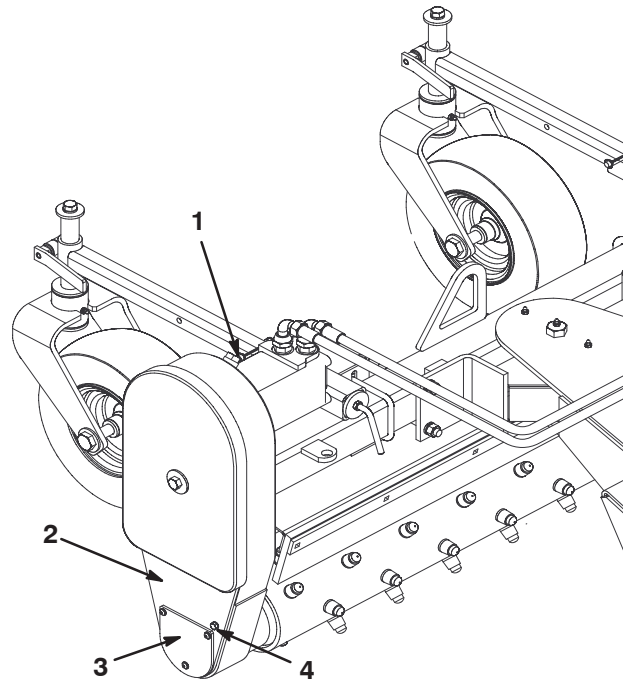


Figure 5

- | | |
|-------------------|--------------------|
| 1. Fill hole plug | 3. Oil drain cover |
| 2. Chain case | 4. Level hole plug |

5. Place a large drip pan under the drive chain case.
6. Remove the oil drain cover (Fig. 5).
7. When all the oil has drained from the oil drain cover, install the cover.
8. Pour oil into the fill hole slowly until oil runs out the level hole (Fig. 5).
9. Install the level hole plug and torque it to 100 in-lb (1130 N·cm).
10. Install the fill hole plug (Fig. 5).
11. Wipe up any spilled oil.
12. Recycle oil according to local codes.

Storage

1. Before long term storage, wash the power rake with mild detergent and water.
2. Check and tighten all bolts, nuts, and screws. Repair or replace all damaged or worn parts.
3. Check the oil level in the chain case and add oil if necessary.
4. Ensure that all hydraulic couplers are connected together to prevent contamination of the hydraulic system.
5. Paint all scratched or bare metal surfaces with paint available from an Authorized Service Dealer.
6. Store the power rake in a clean, dry garage or storage area. Cover it to protect it and keep it clean.
7. Store the power rake on a hard and level surface, and block it to prevent it from moving.

Troubleshooting

Problem	Possible Causes	Corrective Action
The power rake does not operate.	<ol style="list-style-type: none"> 1. The hydraulic coupler is not completely connected. 2. The hydraulic coupler is damaged. 3. There is an obstruction in a hydraulic hose. 4. The auxiliary valve on the traction unit is not opening. 5. There is an obstruction in the power rake. 6. The drive chain is broken. 7. The drive chain is loose. 8. A hydraulic valve is damaged. 9. The drive motor is damaged. 	<ol style="list-style-type: none"> 1. Check and tighten all couplers. 2. Check the couplers and replace any that are damaged. 3. Find and remove the obstruction. 4. Repair the valve. 5. Find and remove the obstruction. 6. Repair or replace the chain. 7. Repair or replace the chain. 8. Repair or replace the hydraulic valve. 9. Repair or replace the drive motor.
Oil is leaking from the traction unit.	<ol style="list-style-type: none"> 1. A seal is worn or damaged. 2. The hoses are loose or damaged. 3. The connections are loose or damaged. 4. The housing is worn or damaged. 5. The roller is out of position. 	<ol style="list-style-type: none"> 1. Contact an Authorized Service Dealer. 2. Contact an Authorized Service Dealer. 3. Contact an Authorized Service Dealer. 4. Contact an Authorized Service Dealer. 5. Contact an Authorized Service Dealer.

