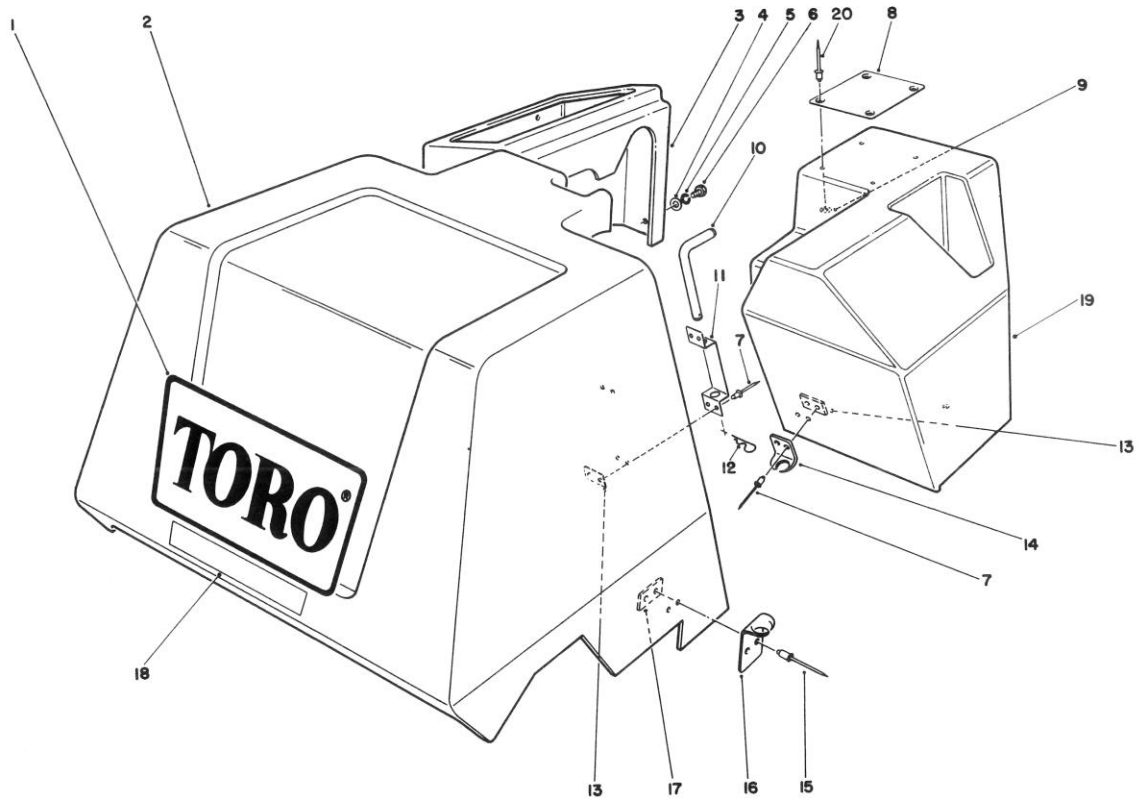




MODEL NO. 09110-80001 & UP

**PARTS
CATALOG**

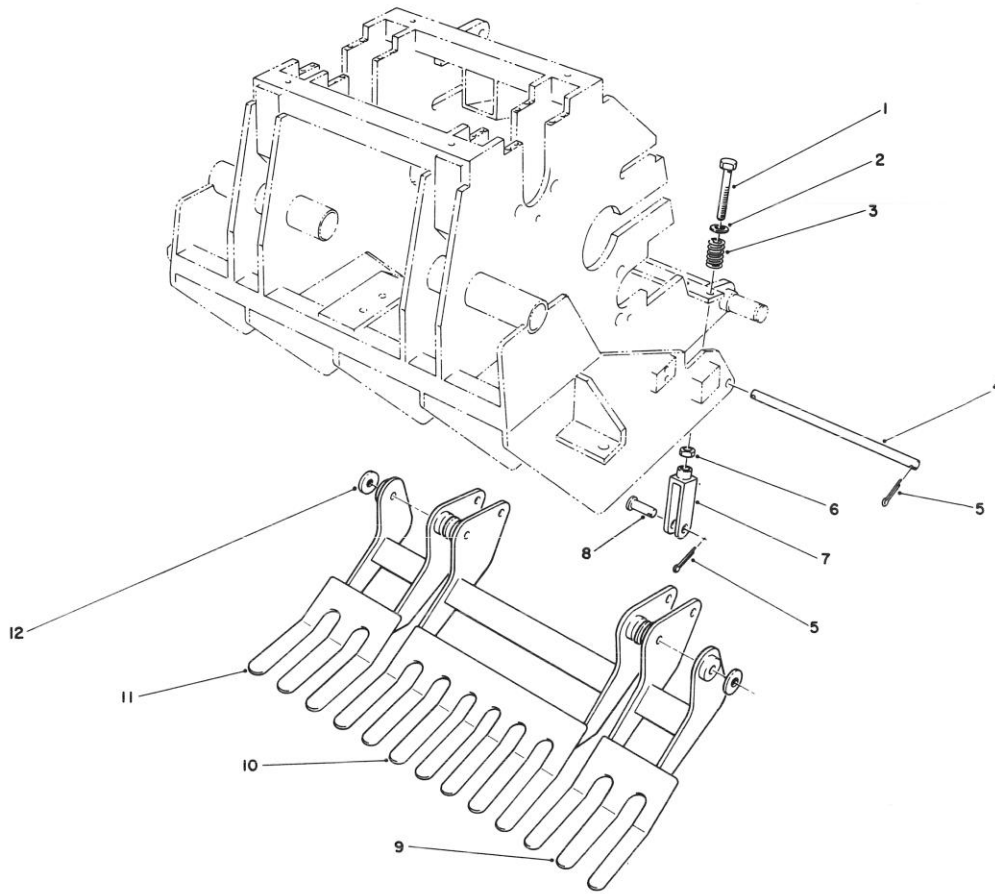
GREENS AERATOR



COVER ASSEMBLY

Ref. No.	Part No.	Description	No. Used
1	59-4350	Decal — Toro	1
2	66-4130	Cover — Coring Head	1
3	66-4110	Cover — Controls	1
4	3256-23	Washer — Plain	4
5	3253-4	Washer — Lock	4
6	322-3	Screw — Cap Hex Hd.	4
7	3269-8	Rivet — Pop	10
8	66-4840	Shield — Heat	1
9	5-1254	Washer	4
10	66-4060	Pin — Idler	1

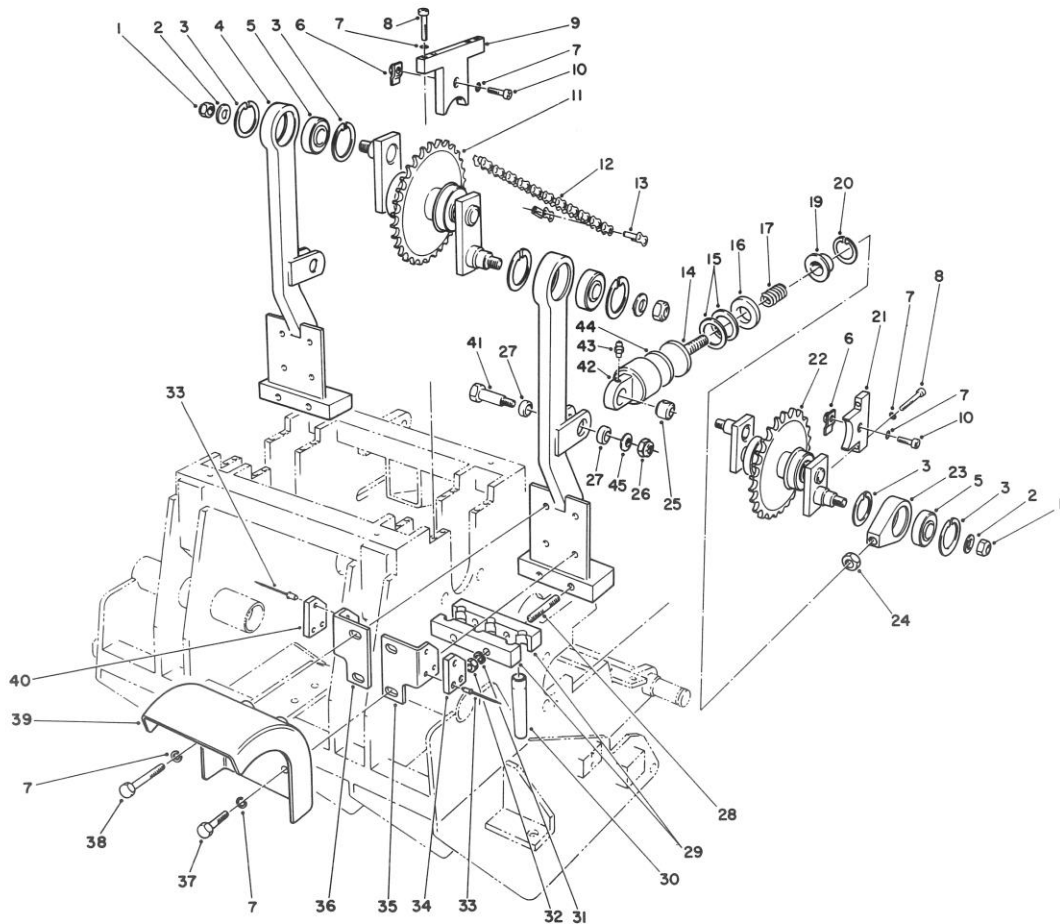
Ref. No.	Part No.	Description	No. Used
11	66-4440	Holder — Idler Pin	1
12	3290-355	Pin — Hairpin Cotter	1
13	59-9610	Plate — Backup	5
14	249-40	Keeper	3
15	3269-4	Rivet — Pop	4
16	249-38	Keeper	2
17	59-9611	Plate — Backup	2
18	59-9930	Decal — Danger	1
19	66-4120	Cover — Clutch	1
20	3269-17	Rivet — Pop	4



TURF GUARD ASSEMBLY

Ref. No.	Part No.	Description	No. Used
1	3211-11	Screw — Cap Hex Hd.	4
2	3256-4	Washer — Plain	4
3	59-3490	Spring — Compression	4
4	59-2770	Rod — Pivot	2
5	3272-6	Pin — Cotter	8
6	3220-3	Nut — Jam	4

Ref. No.	Part No.	Description	No. Used
7	282-1	Clevis	4
8	283-2	Pin — Clevis	4
9	59-2250	Turf Guard — R.H.	1
10	59-2240	Turf Guard — Center	1
11	59-2260	Turf Guard — L.H.	1
12	3256-26	Washer — Flat	6



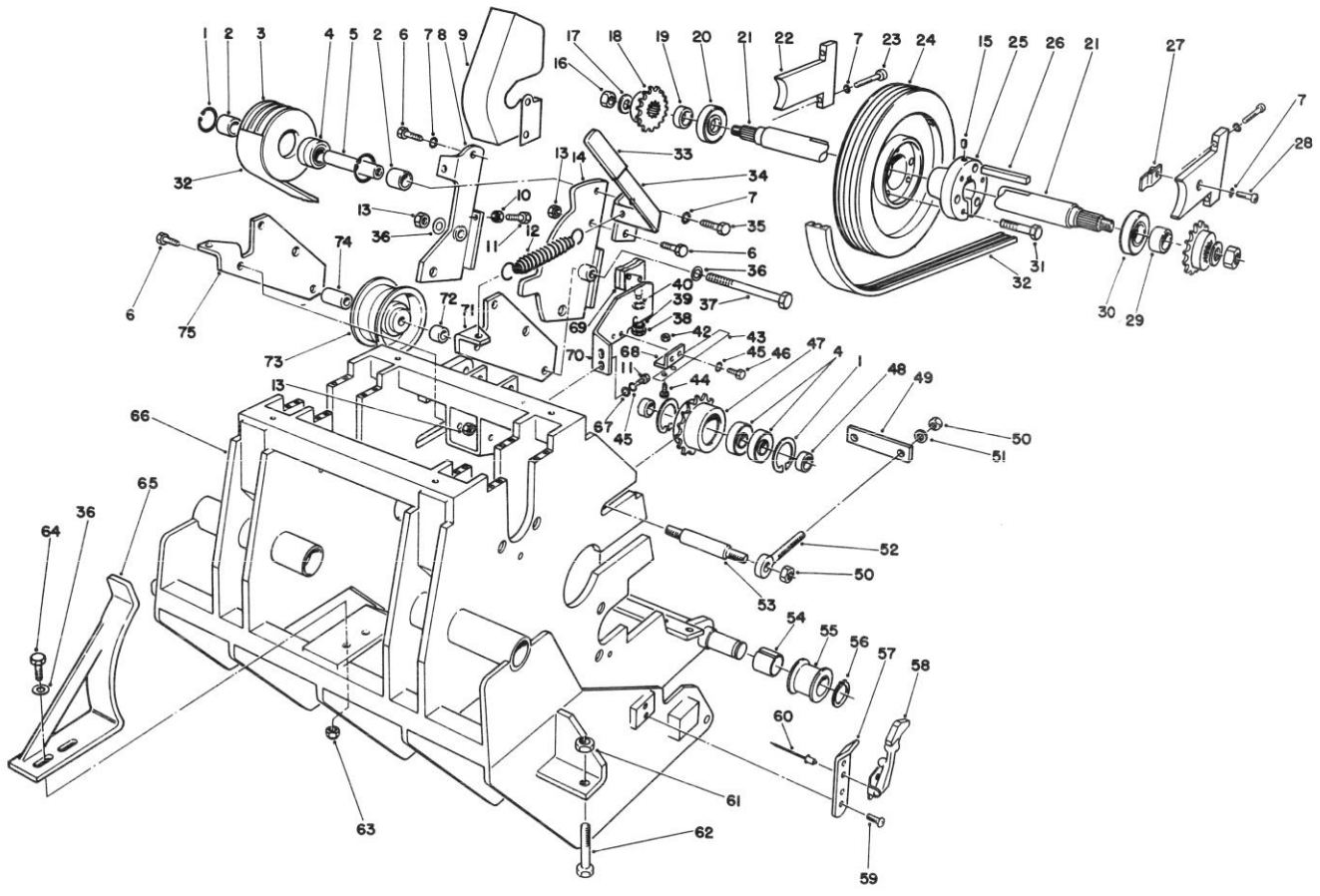
TINE ARM & CRANK ASSEMBLY

Ref. No.	Part No.	Description	No. Used
1	3296-67	Nut — Hex	8
2	3256-44	Washer — Plain	8
3	32120-22	Ring — Retaining	16
4	13-1509	Arm — Tine (Incl. Ref. #27 & 28)	4
5	251-312	Bearing	8
6	59-2710	Clip — Retaining	15
7	3253-21	Washer — Lock	52
8	3274-50	Screw — Hex Socket Hd.	24
9†		Cap — Bearing	4
10	3274-7	Screw — Hex Socket Hd.	15
11	66-4030	Crank Assembly — Long	2
12	59-2080	Chain — Roller	2
13	287-13	Link — Connecting	2
14	59-3460	Rod — Ram	4
15	59-9600	Spacer — Damper (Large)	8
16	59-3480	Cushion	4
17	66-9010	Spring — Compression	4
19	59-3450	Retainer	4
20	32151-75	Ring — Retaining	4
21†		Cap — Bearing	4
22	66-4040	Crank Assembly — Short	2
23	59-3410	Retainer — Bearing	4
24	3218-6	Nut — Jam	4
25	59-3520	Bushing — Long	4
26	32152-10	Nut — Lock	4
27	59-3510	Bushing — Short	8
28	61-9160	Stud	8

Ref. No.	Part No.	Description	No. Used
29	59-2500	Block	8
*	62-4610	Block (For 3/4" Tines)	8
30	59-3670	Tine — 5/8"	12
*	59-3680	Tine — 1/2"	12
*	59-3690	Tine — 3/8"	12
*	62-4600	Tine — 3/4"	12
*	59-9770	Tine — 5/8", Long Wear	12
*	59-9760	Tine — 1/2", Long Wear	12
31	3253-7	Washer — Lock	8
32	3217-9	Nut — Hex	8
33	3269-3	Rivet — Pop	24
34	59-2520	Plate — Wear R.H.	4
35	66-8980	Wear Plate Assembly R.H. (Incl. Ref. #33 & 34)	4
36	66-8990	Wear Plate Assembly L.H. (Incl. Ref. #33 & 40)	4
37	323-6	Screw — Cap Hex Hd.	8
38	323-11	Screw — Cap Hex Hd.	8
39	59-4220	Deflector — Kickout	4
40	59-2550	Plate — Wear L.H.	4
41	59-3500	Bolt — Shoulder	4
42	59-3420	Housing	4
43	302-2	Fitting — Grease	4
44	59-3470	Cushion	4
45	21-0640	Washer — Belleville	4
*	62-4740	Timing Rod	1
*	12-3819	Damper Assembly (Incl. Ref. #14-17, 19-20, 25 & 42-44)	1

† Included with Coring Head Frame Assembly #59-1730.

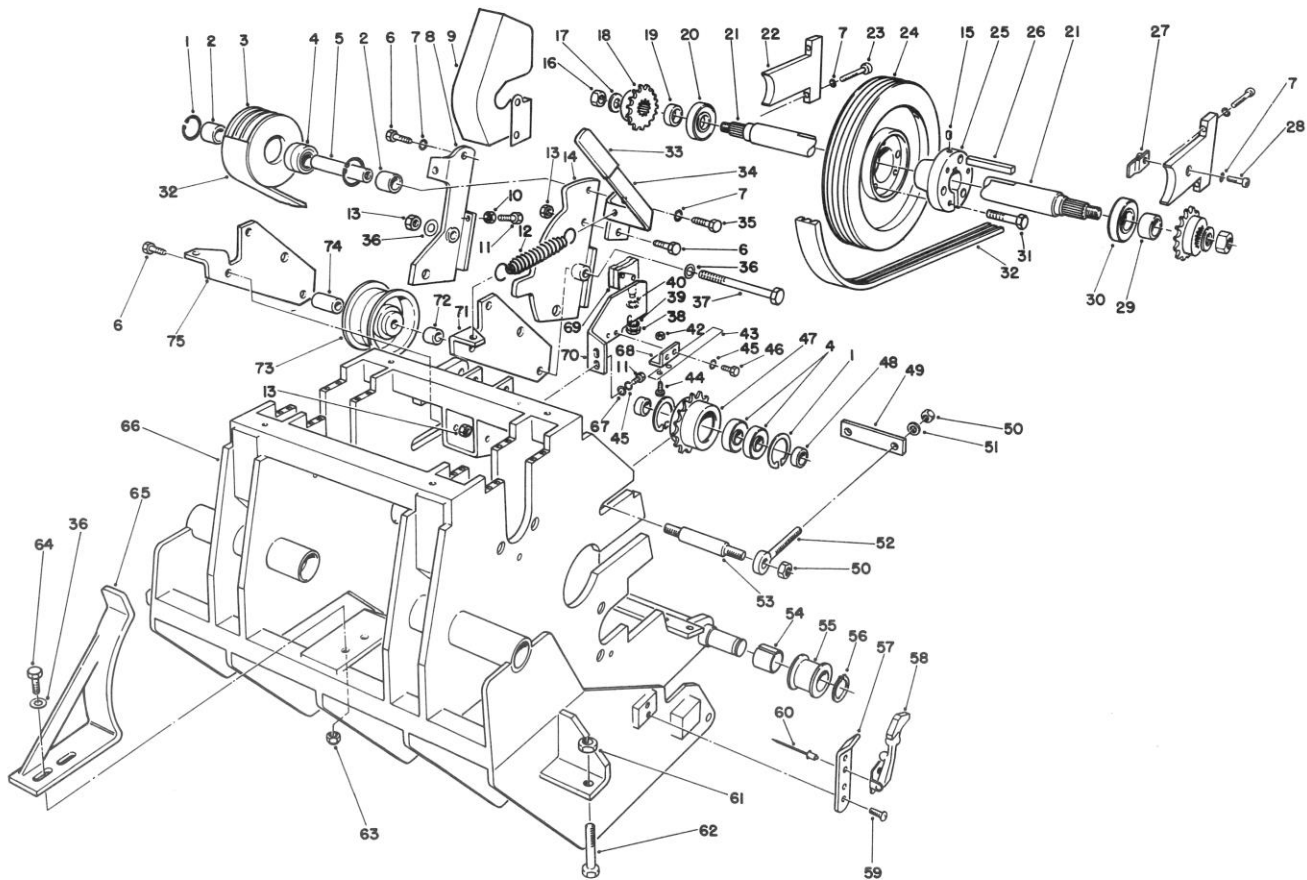
* Not Illustrated



CORING HEAD DRIVE ASSEMBLY

Ref. No.	Part No.	Description	No. Used
1	32120-11	Ring — Retaining	6
2	66-4380	Spacer	2
3	66-3470	Pulley — Idler	1
4	251-53	Bearing	6
5	66-3480	Shaft — Idler	1
6	323-6	Screw — Cap Hex Hd.	14
7	3253-21	Washer — Lock	61
8	66-4320	Bracket W.A. — Idler L.H.	1
9	66-8910	Guard — Pulley	1
10	3218-1	Nut — Jam	2
11	321-6	Screw — Cap Hex Hd.	4
12	66-4270	Spring — Extension	2
13	32153-2	Nut — Lock	6
14	66-4280	Bracket W.A. — Idler R.H.	1
15	3245-2	Screw — Set	1
16	3296-7	Nut — Lock	10
17	3256-44	Washer — Plain	10
18	66-3790	Sprocket	2
19	66-4690	Spacer	1
20	251-312	Bearing	1
21	66-3840	Shaft — Power	1
22		Cap — Bearing	2

Ref. No.	Part No.	Description	No. Used
23	3274-50	Screw — Cap Socket Hd.	4
24	59-2130	Pulley	1
25	59-3790	Bushing (Incl. Ref. #15 & 31)	1
26	59-4210	Key	1
27	59-2710	Clip — Retaining	15
28	3274-7	Screw — Cap Socket Hd.	15
29	66-4680	Spacer	1
30	251-313	Bearing	1
31	322-7	Screw — Cap Hex Hd.	3
32	66-4070	V-Belt	1
33	3-7877	Grip — Handle	1
34	66-4560	Handle	1
35	323-7	Screw — Cap Hex Hd.	1
36	3256-24	Washer — Plain	4
37	323-25	Screw — Cap Hex Hd.	1
38	218-576	Nut — Hex	1
39	3254-4	Washer — Lock	1
40	3256-25	Washer — Plain	1
42	3296-27	Nut — Lock	2
43	66-4480	Activator — Switch	1
44	3250-31	Screw — Machine Phillips Hd.	2

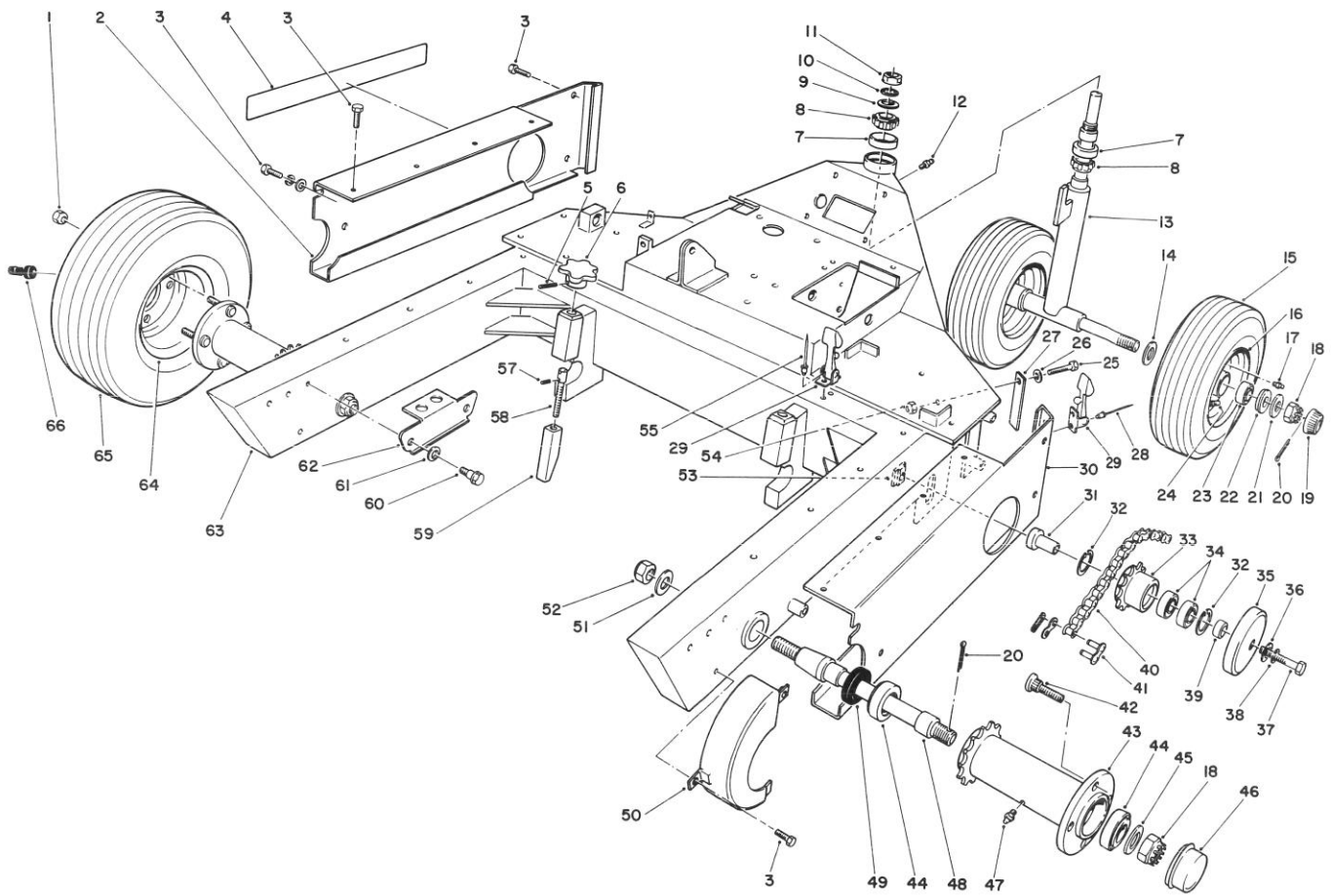


CORING HEAD DRIVE ASSEMBLY (Continued)

Ref. No.	Part No.	Description	No. Used
45	3253-3	Washer — Lock	4
46	321-2	Screw — Cap Hex Hd.	2
47	59-2390	Sprocket	2
48	59-2600	Bushing	4
49	59-2070	Bar — Keeper	2
50	3296-23	Nut — Lock	8
51	3256-26	Washer — Plain	10
52	59-2620	Eye Bolt	4
53	59-2610	Shaft	2
54	59-2360	Bushing — Split	2
55	59-2370	Sleeve	2
56	32151-77	Ring — Retaining	2
57	59-9640	Plate — Handle	2
58	59-9750	Latch Assembly	2
59	32140-29	Screw — Machine Hex Washer Hd. Ext. Sems	4
60	3269-4	Rivet — Pop	4

Ref. No.	Part No.	Description	No. Used
61	3218-5	Nut — Jam	2
62	60-9870	Screw — Adjustment	2
63	3296-59	Nut — Lock	2
64	323-4	Screw — Cap Hex Hd.	2
65	66-3810	Guide W.A. — Belt	1
66	66-3600	Coring Head W.A.	1
67	3256-22	Washer — Plain	2
68	66-4470	Bracket — Switch Activator	1
69	66-9090	Switch	1
70	66-4450	Bracket — Switch	1
71	66-4360	Bracket R.H. — Pulley	1
72	59-2570	Spacer — Short	1
73	37-5760	Pulley — Idler	1
74	59-2580	Spacer — Long	1
75	66-4350	Bracket L.H. — Pulley	1
*		Coring Head Stand Model No. 09152 (Optional)	1

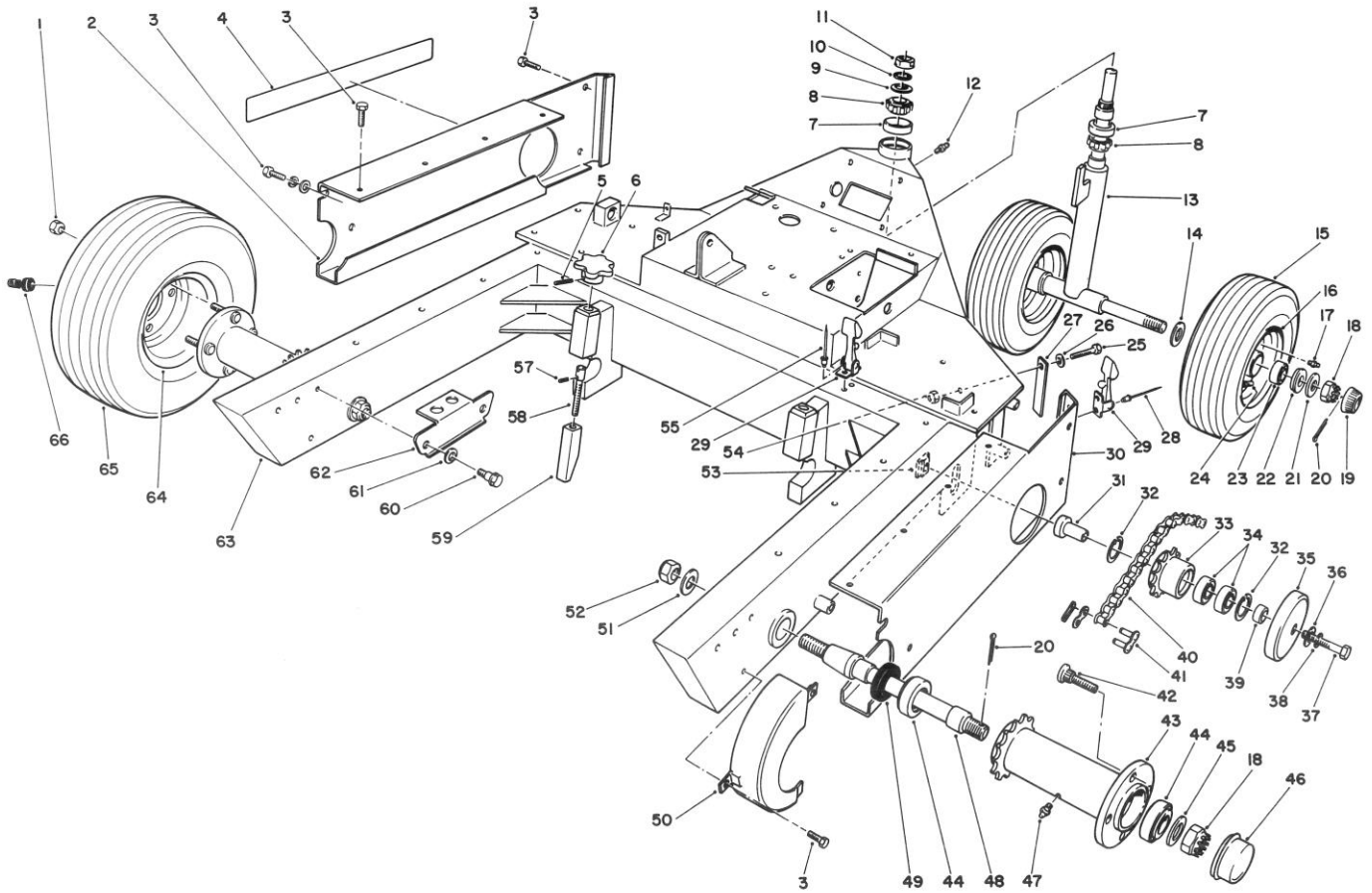
* Not Illustrated



CHASSIS ASSEMBLY

Ref. No.	Part No.	Description	No. Used
1	242-50	Nut — Lug	8
2	66-9070	Guard — Chassis L.H.	1
3	46-8560	Screw — Cap Hex. Hd.	18
4	59-4440	Decal — Greens Aerator	2
5	32121-6	Pin — Roll	2
6	59-4380	Knob	2
7	254-61	Cup — Bearing	2
8	254-70	Cone — Bearing	2
9	3290-464	Washer — Tongued	1
10	3290-463	Washer — Lock	1
11	3290-462	Nut — Lock	1
12	302-2	Fitting — Grease	1
13	59-2160	Front Axle Assembly	1
14	22-6090	Washer — Thrust	2
15	231-126	Tire	2
16	241-123	Rim	2
17	302-5	Fitting — Grease	2
18	32136-5	Nut — Hex Slotted	4
19	61-9780	Cap — Hub	2
20	3272-13	Pin — Cotter	4
21	28-2480	Washer	2
22	59-9650	Retainer — Bearing	4

Ref. No.	Part No.	Description	No. Used
23	252-105	Bearing — Roller	4
24	232-35	Stem — Valve	2
25	321-6	Screw — Hex Hd.	2
26	3256-22	Washer — Flat	2
27	59-9460	Guide	2
28	3290-271	Rivet — Pop	2
29	59-9740	Latch Assembly	3
30	59-3240	Guard — Chassis R.H.	1
31	59-2420	Bushing	2
32	32120-11	Ring — Retaining	4
33	59-2390	Sprocket — Idler	2
34	251-53	Bearing — Ball	4
35	59-9620	Cover — Idler	2
36	3256-26	Washer — Flat	2
37	325-13	Screw — Cap Hex. Hd.	2
38	3253-7	Washer — Lock	2
39	59-9630	Spacer	2
40	59-2090	Chain — Roller	2
41	2710-16	Link — Connecting	2
42	10-6830	Stud — Drive	8
43	59-4040	Hub Assembly (Incl. Ref. #42)	2
44	254-105	Bearing — Roller	4

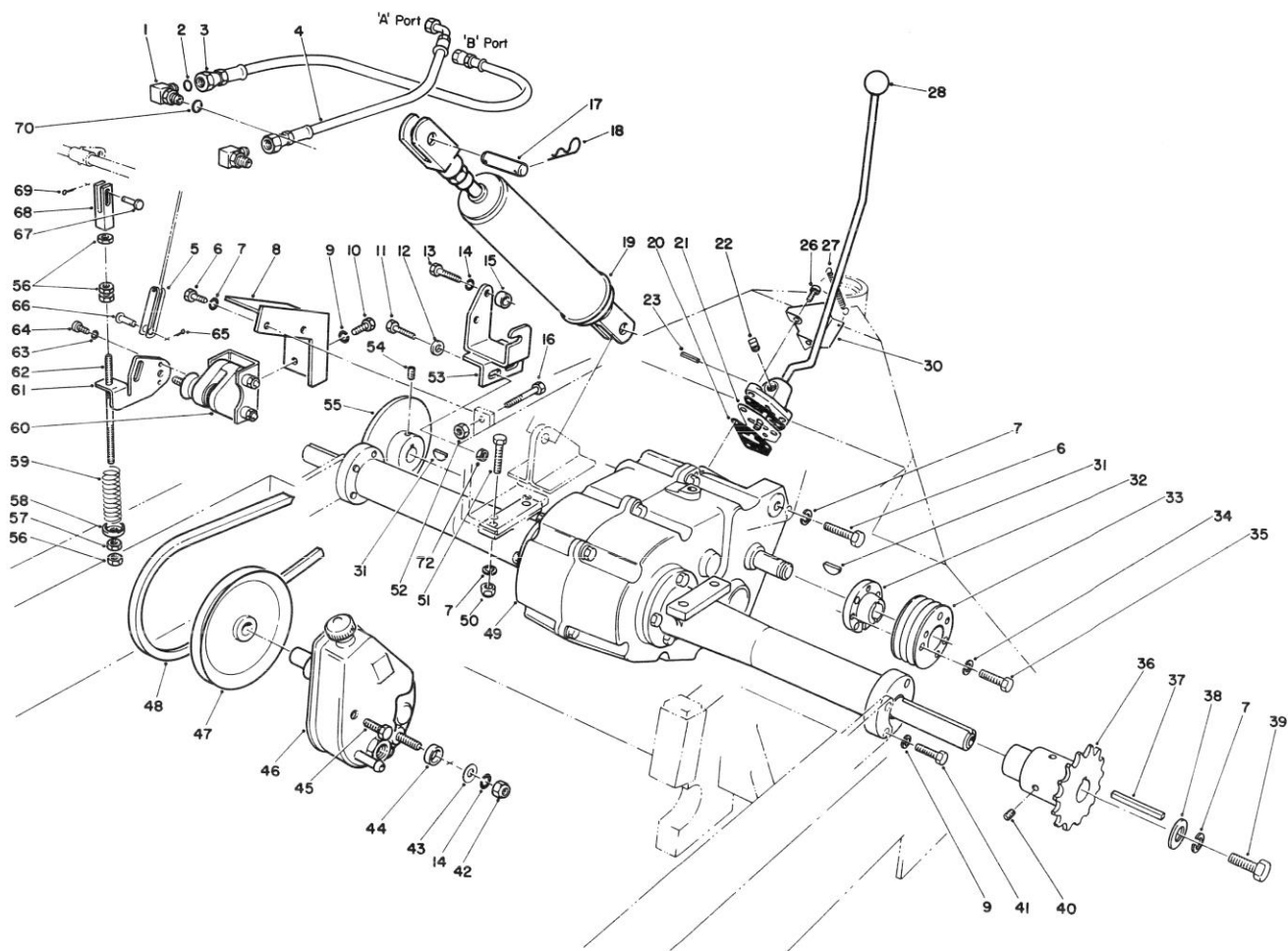


CHASSIS ASSEMBLY (Continued)

Ref. No.	Part No.	Description	No. Used
45	7-4150	Washer	2
46	59-2380	Cap — Dust	2
47	302-10	Grease Fitting	2
48	59-2700	Shaft	2
49	253-148	Seal — Shaft	2
50	59-3280	Guard — Sprocket R.H.	1
*	59-3270	Guard — Sprocket L.H.	1
51	3256-44	Washer — Flat	2
52	3296-15	Nut — Lock	2
53	59-2430	Nut — Special	2
54	3296-42	Nut — Lock	2
55	3269-8	Rivet — Pop	4

Ref. No.	Part No.	Description	No. Used
57	32121-4	Pin — Roll	2
58	59-2740	Shaft — Threaded	2
59	59-2750	Block	2
60	5-2490	Bolt — Shoulder	2
61	3-3287	Spacer	2
62	66-4530	Bracket — Lockup	2
63	66-3500	Chassis Assembly	1
64	217-60	Rim	2
65	231-119	Tire	2
66	232-24	Stem — Valve	2
*	60-9930	Frame Gauge	1

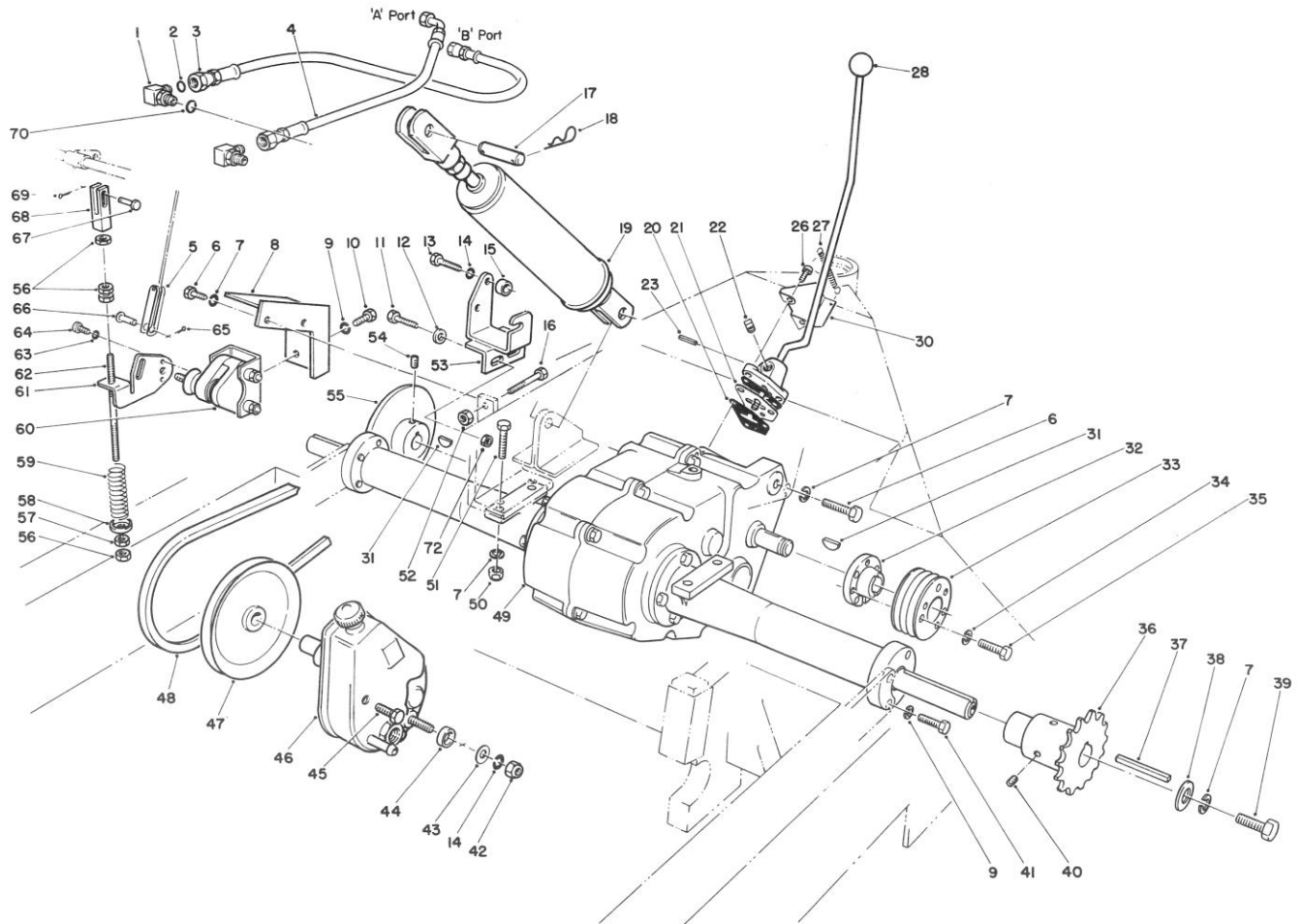
* Not Illustrated



TRANSAXLE, BRAKE & PUMP ASSEMBLY

Ref. No.	Part No.	Description	No. Used
1	340-82	Fitting (Incl. Ref. #2 & 70)	2
2	237-21	O-Ring	2
3	59-4170	Hose — Cylinder	1
4	59-4160	Hose — Cylinder	1
5	66-3930	Clevis	1
6	323-6	Screw — Cap Hex Hd.	3
7	3253-21	Washer — Lock	9
8	66-4860	Bracket W.A.	1
9	3253-4	Washer — Lock	6
10	322-3	Screw — Cap Hex Hd.	2
11	323-7	Screw — Cap Hex Hd.	2
12	3256-24	Washer — Flat	2
13	48-9470	Screw — Cap Hex Hd. (Metric)	2
14	3253-6	Washer — Lock	3
15	59-4320	Spacer	2
16	60-9880	Screw — Adjusting	1
17	59-3200	Pin — Lift Cylinder	2
18	3290-355	Pin — Hairpin Cotter	4
19	62-4660	Cylinder Assembly	1
20	27-6390	Gasket	2
21	66-3290	Plate — Guide Shift	1

Ref. No.	Part No.	Description	No. Used
22	281-2	Plug — Pipe	1
23	32121-20	Pin — Roll	1
26	27-6370	Screw — Socket Hd.	3
27	66-4460	Spring	1
28	233-13	Knob	1
30	66-3920	Bracket — Spring	1
31	3257-5	Key	2
32	59-2150	Bushing	1
33	59-2140	Pulley	1
34	3253-3	Washer — Lock	3
35	321-13	Screw — Cap Hex Hd.	3
36	59-3110	Sprocket W.A.	2
37	5-0786	Key	2
38	3-4685	Washer — Thrust	2
39	323-5	Screw — Cap Hex Hd.	2
40	3247-2	Screw — Set	4
41	322-5	Screw — Cap Hex Hd.	4
42	21-0360	Nut — Hex (Metric)	1
43	3256-25	Washer — Flat	1
44	59-4310	Spacer	1
45	60-9920	Screw (Metric)	1

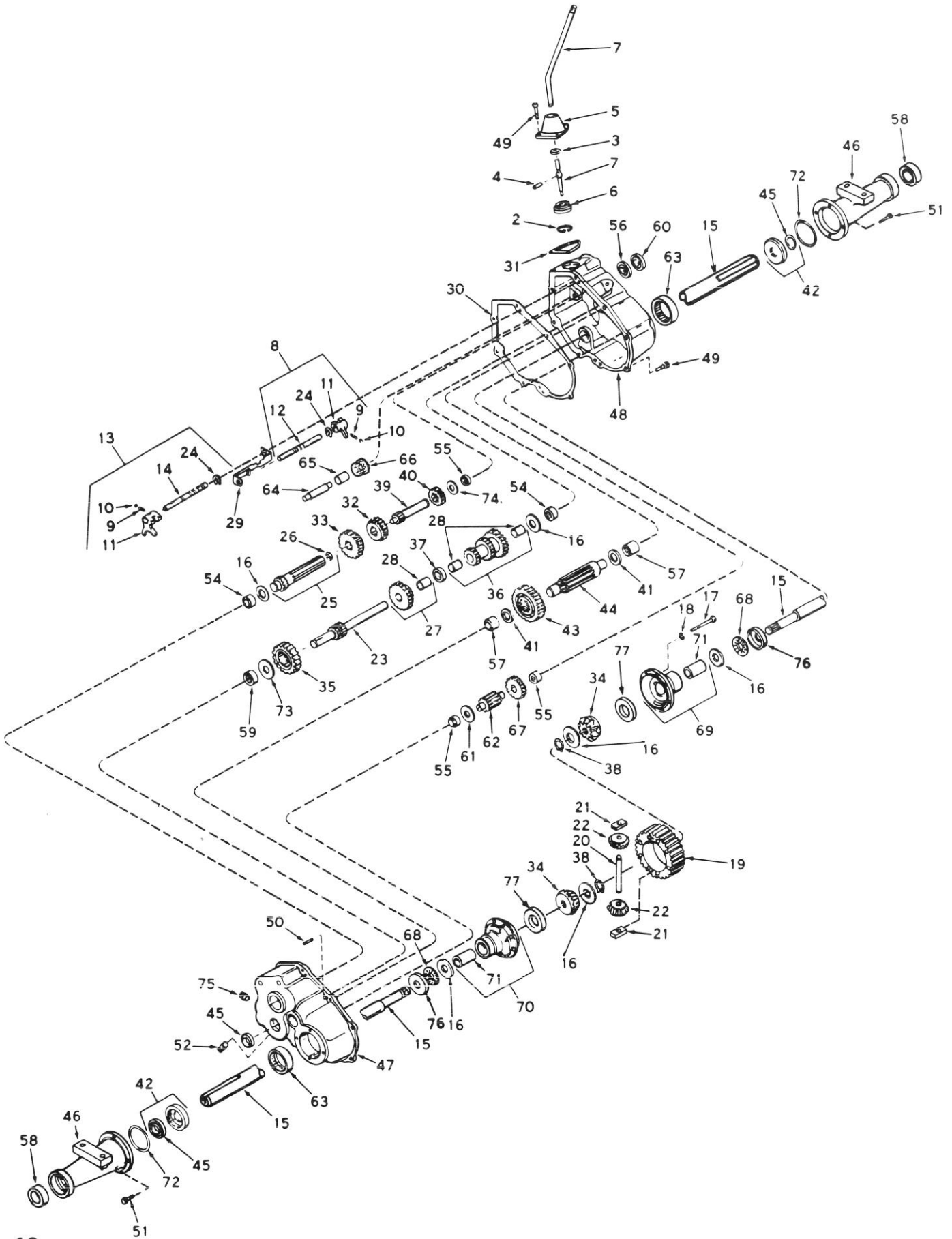


TRANSAXLE, BRAKE & PUMP ASSEMBLY (Continued)

Ref. No.	Part No.	Description	No. Used
46	44-7800	Pump — Power Steering	1
47	38-1830	Pulley W.A. — Power Steering Pump	1
48	59-4200	V-Belt	1
49	66-4590	Transaxle	1
50	3217-7	Nut	4
51	323-10	Screw — Cap Hex Hd.	4
52	3218-3	Nut — Jam	1
53	59-4280	Bracket — Pump Support	1
54	3245-33	Screw — Set	2
55	59-4100	Brake W.A. — Disc	1
56	3220-1	Nut — Jam	4
57	3219-1	Nut — Hex	1
58	66-3390	Retainer — Brake Spring	1

Ref. No.	Part No.	Description	No. Used
59	66-4150	Spring	1
60	66-4230	Brake — Caliper	1
61	66-3350	Arm — Brake	1
62	66-3400	Rod — Brake Take-up	1
63	3253-2	Washer — Lock	2
64	3290-321	Screw — Machine Hd.	2
65	3272-10	Pin — Cotter	1
66	283-2	Pin — Clevis	1
67	283-67	Pin — Clevis	1
68	66-4600	Clevis — Brake	1
69	3272-4	Pin — Cotter	1
70	237-42	O-Ring	2
72	3296-39	Nut — Lock	2

TRANSAXLE ASSEMBLY MODEL NO. 2361

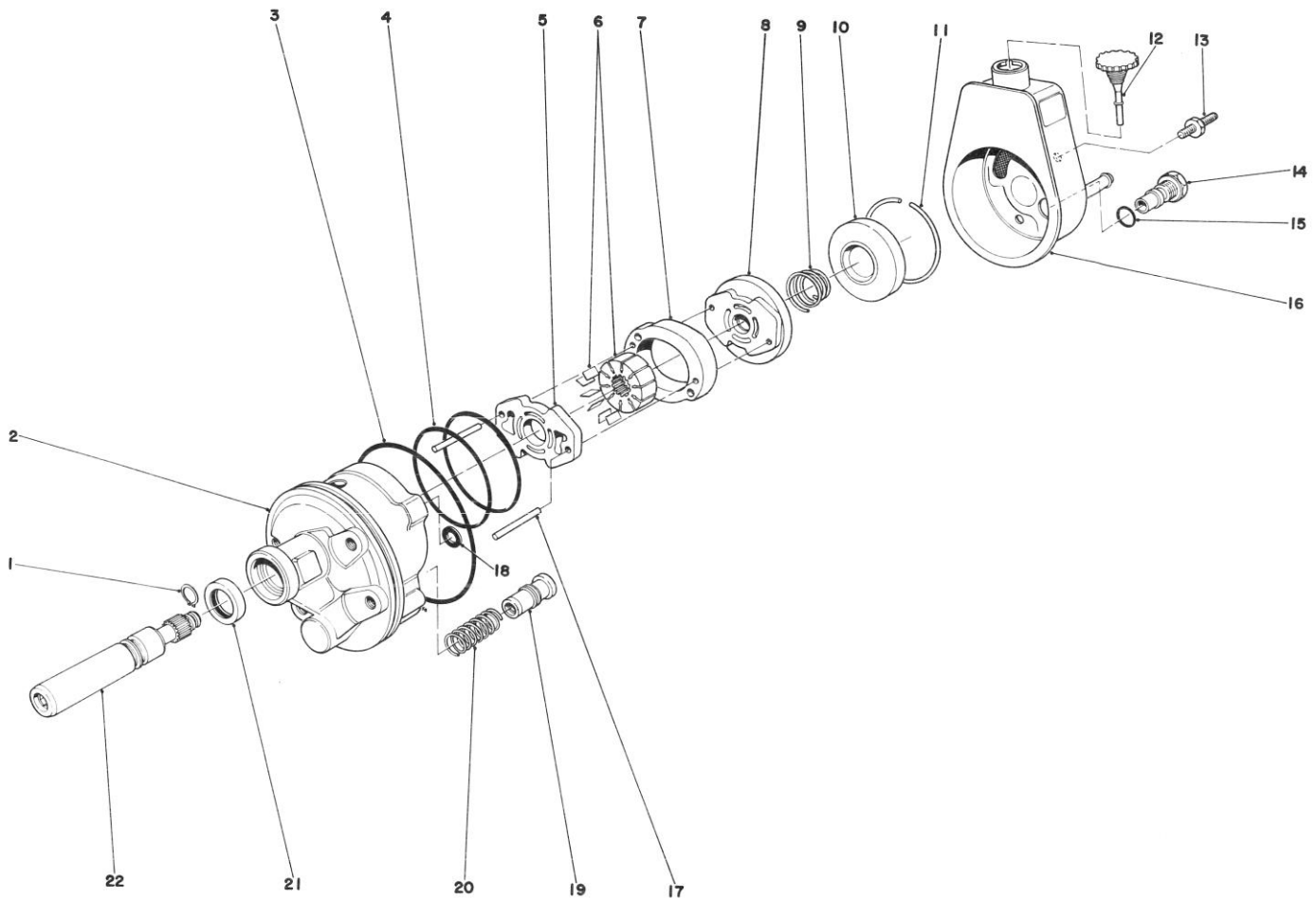


TRANSAXLE ASSEMBLY MODEL NO. 2361

Ref. No.	Part No.	Description	No. Used
2	792016	Ring — Snap	1
3	792001	Ring — Quad	1
4	792049	Pin — Roll	1
5	784344	Housing — Shift Lever	1
6†	66-9080	Keeper — Shift Lever	1
7	784343	Lever — Shift	1
8	784054	Rod Assy. — Shift (Incl. Ref. #9-12 & 24)	1
9	792003	Spring	2
10	792004	Ball — Steel	2
11	784004	Fork — Shifter	2
12	784055	Rod — Shifter (3rd & 4th)	1
13	784056	Rod Assy. — Shift (Incl. Ref. #9, 10, 11, 14 & 24)	1
14	784057	Rod — Shift (Low)	1
15	774694	Axle (17-7/8" Long)	2
16	780042	Washer — Thrust	6
17	792005	Screw — Hex Hd.	8
18	792006	Lockwasher	8
19	778033A	Gear — Ring	1
20	786019	Pin — Drive	1
21	786027	Block — Drive	2
22	778197	Pinion — Bevel	2
23	776029A	Shaft & Gear — Brake	1
24	792017	Ring — Snap	2
25	776189A	Shaft & Bearing Assy. — Pinion (Incl. Ref. #26)	1
26	780018	Bearing — Needle	1
27	778034	Gear Cluster Assembly (Incl. Ref. #28)	1
28	780053	Bushing	3
29	784074	Stop — Shifter	1
30	788023	Gasket — Case & Cover	1
31	788022	Gasket — Shift Lever Housing	1
32	778217	Gear — Shifting (3rd & 4th)	1
33	778020	Gear — Shifting (1st, 2nd & Rev.)	1
34	778231	Gear — Bevel	2
35	778037	Gear — Idler	1
36	778218	Gear Cluster Assembly (Incl. Ref. #28)	1
37	786024	Spacer	1
38	792018	Ring — Snap	2
39	776067	Shaft — Input	1

Ref. No.	Part No.	Description	No. Used
40	778024A	Spur Gear — Input Shaft	1
41	780052	Washer — Thrust	2
42	788021	Seal & Retainer Assy. — Oil (Incl. Ref. #45)	2
43	778036	Gear — Output	1
44	776028	Pinion — Output	1
45	788008	Seal — Oil	3
46	782058	Housing — Axle (10.906" long)	2
47	772016A	Cover Assy. — Transaxle (Incl. Ref. #54, 55, 57, 59 & 63)	1
48	770012	Case Assy. — Transaxle (Incl. Ref. #54, 55, 57 & 63)	1
49	792007	Screw — Flanged Hex Hd.	11
50	786026	Pin — Dowel	2
51	792037	Screw — Hex Hd.	8
52	792019	Plug — Magnetic Drain	1
54	780049	Bearing — Needle	2
55	780140	Bearing — Needle	3
56	780024	Bearing — Ball	1
57	780047	Bearing — Needle	2
58	780050	Bearing — Ball	2
59	780046	Bearing — Needle	1
60	788025	Seal — Oil	1
61	780001	Washer	1
62	776031	Shaft & Pinion	1
63	780048	Bearing — Needle	2
64	776030	Shaft — Reverse Idler	1
65	786025	Spacer — Reverse Idler	1
66	778051	Idler — Reverse	1
67	778038	Gear — Spur (22 Teeth)	1
68	780039	Bearing — Thrust	2
69	774072A	Carrier Assy. — Differential (Incl. Ref. #71)	1
70	774071A	Carrier Assy. — Differential (Incl. Ref. #71)	1
71	780041	Bushing	2
72	788024	"O" Ring	2
73	780007	Washer — Thrust	1
74	780051	Washer — Thrust	1
75	792122	Plug — Pipe (Hex countersunk headless)	1
76	780075	Race — Thrust	2
77	780107	Washer	2

† Obtain from your local Toro dealer.



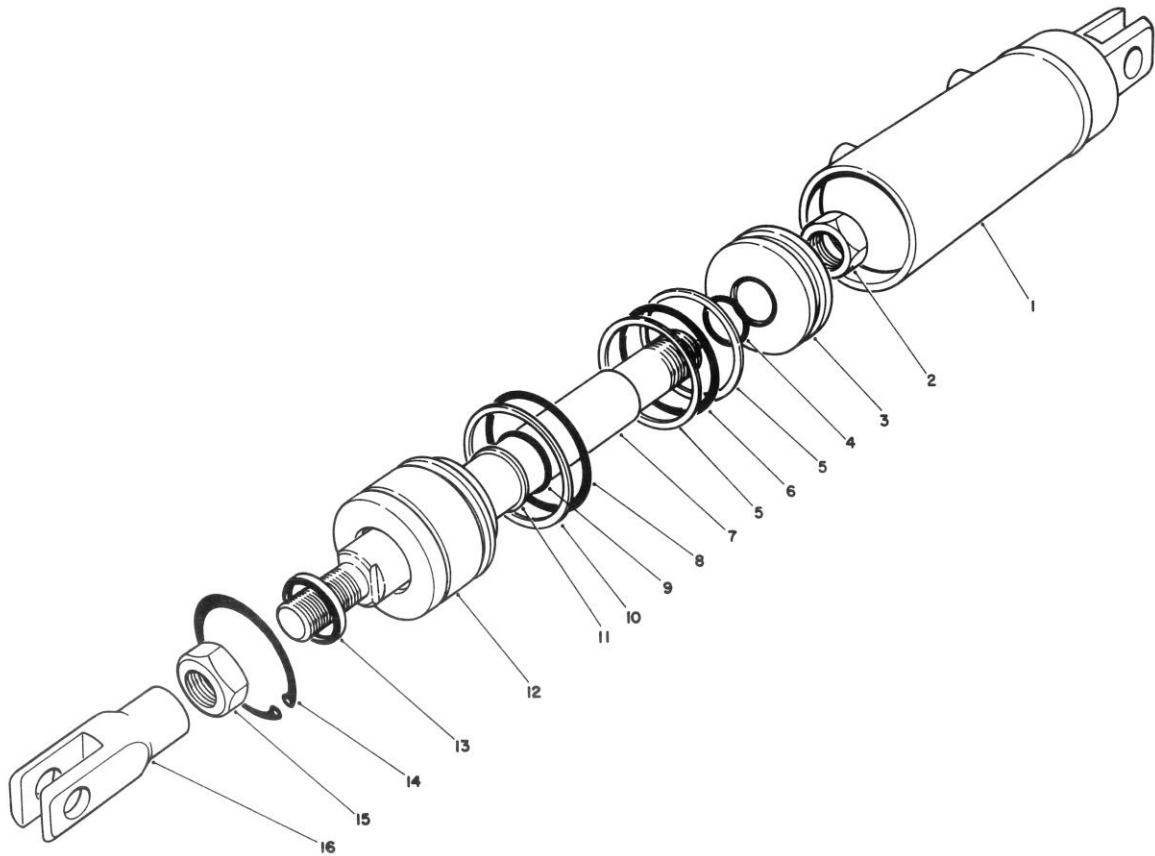
PUMP ASSEMBLY NO. 44-7800

Ref. No.	Part No.	Description	No. Used
1	44-7850	Ring — Shaft Retaining	1
2†		Housing — Hydraulic Pump (Incl. Ref. #21)	1
3	37-8360	Seal — O-Ring	1
4		Seal — O-Ring	2
5	44-7840	Thrust Plate	1
6	44-7810	Ring Service Kit Rotor Vane (Incl. Ref. #1 & 7)	1
7	37-8350	Pump Ring	1
8	44-7830	Pressure Plate	1
9	44-7820	Spring Pressure Plate	1
10	37-8380	End Plate	1
11	37-8440	Ring — Retaining	1
12	37-8420	Cap Assembly Reservoir	1
13	39-8700	Stud Pump Mounting	2

Ref. No.	Part No.	Description	No. Used
14	39-8680	Fitting Assy. (Incl. Ref. #15)	1
15	39-8710	Seal — O-Ring	1
16	37-8400	Reservoir Service Kit Hyd. Pump (Incl. Ref. #3 & 18)	1
17	37-8300	Pin Pump Ring Dowel	2
18		Seal	2
19	37-8410	Valve Assembly Control	1
20	37-8450	Spring Flow Control	1
21	37-8340	Seal — Drive Shaft	1
22	44-2680	Shaft Service Retaining Ring & Drive Kit (Incl. Ref. #1)	1
*	37-8460	Seal Service Kit (Incl. Ref. #3, 4, 15, 18 & 21)	1
*	44-7860	Retaining Ring Service Kit (Incl. Ref. #1)	1

* Not Illustrated

† Part only available by ordering 44-7800 Pump Assembly.



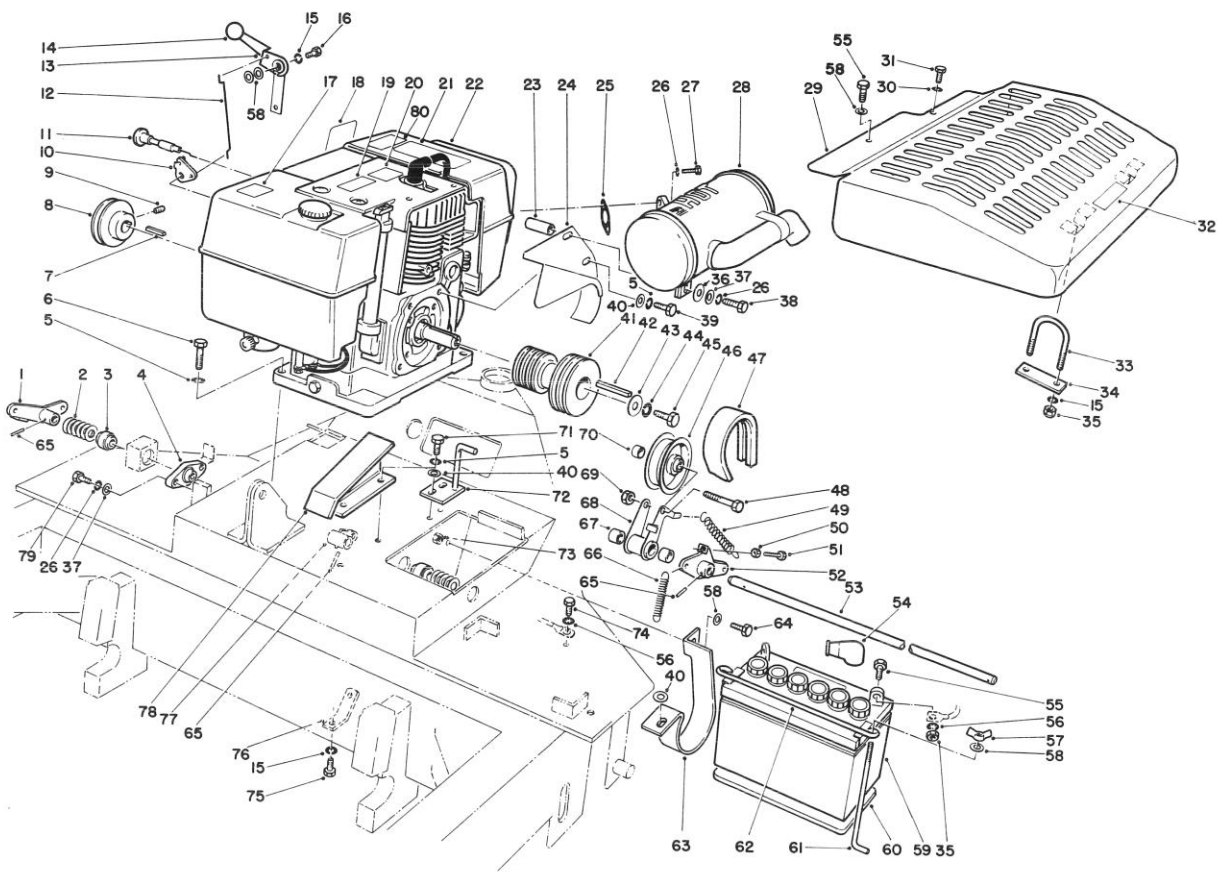
HYDRAULIC CYLINDER ASSEMBLY NO. 62-4660

Ref. No.	Part No.	Description	No. Used
1†		Barrel Assembly	1
2	60-9760	Nut — Lock	1
3	62-4690	Piston	1
4		O-Ring	1
5		Ring — Back-Up	2
6		O-Ring	1
7	62-4700	Rod	1
8		O-Ring	1
9		O-Ring	1

Ref. No.	Part No.	Description	No. Used
10		Ring — Back-Up	1
11		Ring — Back-Up	1
12	62-4680	Head	1
13		Dust Seal	1
14	32120-65	Ring — Retaining	1
15	3220-7	Nut — Jam	1
16	62-4670	Clevis — Rod	1
*	62-4720	Seal Repair Kit (Incl. Ref. #4-6, 8-11, 13 & 14)	1

* Not Illustrated

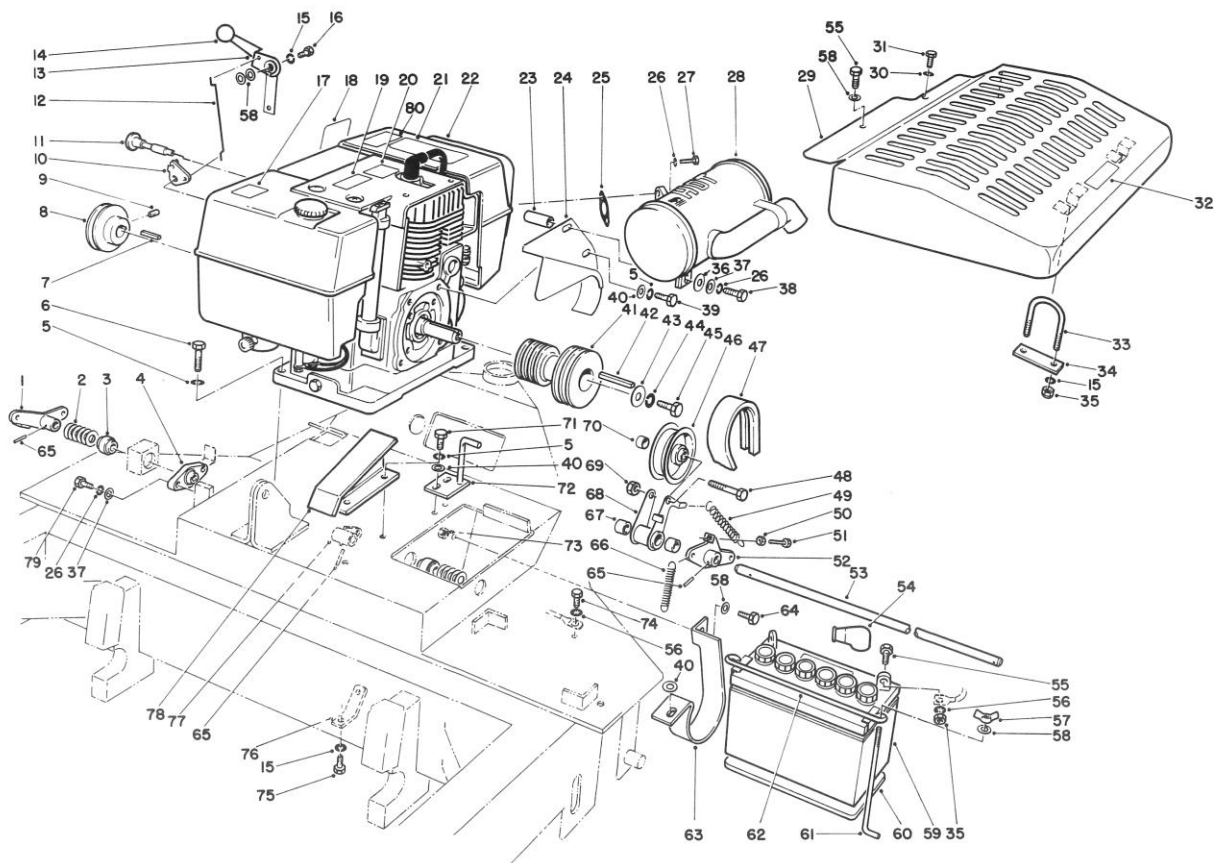
† Order Complete Assembly



CLUTCH & ENGINE ASSEMBLY

Ref. No.	Part No.	Description	No. Used
1	66-3980	Arm — Brake Clutch	1
2	3256-69	Washer — Flat	11
3	66-4730	Bearing	3
4	66-4520	Housing Bearing	1
5	3253-21	Washer — Lock	10
6	323-7	Screw — Cap Hex Hd.	4
7	13-2840	Key	1
8	61-9150	Pulley	1
9	3245-1	Screw — Set	2
10	59-4740	Beil Crank	1
11	59-4400	Control — Choke	1
12	59-4730	Wire — Linkage	1
13	62-4800	Handle — Throttle	1
14	233-25	Knob	1
15	3253-3	Washer — Lock	6
16	321-9	Screw — Cap Hex Hd.	1
17	53-4420	Decal — Gas	1
18	59-9530	Decal — Throttle	1
19	61-9100	Decal — Refueling	1
20	66-9000	Label — Break-in	1
21	66-9050	Decal — Shift	1
22	12-7499	Engine — 16 hp (Kohler Model #M16S-711512)	1

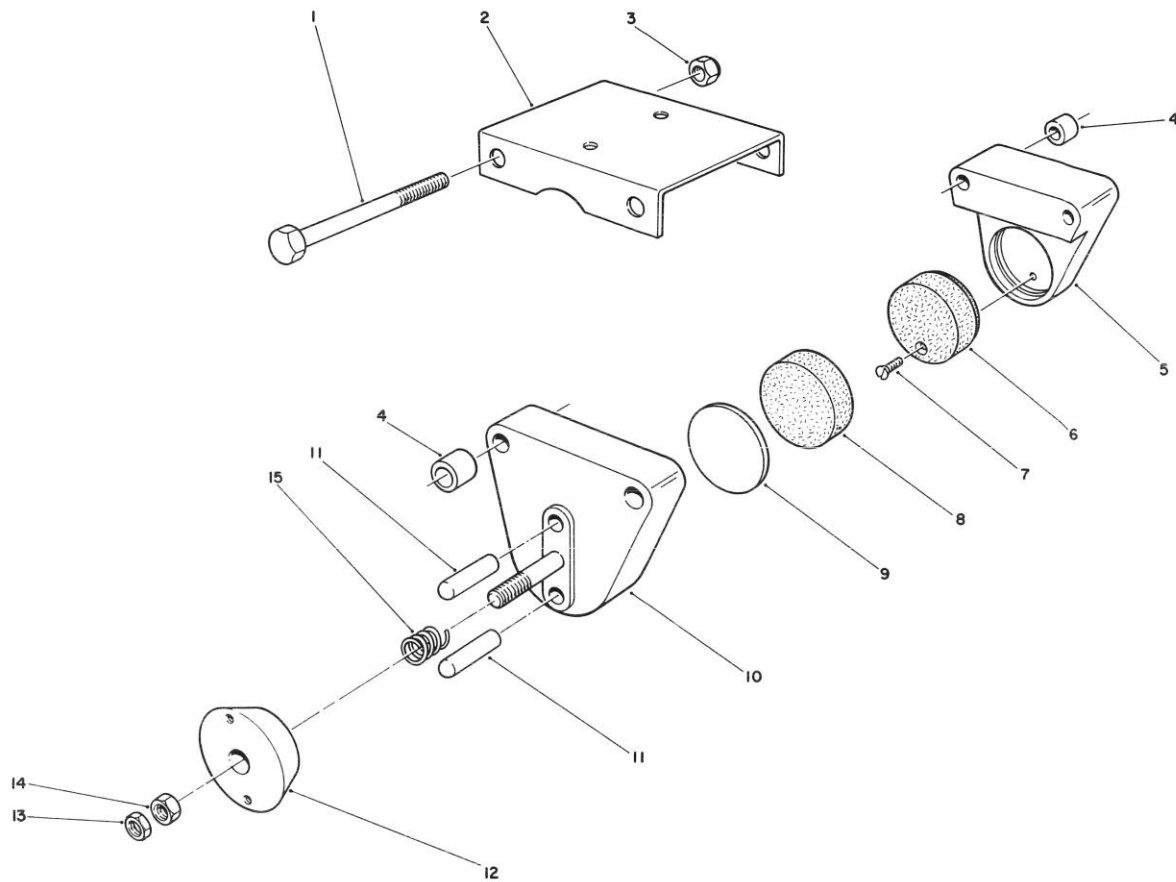
Ref. No.	Part No.	Description	No. Used
23	36-3920	Spacer	1
24	66-4650	Guide — Belt	1
25	2210-275	Gasket	1
26	3253-4	Washer — Lock	5
27	322-3	Screw — Cap Hex Hd.	2
28	66-4630	Muffler	1
29	60-9950	Guard — Muffler	1
30	3254-1	Washer — Lock	1
31	32144-64	Screw — Hex Hd. Self-Tapping	1
32	54-0910	Decal — Hot Surface	1
33	60-9940	Bolt — U	1
34	60-9980	Bar	1
35	3217-5	Nut — Hex	6
36	3256-25	Washer — Flat	1
37	3256-23	Washer — Flat	3
38	322-12	Screw — Cap Hex Hd.	1
39	323-5	Screw — Cap Hex Hd.	2
40	3256-24	Washer — Flat	5
41	66-3910	Pulley — Engine	1
42	13-6330	Key	1
43	3256-6	Washer — Flat	1
44	3253-6	Washer — Lock	1
45	3212-8	Screw — Cap Hex Hd.	1



CLUTCH & ENGINE ASSEMBLY (Continued)

Ref. No.	Part No.	Description	No. Used
46	66-4210	Pulley — Idler	1
47	66-4340	V-Belt	1
48	323-12	Screw — Cap Hex Hd.	1
49	66-4190	Spring	1
50	3218-2	Nut — Jam	1
51	322-7	Screw — Cap Hex Hd.	1
52	66-3360	Arm W.A. — Brake Clutch	1
53	66-3440	Cross Shaft — Clutch	1
54	218-331	Boot — Battery	1
55	321-3	Screw — Cap Hex Hd.	3
56	3254-8	Washer — Lock Int. Tooth	3
57	32103-12	Nut — Wing	2
58	3256-22	Washer — Flat	6
59	28-1400	Battery — 12 Volt	1
60	59-9470	Pad — Battery	1
61	7-3328	Bolt — Battery	2
62	7-0534	Clamp W.A. — Battery	1
63	66-3340	Bracket — Drive Belt Retainer	1

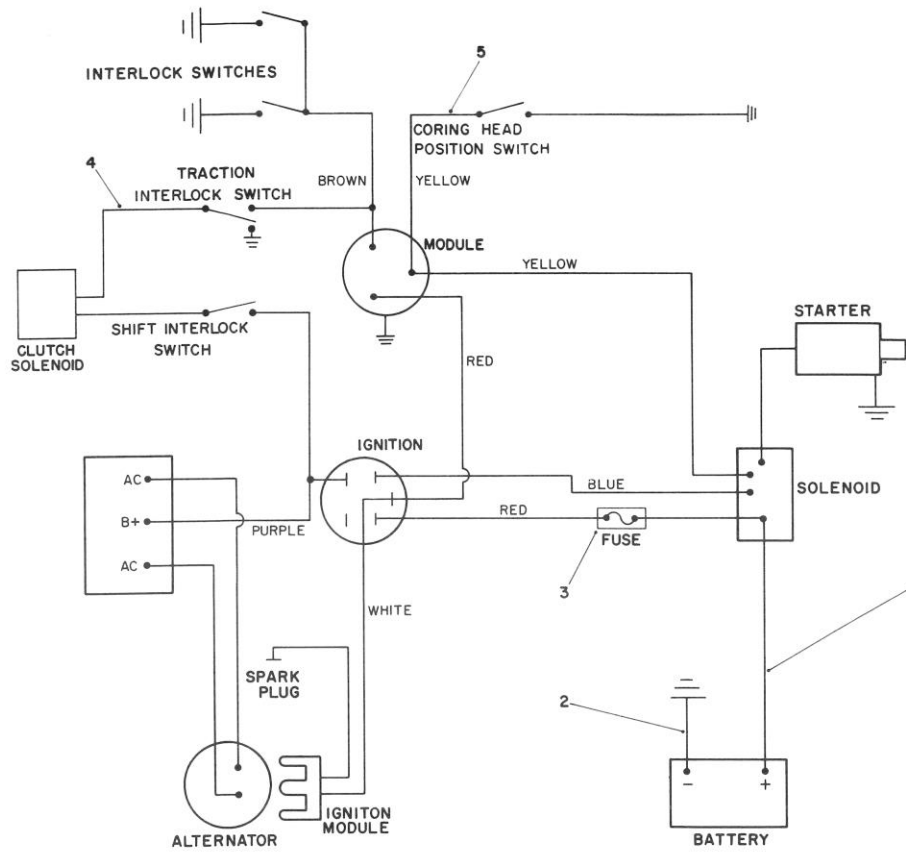
Ref. No.	Part No.	Description	No. Used
64	321-5	Screw — Cap Hex Hd.	1
65	32121-16	Roll Pin	3
66	66-4180	Spring	1
67	256-216	Bushing	2
68	66-3590	Bracket W.A. — Drive Take-up (Incl. Ref. #67)	1
69	3296-39	Nut — Lock	1
70	59-4320	Spacer	1
71	323-4	Screw — Cap Hex Hd.	4
72	66-3560	Guide — Belt	1
73	3296-42	Nut — Lock	1
74	32104-17	Screw — Hex Hd. Self-Tapping	1
75	321-3	Screw — Cap Hex Hd.	1
76	66-3420	Bracket — Spring Brake	1
77	66-3950	Arm W.A. — Brake	1
78	66-4400	Guide — Belt	1
79	322-5	Screw — Cap Hex Hd.	2
80	66-9110	Decal — Start	1



BRAKE CALIPER ASSEMBLY NO. 62-4750

Ref. No.	Part No.	Description	No. Used
1	3210-13	Screw — Cap Hex Hd.	2
2	62-4770	Bracket — Floating Mount	1
3	3296-4	Nut — Lock	2
4	61-9060	Sleeve	4
5	61-8960	Housing — Dead	1
6	61-8970	Puck — Dead	1
7	61-9070	Screw — Flat Hd. Mach.	1
8	61-8980	Puck — Live	1

Ref. No.	Part No.	Description	No. Used
9	61-8990	Plate — Backing	1
10	61-9000	Housing — Live	1
11	61-9010	Pin — Actuating	2
12	61-9030	Cam — Brake	1
13	3220-2	Nut — Jam	1
14	3219-2	Nut — Hex	1
15	61-9020	Spring — Compression	1

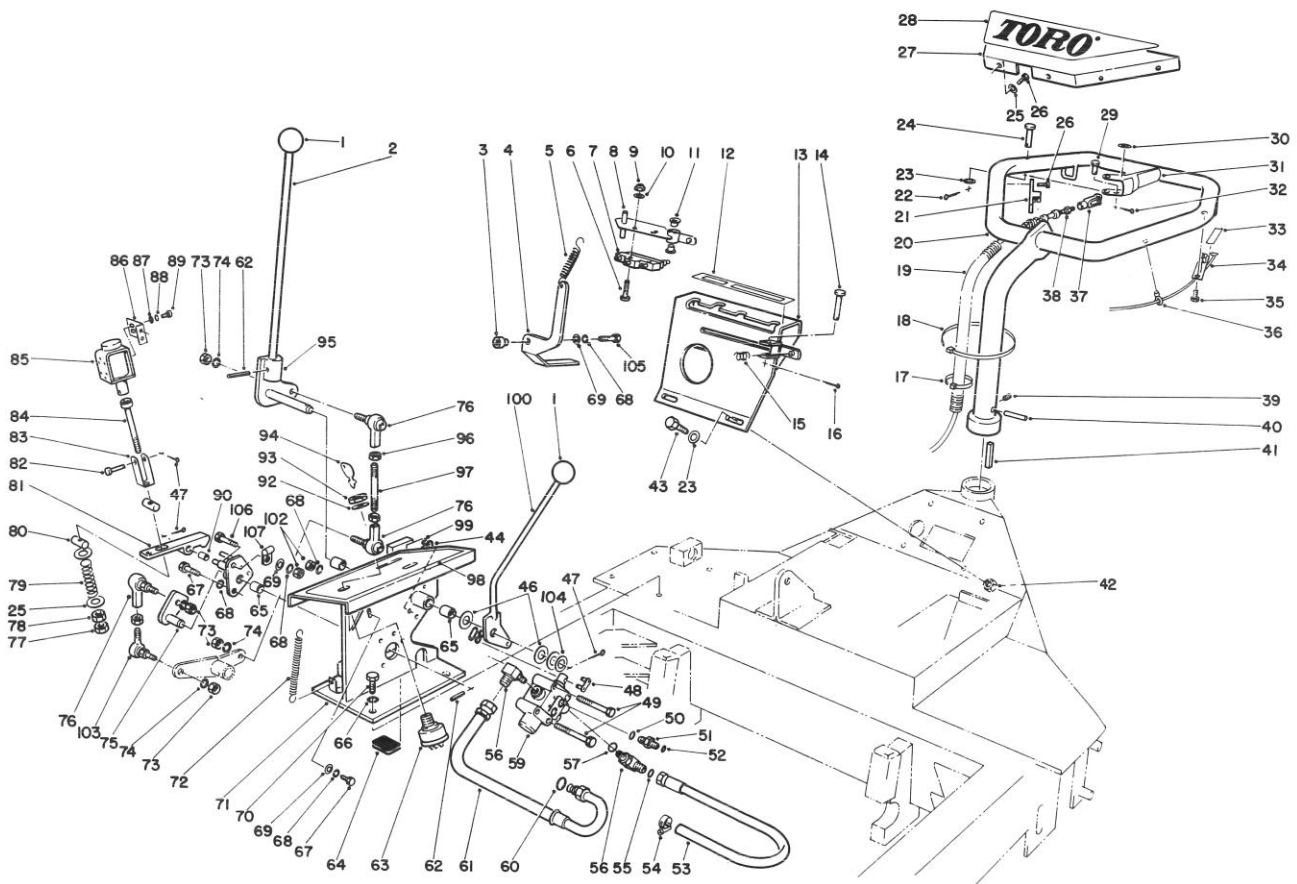


ELECTRICAL SCHEMATIC

Ref. No.	Part No.	Description	No. Used
1	66-4260	Wire Harness — Main	1
2	28-3860	Wire — Ground	1
3†		Fuse — 20 Amp	1

Ref. No.	Part No.	Description	No. Used
4	66-4660	Wire Harness — Shift Pattern	1
5	66-4670	Wire Harness	1

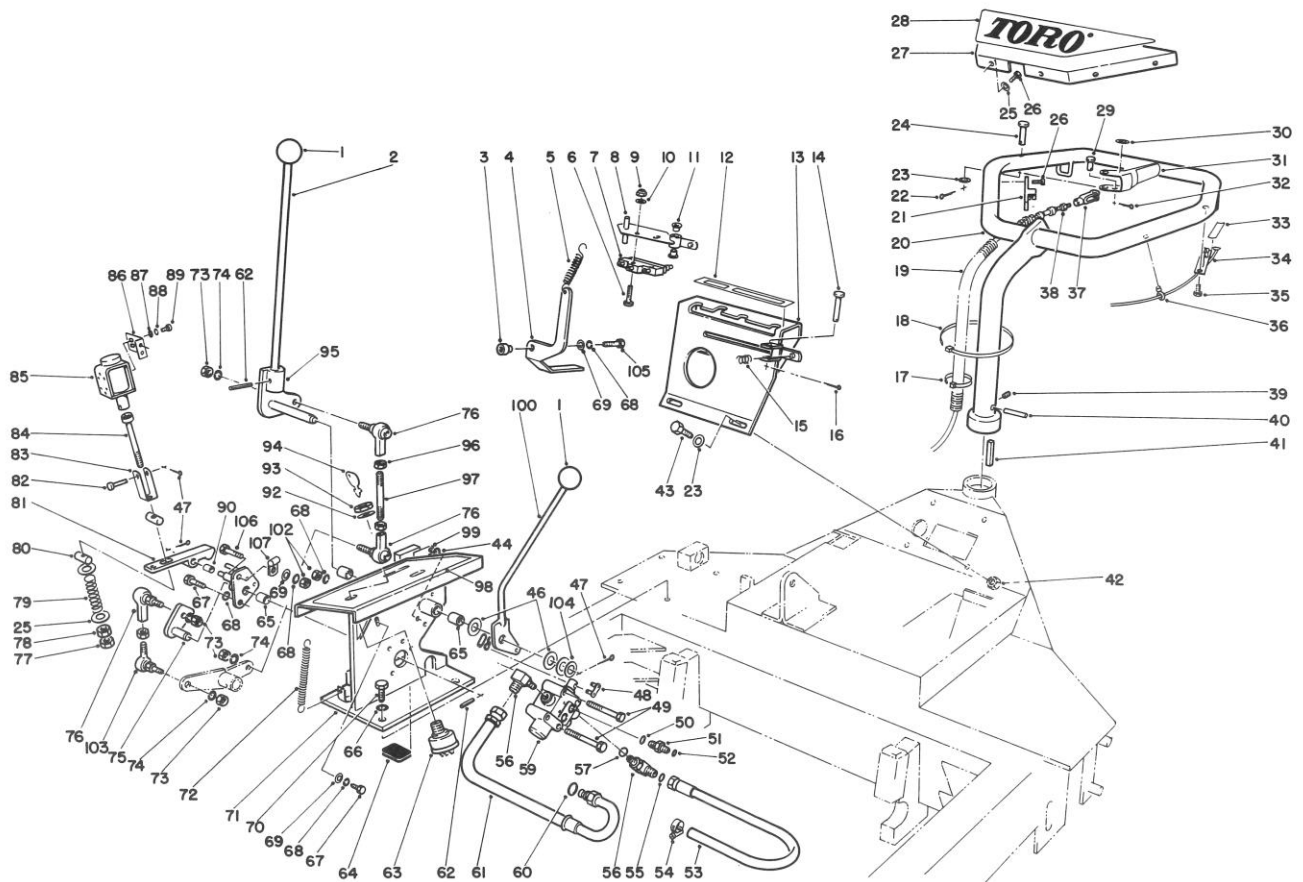
† Obtain Locally



OPERATOR CONTROLS ASSEMBLY

Ref. No.	Part No.	Description	No. Used
1	233-42	Knob	2
2	66-3410	Handle Clutch	1
3	66-9120	Spacer	1
4	66-3280	Bracket — Throttle Control	1
5	59-3660	Spring — Extension	1
6	32105-17	Screw — Mach. Pan Hd.	2
7	29-6161	Switch	1
8	66-4780	Hub & Plate W.A. (Incl. Ref. #11)	1
9	3296-9	Nut — Lock	2
10	3256-53	Washer — Flat	2
11	256-301	Bushing	2
12	66-4710	Decal — Shift Pattern	1
13	66-4750	Plate W.A. — Shift	1
14	283-66	Pin — Clevis	1
15	66-4850	Spring	1
16	3272-6	Pin — Cotter	1
17	3290-381	Tie — Cable	4
18	3290-379	Tie — Cable	3
19	24-7923	Conduit — Convoluted	1
20	59-4490	Handle W.A.	1
21	59-9730	Bracket W.A. — Cable	1
22	3272-10	Pin — Cotter	1
23	3256-23	Washer — Flat	5
24	283-11	Pin — Clevis	1
25	3256-14	Washer — Flat	6
26	32144-64	Screw — Hex Hd. Self-Tapping	6

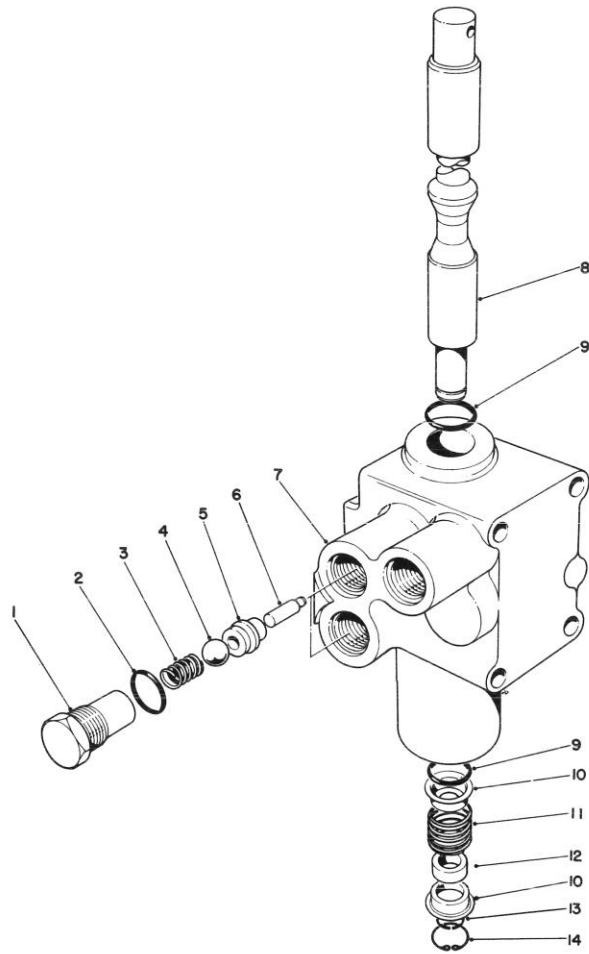
Ref. No.	Part No.	Description	No. Used
27	59-4530	Panel — Handle	1
28	59-4420	Decal — Toro	1
29	283-29	Pin — Clevis	1
30	59-9860	Decal — Brake	1
31	59-9560	Handle — Control	1
32	3272-2	Pin — Cotter	1
33	59-9870	Decal — Interlock	2
34	40-9690	Interlock Handle & Switch (Incl. Ref. #36)	2
35	32104-17	Screw — Hex Hd. Self-Tapping	2
36	17-9120	Mount — Wire	6
37	282-26	Clevis	1
38	59-4410	Cable — Brake	1
39	3247-2	Screw — Set	1
40	32121-49	Roll Pin	1
41	3-3267	Key	1
42	3296-29	Nut — Lock	4
43	322-4	Screw — Cap Hex Hd.	4
44	3254-8	Washer — Lock	1
46	3256-6	Washer — Flat	3
47	3272-4	Pin — Cotter	3
48	2710-16	Link — Connecting	1
49	321-23	Screw — Cap Hex Hd.	4
50	237-78	O-Ring	2
51	340-92	Fitting — Straight (Incl. Ref. #50 & 52)	2
52	237-21	O-Ring	2



OPERATOR CONTROLS ASSEMBLY (Continued)

Ref. No.	Part No.	Description	No. Used
53	59-4150	Hose — Return	1
54	2412-36	Clamp — Hose	1
55	237-22	O-Ring	2
56	340-77	Fitting — 90° (Incl. Ref. #53 & 57)	2
57	237-42	O-Ring	2
59	43-1950	Valve — Control, Hyd.	1
60	39-7310	O-Ring (Metric)	1
61	59-4140	Hose — Pressure	1
62	32121-18	Pin — Spring	2
63	23-0660	Switch — Starter	1
64	66-4620	Cushion	1
65	256-172	Bushing	3
66	3253-21	Washer — Lock	4
67	321-3	Screw — Cap Hex Hd.	3
68	3253-3	Washer — Lock	9
69	3256-22	Washer — Flat	3
70	323-6	Screw — Cap Hex Hd.	4
71	66-3730	Panel W.A. — Control	1
72	66-4160	Spring	1
73	3219-14	Nut — Lock	4
74	3253-4	Washer — Lock	4
75	66-3250	Pivot — Clutch Linkage W.A.	1
76	2411-39	Rod End	3
77	3220-13	Nut — Jam	1
78	3219-14	Nut — Hex	1
79	66-4170	Spring	1

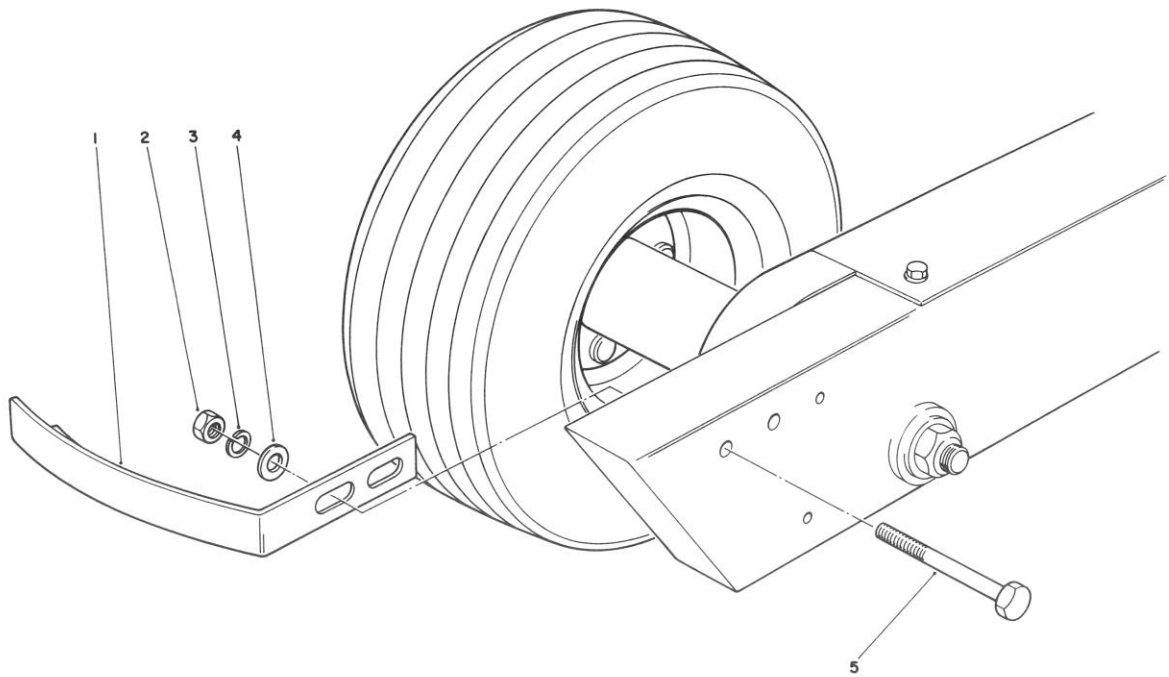
Ref. No.	Part No.	Description	No. Used
80	66-4740	Rod	2
81	66-4100	Latch — Clutch Solenoid	1
82	283-17	Pin — Clevis	1
83	66-4700	Clevis — Solenoid	1
84	3273-37	Screw — Cap Hex Socket Hd.	1
85	66-4200	Solenoid	1
86	66-4640	Bracket W.A. — Solenoid	1
87	3256-21	Washer — Flat	4
88	3253-15	Washer — Lock	4
89	218-462	Screw — Machine	4
90	256-251	Bushing	1
91	66-3680	Bracket W.A.	1
92	3254-5	Washer — Lock Int. Tooth	1
93	218-461	Nut — Hex	1
94	62-7770	Key	2
95	66-3650	Bracket W.A. — Clutch Handle	1
96	3220-2	Nut — Jam	3
97	66-3430	Rod — Linkage	1
98	66-4080	Decal — Control	1
99	66-4500	Module — Interlock	1
100	59-4610	Handle W.A. — Valve	1
102	3217-5	Nut — Hex	5
103	66-4720	Rod End	1
104	3256-26	Washer — Plain	1
105	321-8	Screw — Cap Hex Hd.	1
106	321-6	Screw — Cap Hex Hd.	1
107	2412-100	J-Clamp	1



CONTROL VALVE NO. 43-1950

Ref. No.	Part No.	Description	No. Used
1	22-8330	Plug	2
2	237-42	O-Ring	2
3	22-8340	Spring	2
4	22-8350	Ball	2
5	22-8370	Seat-Check Valve	2
6	22-8360	Pin Cam	2
7		Body	1

Ref. No.	Part No.	Description	No. Used
8	22-8420	Spool	1
9	22-8500	O-Ring	2
10	22-8380	Retainer Spring	2
11	22-8410	Spring	1
12	23-3030	Spacer	1
13	22-8480	Snap Ring Spool	1
14	22-8490	Snap Ring	1

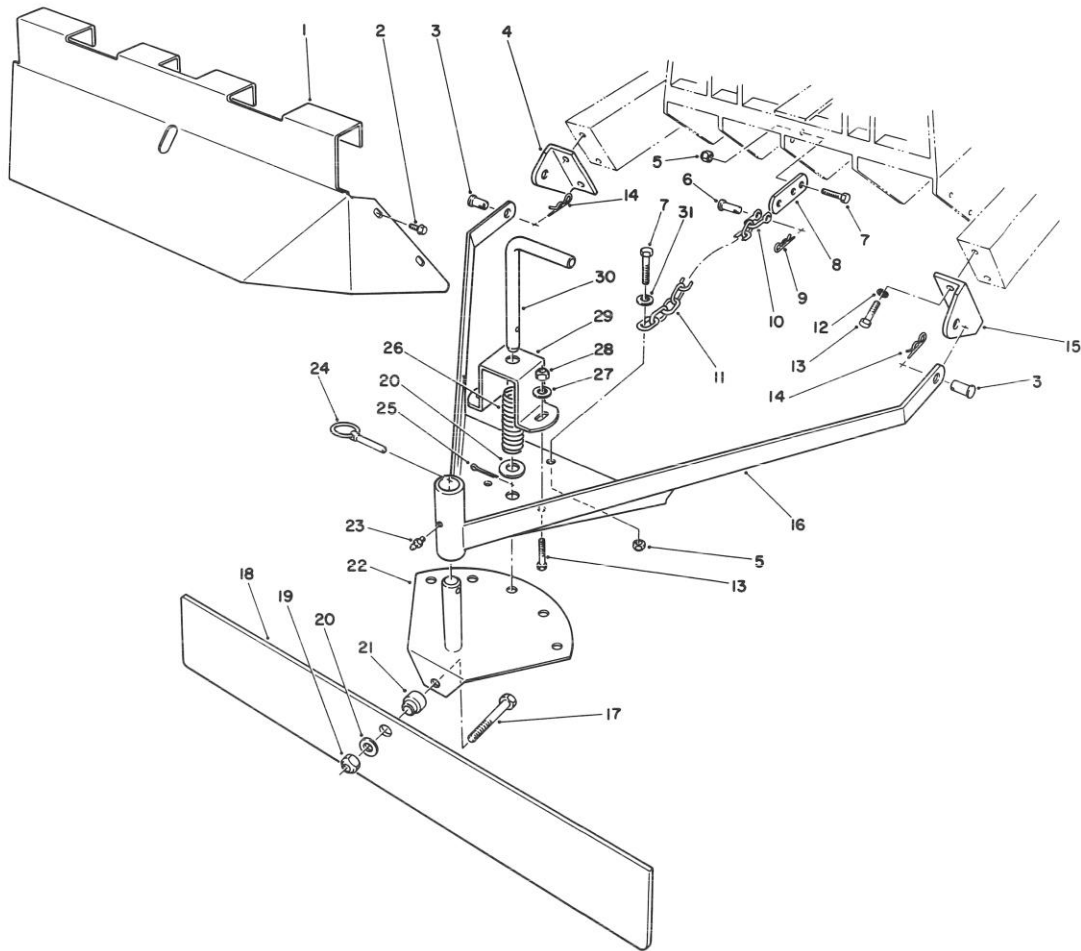


TIRE SCRAPER KIT MODEL NO. 09151 (Optional)

Ref. No.	Part No.	Description	No. Used
1	59-4270	Tire Scraper — L.H.	1
*	59-4260	Tire Scraper — R.H.	1
2	3217-7	Nut — Hex	4

Ref. No.	Part No.	Description	No. Used
3	3253-21	Washer — Lock	4
4	3256-3	Washer — Flat	4
5	323-13	Screw — Cap Hex Hd.	4

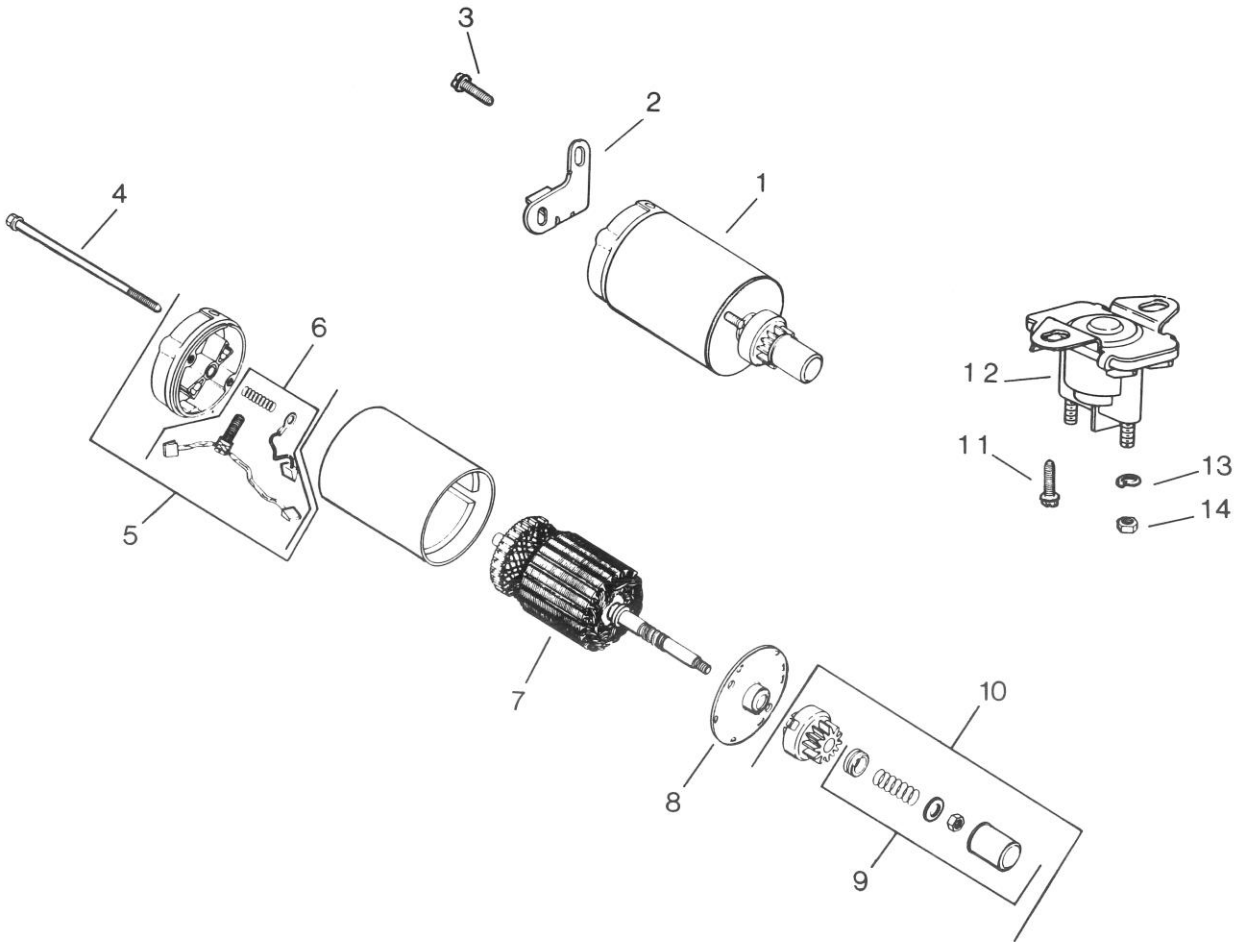
* Not Illustrated



WINDROWER KIT MODEL 09150 (Optional)

Ref. No.	Part No.	Description	No. Used
1	60-9840	Deflector — Core	1
2	32144-4	Screw — Self Tap Hex Hd.	4
3	283-60	Pin — Clevis	2
4	59-4850	Plate — Hook-Up	1
5	3296-29	Nut — Lock	3
6	283-10	Pin — Clevis	1
7	322-5	Screw — Cap Hex Hd.	3
8	60-9240	Support	1
9	3290-250	Pin — Hair	1
10	5-2942	Shackle	1
11	2820-3	Chain	1
12	3253-5	Washer — Lock	4
13	323-6	Screw — Cap Hex Hd.	6
14	3290-355	Pin — Hair	2
15	59-4840	Plate — Hook-Up	1
16	59-4760	Frame Assembly	1

Ref. No.	Part No.	Description	No. Used
17	325-8	Screw — Cap Hex Hd.	1
18	59-9430	Blade — Windrower	1
19	3296-23	Nut — Lock	1
20	3256-26	Washer — Flat	2
21	59-4860	Spacer	1
22	59-4810	Plate — Pivot	1
23	302-2	Fitting — Grease	1
24	3290-243	Pin — Klik	1
25	3272-11	Pin — Cotter	1
26	46-0740	Spring — Compression	1
27	3256-24	Washer — Flat	2
28	3296-26	Nut — Lock	2
29	59-9410	Bracket — Lock-Up	1
30	59-9420	Pin — Lock-Up	1
31	3256-23	Washer — Flat	1



ELECTRIC STARTER ENGINE KOHLER MODEL NO. M16S SPEC NO. 711512

Ref. No.	Part No.	Description	No. Used
1	41 098 04	Starter Assembly (Incl. Ref. #5-11)	1
2	45 126 17	Brace — Tail	1
3	X-67-62	Screw — Hex Wash. Hd.	2
4	41 086 19	Bolt — Thru	2
5	41 227 04	Cap — Commutator Assembly	1
6	52 755 15	Kit — Brush	1
7	45 170 02	Armature	1
8	41 227 03	Cap — Drive End	1

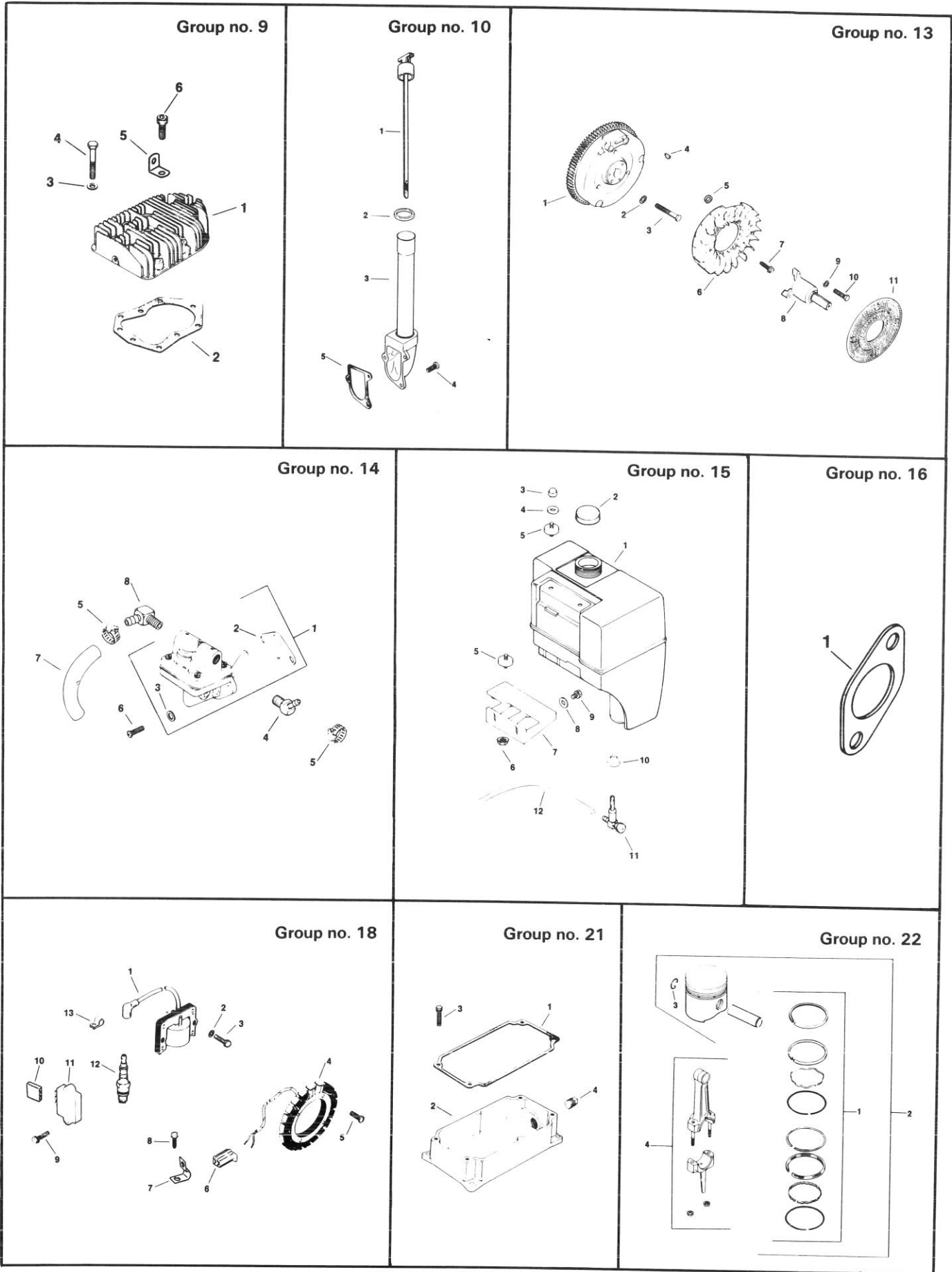
Ref. No.	Part No.	Description	No. Used
9	47 755 07	Kit — Drive	1
10	47 755 13	Kit — Drive Parts	1
11	X-67-83	Screw — Hex Wash. Hd.	2
12	45 435 07	Solenoid	1
13	X-20-1	Washer — Lock	2
14	X-81-1	Nut — Hex	2
	25 450 03	Tag — Caution	1
	52 518 03	Lead — Black, Starter to Solenoid	1

ENGINE KOHLER MODEL NO. M16S SPEC NO. 711512 (Continued)

Ref. No.	Part No.	Description	No. Used
Air Intake — Group 1			
1	X-276-7	Wing Nut	1
2	47 096 08	Cover — Air Cleaner	1
3	41 100 04	Nut — Jam	1
4	52 082 04	Cover — Inner	1
5	45 083 01	Precleaner — Element	1
6	45 083 02	Element	1
7	231032	Seal	1
8	X-67-65	Screw — Hex. Washer Hd.	3
9	47 094 20	Base — Air Cleaner	1
	41 113 02	Decal — Air Cleaner	1
Baffles & Shroud — Group 2			
1	45 063 07	Baffle — Head	1
2	X-25-53	Washer — Plain	1
3	47 086 08	Screw — Pozidriv T.H.	1
4	52 086 11	Screw — Hex. Washer Hd.	6
5	47 063 10	Baffle — Cylinder	1
6	47 063 07	Baffle — Inner	1
7	47 027 42	Blower Housing	1
8	47 063 06	Baffle — Side Air	1
Breather & Vent — Group 3			
1	235048	Gasket — Breather Plate	1
2	235631	Plate — Breather	1
3	235047	Reed	1
4	270146	Baffle — Breather	1
5	47 050 01	Filter — Breather	1
6	231032	Seal — Breather	1
7	275144	Gasket — Valve Cover	1
8	47 096 01	Cover — Valve	1
9	275220	Stud	1
10	X-799-1	Palnut	1
11	47 326 03	Hose — Breather 3-11/32" Lg.	1
Camshaft & Valves — Group 4			
1	47 010 11	Camshaft Assembly	1
2	47 089 01	Spring — Actuating	1
3	275066	Spacer .005	A/R
3	275067	Spacer .010	A/R
4	47 380 09	Pin — Camshaft	1
5	237672	Valve — Exhaust	1
6	235582	Valve — Intake	1
7	235011	Retainer — Upper Spring	2
8	235168	Spring — Valve	2
9	52 413 01	Rotator	2
10	D-235327	Tappet	2
11	41 755 10	Kit — Retainer	1
12	X-702-3	Plug — Cup	1

Ref. No.	Part No.	Description	No. Used
Carburetor — Group 5			
1	45 053 70	Carburetor Assembly (Incl. Ref. #5-17)	1
2	25 155 02	Connector — 90° (For 1/4" I.D. Rubber Hose)	1
3	47 049 01	Gasket — Carburetor	1
4	X-770-1	Screw — Slted. Hd.	2
5	45 103 01	Needle — Main Fuel Adj.	1
6	200383	Spring — Main Fuel	1
7	200380	Spring — Idle Fuel	1
8	275231	Needle — Idle Fuel Adj.	1
9	232555	Spring — Idle Speed	1
10	232556	Screw — Idle Speed Adj.	1
11	200375	Gasket — Bowl	1
12	25 757 03	Kit — Float	1
13	25 041 02	Gasket — Bowl Baffle	1
14	200376	Pin — Float Hinge	1
15	235448	Bowl — Fuel	1
16	47 100 06	Screw — Bowl Retainer	1
17	200372	Gasket — Bowl Retainer Screw	1
18	47 041 05	Gasket — Air Cleaner	1
	25 757 02	Kit — Carburetor Repair	1
	25 757 05	Kit — Throttle & Choke Repair	1
Crankcase — Group 7			
1	45 782 14	Block — Cylinder (Incl. Ref. #13, 15 & 16) (USE: Miniblock)	1
2	47 422 05	Gasket — Shim	A/R
3	47 041 09	Gasket — Bearing Plate	1
4	235376	Bearing — Ball	2
5	47 146 07	Plate — Bearing	1
6	47 032 06	Seal — Front Oil	1
7	X-159-2	Screw — H.C.	4
8	X-132-5	Screw — H.C.	4
9	235026	Cover — Camshaft	1
10	235025	Gasket — Camshaft Cover	1
11	235125-S	Shaft — Governor Gear	1
12	X-230-11	Plug — Expansion	1
13	234866	Bearing — Governor Cross Shaft	1
14	47 032 07	Seal — Rear Oil	1
15	230265	Insert — Intake Valve	1
16	235007-S	Guide — Valve	2
17	236559	Shaft — Balance Gear	2
Crankshaft — Group 8			
1	45 142 21	Kit — Crankshaft	1
2	45 043 03	Gear Assembly	2
3	47 030 01	Bearing — Needle	2
4	47 755 01	Kit — Spacer	1
5	X-269-34	Retainer	2

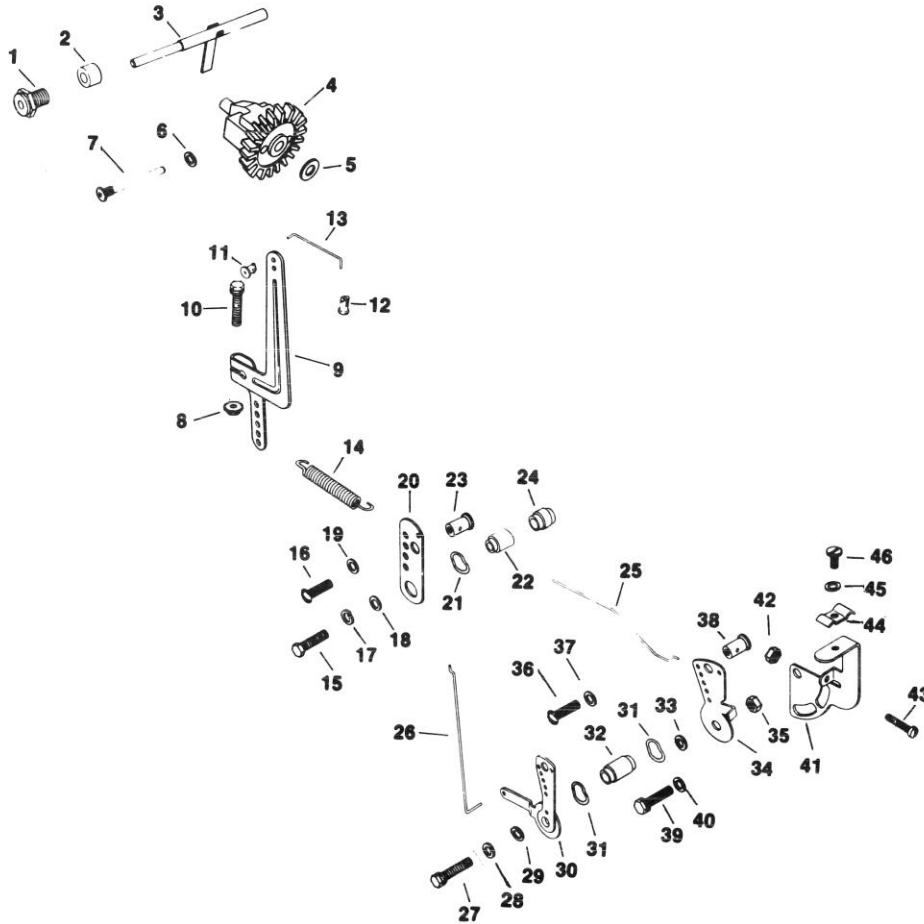
ENGINE KOHLER MODEL NO. M16S SPEC NO. 711512 (Continued)



ENGINE KOHLER MODEL NO. M16S SPEC NO. 711512 (Continued)

Ref. No.	Part No.	Description	No. Used
Cylinder Head — Group 9			
1	45 015 09	Head — Cylinder	1
2	45 041 16	Gasket — Head	1
3	270889	Washer — Plain	10
4	270158	Screw — H.C.	9
5	47 445 02	Strap — Lifting	1
6	47 086 17	Screw — Hex. Hd.	1
Dipstick — Group 10			
1	47 038 27	Dipstick	1
2	41 153 01	O-Ring	1
3	47 029 06	Adapter — Oil Fill	1
4	X-131-2	Screw — R.H.	3
5	237064	Gasket — Adapter	1
Flywheel — Group 13			
1	47 025 53	Flywheel	1
2	52 114 02	Washer — Plain	1
3	25 086 24	Screw — Hex. Mach.	1
4	X-46-3	Key — Woodruff	1
5	25 112 04	Spacer	4
6	25 157 01	Fan	1
7	25 086 21	Screw — Hex. Wash. Hd.	4
8	235377	Shaft — Front Drive	1
9	X-159-2	Screw — H.C.	4
10	25 162 03	Screen — Grass	1
Fuel Pump — Group 14			
1	47 559 04	Pump — Fuel Assembly	1
2	25 041 05	Gasket — Fuel Pump	1
3	X-25-63	Washer — Plain	2
4	47 155 12	Connector — 45° (For 1/4" I.D. Rubber Hose)	1
5	X-426-9	Clamp — Hose	2
6	X-174-2	Screw — Pozidriv F.H.	2
7	25 353 01	Line — Fuel 5-1/2"	1
8	25 155 02	Connector — 90° (For 1/4" I.D. Rubber Hose)	1
Fuel Tank — Group 15			
1	47 065 04	Tank — Fuel	1
2	25 173 02	Cap — Fuel Tank	1
3	25 100 04	Nut — Acorn	2
4	X-25-78	Washer — Plain	2
5	47 366 01	Mount — Isolation	4
6	X-799-1	Palnut	2
7	47 126 30	Bracket — Lower Tank	1
8	X-25-28	Washer — Plain	2
9	X-159-3	Screw — H.C.	2
10	41 158 03	Bushing — Fuel Tank	1
11	25 462 01	Valve — Fuel Shut-Off	1
12	47 353 02	Line — Fuel 19"	1

Ref. No.	Part No.	Description	No. Used
Exhaust — Group 16			
1	45 041 15	Gasket — Exhaust	1
Ignition — Group 18			
1	47 584 01	Module — Ignition (Before serial no. 1715900013)	1
1	47 584 02	Module — Ignition (After serial no. 1715900003)	1
2	X-25-79	Washer — Plain	2
3	X-156-1	Screw — H.C.	2
4	237878	Kit — Stator (15 Amp.)	1
5	X-778-1	Screw — Stator Mounting (Before serial no. 1728100015)	4
5	X-67-51	Screw — Stator Mounting (After serial no. 1728100005)	4
6	41 155 03	Connector — Male (2 Contact)	1
7	X-728-1	Clip — Lead	1
8	X-67-59	Screw — Hex. Wash. Hd.	1
9	X-132-4	Screw — H.C.	2
10	236602	Connector — Female (3 Contact)	1
11	41 403 05	Regulator/Rectifier	1
12	235041-S	Spark Plug RH-10	1
13	210281	Clip — Hi-Tension Lead	1
	47 518 46	Lead — Violet, Regulator to Connector	1
	47 518 43	Lead — Module to Connector (Before serial no. 1723700013)	1
	47 518 38	Lead — Module to Connector (After serial no. 1723700003)	1
Oil Pan — Group 21			
1	235057	Gasket — Oil Pan	1
2	235147	Pan — Oil	1
3	X-159-3	Screw — H.C.	4
4	X-75-10	Plug — Sq. Hd.	1
Piston & Rod — Group 22			
1	45 108 06	Ring Set (Std. & .003)	1
	45 108 07	Ring Set (.010)	1
	45 108 08	Ring Set (.020)	1
	45 108 09	Ring Set (.030)	1
2	45 874 01	Piston w/Ring Set (Std.)	1
	45 874 02	Piston w/Ring Set (.003)	1
	45 874 03	Piston w/Ring Set (.010)	1
	45 874 04	Piston w/Ring Set (.020)	1
	45 874 05	Piston w/Ring Set (.030)	1
3	47 018 01	Retainer — Piston Pin	2
4	45 067 22	Connecting Rod (Std.)	1
	45 067 23	Connecting Rod (.010)	1



ENGINE KOHLER MODEL NO. M16S SPEC NO. 711512 (Continued)

Ref. No.	Part No.	Description	No. Used
Governor — Group 17			
1	235476	Bushing — Governor Shaft	1
2	X-400-80	Spacer	1
3	A-235256-S	Kit Shaft — Governor Cross	1
4	A-235743-S	Kit — Governor Gear	1
5	237022	Washer — Thrust	1
6	25 468 01	Washer — Plain	1
7	231355	Pin — Governor Stop	1
8	X-799-1	Palnut	1
9	47 090 20	Lever — Governor	1
10	X-776-1	Screw — H.C.	1
11	47 158 04	Bushing — Linkage Retaining	1
12	25 158 07	Bushing — Linkage Retaining	1
13	47 079 05	Linkage — Governor (Governor to Carburetor)	1
14	235496	Spring — Governor	1
15	X-5-26	Screw — H.C.	1
16	X-51-8	Screw — Slt'd. Pan Hd.	1
17	X-20-1	Washer — Lock	1
18	X-25-63	Washer — Plain	1
19	X-25-102	Washer — Plain	1
20	235086	Bracket — Speed Control	1
21	275690	Washer — Wave	1
22	235085	Spacer	1
23	48 755 10	Kit — Clamp	1
24	X-384-2	Spacer	1

Ref. No.	Part No.	Description	No. Used
25	47 079 07	Linkage — Throttle (Swivel Clamp to Throttle Control Lever)	1
26	47 079 01	Linkage — Choke (Carburetor to Choke Shaft)	1
27	X-5-26	Screw — H.C.	1
28	X-20-1	Washer — Lock	1
29	X-25-63	Washer — Plain	1
30	47 090 06	Lever — Choke Control	1
31	275690	Washer — Wave	2
32	47 112 02	Spacer	1
33	X-25-82	Washer — Plain	1
34	47 090 10	Lever — Throttle Control	1
35	X-76-2	Nut — Hex	1
36	X-51-8	Screw — Slt'd. Pan Hd.	1
37	X-25-102	Washer — Plain	1
38	48 755 10	Kit — Clamp	1
39	X-132-6	Screw — H.C.	1
40	X-25-72	Washer — Plain	1
41	47 126 09	Bracket — Choke	1
42	X-72-4	Nut — Hex	1
43	232556	Screw	1
44	47 237 02	Clamp — Swivel	1
45	X-19-1	Washer — Lock	1
46	X-15-5	Screw — F.H.M.	1