



Track Alignment Tool

For TX Compact Utility Loaders

Model No. 110-0069

Operator's Manual

Whenever you change or remove a track, drive sprocket, or track guide, align the drive sprocket, track guide, and tension wheel using the track alignment tool. Aligning the track assembly will reduce wear on the track and improve performance.

Aligning a Track

1. Remove the track; refer to the traction unit *Operator's Manual* for instructions.
2. Loosen the 4 track guide bolts (Figure 1).

Important: Do not remove the bolts.

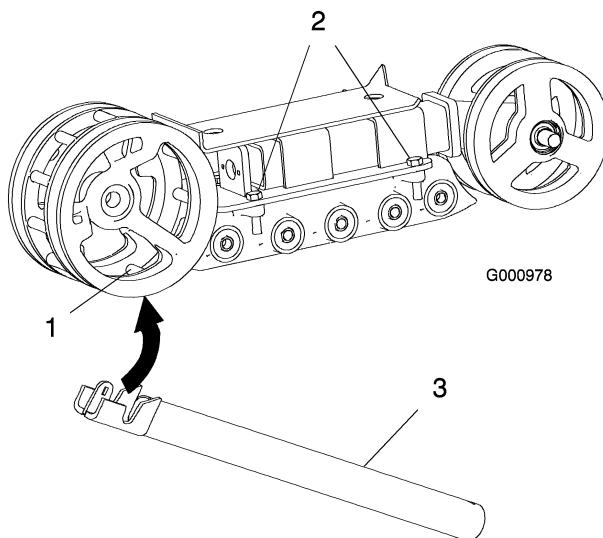


Figure 1

1. Drive sprocket spacer
2. Track guide bolts (only 2 shown; the other 2 are behind the track tensioning assembly)
3. Track alignment tool

3. Place the slot of the alignment tool around a drive sprocket spacer on the bottom of the sprocket (Figure 1) and secure it with the pin (Figure 2).

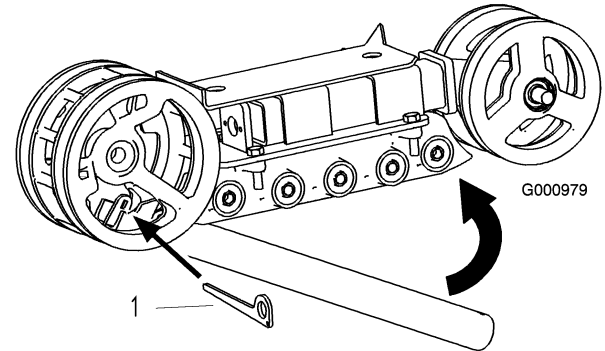


Figure 2

1. Pin

4. Rotate the alignment tool up into the channel in the track guide and between the tension wheels (Figure 2 and Figure 3), moving the track guide as needed to allow it to fit into the channel.

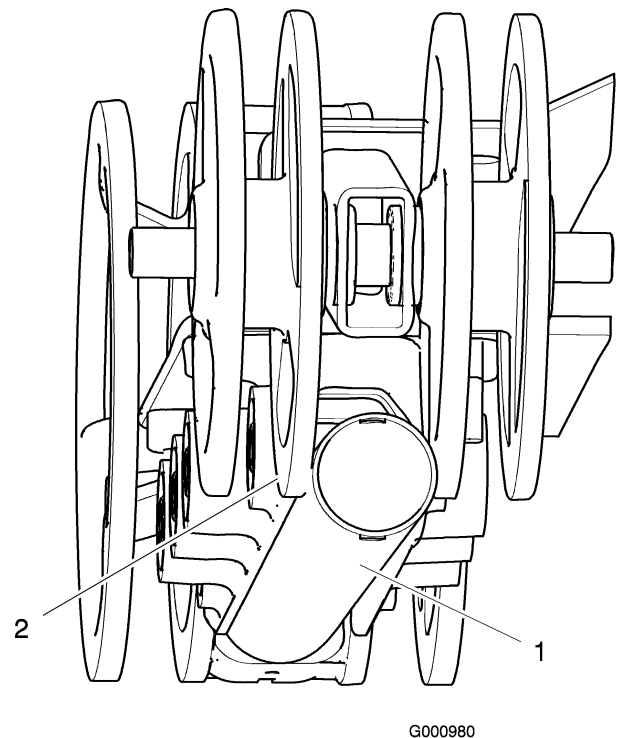


Figure 3

1. Track alignment tool
2. Tension wheels

5. Tie with a cord or hold the track alignment tool in place and tighten the track guide bolts, torquing them to 67 to 83 ft-lb (91 to 112 N·m).
6. Remove the pin securing the alignment tool and remove the tool.
7. Install the track; refer to the traction unit *Operator's Manual* for instructions.