



# Roll Over Protection System

## Z Master<sup>®</sup> 400 Series Mowers

Part No. 107-8093

**Operator's Manual**

**Important** Always keep this manual with the original manual that came with the machine.

# Safety

## Slope Operation

- Do not mow slopes greater than 15 degrees.
- Do not mow near drop-offs, ditches, steep banks or water. Wheels dropping over edges can cause rollovers, which may result in serious injury, death or drowning.
- Do not mow slopes when grass is wet. Slippery conditions reduce traction and could cause sliding and loss of control.
- Do not make sudden turns or rapid speed changes.
- Use a walk behind mower and/or a hand trimmer near drop-offs, ditches, steep banks or water.
- Reduce speed and use extreme caution on slopes.
- Remove or mark obstacles such as rocks, tree limbs, etc. from the mowing area. Tall grass can hide obstacles.
- Watch for ditches, holes, rocks, dips, and rises that change the operating angle, as rough terrain could overturn the machine.
- Avoid sudden starts when mowing uphill because the mower may tip backwards.
- Be aware that loss of traction may occur going downhill. Weight transfer to the front wheels may cause drive wheels to slip and cause loss of braking and steering.
- Always avoid sudden starting or stopping on a slope. If tires lose traction, disengage the blades and proceed slowly off the slope.
- Follow the manufacturer's recommendations for wheel weights or counterweights to improve stability.
- Use extreme care with grass catchers or other attachments. These can change the stability of the machine and cause loss of control.

## Using the Rollover Protection System (ROPS)

- Keep the roll bar in the raised and locked position and use the seat belt when operating the machine.
- Be certain that the seat belt can be released quickly in the event of an emergency.
- Be aware there is no rollover protection when the roll bar is down.
- Check the area to be mowed and never fold the ROPS in areas where there are slopes, drop offs or water.
- Lower the rollbar only when absolutely necessary. Do not wear the seat belt with the roll bar folded down.
- Check carefully for overhead clearances (i.e. branches, doorways, electrical wires) before driving under any objects and do not contact them.

# Safety and Instruction Decals



Safety decals and instructions are easily visible to the operator and are located near any area of potential danger. Replace any decal that is damaged or lost.

**▲ WARNING**




**TO AVOID INJURY OR DEATH FROM ROLLOVER:**  
Keep roll bar in the raised and locked position and use seat belt.



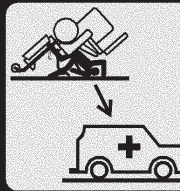
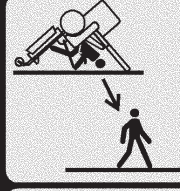
**THERE IS NO ROLL OVER PROTECTION WHEN THE ROLL BAR IS DOWN.**  
Lower the roll bar only when absolutely necessary.  
Do not wear seat belt when the roll bar is down.  
Drive slowly and carefully.  
Raise the roll bar as soon as clearance permits.  
Read and follow slope operation instructions and warnings.

107-2102


107-2102



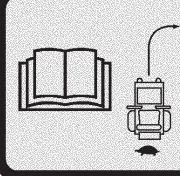
**1**

**2**



**3**



107-3069

107-3069

1. Warning—in a roll over accident without the roll bar raised and seat belt used, you will be injured or killed; in a roll over accident with the roll bar raised and seat belt used, you may be uninjured.
2. To mow under obstacles, lower the roll bar and do not wear the seat belt; at all other times, always raise the roll bar and wear the seat belt.
3. Read the *Operator's Manual*, and slow down and turn gradually.

# Operation

**Note:** Determine the left and right sides of the machine from the normal operating position.

## Using the Rollover Protection System (ROPS)

**Warning**

To avoid injury or death from a rollover, keep the roll bar in the raised locked position and use the seat belt.

Ensure that the rear part of the seat is secured with the seat latch.

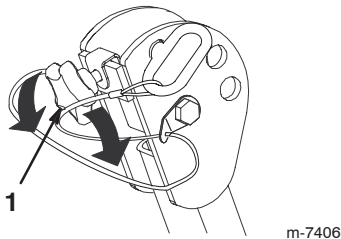
**Warning**

There is no rollover protection when the roll bar is in the down position.

- Lower the roll bar only when absolutely necessary.
- Do not wear the seat belt when the roll bar is in the down position.
- Drive slowly and carefully.
- Raise the roll bar as soon as clearance permits.
- Check carefully for overhead clearances (e.g., branches, doorways, and electrical wires) before driving under any objects and do not contact them.

**Important** Lower the roll bar only when absolutely necessary.

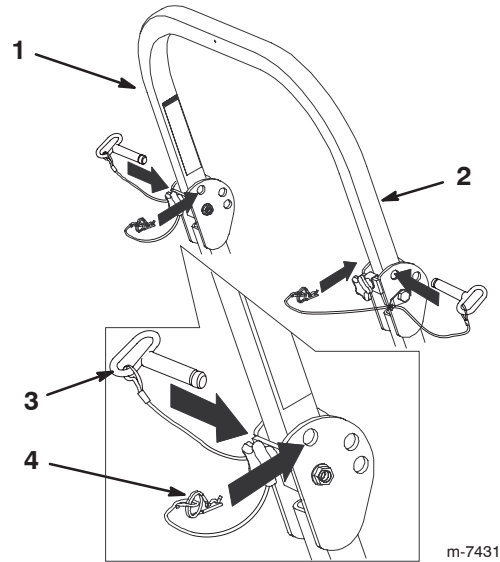
1. To lower the roll bar, loosen the front handles (Fig. 1).



**Figure 1**

1. Front handle

2. Remove the hairpin cotter pins and remove the 2 pins (Fig. 2).

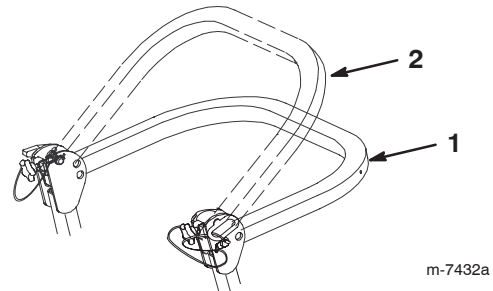


**Figure 2**

1. Roll bar
2. Raised position
3. Pin
4. Hairpin cotter pin

3. Lower the the roll bar to the down position.

**Note:** There are 2 down positions. See Figure 3 for the positions.



**Figure 3**

1. Full down position
2. Down position with bagger installed

4. Install the 2 pins and secure them with the hairpin cotter pins (Fig. 2).

**Important** Always use the seat belt with the roll bar in the raised position.

**Important** Ensure that the rear part of the seat is secured with the seat latch.

5. To raise the roll bar, remove the hairpin cotter pins and remove the 2 pins (Fig. 2).
6. Raise the roll bar to the upright position and install the 2 pins and secure them with the hairpin cotter pins (Fig. 2).

7. Tighten the front handles against the center roll bar ends (Fig. 1).

## Think Safety First

Read all safety instructions and symbols in the safety section. Knowing this information could help you or bystanders avoid injury.

! **Danger** !

**Operating the machine on wet grass or steep slopes can cause sliding and loss of control.**

**Wheels dropping over the edges can cause rollovers, which may result in serious injury, death, or drowning.**

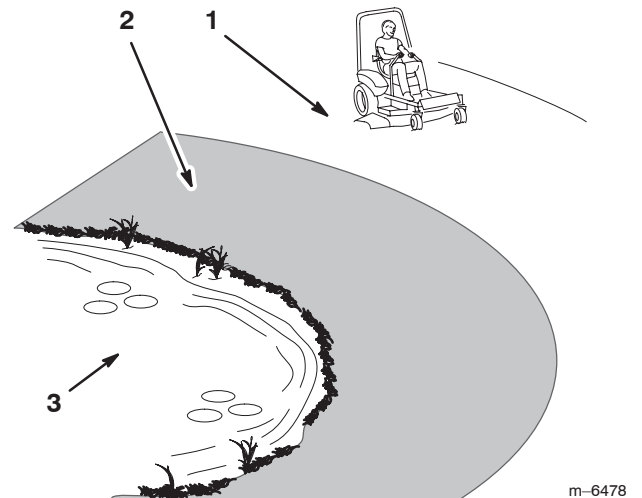
**There is no rollover protection when the roll bar is down.**

**Always keep the roll bar in the raised and locked position, and use the seat belt.**

**Read and follow the rollover protection instructions and warnings.**

**To avoid loss of control and the possibility of rollover:**

- **Do not operate the machine near dropoffs or near water.**
- **Do not operate the machine on slopes greater than 15 degrees.**
- **Reduce the speed and use extreme caution on slopes.**
- **Avoid sudden turns or rapid speed changes.**
- **Avoid operating the machine on wet grass.**



**Figure 4**

1. Safe Zone—use the Z Master here on slopes less than 15 degrees or flat areas.
2. Use the walk behind mower or hand trimmer near dropoffs and water.
3. Water





