



Topdresser 2500

Model No. 44507 - 250000001 and up.

Parts Catalog

Ordering Replacement Parts

To order replacement parts, please supply the part number, the quantity, and the description of each part desired.

Understanding Reference Numbers

Each Identified part in an illustration has a reference number. The reference number for a part also appears in the parts list, along with other information about the part.

This catalog uses two special reference number formats, one to indicate parts in a service assembly and another to indicate the quantity of a given part in an illustration.

Service Assembly Reference Numbers

Parts in service assemblies have reference numbers in the form a:b. The a represents the reference number of the entire service assembly and the b represents a sequential number unique to each part within the service assembly.

For example, a wheel assembly might be identified by reference number 6, the tire by 6:1, the valve by 6:2, and the wheel by 6:3. When you order the assembly identified by reference number 6, you receive all parts identified by reference numbers 6:1, 6:2, and 6:3. However, you may also order any part individually. Reference numbers of this type appear in illustrations and in part lists.

Reference Numbers Indicating Quantity

In an illustration, if a reference number indicates more than one part, the reference number has the form nX y. The n represents the quantity of the part, the X is the multiplication symbol, and the y represents the reference number.

For example, in an illustration, the reference number 2X 37 means that two of the parts identified by reference number 37 are indicated.

Contents

Description	Page	Description	Page
Cradle Assembly 3	Gate Assembly 9
Cradle and Trailer Assembly 4	Brush and Motor Assembly 10
Hydraulic Manifold Assembly 6	Hopper Assembly 11
Hydraulic Installation Assembly 7	Gate Slide and Brush Guard Assembly 12
Slider Bed and Roller Assembly 8	Chain, Sprocket and Guard Assembly 13
		Attachments and Accessories List 14

Part Description Abbreviations

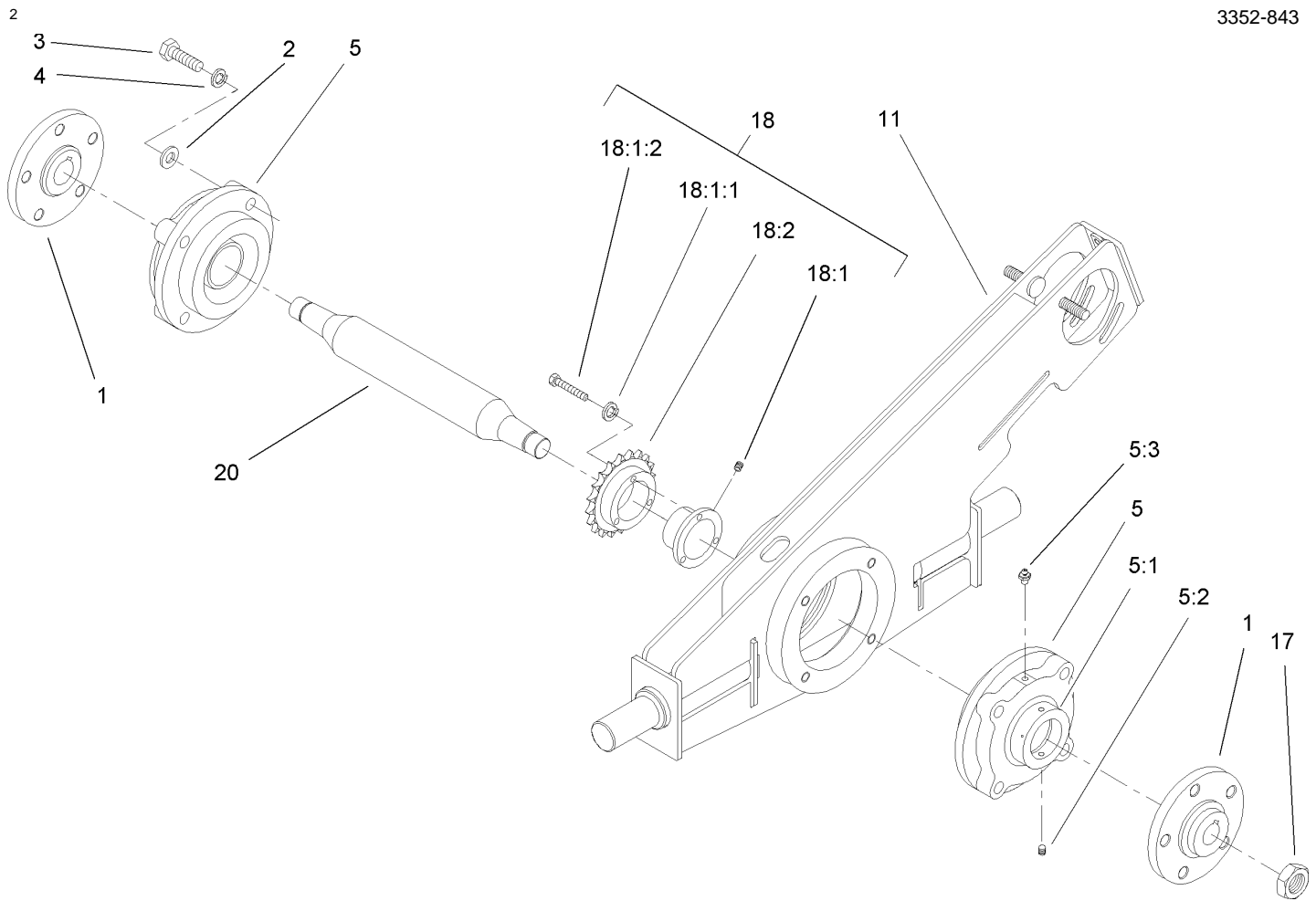
Part descriptions in this catalog may include the following abbreviations.

AR. as required	HYD. hydraulic
ASM. assembly	INC. incorporated
CARR. carriage	LH. left hand
DEG. degrees	NI. nylon insert
FH. flat head	PPH. phillips pan head
GA. gauge	PTH. phillips truss head
HF. hex flange	PTO. power take off
HH. hex head	RH. right hand
HHF. hex head flange	SFH. slotted fillister head
HHFTF. hex head flange thread forming	SHH. slotted hex head
HJ. hex jam	SHWH. slotted hex washer head
HLH. hex lag head	SPH. slotted pan head
HOC. height-of-cut	SQH. square head
HS. hex	SRH. slotted round head
HSBH. hex socket button head	STD. standard
HSFH. hex socket flat head	TAP. self tapping
HSH. hex socket head	TTH. torx truss head
HWH. hex washer head	WH. wing head
HWHTF. hex washer head thread forming	

Footnotes

❶ Not illustrated

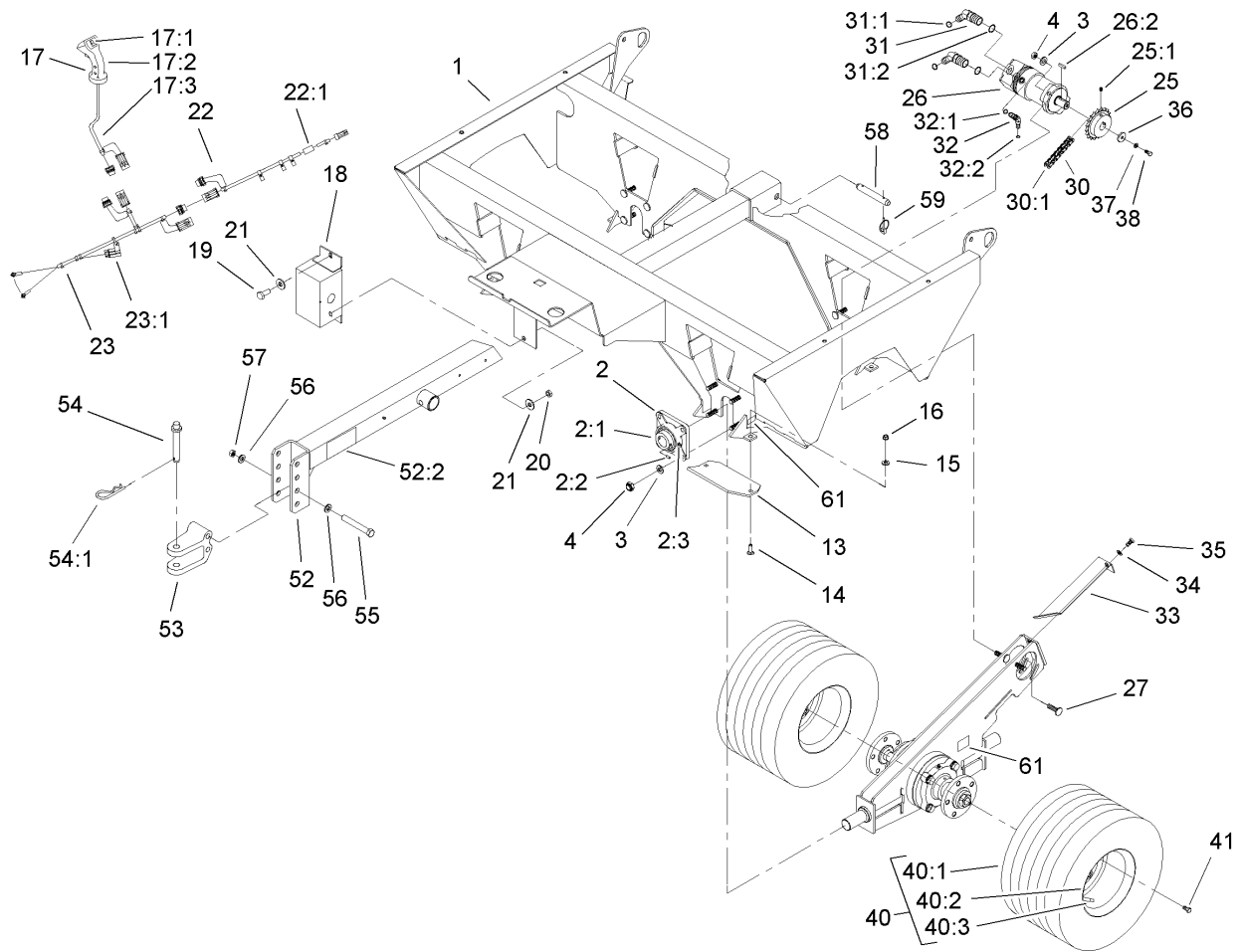
❷ Not serviced separately



Cradle Assembly

Ref	Part No.	Qty.	Description
1	100-1418-03	4	Hub
2	3256-26	16	Washer-Flat
3	325-7	16	Screw-HH
4	3253-7	16	Washer-Lock
5	100-1455	4	Bearing
5:1	99-0194	1	Collar-Locking
5:2	99-0195	1	Screw-Set, HS
5:3	302-2	1	Fitting-Grease
11	100-1488-03	2	Cradle ASM
17	26-3790	4	Nut-Lock
18	100-7690	2	Sprocket And Hub ASM
18:1	100-7730	1	Bushing
18:1:1	3253-18	3	Washer-Lock / Sp
18:1:2	32104-96	3	Screw-HH
18:2	100-7731	1	Sprocket-Driven, 20 Tooth
20	100-1490	2	Axle-Cradle

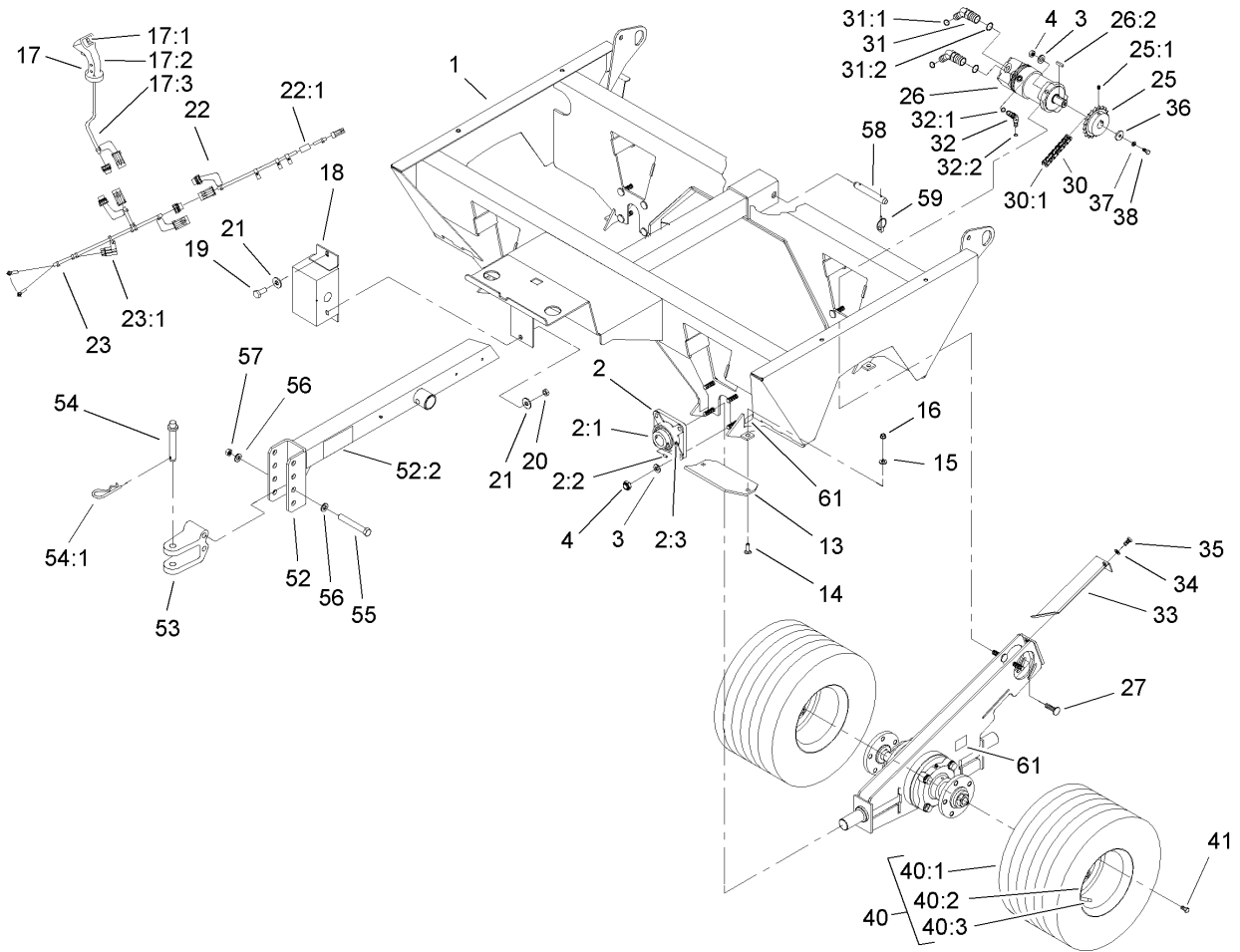
--	--	--	--



Cradle and Trailer Assembly

Ref	Part No.	Qty.	Description
1	106-9671-01	1	Frame-Trailer
2	100-1456	4	Bearing
2:1	01-172-0090	1	Collar-Lock
2:2	3246-16	1	Screw-Set
2:3	302-2	1	Fitting-Grease
3	3256-26	20	Washer-Flat
4	3296-23	20	Nut-Lock, NI
13	100-7678-01	4	Plate-Skid
14	3231-25	8	Screw-CARR
15	3256-25	8	Washer-Flat
16	3296-39	8	Nut-Lock, NI
17	106-9694	1	Handle-Control,asm
17:1	106-9696	1	Switch-Rocker
17:2		1	Handle
17:3		1	Harness-Wire,switch
18	100-1410-03	1	Pump-Charge
19	325-5	2	Screw-HH
20	3296-45	2	Nut-Lock, NI
21	3256-6	4	Washer-Flat
22	99-0008	1	Harness-Wire, Trailer
22:1	100-4918	1	Diode
23	99-0198	1	Harness-Wire, Battery
23:1	110928	1	Fuse-5 Amp
25	100-7691	2	Sprocket-Chain, Roller

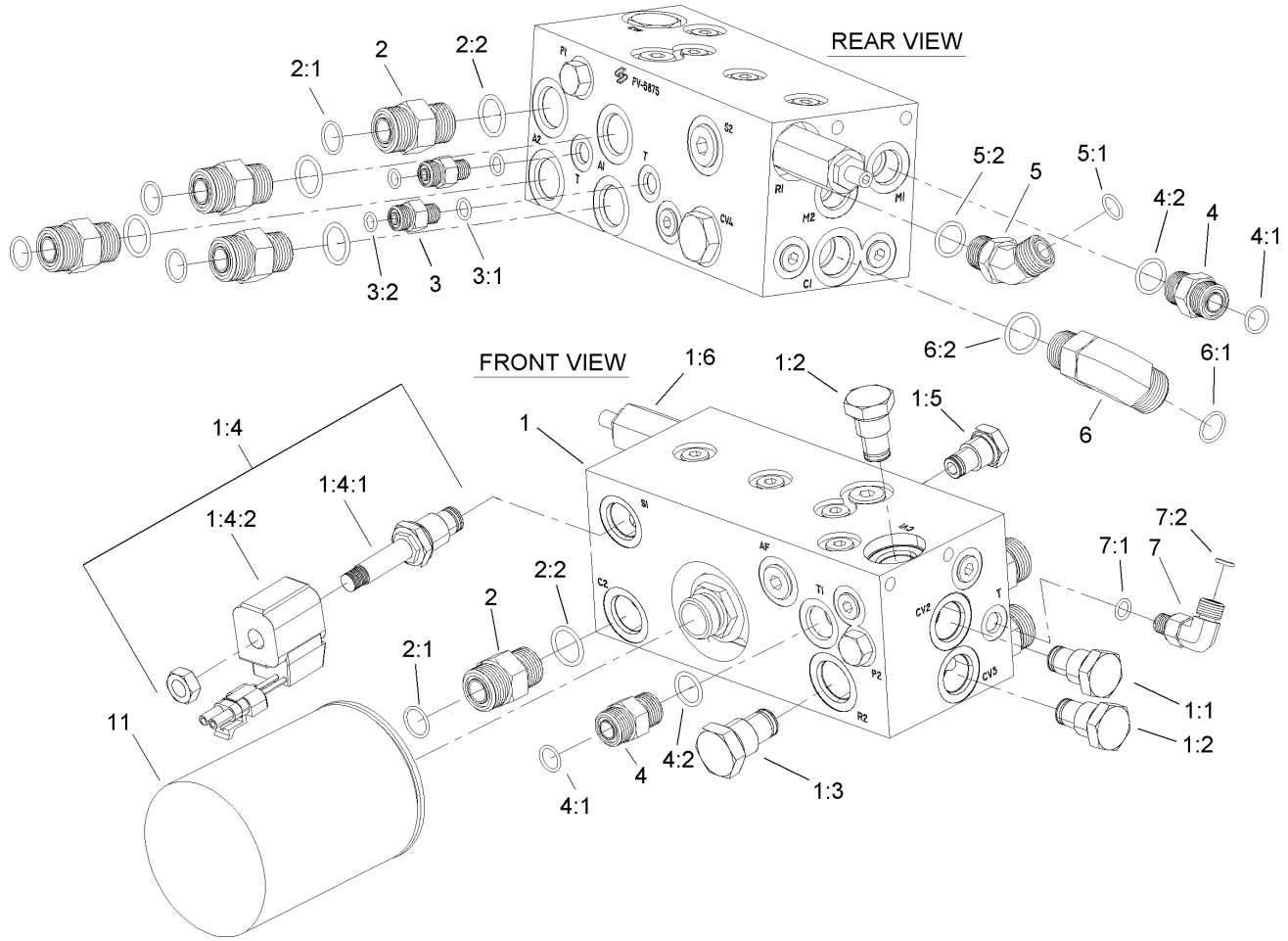
Ref	Part No.	Qty.	Description
25:1	3246-3	2	Screw-HS
26	100-1459	2	Motor-HYD
26:1	100-1466	1	Seal Kit
26:2	5-7280	1	Key
27	100-7698	2	Bolt-Carriage
30	100-1472	2	Chain-Cradle, Roller
30:1	2710-16	1	Link-Chain
31	340-14	4	Fitting-Hyd, 45 DEG
31:1	237-65	1	O-Ring
31:2	237-80	1	O-Ring
32	340-103	2	Fitting-Hyd, 45 DEG
32:1	237-78	1	O-Ring
32:2	237-21	1	O-Ring
33	100-1452-03	2	Cover-Cradle Top
34	3256-24	2	Washer-Flat
35	323-4	2	Screw-HH
36	71-5320	2	Washer-Support, Engine
37	3253-4	2	Washer-Lock
38	322-3	2	Screw-HH
40	106-9690	4	Tire And Wheel,asm
40:1	106-9691	1	Tire
40:2	99-0174	1	Rim
40:3	232-27	1	Stem-Valve
41	71-4450	20	Bolt-Lug



Cradle and Trailer Assembly (continued)

Ref	Part No.	Qty.	Description
52	100-7686	1	Tongue ASM
52:2	100-7679	1	Decal-Warning
53	47-3550-01	1	Clevis-Hitch
54	13-6200	1	Pin-Hitch, Pointed
54:1	3290-343	1	Pin-Hair
55	327-12	2	Screw-HH
56	3256-7	4	Washer-Flat
57	3296-53	2	Nut-Lock, NI
58	100-7694	2	Pin-Clevis
59	92-1298	4	Pin-Lynch
61	58-6520	8	Decal-Grease

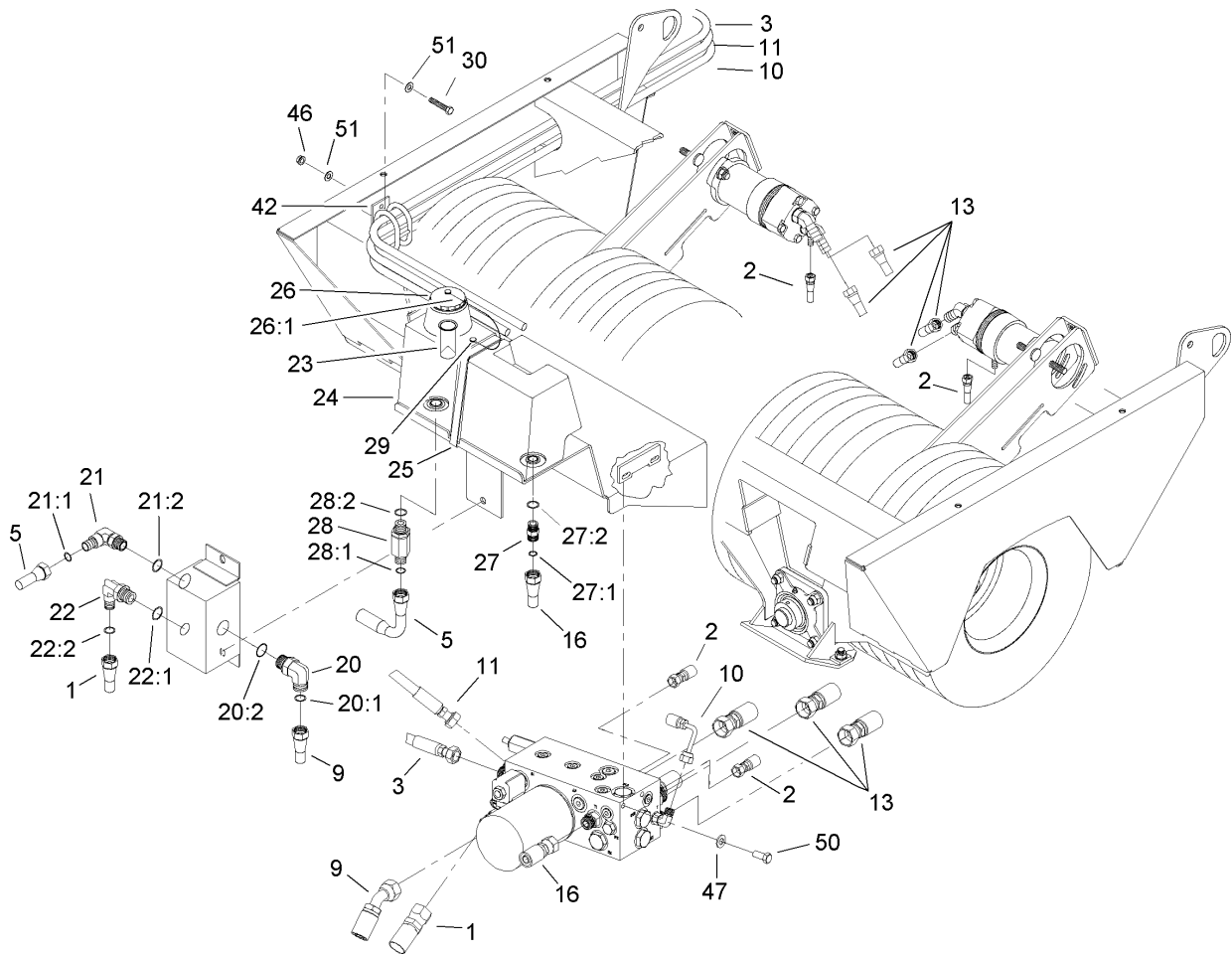
--	--	--	--



Hydraulic Manifold Assembly

Ref	Part No.	Qty.	Description
1	106-9667	1	HYD Manifold ASM
1:1	100-7723	1	Valve-Check
1:2	106-9669	2	Valve-Check
1:3	106-9670	1	Valve-Check
1:4	100-7699	1	Solenoid Valve ASM
1:4:1	100-7718	1	Valve-Solenoid
1:4:2	100-7720	1	Coil-Solenoid
1:5	106-9668	1	Valve-Check
1:6	100-7740	1	Valve-Relief
2	340-7	5	Adapter
2:1	237-65	1	O-Ring
2:2	237-80	1	O-Ring
3	340-92	2	Fitting-Hyd, Straight
3:1	237-78	1	O-Ring
3:2	237-21	1	O-Ring
4	340-4	2	Fitting-Hyd, Straight
4:1	237-30	1	O-Ring
4:2	237-79	1	O-Ring
5	340-101	1	Fitting-Hyd, 45 DEG
5:1	237-30	1	O-Ring
5:2	237-79	1	O-Ring
6	340-17	1	Fitting-Hyd, 90 DEG
6:1	237-65	1	O-Ring
6:2	237-80	1	O-Ring

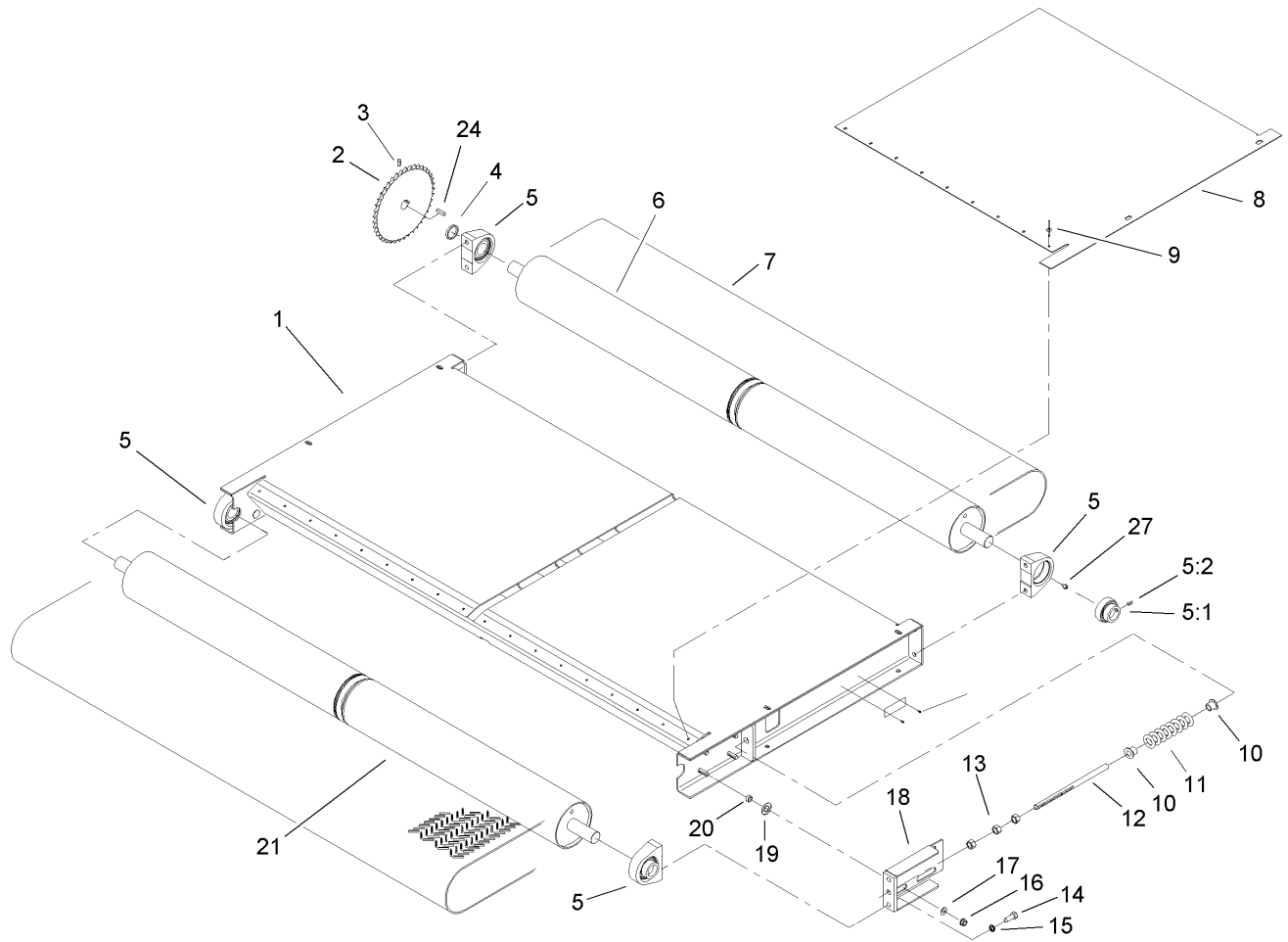
Ref	Part No.	Qty.	Description
7	340-132	1	Fitting-Hyd, 90 DEG
7:1	237-78	1	O-Ring
7:2	237-21	1	O-Ring
11	86-3010	1	Filter-Oil



Hydraulic Installation Assembly

Ref	Part No.	Qty.	Description
1	105-0639	1	HYD Hose ASM
2	106-9674	2	HYD Hose ASM
3	104-0304	1	HYD Hose ASM
5	100-7657	1	HYD Hose ASM
9	106-9675	1	HYD Hose ASM
10	106-9677	1	HYD Hose ASM
11	104-0303	1	HYD Hose ASM
13	106-9678	4	Hose ASM-HYD Hp
16	106-9676	1	Hose ASM-HYD Hp
20	340-142	1	Fitting-Hyd, 90 DEG
20:1	237-58	1	O-Ring
20:2	237-81	1	O-Ring
21	340-17	1	Fitting-Hyd, 90 DEG
21:1	237-65	1	O-Ring
21:2	237-80	1	O-Ring
22	340-139	1	Fitting-Hyd, 90 DEG
22:1	237-81	1	O-Ring
22:2	237-65	1	O-Ring
23	92-1705	1	Filter-Screen
24	94-4700	1	Tank-HYD
25	100-7693	1	Clamp-Tank
26	93-4365	1	Cap-Oil
26:1	75-0540	1	Tether And Button Kit
27	340-4	1	Fitting-Hyd, Straight

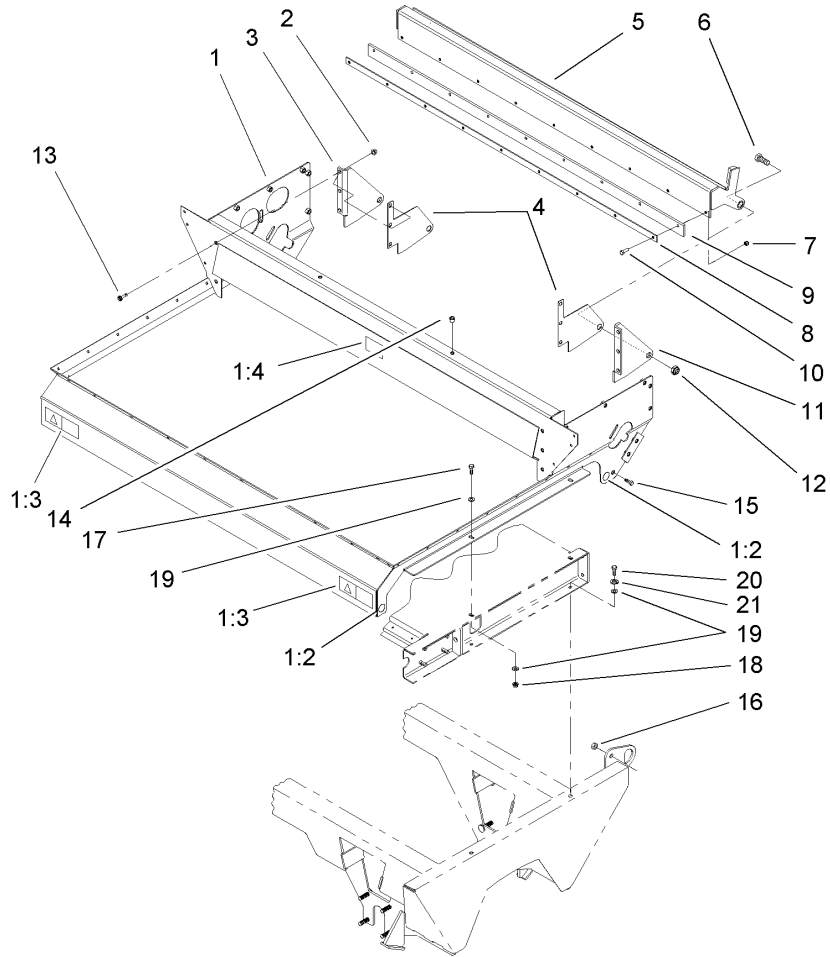
Ref	Part No.	Qty.	Description
27:1	237-30	1	O-Ring
27:2	237-79	1	O-Ring
28	340-7	1	Adapter
28:1	237-65	1	O-Ring
28:2	237-80	1	O-Ring
29	3290-126	1	Screw
30	322-5	2	Screw-HH
42	99-5621	1	Guide-Hose
46	3296-29	2	Nut-Lock, NI
47	3256-24	4	Washer-Flat
50	323-5	4	Screw-HH
51	3256-23	4	Washer-Flat
●99	100-7674	1	Premium Bio-Degradable HYD Fluid Pail
●99:1	99-0010	1	Decal-Fluid, Eal 224 HYD



Slider Bed and Roller Assembly

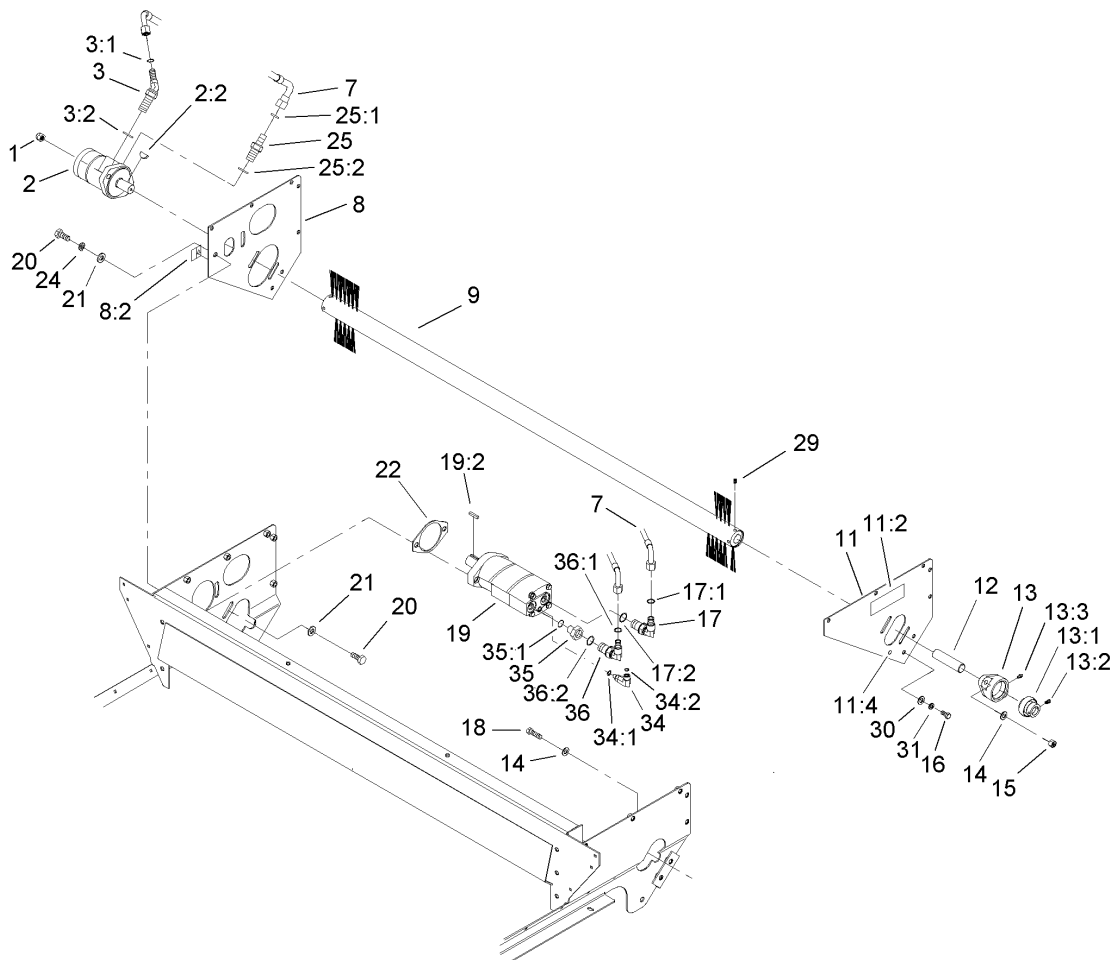
Ref	Part No.	Qty.	Description
1	99-0038-01	1	Frame-Bed, Slider
2	99-0166-03	1	Sprocket-Driven
3	3246-3	2	Screw-HS
4	99-0017-01	1	Spacer-Sprocket
5	99-0158	4	Bearing-Base, Tapped
5:1	251-246	1	Collar W/set Screws
5:2	106-9662	1	Screw-Set, HS
6	99-0046	1	Roller-Rear
7	100-1425	1	Belt Kit
8	99-0047	2	Plate-Wear
9	3269-28	18	Rivet-Pop
10	100-1414	4	Holder-Spring
11	99-0163	2	Spring-Compression
12	99-0118	2	Pin-Spring
13	3217-9	6	Nut-Hex
14	100-1438	8	Screw-Socket Head, Torx
15	3253-6	8	Washer-Lock
16	3296-39	8	Nut-Lock, NI
17	3256-4	8	Washer-Flat
18	99-0050-01	2	Spring Plate ASM
19	99-0052	8	Washer-Slide
20	100-1401	8	Spacer-Slide, Spring
21	99-0044	1	Roller-Front
24	10-7070	1	Key-Square

Ref	Part No.	Qty.	Description
27	302-60	4	Fitting-Grease



Gate Assembly

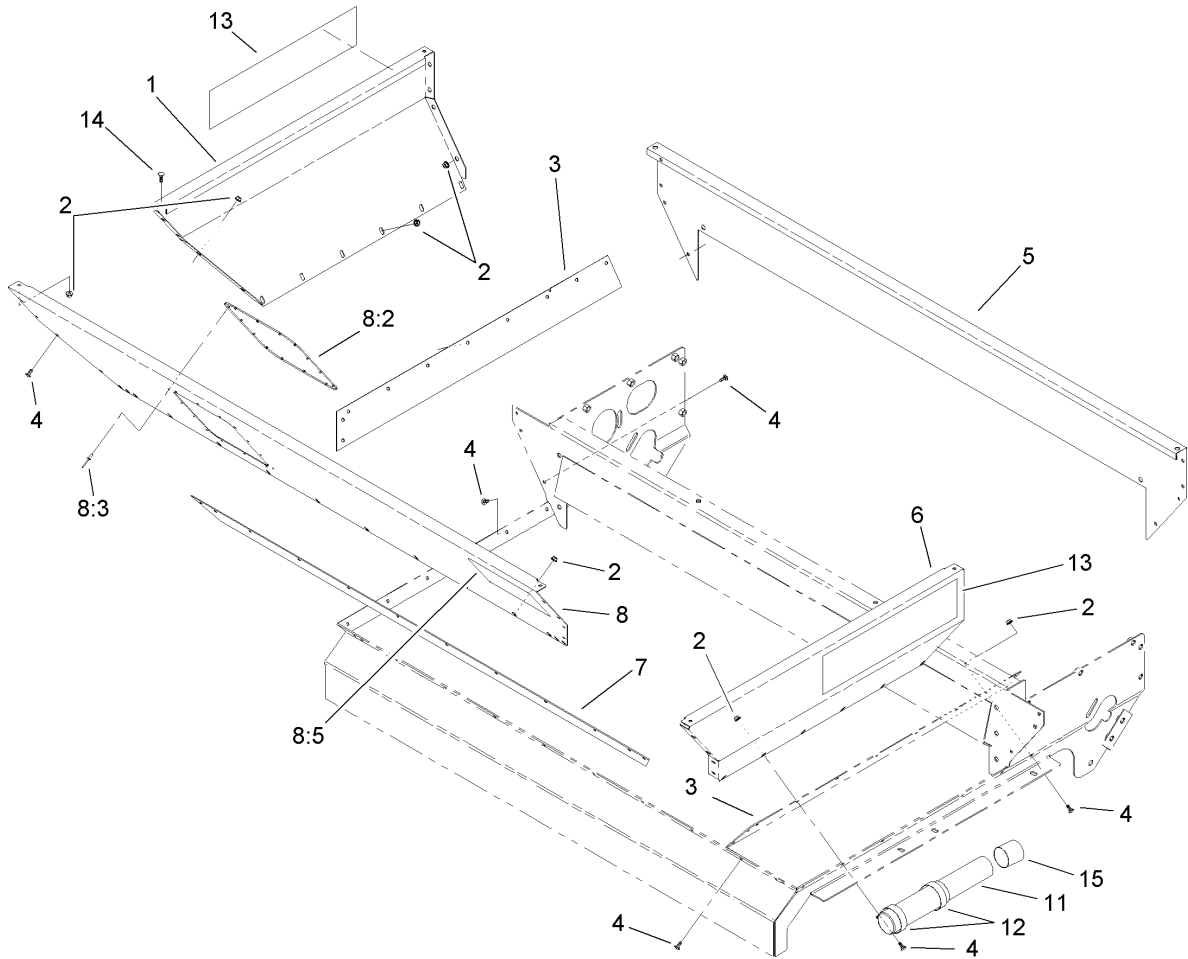
Ref	Part No.	Qty.	Description
1	100-1435	1	Hopper Frame ASM
1:2	58-6520	4	Decal-Grease
1:3	93-9092	2	Decal-Warning
1:4	105-4586	1	Decal-Shield
2	32128-37	6	Nut-HF
3	99-0079-01	1	Bracket-Gate Pivot, RH
4	99-0117	2	Wareplate-Gate
5	99-0068-01	1	Gate ASM
6	328-24	2	Screw-HH
7	3296-29	9	Nut-Lock, NI
8	99-0089-01	1	Plate-Backing
9	99-0074	1	Seal-Gate
10	322-6	9	Screw-HH
11	99-0078-01	1	Bracket-Gate Pivot, LH
12	3296-51	2	Nut-Lock, NI
13	324-4	6	Screw-HH
14	32148-9	2	Insert-Nut
15	325-5	2	Screw-HH
16	3296-23	2	Nut-Lock, NI
17	323-7	4	Screw-HH
18	3296-39	4	Nut-Lock, NI
19	3256-24	12	Washer-Flat
20	323-6	4	Screw-HH
21	3253-21	4	Washer-Lock



Brush and Motor Assembly

Ref	Part No.	Qty.	Description
1	3296-23	2	Nut-Lock, NI
2	99-0156	1	HYD Motor ASM
①2:1	100-1446	1	Seal Kit
2:2	3257-8	1	Key-Woodruff
3	340-89	1	Fitting-Hyd, 45 DEG
3:1	237-30	1	O-Ring
3:2	237-80	1	O-Ring
7	99-0177	1	Hose-HYD
8	100-1431	1	RH Motor Brace ASM
8:2	105-4586	1	Decal-Shield
9	99-0162	1	Brush
11	100-1430	1	LH Motor Brace ASM
11:2	106-7750	1	Decal-Danger
11:4	58-6520	1	Decal-Grease
12	99-0041	1	Shaft-Brush
13	99-0160	1	Bearing
13:1	251-249	1	Collar W/set Screws
13:2	3245-35	1	Screw-HS
13:3	302-2	1	Fitting-Grease
14	3256-25	4	Washer-Flat
15	3296-48	2	Nut-Lock, NI
16	323-4	4	Screw-HH
17	340-105	1	Fitting-Hyd, 90 DEG
17:1	237-80	1	O-Ring

Ref	Part No.	Qty.	Description
17:2	237-30	1	O-Ring
18	324-6	2	Screw-HH
19	99-0155	1	HYD Motor Conveyor ASM
①19:1	56-6890	1	Kit-Seal
19:2	10-7070	1	Key-Square
20	325-7	4	Screw-HH
21	3256-26	4	Washer-Flat
22	99-0116	1	Plate-Spacer
24	3253-7	2	Washer-Lock
25	340-6	1	Fitting-Hyd, Straight
25:1	237-30	1	O-Ring
25:2	237-80	1	O-Ring
29	3246-3	4	Screw-HS
30	3256-24	4	Washer-Flat
31	3253-21	4	Washer-Lock
34	100-7695	1	Adapter-HYD
34:1	237-78	1	O-Ring
34:2	237-21	1	O-Ring
35	100-4617	1	Adapter-HYD
35:1	237-80	1	O-Ring
36	99-6160	1	Fitting-Elbow, 90 DEG
36:1	237-30	1	O-Ring
36:2	237-79	1	O-Ring
①99	3290-379	6	Tie-Cable



Hopper Assembly

Ref	Part No.	Qty.	Description
1	99-0123	1	Panel-Hopper, RH
2	32128-33	48	Nut-HF
3	99-0142	2	Seal-Sand, Side
4	3229-25	44	Screw-CARR
5	99-0121	1	Panel-Hopper, Back
6	99-0124	1	Panel-Hopper, LH
7	99-0143	1	Seal-Sand, Front
8	100-1465	1	Front Hopper Panel ASM
8:2	99-0120	1	Hopper-Window
8:3	3269-28	14	Rivet-Pop
8:5	99-0016	1	Decal-Danger
11	104-7050	1	Housing-Manual
12	2412-133	2	R-Clamp
13	99-0012	2	Decal
14	321-4	4	Screw-HH
15	104-7048	1	Cap-Housing

--	--	--	--

Attachments and Accessories

For 44507 - Topdresser 2500

Product Name	Model/Part
Brake Kit	106-9680
Jack ASM	98-5016

NOTES

