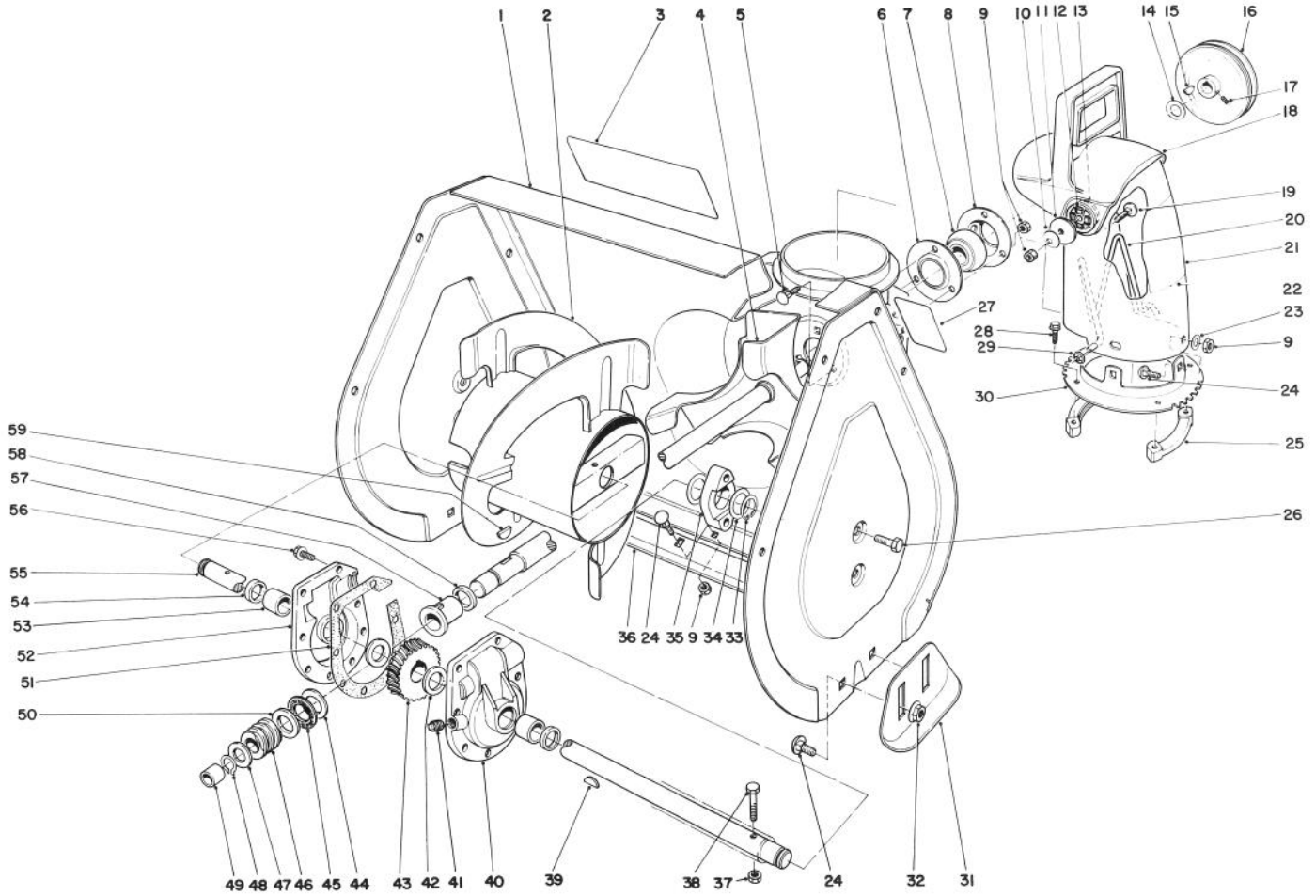




MODEL NO. 38052-7000001 & UP

**PARTS CATALOG**

**521 SNOWTHROWER**

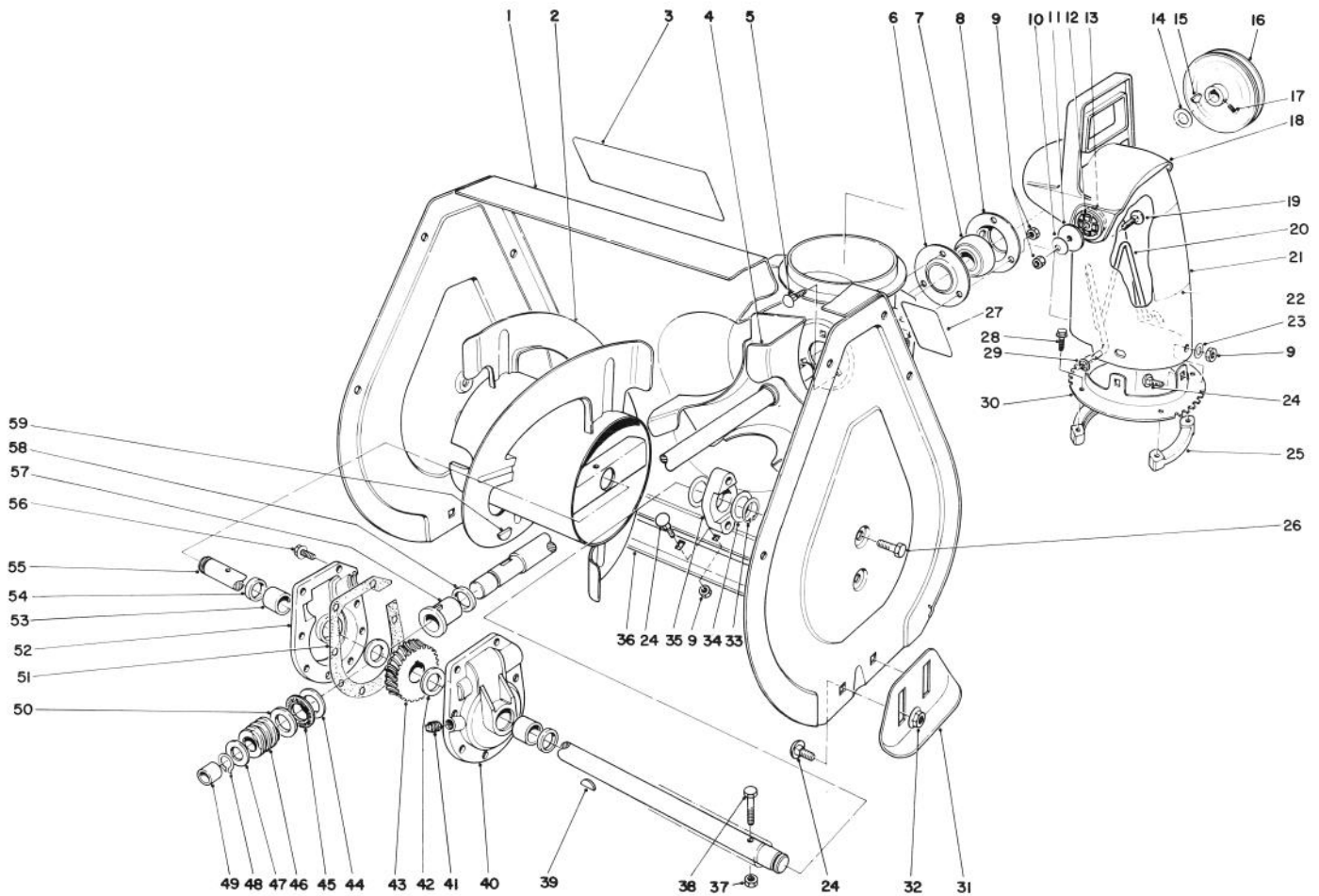


**AUGER ASSEMBLY**

Ref. No.	Part No.	Description	No. Used
1	11-5269	Housing — Auger (Incl. Ref. #3 & 27)	1
2	39-1180	Auger — R.H.	1
*	39-1190	Auger — L.H.	1
3	54-9910	Decal — Auger Warning	1
4	37-6990	Shaft & Impeller	1
5	3230-10	Carriage Bolt	3
6	26-6110	Flange Bearing — Front	1
7	26-6100	Bearing — Ball	1
8	26-6120	Flange Bearing — Rear	1
9	3296-29	Locknut	13
10	3290-340	Washer — Belleville	2
11	3256-68	Washer — Flat	2
12	55-8950	Plate — Friction	2
13	20-4320	Washer — Rubber	2

Ref. No.	Part No.	Description	No. Used
14	3-0737	Washer — Flat	1
15	3257-5	Key	1
16	37-6890	Pulley	1
17	3242-4	Screw — Set	2
18	56-2680	Deflector	1
19	3230-22	Carriage Bolt	2
20	56-2670	Wire — Chute	1
21	12-4749	Chute — Discharge (Incl. Ref. #22)	1
22	55-9650	Decal — Discharge	1
23	3256-23	Washer — Flat	3
24	3230-1	Carriage Bolt	12
25	37-6490	Retainer — Chute Ring	3
26	32144-70	Hex Hd. Self Tap. Screw	4
27	53-7670	Decal — Auger Warning	1

\*Not Illustrated

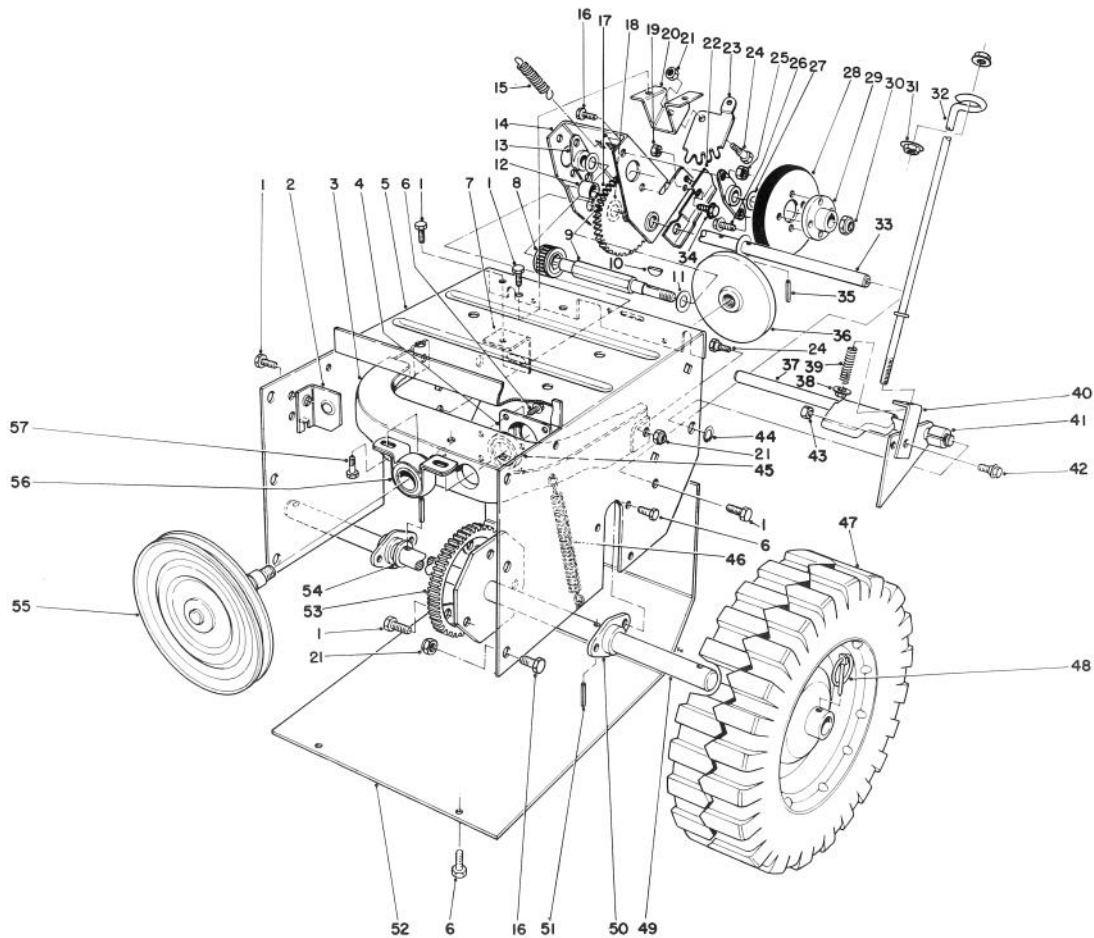


## AUGER ASSEMBLY (Continued)

Ref. No.	Part No.	Description	No. Used
28	27-0220	Hex Hd. Self Tap. Screw	6
29	3290-326	Nut — Push	1
30	37-8941	Ring — Chute	1
31	40-8160	Skid	2
32	32128-20	Flange Nut	4
33	32151-36	Ring — Snap	2
34	5-1550	Washer — Thrust	4
35	37-6550	Bearing — Auger	2
36	39-1550	Blade — Scraper	1
37	32152-4	Locknut	2
38	321-10	Hex Hd. Capscrew	2
39	3257-33	Key — Woodruff	1
40	37-8860	Gear Case — L.H. (Incl. Ref. #53 & 54)	1
41	281-1	Plug — Pipe	1
42	252-71	Bearing — Thrust	2
43	23-9050	Gear	1
44	257-3	Washer — Thrust	1

Ref. No.	Part No.	Description	No. Used
45	252-76	Bearing — Needle Thrust	1
46	5-7170	Worm	1
47	3-8664	Washer	1
48	32120-72	Ring — Retaining	1
49	256-32	Bushing	1
50	252-80	Washer — Thrust	1
51	51-0460	Gasket	1
52	37-8850	Gear Case — R.H. (Incl. Ref. #53 & 54)	1
53	256-237	Bushing	2
54	7-0045	Seal — Oil	2
55	37-6800	Shaft — Auger	1
56	32144-41	Hex Hd. Self Tap Screw	8
57	37-6560	Bushing — Input	1
58	237-87	Seal	1
59	3257-23	Key — Woodruff	1
*	37-6960	Gear Case Assembly Complete	1

\*Not Illustrated

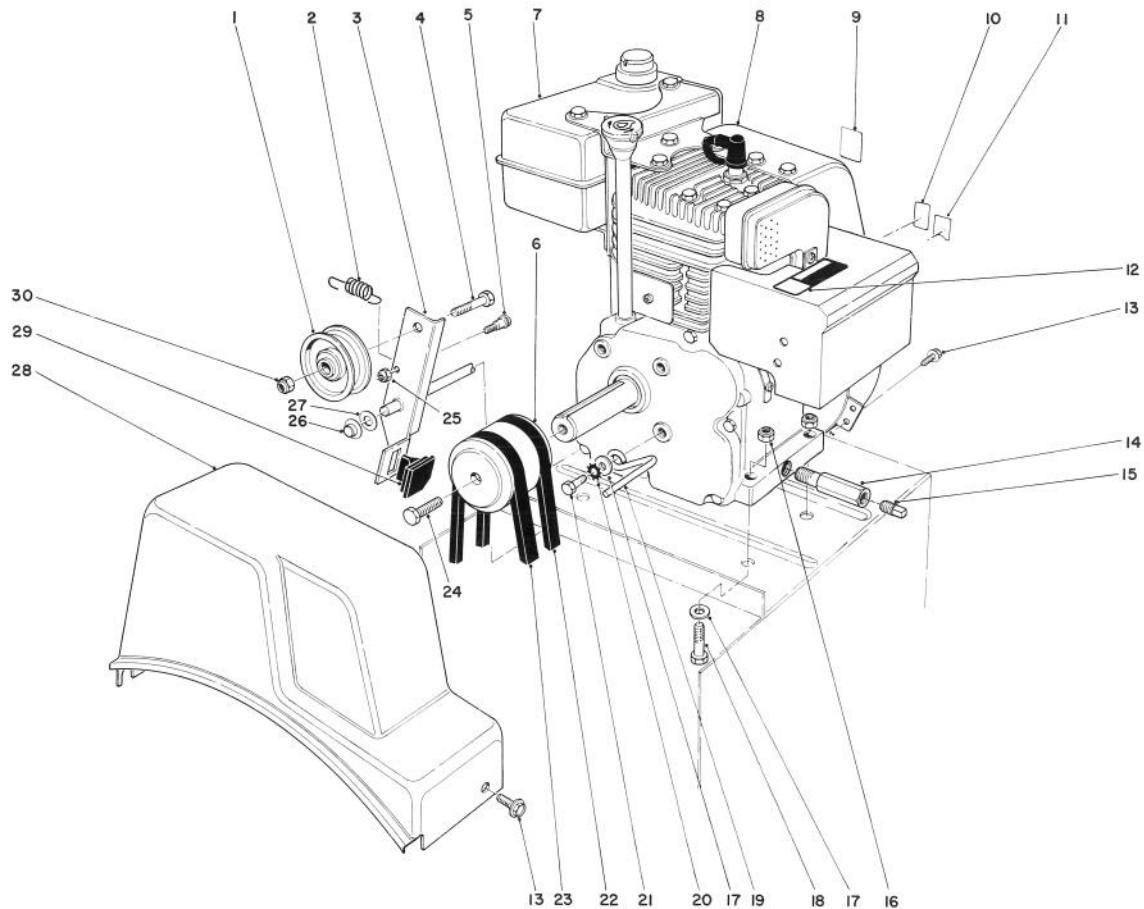


## TRACTION ASSEMBLY

Ref. No.	Part No.	Description	No. Used
1	32144-70	Hex Hd. Self Tap. Screw	9
2	37-9060	Mount — Clutch Rod Front	1
3	37-6740	Frame — Friction Plate	1
4	37-6730	Cup — Bearing	1
5	37-8900	Frame — Traction	1
6	32144-4	Hex Hd. Self Tap. Screw	12
7	37-9070	Mount — Clutch Rod Rear	1
8	37-6500	Gear — Sliding	1
9	37-6780	Shaft — Hex	1
10	3257-24	Key	1
11	5-7570	Washer — Thrust	2
12	256-86	Bushing	1
13	20-1620	Bearing — Friction Wheel	2
14	39-1230	Bracket — Sliding	1
15	37-8880	Spring — Traction Engage	1
16	322-2	Hex Hd. Capscrew	10
17	37-9160	Intermediate Gear & Bushing (Incl. Ref. #12)	1
18	10-9280	Washer — Thrust	2
19	3296-16	Locknut	1
20	37-8790	Mount — Quadrant Gear	1
21	3296-29	Locknut	9
22	39-1250	Cam — Receiver	1
23	37-8800	Quadrant — Gear	1
24	37-8770	Shoulder Bolt	3
25	32152-1	Locknut	4
26	49-2040	Hex Hd. Self Tap. Screw	4
27	36-4790	Washer — Thrust	2
28	37-6570	Wheel — Friction	1
29	39-1520	Hub — Friction Wheel Mount	1

Ref. No.	Part No.	Description	No. Used
30	3296-48	Locknut	1
31	32128-33	Flange Locknut	2
32	39-3060	Rod — Lower Traction	1
33	37-6760	Shaft — Pivot	1
34	11-9760	Hex Hd. Self Tap. Screw	1
35	32121-45	Roll Pin	2
36	38-0800	Plate — Friction	1
37	43-7310	Traction Engagement Assy.	1
38	32128-32	Flange Locknut	1
39	38-4520	Spring — Compression	1
40	38-4490	Bracket — Traction	1
41	40-9680	Spacer	1
42	40-8350	Screw — Shoulder	1
43	3296-42	Locknut	1
44	32151-61	Ring — Retaining	1
45	38-7820	Bearing	1
46	37-8870	Spring — Friction Plate Frame	1
47	38-1400	Wheel Assembly	2
48	3290-243	Pin — Klik	2
49	37-6970	Shaft — Axle	1
50	37-6850	Bearing — Axle	2
51	32121-31	Roll Pin	2
52	37-6830	Cover — Bottom	1
53	37-6520	Gear — Axle	1
54	3-8664	Washer — Thrust	2
55	40-8190	Pulley & Shaft	1
56	38-4470	Bushing Assembly	1
57	32144-11	Hex Hd. Self Tap. Screw	2
*	37-7010	Tire Chain Kit (Optional)	1
*	12-4479	Loose Parts	1

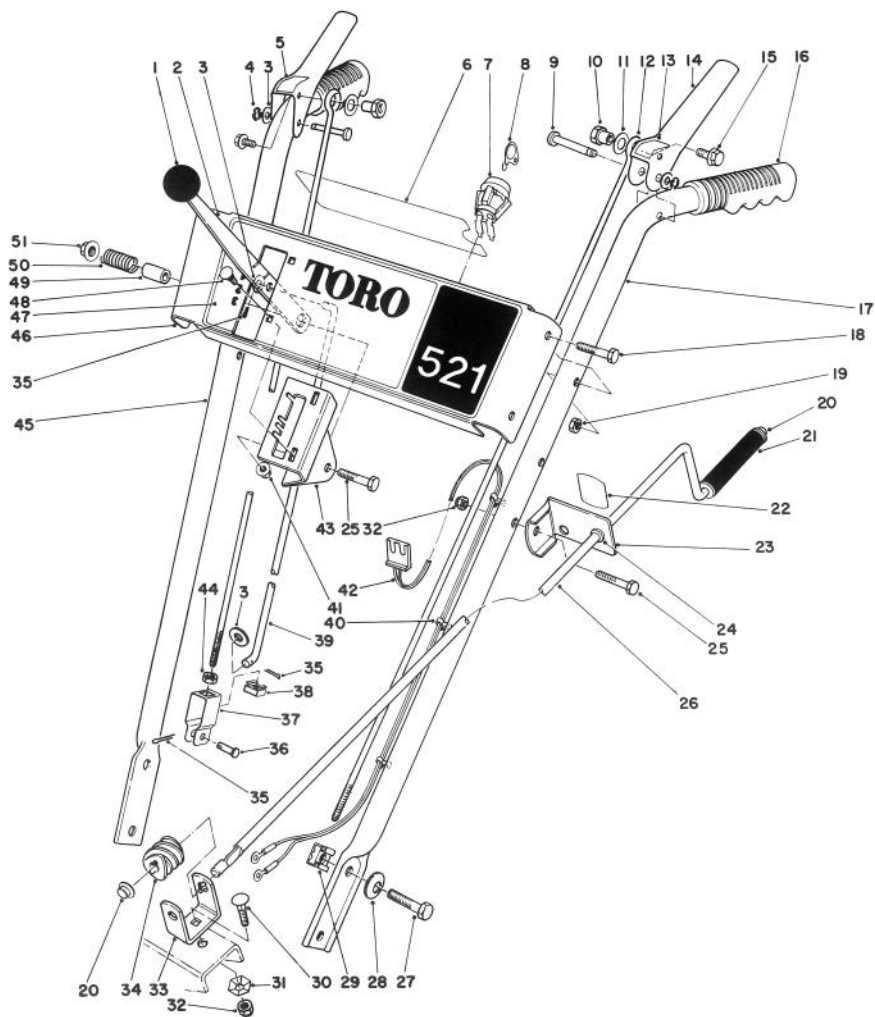
\*Not Illustrated



## ENGINE ASSEMBLY

Ref. No.	Part No.	Description	No. Used
1	3-4244	Idler Pulley	1
2	53-7570	Spring — Auger Disengage	1
3	8-8649	Auger Clutch (Incl. Ref. #29)	1
4	323-29	Capscrew	1
5	42-3560	Bolt — Shoulder	1
6	43-7370	Engine Pulley	1
7	52-2680	Gas Tank w/Cap	1
8		Engine	1
9	39-3860	Decal — Primer	1
10	37-8890	Decal — Throttle	1
11	39-3850	Decal — Choke	1
12	53-7680	Decal — Hot Surface Warning	1
13	32144-4	Self Tapping Screw	3
14	49-3040	Drain Tube	1
15	281-7	Pipe Plug	1

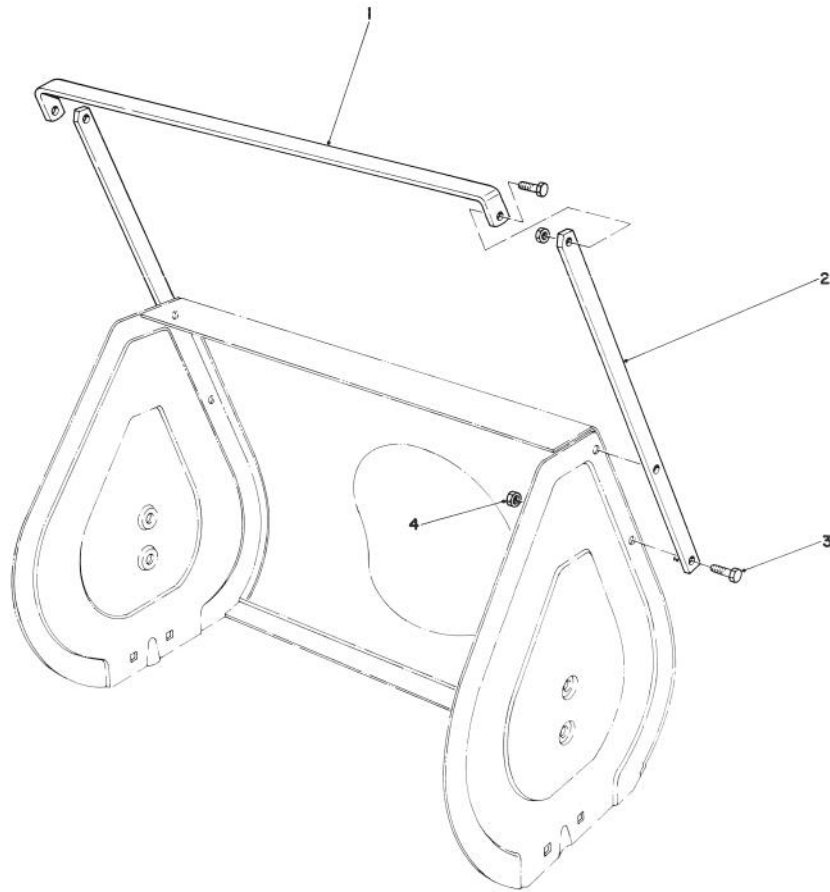
Ref. No.	Part No.	Description	No. Used
16	3296-29	Locknut	4
17	3256-23	Flat Washer	5
18	322-7	Capscrew	4
19	37-8990	Belt Retainer	1
20	3255-8	Lockwasher — External Tooth	1
21	3210-3	Capscrew	1
22	37-9090	V-Belt — Traction	1
23	37-9080	V-Belt — Auger	1
24	43-7290	Screw — Special	1
25	32152-4	Locknut	1
26	3290-320	Nut — Push On	1
27	3256-24	Flat Washer	1
28	37-6900	Belt Cover	1
29	40-8140	Molded Brake Assembly	1
30	32152-2	Locknut	1



## HANDLE ASSEMBLY

Ref. No.	Part No.	Description	No. Used
1	233-21	Knob	1
2	37-8820	Selector — Speed	1
3	3256-23	Washer	4
4	32151-73	Ring — Clip	2
5	52-5650	Decal — Auger Drive	1
6	54-9760	Decal — Escutcheon Back	1
7	40-5940	Switch — On-Off	1
8	33-2010	Key — Ignition	1
9	52-5600	Pin — Control Lever	2
10	47-4990	Post — Linkage Mounting	2
11	3256-24	Washer	2
12	52-5590	Link — Upper	2
13	52-5630	Decal — Wheel Drive	1
14	52-5580	Handle — Control	2
15	3234-13	Screw — Hex Flange Hd.	2
16	37-9110	Grip — Handle	2
17	52-5570	Handle — Left	1
18	321-37	Screw — Hex Hd.	4
19	32152-4	Nut — Lock	4
20	3290-320	Nut — Push	2
21	40-8230	Grip — Rod	1
22	29-6370	Decal — Chute Direction	1
23	6-3069	Bracket — Chute Control (Incl. Ref. #22 & 24)	1
24	256-249	Nyliner	1
25	322-7	Screw — Hex Hd.	2
26	40-8270	Rod — Chute Control	1

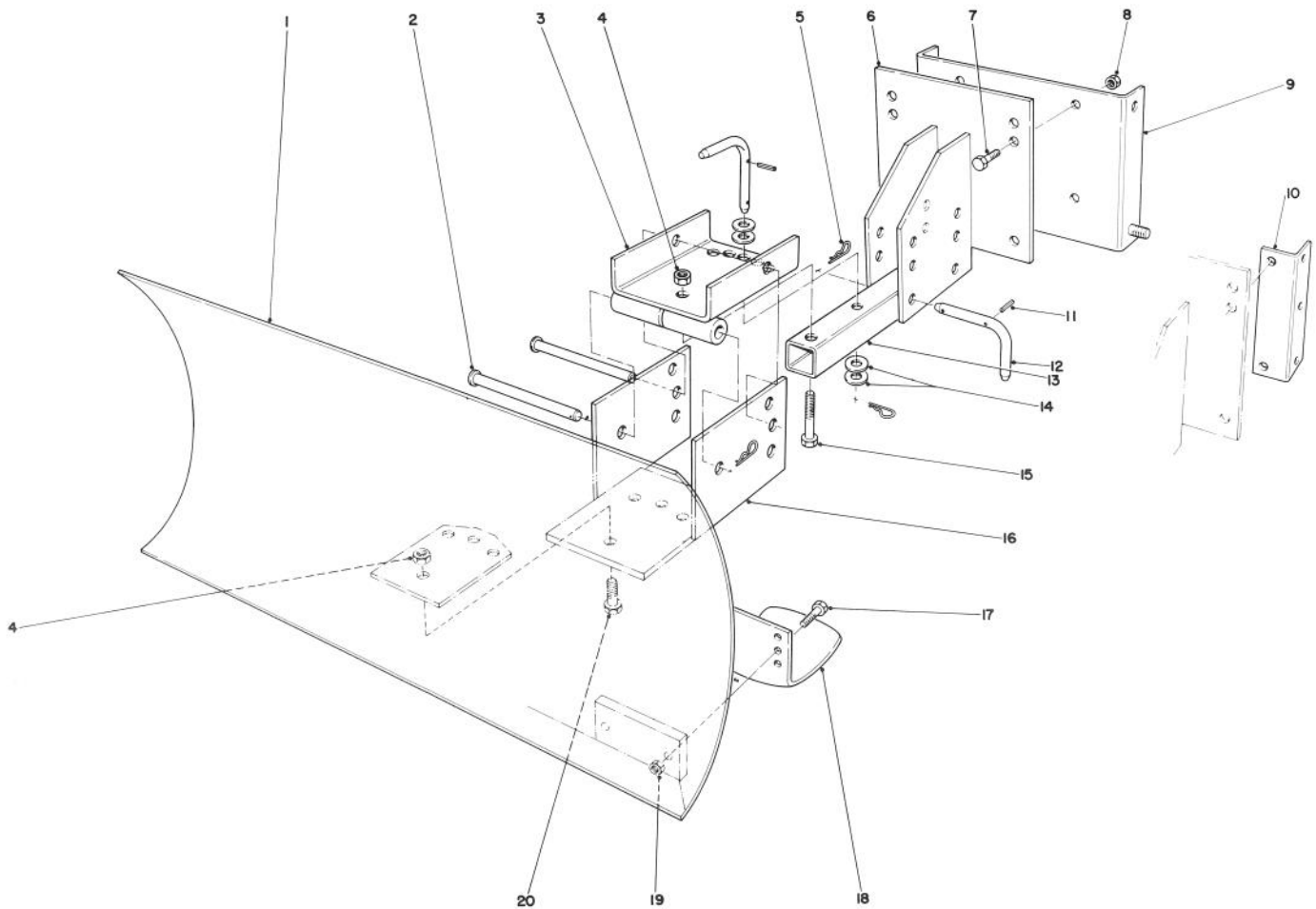
Ref. No.	Part No.	Description	No. Used
27	322-2	Screw — Cap Hex Hd.	4
28	3290-456	Washer — Belleville	4
29	3290-196	Nut — Retainer	4
30	3230-2	Bolt — Carriage	1
31	3290-238	Washer — Pyramidal	1
32	3296-29	Nut — Lock	2
33	40-8280	Bracket — Chute Worm	1
34	40-8250	Gear — Worm	1
35	3272-4	Pin — Cotter	3
36	283-3	Pin — Clevis	1
37	39-3080	Clevis	1
38	32115-5	Nut — Retainer	1
39	39-7570	Rod — Speed Selector	1
40	17-9120	Mount — Wire	3
41	32128-32	Nut — Flange Lock	2
42	43-7390	Wire Harness Assembly (Incl. Ref. #40)	1
43	39-1280	Mount — Speed Selector	1
44	3218-1	Nut — Jam	1
45	52-5560	Handle — Right	1
46	43-7360	Panel — Escutcheon	1
47	53-7640	Decal — 521	1
48	3229-22	Bolt — Carriage	2
49	40-8130	Spacer — Speed Selector	1
50	37-9150	Spring	1
51	32128-13	Nut — Flange Lock	1



### DRIFT BREAKER KIT NO. 37-7020 (Optional)

Ref. No.	Part No.	Description	No. Used
1	38-0760	Drift Breaker — Top	1
2	38-0750	Drift Breaker — Side	2

Ref. No.	Part No.	Description	No. Used
3	322-4	Capscrew	6
4	3296-29	Locknut	6



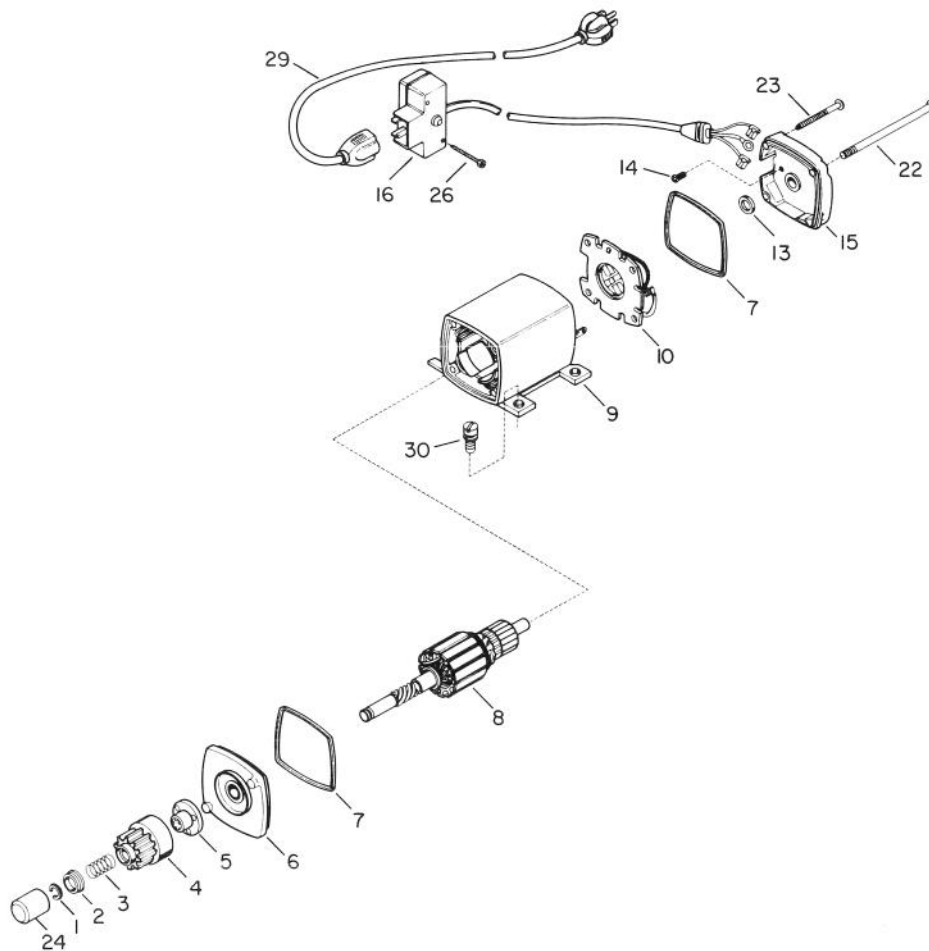
## GRADER BLADE ASSEMBLY MODEL 59099 (Optional)

Ref. No.	Part No.	Description	No. Used
1	7-4374	Blade	1
2	283-38	Clevis Pin	2
3	20-5090	Swivel Bracket	1
4	32152-3	Locknut	5
5	3290-322	Hairpin Cotter	5
6	20-5170	Mounting Plate	1
7	323-6	Capscrew	4
8	32152-2	Locknut	4
9	22-4920	Mounting Plate Bracket (Used with 826 and 1132 only)	1
10	39-7850	Mounting Rail (Used with 3521 & 521 Units only)	2
11	32121-45	Roll Pin	3
12	20-5210	Pivot Pin (Incl. Ref. #11)	3
13	20-5140	Tongue Blade	1

Ref. No.	Part No.	Description	No. Used
14	3256-5	Flat Washer	4
15	325-11	Capscrew	1
16	20-5130	Blade Adjustment	1
17	322-6	Capscrew	4
18	7-1023	Skid	2
19	32152-1	Locknut	4
20	325-5	Capscrew	4
*		Air Cleaner Kit	1
*†	650152	Screw	2
*†	31752	Decal	1
*†	31692	Body	1
*†	30727	Element	1
*†	28820	Screw w/Lockwasher	2
*†	31691	Bracket	1
*†	27277	Gasket	1

\*Not Illustrated

†Obtain from your local Tecumseh Dealer

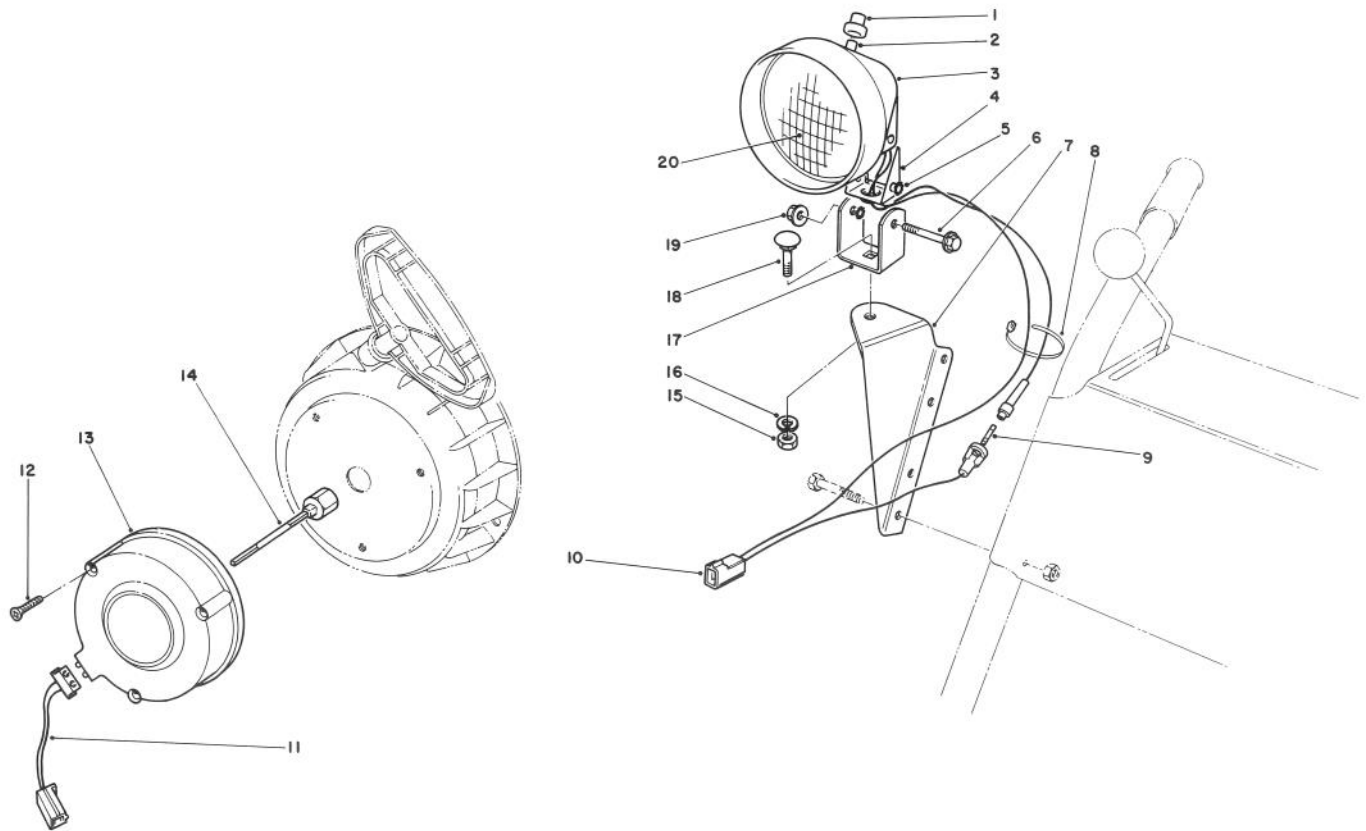


## STARTER MOTOR KIT NO. 33328C

Ref. No.	Part No.	Description	No. Used
1	33842	Ring — Retainer	1
2	33430	Retainer — Spring	1
3	33431	Spring — Anti-Drift	1
4	33432	Gear	1
5	33433	Nut — Engaging	1
6	35449	Cap Assy. — Drive End (Incl. Ref. #7)	1
7	35450	“O” Ring	2
8	33436A	Armature	1
9	35457	Housing Assembly	1
10	35452	Card Assembly — Brush	1

Ref. No.	Part No.	Description	No. Used
13	590500	Washer — Thrust	1
14	33441	Screw — Ground	1
15	35453	Cap Assy. — Commutator End (Incl. Ref. #7)	1
16	35454	Box Assembly — Switch	1
22	35458	Bolt — Case	2
23	35456	Screw — Grounding	1
24	33451	Cover — Dust	1
26	650819	Screw — Hex Hd. Self-Tap	2
29	32450A	Cord — Extension (10' 6")	1
30	30063	Screw — Hex Hd. Sems	4





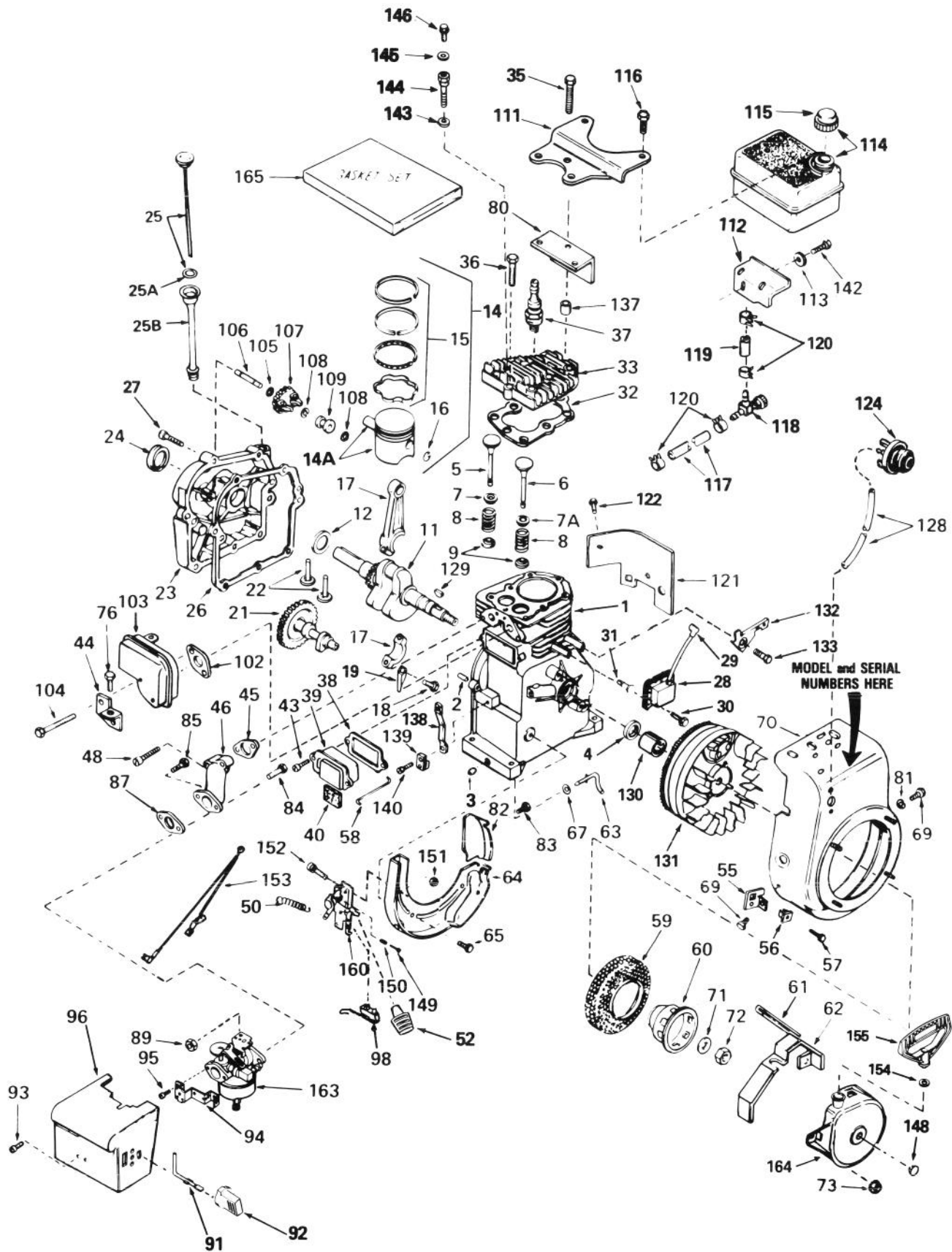
### LIGHT KIT NO. 54-9821 (Optional)

Ref. No.	Part No.	Description	No. Used
1	218-473	Boot — Switch	1
2	218-553	Switch Assembly	1
3	218-552	Bucket — Headlamp	1
4	218-554	Bracket	1
5	3255-8	Washer — Lock	2
6	322-13	Screw — Hex Flange Hd.	1
7	54-9830	Mount — Lamp	1
8	3290-378	Tie Wrap	2
9†		Fuse — 7-1/2 Amp.	1
10	218-555	Wire Assembly	1
11	2210-272	Connector — Light	1
12	2210-273	Screw — Self Tapping	3

Ref. No.	Part No.	Description	No. Used
13	2210-274	Alternator	1
14	2210-268	Shaft — Alternator 3"	1
*	2210-269	Shaft — Alternator 4" (Used with 824 Units only)	1
15	3217-7	Nut — Hex	1
16	3253-21	Washer — Lock	1
17	218-556	Bracket — U	1
18	3231-2	Bolt — Carriage	1
19	32128-35	Nut — Flange Lock	1
20	218-16	Lens — Sealed Beam	1
*	54-9871	Headlamp Assembly Complete (Incl. Ref. #1-6, 9-10 & 15-20)	1

\*Not Illustrated  
†Obtain Locally

# ENGINE TECUMSEH MODEL HS50-67259F



# ENGINE TECUMSEH MODEL HS50-67259F

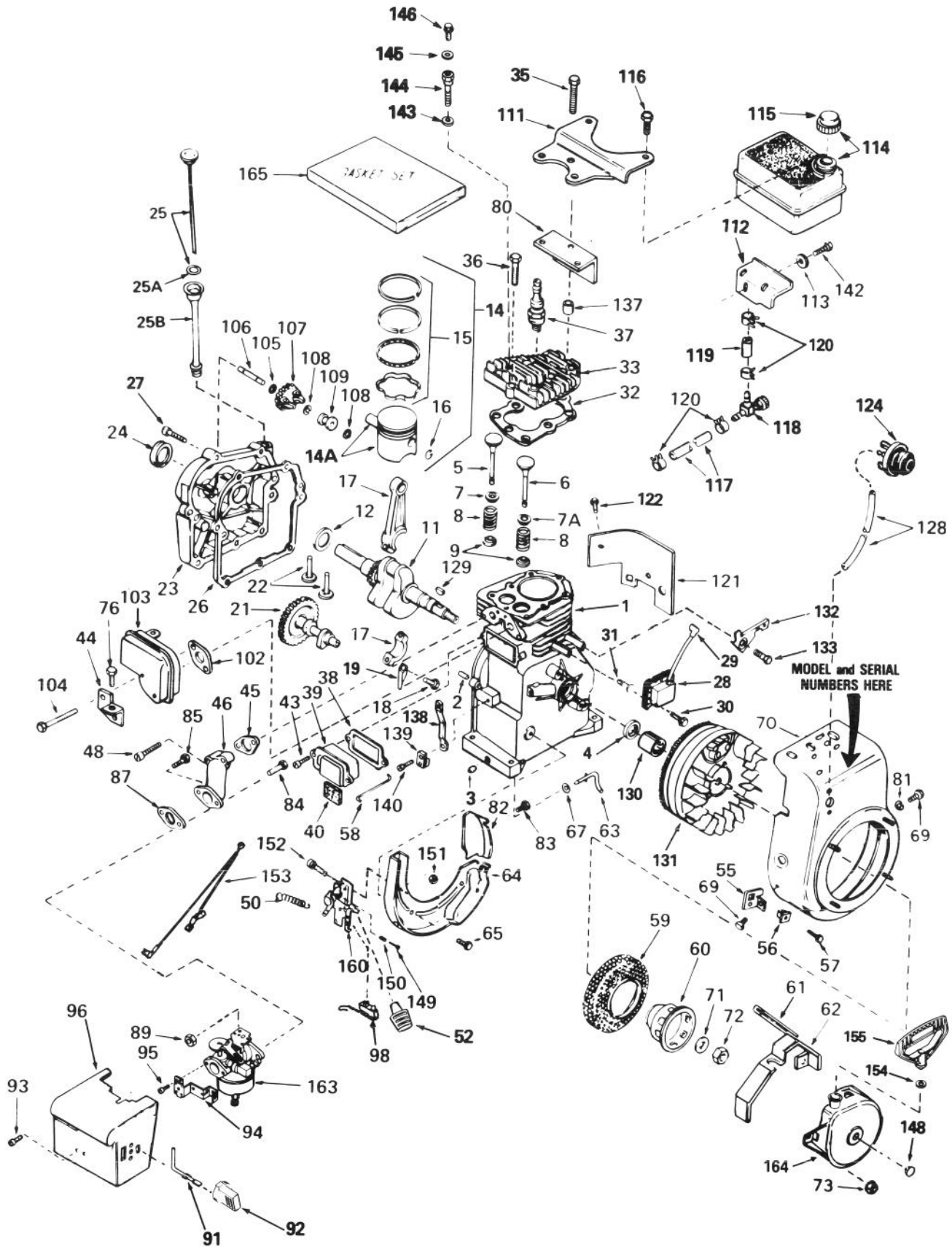
Ref. No.	Part No.	Description	No. Used
1	33674A	Cylinder Assembly (Incl. Ref. #2, 3 & 4)	1
2	26727	Pin — Dowel	2
3	27642	Plug — Sq. Hd. (Oil Drain)	2
4	32600	Seal — Oil	1
5	32644A	Valve — Intake (Std.) (Incl. Ref. #9)	1
5	32645A	Valve — Intake (1/32" oversize) (Incl. Ref. #9)	1
6	29313C	Valve — Exhaust (Std.) (Incl. Ref. #9)	1
6	29315C	Valve — Exhaust (1/32" oversize) (Incl. Ref. #9)	1
7	31671	Cap — Upper Valve Spring (Intake)	1
7A	33678	Cap — Upper Valve Spring (Exhaust)	1
8	31672	Spring — Valve	2
9	31673	Cap — Lower Valve Spring	2
11	34740	Crankshaft Assembly	1
12	32323	Washer — Thrust	1
14	34535	Piston — Pin & Ring Assy. (Std.) (Incl. Ref. #14A, 15 & 16)	1
14	34536	Piston — Pin & Ring Assembly (.010 oversize) (Incl. Ref. #14A, 15 & 16)	1
14	34537	Piston — Pin & Ring Assembly (.020 oversize) (Incl. Ref. #14A, 15 & 16)	1
14A	33562B	Piston & Pin Assy. (Std.) (Incl. Ref. #16)	1
14A	33563B	Piston & Pin Assembly (.010 oversize) (Incl. Ref. #16)	1
14A	33564B	Piston & Pin Assembly (.020 oversize) (Incl. Ref. #16)	1
15	33567	Ring Set — Piston (Std.)	1
15	33568	Ring Set — Piston (.010 oversize)	1
15	33569	Ring Set — Piston (.020 oversize)	1
16	20381	Ring — Piston Pin Retaining	2
17	32875	Rod Assy. — Connecting (Incl. Ref. #18 & 19)	1
18	32610A	Screw — Connecting Rod	2
19	32654	Dipper — Oil	1
21	33158	Camshaft (Compression Release)	1
22	27241	Lifter — Valve	2
23	34674A	Cover — Cylinder (Incl. Ref. #24 & 106)	1
24	27897	Seal — Oil	1
25	34676	Dipstick — Oil (Incl. Ref. #25A)	1
25A	33590	"O" Ring	1
25B	33893A	Tube — Oil Fill	1

Ref. No.	Part No.	Description	No. Used
26	*27677	Gasket — Cylinder Cover	1
27	650488	Screw — Hex Hd. Sems	7
28	34443A	Solid State Assembly	1
29	610118	Cover — Spark Plug	1
30	650814	Screw — Hex Hd. Sems	2
31	650872	Stud — Lamination Mounting	2
32	*33554	Gasket — Cylinder Head	1
33	33016	Head — Cylinder	1
35	650694A	Screw — Hex Flange Hd.	5
36	6021A	Screw — Hex Flange Hd.	2
37	35395	Spark Plug — Resistor (Champion RJ-19LM)	1
38	*31619	Gasket — Valve Spring Cover	1
39	31337	Breather Assembly (Incl. Ref. #38 & 40)	1
40	31410	Element — Breather	1
43	650128	Screw — Fil. Hd. Sems	2
44	33333	Bracket — Carburetor Cover	1
45	*33673	Gasket — Intake Pipe	1
46	33691	Pipe — Intake	1
48	650664	Screw — Phil. Fil. Hd. Sems	2
50	31426	Spring — Extension	1
52	35440	Knob — Speed Control	1
55	34126	Bracket — Grommet Mounting	1
56	28545	Grommet — Plastic	1
57	650643	Screw — Pan Hd. Self-Tap	1
58	32698	Link — Governor-to-Throttle	1
59	35185	Screen — Starter Cup	1
60	34694	Cup — Starter	1
61	32576	Seal — Snow Guard	1
62	34127	Guard — Starter	1
63	31334	Rod — Governor	1
64	†33342	Baffle — Blower Housing	1
65	650561	Screw — Hex Washer Hd. Durluk	2
67	28277	Washer — Flat	1
69	29212	Screw — Hex Hd. Sems	2
70	34813A	Housing — Blower	1
71	650815	Washer — Belleville	1
72	650863	Nut — Flywheel	1
73	29752	Nut & Lockwasher	4
76	650735	Screw — Hex Hd. Sems Taptite	1
80	33344	Baffle — Heat	1
81	650168	Washer — Flat	1
82	33341	Extension — Baffle	1
83	650701	Screw — Hex Hd. Shakeproof Self-Drilling	1
84	6201	Screw — Hex Hd.	1
85	650870	Screw — Hex Hd.	1
87	*26756	Gasket — Carburetor	1
89	29752	Nut & Lockwasher	2
91	34582	Rod — Choke	1
92	35438	Knob — Choke	1
93	650257	Screw — Pan Hd. Sems	2

\*Indicates parts included in Gasket Set, Ref. #165.

†In original production, the speed control assembly is riveted to the blower housing baffle. Replacement speed control assembly includes screws and nuts for mounting. Replacement baffle has threaded holes.

# ENGINE TECUMSEH MODEL HS50-67259F (Continued)



## ENGINE TECUMSEH MODEL HS50-67259F (Continued)

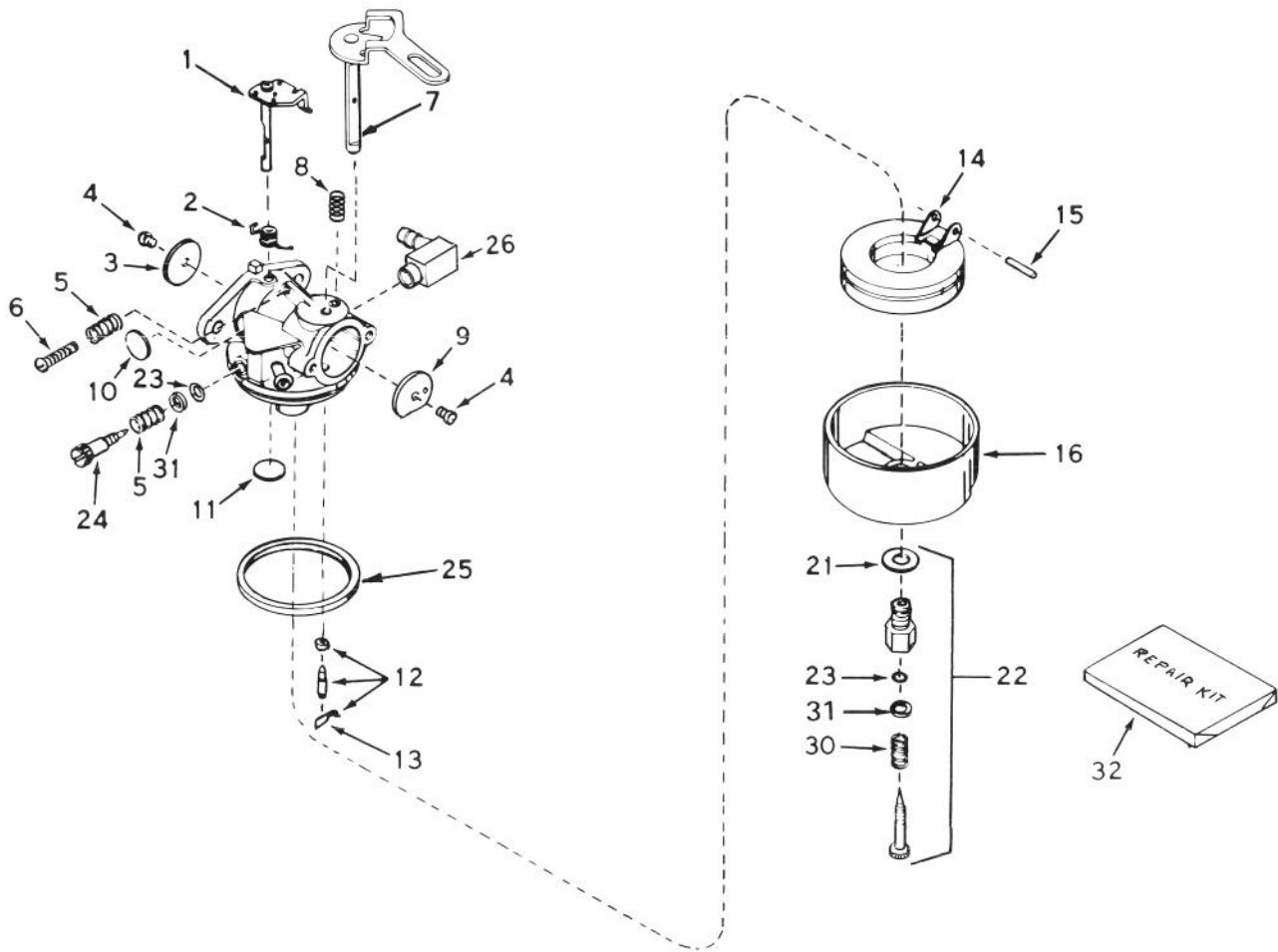
Ref. No.	Part No.	Description	No. Used
94	34583	Bracket — Choke	1
95	28820	Screw — Fil. Hd. Sems	2
96	35072	Cover — Carburetor	1
98	610973	Terminal Assembly	1
102	*33670	Gasket — Muffler	1
103	33697A	Muffler	1
104	650327	Screw — Fil. Hd. Sems	2
105	30590A	Washer — Flat	1
106	30574	Shaft — Mechanical Governor	1
107	30591	Gear Assembly — Governor (Incl. Ref. #105)	1
108	29193	Ring — Retaining	2
109	30588A	Spool — Governor	1
111	28371B	Bracket — Fuel Tank, Upper	1
112	34182	Bracket — Fuel Tank, Lower	1
113	650675	Washer — Flat	1
114‡		Tank — Fuel (Incl. Ref. #115)	1
115‡		Cap — Fuel Tank	1
116	650665	Screw — Hex Washer Hd. Thread Cutting	2
117	30705	Line — Fuel	1
118	32961	Valve — Fuel Shut-Off	1
119	29774	Line — Fuel	1
120	26460	Clamp — Fuel Line	4
121	29745	Extension — Blower Housing	1
122	650128	Screw — Fil. Hd. Sems	1
124	34814	Primer Assembly	1
128	32180C	Line — Primer	1
129	610961	Key — Flywheel	1

Ref. No.	Part No.	Description	No. Used
130	34080	Spacer — Flywheel Key	1
131	611081	Flywheel	1
132	34212	Bracket — Hold Down	1
133	30200	Screw — Hex Washer Hd. Self-Tap Sems	1
137	28212	Spacer — Tank Bracket	2
138	31510	Lever — Governor	1
139	31335	Clamp — Governor Lever	1
140	650548	Screw — Hex Washer Hd.	1
142	650805	Screw — Hex Hd. w/Belleville Washer	1
143	650691	Washer — Flat	1
144	650818	Screw — Special Hex Hd.	1
145	8345	Washer — Flat	1
146	30688	Screw — Hex Hd. Sems	1
148	35161	Plug — Starter Button	1
149	650549	Screw — Fil. Hd.	1
150	31342	Spring — Compression	1
151	†30322	Locknut — Hex "Keps"	2
152	†650139	Screw — Fil. Hd. Sems	2
153	35253	Wire — Ground	1
154	650168	Washer — Flat	1
155	590574	Starter Handle — Mitten Grip	1
160	†33858A	Bracket — Speed Control (Incl. Ref. #98 & 149-152)	1
163	632107	Carburetor (Incl. Ref. #87)	1
164	590604	Starter Assembly — Rewind	1
165	33683	Gasket Set (Incl. items marked *)	1

\*Indicates parts included in Gasket Set, Ref. #165.

†In original production, the speed control assembly is riveted to the blower housing baffle. Replacement speed control assembly includes screws and nuts for mounting. Replacement baffle has threaded holes.

‡Supplied by Toro.

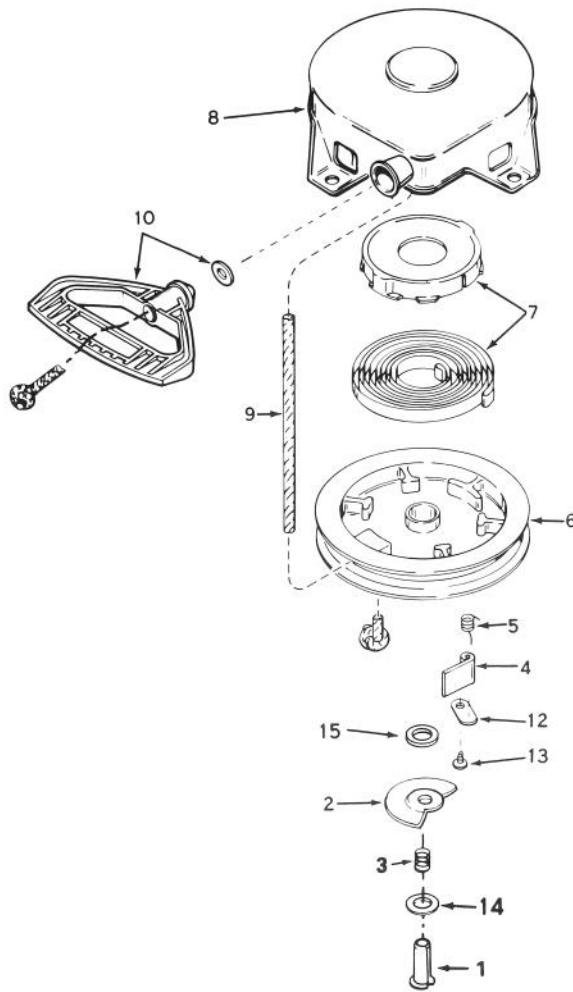


## CARBURETOR NO. 632107

Ref. No.	Part No.	Description	No. Used
1	631615	Shaft & Lever Assy. — Throttle	1
2	631767	Spring — Throttle Return	1
3	631036	Shutter — Throttle	1
4	650506	Screw	2
5	630766	Spring — Idle Regulating Screw	2
6	650417	Screw — Idle Regulating	1
7	632108	Shaft & Lever Assy. — Choke	1
8	630735	Spring — Choke Stop	1
9	631815	Shutter — Choke	1
10	*630748	Plug — Welch	1
11	*631027	Plug — Welch	1
12	*631021	Inlet Needle — Seat & Clip Assy. (Incl. Ref. #13)	1
13	631022	Clip — Inlet Needle	1

Ref. No.	Part No.	Description	No. Used
14	632019	Float — Carburetor	1
15	*631024	Shaft — Float	1
16	631867	Bowl — Float	1
21	27110	Gasket — Bowl-to-Body	1
22	*31839	Adjustment Screw Assy. — Main (Incl. Ref. #21, 23, 30 & 31)	1
23	*630740	“O” Ring — Adjustment Screw	2
24	*631078	Screw — Idle Adjustment	1
25	*631028	Gasket — Bowl-to-Body	1
26	631807	Fitting — Fuel Inlet	1
30	630738	Spring — Main Adjustment Screw	1
31	630739	Washer — Flat	2
32	31840	Repair Kit	1

\*Items Included in Repair Kit Ref. #32.



## REWIND STARTER NO. 590604

Ref. No.	Part No.	Description	No. Used	Ref. No.	Part No.	Description	No. Used
1	590599	Pin — Spring	1	9	590451A	Rope — Starter	1
2	590603	Cam — Dog	1	10	590574	Starter Handle — Mitten Grip (Not included with Starter)	1
3	590598	Spring — Brake	1	12	590476	Retainer — Dog	1
4	590148	Dog — Starter	1	13	590477	Screw	1
5	590475	Spring — Dog	1	14	590600	Washer	1
6	590478	Pulley	1	15	590601	Washer	1
7	590414	Spring & Keeper Assembly	1				
8	590605	Housing — Starter	1				

## PRODUCT CHANGES

In an effort to make improvements available to TORO owners as quickly as possible, minor changes are incorporated into Toro's products from time to time that do not become immediately shown in the Parts Catalog. If such a change apparently has been made in your unit, which is not reflected in your manual, see your TORO Distributor or his Authorized TORO Service Dealer for information and part numbers.

## IDENTIFICATION AND ORDERING

### MODEL AND SERIAL NUMBERS

The Snowthrower has two identification numbers: a model number and a serial number. The two numbers are stamped on a decal which is located on back of the engine mounting plate. In any correspondence concerning the Snowthrower, supply model and serial numbers to assure that correct information and replacement parts are obtained.

To order replacement parts from an Authorized TORO Service Dealer, supply the following information:

1. Model and serial numbers of the Snowthrower.
2. Part number, description, and quantity of part(s) desired.

**Note:** Do not order by reference number if a parts catalog is being used; use the PART NUMBER.

## The Toro Promise

### A TWO YEAR LIMITED WARRANTY On All Gasoline Powered Consumer Products

*The Toro Company promises to repair your TORO Product if defective in materials or workmanship. The following time periods from the date of purchase apply:*

Residential Product . . . . . 2 Years  
Residential Products Used Commercially . . . . . 45 Days

*The costs of parts and labor are included, but the customer pays the transportation costs. Just return any residential product to an Authorized TORO Service Dealer or TORO Distributor.*

Should you feel your TORO Product is defective and wish to rely on The Toro Promise, the following procedure is recommended:

1. Contact any Authorized TORO Service Dealer, TORO Master Service Dealer, or TORO Distributor (the Yellow Pages of your telephone directory is a good reference source).
2. He will either instruct you to return the product to him or recommend another Authorized TORO Service outlet which might be more convenient.
3. Bring the product along with your original sales slip, or other evidence of purchase date, to the service dealer.
4. The servicing dealer will inspect the unit, advise you whether the product is defective and, if so, make all repairs necessary to correct the defect without extra charge to you.

If for any reason you are dissatisfied with the dealer's analysis of the defect or the service performed, you may contact us.

Write:

TORO Consumer Service Department  
8111 Lyndale Avenue South  
Minneapolis, Minnesota 55420

The above remedy of product defects through repair by an Authorized TORO Service Dealer is the purchaser's sole remedy for any defect.

THERE IS NO OTHER EXPRESS WARRANTY. ALL IMPLIED WARRANTIES OF MERCHANTABILITY AND

FITNESS FOR USE ARE LIMITED TO THE DURATION OF THE EXPRESS WARRANTY.

Some states do not allow limitations on how long an implied warranty lasts, so the above limitation may not apply to you.

This warranty applies only to parts or components which are defective and does not cover repairs necessary due to normal wear, misuse, accidents, or lack of proper maintenance. Regular, routine maintenance of the unit to keep it in proper operating condition is the responsibility of the owner.

All warranty repairs reimbursable under The Toro Promise must be performed by an Authorized TORO Service Dealer using Toro approved replacement parts.

Repairs or attempted repairs by anyone other than an Authorized TORO Service Account are not reimbursable under The Toro Promise. In addition, these unauthorized repair attempts may result in additional malfunctions, the correction of which is not covered by warranty.

THE TORO COMPANY IS NOT LIABLE FOR INDIRECT, INCIDENTAL OR CONSEQUENTIAL DAMAGES IN CONNECTION WITH THE USE OF THE PRODUCT INCLUDING ANY COST OR EXPENSE OF PROVIDING SUBSTITUTE EQUIPMENT OR SERVICE DURING PERIODS OF MALFUNCTION OR NON-USE.

Some states do not allow the exclusion or limitation of incidental or consequential damages, so the above limitation or exclusion may not apply to you.

This warranty gives you specific legal rights, and you may also have other rights which vary from state to state.

## COUNTRIES OTHER THAN THE UNITED STATES OR CANADA

Customers who have purchased TORO products exported from the United States or Canada should contact their TORO Distributor (Dealer) to obtain guarantee policies for your country, province or state. If for any reason

you are dissatisfied with your Distributor's service or have difficulty obtaining guarantee information, contact the TORO importer. If all other remedies fail, you may contact us at The Toro Company.