



## Customer Service Bulletin Commercial Business Group

---

**Rake-O-Vac<sup>®</sup>**

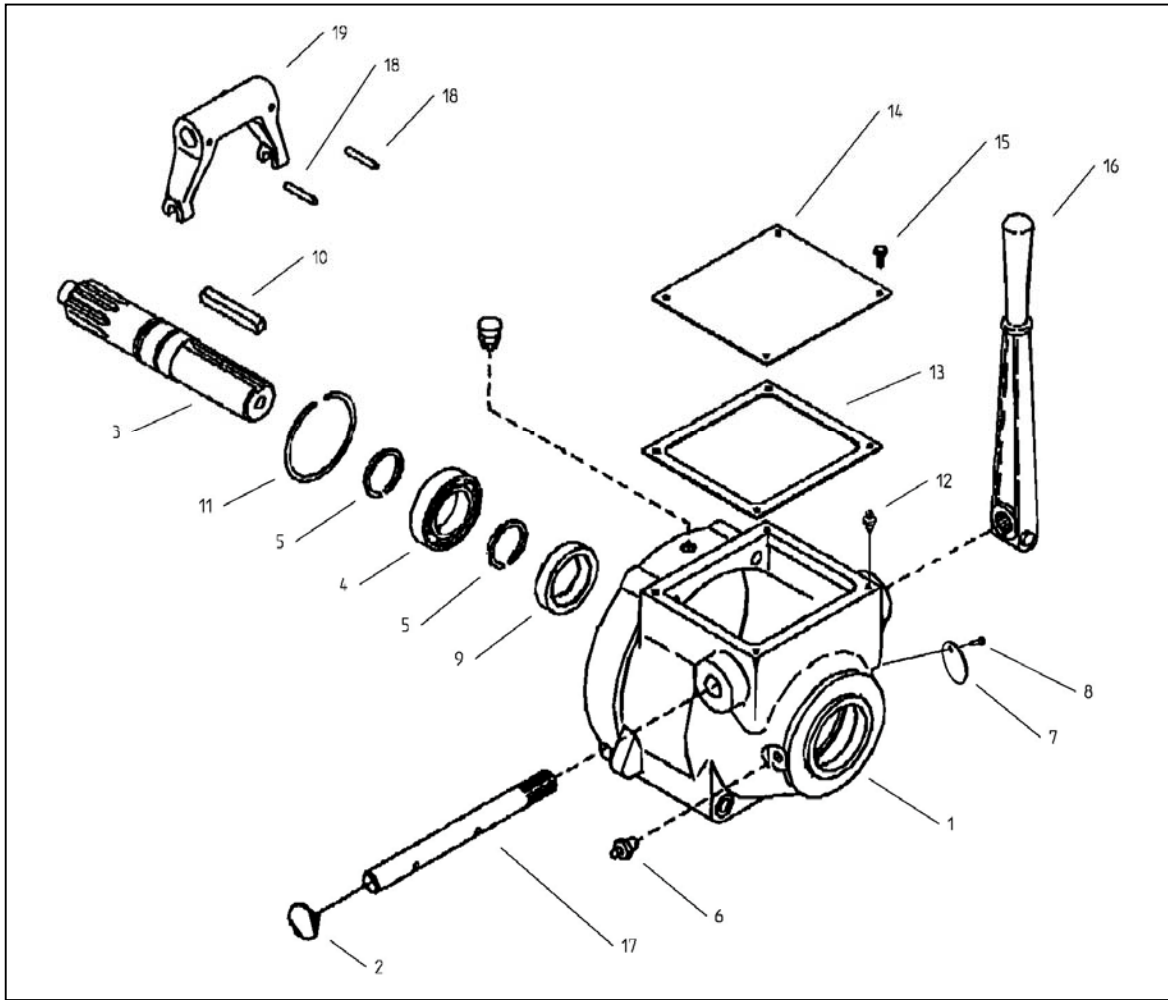
**Date: August 22, 2003**

<b><u>Model/Serial Range:</u></b>	<b><u>Model Number:</u></b>	<b><u>Serial Numbers:</u></b>
	07050	50101-210000155

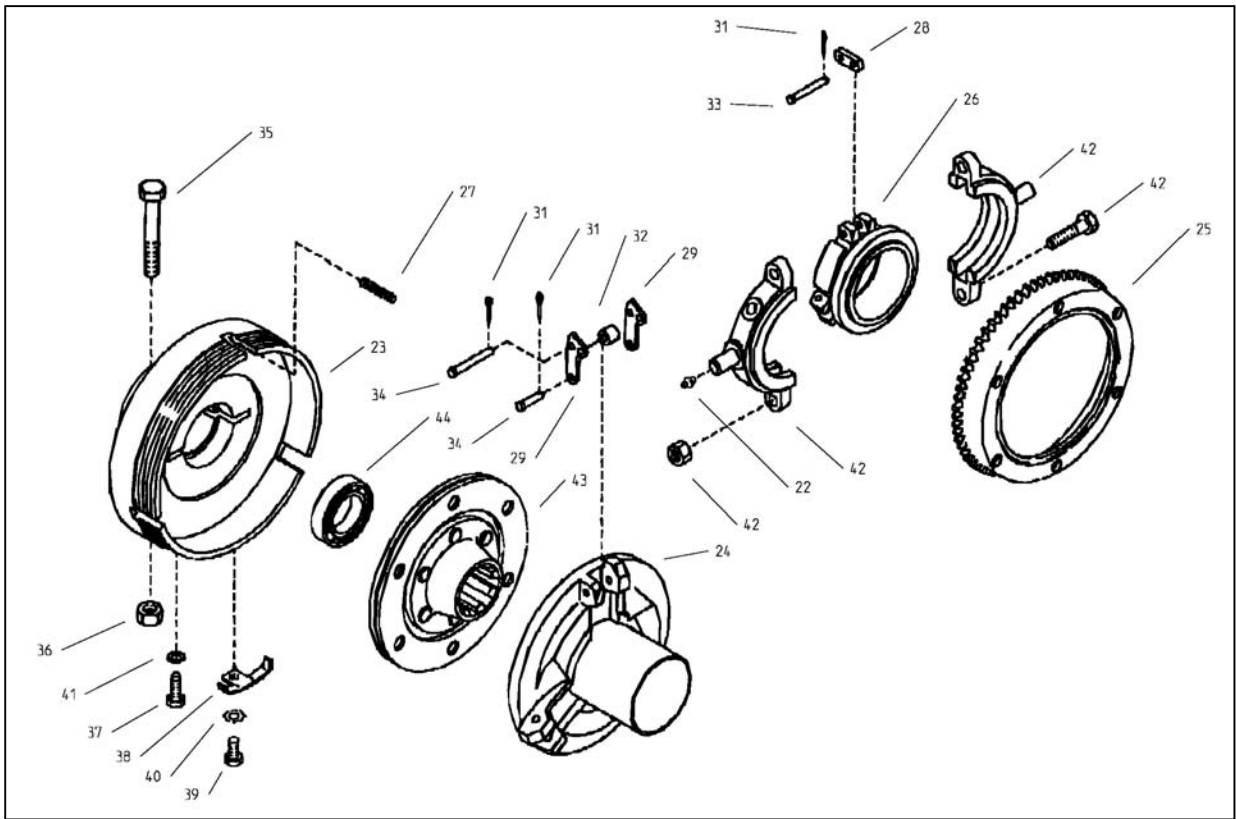
**Subject: Parts Availability for the Rake-O-Vac PTO Clutch**

Use the attached parts & cross reference lists when replacement parts are required for Clutch (107-1092) or the Kohler supplied clutch. These lists show each manufacturer's part and reference number to assist you when looking at these non-Toro manufacturer's parts manuals.

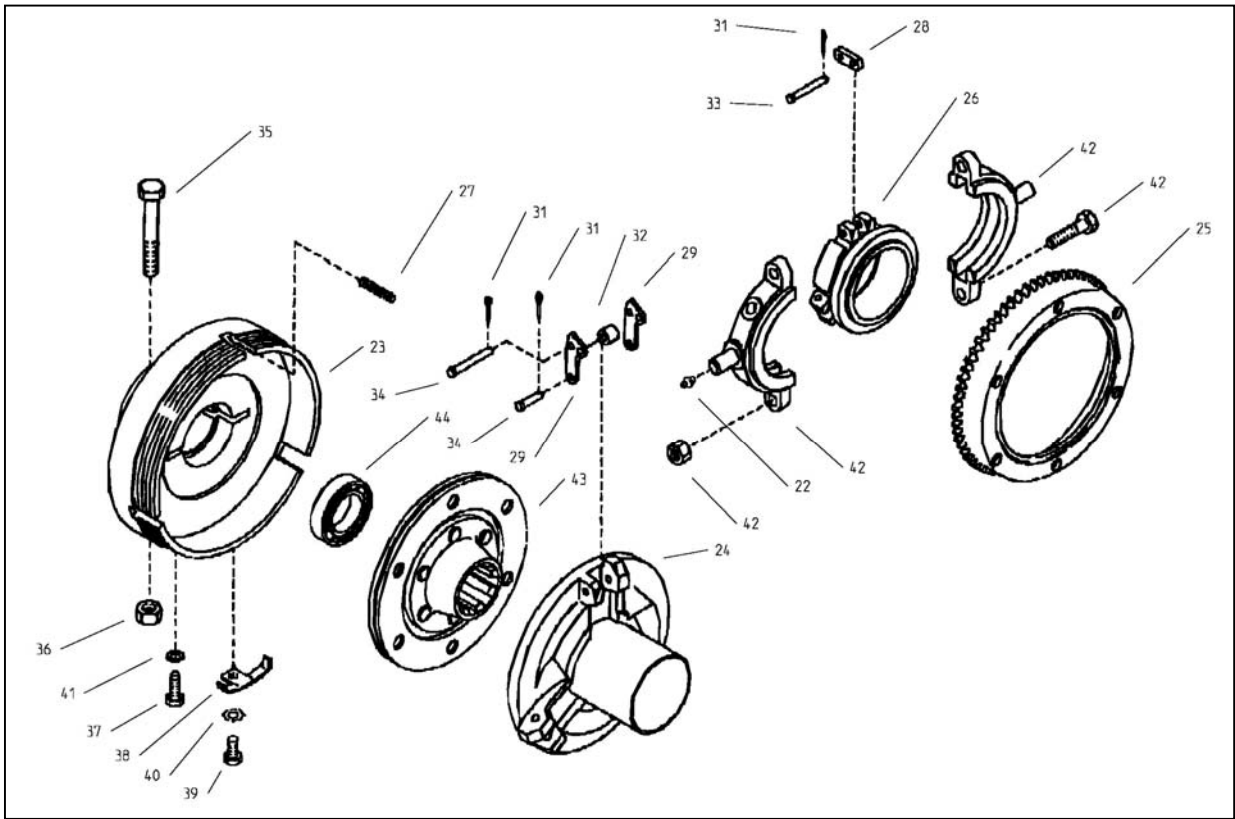
Note: Also refer to Rake-O-Vac Service Bulletin, Specialty Equipment, dated May 8, 2003, for more information on these clutches.



DESCRIPTION	QTY	REF #	TORO P/N	NACD	NACD P/N	KOHLER	KOHLER P/N	ROCKFORD	ROCKFORD P/N
PTO-HOUSING	1	1	107-1093	1	LC100719			ST1	2-27433
EXPANSION PLUG	1	2	107-1094	13	LC100749	77	X-230-20	ST13	2-05656
DRIVE-SHAFT	1	3	107-1095	14	LC100566	84	234039	ST14	2-06222
MAIN BEARING	1	4	107-1096	15	LC100567	87	234035	ST15	2-07423
EXTERNAL SNAPRING	2	5	107-1097	19	LC100568	85	234037	ST19	2-06706
ZERK-GREASE	1	6	107-1098	22	7001-100808-00	NA	NA	NA	NA
PLATE INSTRUCTION	NA	7	NA	23	LC100699	NA	NA	NA	NA
SCREW MACHINE	NA	8	NA	24	LC100559	NA	NA	NA	NA
OIL-SEAL	1	9	107-1099	25	LC100570	86	234038	ST25	2-08915
KEY-SQUARE	1	10	107-1100	27	LC100572	71	NA	ST27	2-04492
INTERNAL SNAPRING	1	11	107-1101	28	LC100571	88	4814102	ST28	2-06773
ZERK-GREASE	2	12	107-1102	29	LC100668	NA	NA	NA	NA
HOUSING OVERASKET	1	13	107-1103	3	LC100557	72	2404128	ST3	2-27437
HOUSING COVER	1	14	107-1104	4	LC100700	73	2409637	ST2	2-27438
SCREW-HEX CAP	4	15	321-4	5	7001-100751-00	76	X-22-19	ST5	2-27443
LEVER-SHIFTING	1	16	107-1105	6	LC100560	80	A-234026	ST6	3-08366
CROSS-SHAFT	1	17	107-1106	7	LC100698	79	2414401	ST7	2-27436



DESCRIPTION	QTY	REF #	TORO P/N	NACD	NACD P/N	KOHLER	KOHLER P/N	ROCKFORD	ROCKFORD P/N
PIN-ROLL	2	18	107-1107	8	LC100562	83	274101	ST8	2-05024
CLUTCH YOKE	1	19	107-1108	9	LC100434	82	A-234027	ST9	2-07368
CLUTCH ASM	NA	20	NA	NS	L100672	NA	NA	NA	NA
MANUAL SERVICE	NA	21	NA	NS	LC100754	NA	NA	NA	NA
ZERK-GREASE	1	22	107-1109	29	LC100668	NA	NA	NA	NA
CLUTCH-BODY	1	23	107-1110	31	LC100675	107	2408108	ST31	2-24726
PRESSURE PLATE	1	24	107-1111	33	LC100548	97	A-234045	ST33	3-08832
ADJUSTING RING	1	25	107-1112	36	LC100546	90	234056	ST36	2-05817
SLEEVE-RELEASE	1	26	107-1113	40	LC100551	92	234054	ST40	2-06529
SPRING-SEPARATOR	3	27	107-1114	400	LC100532	103	234055	400	NA
LINK-CONNECTING	6	28	107-1115	401	LC100525	94	234050	401	NA
LEVER-PRESSURE PLATE	6	29	107-1116	402	LC100540	98	234046	402	NA
PIN-LEVER	3	30	107-1117	403	LC100529	101	234047	403	NA
COTTER-PIN	9	31	107-1118	404	LC100530	NA	NA	404	NA
ROLLER-PRESSURE PLATE	3	32	107-1119	405	LC100531	100	234048	405	NA
PIN CLEVIS	3	33	107-1120	406	LC100527	NA	NA	NA	NA
PIN CLEVIS	3	34	107-1121	407	LC100528	NA	NA	NA	NA
SCREW-HEX 3/8-16 X 1-1/4	2	35	323-7	408	7001-100491-00	108	X-7-2	408	NA
NUT-HEX 3/8	2	36	3217-7	410	7001-100476-40	111	X-83-4	410	NA



DESCRIPTION	QTY	REF #	TORO P/N	NACD	NACD P/N	KOHLER	KOHLER P/N	ROCKFORD	ROCKFORD P/N
SET-SCREW DOG PT.	1	37	107-1122	411	LC100522	113	234073	411	NA
ADJUSTMENT LOCK	1	38	107-1123	412	LC100541	104	234043	412	NA
SCREW-HEX 1/4-20 X 3/8	1	39	321-7	413	LC100523	106	X-52-22	413	NA
WASHER-LOCK 1/4	1	40	3255-7	414	LC100534	105	X-22-11	414	NA
WASHER-LOCK 5/16	1	41	3253-4	415	LC100533	112	X-21-1	415	NA
BEARING-RELEASE ASM	1	42	107-1124	43	LC100552	93	A-234053	ST43	3-07537
FRICITION-DISC	1	43	107-1125	49	L100550	91	A-234044	ET49	4-10237
BEARING-PILOT	1	44	107-1126	50	LC100547	102	234042	ST50	2-07496
PLATE ADAPTER	1	45	100-8166	NA	NA	NA	NA	NA	NA
GASKET-CLUTCH HOUSING	1	46	100-8167	NA	NA	NA	NA	NA	NA
SCREW-HH	2	47	324-31	NA	NA	NA	NA	NA	NA
WASHER-LOCK EXT.	2	48	3255-16	NA	NA	NA	NA	NA	NA
SPACER	2	49	37-4700	NA	NA	NA	NA	NA	NA
COLLAR-ROLLED, SCREW	2	50	105-7868	NA	NA	NA	NA	NA	NA
SCREW-HH	2	51	324-12	NA	NA	NA	NA	NA	NA
WASHER-LOCK	2	52	3253-6	NA	NA	NA	NA	NA	NA
WASHER	2	53	3256-5	NA	NA	NA	NA	NA	NA