



## 72in Side Discharge Mower Groundsmaster® 200 Series

Model No. 30553 - 240000001 and up.

### Parts Catalog

---

#### Ordering Replacement Parts

To order replacement parts, please supply the part number, the quantity, and the description of each part desired.

#### Understanding Reference Numbers

Each Identified part in an illustration has a reference number. The reference number for a part also appears in the parts list, along with other information about the part.

This catalog uses two special reference number formats, one to indicate parts in a service assembly and another to indicate the quantity of a given part in an illustration.

#### Service Assembly Reference Numbers

Parts in service assemblies have reference numbers in the form a:b. The a represents the reference number of the entire service assembly and the b represents a sequential number unique to each part within the service assembly.

For example, a wheel assembly might be identified by reference number 6, the tire by 6:1, the valve by 6:2, and the wheel by 6:3. When you order the assembly identified by reference number 6, you receive all parts identified by reference numbers 6:1, 6:2, and 6:3. However, you may also order any part individually. Reference numbers of this type appear in illustrations and in part lists.

#### Reference Numbers Indicating Quantity

In an illustration, if a reference number indicates more than one part, the reference number has the form nX y. The n represents the quantity of the part, the X is the multiplication symbol, and the y represents the reference number.

For example, in an illustration, the reference number 2X 37 means that two of the parts identified by reference number 37 are indicated.

# Part Description Abbreviations

Part descriptions in this catalog may include the following abbreviations.

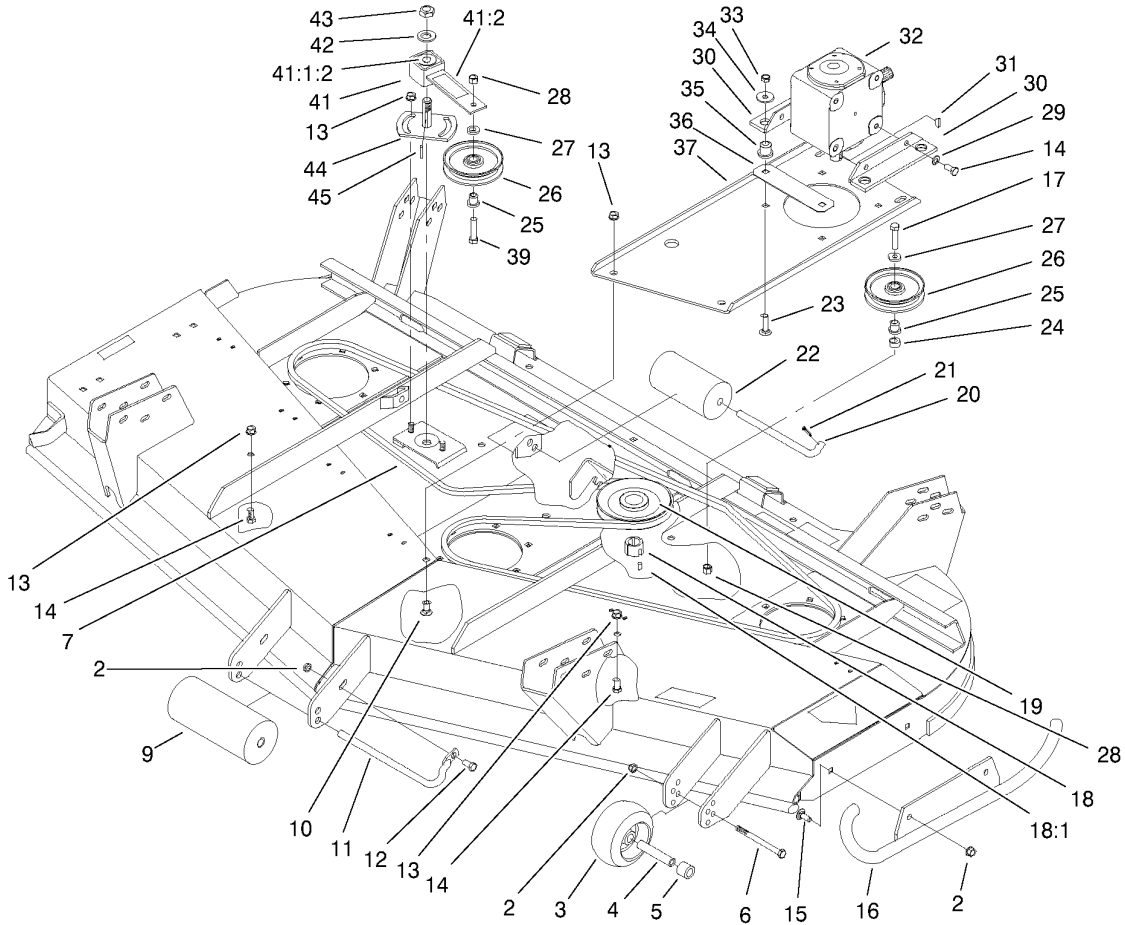
AR. ....	as required	HYD. ....	hydraulic
ASM. ....	assembly	INC. ....	incorporated
CARR. ....	carriage	LH. ....	left hand
DEG. ....	degrees	NI. ....	nylon insert
FH. ....	flat head	PPH. ....	phillips pan head
GA. ....	gauge	PTH. ....	phillips truss head
HF. ....	hex flange	PTO. ....	power take off
HH. ....	hex head	RH. ....	right hand
HHF. ....	hex head flange	SFH. ....	slotted fillister head
HHFTF. ....	hex head flange thread forming	SHH. ....	slotted hex head
HJ. ....	hex jam	SHWH. ....	slotted hex washer head
HLH. ....	hex lag head	SPH. ....	slotted pan head
HOC. ....	height-of-cut	SQH. ....	square head
HS. ....	hex	SRH. ....	slotted round head
HSBH. ....	hex socket button head	STD. ....	standard
HSFH. ....	hex socket flat head	TAP. ....	self tapping
HS. ....	hex socket head	TTH. ....	torx truss head
HWH. ....	hex washer head	WH. ....	wing head
HWHTF. ....	hex washer head thread forming		

## Footnotes

- ❶ Not illustrated
- ❷ Not serviced separately

## Contents

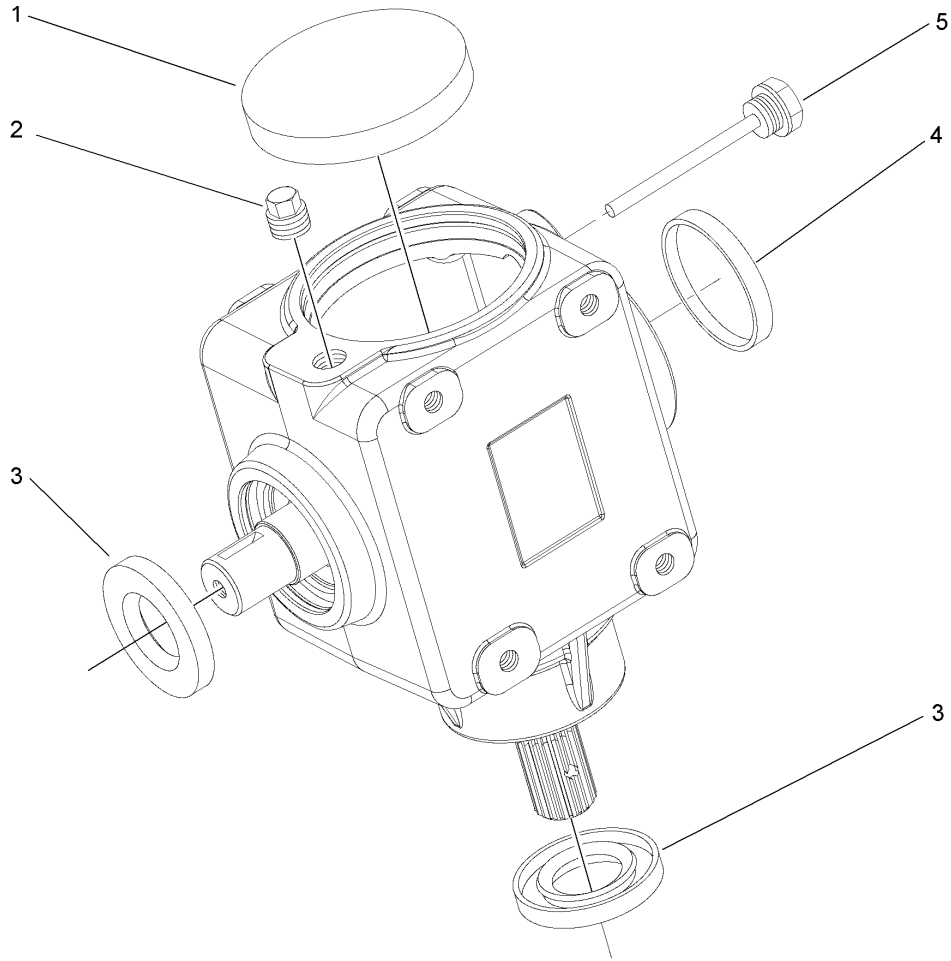
Description	Page	Description	Page
Roller and Drive Assembly	..... 3	Deck Assembly	..... 10
Gear Box Assembly No. 106-4355	..... 4		
Spindle and Blade Assembly	..... 5		
Cover and Deflector Assembly	..... 6		
Lift Arm and Castor Arm Assembly	..... 7		
Counterbalance Assembly	..... 9		



## Roller and Drive Assembly

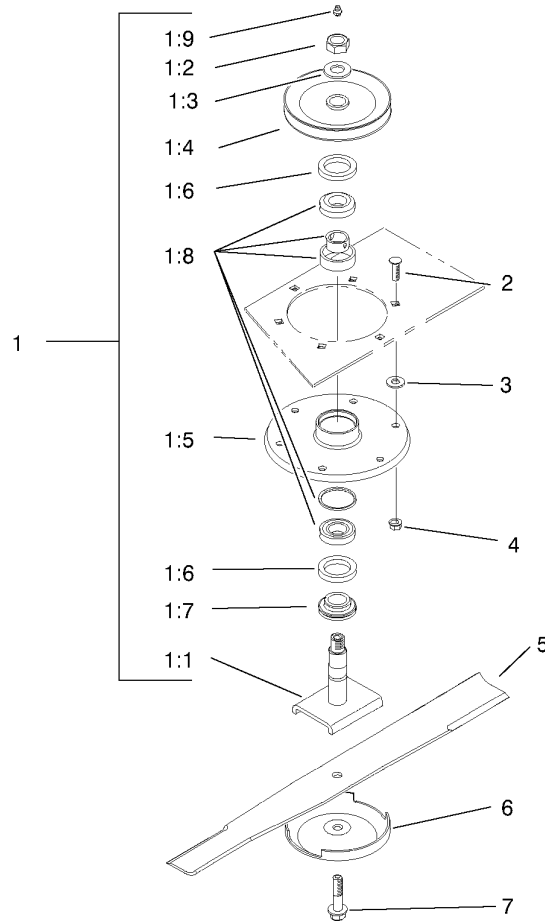
Ref	Part No.	Qty.	Description
2	32128-19	4	Nut-HF
3	68-2730	1	Wheel-Gage
4	98-7912	1	Tube-Spanner
5	98-7913	1	Tube-Spacer
6	323-23	1	Screw-HH
7	57-0240	1	V-Belt
9	68-6710	1	Roller
10	3231-27	4	Screw-CARR
11	68-6840	1	Shaft-Roller
12	3234-11	1	Screw-HHF
13	3290-357	8	Nut-HHF
14	323-4	6	Screw-HH
15	3231-22	2	Screw-CARR
16	98-7923-01	1	Skid
17	3211-9	1	Screw-HH
18	27-6140	1	Bushing-Lock, Taper
18:1	3245-9	2	Screw-Set
19	63-9900-03	1	Gearbox Pulley ASM
20	40-0340	2	Shaft-Roller, Rear
21	3272-11	2	Pin-Cotter
22	36-1740	2	Roller-Deck
23	3231-26	4	Screw-CARR
24	44-6390	1	Spacer
25	65-5950	2	Bushing-Pulley

Ref	Part No.	Qty.	Description
26	65-5940	2	Pulley-Idler
27	7-0081	2	Washer-Flat
28	3296-5	2	Nut-Lock, NI
29	3253-21	4	Washer-Lock
30	68-8560-03	2	Bracket-Gearbox
31	3257-5	1	Key-Woodruff
32	106-4355	1	Gearbox ASM
33	32153-2	4	Nut-Lock
34	63-8410	4	Washer
35	63-9750	4	Mount
36	68-9890-01	1	Cover-Gearbox, Front
37	68-8530-01	1	Base-Gearbox
39	3211-8	1	Screw-HH
41	100-6178	1	Idler Arm ASM
41:1:2	27-8490	1	Bushing-Rubber
41:2	100-6578	1	Decal-Danger
42	3256-27	1	Washer-Flat
43	3296-33	1	Nut-Lock, NI
44	44-6300	1	Plate-Idler
45	5-1077	1	Key-Square



### Gear Box Assembly No. 106-4355

Ref	Part No.	Qty.	Description				
1	107-2932	1	Cap-Oil				
2	107-2933	1	Plug				
3	107-2934	2	Seal-Oil				
4	107-2935	1	Cap-Oil				
5	107-2936	1	Plug-Filler, Dipstick				



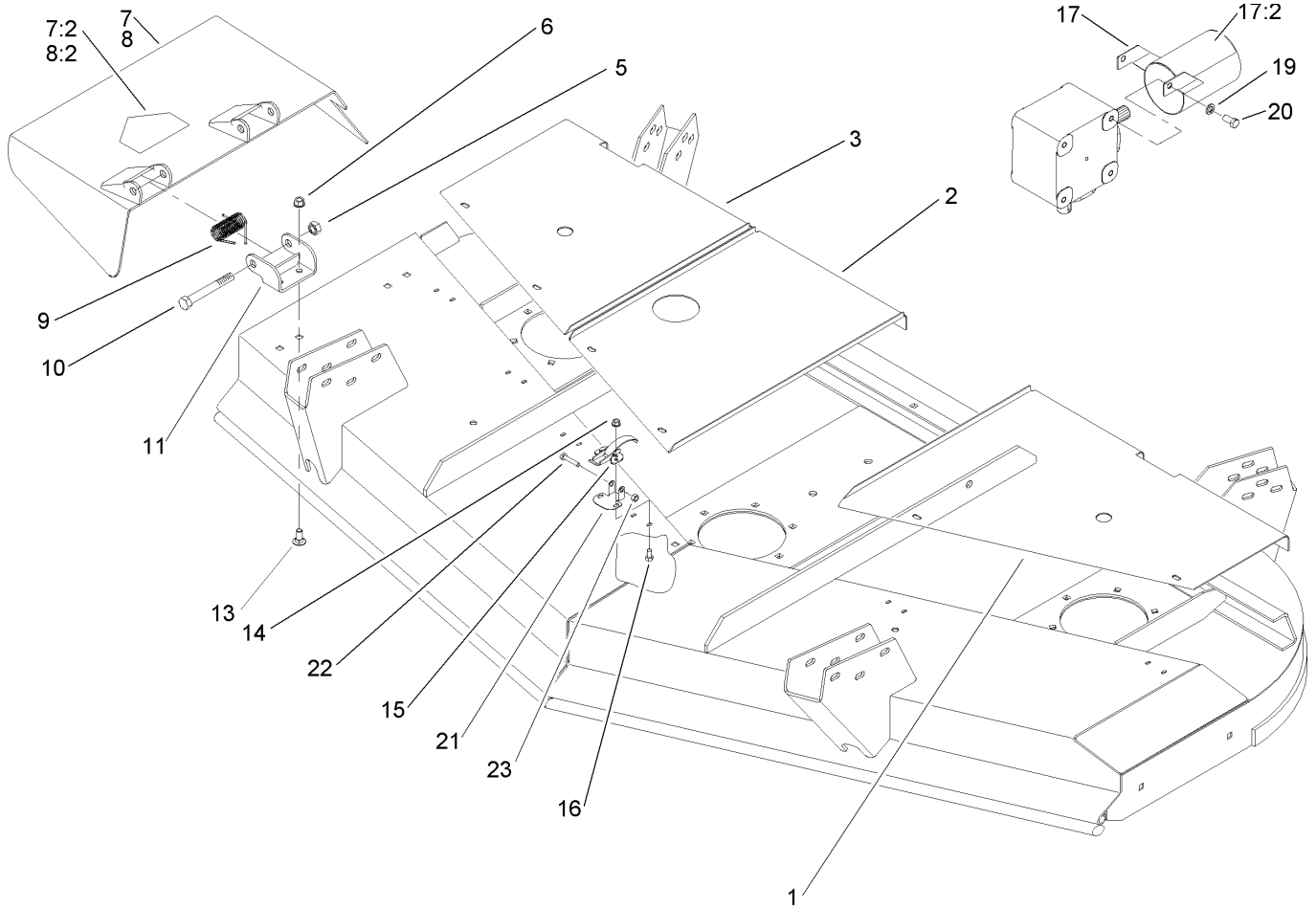
## Spindle and Blade Assembly

Ref	Part No.	Qty.	Description
1	57-0260	3	Spindle ASM
1:1	27-0920	1	Shaft
1:2	32146-20	1	Nut-Jam
1:3	7-4150	1	Washer
1:4	57-0560-03	1	Pulley & Hub ASM
1:5	61-4160	1	Housing-Spindle
1:6	253-139	2	Seal-Oil
1:7	27-0950	1	Spacer
1:8	46-8530	1	Bearing ASM
1:9	302-2	1	Fitting-Grease
2	3231-22	18	Screw-CARR
3	3256-24	2	Washer-Flat
4	32128-21	18	Nut-HF
5	94-1861-03	3	Blade
5	104-4569-03	3	Blade-Sail, High (Optional)
5	104-1304	3	Blade-Atomic (Optional)
6	72-9361	3	Cup-Scalp, Anti
7	92-5816	3	Bolt-Blade
99	95-3072	1	Blade And Belt Kit

--	--	--	--	--

3350-816

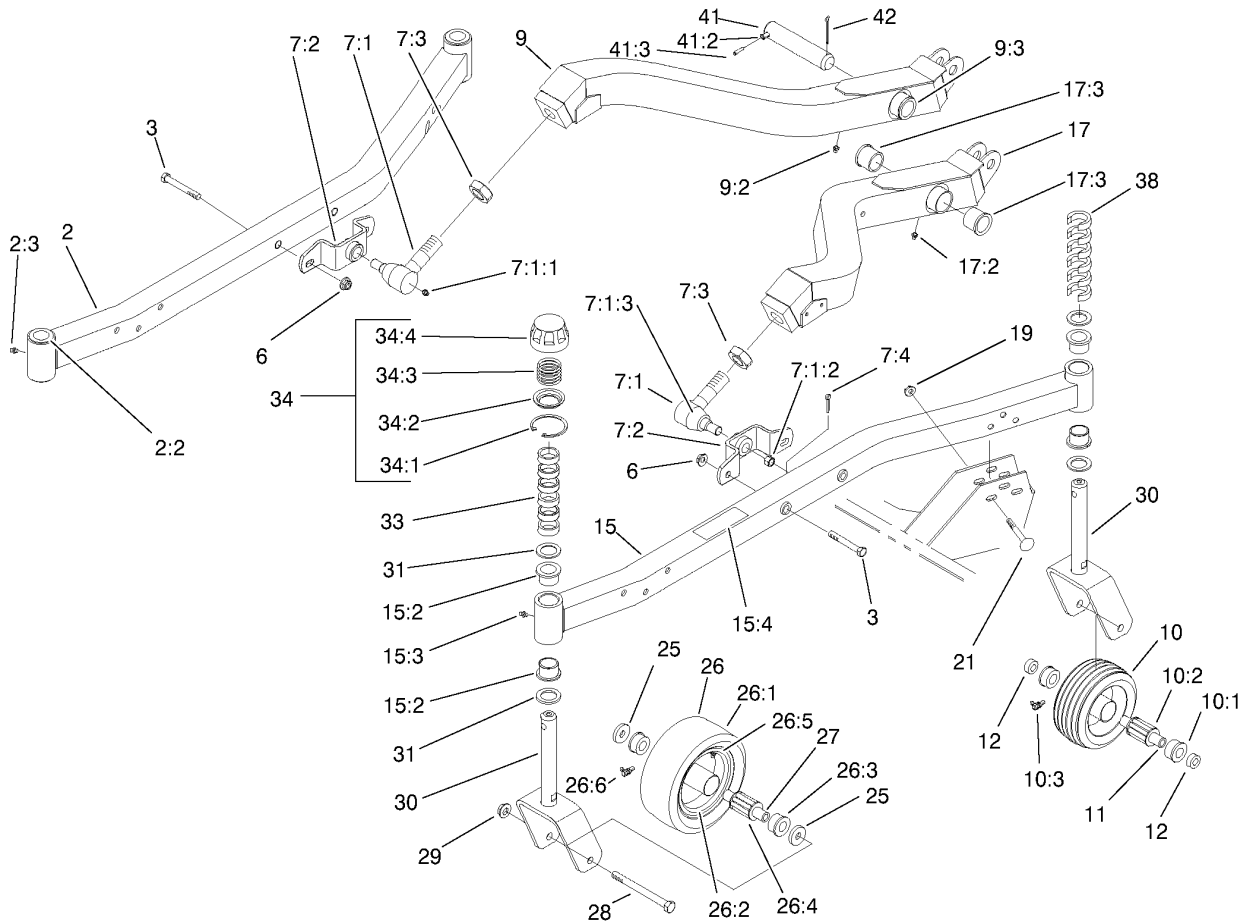
4



## Cover and Deflector Assembly

Ref	Part No.	Qty.	Description
1	98-7930-01	1	Cover-Belt, LH
2	57-0210-01	1	Cover-Center
3	98-7928-01	1	Cover-Belt, RH
5	32153-5	2	Nut-Lock
6	3290-357	4	Nut-HHF
7	14-0909	1	Deflector ASM
7:2	43-8480	1	Decal-Danger
8	100-6181	1	Deflector ASM (Ce)
8:2	106-6753	1	Decal-Danger, Ce
9	51-1550	2	Spring
10	325-17	2	Screw-HH
11	51-1530-01	2	Bracket-Hinge
13	3231-27	4	Screw-CARR
14	32128-17	12	Nut-Lock, Flange
15	249-21	6	Clamp-Slotted
16	3290-321	12	Screw-HWH
17	107-2904	1	PTO Guard ASM
17:2	107-2915	1	Decal-Danger
19	3253-21	2	Washer-Lock
20	323-2	2	Screw-HH
21	93-7043	3	Retainer-Latch
22	321-8	3	Screw-HH
23	3296-56	3	Nut-Lock, NI

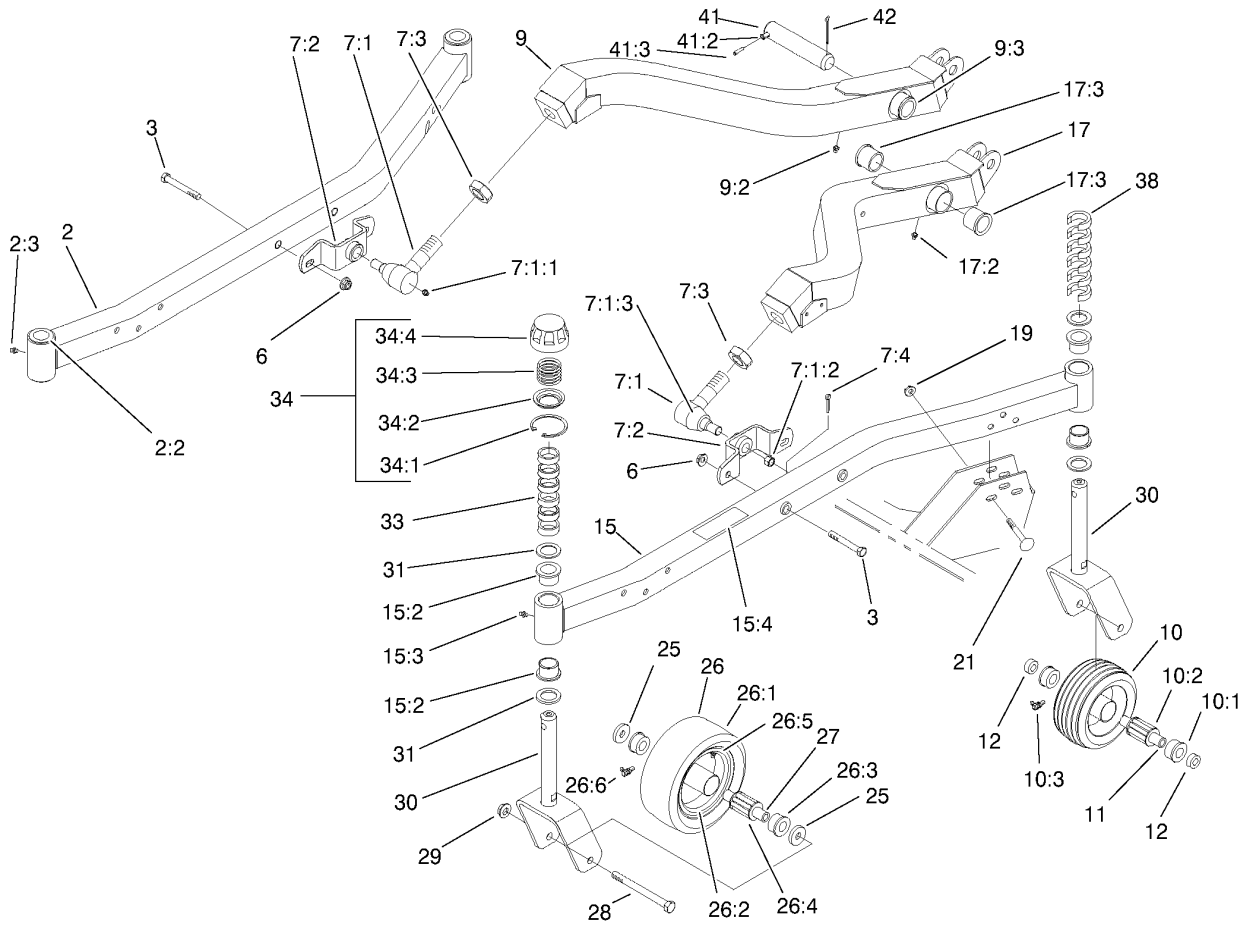
--	--	--	--



## Lift Arm and Castor Arm Assembly

Ref	Part No.	Qty.	Description
2	98-7934	1	RH Castor Arm ASM
2:2	94-1291	4	Bushing
2:3	302-5	2	Fitting-Grease
3	324-12	4	Screw-HH
6	32128-42	4	Nut-HF
7		2	Balljoint ASM
7:1	86-8100	1	Joint-Ball
7:1:1	302-5	1	Fitting-Grease
7:1:2	32136-2	1	Nut-SHH
7:1:3	105-7835	1	Seal
7:2	98-7944-01	1	Mount-Balljoint
7:3	21-3000	1	Nut-Hj, Push Arm
7:4	3272-12	1	Pin-Cotter
9	98-7900	1	Arm-Lift, RH
9:2	302-5	1	Fitting-Grease
9:3	256-268	2	Bushing
10	63-8400	2	Caster Wheel ASM
10:1	62-5580	2	Bearing-Outside
10:2	63-8580	1	Bearing-Roller
10:3	302-40	1	Fitting-Grease
11	63-1770	2	Spanner
12	99-1291	4	Spacer
15	98-7933	1	LH Castor Arm ASM
15:2	94-1291	4	Bushing

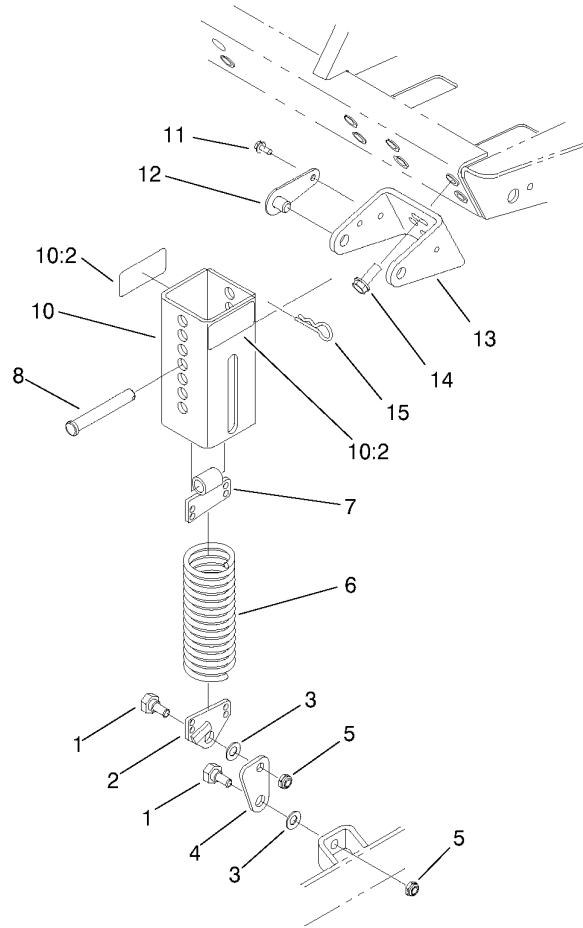
Ref	Part No.	Qty.	Description
15:3	302-5	2	Fitting-Grease
15:4	92-3035	1	Decal-HOC
17	98-7903	1	Arm-Lift, LH
17:2	302-5	1	Fitting-Grease
17:3	256-268	2	Bushing
19	32128-19	12	Nut-HF
21	3231-10	12	Screw-CARR
25	70-8040	4	Washer
26	99-1268	2	Castor Wheel ASM
26:1	93-9939	1	Tire
26:2	100-2348	1	Rim ASM
26:3	62-5580	2	Bearing-Outside
26:4	62-5570	1	Bearing-Roller
26:5	100-5832	1	Tube
26:6	302-11	1	Fitting-Lube, 45 DEG
27	68-8980	2	Spanner-Tire
28	325-19	4	Screw-HH
29	32128-23	4	Nut-HF
30	98-7921-01	4	Fork-Castor
31	3-6781	8	Washer-Thrust
33	63-0070	12	Spacer
34	92-8862	4	HOC Cap ASM
34:1	92-5581	1	Ring-Retaining
34:2	92-5583	1	Washer-Cap



### Lift Arm and Castor Arm Assembly (continued)

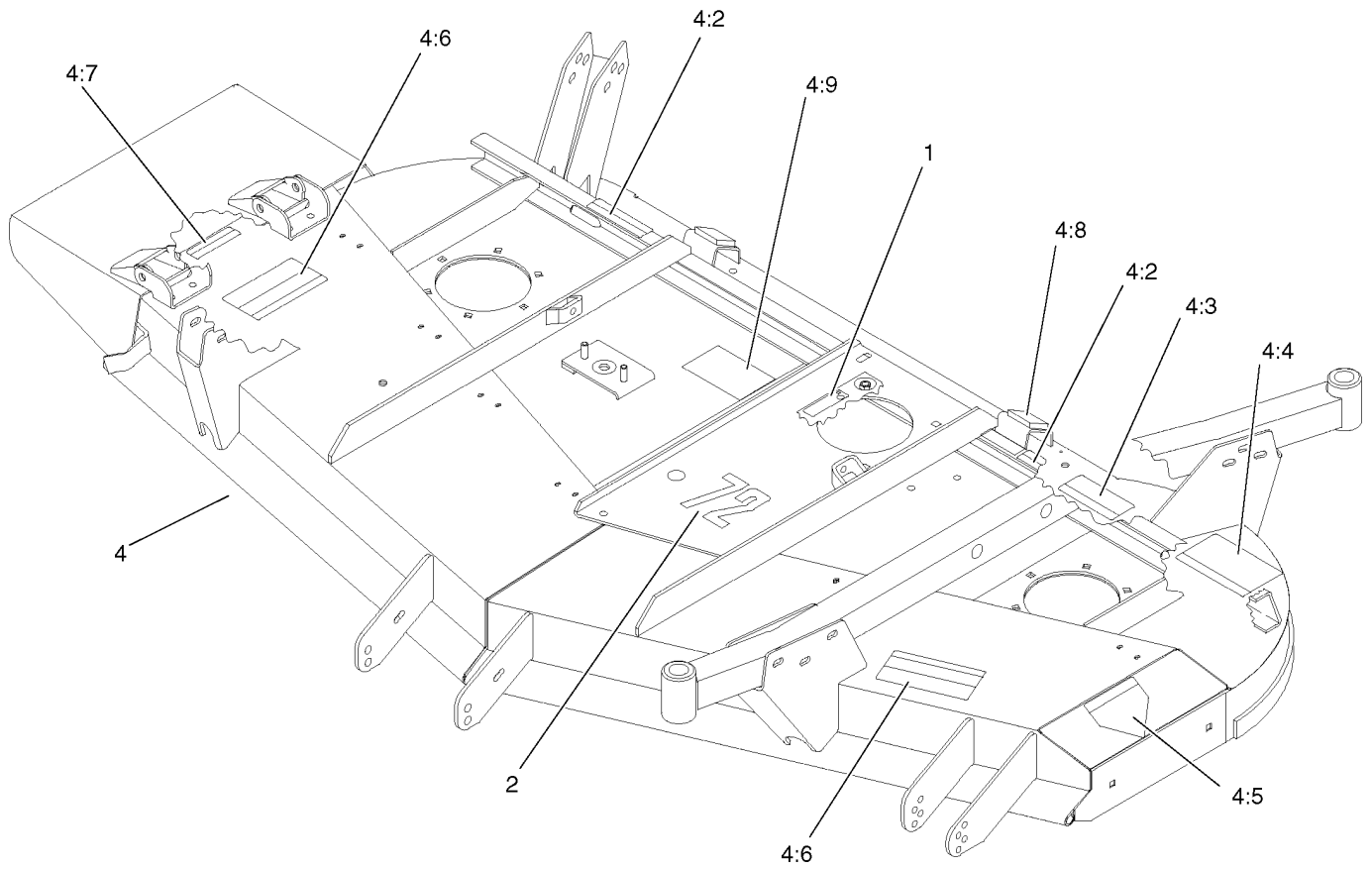
Ref	Part No.	Qty.	Description
34:3	92-5584	1	Spring-Compression
34:4	92-8861	1	Cap-HOC
38	99-1283	12	Spacer
41	98-2330	2	Pivot Pin ASM
41:2	32121-67	1	Pin-Roll
41:3	32121-61	1	Pin-Roll
42	3272-19	2	Pin-Cotter



## Counterbalance Assembly

Ref	Part No.	Qty.	Description	
1	46-3380	4	Bolt-Shoulder	
2	66-8420-03	2	End-Spring	
3	3256-24	4	Washer-Flat	
4	66-8440-01	2	Link-Knee	
5	3296-44	4	Nut-Lock, NI	
6	66-8390-03	2	Spring-Extension	
7	70-7940-03	2	End-Spring	
8	283-69	2	Pin-Clevis	
10	100-6179	2	Spring Cover ASM	
10:2	93-6696	2	Decal-Warning	
11	12-3270	4	Screw	
12	70-7920	4	Pin-Lock	
13	66-8230-01	2	Bracket-Support	
14	3234-11	4	Screw-HHF	
15	3290-355	2	Pin-Hair	



### Deck Assembly

Ref	Part No.	Qty.	Description
1	93-6697	1	Decal-Lube
2	57-0280	1	Decal-72
4	99-8406	1	Deck ASM
4:2	100-6578	2	Decal-Danger
4:3	93-7818	1	Decal-Torque, Blade Bolt
4:4	105-9554	1	Decal-Warning
4:5	106-6753	1	Decal-Danger, Ce
4:6	107-2908	2	Decal-Danger, Combination
4:7	107-2916	1	Decal-Warning
4:8	74-0340	2	Cushion-Rubber
4:9	99-5172	1	Decal-Routing, Belt

--	--	--	--

## NOTES

