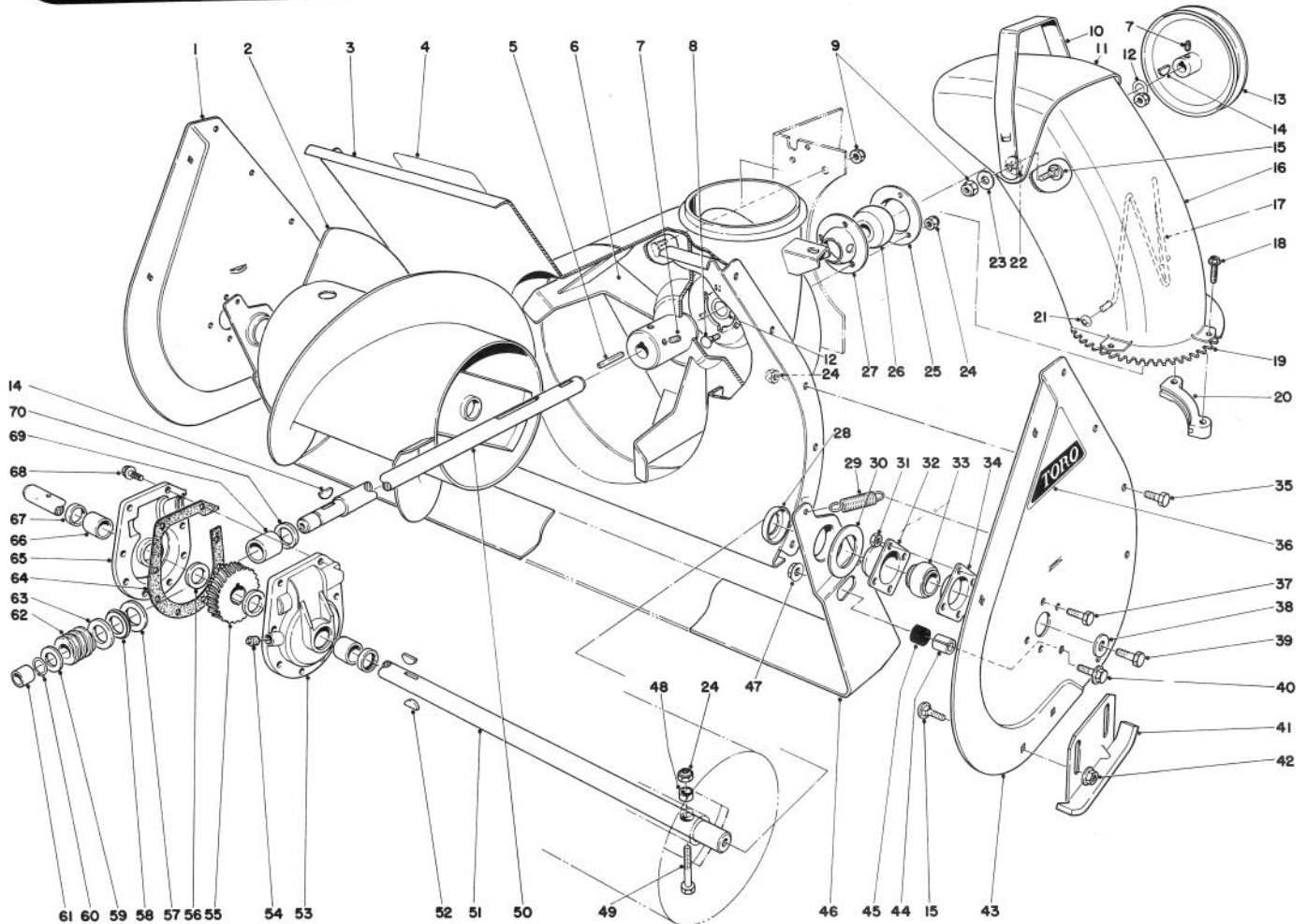




MODEL NO. 38040 — 500001 & UP
 MODEL NO. 38050 — 500001 & UP

**PARTS
 CATALOG**

524 AND 724 SNOWTHROWERS

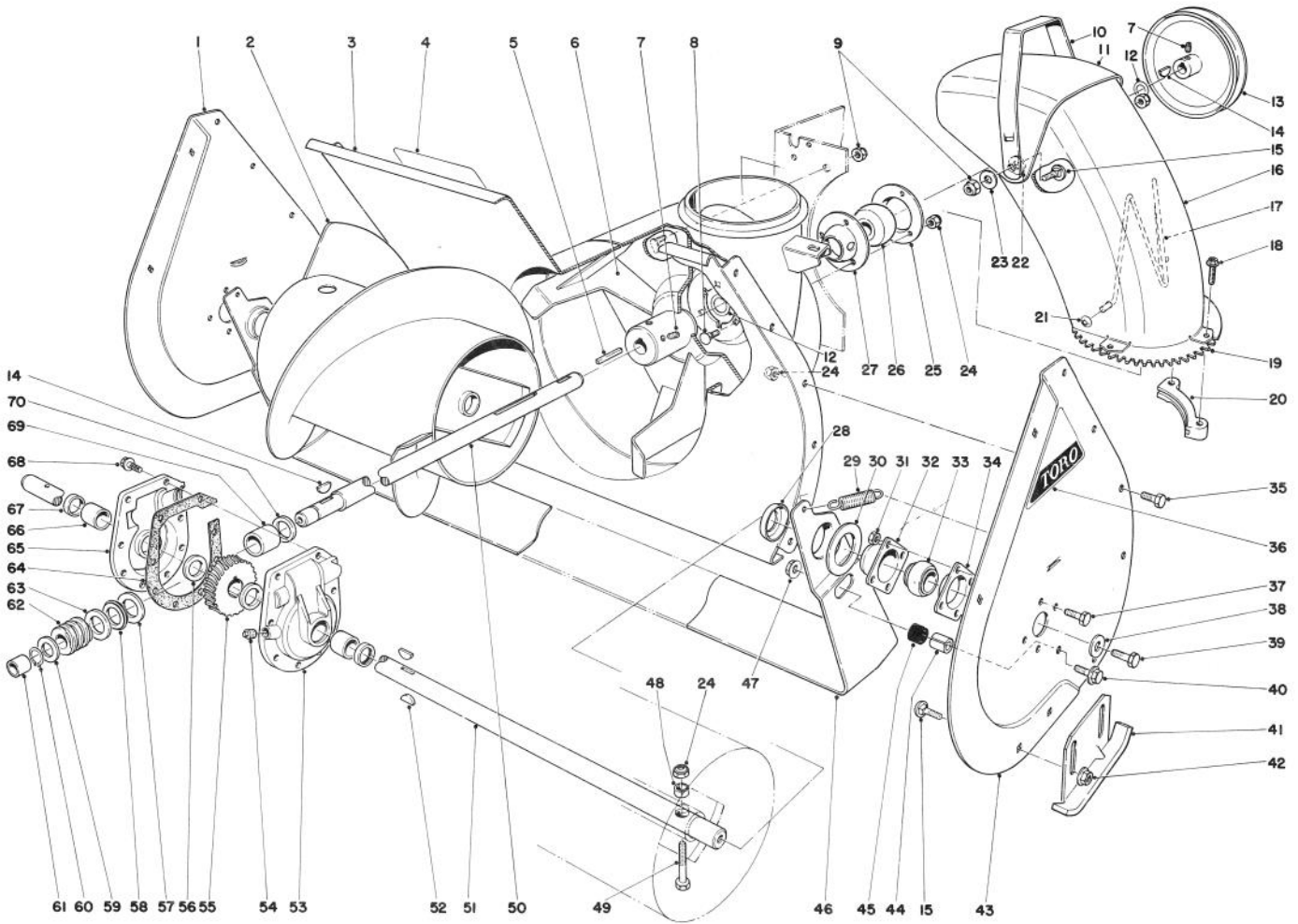


AUGER ASSEMBLY

Ref. No.	Part No.	Description	No. Used
1	43-7440	Sideplate Auger Right	1
2	26-6140	Auger Right	1
*	26-6150	Auger Left	1
3	40-8120	Auger Housing	1
4	29-6350	Decal — Auger Warning	1
5	6-8590	Key — Impeller	1
6	20-1260	Impeller	1
7	3242-4	Set Screw	4
8	3230-1	Carriage Bolt	3
9	32152-2	Locknut	6
10	20-1410	Handle Deflector	1
11	20-1400	Deflector Chute	1
12	3-0737	Thrust Washer	2

Ref. No.	Part No.	Description	No. Used
13	20-1310	Pulley Impeller	1
14	3257-23	Woodruff Key	2
15	3231-27	Carriage Bolt	6
16	20-1390	Chute	1
17	12-2040	Wire Chute	1
18	27-0210	Special Screw	4
19	43-7470	Swivel Gear Chute	1
20	40-8150	Retainer Chute	2
21	3290-326	Pushnuts	2
22	20-4320	Washer Rubber	2
23	3290-340	Washer Belleville	2
24	3296-29	Locknut	15
25	26-6120	Bearing Flange Rear	1

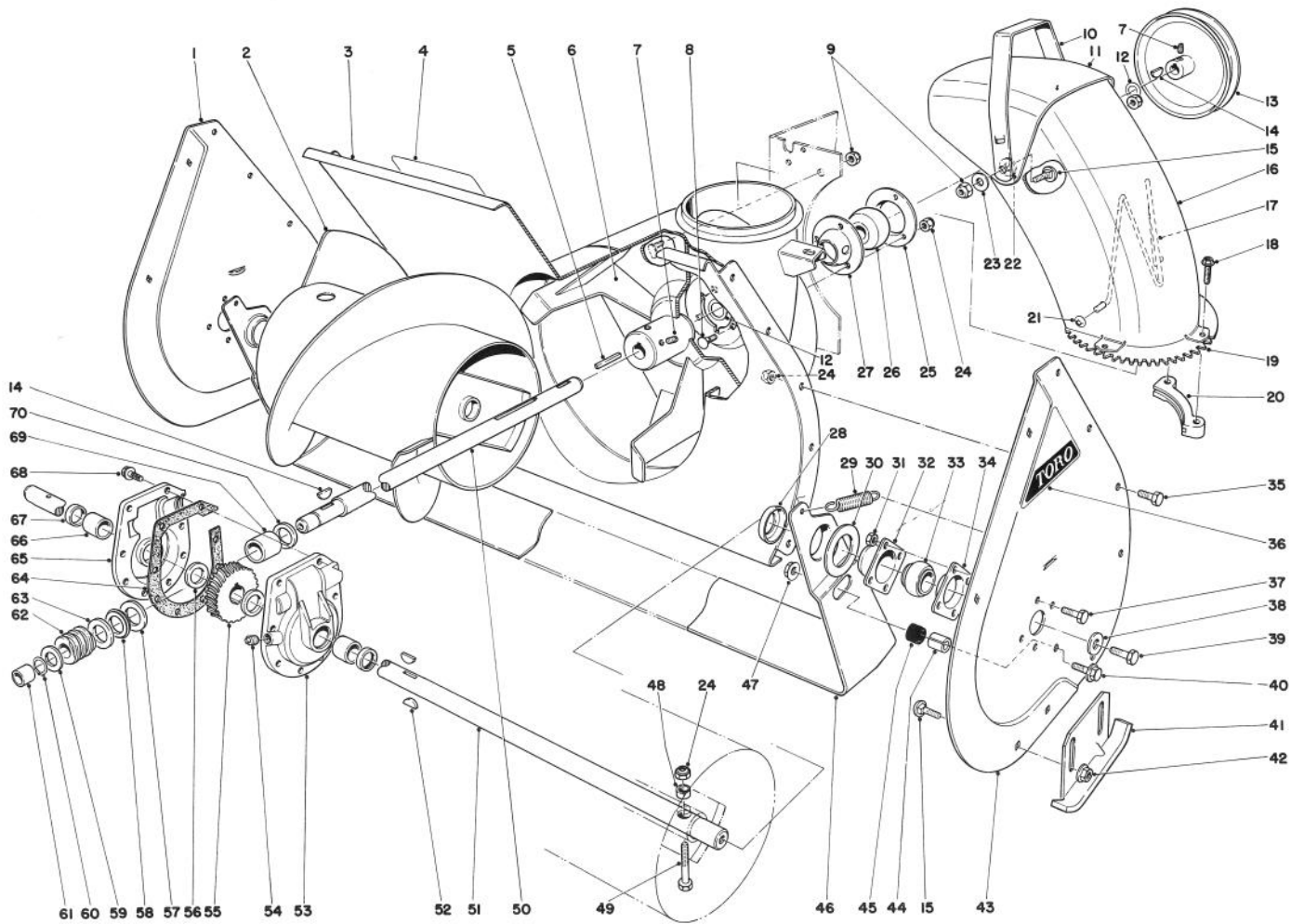
*Not Illustrated



AUGER ASSEMBLY (Continued)

Ref. No.	Part No.	Description	No. Used
26	26-6100	Bearing Impeller	1
27	26-6110	Bearing Flange Front	1
28	26-6400	Positioner – Scraper Blade	2
29	5-7290	Spring – Scraper Blade	2
30	20-0300	Spacer – Scraper Blade	2
31	32152-4	Locknut	8
32	20-0990	Bearing Flange Auger	2
33	20-0980	Bearing Auger	2
34	20-1000	Bearing Flange Auger	2
35	322-2	Capscrew	10
36	17-6500	Decal – Auger Side Plate	2
37	321-3	Capscrew	8
38	3-0750	Flat Washer	2
39	323-6	Capscrew	2
40	3234-11	Hex Flange Bolt	2
41	20-2840	Skid	2
42	3290-357	Flange Nut	4
43	43-7430	Sideplate Auger Left	1
44	25-5140	Standoff – Scraper Blade	2
45	25-5150	Bumper – Scraper Blade	2
46	20-1320	Scraper Blade	1

Ref. No.	Part No.	Description	No. Used
47	32128-21	Locknut	2
48	25-5090	Spacer Auger Hub	2
49	17-7030	Bolt Auger	2
50	36-2580	Shaft Impeller	1
51	20-1170	Shaft Auger	1
52	3257-33	Key Woodruff	2
53	37-8860	Gear Case (Incl. Ref. #66 & 67)	1
54	281-1	Pipe Plug	1
55	5-7180	Gear Worm	1
56	252-71	Thrust Bearing	2
57	252-78	Thrust Washer	1
58	252-76	Thrust Bearing	1
59	3-8664	Thrust Washer	1
60	32120-72	Retaining Ring	1
61	256-32	Bushing	1
62	5-7170	Worm	1
63	252-77	Thrust Washer	1
64	51-0460	Gasket	1
65	37-8850	Gear Case (Incl. Ref. #66 & 67)	1

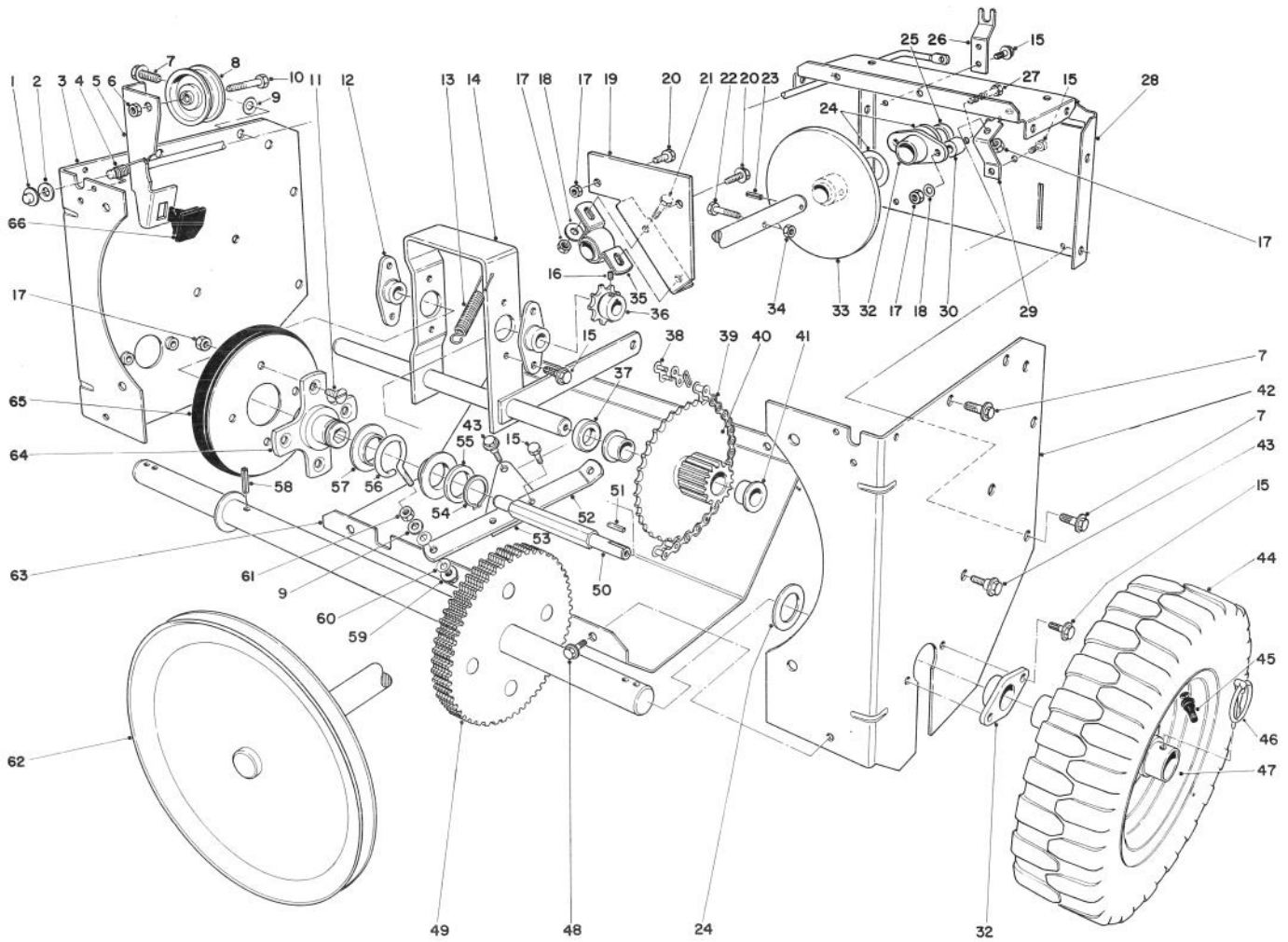


AUGER ASSEMBLY (Continued)

Ref. No.	Part No.	Description	No. Used
66	256-237	Bushing	2
67	7-0045	Oil Seal	2
68	32144-41	Thread Form Screw	8
69	20-3210	Bushing	1
70	237-87	Seal	1

Ref. No.	Part No.	Description	No. Used
*	19-7000	Gear Case Assembly Complete	1
*	20-0690	Drift Breaker Kit (Optional)	1
*	25-9150	Decal — Replacement Serial Plate	1

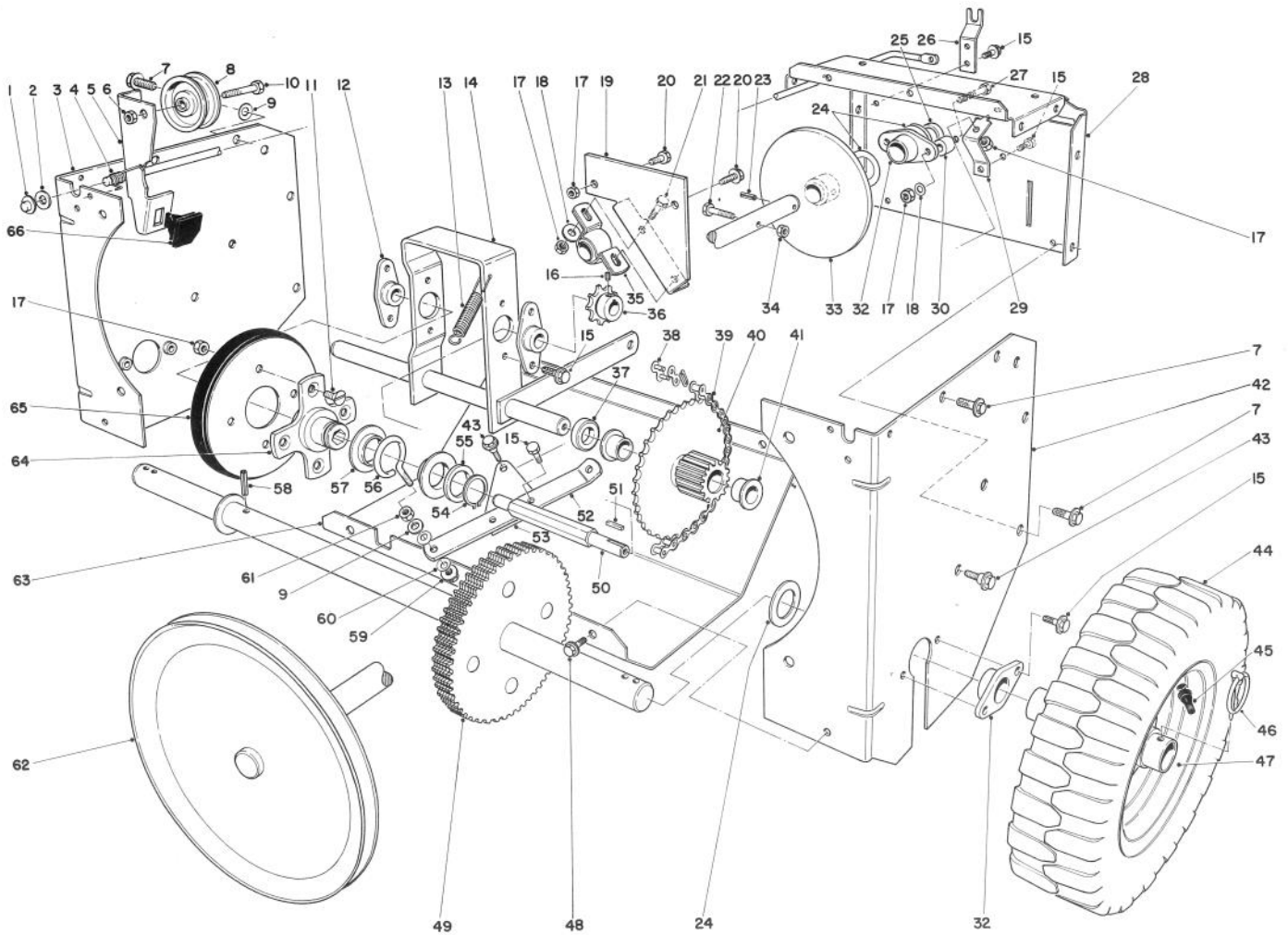
*Not Illustrated



TRACTION ASSEMBLY

Ref. No.	Part No.	Description	No. Used
1	3290-383	Pushnut	1
2	3256-25	Flat Washer	1
3	20-1420	Side Plate Traction	1
4	20-1160	Torsion Spring Clutch	1
5	8-9019	Clutch Rod (Incl. Ref. #66)	1
6	3296-39	Locknut	1
7	32144-15	Hex Hd. Thread Forming Screw	8
8	3-4244	Idler Pulley	1
9	3256-45	Flat Washer	2
10	323-29	Capscrew	1
11	32108-94	Screw Flat Head	4
12	20-1620	Bearing Friction Wheel	2
13	11-4640	Spring - Clutch Control	1
14	20-1580	Pivot Shaft	1
15	32144-11	Screw Thread Forming	13
16	3245-32	Set Screw	2
17	3296-29	Locknut	11
18	3256-23	Washer	4
19	36-9990	Bracket - Shaft Support	1
20	322-2	Capscrew	2
21	322-3	Capscrew	2
22	321-33	Capscrew	1

Ref. No.	Part No.	Description	No. Used
23	32121-6	Roll Pin	1
24	3-0737	Thrust Washer	5
25	26-6370	Spacer Drive Shaft	1
26	20-1080	Support Clutch Rod	1
27	322-8	Capscrew	2
28	26-6360	Frame Center	1
29	20-1760	Pivot Bracket	1
30	26-6380	Standoff Drive Shaft	2
32	20-1730	Bearing Axle	3
33	20-1550	Friction Plate	1
34	32152-4	Locknut	1
35	36-9980	Bearing - Pillow Block	1
36	5-9820	Sprocket	1
37	3-7384	Spacer	1
38	2710-6	Connecting Link	1
39	20-1810	Chain	1
40	20-1640	Gear & Bushing (Incl. Ref. #41)	1
41	3-1506	Bushing - Flanged	2
42	20-1430	Side Plate Traction	1
43	11-8140	Shoulder Screw	3
44	231-80	Tire	2
45	232-27	Valve Stem	2

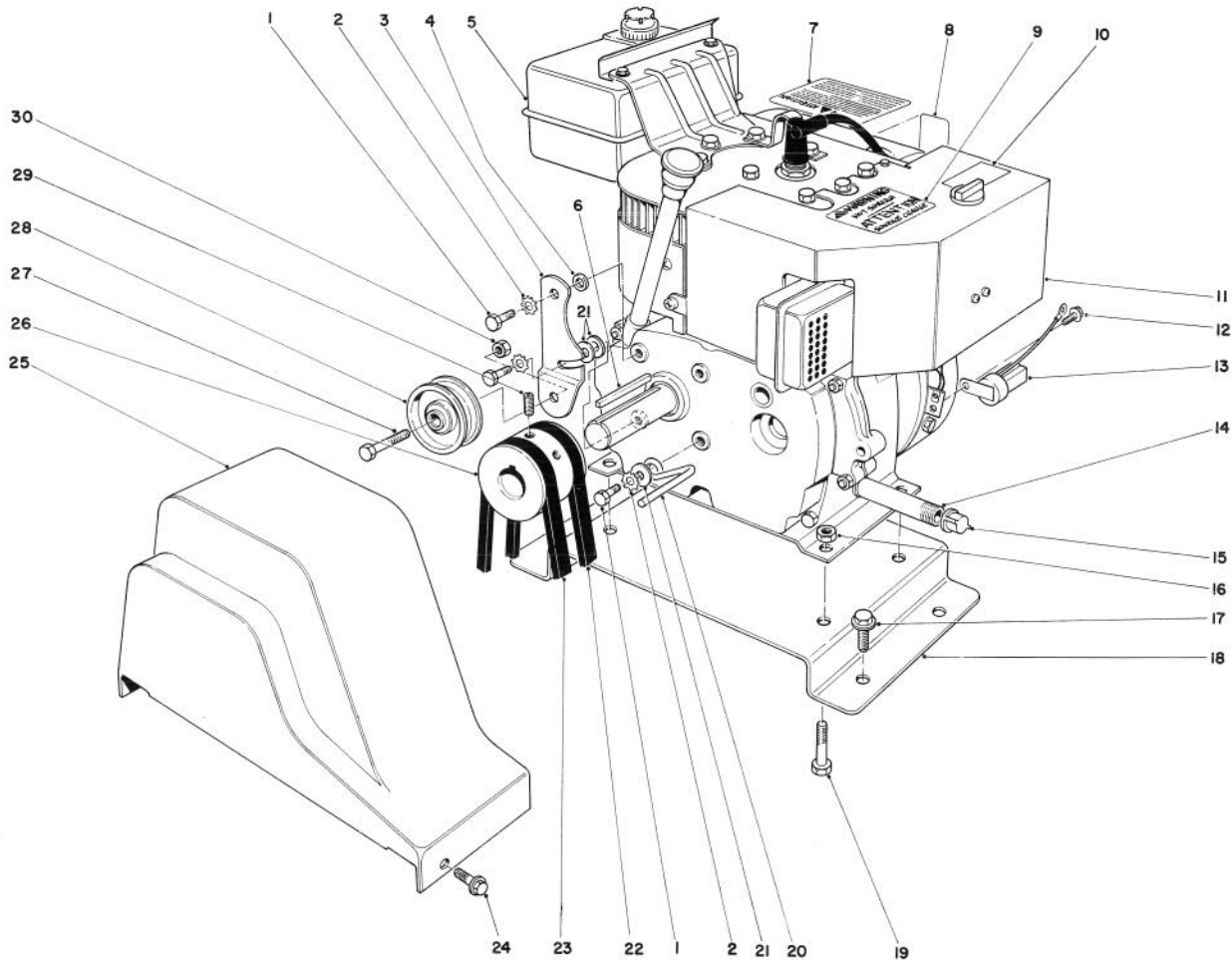


TRACTION ASSEMBLY (Continued)

Ref. No.	Part No.	Description	No. Used
46	3290-243	Klik Pin	2
47	20-1750	Wheel	2
48	32144-10	Screw Thread Forming	4
49	20-1680	Axle & Gear	1
50	20-1630	Shaft Friction Wheel	1
51	3-6168	Square Key	1
52	20-1780	Linkage Shift	1
53	20-1770	Pivot Plate	1
54	32151-36	Snap Ring	1
55	252-71	Thrust Bearing	1
56	11-8050	Slider Ring Collar	1
57	11-8080	Ring - Slider	2
58	32121-9	Roll Pin	1
59	32128-12	Flange Nut	1

Ref. No.	Part No.	Description	No. Used
60	3290-212	Spring Washer	2
61	3296-6	Nut	1
62	22-7930	Drive Shaft	1
63	20-1840	Lower Shield	1
64	20-3310	Hub - Traction Disc	1
65	40-8170	Friction Wheel	1
66	40-8140	Brake Pad - Molded	1
*†	20-9800	Tire Chain Kit	1
*†	232-36	Tube	2
*	8-8359	Loose Parts (Model 38040)	1
*	11-5679	Loose Parts (Model 38050)	1

†Optional Equipment
*Not Illustrated

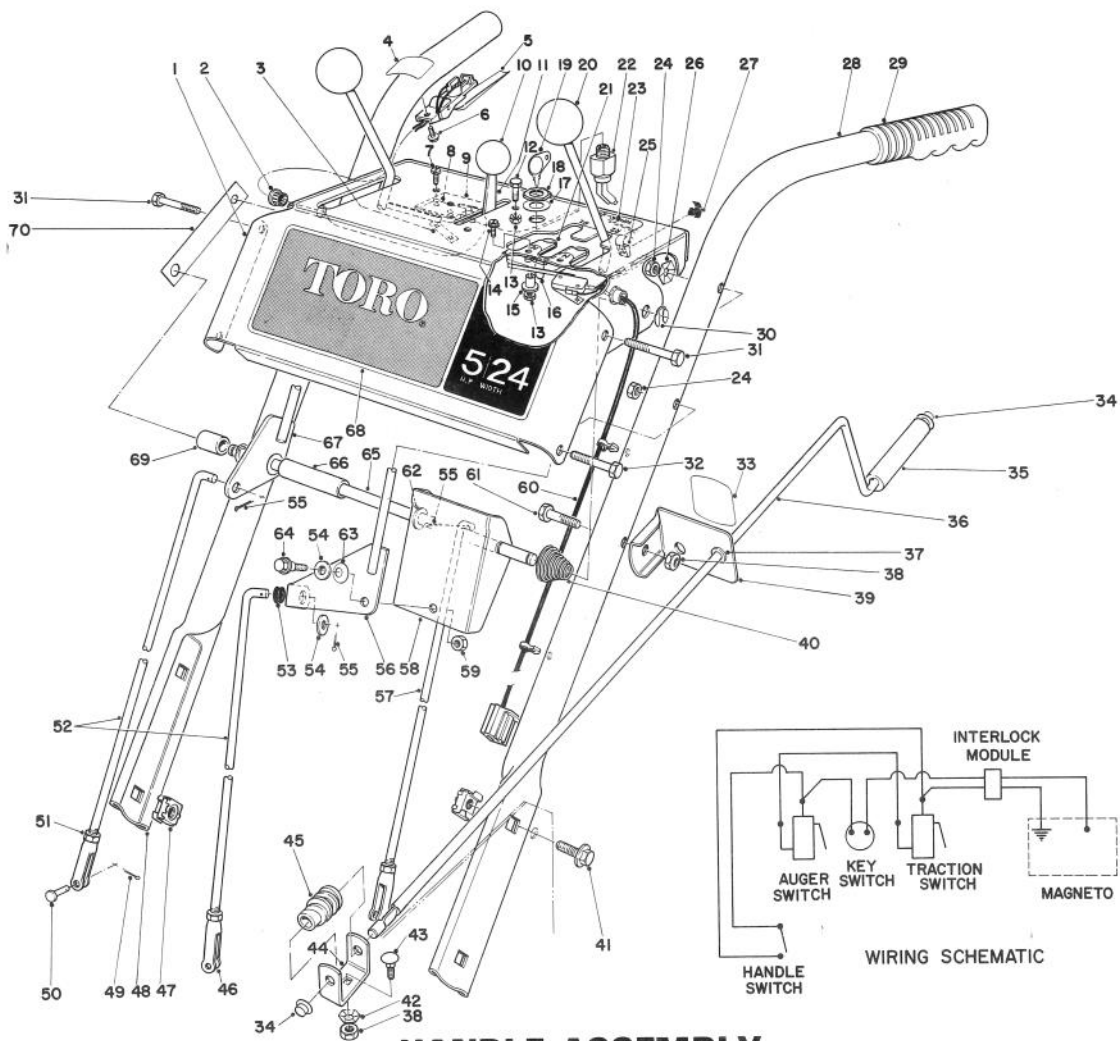


ENGINE ASSEMBLY

Ref. No.	Part No.	Description	No. Used
1	3210-3	Capscrew	3
2	3255-8	Lockwasher	3
3	20-1800	Idler Arm	1
4	40-8490	Spacer	1
5	52-2690	Gas Tank w/Cap (724 Snowthrower)	1
	52-2680	Gas Tank w/Cap (524 Snowthrower)	1
6	5-0930	Key	1
7	41-8540	Decal – Hazards Caution	1
8	39-3860	Decal – Primer	1
9	29-6390	Decal – Hot Surface Warning	1
10	39-3840	Decal – Choke	1
11	221-703	Engine (Model 38040)	1
*	221-704	Engine (Model 38050)	1
12	12-3270	Screw – Thread Forming	1
13	41-8600	Interlock Module	1

Ref. No.	Part No.	Description	No. Used
14	289-34	Pipe Nipple	1
15	288-2	Pipe Cap	1
16	3296-29	Locknut	4
17	32144-15	Hex Form Screw	4
18	25-5990	Plate – Engine Mounting	1
19	322-2	Capscrew	4
20	17-5530	Belt Retainer	1
21	3256-23	Washer	3
22	20-1820	V-Belt Traction	1
23	26-9670	V-Belt Auger	1
24	32144-10	Screw Thread Forming	2
25	20-1830	Belt Guard	1
26	21-4100	Pulley	1
27	323-29	Capscrew	1
28	3-4244	Idler Pulley	1
29	3246-14	Set Screw	2
30	3296-39	Locknut	1

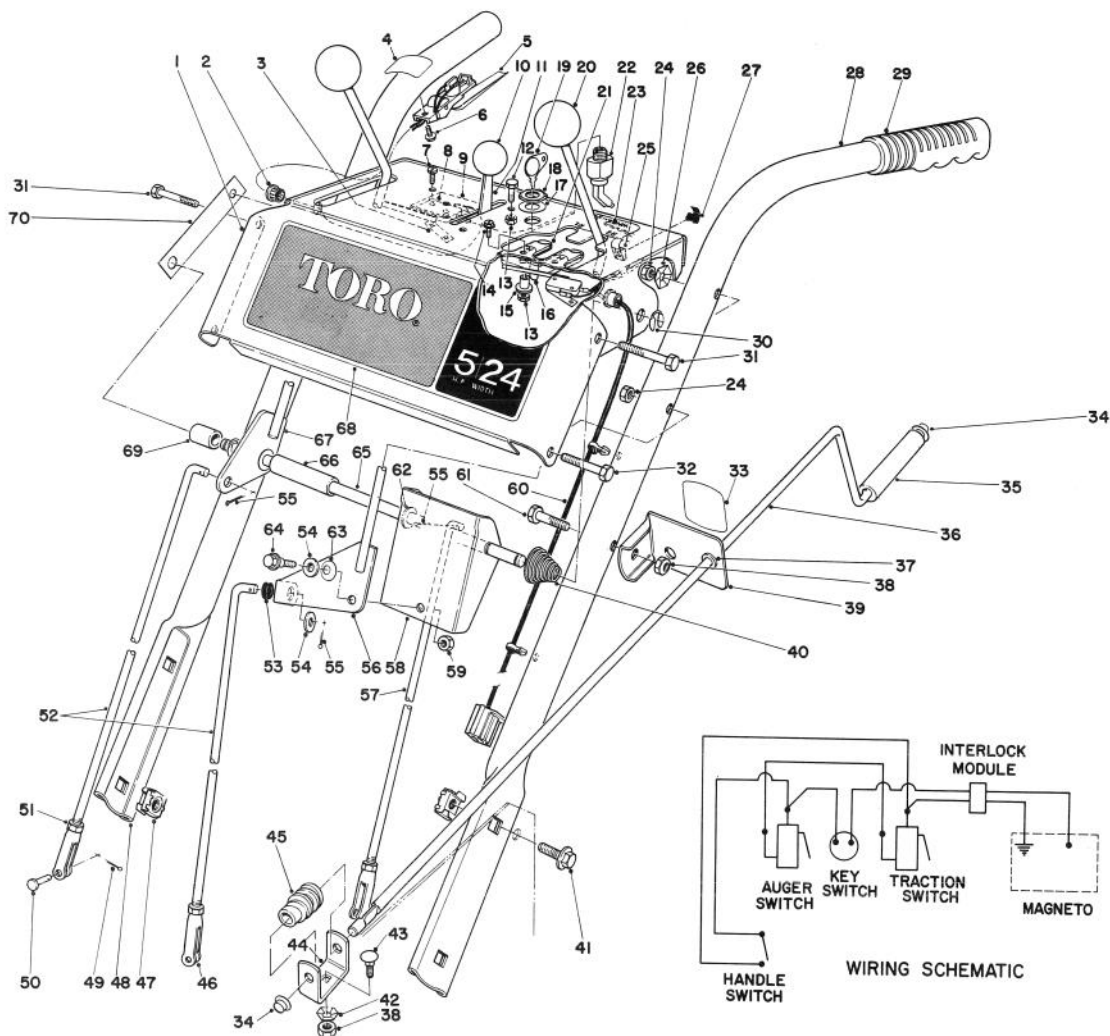
*Not Illustrated



HANDLE ASSEMBLY

Ref. No.	Part No.	Description	No. Used
1	40-8470	Escutcheon Plate	1
2	237-130	Snap Bushing	1
3	3290-354	Clip	2
4	29-6360	Decal – Safety Interlock	1
5	40-9690	Interlock Handle & Switch	1
6	12-3270	Screw – Self Tapping	1
7	3290-313	Pan Head Machine Screw	4
8	40-8200	Micro Switch	2
9	22-7950	Switch Mounting Pad	1
10	233-36	Knob	1
11	40-8480	Throttle Control	1
12	32140-99	Hex Head Screw	2
13	3296-2	Locknut	4
14	3251-4	Machine Screw	2
15	22-9740	Spacer Interlock	2
16	22-9730	Spring Interlock	1
17	3254-5	Lockwasher	1
18	218-461	Hex Nut	1
19	33-2010	Key	2
20	233-21	Knob	2
21	22-9750	Slide Interlock	1
22	40-8240	On-Off Switch	1
23	29-6340	Decal – Instruction	1

Ref. No.	Part No.	Description	No. Used
24	32152-4	Locknut	4
25	43-7450	Wire Clamp	5
26	3290-257	Washer – Pyramidal	2
27	43-7460	Stud – Mounting	5
28	25-6040	Handle – Left	1
29	6-0450	Handle Grip	2
30	32151-43	Klip Ring	2
31	321-11	Capscrew	3
32	321-9	Capscrew	1
33	29-6370	Decal – Chute Direction	1
34	3290-320	Push-On Speed Nut	2
35	40-8230	Chute Control Grip	1
36	40-8380	Rod – Chute Control	1
37	256-249	Nyliner	1
38	3296-29	Locknut	2
39	6-3069	Chute Control Rod Mounting (Incl. Ref. #33 & 37)	1
40	17-5630	Spring – Conical	1
41	3234-1	Hex Flange Screw	4
42	3290-238	Washer Pyramidal	1
43	3230-2	Carriage Bolt	1
44	40-8280	Worm Bracket	1
45	40-8250	Worm – Chute	1

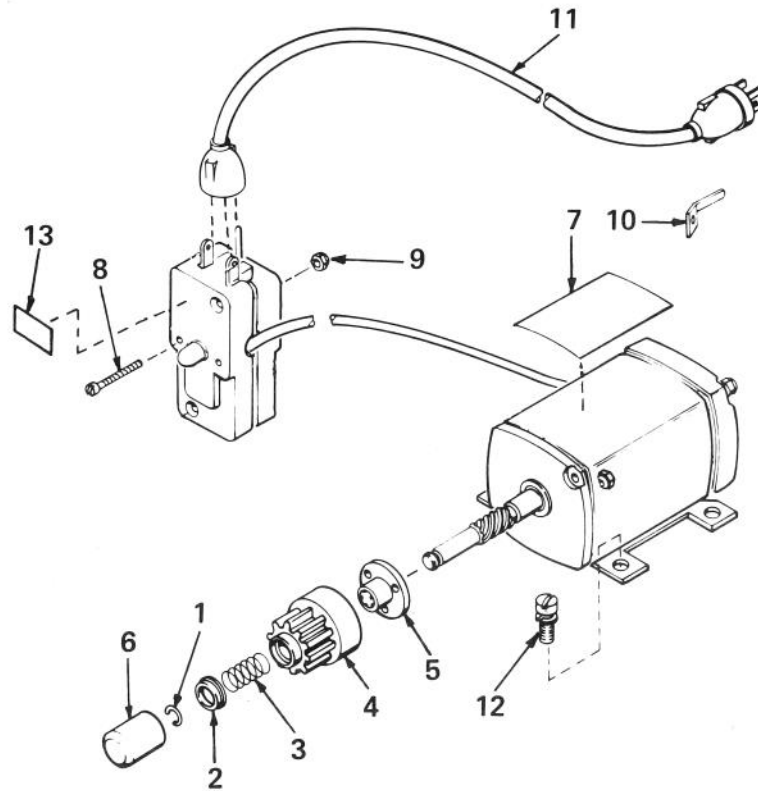


HANDLE ASSEMBLY (Continued)

Ref. No.	Part No.	Description	No. Used
46	40-8180	Clevis	3
47	3290-398	Retainer Nut	4
48	40-8430	Handle – Right	1
49	3272-5	Cotter Pin	3
50	283-1	Clevis Pin	3
51	3220-3	Jam Nut	3
52	20-1980	Control Rod – Speed Select	2
53	237-89	Rubber – Grommet	1
54	3256-24	Washer	2
55	3272-6	Cotter Pin	3
56	20-2020	Shift Lever	1
57	20-1970	Control Rod – Traction	1
58	20-2010	Bracket – Shift	1
59	32152-1	Locknut	1

Ref. No.	Part No.	Description	No. Used
60	40-8630	Wire Harness – Interlock	1
61	322-9	Capscrew	1
62	3256-25	Washer	2
63	3290-213	Spring Washer	1
64	11-8140	Shoulder Screw	1
65	20-1910	Pivot Rod	1
66	28-5660	Spacer – Shift Lever	1
67	20-1920	Lever	1
68	22-9720	Decal – Escutcheon (Model 38040)	1
*	22-9760	Decal – Escutcheon (Model 38050)	1
69	28-5670	Spacer – Auger Lever	1
70	25-9760	Strap – Escutcheon Support	1

*Not Illustrated

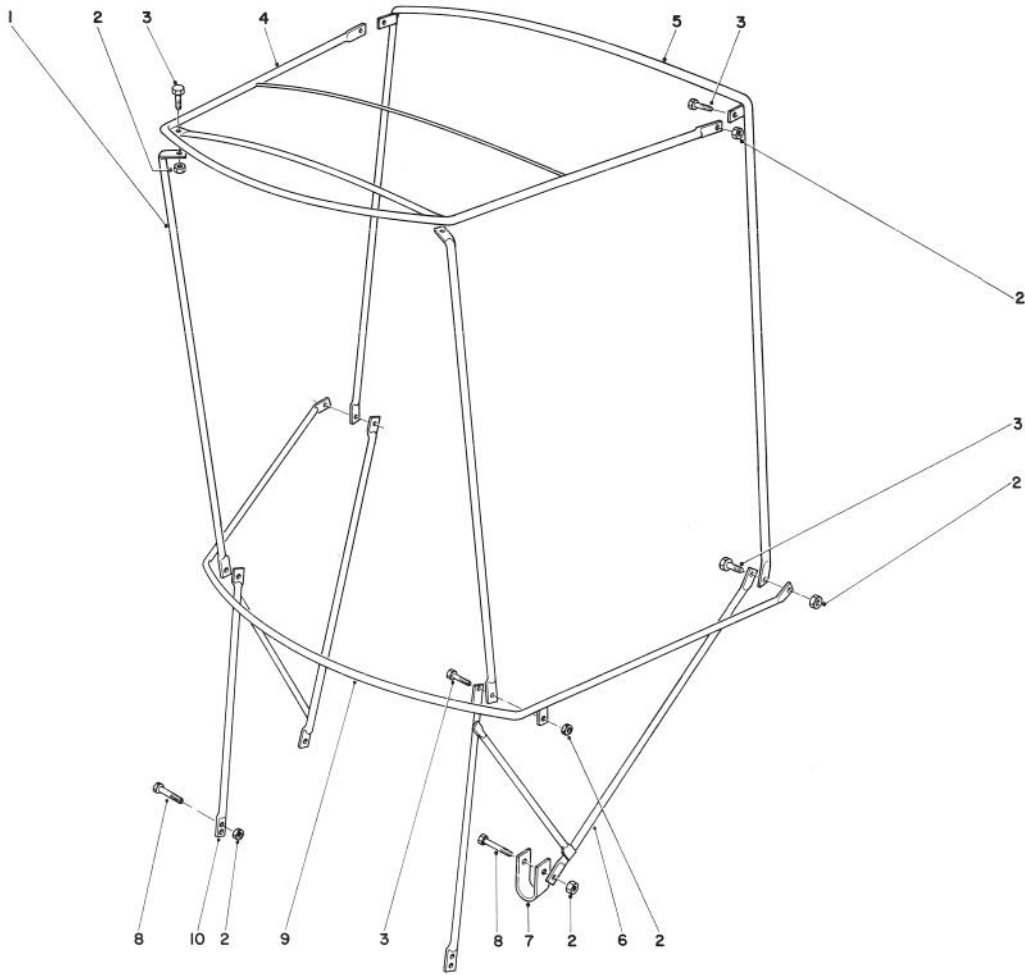


STARTER MOTOR KIT-MODEL 38-7590 (Optional)

Ref. No.	Part No.	Description	No. Used
1†	33842	Ring, Retainer	1
2†	33430	Retainer, Spring	1
3†	33431	Spring, Anti-drift	1
4†	33432	Gear	1
5†	33433	Nut, Engaging	1
6†	33451	Cover, Dust	1
7†	34179	Decal	1

Ref. No.	Part No.	Description	No. Used
8†	650741	Screw, Pan Hd.	1
9†	650742	Nut & Lockwasher	1
10†	32704	Clip	1
11†	32450A	Cord, Extension (10'6")	1
12†	30063	Screw, Fil. Hd. Sems	1
13†	34161	Decal - Instruction	1

†Note: Obtain individual replacement parts from your local Tecumseh Dealer.

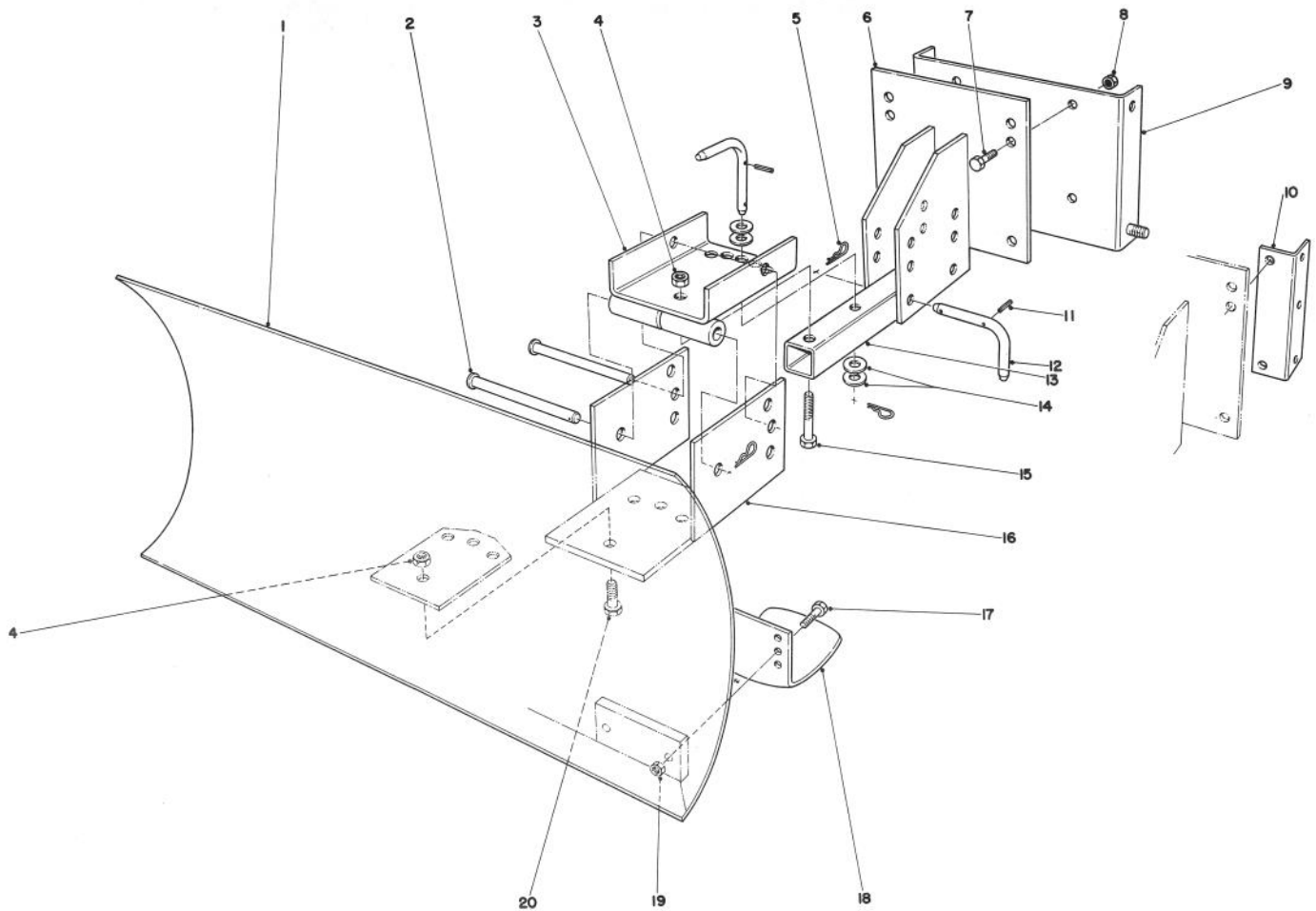


SNOW CAB ASSEMBLY MODEL 42-3380 (Optional)

Ref. No.	Part No.	Description	No. Used
1	12-8040	Front Corner Post	2
2	3296-42	Locknut	12
3	321-4	Capscrew	8
4	12-8010	Top Frame	1
5	12-8030	Rear Vertical Bow	1
6	42-4060	Attaching Bracket L.H.	1

Ref. No.	Part No.	Description	No. Used
7	12-8050	"U" Clamp	2
8	321-11	Capscrew	4
9	12-8020	Horizontal Curved Bow	1
10	42-4050	Attaching Bracket R.H.	1
*	42-4070	Vinyl Cover	1

*Not Illustrated



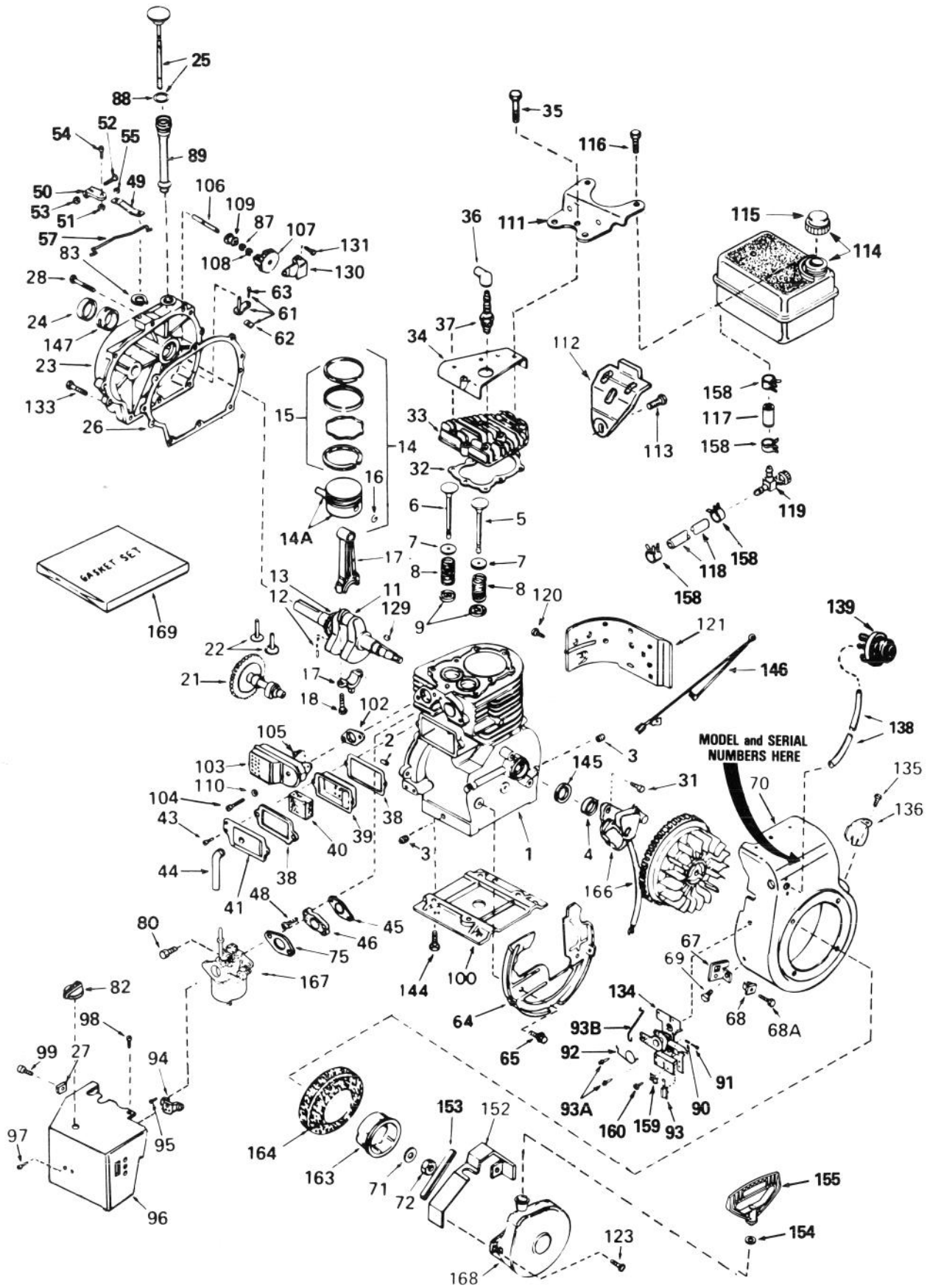
GRADER BLADE ASSEMBLY MODEL 59099 (Optional)

Ref. No.	Part No.	Description	No. Used
1	7-4374	Blade	1
2	283-38	Clevis Pin	2
3	20-5090	Swivel Bracket	1
4	32152-3	Locknut	5
5	3290-322	Hairpin Cotter	5
6	20-5170	Mounting Plate	1
7	323-6	Capscrew	4
8	32152-2	Locknut	4
9	22-4920	Mounting Plate (Used with 826 & 1132 Units only)	1
10	39-7850	Mounting Rail (Used with 3521, 421 & 521 Units only)	2

Ref. No.	Part No.	Description	No. Used
11	32121-45	Roll Pin	3
12	20-5210	Pivot Pin (Incl. Ref. #11)	3
13	20-5140	Tongue Blade	1
14	3256-5	Flat Washer	4
15	325-11	Capscrew	1
16	20-5130	Blade Adjustment Plate	1
17	322-6	Capscrew	4
18	7-1023	Skid	2
19	32152-1	Locknut	4
20	325-5	Capscrew	4
*	20-9950	Air Cleaner Kit - (Tecumseh)	1

*Not Illustrated

ENGINE, TECUMSEH MODEL NO. H50-65498R (5 H.P. SNOWTHROWER MODEL NO. 38040)



ENGINE, TECUMSEH MODEL NO. H50-65498R (5 H.P. SNOWTHROWER MODEL NO. 38040)

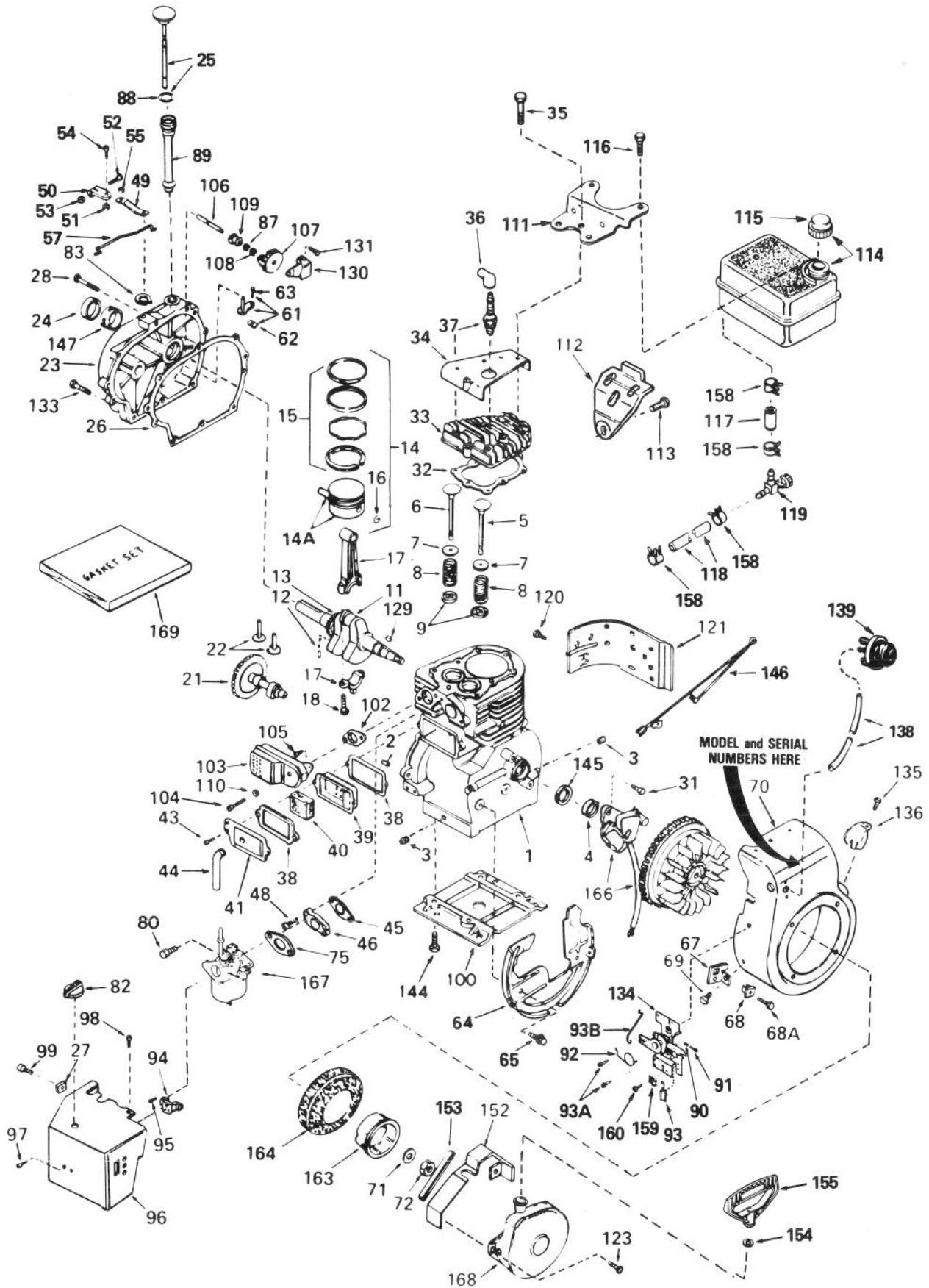
Ref. No.	Part No.	Description	No. Used
1	34919	Cylinder Assy. (Incl. Ref. #2, 3 & 4)	1
2	27652	Pin, Dowel	2
3	27642	Plug, Sq. Hd. Pipe	2
4	32630	Seal, Oil	1
5	32783	Valve, Intake (Std.) (Incl. Ref. #9)	1
5	32784	Valve, Intake (1/32" oversize) (Incl. Ref. #9)	1
6	27878A	Valve, Exhaust (Std.) (Incl. Ref. #9)	1
6	27880A	Valve, Exhaust (1/32" oversize) (Incl. Ref. #9)	1
7	27882	Cap, Upper Valve Spring	2
8	27881	Spring, Valve	2
9	32581	Cap, Lower Valve Spring	2
11	34987	Crankshaft Assy. (Incl. Ref. #12 & 13)	1
12	29783	Pin, Crankshaft Gear	1
13	27884	Gear, Crankshaft	1
14	34531	Piston, Pin & Ring Assy. (Std.) (Incl. Ref. #14A, 15 & 16)	1
14	34532	Piston, Pin & Ring Assy. (.010 oversize) (Incl. Ref. #14A, 15 & 16)	1
14	34533	Piston, Pin & Ring Assy. (.020 oversize) (Incl. Ref. #14A, 15 & 16)	1
14A	33312B	Piston & Pin Assy. (Std.) (Incl. Ref. #16)	1
14A	33313B	Piston & Pin Assy. (.010 oversize) (Incl. Ref. #16)	1
14A	33314B	Piston & Pin Assy. (.020 oversize) (Incl. Ref. #16)	1
15	34854	Ring Set, Piston (Std.)	1
15	34855	Ring Set, Piston (.010 oversize)	1
15	34856	Ring Set, Piston (.020 oversize)	1
16	27888	Ring, Piston Pin Retaining	2
17	31295C	Rod Assy., Connecting (Incl. Ref. #18)	1
18	650662B	Bolt, Connecting Rod	2
21	33156	Camshaft (Compression Release)	1
22	34034	Lifter, Valve	2
23	31303B	Cover, Cylinder (Incl. Ref. #24, 106 & 147)	1
24	28427	Seal, Oil	1
25	34011A	Dipstick, Oil (Incl. Ref. #88)	1
26	*30684	Gasket, Cylinder Cover	1
27	650764	Nut, "U" Type	1
28	650488	Screw, Hex Hd.	7

Ref. No.	Part No.	Description	No. Used
31	650489	Screw, Hex Hd.	2
32	*28938B	Gasket, Cylinder Head	1
33	30938A	Head, Cylinder (Incl. 3 of No. 35)	1
34	30939A	Cover, Cylinder Head	1
35	650697A	Screw, Hex Flange Hd.	8
36	610118	Cover, Spark Plug	1
37	33636	Plug, Spark (Champion J-8 or equivalent) <u>Except for Canada</u>	1
37	34251 Canada	Resistor Spark Plug (Canadian regulations require RJ-17LM resistor spark plug)	1
38	*27896	Gasket, Valve Spring Cover	2
39	28423	Body Assy., Breather	1
40	28424	Element, Breather	1
41	28425	Cover, Valve Spring	1
43	650128	Screw, Fil. Hd.	2
44	27627	Tube, Breather	1
45	*27915	Gasket, Intake	1
46	34712	Flange, Carburetor (Incl. Ref. #80)	1
48	30196	Screw, Fil. Hd.	2
49	33454	Lever, Governor	1
50	29916	Clamp, Governor Lever	1
51	30322	Locknut, Hex "Keps"	1
52	29826	Screw, Hex Washer Hd.	1
53	29216	Locknut, Hex "Keps"	1
54	650548	Screw, Hex Washer Hd.	1
55	29918	Lockwasher	1
57	34661	Link, Governor	1
61	30699C	Rod Assy., Governor (Incl. Ref. #62 & 63)	1
62	30700	Yoke, Governor	1
63	650494	Screw, Fil. Hd.	1
64	29536	Baffle, Blower Housing	1
65	650561	Screw, Hex Washer Hd.	2
67	34126	Bracket, Grommet Mounting	1
68	28545	Grommet, Plastic	1
68A	650643	Screw, Pan Hd. Self-Tap	1
69	29747A	Screw, Hex Hd.	2
70	34830	Housing, Blower (Incl. Ref. #135 & 136)	1
71	650815	Washer, Belleville	1
72	8116	Nut, Flywheel	1
75	*31688	Gasket, Carburetor	1
80	650372	Screw, Hex Hd.	2
82	35156	Knob, Control	1
83	29642	Ring, Retaining	1
87	30590A	Washer, Flat	1
88	33590	"O" Ring	1
89	33893A	Tube, Oil Fill	1
90	31342	Spring, Compression	1
91	650549	Screw, Fil. Hd.	1

*Included in Gasket Set, Ref. #169.

ENGINE, TECUMSEH MODEL NO. H50-65498R (Continued)

(5 H.P. SNOWTHROWER MODEL NO. 38040)

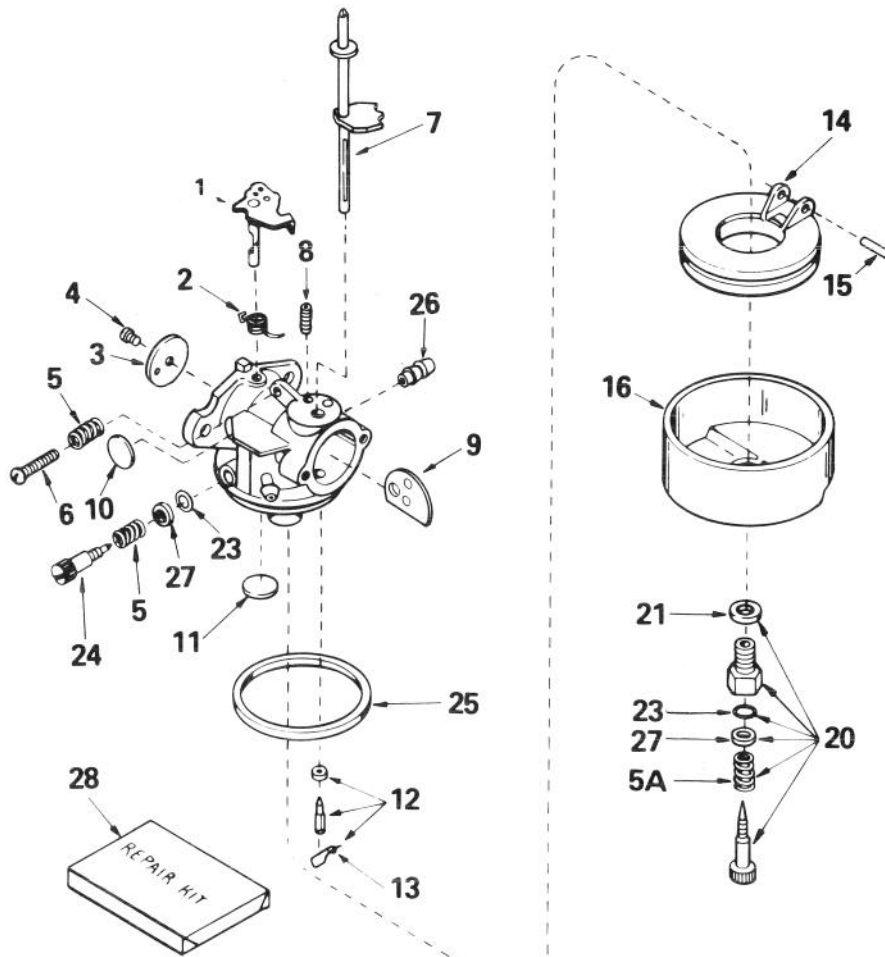


ENGINE, TECUMSEH MODEL NO. H50-65498R (Continued)
(5 H.P. SNOWTHROWER MODEL NO. 38040)

Ref. No.	Part No.	Description	No. Used
92	34663	Spring, Speed Control	1
93	610973	Terminal Assy.	1
93A	650821	Screw, Hex Washer Hd.	2
93B	34662	Link, Throttle	1
94	32398	Bracket, Choke	1
95	28820	Screw, Fil. Hd.	2
96	35060	Cover, Carburetor	1
97	650257	Screw, Pan Hd.	2
98	650765	Screw, Hex Washer Hd.	1
99	650760	Screw, Pan Hd. Taptite	1
100	29538	Base, Engine Mounting	1
102	*27930	Gasket, Muffler	1
103	32401	Muffler	1
104	650694A	Screw, Hex Flange Hd.	1
105	30196	Screw, Fil. Hd.	1
106	31845	Shaft, Mechanical Governor	1
107	30591	Gear Assy., Governor (Incl. Ref. #87)	1
108	29193	Ring, Retaining	1
109	30588A	Spool, Governor	1
110	26073	Washer, Flat	1
111	33166A	Bracket, Fuel Tank Mounting	1
112	34816	Bracket, Fuel Tank Mounting	1
113	650561	Screw, Hex Washer Hd.	1
114	34711	Tank, Fuel (Incl. Ref. #115)	1
115	34210	Cap, Fuel Tank	1
116	650665	Screw, Hex Washer Hd.	2
117	30962	Line, Fuel	1
118	29774	Line, Fuel	1
119	32961	Valve, Shut-Off	1
120	650128	Screw, Fil. Hd.	1
121	30622	Extension, Blower Housing	1
123	29716	Screw, Pan Hd.	4
129	32589	Key, Flywheel	1

Ref. No.	Part No.	Description	No. Used
130	31843A	Bracket, Governor Gear	1
131	650836	Screw, Hex Washer Hd.	2
133	650493	Screw, Hex Hd.	1
134	34664	Control Assy., Remote Speed (Incl. Ref. #90 thru 93)	1
135	650760	Screw, Pan Hd.	1
136	33013	Cover, Starter Bubble	1
138	32180C	Line, Primer	1
139	34814	Primer Assy.	1
144	650542	Screw, Hex Hd.	4
145	33876	Gasket, Stator	1
146	34240	Wire, Ground	1
147	31546	Bushing, Crankshaft	1
152	34127	Guard, Starter	1
153	32576	Seal, Snow Guard	1
154	27261	Washer	1
155	590574	Handle, Mitten Grip starter	1
158	26460	Clamp, Fuel Line	4
159	27793	Clip, Conduit	1
160	28942	Screw, Hex Washer Hd.	1
163	32125	Cup, Starter	1
164	35009	Screen, Starter Cup	1
166	611043	Magneto (The complete magneto is not available as an assembly. The magneto number is shown for reference purposes only. Order component parts individually, as shown in parts list.)	1
167	632379	Carburetor (Incl. Ref. #75)	1
168	590576	Starter Assy., Rewind	1
169	33235	Gasket Set	1

*Included in Gasket Set, Ref. #169.

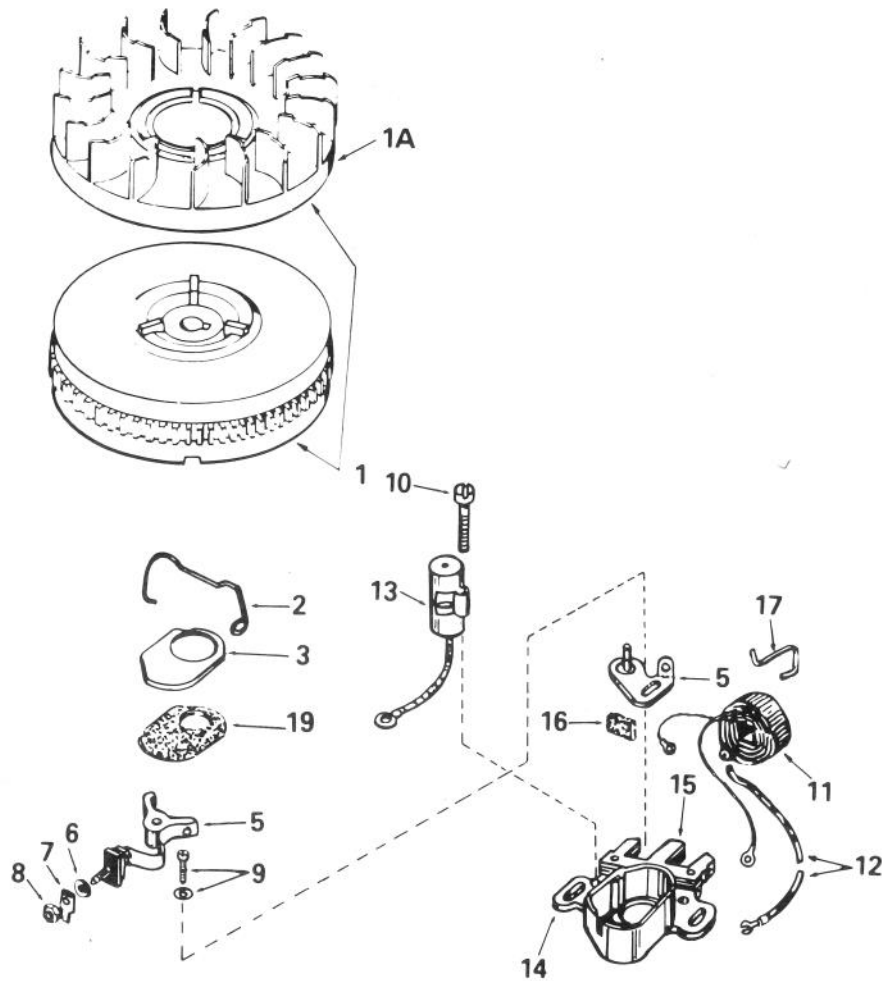


CARBURETOR NO. 632379
(5 H.P. SNOWTHROWER MODEL NO. 38040)

Ref. No.	Part No.	Description	No. Used
1	31834	Shaft & Lever Assy., Throttle	1
2	631767	Spring, Throttle Return	1
3	631036	Shutter, Throttle	1
4	650506	Screw, Throttle Shutter	1
5	630766	Spring, Regulating Screw	2
5A	630738	Spring, Main Adjustment Screw	1
6	650417	Screw, Idle Regulating	1
7	632373	Shaft, Choke	1
8	630735	Spring, Choke Positioning	1
9	632372	Shutter, Choke	1
10	*630748	Plug, Welch	1
11	*631027	Plug, Welch	1
12	*631021	Inlet Needle, Seat & Clip Assy. (Incl. Ref. #13)	1

Ref. No.	Part No.	Description	No. Used
13	631022	Clip, Inlet Needle	1
14	632019	Float, Carburetor	1
15	*631024	Shaft, Float	1
16	631867	Bowl, Float	1
20	*31839	Adjustment Screw Assy., Main (Incl. Ref. #5A, 21, 23 & 27)	1
21	27110	Gasket, Bowl-to-Body	1
23	*630740	"O" Ring, Adjustment Screw	2
24	*631078	Screw, Idle Adjustment	1
25	*631028	Gasket, Bowl-to-Body	1
26	632164	Fitting, Fuel Inlet	1
27	630739	Washer	2
28	31840	Repair Kit	1

*Included in Repair Kit, Ref. #28.



MAGNETO NO. 611043

(5 AND 7 H.P. SNOWTHROWER MODEL NOS. 38040 AND 38050)

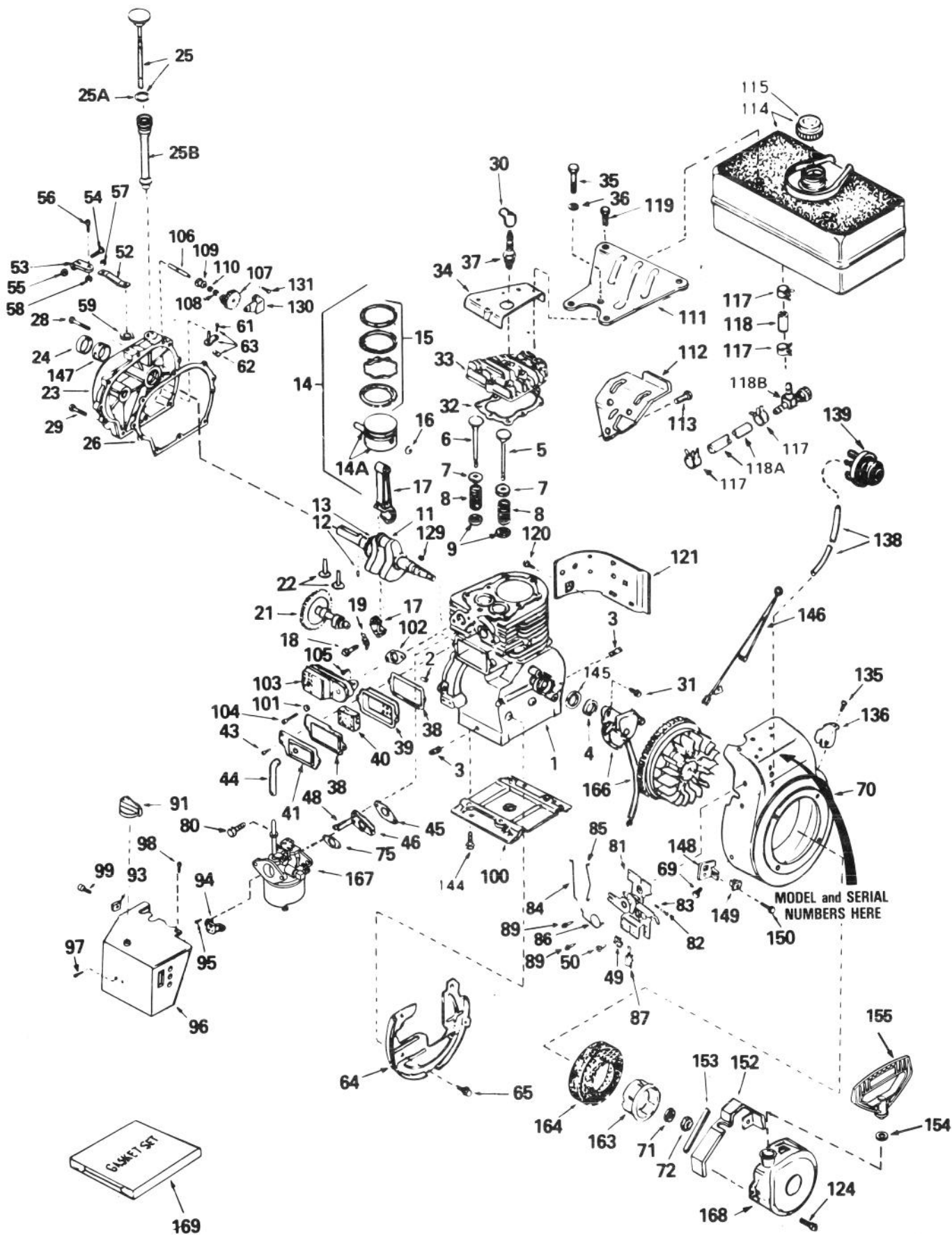
Ref. No.	Part No.	Description	No. Used
1	611042	Flywheel (Incl. Ref. #1A)	1
1A	610933	Fan, Blower	1
2	30551	Spring, Breaker Box Dust Cover	1
3	610947	Cover, Dust	1
5	30547A	Contact Assy., Breaker	1
6	610385	Washer, Terminal	1
7	33356	Tab, Ground Terminal	1
8	610408	Nut, Terminal	1
9	29181	Screw & Washer, Breaker	1

Ref. No.	Part No.	Description	No. Used
10	610593	Screw, Condenser	1
11	30560A	Coil Assy. (Incl. Ref. #12)	1
12	30554	Wire, Lead	1
13	30548B	Condenser	1
14	30545	Core & Plate	1
15	30561B	Stator Assy. (Incl. Ref. #2 thru 11, 13, 14, 16, 17 & 19)	1
16	30549	Felt, Cam Wiper	1
17	31311	Clip, Coil Locking	1
19	610957	Gasket, Dust Cover	1

NOTE: The complete magneto is not available as an assembly. The magneto number is shown for reference purposes only.
Order component parts individually, as shown in parts list.

ENGINE, TECUMSEH MODEL NO. H70-130257J

(7 H.P. SNOWTHROWER MODEL NO. 38050)



ENGINE, TECUMSEH MODEL NO. H70-130257J

(7 H.P. SNOWTHROWER MODEL NO. 38050)

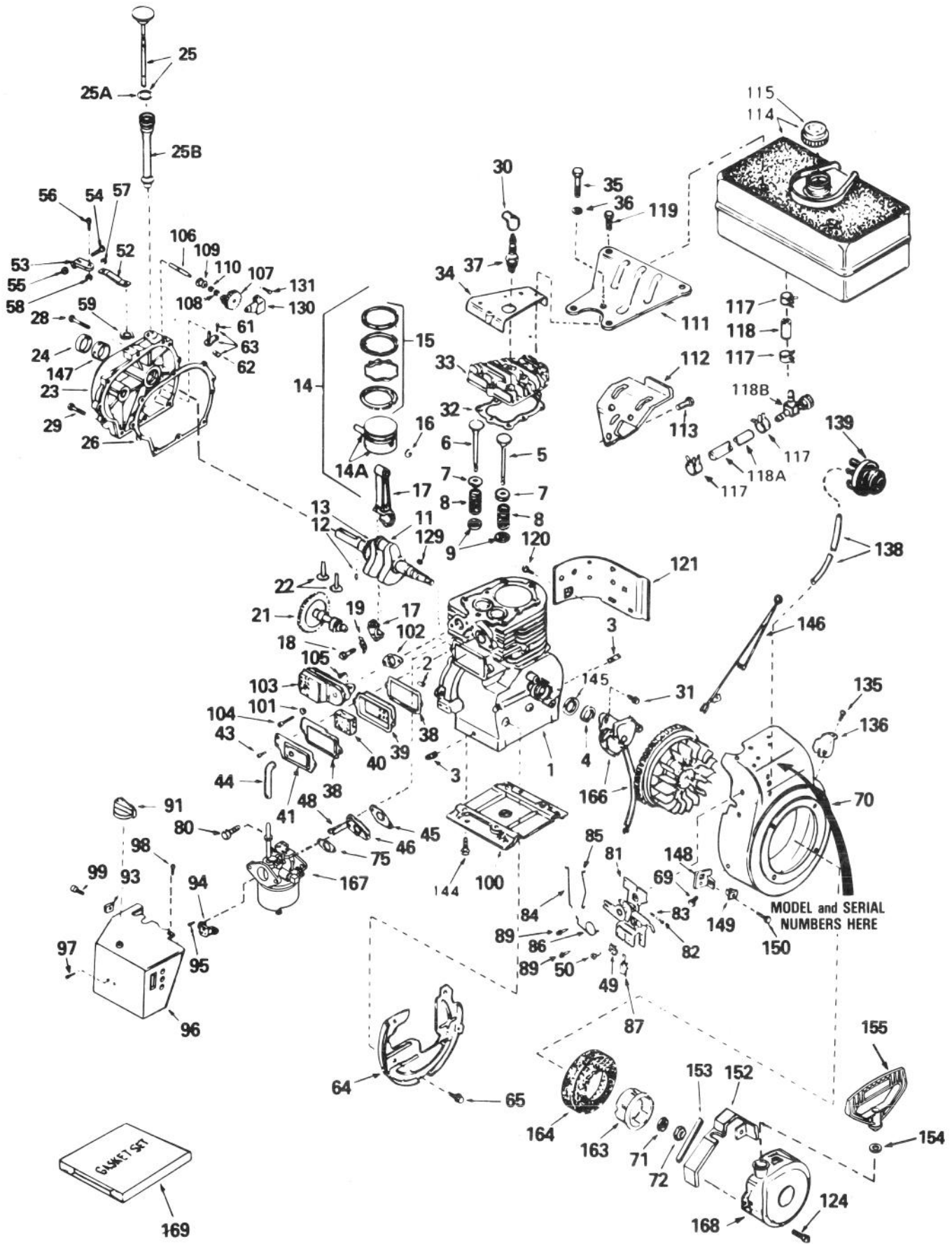
Ref. No.	Part No.	Description	No. Used
1	32586B	Cylinder Assy. (Incl. Ref. #2, 3 & 4)	1
2	27652	Pin, Dowel	2
3	27642	Plug, Sq. Hd. Pipe	2
4	32630	Seal, Oil	1
5	32783	Valve, Intake (Std.) (Incl. Ref. #9)	1
5	32784	Valve, Intake (1/32" oversize) (Incl. Ref. #9)	1
6	27878A	Valve, Exhaust (Std.) (Incl. Ref. #9)	1
6	27880A	Valve, Exhaust (1/32" oversize) (Incl. Ref. #9)	1
7	27882	Cap, Upper Valve Spring	2
8	27881	Spring, Valve	2
9	32581	Cap, Lower Valve Spring	2
11	34889	Crankshaft Assy. (Incl. Ref. #12 & 13)	1
12	29783	Pin, Crankshaft Gear	1
13	27884	Gear, Crankshaft	1
14	34517	Piston, Pin & Ring Assy. (Std.) (Incl. Ref. #14A, 15 & 16)	1
14	34518	Piston, Pin & Ring Assy. (.010 oversize) (Incl. Ref. #14A, 15 & 16)	1
14	34519	Piston, Pin & Ring Assy. (.020 oversize) (Incl. Ref. #14A, 15 & 16)	1
14A	32592B	Piston & Pin Assy. (Std.) (Incl. Ref. #16)	1
14A	32593B	Piston & Pin Assy. (.010 oversize) (Incl. Ref. #16)	1
14A	32594B	Piston & Pin Assy. (.020 oversize) (Incl. Ref. #16)	1
15	32595	Ring Set, Piston (Std.)	1
15	32596	Ring Set, Piston (.010 oversize)	1
15	32597	Ring Set, Piston (.020 oversize)	1
16	27888	Ring, Piston Pin Retaining	2
17	32591C	Rod Assy., Connecting (Incl. Ref. #18 & 19)	1
18	650662B	Screw, Connecting Rod	2
19	34242	Dipper, Oil	1
21	32115	Camshaft (Mechanical Compression Release)	1
22	34034	Lifter, Valve	2
23	31303B	Cover, Cylinder (Incl. Ref. #24, 106 & 147)	1
24	28427	Seal, Oil	1
25	34011A	Dipstick, Oil (Incl. Ref. #25A)	1
25A	33590	"O" Ring	1
25B	33893A	Tube, Oil Fill	1

Ref. No.	Part No.	Description	No. Used
26	*30684	Gasket, Cylinder Cover	1
28	650488	Screw, Hex Hd.	7
29	650493	Screw, Hex Hd.	1
30	610118	Cover, Spark Plug	1
31	650489	Screw, Hex Hd.	2
32	*32631	Gasket, Cylinder Head	1
33	30938A	Head, Cylinder (Incl. 3 of No. 35)	1
34	30939A	Cover, Cylinder Head	1
35	650697A	Screw, Hex Flange Hd.	8
36	650691	Washer, Flat	1
37	33636	Plug, Spark (Champion J-8 or equivalent) <u>Except for Canada</u>	1
37	34251 Canada	Resistor Spark Plug (Canadian regulations require RJ-17LM resistor spark plug)	1
38	*27896	Gasket, Valve Spring Cover	2
39	28423	Body Assy., Breather	1
40	28424	Element, Breather	1
41	28425	Cover, Valve Spring	1
43	650128	Screw, Fil. Hd.	2
44	27627	Tube, Breather	1
45	*27915	Gasket, Intake	1
46	34712	Flange, Carburetor (Incl. Ref. #80)	1
48	30196	Screw, Fil. Hd.	2
49	27793	Clip, Conduit	1
50	28942	Screw, Hex Washer Hd.	1
52	33454	Lever, Governor	1
53	29916	Clamp, Governor Lever	1
54	29826	Screw, Hex Washer Hd.	1
55	29216	Locknut, Hex	1
56	650548	Screw, Hex Washer Hd.	1
57	29918	Washer, Lock	1
58	30322	Locknut, Hex	1
59	29642	Ring, Retaining	1
61	650494	Screw, Fil. Hd.	1
62	30700	Yoke, Governor	1
63	30699C	Rod Assy., Governor (Incl. Ref. #61 & 62)	1
64	29536	Baffle, Blower Housing	1
65	650561	Screw, Hex Washer Hd.	2
69	29747A	Screw, Hex Hd.	2
70	34830	Housing, Blower (Incl. Ref. #135 & 136)	1
71	650815	Washer, Belleville	1
72	8116	Nut, Crankshaft	1
75	*31688	Gasket, Carburetor	1
80	650372	Screw, Hex Hd.	2
81	34664	Control Assy., Speed (Incl. Ref. #82, 83, 86 & 87)	1
82	650549	Screw, Fil. Hd.	1
83	31342	Spring, Compression	1

* Included in Gasket Set, Ref. #169.

ENGINE, TECUMSEH MODEL NO. H70-130257J (Continued)

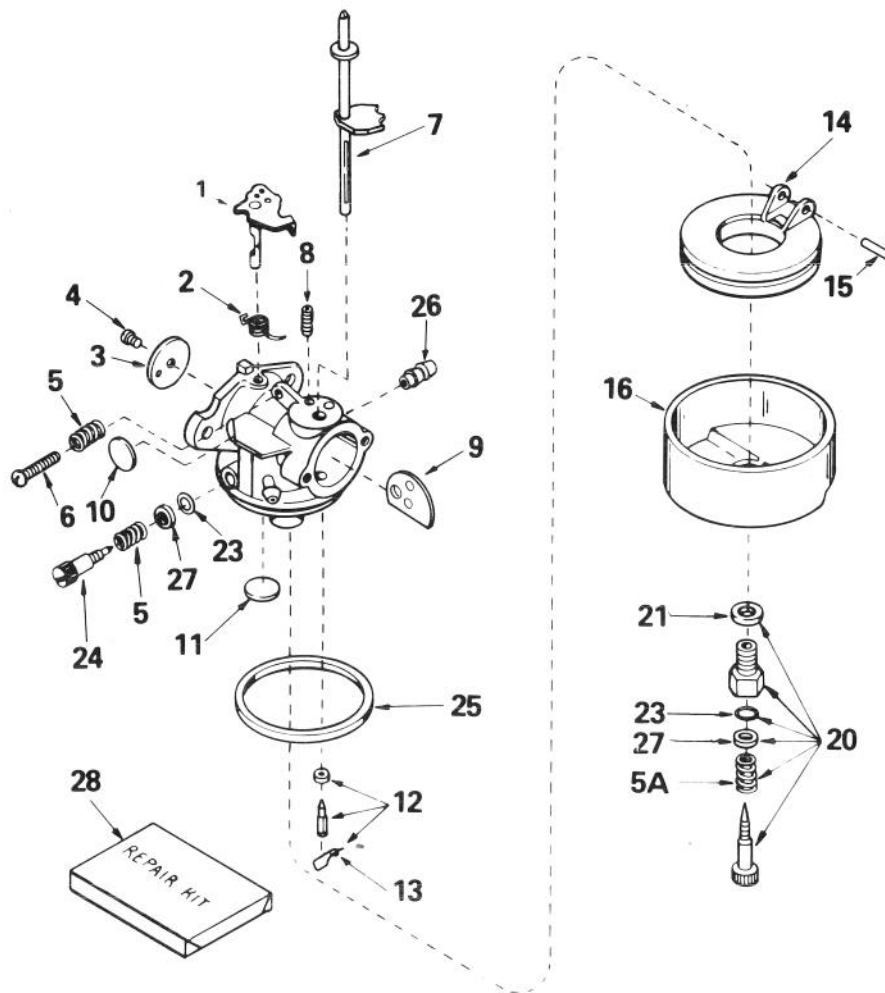
(7 H.P. SNOWTHROWER MODEL NO. 38050)



ENGINE, TECUMSEH MODEL NO. H70-130257J (Continued)
(7 H.P. SNOWTHROWER MODEL NO. 38050)

Ref. No.	Part No.	Description	No. Used	Ref. No.	Part No.	Description	No. Used
84	34661	Link, Governor	1	119	650665	Screw, Hex Washer Hd. Self-Tap	2
85	34662	Link, Throttle	1	120	650128	Screw, Fil. Hd.	1
86	34663	Spring, Seed Control	1	121	30622	Extension, Blower Housing	1
87	610973	Terminal Assy.	1	124	29716	Screw, Pan Hd.	4
89	650821	Screw, Hex Washer Hd. Thread Cutting	2	129	32589	Key, Flywheel	1
91	35156	Knob, Control	1	130	31843A	Bracket, Governor Gear	1
93	650764	Nut, "U" Type	1	131	650836	Screw, Hex Washer Hd. Thread Forming	2
94	32398	Bracket, Choke	1	135	650760	Screw, Pan Hd.	1
95	28820	Screw, Fil. Hd.	2	136	33013	Cover, Starter Bubble	1
96	35060	Cover, Carburetor	1	138	32180C	Line, Primer	1
97	650257	Screw, Pan Hd.	2	139	34814	Primer Assy.	1
98	650765	Screw, Hex Washer Hd. Self-Drilling	1	144	650542	Screw, Hex Hd.	4
99	650760	Screw, Pan Hd.	1	145	33876	Gasket, Stator	1
100	29538	Base, Engine Mounting	1	146	34240	Wire, Ground	1
101	26073	Washer, Flat	1	147	31546	Bushing, Crankshaft	1
102	*27930	Gasket, Muffler	1	148	34126	Bracket, Grommet Mounting	1
103	32401	Muffler	1	149	28545	Grommet, Plastic	1
104	650694A	Screw, Hex Flange Hd.	1	150	650643	Screw, Pan Hd. Self-Tap	1
105	30196	Screw, Fil. Hd.	1	152	34127	Guard, Starter	1
106	31845	Shaft, Mechanical Governor	1	153	32576	Seal, Snow Guard	1
107	30591	Gear Assy., Governor (Incl. Ref. #110)	1	154	27261	Washer	1
108	29193	Ring, Retaining	1	155	590574	Handle, Mitten Grip Starter	1
109	30588A	Spool, Governor	1	163	32125	Cup, Starter	1
110	30590A	Washer, Flat	1	164	35009	Screen, Starter Cup	1
111	34159	Plate, Fuel Tank Mounting	1	166	611043	Magneto (The complete magneto is not available as an assembly. The magneto number is shown for reference purposes only. Order component parts individually, as shown in parts list.)	1
112	34158	Bracket, Fuel Tank Mounting	1	167	632371	Carburetor (Incl. Ref. #75)	1
113	650561	Screw, Hex Washer Hd.	1	168	590576	Starter Assy., Rewind	1
114	34186	Tank Assy., Fuel (Incl. Ref. #115)	1	169	33239	Gasket Set	1
115	34210	Cap, Fuel	1				
117	26460	Clamp, Fuel Line	4				
118	30962	Line, Fuel	1				
118A	29774	Line, Fuel	1				
118B	32961	Valve, Shut-off	1				

*Included in Gasket Set, Ref. #169.

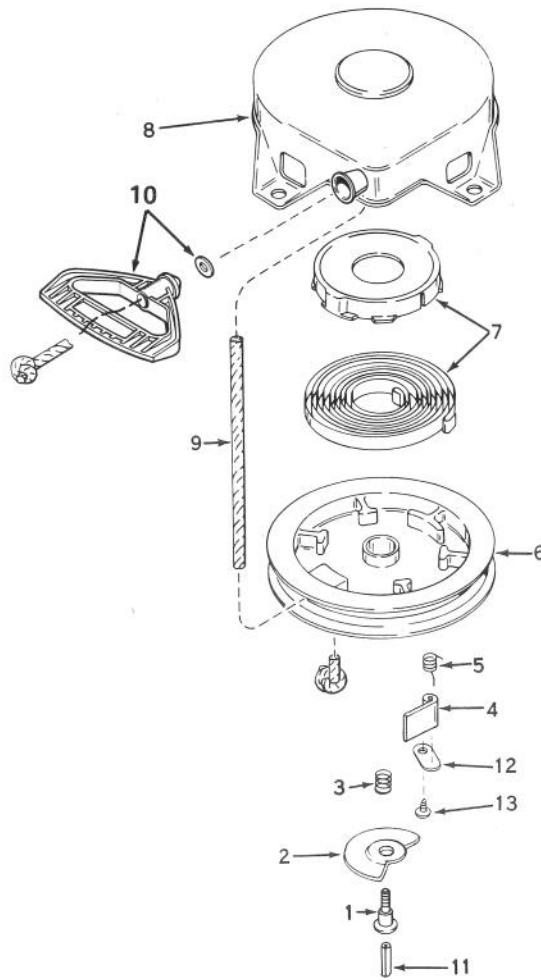


CARBURETOR NO. 632371
(7 H.P. SNOWTHROWER MODEL NO. 38050)

Ref. No.	Part No.	Description	No. Used
1	31834	Shaft & Lever Assy., Throttle	1
2	631767	Spring, Throttle Return	1
3	631036	Shutter, Throttle	1
4	650506	Screw, Throttle Shutter	1
5	630766	Spring, Regulating Screw	2
5A	630738	Spring, Main Adjustment Screw	1
6	650417	Screw, Idle Regulating	1
7	632373	Shaft, Choke	1
8	630735	Spring, Choke Positioning	1
9	632372	Shutter, Choke	1
10	*630748	Plug, Welch	1
11	*631027	Plug, Welch	1
12	*631021	Inlet Needle, Seat & Clip Assy. (Incl. Ref. #13)	1

Ref. No.	Part No.	Description	No. Used
13	631022	Clip, Inlet Needle	1
14	632019	Float, Carburetor	1
15	*631024	Shaft, Float	1
16	631867	Bowl, Float	1
20	*31839	Adjustment Screw Assy., Main (Incl. Ref. #5A, 21, 23 & 27)	1
21	27110	Gasket, Bowl-to-Body	1
23	*630740	"O" Ring, Adjustment Screw	2
24	*631078	Screw, Idle Adjustment	1
25	*631028	Gasket, Bowl-to-Body	1
26	632164	Fitting, Fuel Inlet	1
27	630739	Washer	2
28	31840	Repair Kit	1

*Included in Repair Kit, Ref. #28.



REWIND STARTER NO. 590576
(5 AND 7 H.P. SNOWTHROWER MODEL NOS. 38040 AND 38050)

Ref. No.	Part No.	Description	No. Used
1	590409A	Screw	1
2	590474	Cam, Dog	1
3	590411	Spring, Brake	1
4	590148	Dog, Starter	1
5	590475	Spring, Dog	1
6	590478	Pulley	1
7	590414	Spring & Keeper Assy.	1

Ref. No.	Part No.	Description	No. Used
8	590577	Housing Assy., Starter (Incl. Ref. #1)	1
9	590451A	Rope, Starter	1
10	590574	Handle, Mitten Grip (Not included with starter)	1
11	590459	Pin, Centering	1
12	590476	Retainer, Dog	1
13	590477	Screw	1

IDENTIFICATION AND ORDERING

MODEL AND SERIAL NUMBERS

The Snowthrower has two identification numbers: a model number and a serial number. The two numbers are stamped on a decal which is located on back of engine mounting plate. In any correspondence concerning the Snowthrower, supply model and serial numbers to assure that correct information and replacement parts are obtained.

To order replacement parts from an Authorized TORO Service Dealer, supply the following information:

1. Model and serial numbers of the Snowthrower.
2. Part number, description, and quantity of part(s) desired.

Note: Do not order by reference number if a parts catalog is being used; use the PART NUMBER.

The Toro Promise

A TWO YEAR LIMITED WARRANTY

The Toro Company promises to repair any TORO Product if defective in materials or workmanship. The following time periods from the date of purchase apply:

Residential Product 2 Year
Residential Products Used Commercially . . . 45 Days

The costs of parts and labor are included, but the customer pays the transportation costs. Just return any residential product to an Authorized TORO Service Dealer or TORO Distributor.

Should you feel your TORO Product is defective and wish to rely on The Toro Promise, the following procedure is recommended:

1. Contact any Authorized TORO Service Dealer, TORO Master Service Dealer, or TORO Distributor (the Yellow Pages of your telephone directory is a good reference source).
2. He will either instruct you to return the product to him or recommend another Authorized TORO Service outlet which might be more convenient.
3. Bring the product along with your original sales slip, or other evidence of purchase date, to the service dealer.
4. The servicing dealer will inspect the unit, advise you whether the product is defective and, if so, make all repairs necessary to correct the defect without extra charge to you.

If for any reason you are dissatisfied with the dealer's analysis of the defect or the service performed, you may contact us.

Write:

TORO Consumer Service Department
8111 Lyndale Avenue South
Minneapolis, Minnesota 55420

The above remedy of product defects through repair by an Authorized TORO Service Dealer is the purchaser's sole remedy for any defect.

THERE IS NO OTHER EXPRESS WARRANTY. ALL IMPLIED WARRANTIES OF MERCHANTABILITY AND

FITNESS FOR USE ARE LIMITED TO THE DURATION OF THE EXPRESS WARRANTY.

Some states do not allow limitations on how long an implied warranty lasts, so the above limitation may not apply to you.

This warranty applies only to parts or components which are defective and does not cover repairs necessary due to normal wear, misuse, accidents, or lack of proper maintenance. Regular, routine maintenance of the unit to keep it in proper operating condition is the responsibility of the owner.

All warranty repairs reimbursable under The Toro Promise must be performed by an Authorized TORO Service Dealer using Toro approved replacement parts.

Repairs or attempted repairs by anyone other than an Authorized TORO Service Account are not reimbursable under The Toro Promise. In addition, these unauthorized repair attempts may result in additional malfunctions, the correction of which is not covered by warranty.

THE TORO COMPANY IS NOT LIABLE FOR INDIRECT, INCIDENTAL OR CONSEQUENTIAL DAMAGES IN CONNECTION WITH THE USE OF THE PRODUCT INCLUDING ANY COST OR EXPENSE OF PROVIDING SUBSTITUTE EQUIPMENT OR SERVICE DURING PERIODS OF MALFUNCTION OR NON-USE.

Some states do not allow the exclusion or limitation of incidental or consequential damages, so the above limitation or exclusion may not apply to you.

This warranty gives you specific legal rights, and you may also have other rights which vary from state to state.

COUNTRIES OTHER THAN THE UNITED STATES OR CANADA

Customers who have purchased TORO products exported from the United States or Canada should contact their TORO Distributor (Dealer) to obtain guarantee policies for your country, province or state. If for any reason

you are dissatisfied with your Distributor's service or have difficulty obtaining guarantee information, contact the TORO importer. If all other remedies fail, you may contact us at The Toro Company.