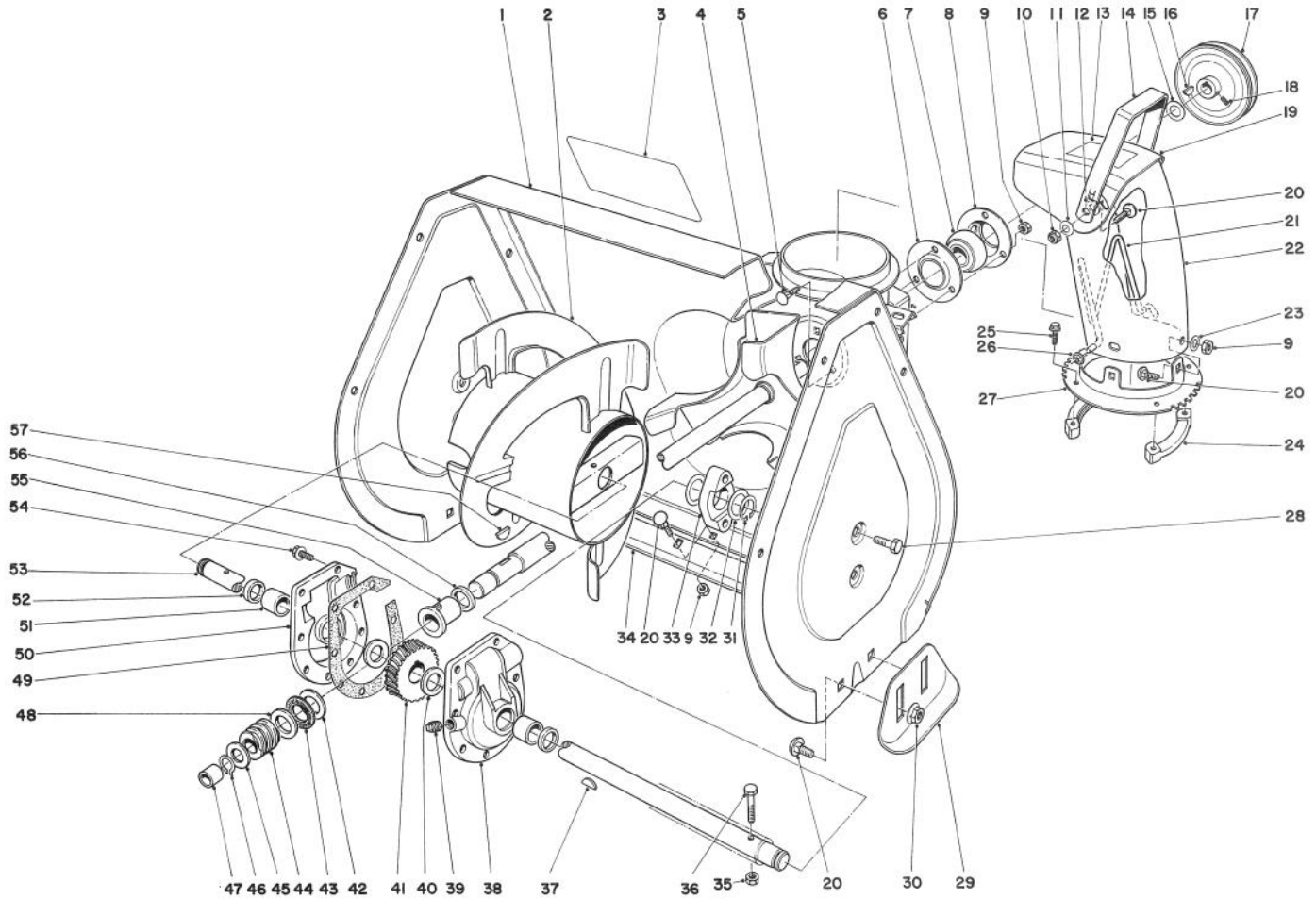


TORO[®]

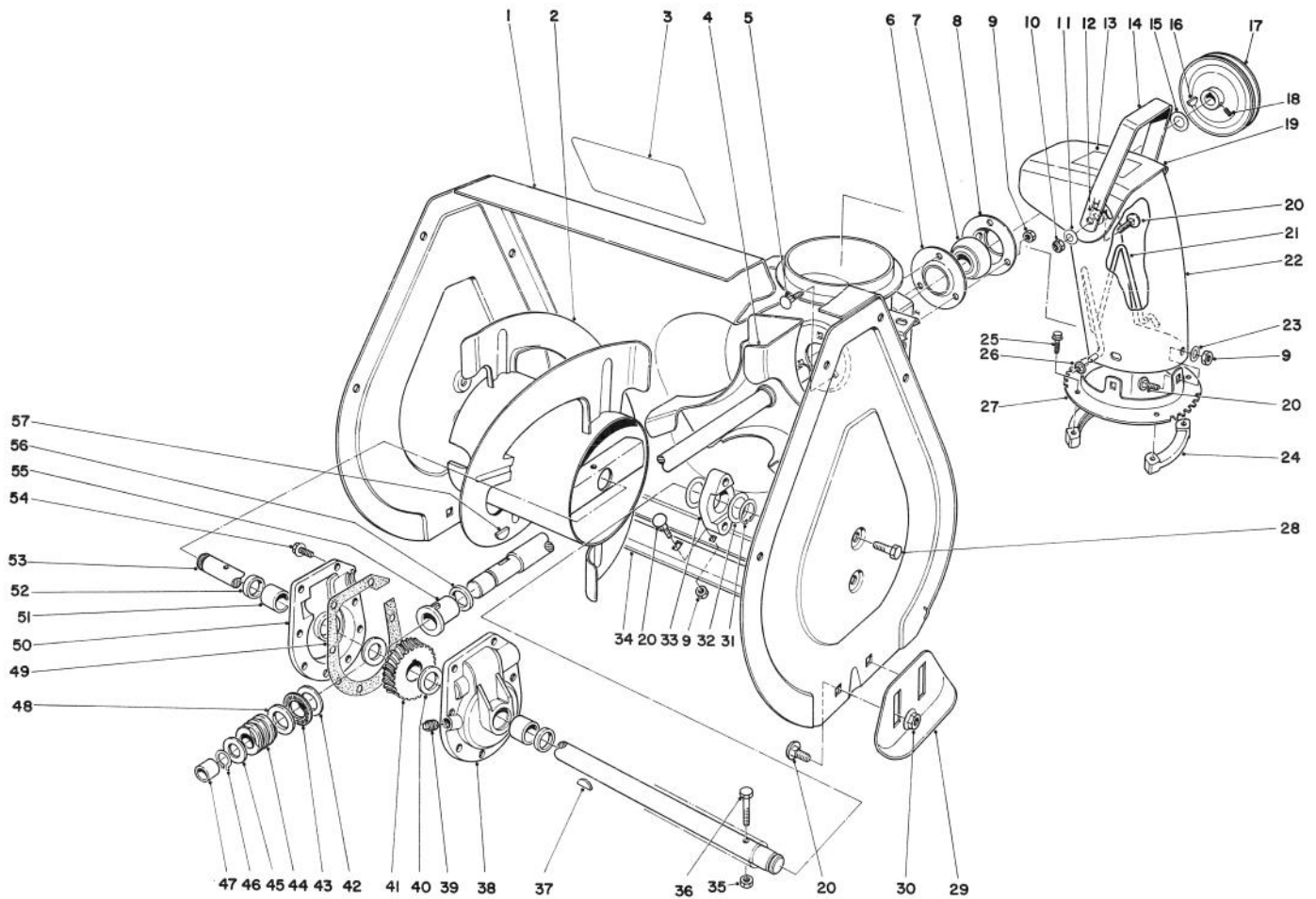
MODEL NO. 38052-5000001 & UP

**PARTS
CATALOG****521 SNOWTHROWER****AUGER ASSEMBLY**

Ref. No.	Part No.	Description	No. Used
1	43-7320	Auger Housing	1
2	39-1180	Auger R.H.	1
*	39-1190	Auger L.H.	1
3	29-6350	Decal — Auger Warning	1
4	37-6990	Shaft & Impeller	1
5	3230-10	Carriage Bolt	3
6	26-6110	Bearing Flange Front	1
7	26-6100	Ball Bearing	1
8	26-6120	Bearing Flange Rear	1
9	3296-29	Locknut	11
10	32152-1	Locknut	2
11	3290-340	Washer Belleville	2
12	20-4320	Washer Rubber	2
13	53-7660	Decal — Discharge	1
14	37-8930	Handle Deflector	1
15	3-0737	Washer	1

Ref. No.	Part No.	Description	No. Used
16	3257-5	Key	1
17	37-6890	Pulley	1
18	3242-4	Set Screw	2
19	11-9359	Deflector (Incl. Ref. #13)	1
20	3230-1	Carriage Bolt	14
21	53-7590	Wire — Chute	1
22	53-7600	Chute — Discharge	1
23	3256-23	Washer	3
24	37-6490	Retainer — Chute Ring	3
25	27-0220	Self Tapping Screw	6
26	3290-326	Push Nut	1
27	37-8940	Chute Ring	1
28	32144-11	Self Tapping Screw	4
29	40-8160	Skid	2
30	32128-20	Flange Nut	4
31	32151-36	Snap Ring	2

*Not Illustrated

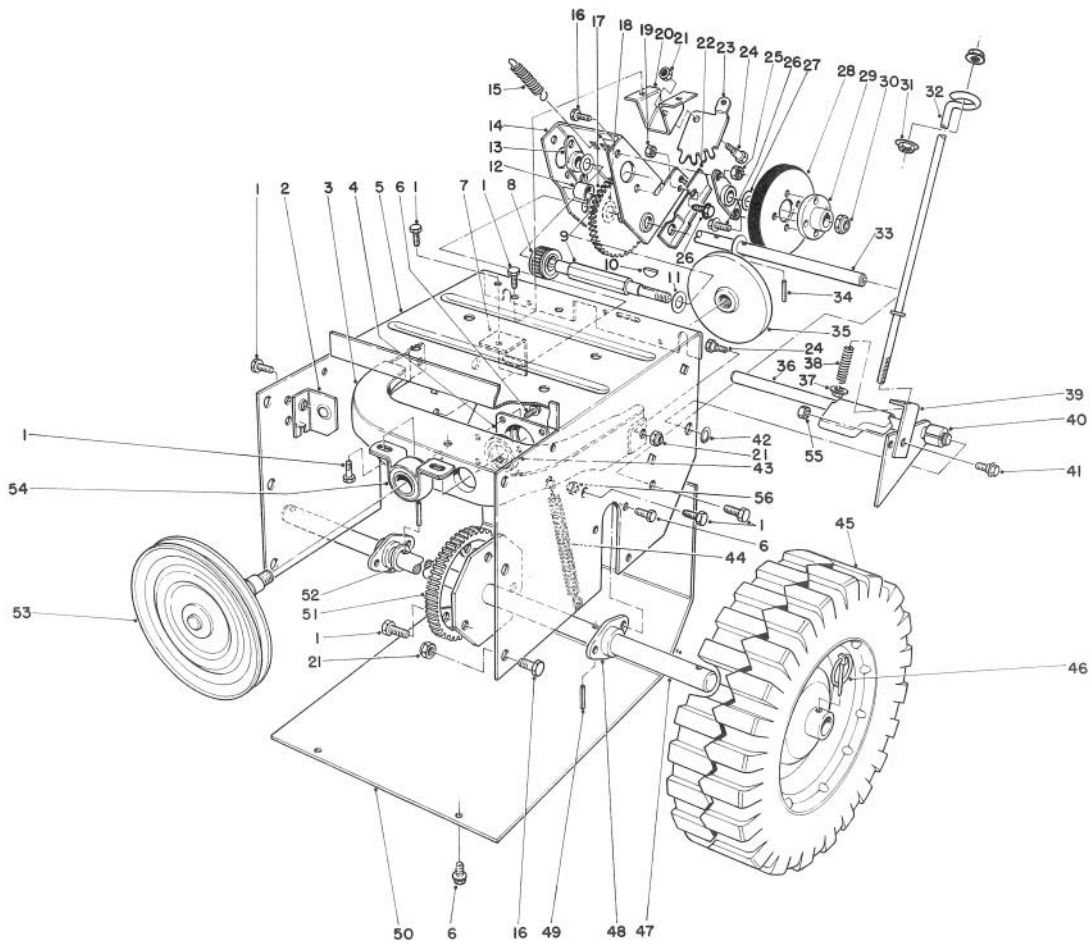


AUGER ASSEMBLY (Continued)

Ref. No.	Part No.	Description	No. Used
32	5-1550	Thrust Washer	4
33	37-6550	Auger Bearing	2
34	39-1550	Scraper Blade	1
35	32152-4	Locknut	2
36	321-10	Capscrew	2
37	3257-33	Woodruff Key	1
38	37-8860	Gear Case L.H. (Incl. Ref. #51 & 52)	1
39	281-1	Pipe Plug	1
40	252-71	Thrust Bearing	2
41	23-9050	Gear	1
42	257-3	Thrust Washer	1
43	252-76	Needle Thrust Bearing	1
44	5-7170	Worm	1
45	3-8664	Washer	1

Ref. No.	Part No.	Description	No. Used
46	32120-72	Retaining Ring	1
47	256-32	Bushing	1
48	252-80	Thrust Washer	1
49	51-0460	Gasket	1
50	37-8850	Gear Case R.H. (Incl. Ref. #51 & 52)	1
51	256-237	Bushing	2
52	7-0045	Oil Seal	2
53	37-6800	Shaft — Auger	1
54	32144-41	Self Tapping Screw	8
55	37-6560	Bushing — Input	1
56	237-87	Seal	1
57	3257-23	Key — Woodruff	1
*	37-6960	Gear Case Assy. Complete	1

*Not Illustrated

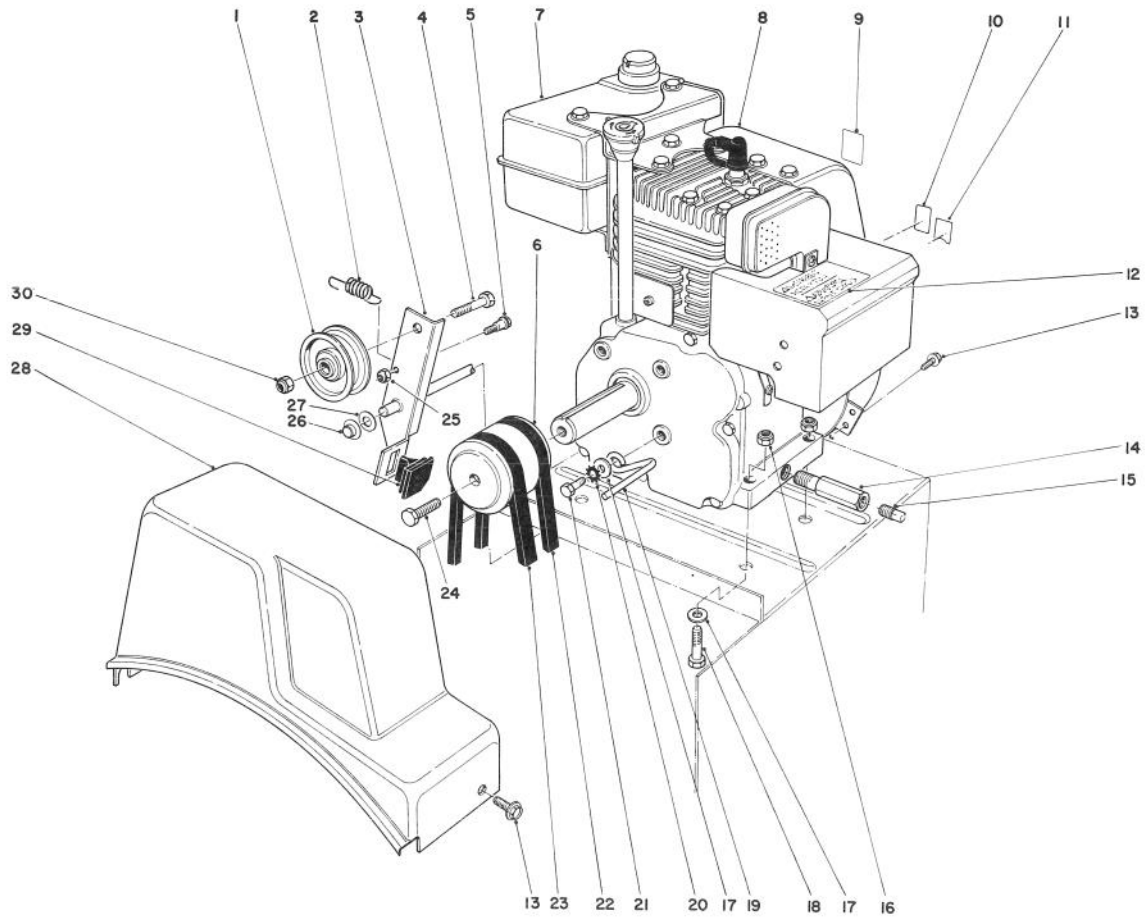


TRACTION ASSEMBLY

Ref. No.	Part No.	Description	No. Used
1	32144-11	Hex Self Tapping Screw	12
2	37-9060	Mount — Clutch Rod Front	1
3	37-6740	Friction Plate Frame	1
4	37-6730	Cup — Bearing	1
5	37-8900	Traction Frame	1
6	12-3270	Hex Tapping Screw	12
7	37-9070	Mount — Clutch Rod Rear	1
8	37-6500	Sliding Gear	1
9	37-6780	Hex Shaft	1
10	3257-24	Key	1
11	5-7570	Thrust Washer	2
12	256-86	Bushing	1
13	20-1620	Bearing — Friction Wheel	2
14	39-1230	Bracket — Sliding	1
15	37-8880	Spring — Traction Disengage	1
16	322-2	Capscrew	10
17	37-9160	Intermediate Gear & Bushing (Incl. Ref. #12)	1
18	10-9280	Thrust Washer	2
19	3296-16	Locknut	1
20	37-8790	Mount — Quadrant Gear	1
21	3296-29	Locknut	9
22	39-1250	Cam Receiver	1
23	37-8800	Quadrant Gear	1
24	37-8770	Shoulder Bolt	3
25	32152-1	Locknut	4
26	11-9760	Self Tapping Screw	5
27	36-4790	Thrust Washer	2
28	37-6570	Friction Wheel	1

Ref. No.	Part No.	Description	No. Used
29	39-1520	Hub — Friction Wheel Mount	1
30	3296-48	Locknut	1
31	32128-33	Flange Locknut	2
32	39-3060	Lower Traction Rod	1
33	37-6760	Shaft — Pivot	1
34	32121-45	Roll Pin	2
35	38-0800	Friction Plate	1
36	43-7310	Traction Engagement Assy.	1
37	32128-10	Flange Locknut	1
38	38-4520	Spring — Compression	1
39	38-4490	Bracket — Traction	1
40	40-9680	Spacer	1
41	40-8350	Shoulder Screw	1
42	32151-61	Retaining Ring	1
43	38-7820	Bearing	1
44	37-8870	Spring — Friction Plate Frame	1
45	38-1400	Wheel Assembly	2
46	3290-243	Pin — Klik	2
47	37-6970	Axle Shaft	1
48	37-6850	Axle Bearing	2
49	32121-31	Roll Pin	2
50	37-6830	Bottom Cover	1
51	37-6520	Axle Gear	1
52	3-8664	Thrust Washer	2
53	40-8190	Pulley & Shaft	1
54	38-4470	Bushing Assembly	1
55	3296-42	Nut — Lock	1
56	32111-8	Nut — Cap	1
*	37-7010	Tire Chain Kit (Optional)	1
*	11-5529	Loose Parts	1

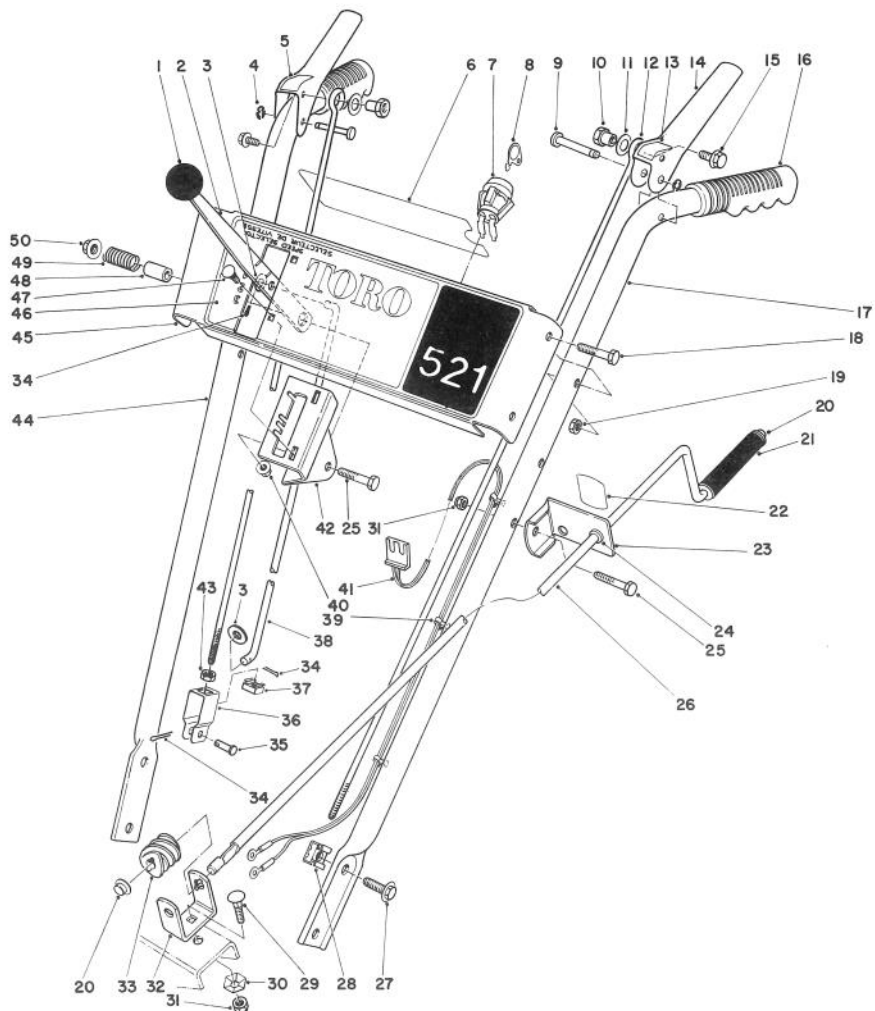
*Not Illustrated



ENGINE ASSEMBLY

Ref. No.	Part No.	Description	No. Used
1	3-4244	Idler Pulley	1
2	53-7570	Spring — Auger Disengage	1
3	8-8649	Auger Clutch (Incl. Ref. #29)	1
4	323-29	Capscrew	1
5	42-3560	Bolt — Shoulder	1
6	43-7370	Engine Pulley	1
7	52-2680	Gas Tank w/Cap	1
8	221-780	Engine	1
9	39-3860	Decal — Primer	1
10	37-8890	Decal — Throttle	1
11	39-3850	Decal — Choke	1
12	29-6390	Decal — Hot Surface Warning	1
13	12-3270	Self Tapping Screw	3
14	49-3040	Drain Tube	1
15	281-7	Pipe Plug	1

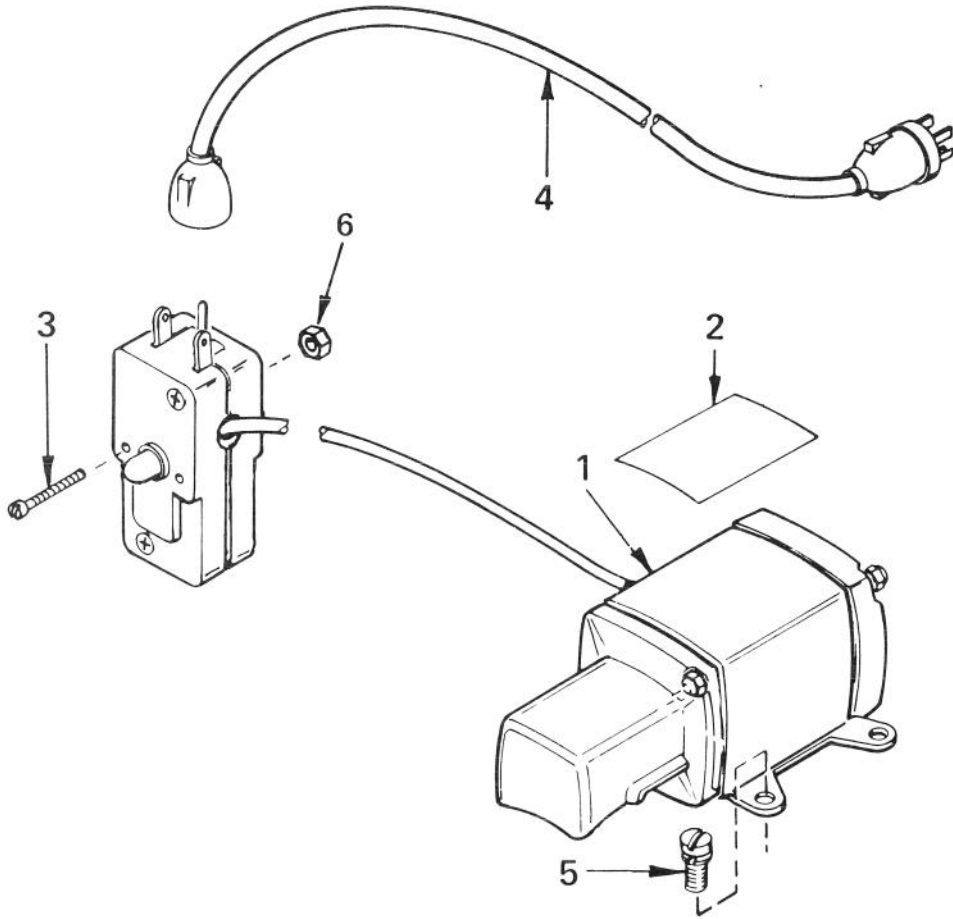
Ref. No.	Part No.	Description	No. Used
16	3296-29	Locknut	4
17	3256-23	Flat Washer	5
18	322-7	Capscrew	4
19	37-8990	Belt Retainer	1
20	3255-8	Lockwasher — External Tooth	1
21	3210-3	Capscrew	1
22	37-9090	V-Belt — Traction	1
23	37-9080	V-Belt — Auger	1
24	43-7290	Screw — Special	1
25	3296-42	Locknut	1
26	3290-320	Nut — Push On	1
27	3256-24	Flat Washer	1
28	37-6900	Belt Cover	1
29	40-8140	Molded Brake Assy.	1
30	32152-2	Locknut	1



HANDLE ASSEMBLY

Ref. No.	Part No.	Description	No. Used
1	233-21	Knob	1
2	37-8820	Selector — Speed	1
3	3256-23	Washer	2
4	32151-73	Ring — Clip	2
5	52-5650	Decal — Auger Drive	1
6	37-9140	Decal — Escutcheon Back	1
7	40-5940	Switch — On-Off	1
8	33-2010	Key — Ignition	1
9	52-5600	Pin — Control Lever	2
10	47-4990	Post — Linkage Mounting	2
11	3256-24	Washer	2
12	52-5590	Link — Upper	2
13	52-5630	Decal — Wheel Drive	1
14	52-5580	Handle — Control	2
15	3234-13	Screw — Hex Flange Hd.	2
16	37-9110	Grip — Handle	2
17	52-5570	Handle — Left	1
18	321-37	Screw — Hex Hd.	4
19	32152-4	Nut — Lock	4
20	3290-320	Nut — Push	2
21	40-8230	Grip — Rod	1
22	29-6370	Decal — Chute Direction	1
23	6-3069	Bracket — Chute Control (Incl. Ref. #22 & 24)	1
24	256-249	Nyliner	1
25	322-7	Screw — Hex Hd.	2

Ref. No.	Part No.	Description	No. Used
26	40-8270	Rod — Chute Control	1
27	3234-14	Screw — Hex Flange Hd.	4
28	3290-196	Nut — Retainer	4
29	3230-2	Bolt — Carriage	1
30	3290-238	Washer — Pyramidal	1
31	3296-29	Nut — Lock	2
32	40-8280	Bracket — Chute Worm	1
33	40-8250	Gear — Worm	1
34	3272-4	Pin — Cotter	3
35	283-3	Pin — Clevis	1
36	39-3080	Clevis	1
37	32115-5	Nut — Retainer	1
38	39-7570	Rod — Speed Selector	1
39	17-9120	Mount — Wire	3
40	32128-32	Nut — Flange Lock	2
41	43-7390	Wire Harness Assembly (Incl. Ref. #39)	1
42	39-1280	Mount — Speed Selector	1
43	3218-1	Nut — Jam	1
44	52-5560	Handle — Right	1
45	43-7360	Panel — Escutcheon	1
46	53-7640	Decal — 521	1
47	3229-22	Bolt — Carriage	2
48	40-8130	Spacer — Speed Selector	1
49	37-9150	Spring	1
50	32128-13	Nut — Flange Lock	1

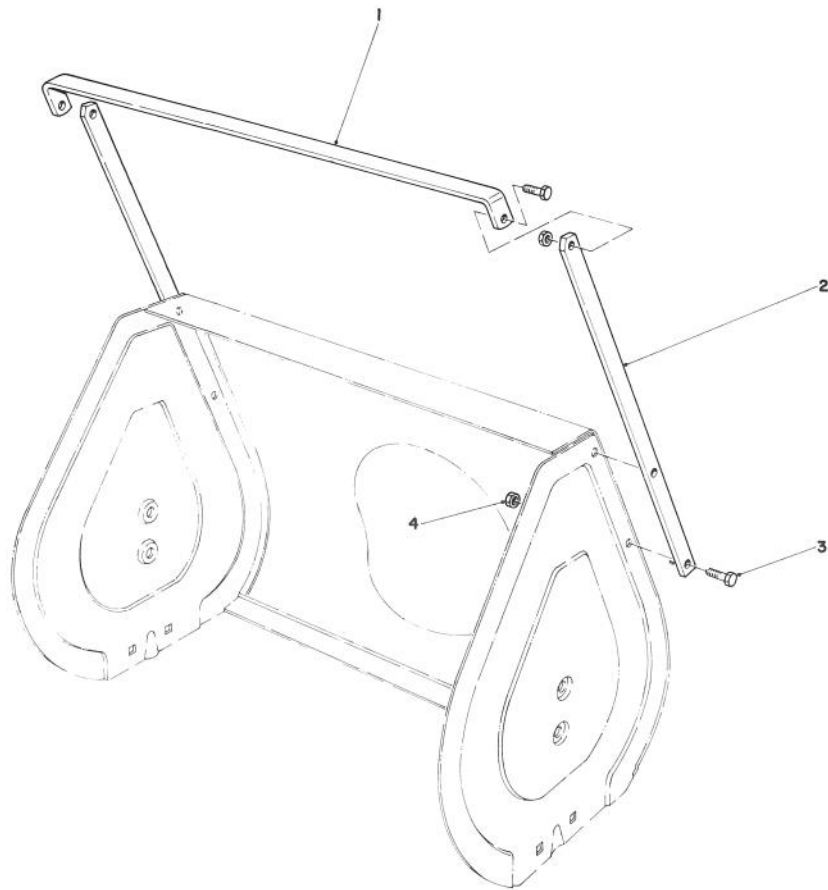


STARTER MOTOR KIT MODEL 23-3790

Ref. No.	Part No.	Description	No. Used
1†	33517A	Motor — Cranking (CSA Approved (Incl. Ref. #2 thru 6)	1
2†	34161	Decal	1
3†	650741	Screw — Hex Hd. Self Tap	2

Ref. No.	Part No.	Description	No. Used
4†	32450A	Cord — Extension	1
5†	650759	Screw — Hex Washer Hd.	3
6†	650742	Nut & Lockwasher	2

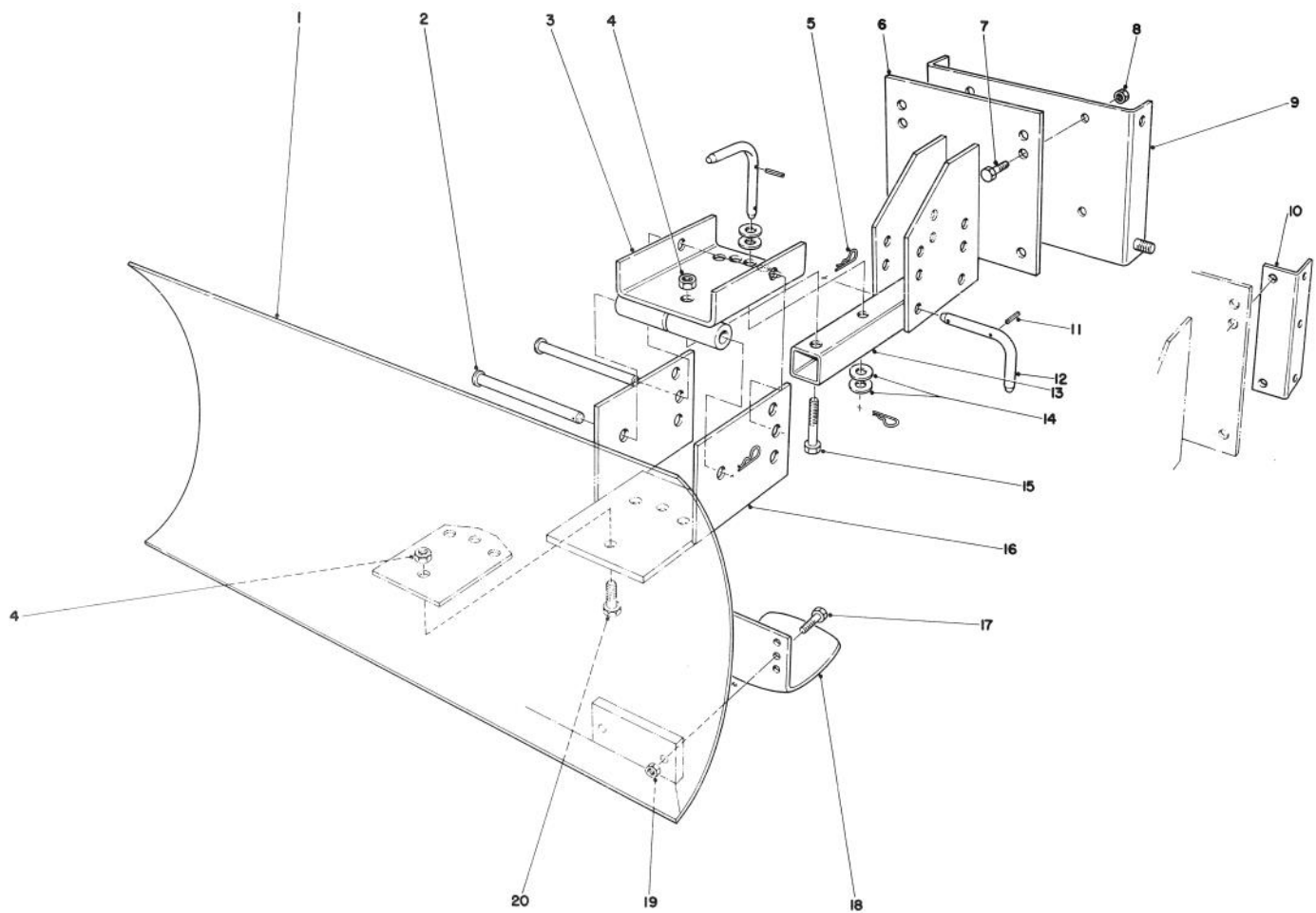
† Note: Obtain individual replacement parts from your local Tecumseh Dealer.



DRIFT BREAKER KIT NO. 37-7020 (Optional)

Ref. No.	Part No.	Description	No. Used
1	38-0760	Drift Breaker — Top	1
2	38-0750	Drift Breaker — Side	2

Ref. No.	Part No.	Description	No. Used
3	322-4	Capscrew	6
4	3296-29	Locknut	6

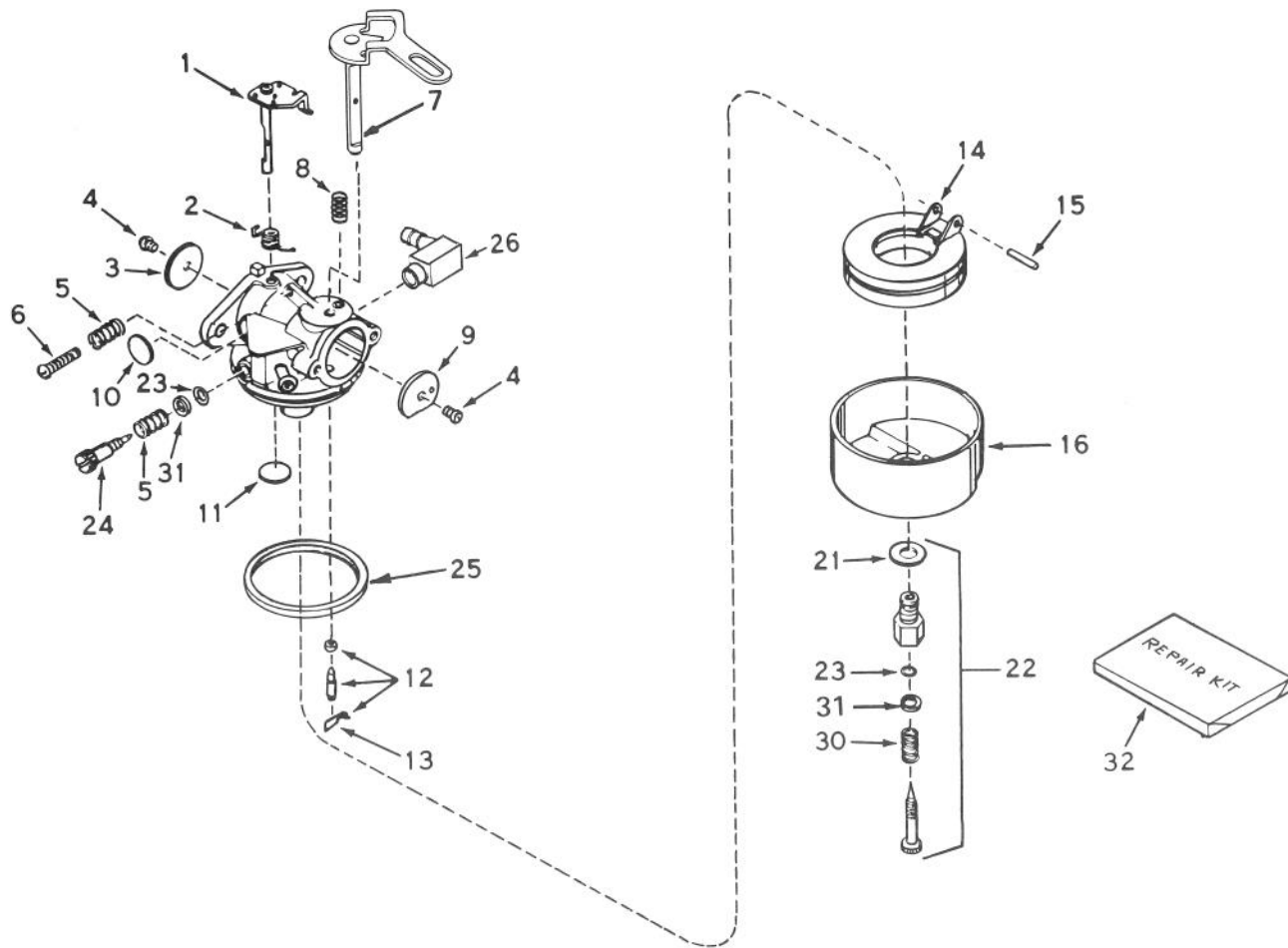


GRADER BLADE ASSEMBLY MODEL 59099 (Optional)

Ref. No.	Part No.	Description	No. Used
1	7-4374	Blade	1
2	283-38	Clevis Pin	2
3	20-5090	Swivel Bracket	1
4	32152-3	Locknut	5
5	3290-322	Hairpin Cotter	5
6	20-5170	Mounting Plate	1
7	323-6	Capscrew	4
8	32152-2	Locknut	4
9	22-4920	Mounting Plate Bracket (Used with 826 and 1132 only)	1
10	39-7850	Mounting Rail (Used with 3521, 421 & 521 Units only)	2

Ref. No.	Part No.	Description	No. Used
11	32121-45	Roll Pin	3
12	20-5210	Pivot Pin (Incl. Ref. #11)	3
13	20-5140	Tongue Blade	1
14	3256-5	Flat Washer	4
15	325-11	Capscrew	1
16	20-5130	Blade Adjustment	1
17	322-6	Capscrew	4
18	7-1023	Skid	2
19	32152-1	Locknut	4
20	325-5	Capscrew	4
*	20-9950	Air Cleaner Kit (Tecumseh)	1

*Not Illustrated



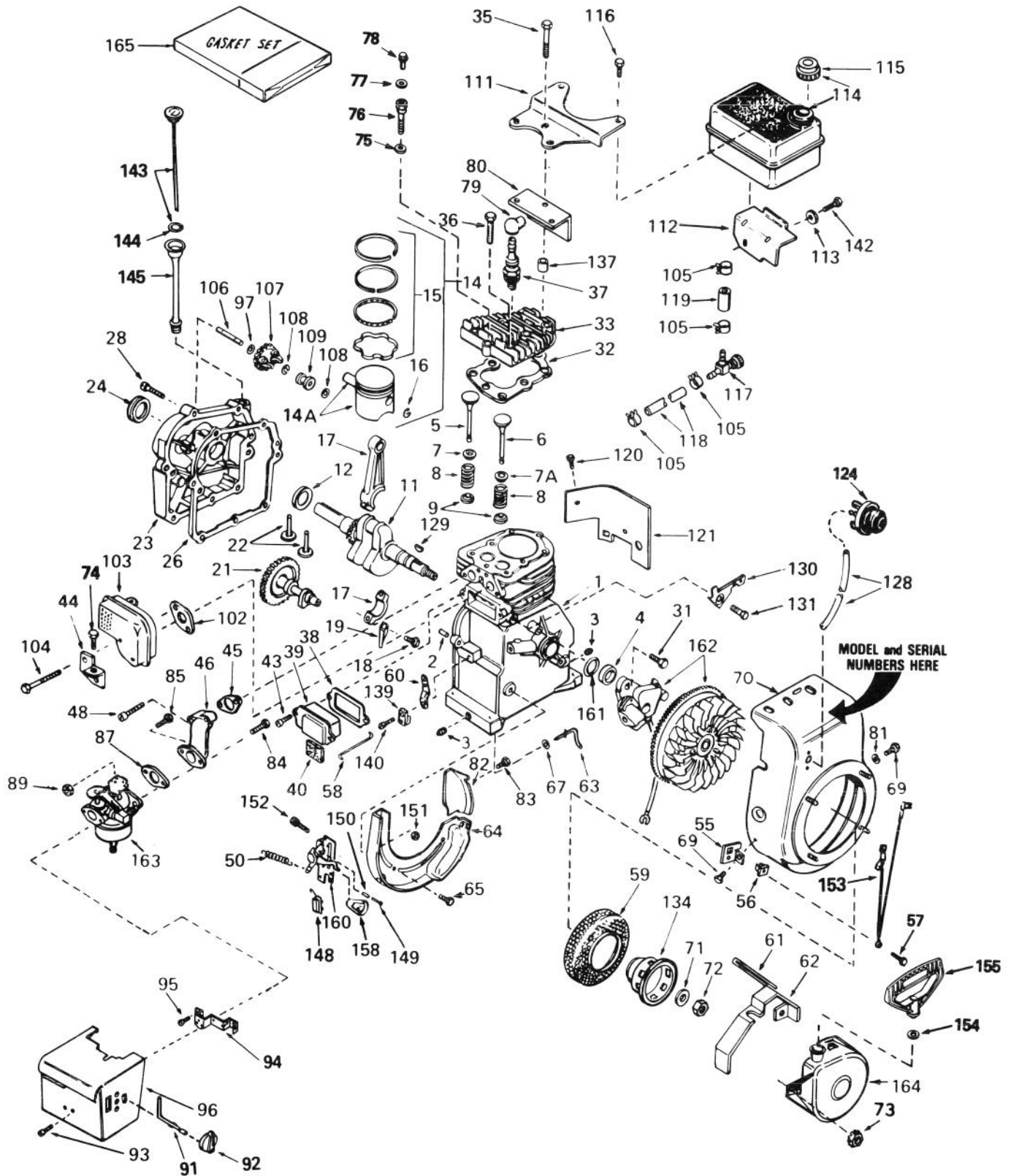
CARBURETOR NO. 632107

Ref. No.	Part No.	Description	No. Used
1	631615	Shaft & Lever Assy. — Throttle	1
2	632016	Spring — Throttle Return	1
3	631036	Shutter — Throttle	1
4	650506	Screw	2
5	630766	Spring — Idle Regulating Screw	2
6	650417	Screw — Idle Regulating	1
7	632108	Shaft & Lever Assy. — Choke	1
8	630735	Spring — Choke Stop	1
9	631815	Shutter — Choke	1
10	*630748	Plug — Welch	1
11	*631027	Plug — Welch	1
12	*631021	Inlet Needle, Seat & Clip Assy. (Incl. Ref. #13)	1
13	631022	Clip — Inlet Needle	1
14	632019	Float — Carburetor	1

Ref. No.	Part No.	Description	No. Used
15	*631024	Shaft — Float	1
16	631867	Bowl — Float	1
21	27110	Gasket — Bowl-to-Body	1
22	*31839	Adjustment Screw Assy. — Main (Incl. Ref. #21, 23, 30 & 31)	1
23	*630740	“O” Ring — Adjustment Screw	2
24	*631078	Screw — Idle Adjustment	1
25	*631028	Gasket — Bowl-to-Body	1
26	631807	Fitting — Fuel Inlet	1
30	630738	Spring — Main Adjustment Screw	1
31	630739	Washer — Flat	2
32	31840	Repair Kit	1

*Items Included in Repair Kit Ref. #32.

ENGINE TECUMSEH MODEL HS50-67246E



ENGINE TECUMSEH MODEL HS50-67246E

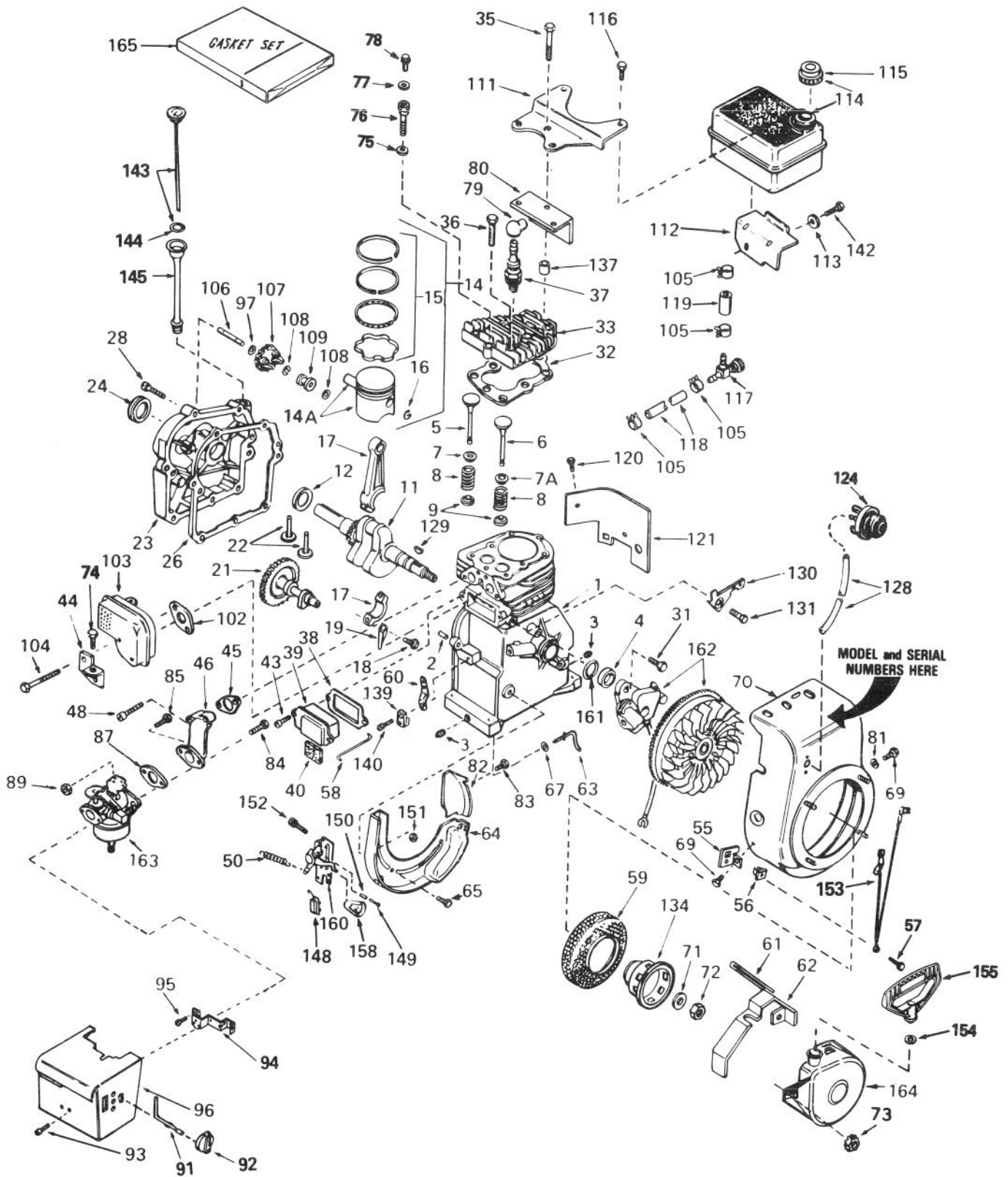
Ref. No.	Part No.	Description	No. Used
1	33674	Cylinder Assy. (Incl. Ref. #2, 3 & 4)	1
2	26727	Pin — Dowel	2
3	27642	Plug — Sq. Hd. (Oil Drain)	2
4	32600	Seal — Oil	1
5	32644A	Valve — Intake (Std.) (Incl. Ref. #9)	1
5	32645A	Valve — Intake (1/32" oversize) (Incl. Ref. #9)	1
6	29313C	Valve — Exhaust (Std.) (Incl. Ref. #9)	1
6	29315C	Valve — Exhaust (1/32" oversize) (Incl. Ref. #9)	1
7	31671	Cap — Upper Valve Spring (Intake)	1
7A	33678	Cap — Upper Valve Spring (Exhaust)	1
8	31672	Spring — Valve	2
9	31673	Cap — Lower Valve Spring	2
11	34740	Crankshaft Assy.	1
12	32323	Washer — Thrust	1
14	34535	Piston — Pin & Ring Assy. (Std.) (Incl. Ref. #14A, 15 & 16)	1
14	34536	Piston — Pin & Ring Assy. (.010 oversize) (Incl. Ref. #14A, 15 & 16)	1
14	34537	Piston — Pin & Ring Assy. (.020 oversize) (Incl. Ref. #14A, 15 & 16)	1
14A	33562B	Piston & Pin Assy. (Std.) (Incl. Ref. #16)	1
14A	33563B	Piston & Pin Assy. (.010 oversize) (Incl. Ref. #16)	1
14A	33564B	Piston & Pin Assy. (.020 oversize) (Incl. Ref. #16)	1
15	33567	Ring Set — Piston (Std.)	1
15	33568	Ring Set — Piston (.010 oversize)	1
15	33569	Ring Set — Piston (.020 oversize)	1
16	20381	Ring — Piston Pin Retaining	2
17	33661	Rod Assy. — Connecting (Incl. Ref. #18 & 19)	1
18	32610A	Screw — Connecting Rod	2
19	32654	Dipper — Oil	1
21	33158	Camshaft (Compression Release)	1
22	27241	Lifter — Valve	2
23	34674	Cover — Cylinder (Incl. Ref. # 24 & 106)	1
24	27897	Seal — Oil	1
26	*27677	Gasket — Cylinder Cover	1
28	650488	Screw — Hex Hd.	7
31	650489	Screw — Hex Hd.	2
32	*33554	Gasket — Cylinder Head	1

Ref. No.	Part No.	Description	No. Used
33	33016	Head — Cylinder	1
35	650694A	Screw — Hex Flange Hd.	5
36	6021A	Screw — Hex Flange Hd.	2
37	33636	Plug — Spark (Champion J-8 or Equivalent) <i>Except for Canada</i>	1
37	34251	Resistor Spark Plug (Canadian Regulations Require RJ-17LM Resistor Spark Plug)	1
38	*31619	Gasket — Breather	1
39	31337	Breather Assy. (Incl. Ref. #38 & 40)	1
40	31410	Element — Breather	1
43	650128	Screw — Fil. Hd.	2
44	33333	Bracket — Carburetor Cover	1
45	*33673	Gasket — Intake	1
46	33691	Pipe — Intake	1
48	650664	Screw — Fil. Hd.	2
50	31426	Spring — Extension	1
55	34126	Bracket — Grommet Mounting	1
56	28545	Grommet — Plastic	1
57	650643	Screw — Pan Hd. Self-Tap	1
58	32698	Link — Governor-to-Throttle	1
59	33668	Screen — Starter Cup	1
60	31510	Lever — Governor	1
61	32576	Seal — Snow Guard	1
62	34127	Guard — Starter	1
63	31334	Rod — Governor	1
64	†33342	Baffle — Blower Housing	1
65	650561	Screw — Hex Washer Hd.	2
67	28277	Washer — Flat	1
69	29212	Screw — Hex Hd.	2
70	34813	Housing — Blower	1
71	650815	Washer — Belleville	1
72	650816	Nut — Flywheel	1
73	29752	Nut & Lockwasher	4
74	650735	Screw — Hex Hd.	1
75	650691	Washer — Flat	1
76	650818	Screw — Special Hex Hd.	1
77	8345	Washer — Flat	1
78	30688	Screw — Hex Hd.	1
79	610118	Cover — Spark Plug	1
80	33344	Baffle — Heat	1
81	650168	Washer — Flat	1
82	33341	Extension — Baffle	1
83	650701	Screw — Hex Washer Hd. Self-Tapping	1
84	6201	Screw — Hex Hd.	1
85	650601	Screw — Fil. Hd.	1
87	*26756	Gasket — Carburetor	1
89	29752	Nut & Lockwasher	2
91	34582	Rod — Choke	1
92	34585	Knob — Control	1
93	650257	Screw — Pan Hd.	2
94	34583	Bracket — Choke	1
95	28820	Screw — Fil. Hd.	2

*Indicates parts included in Gasket Set, Ref. #165.

† In original production, the speed control assembly is riveted to the blower housing baffle. Replacement speed control assembly includes screws and nuts for mounting. Replacement baffle has threaded holes.

ENGINE TECUMSEH MODEL HS50-67246E (Continued)



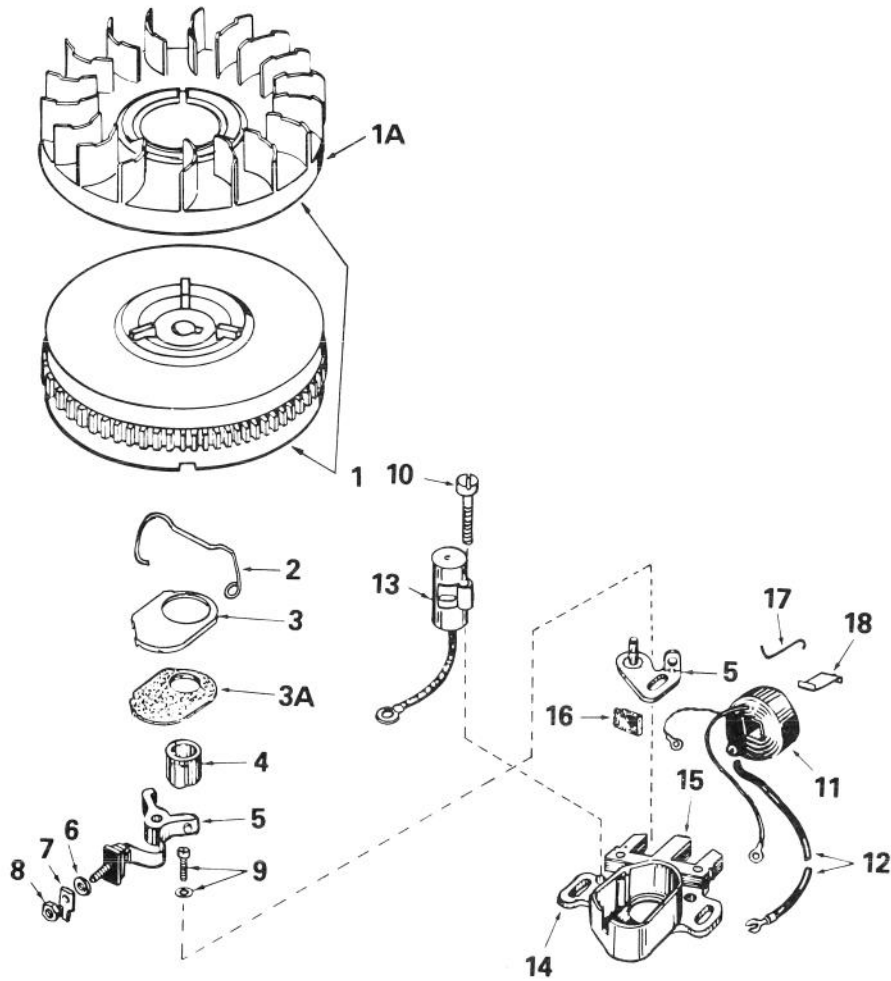
ENGINE TECUMSEH MODEL HS50-67246E (Continued)

Ref. No.	Part No.	Description	No. Used
96	35072	Cover — Carburetor	1
97	30590A	Washer — Flat	1
102	*33670	Gasket — Muffler	1
103	33697A	Muffler	1
104	650327	Screw — Fil. Hd.	2
105	26460	Clamp — Fuel Line	4
106	30574	Shaft, Mechanical Governor	1
107	30591	Gear Assy. — Governor (Incl. Ref. #97)	1
108	29193	Ring — Retaining	2
109	30588A	Spool — Governor	1
111	28371B	Bracket — Fuel Tank Mounting	1
112	34182	Bracket — Fuel Tank Mounting	1
113	650675	Washer — Flat	1
114	34711	Tank Assy. — Fuel (Incl. Ref. #115)	1
115	34210	Cap — Fuel Tank	1
116	650665	Screw — Hex Washer Hd. Self Tap	2
117	32961	Valve — Fuel Shut-Off	1
118	30705	Line — Fuel	1
119	29774	Line — Fuel	1
120	650128	Screw — Fil. Hd.	1
121	29745	Extension — Blower Housing	1
124	34814	Primer Assy.	1
128	32180C	Line — Primer	1
129	610961	Key — Flywheel	1
130	34212	Bracket — Hold Down	1
131	30200	Screw — Hex Washer Hd. Self Tap	1

Ref. No.	Part No.	Description	No. Used
134	34694	Cup — Starter	1
137	28212	Spacer — Tank Bracket	2
139	31335	Clamp — Governor Lever	1
140	650548	Screw — Hex Washer Hd.	1
142	650805	Screw — Hex Hd. w/Belleville Washer	1
143	34676	Dipstick — Oil (Incl. Ref. #144)	1
144	33590	O-Ring	1
145	33893A	Tube — Oil Fill	1
148	610973	Terminal Assy.	1
149	650549	Screw — Fil. Hd.	1
150	31342	Spring — Compression	1
151	†30322	Locknut — Hex "Keps"	2
152	†650139	Screw — Fil. Hd.	2
153	34241	Wire — Ground	1
154	27261	Washer	1
155	590574	Handle — Mitten Grip Starter	1
158	32410	Knob — Speed Control	1
160	†33858A	Bracket Assy. — Control (Incl. Ref. #148 thru 152)	1
161	33876	Gasket — Stator	1
162	611030	Magneto (The complete magneto in not available as an assembly. The magneto number is shown for reference purposes only. Order component parts individually, as shown in parts list.)	1
163	632107	Carburetor (Incl. Ref. #87)	1
164	590576	Starter Assy. — Rewind	1
165	33683	Gasket Set	1

*Indicates parts included in Gasket Set, Ref. #165.

† In original production, the speed control assembly is riveted to the blower housing baffle. Replacement speed control assembly includes screws and nuts for mounting. Replacement baffle has threaded holes.

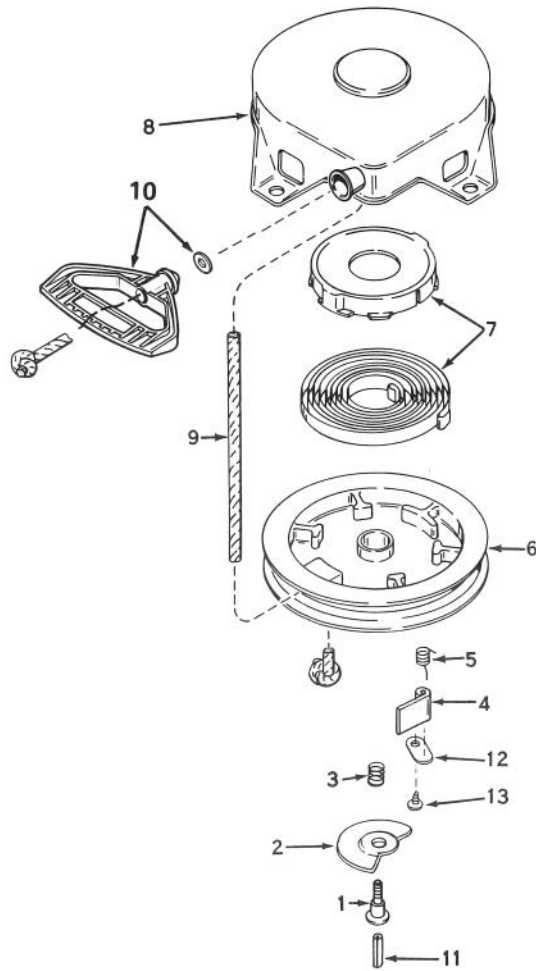


MAGNETO NO. 611030

Ref. No.	Part No.	Description	No. Used
1	611029	Flywheel (Incl. Ref. #1A)	1
1A	610933	Fan — Blower	1
2	30551	Spring — Breaker Box Dust Cover	1
3	610947	Cover — Dust	1
3A	610955	Gasket — Dust Cover	1
4	30992	Cam — Breaker	1
5	30547A	Contact Assembly — Breaker	1
6	610385	Washer — Terminal	1
7	33356	Tab — Ground Terminal	1
8	610408	Nut — Terminal	1

Ref. No.	Part No.	Description	No. Used
9	29181	Screw & Washer — Breaker	1
10	610593	Screw — Condenser	1
11	30560A	Coil Assy. (Incl. Ref. #12)	1
12	30554	Wire — Lead	1
13	30548B	Condenser	1
14	30545	Core & Plate	1
15	30561B	Stator Assy. (Incl. Ref. #2, 3, 3A, 5 thru 14, 16 & 17)	1
16	30549	Felt — Cam Wiper	1
17	31311	Clip — Coil Locking	1

*The complete magneto is not available as an assembly. The magneto number is shown for reference purposes only. Order component parts individually as shown in part list.



REWIND STARTER NO. 590576

Ref. No.	Part No.	Description	No. Used
1	590409A	Screw	1
2	590474	Cam — Dog	1
3	590411	Spring — Brake	1
4	590148	Dog — Starter	1
5	590475	Spring — Dog	1
6	590478	Pulley	1
7	590414	Spring & Keeper Assy.	1

Ref. No.	Part No.	Description	No. Used
8	590577	Housing Assy. Starter (Incl. Ref. #1)	1
9	590451A	Rope — Starter	1
10	590574	Handle — Mitten Grip (Not Included With Starter)	1
11	590459	Pin — Centering	1
12	590476	Retainer — Dog	1
13	590477	Screw	1

PRODUCT CHANGES

In an effort to make improvements available to TORO owners as quickly as possible, minor changes are incorporated into Toro's products from time to time that do not become immediately shown in the Parts Catalog. If such a change apparently has been made in your unit, which is not reflected in your manual, see your TORO Distributor or his Authorized TORO Service Dealer for information and part numbers.

IDENTIFICATION AND ORDERING

MODEL AND SERIAL NUMBERS

The Snowthrower has two identification numbers: a model number and a serial number. The two numbers are stamped on a decal which is located on back of engine mounting plate. In any correspondence concerning the Snowthrower, supply model and serial numbers to assure that correct information and replacement parts are obtained.

To order replacement parts from an Authorized TORO Service Dealer, supply the following information:

1. Model and serial numbers of the Snowthrower.
2. Part number, description, and quantity of part(s) desired.

Note: Do not order by reference number if a parts catalog is being used; use the PART NUMBER.

The Toro Promise

A TWO YEAR LIMITED WARRANTY

The Toro Company promises to repair any TORO Product if defective in materials or workmanship. The following time periods from the date of purchase apply:

Residential Product 2 Years
Residential Products Used Commercially..... 45 days

The costs of parts and labor are included, but the customer pays the transportation costs. Just return any residential product to an Authorized TORO Service Dealer or TORO Distributor.

Should you feel your TORO Product is defective and wish to rely on The Toro Promise, the following procedure is recommended:

1. Contact any Authorized TORO Service Dealer, TORO Master Service Dealer, or TORO Distributor (the Yellow Pages of your telephone directory is a good reference source).
2. He will either instruct you to return the product to him or recommend another Authorized TORO Service outlet which might be more convenient.
3. Bring the product along with your original sales slip, or other evidence of purchase date, to the service dealer.
4. The servicing dealer will inspect the unit, advise you whether the product is defective and, if so, make all repairs necessary to correct the defect without extra charge to you.

If for any reason you are dissatisfied with the dealer's analysis of the defect or the service performed, you may contact us.

Write:
TORO Consumer Service Department
8111 Lyndale Avenue South
Minneapolis, Minnesota 55420

The above remedy of product defects through repair by an Authorized TORO Service Dealer is the purchaser's sole remedy for any defect.

THERE IS NO OTHER EXPRESS WARRANTY. ALL IMPLIED WARRANTIES OF MERCHANTABILITY AND

FITNESS FOR USE ARE LIMITED TO THE DURATION OF THE EXPRESS WARRANTY.

Some states do not allow limitations on how long an implied warranty lasts, so the above limitation may not apply to you.

This warranty applies only to parts or components which are defective and does not cover repairs necessary due to normal wear, misuse, accidents, or lack of proper maintenance. Regular, routine maintenance of the unit to keep it in proper operating condition is the responsibility of the owner.

All warranty repairs reimbursable under The Toro Promise must be performed by an Authorized TORO Service Dealer using Toro approved replacement parts.

Repairs or attempted repairs by anyone other than an Authorized TORO Service Account are not reimbursable under The Toro Promise. In addition, these unauthorized repair attempts may result in additional malfunctions, the correction of which is not covered by warranty.

THE TORO COMPANY IS NOT LIABLE FOR INDIRECT, INCIDENTAL OR CONSEQUENTIAL DAMAGES IN CONNECTION WITH THE USE OF THE PRODUCT INCLUDING ANY COST OR EXPENSE OF PROVIDING SUBSTITUTE EQUIPMENT OR SERVICE DURING PERIODS OF MALFUNCTION OR NON-USE.

Some states do not allow the exclusion or limitation of incidental or consequential damages, so the above limitation or exclusion may not apply to you.

This warranty gives you specific legal rights, and you may also have other rights which vary from state to state.

COUNTRIES OTHER THAN THE UNITED STATES OR CANADA

Customers who have purchased TORO products exported from the United States or Canada should contact their TORO Distributor (Dealer) to obtain guarantee policies for your country, province or state. If for any reason

you are dissatisfied with your Distributor's service or have difficulty obtaining guarantee information, contact the TORO importer. If all other remedies fail, you may contact us at The Toro Company.