



## 66in Rake-O-Vac<sup>®</sup> Sweeper

Model No. 07050—210000201 and Up

### Parts Catalog

#### Ordering Replacement Parts

To order replacement parts, please supply: the part number, the quantity, and the description of each part desired.

#### Understanding Reference Numbers

Each identified part in an illustration has a reference number. The reference number for a part also appears in the parts list, along with other information about the part.

This catalog uses two special reference number formats, one to indicate parts in a service assembly and another to indicate the quantity of a given part in an illustration.

#### Service Assembly Reference Numbers

Parts in service assemblies have reference numbers in the form **a:b**. The **a** represents the reference number of the entire service assembly and the **b** represents a sequential number unique to each part within the service assembly.

For example, a wheel assembly might be identified by reference number **6**, the tire by **6:1**, the valve by **6:2**, and the wheel by **6:3**. When you order the assembly identified by reference number **6**, you receive all parts identified by reference numbers **6:1**, **6:2**, and **6:3**. However, you may also order any part individually.

Reference numbers of this type appear in illustrations and in part lists.

#### Reference Numbers Indicating Quantity

In an illustration, if a reference number indicates more than one part, the reference number has the form **nX y**. The **n** represents the quantity of the part, the **X** is the multiplication symbol, and the **y** represents the reference number.

For example, in an illustration, the reference number **2X 37** means that two of the parts identified by reference number **37** are indicated.

## Contents

Description	Page	Description	Page
Frame Assembly .....	3	Ignition and Electrical Assembly	
Jackshaft and Lifting Mechanism .....	4	Kohler CH23S-76546 .....	19
Blower and Throat Assembly .....	6	Blower Housing and Baffle Assembly	
Hopper and Rear Tailgate Assembly .....	8	Kohler CH23S-76546 .....	20
Flex-Tip Reel and Trailing Arm .....	9	Starting System Assembly	
Jack Assembly .....	11	Kohler CH23S-76546 .....	21
Engine Assembly .....	12	Fuel System Assembly	
Clutch Assembly No. 107-1050 .....	13	Kohler CH23S-76546 .....	22
Clutch Assembly No. 107-1070 .....	14	Engine Control Assembly	
Crankshaft and Crankcase Assembly		Kohler CH23S-76546 .....	23
Kohler CH23S-76546 .....	15	Air Intake and Filtration Assembly	
Oil Pan and Lubrication Assembly		Kohler CH23S-76546 .....	24
Kohler CH23S-76546 .....	16	Exhaust Assembly	
Head, Valve and Breather Assembly		Kohler CH23S-76546 .....	25
Kohler CH23S-76546 .....	17		

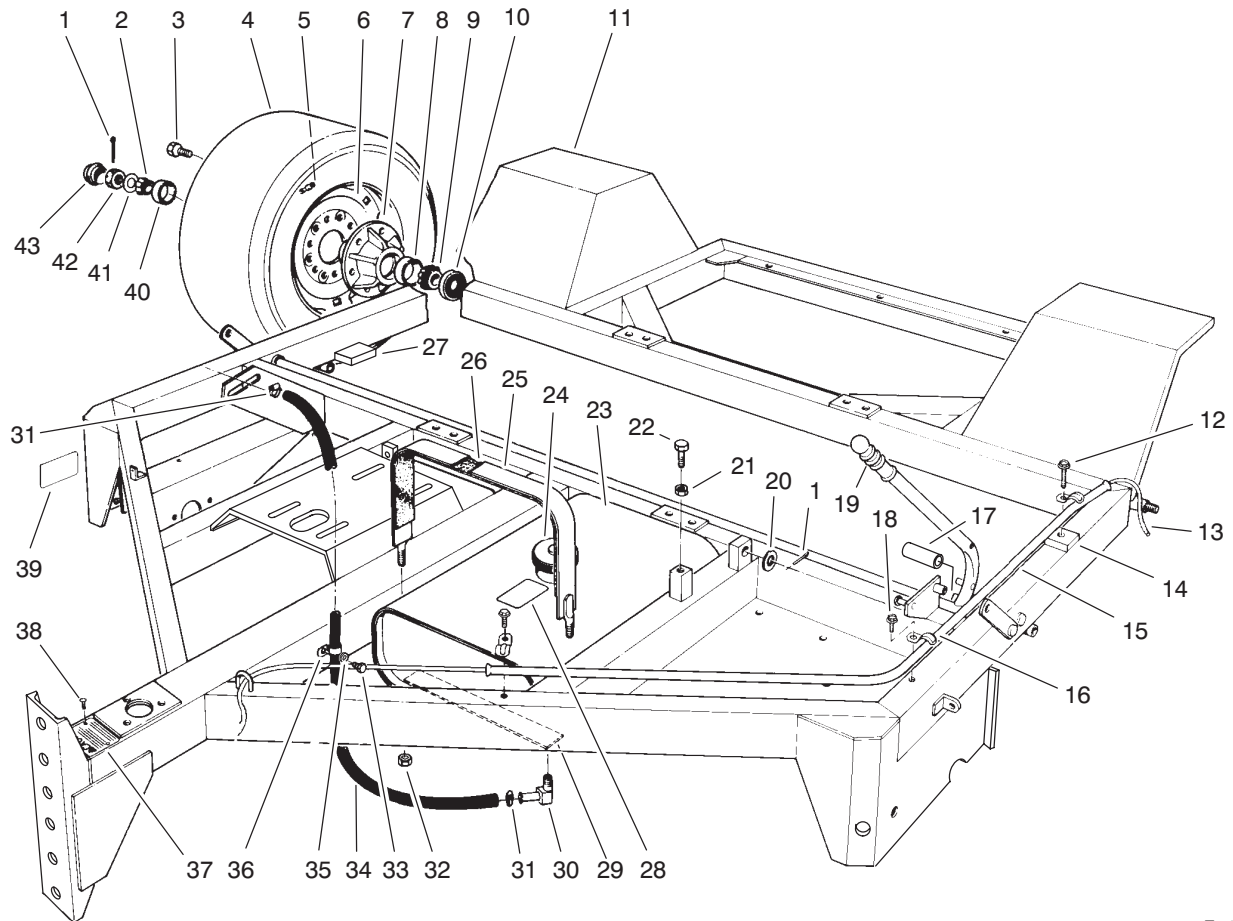
## Accessories

Description	Model / Part No.	Description	Model / Part No.
Hard Surface Brush Kit .....	07162	Thatching Reel Kit .....	07178
Flex-Tip Reel Kit .....	07164		

## Part Description Abbreviations

Part descriptions in this catalog may include the following abbreviations.

Abbreviation	Meaning	Abbreviation	Meaning
AR .....	as required	HYD .....	hydraulic
ASM .....	assembly	INC .....	incorporated
CARR .....	carriage	LH .....	left hand
DEG .....	degrees	NI .....	nylon insert
FH .....	flat head	PPH .....	Phillips pan head
GA .....	gauge	PTH .....	Phillips truss head
HF .....	hex flange	PTO .....	power take off
HH .....	hex head	RH .....	right hand
HHF .....	hex head flange	SFH .....	slotted fillister head
HLH .....	hex lag head	SHH .....	slotted hex head
HJ .....	hex jam	SQH .....	square head
HOC .....	height-of-cut	SHWH .....	slotted hex washer head
HS .....	hex socket	SPH .....	slotted pan head
HSBH .....	hex socket button head	SRH .....	slotted round head
HSFH .....	hex socket flat head	STD .....	standard
HSH .....	hex socket head	TAP .....	self tapping
HWH .....	hex washer head	TTH .....	Torx truss head
HWHTF .....	hex washer head thread forming	WH .....	wing head

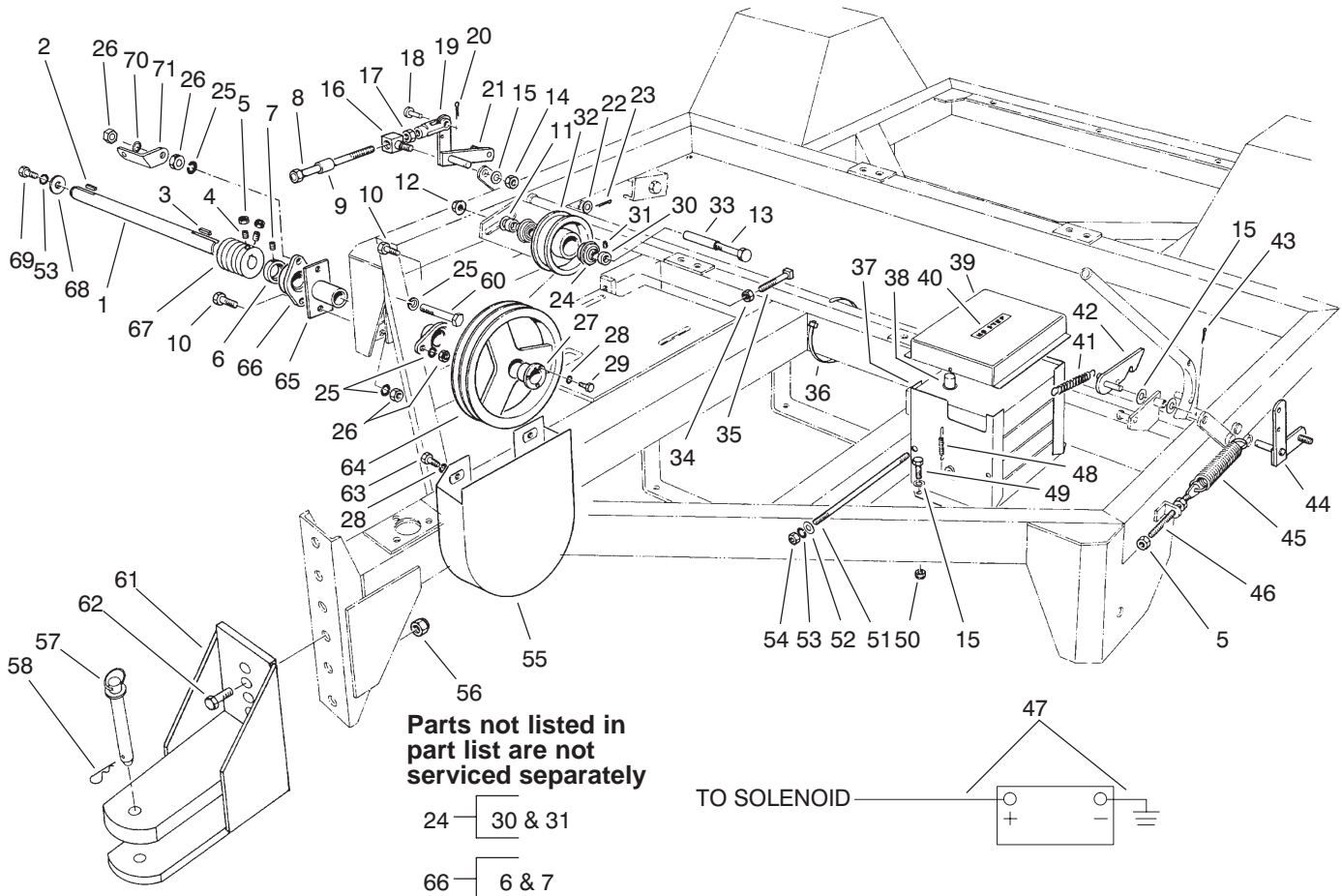


T-0006

## Frame Assembly

Ref. No.	Part No.	Qty.	Description
1	3272-17	3	Pin-Cotter
2	254-62	2	Cone-Bearing
3	217-103	12	Bolt-Wheel
4	93-0181	2	Tire
5	232-27	2	Stem-Valve
6	93-0182	2	Wheel Asm
7	242-54	2	Hub (Includes 8, 40)
8	254-66	2	Cup-Bearing
9	254-65	2	Cone-Bearing
10	253-127	2	Seal
11	93-4009-01	1	Main Frame
12	32104-96	1	Screw-Self Tapping
13	20-9580	1	Rope
14	13-6910-01	1	Spacer-Guide, Rope
15	13-6890-01	1	Guide-Rope
16	2412-40	3	Clamp-Conduit
17	3-3107	1	Hose
18	32104-95	2	Screw-Self Tapping
19	235-15	1	Grip-Handle
20	3256-28	2	Washer-Flat
21	3218-3	1	Nut-Jam
22	323-8	1	Screw-HH
23	13-3930-01	1	Tank-Gas
24	222-8	1	Cap-Gas

Ref. No.	Part No.	Qty.	Description
25	13-3960	2	Strap Asm (Includes 26)
26	13-3970	2	Strip-Felt
27	93-7709	1	Pad
28	53-4420	1	Decal-Gas
29	13-3970	2	Strip-Felt
30	304-75	1	Fitting-Tube
31	2412-108	2	Clamp-Hose
32	3296-29	4	Nut-Lock
33	32104-109	1	Screw
34	94-4522	1	Hose-Fuel Line
35	3256-22	1	Washer-Flat
36	2412-93	1	Clamp
37	13-7460	1	Plate-Caution, Hitch
38	3290-55	4	Rivet-Pop
39	67-5360	1	Decal
40	254-61	2	Cup-Bearing
41	3256-29	2	Washer-Flat
42	32136-1	2	Nut-Slotted
43	217-111	2	Cap-Hub



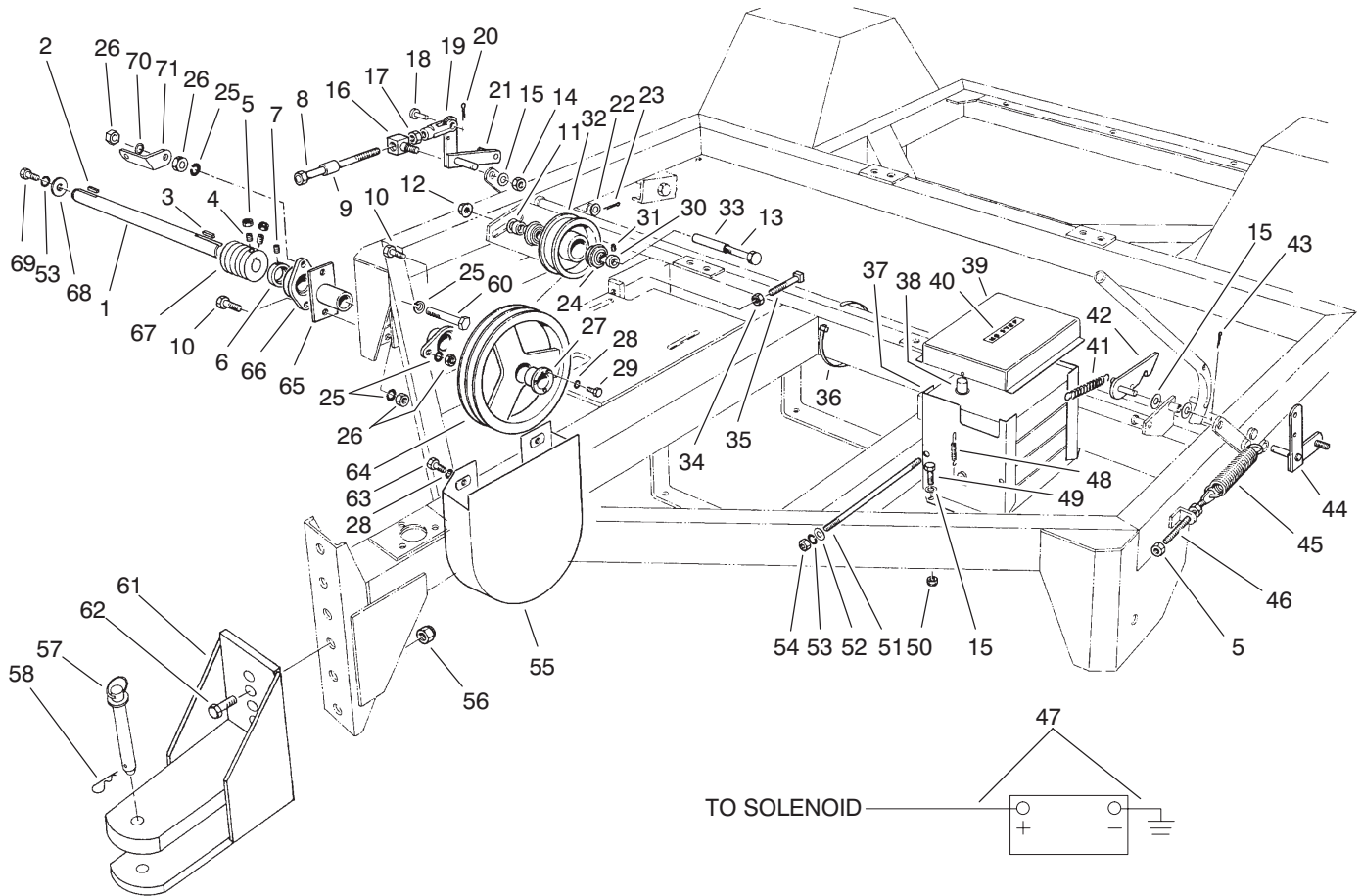
T-0010

## Jackshaft and Lifting Mechanism

Ref. No.	Part No.	Qty.	Description
1	93-4032	1	Shaft—Jack
2	68-3220	1	Key—Square
3	79-2000	1	Key—Square
4	3243-6	2	Screw—Set
5	3218-3	6	Nut—Jam
☆6		2	Collar—Locking
☆7		2	Screw—Set
8	13-6260	2	Screw—Adjustment
9	13-5520	2	Spacer
10	324-7	3	Screw—HH
11	3256-26	1	Washer—Flat
12	32128-49	1	Nut—HFH
13	325-20	1	Screw—HH
14	32153-2	2	Nut—Lock
15	3256-24	7	Washer—Flat
16	13-0100	2	Block—Pivot
17	3219-3	2	Nut—Hex
18	283-2	2	Pin—Clevis
19	282-22	2	Clevis
20	3272-10	2	Pin—Cotter
21	93-4440	1	Bell Crank—Lift, RH
22	3256-28	2	Washer—Flat
23	3272-22	2	Pin—Cotter
24	56-6210	2	Bearing
25	3253-6	5	Washer—Lock
26	3217-8	5	Nut—Lock

Ref. No.	Part No.	Qty.	Description
27	13-2680	1	Bushing (Includes 28-29)
28	3253-4	5	Washer—Lock
29	322-7	3	Screw—HH
☆30		2	Collar—Locking
☆31		2	Screw—Set
32	13-0600	1	Pulley—Idler (Includes 24)
33	93-7706	1	Tube—Spacer
34	3218-5	2	Nut—Hex
35	3244-21	2	Screw—Set
36	250-5	2	Strap—Locking
37	3-5967	2	Support—Battery
38	55-7290	1	Battery
39	3-3175	1	Cover—Battery
40	61-5950	1	Decal
41	13-0480	1	Spring
42	13-3990-01	1	Handle—Trip
43	3272-10	1	Pin—Cotter
44	13-5500	1	Bell Crank—Lift, LH
45	13-0050	2	Spring
46	13-5530	2	Rod—Adjustment, Spring
47	13-6790	2	Cable—Battery

☆ Not serviced

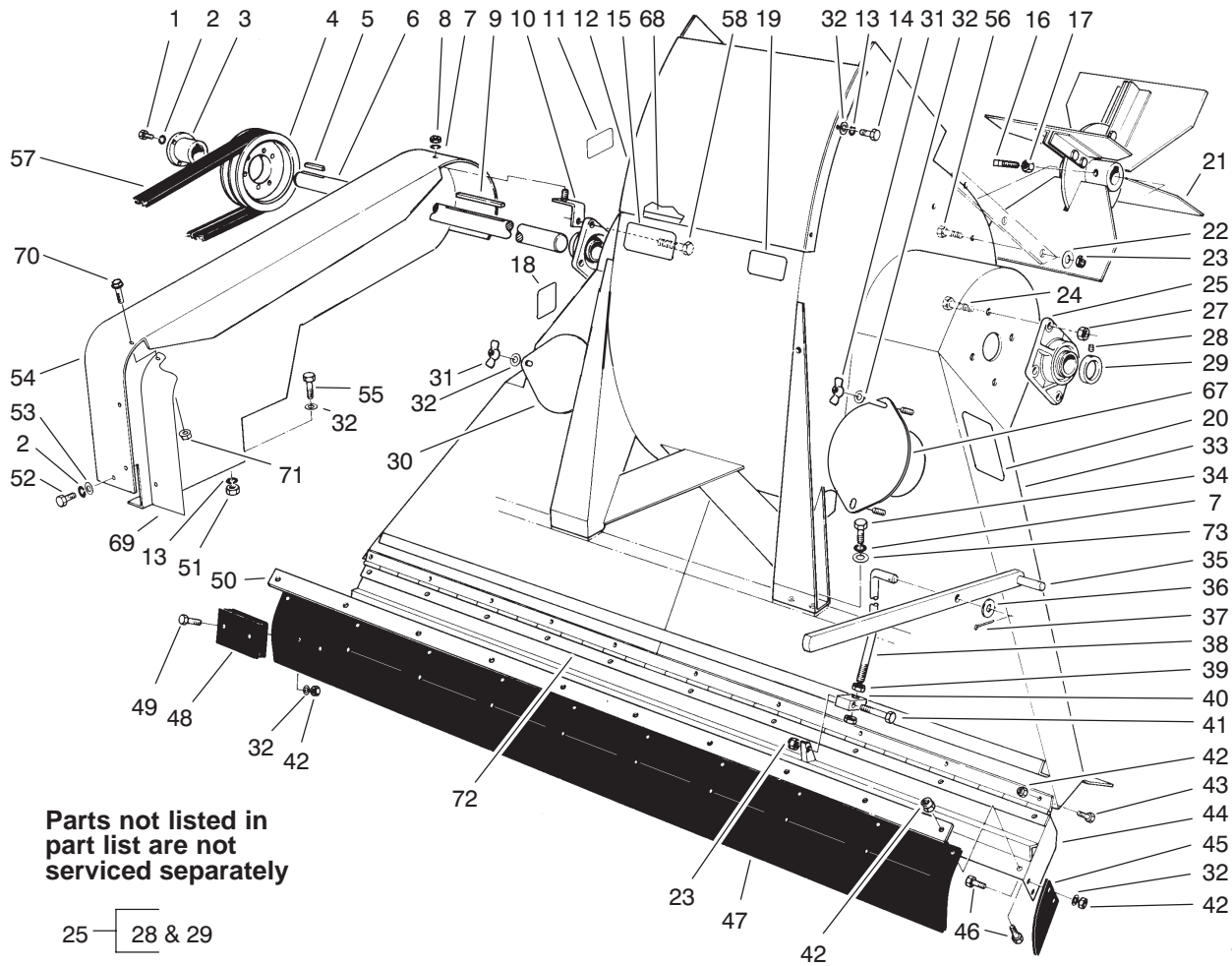


T-0010

## Jackshaft and Lifting Mechanism (Continued)

Ref. No.	Part No.	Qty.	Description
48	3-8135	2	Spring
49	323-5	4	Screw-HH
50	3296-39	4	Nut-Lock
51	5-0678	2	Rod-Clamp, Battery
52	3256-22	4	Washer-Flat
53	3253-3	5	Washer-Lock
54	3217-5	4	Nut-Hex
55	13-4490	1	Guard-Sheave
56	3296-53	2	Nut-Lock
57	13-6200	1	Pin-Hitch (Includes 58)
58	3290-343	1	Pin-Hair Cotter
60	324-10	1	Screw-HH
61	93-4409	1	Tongue
62	327-6	2	Screw-HH
63	322-7	2	Screw-HH
64	13-2670-01	1	Sheave
65	63-5210-01	1	Spindle-Driveside
66	56-6230	2	Bearing
67	93-4033-01	1	Pulley-Driver
68	13-3710	1	Washer
69	321-4	1	Screw-HH
70	3290-211	1	Washer-Spring
71	93-4438	1	Bracket-Belt Guard

Ref. No.	Part No.	Qty.	Description



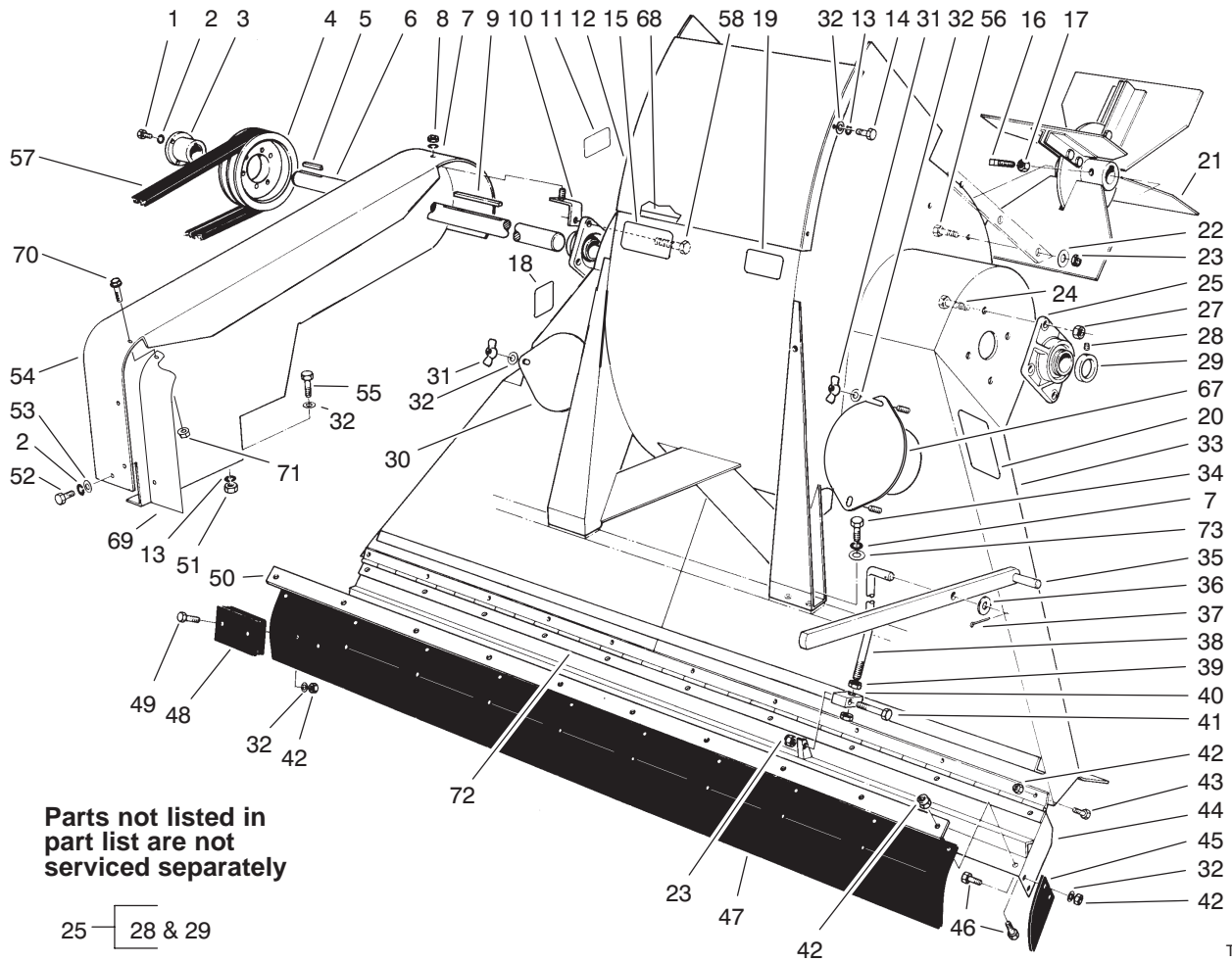
T-3266

## Blower and Throat Assembly

Ref. No.	Part No.	Qty.	Description
1	322-7	3	Screw-HH
2	3253-4	4	Washer-Lock
3	13-2970	1	Bushing (Includes 1-2)
4	13-2800	1	Pulley
5	13-2240	1	Key-Square
6	13-3790	1	Shaft-Fan
7	3253-21	9	Washer-Lock
8	3217-7	1	Nut-Hex
9	13-2810	1	Key-Square
10	13-3350	1	Mounting Bracket
11	67-5360	1	Decal
12	13-3850-01	1	Plate-Blower Access
13	3253-3	6	Washer-Lock
14	321-4	4	Screw-HH
15	13-6410	1	Decal
16	3244-14	4	Screw-Set, Square Head
17	3218-5	4	Nut-Jam
18	92-8309	1	Decal-Warning
19	93-7307	1	Decal-Warning
20	93-4041	1	Decal-Operator Instructions
21	13-3420	1	Fan ASM
22	3256-24	6	Washer-Flat
23	3296-39	7	Nut-Lock

Ref. No.	Part No.	Qty.	Description
24	325-6	7	Screw-HH
25	56-6220	2	Bearing
27	32153-5	8	Nut-Lock
☆28		2	Screw-Set
☆29		2	Collar-Locking
30	13-1420-01	1	Cover-Inspection
31	32103-12	4	Nut-Wing
32	3256-22	32	Washer-Flat
33	13-6280-01	1	Blower (Includes 11-15, 18-20, 30-32, 67-68)
34	323-6	8	Screw-HH
35	13-6390-01	1	Handle-Flap
36	3256-27	1	Washer-Flat
37	3272-12	1	Pin-Cotter
38	13-6360	1	Rod-Lift
39	3218-6	2	Nut-Jam
40	13-0330	1	Block-Pivot
41	323-9	1	Screw-HH
42	3296-42	52	Nut-Lock
43	321-3	20	Screw-HH
44	95-3112-01	1	Flap-Lower
45	13-3130	2	Flap-End
46	321-5	14	Screw-HH

☆ Not serviced

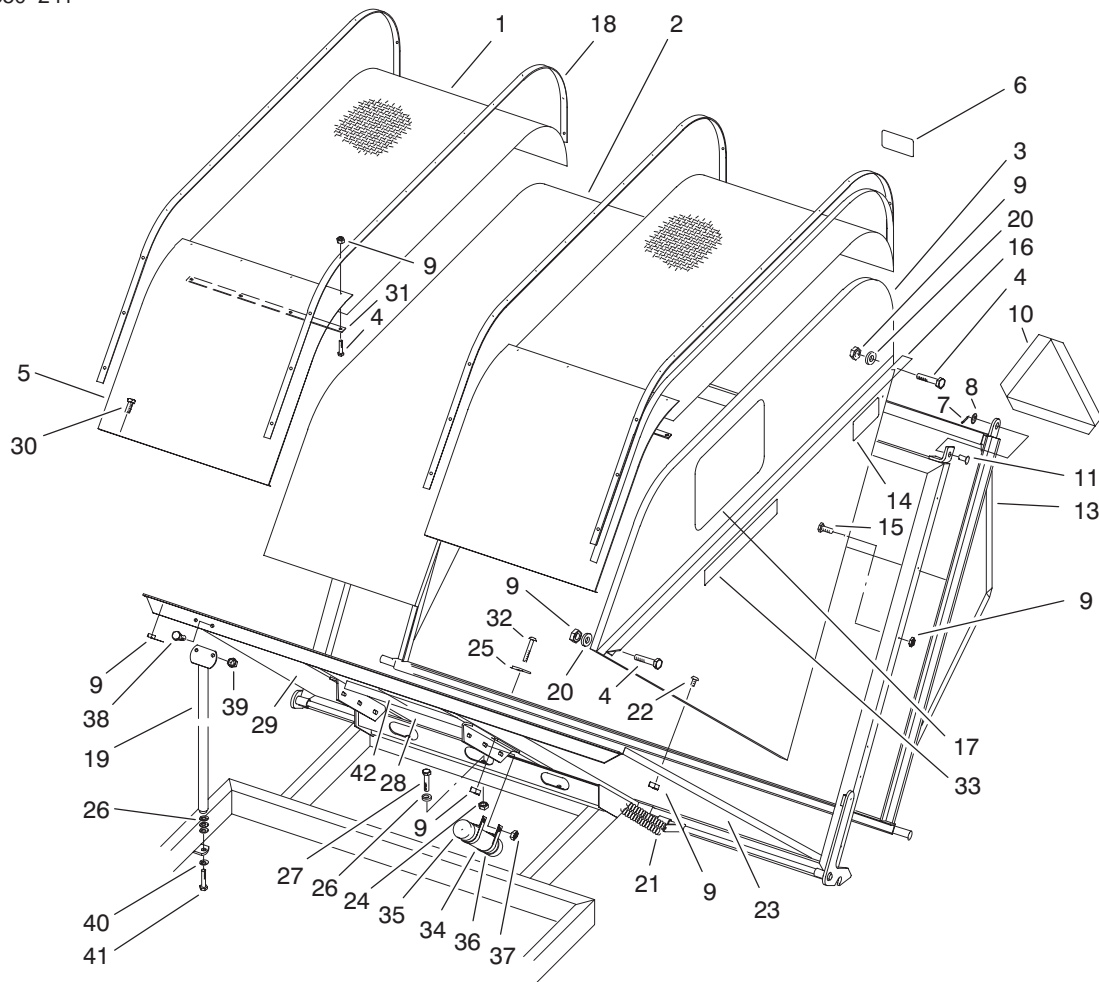


T-3266

### Blower and Throat Assembly (Continued)

Ref. No.	Part No.	Qty.	Description
47	13-4700	1	Flap (Includes 23, 42, 48-49)
48	13-4560-03	18	Weight-Flap
49	321-8	18	Screw-HH
50	13-1390-01	1	Retainer-Flap
51	3217-5	2	Nut-Hex
52	322-1	1	Screw-HH
53	3256-23	1	Washer-Flat
54	13-4800-01	1	Guard-Belt
55	321-4	2	Screw-HH
56	323-7	6	Screw-HH
57	93-0183	1	Belt
58	325-7	1	Screw-HH
67	93-4020-01	1	Cover-Inspection
68	93-7708	1	Strip-Sealing
69	93-7707	1	Shield-Belt Guard
70	3234-33	2	Screw-HH
71	32128-32	2	Nut-Lock, Flange
72	95-3114-01	1	Hinge-Continuous
73	80-6990	8	Washer-Hardened

Ref. No.	Part No.	Qty.	Description



T-0007

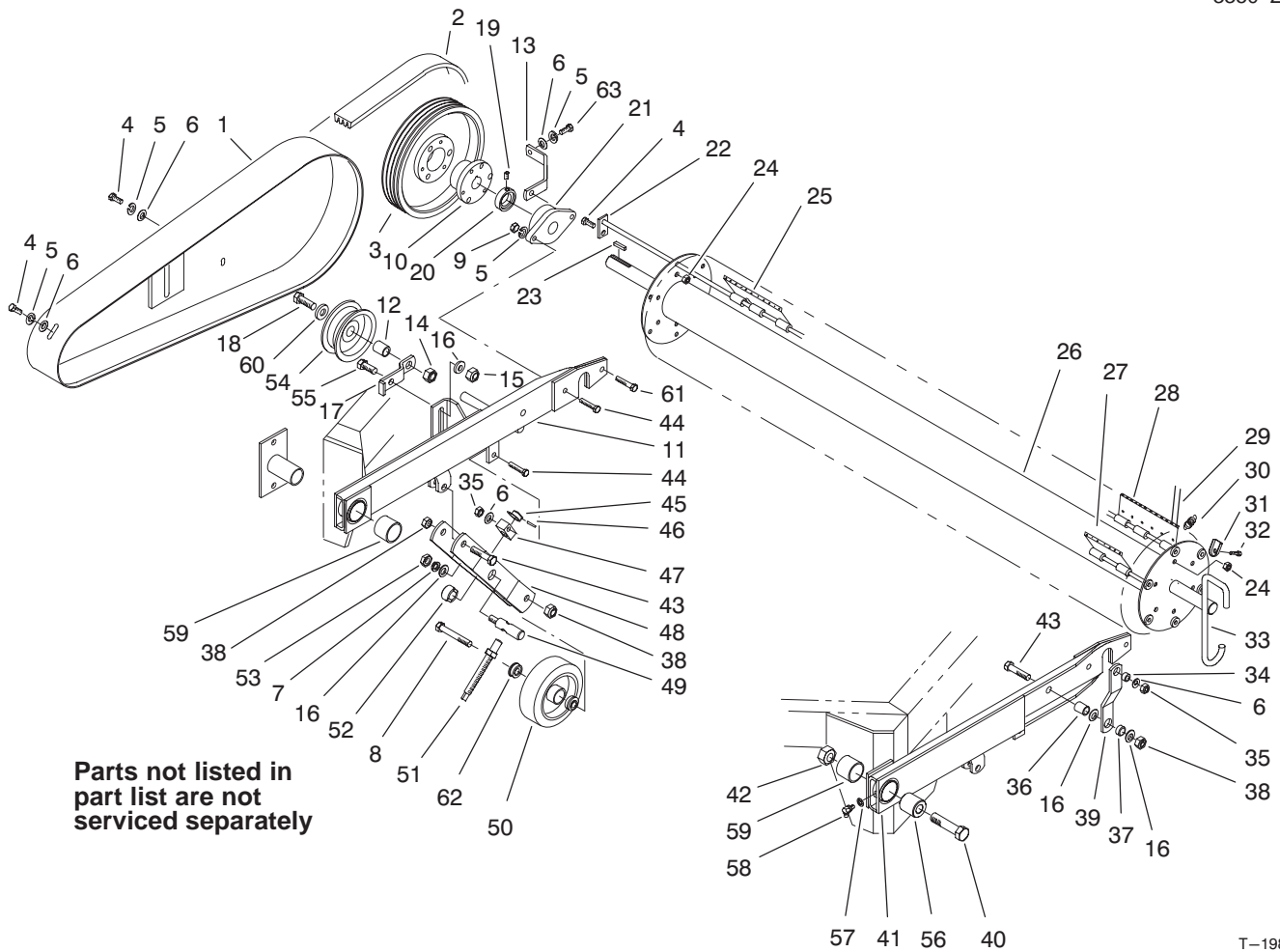
## Hopper and Rear Tailgate Assembly

Ref. No.	Part No.	Qty.	Description
1	94-9141-01	2	Screen-Top
2	94-9135-01	1	Panel-Top
3	94-9129-01	1	Panel-LH
*	94-9133-01	1	Panel-RH
4	3234-33	96	Screw-HFH
5	94-9128-01	2	Panel-Front
6	13-6760	1	Decal-Caution
7	3272-12	3	Pin-Cotter
8	3256-27	3	Washer-Flat
9	32128-32	193	Nut-Lock
10	13-2930	1	Decal-Slow Moving Vehicle
11	283-39	3	Pin-Clevis
13	93-4003-01	1	Gate
14	13-7430	1	Decal-Warning
15	3229-7	50	Bolt-Carriage
16	13-7340-01	1	Stiffener-LH
*	13-7330-01	1	Stiffener-RH
17	67-7920	2	Decal-Toro
18	93-4031-01	4	Strap-Hopper, Top
19	93-4042-01	2	Support
20	3256-55	28	Washer-Flat
21	12-8810	2	Spring
22	32122-42	36	Screw-Machine
23	94-9139-01	1	Panel-Bottom, LH
24	3296-23	3	Nut-Lock

Ref. No.	Part No.	Qty.	Description
25	13-3710	2	Washer-Flat
26	3256-26	9	Washer-Flat
27	325-6	3	Screw-HH
28	94-9138-01	1	Panel-Bottom, (Middle)
29	94-9137-01	1	Panel-Bottom, RH
30	3250-32	9	Screw-Phillips Pan Head
31	93-4030-01	2	Strap-Hopper, Front
32	3258-165	2	Screw-Round Head
33	93-0184	2	Decal-Hopper
34	65-5871	1	Tube-Manual
35	65-5890	2	Cap-Tube
36	2412-102	2	R-Clamp
37	32153-2	2	Nut-Lock
38	323-6	4	Screw-HH
39	3296-39	4	Nut-Lock
40	3253-7	2	Washer-Lock
41	325-7	2	Screw-HH
42	93-7708	1	Strip-Sealing
*	92-2409	1	Hopper ASM (Includes 1-9, 11-18, 20, 22-23, 25, 28-33, 42)

\*Not Illustrated



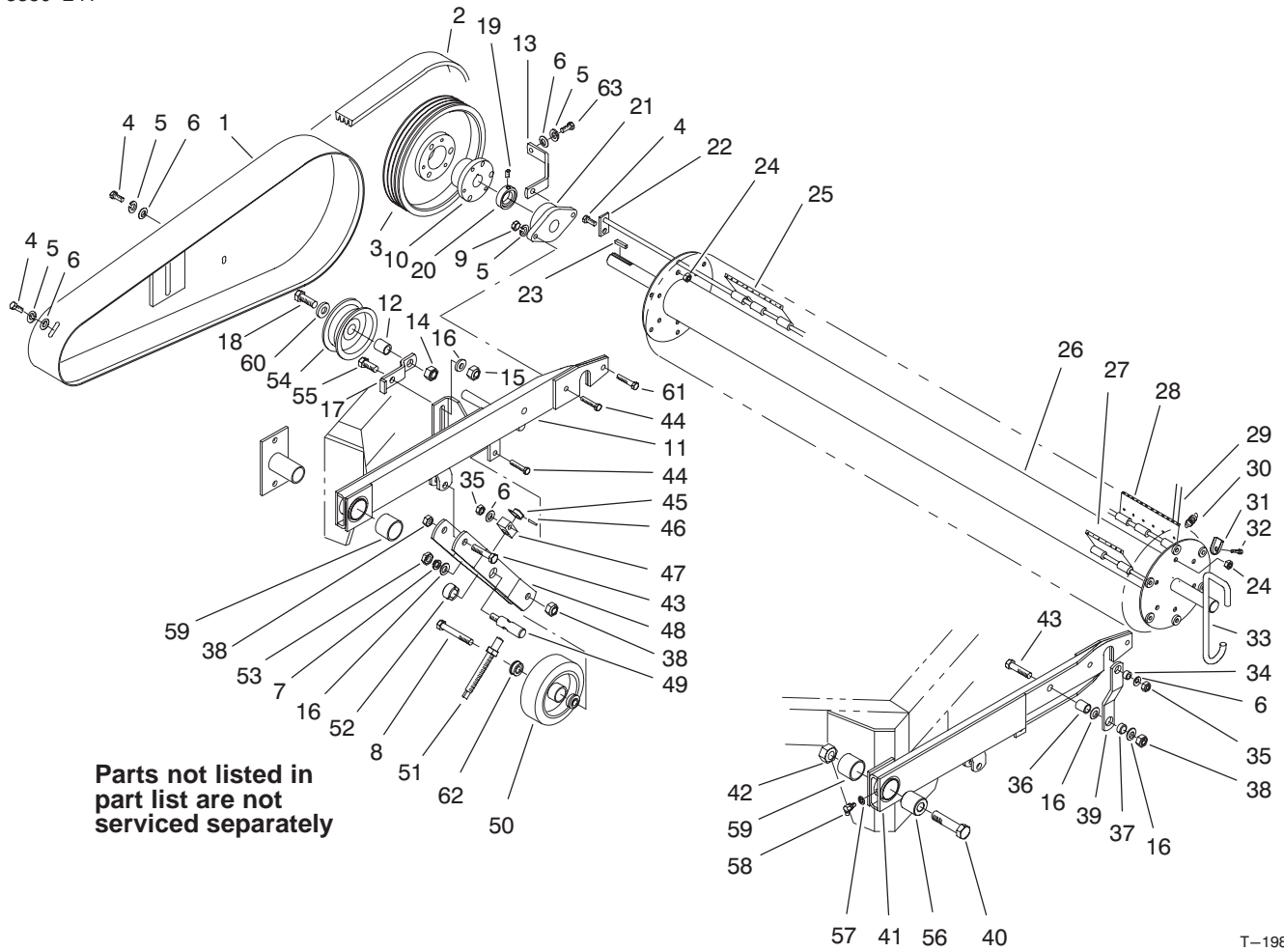


## Flex-Tip Reel and Trailing Arm

Ref. No.	Part No.	Qty.	Description
1	93-4422-01	1	Guard-Belt
2	93-4034	1	V-Belt
3	93-4001-01	1	Pulley-4 Groove
4	323-4	6	Screw-HH
5	3253-21	7	Washer-Lock
6	3256-24	7	Washer-Flat
7	3253-7	2	Washer-Lock
8	325-14	2	Screw-HH
9	3217-7	4	Nut-Hex
10	13-2680	1	Bushing
11	93-4445	1	Trailing Arm-RH (Includes 59)
12	93-4428	1	Spacer-Pulley
13	93-4434	1	Support Bracket
14	3296-53	1	Nut-Lock
15	3296-23	1	Nut-Lock
16	3256-26	7	Washer-Flat
17	93-4433-01	1	Pulley Bracket
18	327-6	1	Screw-HH
☆19		2	Screw-Set
☆20		2	Collar-Locking
21	56-6230	2	Bearing (Includes 19-20)
22	13-4960	6	Shaft-Plate, Finger
23	13-2840	1	Key-Square
24	32152-2	12	Nut-Lock

Ref. No.	Part No.	Qty.	Description
25	93-0189	3	Staked End Plate ASM
26	93-0197	1	Flex Tip-Reel
27	93-0185	60	Staked Center Plate ASM
28	93-0187	3	Staked End Plate ASM
29	13-2470	276	Finger-Nylon
30	13-3090	66	Spring
31	13-2480	276	Clamp-Finger
32	32140-94	276	Screw-HH
33	93-7711	2	Hook-Transport
34	13-0560	2	Spacer
35	32153-2	4	Nut
36	13-0360	2	Spacer
37	13-3070	2	Spacer
38	32153-5	6	Nut
39	13-5540	2	Link-Lift
40	328-10	1	Bolt-HH
41	63-5300	1	Trailing Arm-LH (Includes 59)
42	32153-6	1	Nut
43	325-9	4	Screw-HH
44	323-9	5	Screw-HH
45	13-0320	2	Collar-Lock
46	32121-45	2	Pin-Roll
47	13-0330	2	Block-Pivot

☆ Not serviced

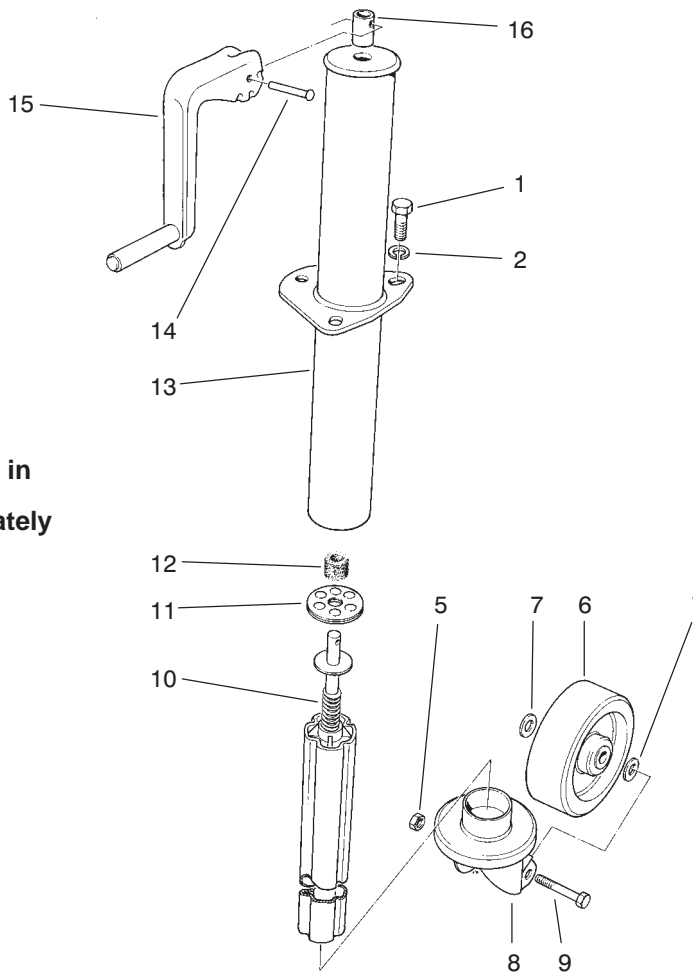


### Flex-Tip Reel and Trailing Arm (Continued)

Ref. No.	Part No.	Qty.	Description
48	13-5550-01	2	Arm-Gauge Wheel
49	13-5570	2	Bar-Pivot
50	13-2870	2	Wheel-Gauge (Includes 62)
51	13-5590	2	Rod-Adjustment
52	13-5670	2	Spacer-Locking
53	3217-9	2	Nut-Hex
54	93-4415	1	Pulley-Idler
55	325-5	1	Screw-HH
56	63-5250	1	Spacer
57	3254-8	2	Washer-Lock
58	302-5	2	Fitting-Grease
59	256-298	2	Bushing
60	93-4429	1	Washer-Pulley
61	323-10	1	Screw-HH
62	93-7715	4	Ball Bearing
63	323-5	3	Screw-HH
*64	3253-4	3	Washer-Lock
*65	322-7	3	Screw-HH

Ref. No.	Part No.	Qty.	Description
----------	----------	------	-------------

\*Not Illustrated



Parts not listed in  
part list are not  
serviced separately

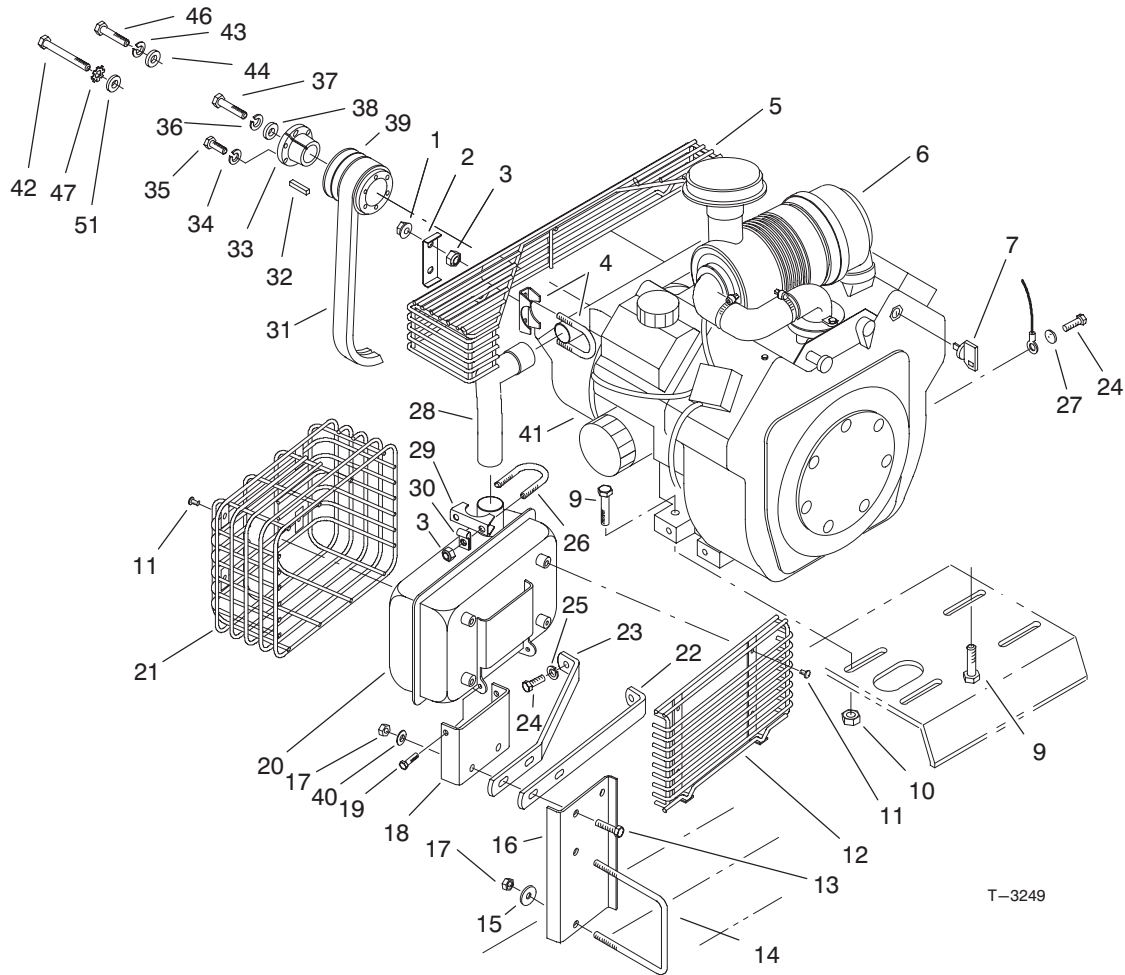
T-0015

# Jack Assembly

Ref. No.	Part No.	Qty.	Description
1	323-4	3	Screw-HH
2	3253-21	3	Washer-Lock
5	3296-23	1	Nut-Lock
6	13-6460	1	Wheel
7	3256-26	2	Washer-Flat
8	13-6450-01	1	Bracket-Wheel, Caster
9	325-13	1	Screw-HH
★10		1	Ram
11	13-3510	1	Bearing-Thrust
12	13-3610	1	Sleeve-Felt
13	13-5680	1	Jack ASM (Includes 10-16)
14	13-6730	1	Rivet
15	13-6740	1	Handle
16	13-3490	1	Sleeve
*	13-6440	1	Wheel ASM (Includes 5-9)

Ref. No.	Part No.	Qty.	Description

\*Not Illustrated  
★ Not serviced

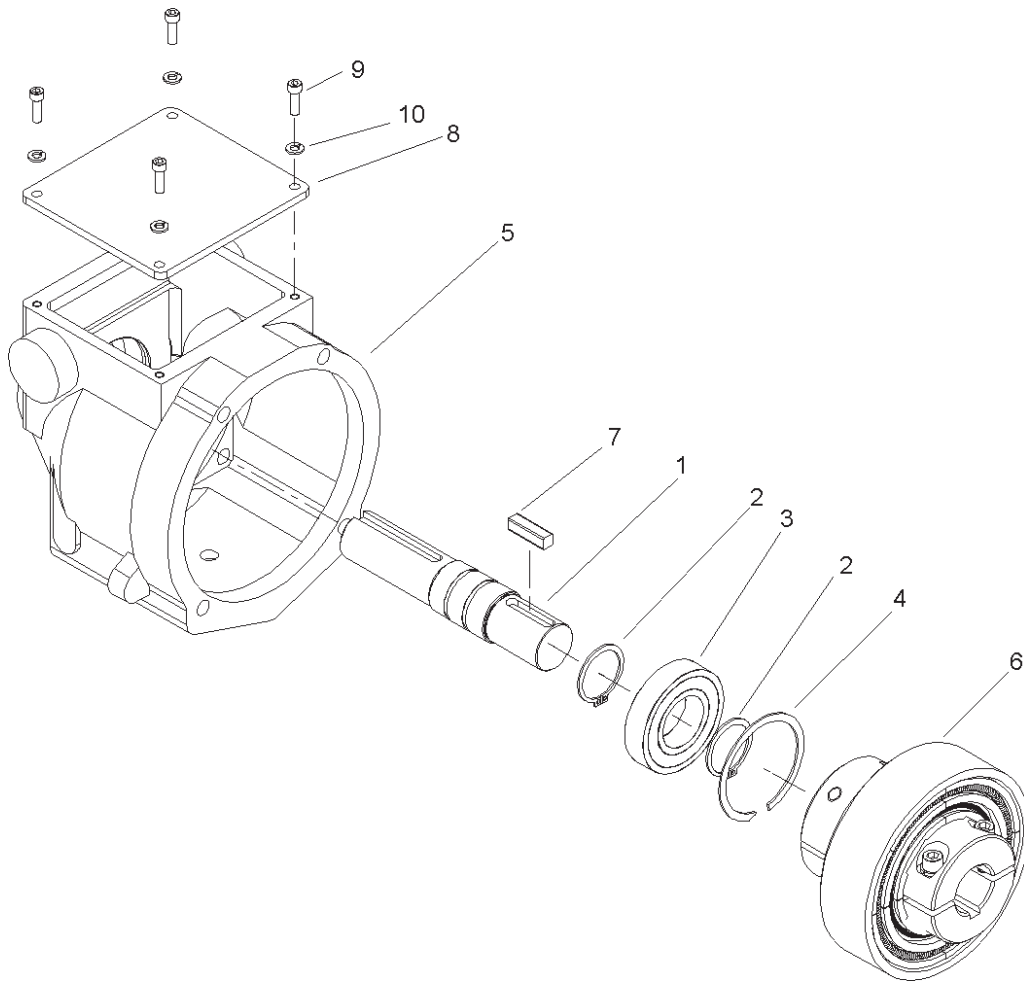


## Engine Assembly

Ref. No.	Part No.	Qty.	Description	Ref. No.	Part No.	Qty.	Description
1	32128-20	4	Nut-Lock, Flange	25	3253-4	2	Washer-Lock
2	93-7703-03	2	Plate-Clamp Guard	26	2112-11	1	Clamp-Muffler (Includes 29)
3	32153-3	5	Nut-Lock	27	3254-2	1	Washer-Lock ITLW
4	94-1756	2	Muffler Clamp ASM	‡28	24 382 04	1	Pipe-Exhaust
5	93-4418-03	1	Guard-Manifold, Exhaust	29		1	Clamp-Muffler
☆‡16		1	Engine-Kohler, CH23S-76546	30	2412-103	1	R-Clamp
7	63-8360	2	Key	31	13-2650	1	V-Belt
9	323-9	4	Screw-HH	32	3-9155	1	Key-Square
10	32128-29	4	Nut-HFH	33	13-3330	1	Bushing (Includes 37-38)
11	47-2830	8	Screw-Machine	34	3253-3	3	Washer-Lock
12	93-4419-03	1	Guard-Muffler, Rear	35	321-6	3	Screw-HH
13	322-6	2	Screw-HH	36	3253-21	1	Washer-Lock
14	93-4417	1	U-Bolt	37	323-10	1	Screw-HH
15	3256-82	2	Washer-Flat	38	4-1920	1	Washer
16	93-4416-03	1	Bracket-Support, Muffler	39	13-3320	1	Pulley
17	3296-47	4	Nut-Lock	40	3256-23	2	Washer-Flat
18	93-0198-03	1	Bracket-Support	41	106-9652	1	Clutch ASM
19	46-6810	2	Screw	42	324-31	2	Screw-HH
‡20	24 068 14	1	Muffler	43	3253-6	2	Washer-Lock
‡21	24 314 03	1	Guard-Muffler	44	3256-25	4	Washer-Flat
22	93-4000-03	1	Strap-Muffler Support	46	324-12	2	Screw-HH
23	93-0199-03	1	Strap-Muffler Support	47	3255-16	2	Washer-Lock, Ext
24	33114-016	3	Screw-Cap HH	51	37-4700	2	Spacer

‡Obtain these items directly from Kohler Co., Kohler, WI 53044 1-800-544-2444

☆ Not serviced



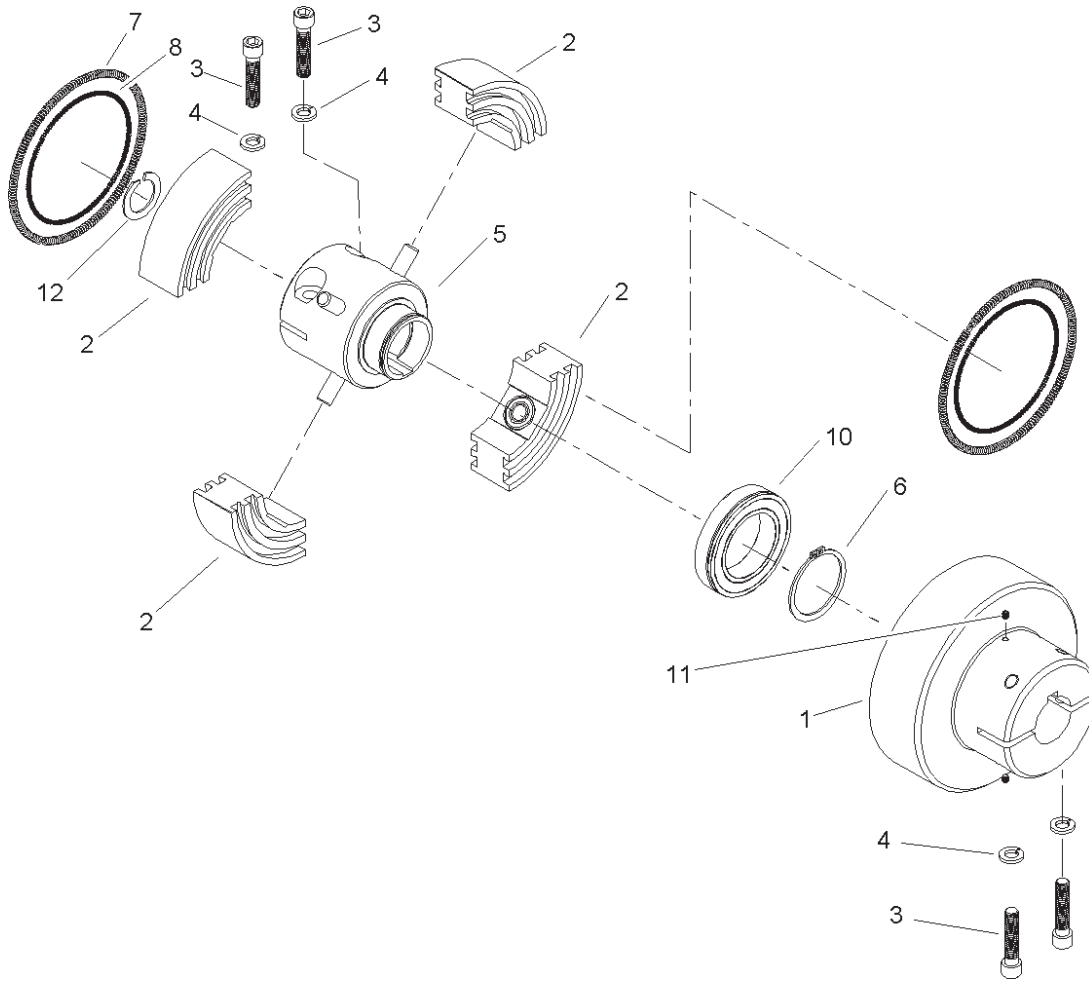
Sheet No.:0

## Clutch Assembly No. 107-1050

Ref. No.	Part No.	Qty.	Description
1	107-1052	1	Shaft
2	107-1053	2	Ring-Retaining
3	107-1054	1	Bearing
4	107-1055	1	Ring-Retaining
☆5		1	Housing
6	107-1070	1	Centrifugal Clutch ASM
7	107-1057	1	Key
8	107-1058	1	Cover
9	3274-8	4	Screw-HSH
10	3253-3	4	Washer-Lock

Ref. No.	Part No.	Qty.	Description

☆ Not serviced separately



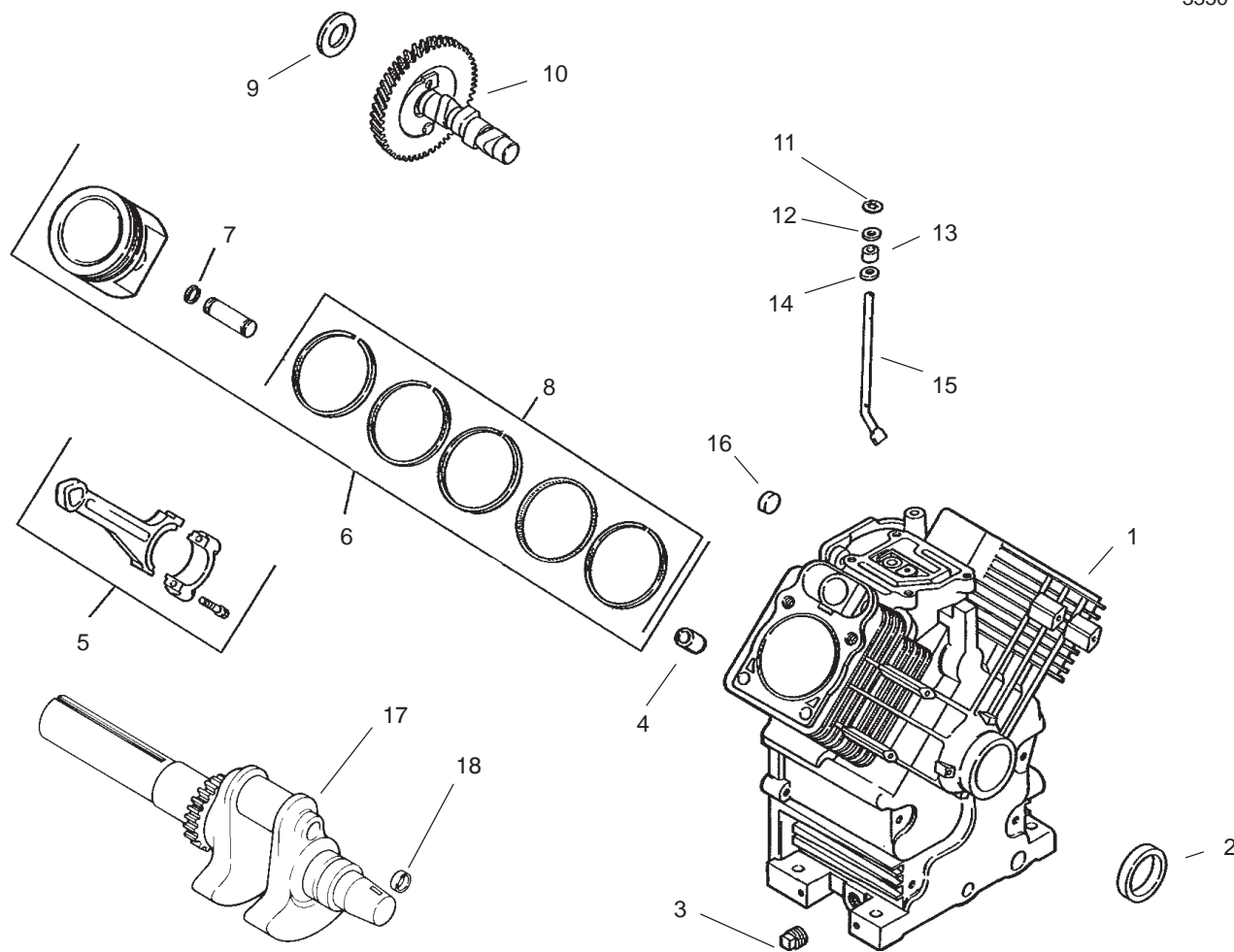
Sheet No.:A1

### Clutch Assembly No. 107-1070

Ref. No.	Part No.	Qty.	Description
☆1		1	Housing-Clutch
2	107-1072	4	Shoe ASM
3	3274-3	4	Screw-HSH
4	3253-21	4	Washer-Lock
5	107-1081	1	Hub ASM
6	107-1074	1	Ring-Retaining
7	107-1075	2	Spring
8	107-1076	2	Spring
10	107-1078	1	Bearing
11	107-1079	2	Point-Cone
12	107-1080	1	Ring-Retaining

Ref. No.	Part No.	Qty.	Description

☆ Not serviced separately

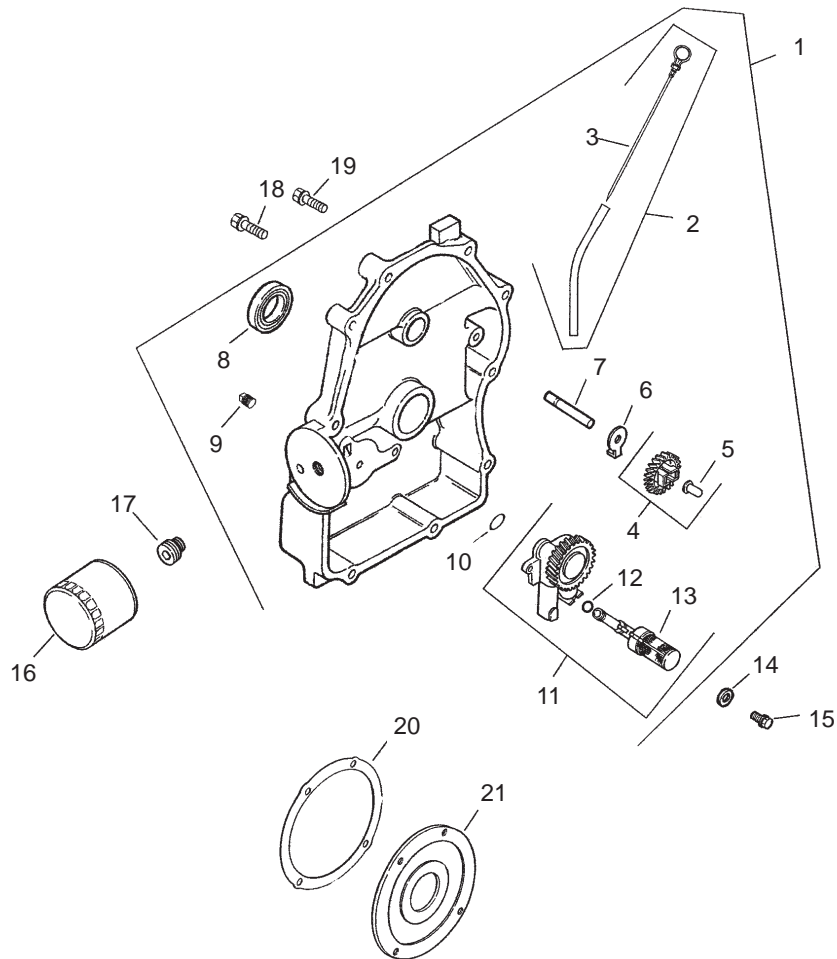


## Crankshaft and Crankcase Assembly Kohler CH23S-76546

Ref. No.	Part No.	Qty.	Description
1	N/A	1	Crankcase
2	24 032 01	1	Seal-Oil, Front
3	25 139 57	2	Plug-Pipe, SQH
4	24 380 13	6	Pin-Locating
5	24 067 13	2	Rod-Connecting (Std.)
6	24 067 14	2	Rod-Connecting (.25)
	24 874 09	2	Piston w/Ring Set (Std.) (Includes 7,8)
	24 874 10	2	Piston w/Ring Set (.25)
	24 874 11	2	Piston w/Ring Set (.50)
7	24 874 15	2	Piston w/RingSet(.080)
	24 018 01	4	Retainer-Pin, Piston
8	24 108 08	2	Ring Set (Std.)
	24 108 09	2	Ring Set (.25)
	24 108 10	2	Ring Set (.50)
9	12 422 09	A/R	Shim-Camshaft, Red
	12 422 13	A/R	Shim-Camshaft, Black
	12 422 07	A/R	Shim-Camshaft, White
	12 422 08	A/R	Shim-Camshaft, Blue
	12 422 10	A/R	Shim-Camshaft, Yellow

Ref. No.	Part No.	Qty.	Description
	12 422 11	A/R	Shim-Camshaft, Green
	12 422 12	A/R	Shim-Camshaft, Gray
10	24 012 10	1	Camshaft
11	24 018 09	1	Ring-Retainer
12	M-931010	1	Washer-Plain,
13	28 032 09	1	Seal-Governor Cross Shaft
14	24 468 15	1	Washer-Flat
15	24 144 33	1	Shaft-Governor Cross
16	52 139 09	1	Plug-Cup
17	24 014 78	1	Crankshaft (Incl. Ref#18)
18	52 139 09	1	Plug-Cup

Obtain parts from Kohler

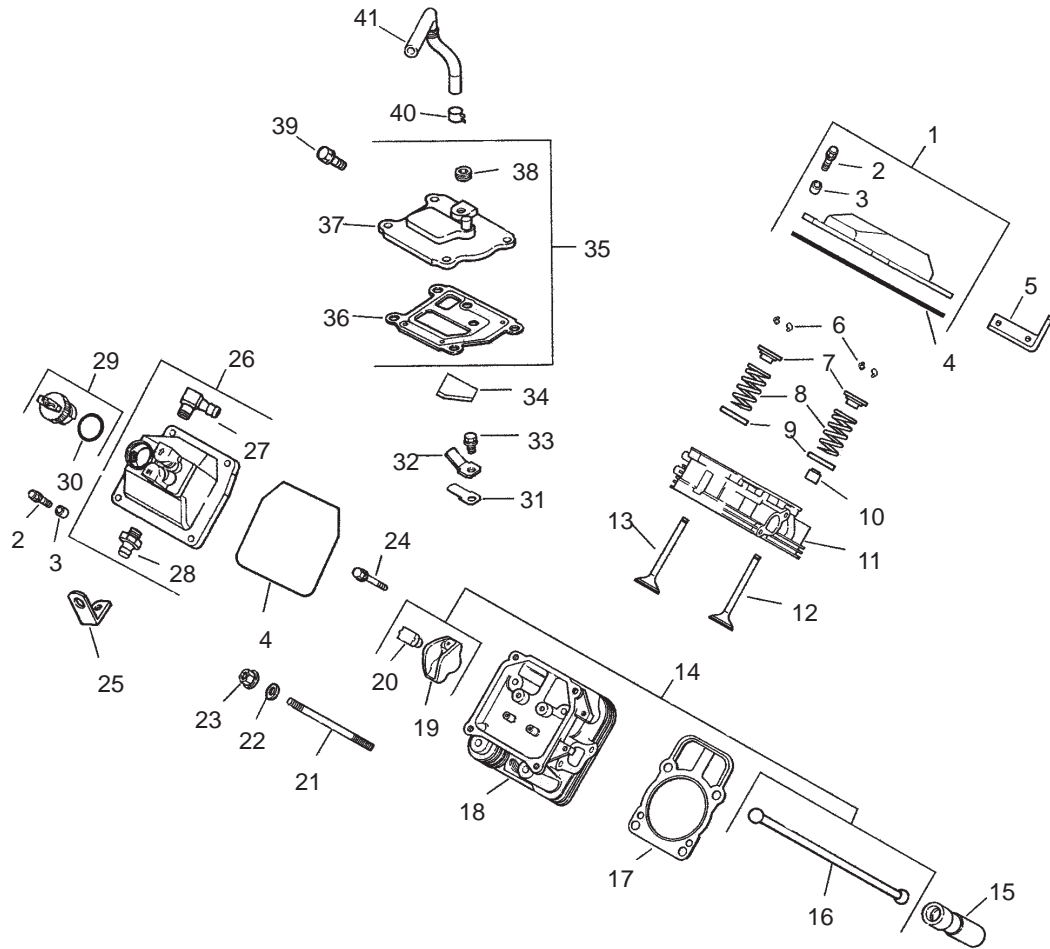


## Oil Pan and Lubrication Assembly Kohler CH23S-76546

Ref. No.	Part No.	Qty.	Description	Ref. No.	Part No.	Qty.	Description
1	24 009 90	1	Closure Plate ASM (Includes 2-13)	20	24 041 25	1	Gasket—Clutch Plate—Adapter
2	24 755 121	1	Dipstick Tube ASM (Includes 3)	21	24 146 10	1	
3	24 038 10	1	Dipstick				
4	24 043 12	1	Kit—Governor Gear (Includes 5)				
5	12 380 01	1	Pin—Governor, Regulating				
6	52 448 02	1	Tab—Locking				
7	12 144 02	1	Shaft—Gear, Governor				
8	52 032 08	1	Seal—Oil, (PTO end)				
9	25 139 60	2	Plug—Pipe, SQH				
10	24 153 08	1	O—Ring				
11	24 393 10	1	Oil Pump Assembly (Includes 12,13)				
12	24 153 01	1	O—Ring—Oil Pick—Up				
13	24 381 04	1	Pick—Up, Oil				
14	M-631005	2	Washer—Plain				
15	M-645025	2	Screw—HHF				
16	12 050 01	1	Filter—Oil				
17	24 136 01	1	Nipple—Filter, Oil				
18	24 086 16	9	Screw—HHF				
19	24 086 17	1	Screw—HHF				

Obtain parts from Kohler



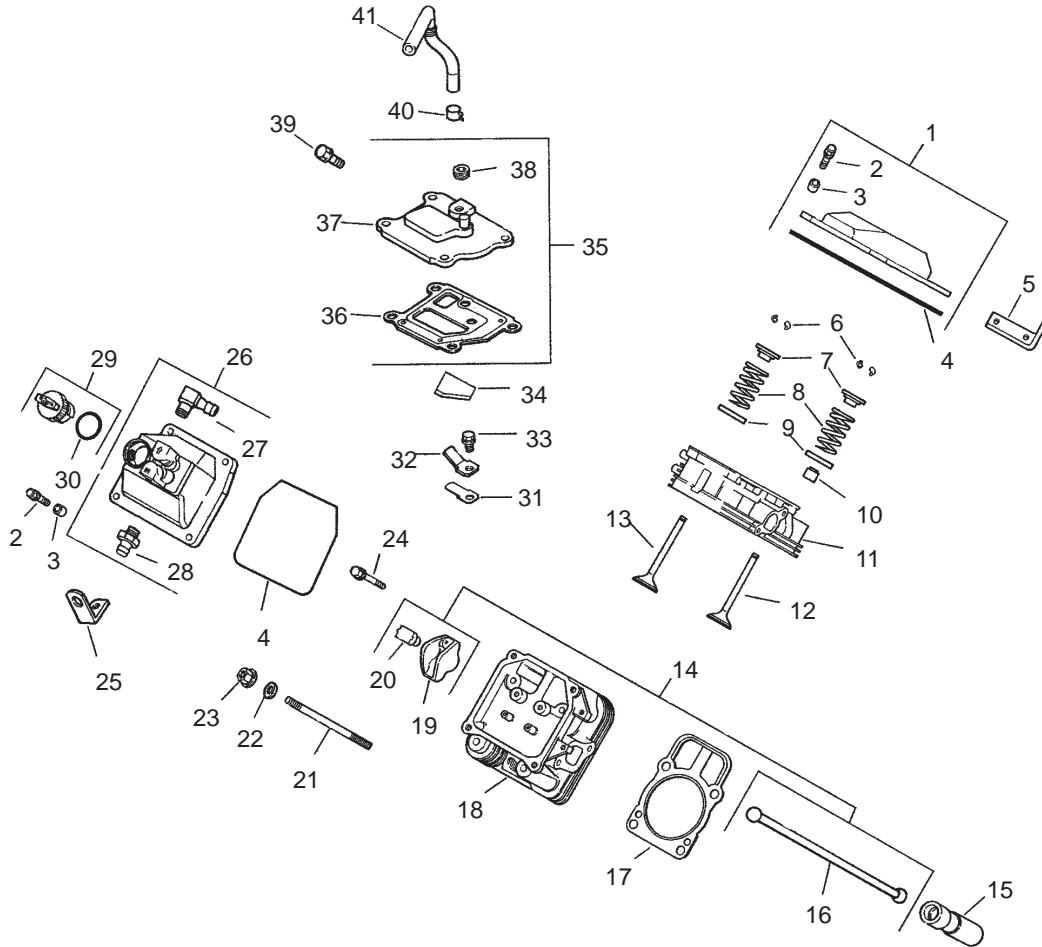


## Head, Valve and Breather Assembly Kohler CH23S-76546

Ref. No.	Part No.	Qty.	Description
1	24 755 74	1	Kit—Cover, Valve (Includes 2-4)
2	M-651030	4	Screw—HHF
3	24 112 08	4	Spacer
4	24 153 16	1	O—Ring—Cover, Valve
5	24 455 01	1	Strap—Lifting
6	12 755 03	4	Kit—Retainer
7	12 173 01	4	Cap—Spring, Valve
8	24 089 02	4	Spring—Valve
9	235011	4	Retainer—Spring
10	24 032 05	2	Seal—Stem, Valve
11	24 318 68	1	Cylinder Head ASM #1
12	24 017 01	2	Valve—Intake (Std.)
	24 017 02	2	Valve—Intake (.25)
13	24 016 01	2	Valve—Exhaust (Std.)
	24 016 02	2	Valve—Exhaust (.25)
14	24 755 66	1	Kit—Train, Valve (Includes 16,19,20)
15	25 351 01	4	Lifter—Valve
16	24 411 05	4	Rod—Push
17	24 041 40	2	Gasket—Head,Cylinder
18	24 318 71	1	Cylinder Head ASM #2
19	25 186 01	4	Arm—Rocker
20	24 599 01	4	Pivot—Arm, Rocker

Ref. No.	Part No.	Qty.	Description
21	24 072 09	8	Stud—Head, Cylinder
22	24 468 16	8	Washer—Flat
23	24 100 10	8	Nut—HF
24	M-640034	4	Screw—HHF
25	12 445 05	1	Strap—Lifting
26	24 393 12	1	Cover—Valve (Includes 27,28)
27	25 155 02	1	Connector—90 deg
28	25 326 03	2	Connector—Straight
29	24 227 02	1	Oil Fill Cap ASM (Includes 30)
30	24 153 09	1	O—Ring
31	24 402 03	1	Reed—Breather
32	12 018 01	1	Retainer—Breather, Reed
33	M-545010	1	Screw—HHF
34	24 050 01	1	Filter—Breather
35	24 033 01	1	Kit—Breather (Includes 36-38)
36	24 041 23	1	Gasket—Breather
37	24 096 58	1	Cover—Breather
38	25 139 60	1	Plug—Pipe, HSH
39	M-645020	4	Screw—HHF
40	25 237 08	2	Clamp—Breather

Obtain parts from Kohler

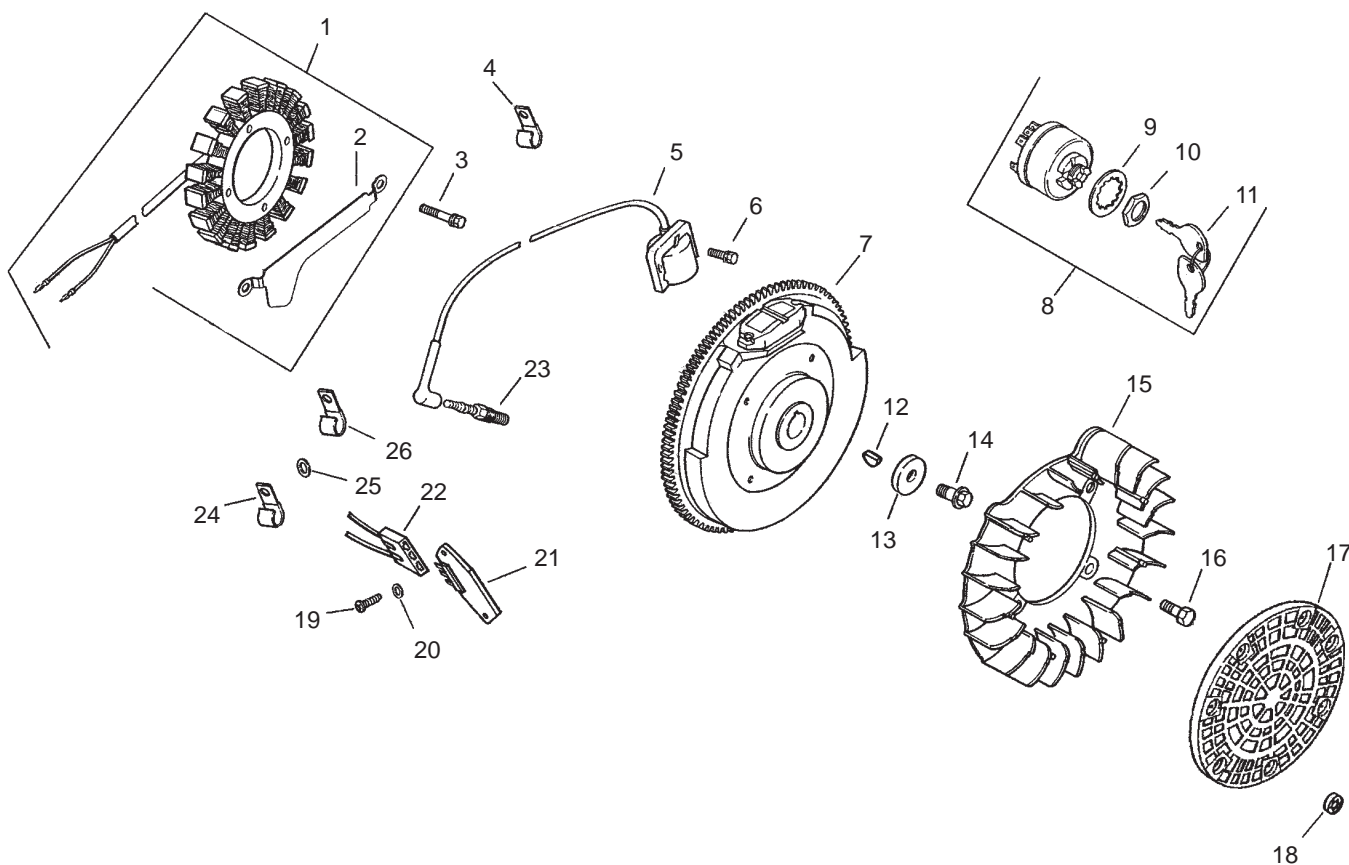


## Head, Valve and Breather Assembly (Continued) Kohler CH23S-76546

Ref. No.	Part No.	Qty.	Description
41	24 326 31	1	Hose—Breather

Ref. No.	Part No.	Qty.	Description

Obtain parts from Kohler

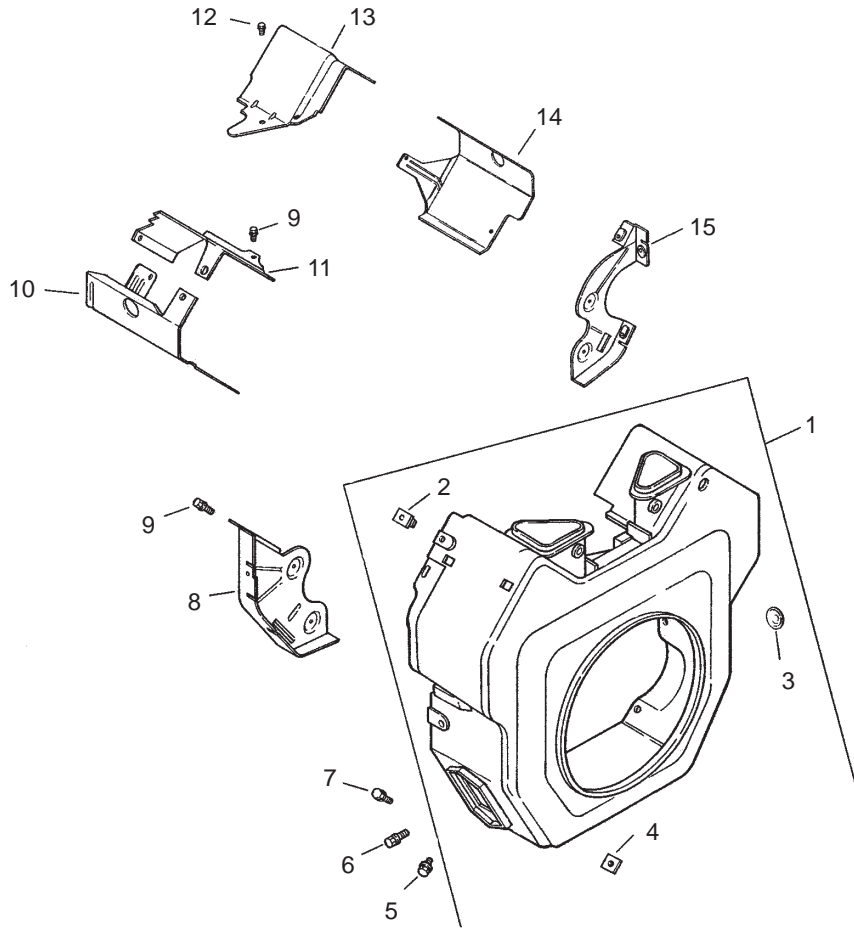


## Ignition and Electrical Assembly Kohler CH23S-76546

Ref. No.	Part No.	Qty.	Description	Ref. No.	Part No.	Qty.	Description
1	54 755 09	1	Kit—Stator, 15 amp (Includes 2)	22	236602	1	Connector (3 contact)
2	24 126 71	1	Bracket—Wire, Stator	23	12 132 02	2	Spark Plug
3	M-548025	2	Screw—HH	24	235173	1	Clip—Cable
4	24 154 03	1	Clip—Cable	25	X-25-63	1	Washer—Plain
5	24 584 01	2	Module—Ignition	26	48 154 02	1	Clip—Cable
6	M-545020	4	Screw—HSH	*	24 518 12	1	Lead—Black
7	24 025 10	1	Flywheel	*	X-22-11	1	Washer—Lock
8	25 099 04	1	Key Switch Assembly (Includes 9-11)	*	24 113 03	1	Decal—Key Switch
9	48 468 02	1	Washer	*	54 755 02	1	Kit— Harness, Wiring (Includes items listed below)
10	48 100 01	1	Nut—Key Switch	*			
11	48 340 01	1	Key (set of 2)	*	15 452 01	2	Terminal
12	X-42-15	1	Key	*	24 176 41	1	Lead—Duplex
13	12 468 03	1	Washer—Plain	*	24 176 50	1	Harness—Wiring
14	12 086 14	1	Screw—HHF	*	24 518 34	1	Lead—Violet
15	24 157 01	1	Fan	*	25 454 03	3	Tie—Cable
16	25 086 47	4	Bolt—Shoulder				
17	24 162 03	1	Screen—Grass				
18	24 018 03	3	Retainer				
19	24 086 18	2	Screw—PTH				
20	X-25-92	2	Washer—Plain				
21	25 403 03	1	Rectifier—Regulator, 15 amp				

\*Not Illustrated

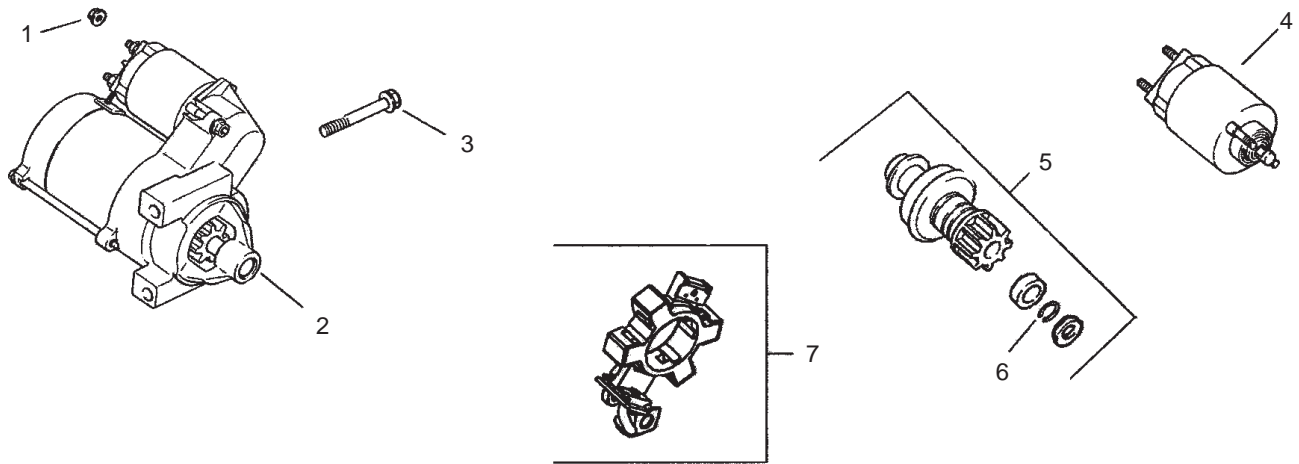
Obtain parts from Kohler



## Blower Housing and Baffle Assembly Kohler CH23S-76546

Ref. No.	Part No.	Qty.	Description	Ref. No.	Part No.	Qty.	Description
1	24 027 20	1	Housing—Blower (Includes 2-4)				
2	24 100 02	2	Nut—Plastic				
3	25 139 16	1	Plug—Button				
4	24 100 01	3	Nut—Plastic				
5	M-551016	1	Screw—HHF				
6	M-545016	3	Screw—HHF				
7	M-545020	4	Screw—HHF				
8	24 146 16	1	Plate—Backing, #2 side				
9	M-645016	6	Screw—HHF				
10	24 063 20	1	Baffle—Barrel, Cylinder #2 side				
11	24 063 17	1	Baffle—Valley, #2 side				
12	M-545010	2	Screw—HHF				
13	24 063 24	1	Baffle—Valley, #1 side				
14	24 063 58	1	Baffle—Barrel, Cylinder #1 side				
15	24 146 20	1	Plate—Backing, #1 side				
*	24 146 33	1	Decal—23 HP				

\*Not Illustrated  
Obtain parts from Kohler

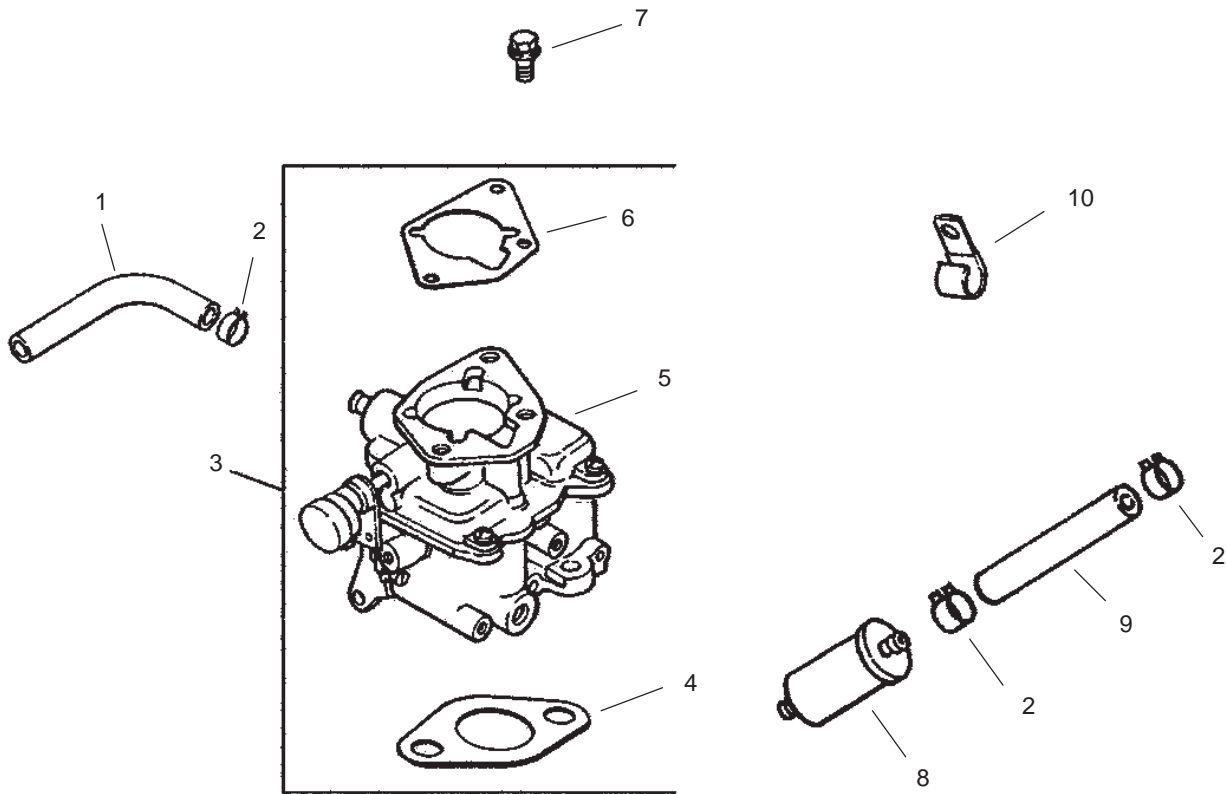


## Starting System Assembly Kohler CH23S-76546

Ref. No.	Part No.	Qty.	Description
1	M-841080	1	Nut-HF
2	25 098 08	1	Starter/Solenoid Shift ASM (Includes 4-7)
3	M-839080	2	Screw-HF
4	25 435 04	1	Kit-Solenoid
5	25 755 33	1	Kit-Drive, Pinion (Includes 6)
6	25 141 05	1	Ring
7	25 225 01	1	Kit-Brush

Ref. No.	Part No.	Qty.	Description

Obtain parts from Kohler

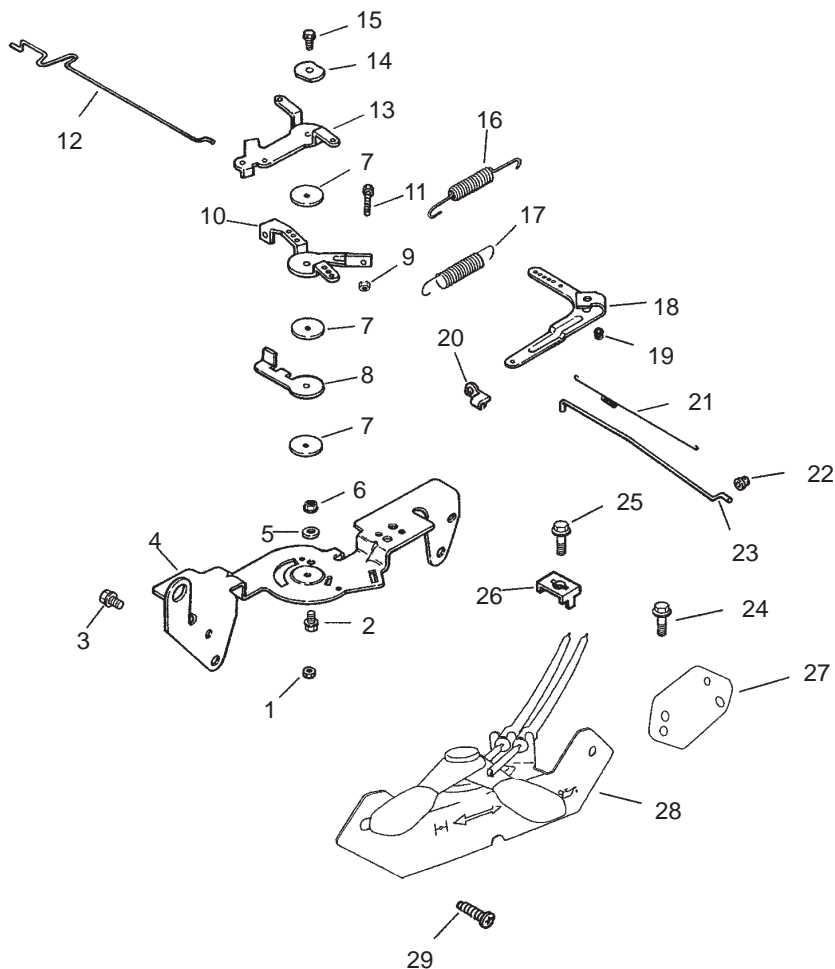


## Fuel System Assembly Kohler CH23S-76546

Ref. No.	Part No.	Qty.	Description
1	24 353 12	1	Line—Fuel
2	25 237 14	4	Clamp—Hose
3	24 853 59	1	Kit—Carburetor w/gasket (Incl. 4–6)
4	24 041 17	1	Gasket—Carburetor
5	24 053 59	1	Carburetor ASM (For information only not available separately) (Service with kits 24 757 01, 24 757 02, 24 757 03, and 24 757 07)
6	24 041 06	1	Gasket—Base, Air Cleaner
7	M-651030	2	Screw—HHF
8	24 050 02	1	Filter—Fuel
9	24 353 11	1	Line—Fuel
10	47 154 01	1	Clip—Cable
*	24 757 01	1	Kit—Solenoid (Includes the following)
*	24 153 04		O—Ring
*	24 153 05		O—Ring
*	24 153 06		O—Ring
*			Solenoid Seat,

Ref. No.	Part No.	Qty.	Description
*			Solenoid & Solenoid Screw)
*	24 757 02	1	Kit—Repair, Float (Includes Carburetor Body Gasket)
*	24 757 03	1	Kit—Repair, Carburetor (Includes Carburetor Body Gasket, Carburetor Body, Screw Idle Needle, Slow Jet Spring, Main Jet Screw, O—Ring, O—Ring—Solenoid, O—Ring—Solenoid, O—Ring—Solenoid, Inlet Needle Valve Clip, Idle Needle, & Inlet Needle Valve)
*	24 757 07	1	Kit—Choke Repair (Includes Choke Cap Lever)
	24 153 04		O—Ring
	24 153 05		O—Ring
	24 153 06		O—Ring

\*Not Illustrated  
Obtain parts from Kohler

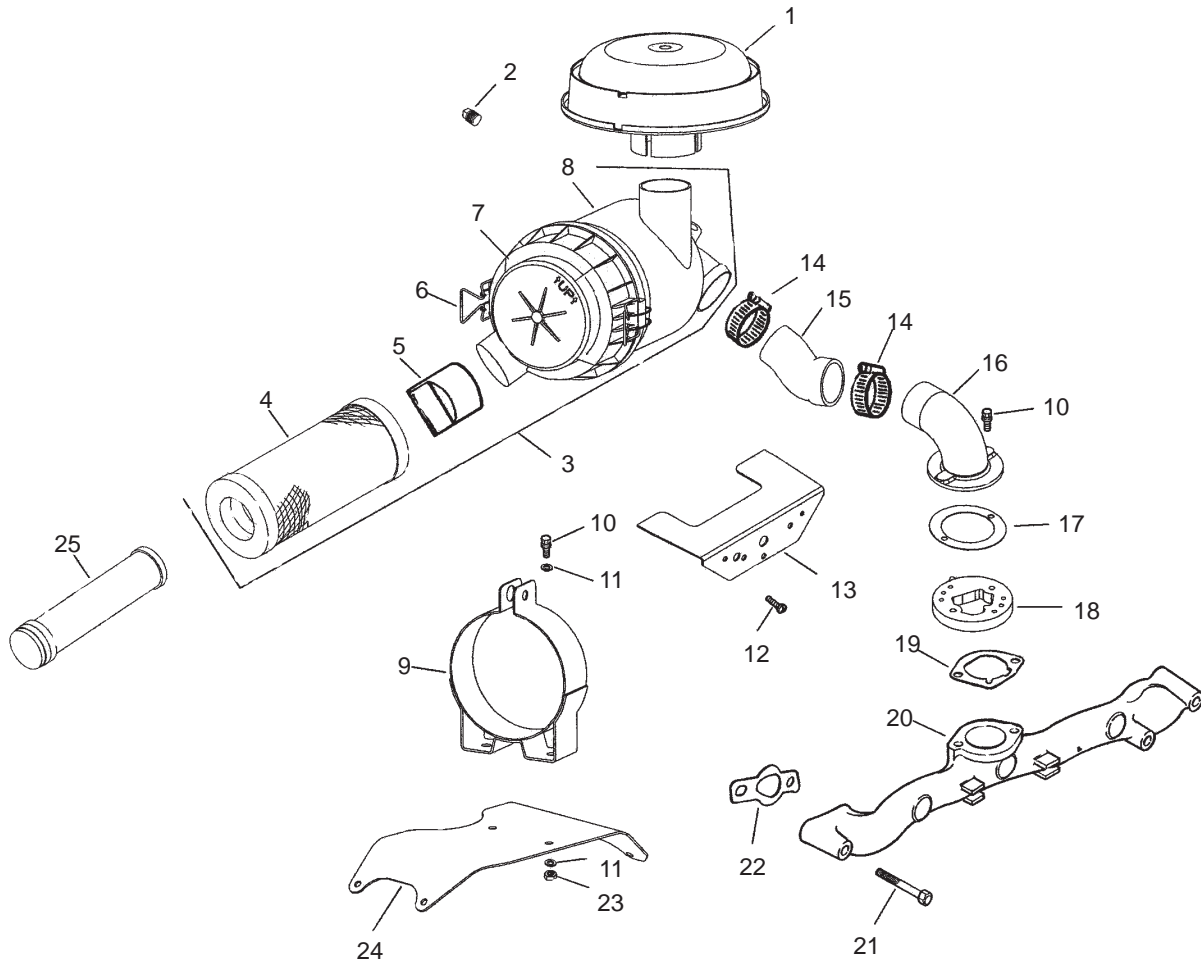


## Engine Control Assembly Kohler CH23S-76546

Ref. No.	Part No.	Qty.	Description	Ref. No.	Part No.	Qty.	Description
1	M-547050	1	Nut-Hex Lock	22	25 158 11	1	Bushing-Retaining Linkage
2	M-545016	1	Screw-HF	23	24 079 01	1	Linkage-Throttle
3	M-645016	4	Screw-HF	24	M-545010	2	Screw-HF
4	24 126 56	1	Bracket-Control	25	24 086 43	1	Screw-HHF
5	X-20-1	1	Washer-Lock	26	12 237 01	1	Clamp-Cable
6	M-541050	1	Nut-HF	27	24 126 99	1	Bracket-Support, Cable
7	24 468 01	3	Washer-Plain	28	24 225 02	1	Cable, control ASM
8	24 090 07	1	Lever-Actuator, Throttle	29	24 211 03	1	Bolt
9	M-446030	1	Nut-Hex	*	24 113 92-S	1	Decal-Panel, Control
10	24 090 13	1	Lever-Control, Throttle				
11	M-401030	1	Screw-HH				
12	24 079 02	1	Linkage-Choke				
13	24 090 05	1	Lever-Choke				
14	41 468 03	1	Washer-Spring				
15	M-545020	1	Screw-HF				
16	24 089 51	1	Spring-Limiter, Throttle				
17	24 089 49	1	Spring-Governor				
18	24 090 33	1	Lever-Governor				
19	M-641060	1	Nut-HF				
20	25 158 08	1	Bushing-Retaining, Linkage				
21	24 089 01	1	Spring-Linkage				

\*Not Illustrated

Obtain parts from Kohler



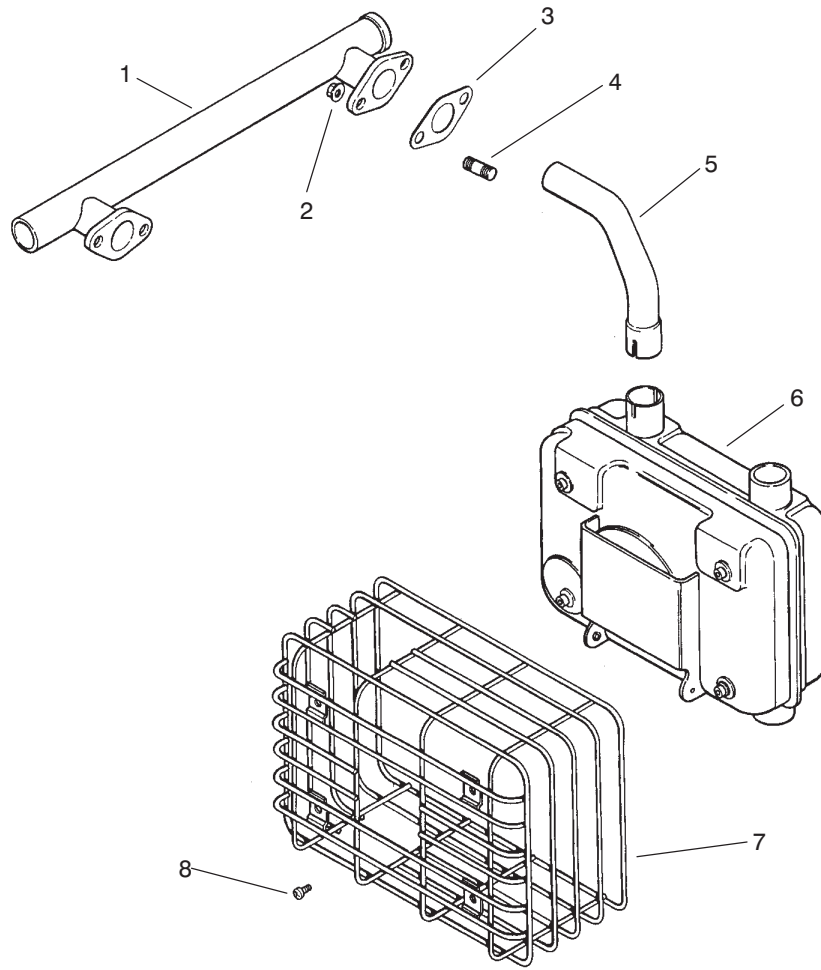
## Air Intake and Filtration Assembly Kohler CH23S-76546

Ref. No.	Part No.	Qty.	Description
1	25 324 02	1	Hood-Cleaner, Air
2	25 139 20	1	Plug-Pipe
3	25 048 07	1	Air cleaner ASM (Includes 4-8)
4	25 083 01	1	Element-Cleaner, Air (Primary)
5	24 462 07	1	Valve-Ejector, Dust
6	25 154 05	2	Clip
7	25 096 06	1	Plastic Air Cleaner Cover Assembly
8	25 081 01	1	Housing-Air Cleaner, Heavy Duty
9	25 126 02	1	Bracket-Cleaner, Air
10	M-639016	6	Screw-HF
11	X-25-73	4	Washer-Plain
12	24 086 06	2	Screw-PTH
13	24 314 29	1	Shield-Debris
14	25 237 14	2	Clamp-Hose
15	24 326 32	1	Hose-Cleaner, Air
16	24 029 21	1	Adapter-Remote
17	24 041 34	1	Gasket-Adapter
18	24 029 31	1	Adapter Assembly
19	24 041 06	1	Gasket-Base, Air Cleaner

Ref. No.	Part No.	Qty.	Description
20	24 164 14	1	Manifold-Intake
21	25 086 84	4	Screw-HF
22	24 041 01	2	Gasket-Manifold, Intake
23	M-647060	2	Nut-Hex
24	24 126 98	1	Bracket-Cleaner, Air
25	25 083 04	1	Element-Cleaner, Air (Safety)
*	12 113 04	1	Decal-Cleaner, Air

\*Not Illustrated  
Obtain parts from Kohler





## Exhaust Assembly Kohler CH23S-76546

Ref. No.	Part No.	Qty.	Description
1	24 164 11	1	Manifold-Exhaust
2	M-841080	4	Nut-HF
3	24 041 02	2	Gasket-Exhaust
4	25 072 04	4	Stud
*	12 755 93	1	Gasket Set
5	24 382 04	1	Pipe-Exhaust
6	24 068 14	1	Muffler-Side Mount
7	24 314 03	1	Guard-Muffler
8	M-550010	4	Screw-HF
*	12 189 02	1	Spark Arrestor (Optional)

Ref. No.	Part No.	Qty.	Description

\*Not Illustrated  
Obtain parts from Kohler

# Maintenance Record

Date								

# Maintenance Record

Date								

