



# Recycler<sup>®</sup> Kit

52in, 60in, and 72in TURBO FORCE Side Discharge Mower

Part No. 107-1610, 107-1611, 107-1612

Form No. 3350-214

## Installation Instructions

**Note:** Determine the left and right sides of the machine from the normal operating position.

### Loose Parts

**Note:** Use the chart below to identify parts for assembly.

Step	Description	Qty.	Use
<b>1</b>	No parts needed	–	Removing the existing blades
<b>2</b>	No parts needed	–	Removing the existing baffles
<b>3</b>	Left baffle Bolt, 3/8 x 1 inch Nut, 3/8 inch Tapping bolt, 3/8 x 1 inch Flange Nut, 3/8 inch Right baffle Bolt, 1/2 x 1 inch Nut, 1/2 inch Washer, 1/2 inch	1 2 2 5 5 1 1 1 1	Installing the baffles for 52 inch mowers
<b>4</b>	Left baffle Bolt, 3/8 x 1 inch Nut, 3/8 inch Tapping bolt, 3/8 x 1 inch Flange Nut, 3/8 inch Right baffle Bolt, 1/2 x 1 inch Nut, 1/2 inch Washer, 1/2 inch	1 2 2 5 5 1 2 2 2	Installing the baffles for 60 inch mowers

Step	Description	Qty.	Use
<b>5</b>	Left baffle	1	Installing the baffles for 72 inch mowers
	Bolt, 3/8 x 1 inch	2	
	Nut, 3/8 inch	2	
	Tapping bolt, 3/8 x 1 inch	5	
	Flange Nut, 3/8 inch	5	
	Right baffle	1	
	Bolt, 1/2 x 1 inch	2	
	Nut, 1/2 inch	2	
	Washer, 1/2 inch	2	
<b>6</b>	Kickers	1	Installing the kickers for 72 inch mowers
	Bolt, 3/8 x 1 inch	4	
	Lock nut, 3/8 inch	4	
<b>7</b>	Mulching blades	3	Installing the mulching blades

## Before Installation

1. Thoroughly clean mower deck. All debris must be removed to ensure baffles will fit properly against mower deck.
2. Repair all bent or damaged areas of mower deck and replace any missing parts.

### Step

# 1

## Removing the Existing Blades

### Parts needed for this step:

None

### Procedure

1. Remove the existing blades from the spindles (Fig. 1).

**Note:** Save the blades for use when in side discharging mode.



### Warning



A blade is sharp. Contact with sharp blade can cause serious personal injury.

- Wear gloves or wrap sharp edges of the blade with a rag.

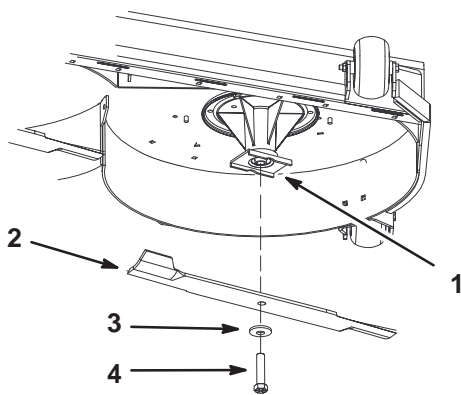


Figure 1

m-6955

- |            |               |
|------------|---------------|
| 1. Spindle | 3. Washer     |
| 2. Blade   | 4. Blade bolt |

### Step

# 2

## Removing the Existing Baffles

### Parts needed for this step:

None

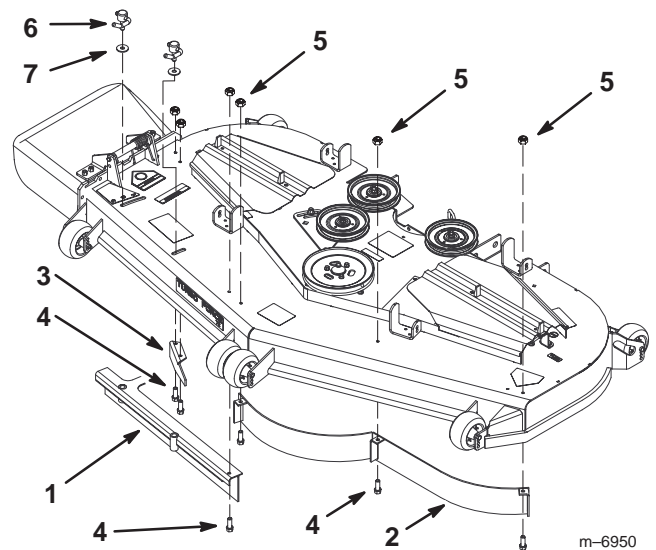
### Procedure

**Note:** 72 inch mower is shown in Figure 2.

**Note:** In the steps below, the bolts are threaded into the mower. Remove the nuts first before removing bolts.

1. Remove the cam locks, washers, and the nut and bolt from the adjustable flow baffle (Fig. 2).
2. Remove the bolts and nuts holding the left baffle in place (Fig. 2).
3. Remove the bolts and nuts holding the discharge baffle (Fig. 2).

**Note:** Save the baffles and hardware for use when changing to side discharging mode.



m-6950

Figure 2

- |                                 |             |
|---------------------------------|-------------|
| 1. Right adjustable flow baffle | 4. Bolt     |
| 2. Left front baffle            | 5. Lock Nut |
| 3. Discharge baffle             | 6. Cam lock |
|                                 | 7. Washer   |

# Step

# 3

## Installing the Baffles for 52 inch Mowers

### Parts needed for this step:

Qty.	Part
1	Left baffle
2	Bolt, 3/8 x 1 inch
2	Lock nut, 3/8 inch
5	Tapping bolt, 3/8 x 1 inch
5	Flange nut, 3/8 inch
1	Right baffle
1	Bolt, 1/2 x 1 inch
1	Nut, 1/2 inch
1	Washer, 1/2 inch

### Procedure

**Note:** All holes exist in the mower for installing the new baffles.

**Note:** Loosely install the baffles to align the baffles with all existing holes in the mower. Tighten the tapping bolts into the mower first, before tightening the flange nuts.

1. Install the right baffle into the mower.
2. Secure the right baffle to the top of the mower with 1 bolt (1/2 x 1 inch), 2 tapping bolts (3/8 x 1 inch), 1 nut (1/2 inch), 1 washer (1/2 inch), and 2 flange nuts (3/8 inch) (Fig. 3).
3. Secure the right baffle to the rear baffle with 1 bolt (3/8 x 1 inch) and 1 nut (3/8 inch) (Fig. 3).
4. Install the left baffle into the mower.
5. Secure the left baffle to the top of the mower with 3 tapping bolts (3/8 x 1 inch) and 3 flange nuts (3/8 inch) (Fig. 3).
6. Secure the left baffle to the rear baffle with 1 bolt (3/8 x 1 inch) and 1 nut (3/8 inch) (Fig. 3).

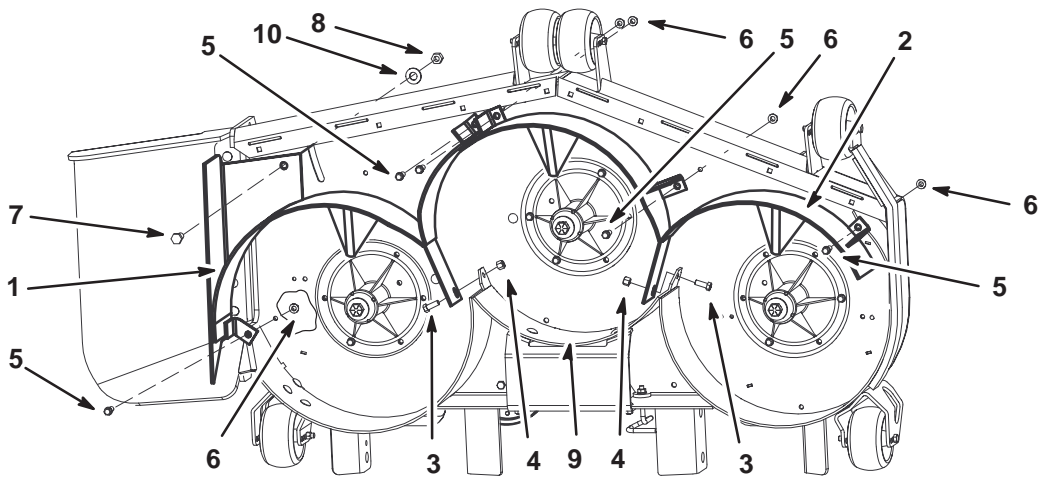


Figure 3

- |                       |                               |                       |                      |
|-----------------------|-------------------------------|-----------------------|----------------------|
| 1. Right front baffle | 4. Lock nut                   | 7. Bolt, 1/2 x 1 inch | 9. Rear baffle       |
| 2. Left front baffle  | 5. Tapping bolt, 3/8 x 1 inch | 8. Nut, 1/2 inch      | 10. Washer, 1/2 inch |
| 3. Bolt, 3/8 x 1 inch | 6. Flange nut, 3/8 inch       |                       |                      |

m-6954

## Step

# 4

## Installing the Baffles for 60 inch Mowers

### Parts needed for this step:

Qty.	Part
1	Left baffle
2	Bolt, 3/8 x 1 inch
2	Lock Nut, 3/8 inch
5	Tapping bolt, 3/8 x 1 inch
5	Flange nut, 3/8 inch
1	Right baffle
2	Bolt, 1/2 x 1 inch
2	Nut, 1/2 inch
2	Washer, 1/2 inch

### Procedure

**Note:** All holes exist in the mower for installing the new baffles.

**Note:** Loosely install the baffles to align the baffles with all existing holes in the mower. Tighten the tapping bolts into the mower first, before tightening the flange nuts.

1. Install the right baffle into the mower.
2. Secure the right baffle to the top of the mower with 2 bolts (1/2 x 1 inch), 2 tapping bolts (3/8 x 1 inch), 2 nuts (1/2 inch), 2 washers (1/2 inch) and 2 flange nuts (3/8 inch) (Fig. 4).
3. Secure the right baffle to the rear baffle with 1 bolt (3/8 x 1 inch) and 1 nut (3/8 inch) (Fig. 4).
4. Install the left baffle into the mower.
5. Secure the left baffle to the top of the mower with 3 tapping bolts (3/8 x 1 inch) and 3 flange nuts (3/8 inch) (Fig. 4).
6. Secure the left baffle to the rear baffle with 1 bolt (3/8 x 1 inch) and 1 nut (3/8 inch) (Fig. 4).

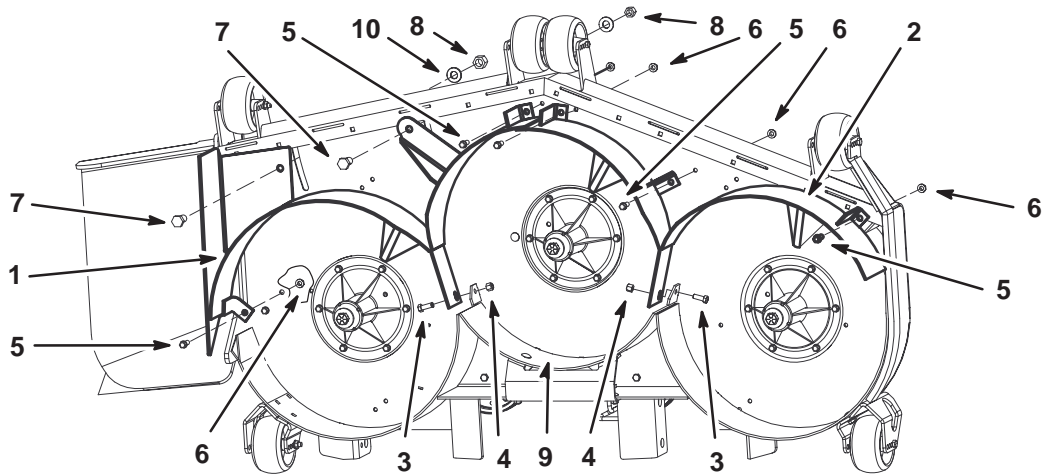


Figure 4

m-6953

- |                       |                               |                       |                      |
|-----------------------|-------------------------------|-----------------------|----------------------|
| 1. Right front baffle | 4. Lock nut                   | 7. Bolt, 1/2 x 1 inch | 9. Rear baffle       |
| 2. Left front baffle  | 5. Tapping bolt, 3/8 x 1 inch | 8. Nut, 1/2 inch      | 10. Washer, 1/2 inch |
| 3. Bolt, 3/8 x 1 inch | 6. Flange nut, 3/8 inch       |                       |                      |

# Step

# 5

## Installing the Baffles on 72 inch Mowers

### Parts needed for this step:

Qty.	Part
1	Left baffle
2	Bolt, 3/8 x 1 inch
2	Lock Nut, 3/8 inch
5	Tapping bolt, 3/8 x 1 inch
5	Flange nut, 3/8 inch
1	Right baffle
2	Bolt, 1/2 x 1 inch
2	Nut, 1/2 inch
2	Washer, 1/2 inch

### Procedure

**Note:** All holes exist in the mower for installing the new baffles.

**Note:** Loosely install the baffles to align the baffles with all existing holes in the mower. Tighten the tapping bolts into the mower first, before tightening the flange nuts.

1. Install the right baffle into the mower.
2. Secure the right baffle to the top of the mower with 2 bolts (1/2 x 1 inch), 2 tapping bolts (3/8 x 1 inch), 2 nuts (1/2 inch), 2 washers (1/2 inch), and 2 flange nuts (3/8 inch) (Fig. 5).
3. Secure the right baffle to the rear baffle with 1 bolt (3/8 x 1 inch) and 1 nut (3/8 inch) (Fig. 5).
4. Install the left baffle into the mower.
5. Secure the left baffle to the top of the mower with 3 tapping bolts (3/8 x 1 inch) (Fig. 5).
6. and 3 flange nuts (3/8 inch) (Fig. 5).
7. Secure the left baffle to the rear baffle with 1 bolt (3/8 x 1 inch) and 1 nut (3/8 inch) (Fig. 5).

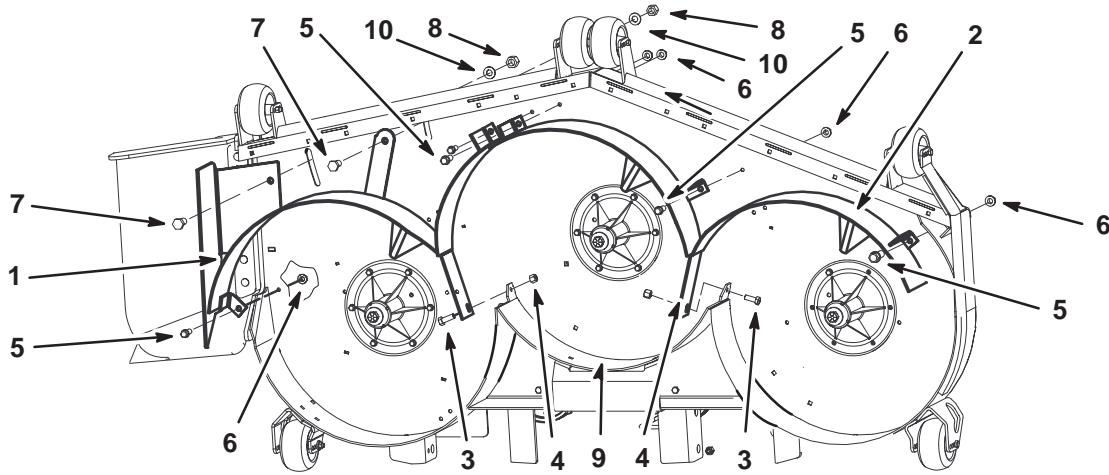


Figure 5

- |                       |                               |                       |                      |
|-----------------------|-------------------------------|-----------------------|----------------------|
| 1. Right front baffle | 4. Lock nut, 3/8 inch         | 7. Bolt, 1/2 x 1 inch | 9. Rear baffle       |
| 2. Left front baffle  | 5. Tapping bolt, 3/8 x 1 inch | 8. Nut, 1/2 inch      | 10. Washer, 1/2 inch |
| 3. Bolt, 3/8 x 1 inch | 6. Flange nut, 3/8 inch       |                       |                      |

m-6951

# Step 6

## Installing the Kickers on 72 inch Mowers

### Parts needed for this step:

Qty.	Part
2	Kickers
4	Carriage bolt, 5/16 x 1 inch
4	Lock nut, 5/16 inch

### Procedure

1. Remove the existing bolts and nuts in the holes for the kickers (Fig. 6).
2. Install the new kickers to the mower in the locations shown in Figure 6.
3. Secure the kickers with 4 carriage bolts (5/16 x 1 inch) and 4 locknuts (5/16 inch) (Fig. 6).

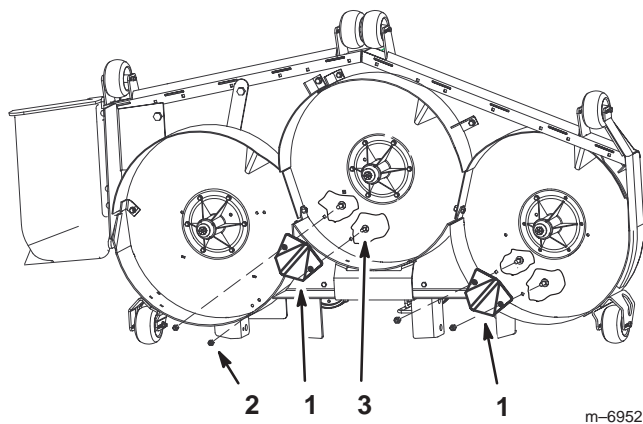


Figure 6

- |                                 |                       |
|---------------------------------|-----------------------|
| 1. Kicker                       | 3. Lock nut, 3/8 inch |
| 2. Carriage bolt, 5/16 x 1 inch |                       |

# Step 7

## Installing the New Blades

### Parts needed for this step:

Qty.	Part
3	Mulching blades

### Procedure

**Important** The sail part of the blade (i.e., the turned up section) must face the inside of the mower (Fig. 7).

1. Install the new blades to the spindles with a washer and blade bolt (Fig. 7).
2. Tighten the blade bolt to 85–110 ft-lb (115–150 N-m).

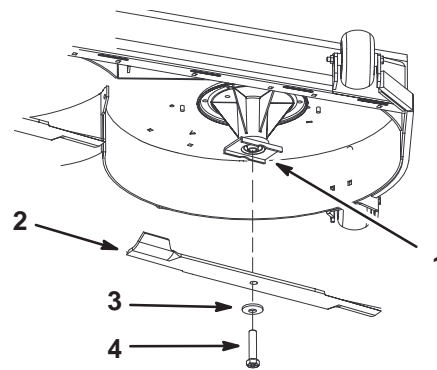


Figure 7

- |            |               |
|------------|---------------|
| 1. Spindle | 3. Washer     |
| 2. Blade   | 4. Blade bolt |

⚠



## Warning

⚠

**A blade is sharp. Contact with sharp blade can cause serious personal injury.**

- Wear gloves or wrap sharp edges of the blade with a rag.

## Side Discharge or Mulch Grass

 **Warning** 

**Without the grass deflector, discharge cover, or complete grass catcher assembly mounted in place, you and others are exposed to blade contact and thrown debris. Contact with rotating mower blade(s) and thrown debris will cause injury or death.**

- **Never remove the grass deflector from the mower because the grass deflector routes material down toward the turf. If the grass deflector is ever damaged, replace it immediately.**
- **Never put your hands or feet under the mower.**
- **Never try to clear discharge area or mower blades unless you move the power take off (PTO) to *disengage* and turn the ignition key to *off*. Also remove the key and pull the wire off the spark plug(s).**

Ensure the mower has the hinged grass deflector that disperses clippings to the side and down toward the turf, while in side discharge mode.

To mulch grass clippings, the baffles must be installed into the opening in the side of the mower.

## Mulching Tips

**Selecting the proper height-of-cut setting to suit conditions** – Remove approximately one inch or no more than 1/3 of the grass blade when cutting. In exceptionally lush and dense grass you may have to raise the height-of-cut setting another notch or convert to side discharge or bagging operations.

**Mowing in extreme conditions** – Air is required to cut and recut grass clippings in mower housing, so do not set height-of-cut too low or totally surround housing by uncut grass. Always try to have one side of the mower housing free from uncut grass, allowing air to be drawn into housing. When making an initial cut thru center of uncut area, operate machine slower and back up if mower starts to clog.

**Mow at proper intervals** – Under most normal conditions you'll need to mow every 4–5 days. However, grass grows at different rates at different times. Thus, in order to maintain the same height-of-cut, which is a good practice, you'll need to cut more frequently in early spring; as the grass growth rate slows in mid summer, cut only every 8–10 days. If you are unable to mow for an extended period due to weather conditions or other reasons, convert to side

discharge or bagging options or mow first with the height-of-cut at a high level; then mow again 2–3 days later with a lower height setting.

**Always mow with sharp blades** – A sharp blade cuts cleanly and without tearing or shredding the grass blade like a dull blade. Tearing and shredding causes the grass to turn brown at the edges which impairs growth and increases susceptibility to disease.

**After operating** – To ensure optimum performance, clean underside of mower housing after each use. If residue is allowed to build up in mower housing cutting performance will decrease.